



Infectious keratoconjunctivitis and occurrence of *Mycoplasma conjunctivae* and Chlamydiaceae in small domestic ruminants from Central Karakoram, Pakistan

Xavier Fernández-Aguilar, Luca Rossi, Óscar Cabezón, Andrea Giorgino, Isis Victoriano Llopis, Joachim Frey, Jorge Ramón López-Olvera

Infectious keratoconjunctivitis (IKC) is a contagious eye disease primarily caused by *Mycoplasma conjunctivae* in domestic and wild Caprinae. *Chlamydomphila* species have also been detected in ruminants with IKC. The objectives of this study are to investigate the ocular infection of *M. conjunctivae* and Chlamydiaceae and assess its interaction in relation to IKC in sheep and goats from remote communities around the Central Karakoram National Park in Pakistan, performing a combination of cross-sectional and case-control study design. Mostly asymptomatic and endemic infections of *M. conjunctivae* and Chlamydiaceae were found in sheep (19.3 per cent and 4.5 per cent, respectively) and goats (9.5 per cent and 1.9 per cent, respectively) from all communities, assessed by qPCR. Prevalence significantly differed between species only for *M. conjunctivae* ($P=0.0184$), which was also more prevalent in younger sheep ($P<0.01$). *Chlamydomphila pecorum* was identified by sequencing and was related with IKC only when coinfection with *M. conjunctivae* occurred, which suggest a synergic interaction. Cluster analysis of *M. conjunctivae* strains revealed higher diversity of strains than expected, evidenced interspecific transmission and suggested a higher local livestock trade than previously assumed. These results highlight the widespread occurrence of *M. conjunctivae* in sheep worldwide and its implications for wildlife should be assessed from a conservation perspective.

Infectious keratoconjunctivitis (IKC) is a common contagious ocular disease among ruminants.¹ In small domestic ruminants, IKC is usually bilateral and produces ocular discharge, epiphora, mild conjunctivitis and/or corneal opacity, causing transitory blindness in most of the cases. However, IKC outbreaks may course with more severe clinical signs, including affection of

the cornea leading to ulceration and perforation of the eye if no treatment is applied.²

Mycoplasma conjunctivae has been associated with most of the IKC outbreaks reported in small domestic ruminants and wild Caprinae worldwide and is considered the primary pathogen of this condition.^{1,3-5} However, *M. conjunctivae* is also commonly detected in the eyes of asymptomatic sheep and is eventually endemic in sheep flocks throughout Europe.⁶⁻⁸ *M. conjunctivae* infection is therefore not consistent with IKC in sheep, indicating that other factors may determine the development of clinical signs in non-epizootic conditions.⁸ Other infectious agents such as *Moraxella (Branhamella) ovis*, *Chlamydomphila* species and *Listeria monocytogenes* have been isolated from the eyes of clinically affected sheep and may act opportunistically as secondary invaders and contribute to the onset of IKC.^{7,9} However, *Chlamydomphila* ocular infections have been occasionally associated with ocular disease in small domestic ruminants¹⁰⁻¹³ and wild ruminants,^{14,15} and therefore their potential role as primary pathogens for IKC has been discussed.^{12,13} Although chlamydial infections are frequent in the eyes of diseased and asymptomatic sheep and goats,^{16,17} ocular coinfections with *M. conjunctivae* have not always been addressed in IKC control-case studies to properly assess a causal relationship. Neither did the finding of both infectious agents in clinical cases described in some studies provide conclusive aetiological information.¹⁸⁻²⁰

In mountain ecosystems, sheep and goats share alpine pastures with other IKC-susceptible wild species such as chamois (*Rupicapra* species), Alpine ibex (*Capra ibex*) or Himalayan tahr

Veterinary Record (2017)

doi: 10.1136/vr.103948

Xavier Fernández-Aguilar,
Óscar Cabezón,
Jorge Ramón López-Olvera,
Servei d'Ecopatologia de Fauna
Salvatge, Departament de Medicina i
Cirurgia Animals, Universitat Autònoma
de Barcelona, Bellaterra, Spain
Xavier Fernández-Aguilar,
Óscar Cabezón,
Centre de Recerca en Sanitat Animal
(CRESA), Institut de Recerca i
Tecnologia Agroalimentàries (IRTA),
Campus de la Universitat Autònoma de
Barcelona, Bellaterra, Barcelona, Spain
Luca Rossi,
Andrea Giorgino,
Isis Victoriano Llopis,
Dipartimento di Scienze Veterinarie,
University of Torino, Grugliasco, Italy

Joachim Frey,
Vetsuisse Faculty, Institute of Veterinary
Bacteriology, University of Bern, Bern,
Switzerland
E-mail for correspondence: Servei
d'Ecopatologia de Fauna Salvatge
(SEFaS), Facultat de Veterinària (edifici
V), Universitat Autònoma de Barcelona,
Bellaterra, E 08193, Barcelona, Spain;
Jordi.Lopez.Olvera@uab.cat

Provenance and peer review Not
commissioned; externally peer
reviewed.

Received June 3, 2016
Revised June 20, 2017
Accepted June 22, 2017

(*Hemitragus jemlahicus*).^{1,21} IKC outbreaks in wild free-ranging ruminants can cause significant mortality and demographic impact on affected herds.^{20,22} Although host specificity of certain *M. conjunctivae* strains or genotypes has been suggested,²³ interspecific transmission from domestic to wild ruminants can occur,²⁴ and domestic sheep may play a key role as an *M. conjunctivae* reservoir host for wild ruminants.^{1,68} Therefore, asymptomatic or mildly symptomatic small domestic ruminants can be at the origin of IKC outbreaks in wild ruminants, particularly if the latter have not previously been in contact with *M. conjunctivae*.

Furthermore, IKC outbreaks in livestock can cause occasional economic losses for farmers, as well as a detrimental impact on animal welfare.²⁵ In developing countries, livestock production is an important economic income in rural areas. In Pakistan, there are 29.1 million sheep and 66.6 million goats. In 2013–2014, livestock production represented 55.9 per cent of the agriculture and 11.8 per cent of the Gross Domestic Product.²⁶

The objectives of this study are to investigate the presence of *M. conjunctivae* and Chlamydiaceae in the eyes of sheep and goats from two isolated valleys in the buffer zone of the Central Karakoram National Park (CKNP) in Pakistan and to evaluate its health significance in relation to IKC. Factors affecting prevalence are explored and cluster analysis of the *M. conjunctivae* strains are also performed to establish epidemiological associations and evaluate strain diversity in this remote area.

Materials and methods

Study design and sample collection

This study was based on a combination of cross-sectional sampling strategy to estimate the apparent prevalences of *M. conjunctivae* and Chlamydiaceae and a case–control design to evaluate their influence on the clinical condition of IKC. From March 2013 to April 2014, eye swabs were collected from 334 small domestic ruminants (176 sheep and 158 goats) belonging to six communities at the boundaries of the CKNP (Fig 1). The minimum sample size required for pathogen prevalence estimation was 196, calculated with the WinEpiScope V.2.0 software²⁷ with an expected prevalence of 15 per cent (95 per cent CI, 5 per cent accepted error), in unknown total population,⁸ and was achieved depending on the availability for sampling. In particular, a team of veterinarians (including three of the authors) and livestock assistants either operated at a congregation point where local sheep and goat owners had been invited via Muezzin's announcement or freely moved across a village looking for owners' consent to sampling. All individuals in available flocks

were sampled.

CKNP is the largest protected area of Pakistan and one of the largest worldwide, covering over 10,000 km² in the Gilgit-Baltistan district (Fig 1). The sampled communities are located in two of the main valleys in the area, namely the Hunza Nagar Valley in the northwest (36°15' 4.25" N, 74°32' 9.89" E) and the Hushe Valley in the southeast (35°27' 51.64" N, 76°21' 4.23" E), at elevations ranging between 1900 m and 3500 m (Fig 1). Local climate is dry (rainfall < 200 mm/year), with a relatively greater precipitation in winter and spring, arid continental climate in summer and sudden onsets of cold weather in early autumn. Winter snowfalls are not abundant but temperatures frequently reach –15°C.

Based on data provided by official veterinarians at the local Gilgit-Baltistan Livestock Department, there was a census of 7173 sheep and 6167 goats in the sampled communities at the beginning of the last decade. Typically, sheep and goats are kept in small (10–30 heads) mixed household flocks, which are seasonally merged into larger summer flocks of few hundred individuals. In the investigated area, small domestic ruminants share habitat with approximately 6000 cattle (cows, yaks and hybrids) and a limited number of horses and donkeys. Two wild Caprinae species are also found, the relatively common Asian ibex (*Capra sibirica*), and the rare and localised Flare-horned Markhor (*Capra falconeri*). Seasonal contacts between wild and domestic Caprinae occur mainly in summer, as shown to authors by members of the sampled communities. Sheep and goats in this study were sampled while kept in the surroundings of the investigated communities, before or just after the traditional summer transhumance to the high pastures.

Swabs were collected under the third eyelid from both eyes, transported refrigerated and stored frozen at –20°C until analysed. Ocular clinical signs were recorded at sampling considering the clinical condition of IKC whenever signs of ocular damage, inflammation or discharge occurred. Species, age, sex and body condition score (BCS) were also recorded.²⁸ Age was determined in 141 of the 158 goats and in 166 of the 176 sheep by definitive incisor teeth eruption.²⁹ All applicable institutional and/or national guidelines for the care and use of animals were followed.

Mycoplasma conjunctivae detection and LPPS sequencing

At the laboratory, eye swabs were placed into sterile tubes with 0.5 ml of lysis buffer (100 mM Tris–HCl, pH 8.5, 0.05 Tween 20, 0.24 mg/ml proteinase K). After mixing with a vortex, cells were lysed for 60 minutes at 60°C and then heated to 97°C for 15 minutes in order to inactivate proteinase K.

The lysates obtained were tested for the presence of *M. conjunctivae* DNA with a TaqMan qPCR, using the primers LPPS-TM-L, LPPS-TM-R and the probe LPPS-TM-FT as described.³⁰ For cluster analysis, a subtyping of the *M. conjunctivae* strains based on the *lppS* gene was attempted with a selection of 26 samples which showed the lowest Ct values at the TaqMan qPCR. DNA was amplified by nested PCR according to the method described²⁴ with minor modifications of the primers (online supplementary table s1). All PCR products were purified with the High Pure PCR Product Purification Kit (Roche Diagnostics, Rotkreuz, Switzerland) for subsequent DNA sequence analysis. DNA sequence determination was performed using the BigDye termination cycle sequencing kit (Applied Biosystems, Foster City, California, USA) with the sequencing primers Ser_start2, Ser_start0 and Ser_end0 (online supplementary table s1). The sequences obtained were trimmed to contain the variable part of gene *lppS* and flanking regions corresponding to the nucleotides 3935–5035 of *lppS* of the type strain HRC/581 of *M. conjunctivae* (accession number AJ318939). Cluster relationships between strains were assessed by generation of phylogenetic trees, based on the sequence of using the MEGA 6 software with the following parameters: gap

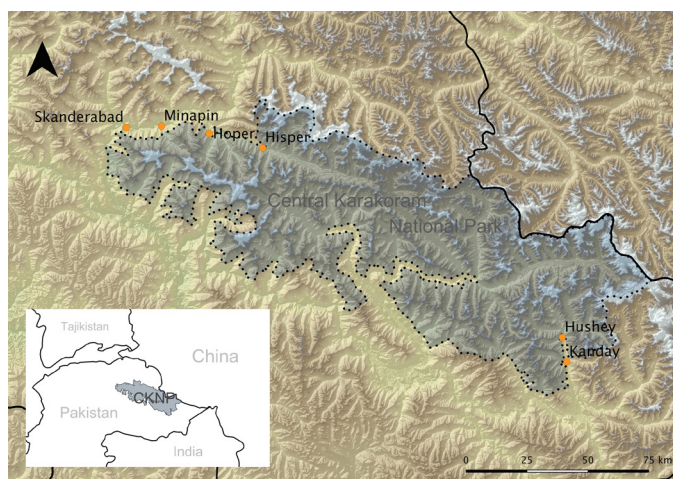


FIG 1: Map showing the location of the Central Karakoram National Park (CKNP), in Pakistan, and the six communities where the study was performed, located in two main valleys, Hunza Nagar Valley in the northwest and the Hushe Valley in the southeast.

opening penalty 15; gap extension penalty 6.6, DNA weight matrix IUB, transition weight 0.5 including the corresponding DNA sequence data from *lppS* of HRC/581 for comparison.

Chlamydiaeae detection and identification

For the detection of Chlamydiaeae species in the eye swabs lysates, an SYBR green-based qPCR assay was performed using the primers Chuni-1F and Chuni-2R.³¹ Each reaction consisted of 2.5 µl of DNA sample, 12.5 µl of SYBRGreen PCR Master Mix 2x (Applied Biosystems, Warrington, UK), 400nM of each forward and reverse primer and nuclease-free water to a total volume of 25 µl. PCR was performed following reported cycling conditions.³¹ Samples were assayed per duplicate and were assayed with an exogenous Internal Positive Control (IPC; Applied Biosystems, USA) to detect eventual PCR inhibitors.

The positive samples were analysed further with a PCR that targets the *Chlamydiales* specific 298 bp signature of the 16S rRNA gene using the primers 16S1GR and 16S1GF.³² Each reaction consisted of 2.5 µl of test sample, 25 µl of AmpliTaq Gold 360 Master Mix (Applied Biosystems, UK), 400nM of each primer and nuclease-free water up to 50 µl. Amplifications were performed starting with an initial denaturation at 95°C for 10 minutes, 40 cycles that consisted in denaturation at 95°C for 30 seconds, annealing at 51°C for 30 seconds and extension at 72°C for 30 seconds, followed with a final extension step at 72°C for 7 minutes. All PCR reactions were run on an ABI 7500 instrument (Applied Biosystems, USA). Purified amplicons (Minelute Gel Extraction Kit, Qiagen, Hilden, Germany) were sequenced for its identification with Big Dye Terminator V3.1 Kit and the ABI 3130xl Genetic Analyzer (Applied Biosystems, UK). The sequences obtained were introduced in the BLAST server from the National Centre for Biotechnology website (<http://www.ncbi.nlm.nih.gov/blast/>) to compare with the sequences available in GenBank.

Statistical analyses

A tree modelling approach was performed in order to identify factors that drive the *M. conjunctivae* and Chlamydiaeae infection. Conditional inference trees estimate relationship by binary recursive partitioning in which associations between variables are defined by P values. It is a robust statistical tool capable of dealing with variables of different nature and are suitable for complex epidemiological data.^{33,34} *M. conjunctivae* and Chlamydiaeae infection were considered as response variables (Bernoulli distribution) in two independent classification trees, whereas host (sex, age and BCS) and population variables (community and valley) were included as explanatory variables in each tree. The analyses were performed separately for sheep and goats. A conditional inference tree approach was also used

to identify risk factors for IKC, including the occurrence of *M. conjunctivae* and Chlamydiaeae infection (ie, discrete nominal variables with two categories positive/negative) and individual host factors (sex, age and BCS) as explanatory variables. These analyses were also performed separately for each ruminant species. Differences of Ct values of the *M. conjunctivae* qPCR between asymptomatic and clinical sheep and goats were assessed by Wilcoxon signed-rank test. Prevalences of *M. conjunctivae* and Chlamydiaeae were compared between species and communities using tests of proportions and setting statistical significance at 0.05. Statistical analyses were performed with R software,³⁵ using the 'party' package for the trees and the 'EpiR' package to calculate the prevalence estimates.³⁶

Results

M. conjunctivae had a 14.7 per cent prevalence (CI₉₅ 11.3 to 18.9, 49/334) in the sampled domestic ruminants. Prevalence was significantly (P=0.01842) higher in sheep (19.3 per cent, CI₉₅ 14.2 to 25.8, 34/176) than in goats (9.5 per cent, CI₉₅ 5.8 to 15.1, 15/158), both overall and for each sampling site (Tables 1 and 2). Chlamydiaeae prevalence was lower than *M. conjunctivae*, both overall (3.3 per cent, CI₉₅ 1.8 to 5.8, 11/334) and for each species separately (sheep 4.5 per cent, CI₉₅ 2.3 to 8.7, 8/176 and goats 1.9 per cent, CI₉₅ 0.6 to 5.4, 3/158). Conversely to *M. conjunctivae*, the prevalence of Chlamydiaeae did not significantly differ between species. *M. conjunctivae* was detected in all investigated communities in sheep, and in four of them in goats, whereas Chlamydiaeae were detected in five communities in sheep and in three communities in goats (Tables 1 and 2).

Among the 34 *M. conjunctivae*-positive sheep, 4 (11.8 per cent) had KC with ocular discharge, whereas the remaining 30 sheep (88.2 per cent) had no clinical signs at the time of sampling (Table 1). One of the 15 *M. conjunctivae*-positive goats showed severe signs of KC (bilateral cornea perforation) associated with the ocular presence of *M. conjunctivae* (Fig 2), whereas the remaining 14 (93.3 per cent) *M. conjunctivae*-positive goats did not show any clinical signs. Median Ct values of the *M. conjunctivae* qPCR showed no statistical differences in sheep with IKC (median 30.2) and without (median 31.7), and in goats with IKC (26.3 in the only IKC case) and without (31.3). On the other hand, eight sheep (4.5 per cent, 8/176) and one goat (0.6 per cent, 1/158) with ocular clinical signs tested negative to the *M. conjunctivae* qPCR (Table 1). Also, 3 sheep of the 11 domestic small ruminants (8 sheep and 3 goats) positive to Chlamydiaeae were also positive to *M. conjunctivae*. KC clinical signs in the Chlamydiaeae-positive small ruminants were observed only when coinfection with *M. conjunctivae* occurred, in two out of these three sheep.

TABLE 1: Prevalence by species and ocular clinical signs.

	n	<i>M. conjunctivae</i>		Chlamydiaeae	
		Positive	Prevalence (CI95)	Positive	Prevalence (CI95)
Sheep					
With KC	12	4	33.3% (13.8 to 60.9)	2*	16.7% (4.7 to 44.8)
Without KC	164	30	18.3% (13.1 to 24.9)	6	3.7% (1.7 to 7.7)
Total	176	34	19.3% (14.2 to 25.8)	8	4.5% (2.3 to 8.7)
Goats					
With KC	2	1	50.0% (2.6 to 97.4)	0	0% (0 to 65.8)
Without KC	156	14	9.0% (5.4 to 14.5)	3	1.9% (0.6 to 5.5)
Total	158	15	9.5% (5.8 to 15.1)	3	1.9% (0.6 to 5.4)
Total	334	49	14.7% (11.3 to 18.9)	11	3.3% (1.8 to 5.8)

Summary of samples analysed (n), positives to qPCR (Positive) and prevalence (%) of *M. conjunctivae* and Chlamydiaeae in eye swabs of small domestic ruminants from the Central Karakoram National Park area, showed by ruminant species and by ocular clinical signs (KC)

*These two sheep were also positive to *M. conjunctivae*
KC, keratoconjunctivitis

TABLE 2: Prevalence by species and communities.

Community	Goats				Sheep			
	S	KC	<i>M. conjunctivae</i>	Chlamydiaceae	S	KC	<i>M. conjunctivae</i>	Chlamydiaceae
Hisper	23	0	0.0% (0)*	0.0% (0)	9	0	11.1% (1)*	0.0% (0)
Hoper	22	1	22.7% (5)*	4.6% (1)	10	2	30.0% (3)*	10.0% (1)
Hushe	36	0	5.6% (2)*	2.8% (1)	43	5	18.6% (8)*	4.6% (2)
Kanday	61	1	11.5% (7)*	0.0% (0)	73	5	17.8% (13)*	4.1% (3)
Minapin	2	0	0.0% (0)*	0.0% (0)	15	0	26.7% (4)*	6.7% (1)
Skanderabad	14	0	7.1% (1)*	7.1% (1)	26	0	19.2% (5)*	3.9% (1)
Total	158	2	9.5% (15)*	1.9% (3)	176	12	19.3% (34)*	4.5% (8)

Summary of samples (S), clinical signs (KC) and prevalence (percentage and number of positives) of *M. conjunctivae* and Chlamydiaceae bacteria in the eyes of small domestic ruminants from the Central Karakoram National Park area in Pakistan

* Mean *M. conjunctivae* prevalence was significantly ($P=0.01842$) higher in sheep than in goats both overall and for each sampling community
KC, keratoconjunctivitis

Decision tree analyses indicated that *M. conjunctivae* prevalence was significantly ($P<0.01$) higher in sheep younger than one year than in older sheep (Table 3). Differences by age category were not observed in goats and no other factors considered in the tree analysis were identified to influence significantly on *M. conjunctivae* prevalence. No age-related differences were observed in both hosts for Chlamydiaceae. On the other hand, no risk factors for IKC were identified among the explanatory variables considered in the tree, including *M. conjunctivae* and Chlamydiaceae occurrence in the eyes of sheep and goats.

Eleven PCR-amplified fragments of the *lppS* gene of *M. conjunctivae* were sequenced from seven goats and from four sheep taken from four different communities. Sequence analyses allowed to differentiate seven *M. conjunctivae* strains that were all phylogenetically related to *M. conjunctivae* strains from sheep (2820s) and Alpine chamois (*Rupicapra rupicapra*) (2778c, 2784c) that were isolated in the Alps and related to IKC outbreaks in chamois and sheep²⁴ (Fig 3). Among the strains sequenced, only one (P117) was associated with clinical KC in a sheep. In four goats (P119, P124, P122, P136) from Hoper community, a common strain was identified. Furthermore, a common strain was

found in a sheep (P98) and a goat (P16) from Minapin and Kanday communities, respectively (Fig 3). The EMBL/GenBank accession numbers for the *lppS* gene fragments of the different strains are also shown in Fig 3.

Sequences of the Chlamydiaceae 16S rRNA were obtained from five Chlamydiaceae-positive samples (four sheep and one goat from two different communities) and all had the highest similarity (96–100) with *Chlamydomphila pecorum* 16S ribosomal RNA complete sequence (accession number NR_121750.1).

Discussion

M. conjunctivae and Chlamydiaceae were detected in asymptomatic and clinically affected eyes of sheep and goats from the CKNP, Gilgit-Baltistan district of Pakistan. These results agree with the previously reported sporadic IKC cases in sheep flocks with endemic *M. conjunctivae* infections and its capability to establish asymptomatic ocular infections.^{8,37} Reports of non-epidemic IKC in goats are scarce³⁸ and most of the IKC descriptions refer to outbreaks.^{39,40} However, the results obtained in this study suggest that *M. conjunctivae* is endemic in mixed sheep-goat flocks of the CKNP area. Although *M. conjunctivae*



FIG 2: Image of a goat exhibiting a severe stage of infectious keratoconjunctivitis, with bilateral panophthalmitis, lacrymation, hypopyon and perforation of the cornea. *Mycoplasma conjunctivae* was confirmed in eye swabs by qPCR.

TABLE 3 Age-related differences in prevalence.

	Age category	
	0-1 years	>1 year
<i>M. conjunctivae</i>		
Goats	16.3% (8/49)	3.3% (3/92)
Sheep	30.0% (24/80)*	10.5% (9/86)*
Total	24.8% (32/129)	6.7% (12/178)
Chlamydiaceae		
Goats	2.0% (1/49)	2.2% (2/92)
Sheep	5.0% (4/80)	4.7% (4/86)
Total	3.9% (5/129)	3.4% (6/178)

Results of *M. conjunctivae* and Chlamydiaceae qPCR (prevalence %; positive/tested) showed by age in 141 goats and 166 sheep in which age was determined

*Statistically significant differences ($P < 0.01$)

has been previously reported in sheep from Pakistan⁴¹ and several other locations worldwide,^{18 42-44} its detection had not been reported in traditionally reared flocks from such remote and isolated communities. This finding confirms that *M. conjunctivae* is probably one of the most common and geographically widespread pathogens found in sheep.

M. conjunctivae has been traditionally studied as the main aetiological agent in IKC outbreaks characterised by high mor-

bidity affecting all age classes and severe clinical signs.^{25 41 44} Asymptomatic carriers may have lower *M. conjunctivae* loads,⁴⁵ which altogether with the fastidious nature of *M. conjunctivae* may have complicated its identification, resulting eventually in the underestimation of its frequency by traditional methods of isolation.^{7 40} Similar prevalence to those found in sheep and goats from the CKNP area has been reported in sheep from northern Spain (25.7-29.2 per cent) when assessed by qPCR, with also a similar percentage of asymptomatic *M. conjunctivae*-positive sheep (87.3 per cent).^{5 20} Since *M. conjunctivae*-infected sheep from Pakistan were mostly asymptomatic, no statistically significant relationship could be established between *M. conjunctivae* infection and IKC. In these endemic and mostly subclinical infections, the development of clinical signs may depend on other factors, such as host immunity, strain virulence or concurrent infections.^{7 8} Ocular clinical signs were however not related with the Ct values of the *M. conjunctivae* qPCR and several asymptomatic infections exhibited low Ct values (ie, inverse to mycoplasmal loads), which suggests that a different host-mycoplasma interaction than the previously described in wild Caprinae occurred in sheep and goats.^{5 45 46}

The higher prevalence of *M. conjunctivae* in sheep younger than one year compared with the older ones indicates that acquired immunity may influence the course of the infection in sheep. IKC typically causes more severe clinical signs in adult sheep

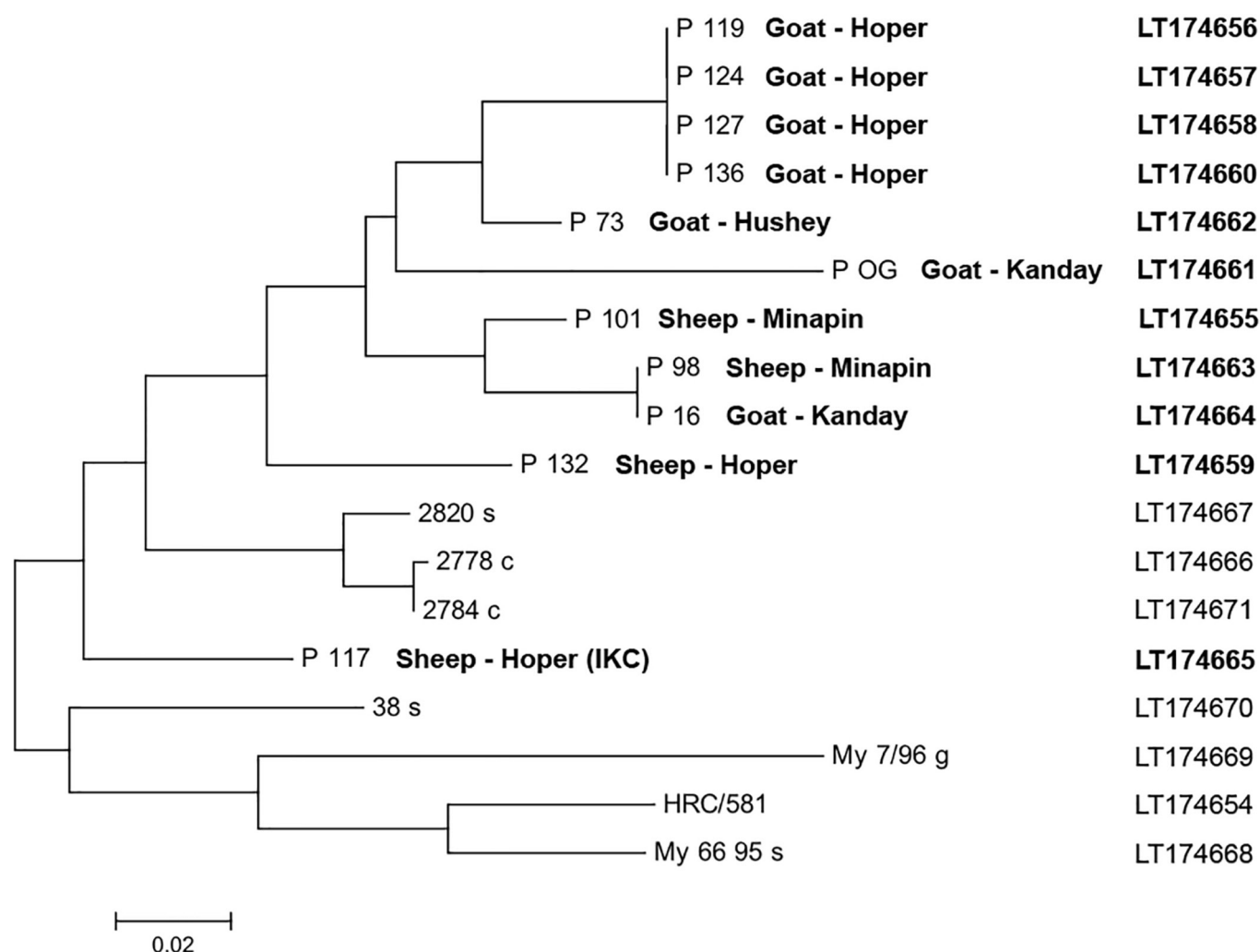


FIG 3: Phylogenetic representation of the *M. conjunctivae* strains sequenced from sheep and goats from the Central Karakoram National Park area (number starting with P) in comparison with the type strain of *M. conjunctivae* (HRC/581) and strains from sheep in the Eastern Swiss Alps (38s and 2820s), from chamois in the Austrian Alps (2778c and 2784c), from sheep in Croatia imported from Australia (My6695) and from a goat imported to Croatia from the Southern French Alps (My7/96). The species and the community are specified next to the strain reference. Infectious keratoconjunctivitis (IKC) indicates the presence of ocular clinical signs at sampling. The EMBL/GenBank accession numbers for the *lppS* gene fragments of the different strains identified in the study are indicated in bold, whereas the accession numbers for the reference strains are indicated in plain text.

than lambs.^{2,37} However, *M. conjunctivae* persistence in the eyes do not necessarily have to be related with clinical signs as broadly described in experimental infections.^{6,47} Higher prevalence of *M. conjunctivae* in young animals has been also described in ibex,^{5,45} which suggests that younger animals/lambs may be more important for the *M. conjunctivae* maintenance in the herd/population. Endemic and mostly asymptomatic *M. conjunctivae* infections had no apparent effect on BCS, which is probably influenced by other factors not assessed in this study. The small sample size and number of clinical cases might also have impaired the identification of risk factors associated with the disease.

The higher prevalence of *M. conjunctivae* in sheep compared with goats corresponds to previous reports from other geographic areas.⁸ This higher prevalence of *M. conjunctivae* in sheep may be related to host specificity of the prevalent local strains, or to a higher density, aggregation and intraspecific contact among sheep than among goats within mixed flocks. Overall, the results of this study and previous descriptions suggest that sheep are better hosts than goats for the endemic and mostly asymptomatic maintenance of *M. conjunctivae*. However, high pathogenic strains of *M. conjunctivae* were isolated during IKC outbreaks in both ruminant species,^{25,39} and goats can also develop severe IKC in endemic infections as observed in this study (Fig 2).

Prevalence of Chlamydiaceae was lower than reported in previous studies in small domestic ruminants.^{16,17} The differences could be in part because different sampling and diagnostic methodology were used. Several *Chlamydomphila* species, such as *Chlamydomphila abortus*, *C. pecorum*, *Chlamydomphila psittaci* and *Chlamydia suis* have been identified in the eyes of livestock without correlation with ocular clinical signs.^{12,16,17} On the other hand, *C. pecorum* has been occasionally associated with KC and polyarthritis in sheep and goats⁴⁸ and IKC was successfully induced experimentally with *C. psittaci* infection (as taxonomically considered at that time).¹¹ Chlamydial KC outbreaks have also been reported both in domestic and wild ruminants.^{10,14} Since Chlamydiaceae and particularly *C. pecorum* infection in sheep and goats from CKNP area were exclusively associated with clinical signs of IKC in case of coinfection with *M. conjunctivae*, it is possible that they acted synergically with *M. conjunctivae* as a secondary infectious agent for the development of clinical disease. However, the few number of coinfection cases found in this study does not allow inferring conclusions on virulence synergism with a statistical approach. The relative aetiological importance of Chlamydiaceae may also rely on other factors, such as the strain pathogenicity.⁴⁸ Similar concurrent infections of *M. conjunctivae* and Chlamydiaceae have been reported in domestic sheep^{12,18} and free-ranging chamois^{19,20} in both diseased and asymptomatic individuals. According to these results, the interaction of *Chlamydomphila* species with *M. conjunctivae* should be considered in aetiological investigations of ocular disease in small domestic ruminants, although experimental evidence would probably be necessary to assess whether such coinfections determine the onset of IKC.

The diversity of the *M. conjunctivae* strains identified in the CKNP area suggests that *M. conjunctivae* has been present for a long time in northern Pakistan. However, the relatively close relationship of the *M. conjunctivae* strains found in this study with strains described in sheep and wild Caprinae from the Alps (Central Europe) suggests that *M. conjunctivae* might have been introduced in this area along with its hosts, as it was described in Croatia in the early 1990s.²⁴ Furthermore, the molecular identification of the same strain infecting sheep and goats confirms interspecific transmission and the need to approach the epidemiological study of IKC considering all the susceptible hosts, taking into account the differences in host–pathogen interaction.⁸ Cluster analyses also revealed that the same *M. conjunctivae* strain was present in the communities of Kanday and Minapin, separated by 190-km straight-line distance and mountains ranging 5500–8000 m of alti-

tude (Fig 1). Livestock trade in northern Pakistan is mainly on a local scale, and it can be assumed that trade movements between Kanday and Minapin are limited due to the great physical and cultural distance and the deriving lack of relationships. However, the molecular analyses of *M. conjunctivae* in sheep and goats mirror more complex trade habits and suggest a long endemic presence of *M. conjunctivae* in the small domestic ruminants of the CKNP area.

The introduction of *M. conjunctivae* asymptomatic carriers into naive populations supposes a risk of severe IKC outbreaks in sheep flocks.^{25,44} Similarly, interspecific transmission of *M. conjunctivae* from domestic to wild mountain ruminants may result into massive IKC outbreaks in wildlife as demonstrated in Alpine chamois.²⁴ Therefore, domestic sheep and goat populations of the CKNP area, asymptotically infected with *M. conjunctivae*, may represent a potential source of infection and IKC outbreaks in sympatric wild hosts, namely the Asian ibex and the Flare-horned Markhor. To the authors' knowledge, there is currently no robust information about IKC in wild ruminants from the CKNP. Syndromic surveillance of IKC in local flocks however would improve rapid detection of any major risk of spill over of virulent *M. conjunctivae* strains at the livestock–wildlife interface.

In conclusion, mostly asymptomatic and endemic infections of *M. conjunctivae* and Chlamydiaceae were found in sheep and goats populations of the CKNP area in the Gilgit-Baltistan district of Pakistan. Chlamydiaceae was associated with ocular clinical signs only when coinfection with *M. conjunctivae* occurred, but further studies are needed to better assess the effect of such coinfections in eye disease. Cluster analysis of *M. conjunctivae* strains revealed higher diversity of strains than expected, evidenced interspecific transmission and suggested a higher local livestock trade than previously assumed. *M. conjunctivae* is probably one of the most common pathogens found in sheep worldwide and its implications should be assessed from a conservation perspective if sheep are allowed to share pastures with endangered or vulnerable ruminant species.

Acknowledgements

Sampling would have not been possible without the enthusiastic compliance of local villagers and the precious collaboration of the staff members from the Central Karakoram National Park. Valuable support was also provided by official veterinarians and livestock assistants of the Livestock & Dairy Development Department, Gilgit Baltistan. The authors also acknowledge the invaluable technical assistance of Amandine Ruffieux, Institute of Veterinary Bacteriology, University of Bern.

Open Access

This is an Open Access article distributed in accordance with the Creative Commons Attribution Non Commercial (CC BY-NC 4.0) license, which permits others to distribute, remix, adapt, build upon this work non-commercially, and license their derivative works on different terms, provided the original work is properly cited and the use is non-commercial. See: <http://creativecommons.org/licenses/by-nc/4.0/>

► Additional material is published online only. To view please visit the journal online (<http://dx.doi.org/10.1136/vr.103948>).

References

- GIACOMETTI M, JANOVSKY M, BELLOY L, *et al.* Infectious keratoconjunctivitis of ibex, chamois and other Caprinae. *Rev Sci Tech* 2002;21:335–45.
- HOSIE BD. Infectious Keratoconjunctivitis. AITKEN ID, ed. *Diseases of Sheep*: Blackwell Publishing, 2007:342–5.
- TROTTER SL, FRANKLIN RM, BAAS EJ, *et al.* Epidemic caprine keratoconjunctivitis: experimentally induced disease with a pure culture of *Mycoplasma conjunctivae*. *Infect Immun* 1977;18:816–22.
- TER LAAK EA, SCHREUDER BE, KIMMAN TG, *et al.* Ovine keratoconjunctivitis experimentally induced by instillation of *Mycoplasma conjunctivae*. *Vet Q* 1988;10:217–24.

- 5 FERNÁNDEZ-AGUILAR X, CABEZÓN O, GRANADOS JE, *et al.* Postepizootic persistence of asymptomatic *Mycoplasma conjunctivae* infection in Iberian ibex. *Applied and Environmental Microbiology* 2017;83:e00690-17.
- 6 JANOVSKY M, FREY J, NICOLET J, *et al.* *Mycoplasma conjunctivae* infection is self-maintained in the swiss domestic sheep population. *Vet Microbiol* 2001;83:11-22.
- 7 AKERSTEDT J, HOFSHAGEN M. Bacteriological investigation of infectious keratoconjunctivitis in Norwegian sheep. *Acta Vet Scand* 2004;45:19-26.
- 8 FERNÁNDEZ-AGUILAR X, CABEZÓN O, MARCO I, *et al.* *Mycoplasma conjunctivae* in domestic small ruminants from high mountain habitats in Northern Spain. *BMC Vet Res* 2013;9:253.
- 9 DAGNALL GJ. The role of *Branhamella ovis*, *Mycoplasma conjunctivae* and *Chlamydia psittaci* in conjunctivitis of sheep. *Br Vet J* 1994;150:65-71.
- 10 ANDREWS AH, GODDARD PC, WILSMORE AJ, *et al.* A chlamydial keratoconjunctivitis in a British sheep flock. *Vet Rec* 1987;120:238-9.
- 11 WILSMORE AJ, DAGNALL GJ, WOODLAND RM. Experimental conjunctival infection of lambs with a strain of *Chlamydia psittaci* isolated from the eyes of a sheep naturally affected with keratoconjunctivitis. *Vet Rec* 1990;127:229-31.
- 12 GUPTA S, CHAHOTA R, BHARDWAJ B, *et al.* Identification of chlamydiae-Chlamydiae and *Mycoplasma* species in ruminants with ocular infections. *Lett Appl Microbiol* 2015;60:135-9.
- 13 WALKER E, LEE EJ, TIMMS P, *et al.* Chlamydia pecorum infections in sheep and cattle: a common and under-recognised infectious disease with significant impact on animal health. *Vet J* 2015;206:252-60.
- 14 MEAGHER M, QUINN WJ, STACKHOUSE L. Chlamydial-caused infectious keratoconjunctivitis in bighorn sheep of Yellowstone National Park. *J Wildl Dis* 1992;28:171-6.
- 15 TAYLOR SK, VIEIRA VG, WILLIAMS ES, *et al.* Infectious keratoconjunctivitis in free-ranging mule deer (*Odocoileus hemionus*) from Zion National Park, Utah. *J Wildl Dis* 1996;32:326-30.
- 16 POLKINGHORNE A, BOREL N, BECKER A, *et al.* Molecular evidence for chlamydial infections in the eyes of sheep. *Vet Microbiol* 2009;135:142-6.
- 17 OSMAN KM, ALI HA, ELJAKEE JA, *et al.* Prevalence of *Chlamydia psittaci* infections in the eyes of cattle, buffaloes, sheep and goats in contact with a human population. *Transbound Emerg Dis* 2013;60:245-51.
- 18 LYSNYANSKY I, LEVISOHN S, BERNSTEIN M, *et al.* Diagnosis of *Mycoplasma conjunctivae* and *Chlamydia psittaci* spp in an episode of conjunctivitis/keratoconjunctivitis in lambs. *Israel Journal of Veterinary Medicine* 2007;12:79-82.
- 19 HOLZWARTH N, POSPISCHIL A, MAVROT F, *et al.* Occurrence of Chlamydiae, *Mycoplasma conjunctivae*, and pestiviruses in Alpine chamois (*Rupicapra r.*) of Grisons, Switzerland. *J Vet Diagn Invest* 2011;23:333-7.
- 20 ARNAL M, HERRERO J, DE LA FE C, *et al.* Dynamics of an infectious keratoconjunctivitis outbreak by *Mycoplasma conjunctivae* on Pyrenean Chamois *Rupicapra p. pyrenaica*. *PLoS One* 2013;8:e61887.
- 21 RYSER-DEGIORGIS M-P, INGOLD P, TENHU H, *et al.* Encounters between Alpine Ibex, Alpine Chamois and Domestic Sheep in the Swiss Alps. *Hystrix* 2002;13:1-11.
- 22 LOISON A, GAILLARD J-M, JULLIEN J-M. Demographic patterns after an epizootic of Keratoconjunctivitis in a Chamois Population. *J Wildl Manage* 1996;60:517-27.
- 23 ZIMMERMANN L, JAMBRESIC S, GIACOMETTI M, *et al.* Specificity of *Mycoplasma conjunctivae* strains for alpine chamois *Rupicapra r. Rupicapra*. *Wildlife Biol* 2008;14:118-24.
- 24 BELLOY L, JANOVSKY M, VILEI EM, *et al.* Molecular epidemiology of *Mycoplasma conjunctivae* in Caprinae: transmission across species in natural outbreaks. *Appl Environ Microbiol* 2003;69:1913-9.
- 25 NAGLI T, HAJSIG D, FREY J, *et al.* Epidemiological and microbiological study of an outbreak of infectious keratoconjunctivitis in sheep. *Vet Rec* 2000;147:72-5.
- 26 ANONYMOUS. Pakistan Economic Survey: Ministry of Finance, Government of Pakistan., 2014:23-41.
- 27 THRUSFIELD M, ORTEGA C, DE BLAS I, *et al.* WIN EPISCOPE 2.0: improved epidemiological software for veterinary medicine. *Vet Rec* 2001;148:567-72.
- 28 RUSSEL AJE, DONEY JM, GUNN RG. Subjective assessment of body fat in live sheep. *J Agric Sci* 1969;72:451-4.
- 29 Food and agriculture organization of the United Nations. How to age sheep, goats, cattle and buffalo. A manual for primary animal health care worker: Animal Production and Health Division., 1994. <http://www.fao.org/docrep/t0690e/t0690e05.htm#unit>.
- 30 VILEI EM, BONVIN-KLOTZ L, ZIMMERMANN L, *et al.* Validation and diagnostic efficacy of a TaqMan real-time PCR for the detection of *Mycoplasma conjunctivae* in the eyes of infected Caprinae. *J Microbiol Methods* 2007;70:384-6.
- 31 NORDENTOFT S, KABELL S, PEDERSEN K. Real-time detection and identification of *Chlamydia* species in veterinary specimens by using SYBR green-based PCR assays. *Appl Environ Microbiol* 2011;77:6323-30.
- 32 EVERETT KD, BUSH RM, ANDERSEN AA. Emended description of the order Chlamydiales, proposal of Parachlamydiaceae fam. nov. and Simkaniaceae fam. nov., each containing one monotypic genus, revised taxonomy of the family Chlamydiaceae, including a new genus and five new species, and standards for the identification of organisms. *Int J Syst Bacteriol* 1999;49:415-40.
- 33 FRIEDMAN JH, MEULMAN JJ. Multiple additive regression trees with application in epidemiology. *Stat Med* 2003;22:1865-81.
- 34 HOTHORN T, HORNIK K, ZEILEIS A. Unbiased recursive partitioning: a conditional Inference Framework. *Journal of Computational and Graphical Statistics* 2006;15:651-74.
- 35 R Development core team 3.1.3. A language and environment for statistical computing. Vienna: R Foundation for Statistical Computing, 2015. <http://www.R-project.org>.
- 36 STEVENSON M, NUNES T, HEUER C. epiR: An R Package for the Analysis of Epidemiological Data. R package version 0.9 62. 2012.
- 37 JONES GE, FOGGIE A, SUTHERLAND A, *et al.* Mycoplasmas and ovine keratoconjunctivitis. *Vet Rec* 1976;99:137-41.
- 38 SURMAN PG. Mycoplasma aetiology of keratoconjunctivitis ("pink-eye") in domestic ruminants. *Aust J Exp Biol Med Sci* 1973;51:589-607.
- 39 BAAS EJ, TROTTER SL, FRANKLIN RM, *et al.* Epidemic caprine keratoconjunctivitis: recovery of *Mycoplasma conjunctivae* and its possible role in pathogenesis. *Infect Immun* 1977;18:806-15.
- 40 TER LAAK EA, SCHREUDER BE, SMITH-BUYS CM. The occurrence of *Mycoplasma conjunctivae* in The Netherlands and its association with infectious keratoconjunctivitis in sheep and goats. *Vet Q* 1988;10:73-83.
- 41 SHAHZAD W, MUNIR R, RANA MY, *et al.* Prevalence, molecular diagnosis and treatment of *Mycoplasma conjunctivae* isolated from infectious keratoconjunctivitis affected Lohi sheep maintained at Livestock Experiment Station, Bahadurnagar, Okara, Pakistan. *Trop Anim Health Prod* 2013;45:737-42.
- 42 BARILE ME, DEL GIUDICE RA, TULLY JG. Isolation and characterization of *Mycoplasma conjunctivae* sp. n. from sheep and goats with keratoconjunctivitis. *Infect Immun* 1972;5:70-6.
- 43 VAN HALDEREN A, VAN RENSBURG WJ, GEYER A, *et al.* The identification of *Mycoplasma conjunctivae* as an aetiological agent of infectious keratoconjunctivitis of sheep in South Africa. *Onderstepoort J Vet Res* 1994;61:231-7.
- 44 MOTHA MX, FREY J, HANSEN ME, *et al.* Detection of *Mycoplasma conjunctivae* in sheep affected with conjunctivitis and infectious keratoconjunctivitis. *N Z Vet J* 2003;51:186-90.
- 45 MAVROT F, VILEI EM, MARREROS N, *et al.* Occurrence, quantification, and genotyping of *Mycoplasma conjunctivae* in wild caprinae with and without infectious keratoconjunctivitis. *J Wildl Dis* 2012;48:619-31.
- 46 RYSER-DEGIORGIS ME, BISCHOF DE, MARREROS N, *et al.* Detection of *Mycoplasma conjunctivae* in the eyes of healthy, free-ranging Alpine ibex: possible involvement of alpine ibex as carriers for the main causing agent of infectious keratoconjunctivitis in wild Caprinae. *Vet Microbiol* 2009;134:368-74.
- 47 GIACOMETTI M, NICOLET J, FREY J, *et al.* Susceptibility of alpine ibex to conjunctivitis caused by inoculation of a sheep-strain of *Mycoplasma conjunctivae*. *Vet Microbiol* 1998;61:279-88.
- 48 JELOCNIK M, WALKER E, PANNEKOEK Y, *et al.* Evaluation of the relationship between *Chlamydia pecorum* sequence types and disease using a species-specific multi-locus sequence typing scheme (MLST). *Vet Microbiol* 2014;174:214-22.



CrossMark