

Evolutionary divergence in life history traits among populations of the Lake Malawi cichlid fish *Astatotilapia calliptera*

Paul J. Parsons^{1,2} | Jon R. Bridle¹ | Lukas Rüber^{3,4}  | Martin J. Genner¹ 

¹School of Biological Sciences, University of Bristol, Bristol, UK

²University of Exeter, Penryn, UK

³Naturhistorisches Museum der Burggemeinde Bern, Bern, Switzerland

⁴Institute of Ecology and Evolution, University of Bern, Bern, Switzerland

Correspondence

Martin J. Genner, School of Biological Sciences, University of Bristol, Bristol, UK.
Email: M.Genner@bristol.ac.uk

Paul. J. Parsons, University of Exeter, Penryn, UK.

Email: P.Parsons@exeter.ac.uk

Funding information

NERC-CASE studentship, Grant/Award Number: NE/H018115/1

Abstract

During the early stages of adaptive radiation, populations diverge in life history traits such as egg size and growth rates, in addition to eco-morphological and behavioral characteristics. However, there are few studies of life history divergence within ongoing adaptive radiations. Here, we studied *Astatotilapia calliptera*, a maternal mouth-brooding cichlid fish within the Lake Malawi haplochromine radiation. This species occupies a rich diversity of habitats, including the main body of Lake Malawi, as well as peripheral rivers and shallow lakes. We used common garden experiments to test for life history divergence among populations, focussing on clutch size, duration of incubation, egg mass, offspring size, and growth rates. In a first experiment, we found significant differences among populations in average clutch size and egg mass, and larger clutches were associated with smaller eggs. In a second experiment, we found significant differences among populations in brood size, duration of incubation, juvenile length when released, and growth rates. Larger broods were associated with smaller juveniles when released and shorter incubation times. Although juvenile growth rates differed between populations, these were not strongly related to initial size on release. Overall, differences in life history characters among populations were not predicted by major habitat classifications (Lake Malawi or peripheral habitats) or population genetic divergence (microsatellite-based F_{ST}). We suggest that the observed patterns are consistent with local selective forces driving the observed patterns of trait divergence. The results provide strong evidence of evolutionary divergence and covariance of life history traits among populations within a radiating cichlid species, highlighting opportunities for further work to identify the processes driving the observed divergence.

KEYWORDS

adaptive radiation, egg size, F_{ST} - Q_{ST} , growth rate, phenotypic plasticity

1 | INTRODUCTION

Adaptive radiation is characterized by the rapid evolution of ecologically differentiated species that share recent common ancestry (Schluter, 2000). Although life history traits can diverge among derived species within radiations (Duponchelle, Paradis, Ribbink, & Turner,

2008), the role of local life history adaptation in restricting gene flow among populations remains far less well-understood than adaptation in eco-morphological and behavioral traits. This is surprising, given that many studies have demonstrated that intraspecific variation in life history strategies is driven by local environmental variation, including the quality of the food (Segers & Taborsky, 2011), habitat availability

This is an open access article under the terms of the Creative Commons Attribution License, which permits use, distribution and reproduction in any medium, provided the original work is properly cited.

© 2017 The Authors. *Ecology and Evolution* published by John Wiley & Sons Ltd.

(Rollinson & Hutchings, 2013), and key limits to reproduction including local predation regimes (Segers & Taborsky, 2012). It is, therefore, important to assess the role of life history traits, and potential constraints in their evolution, during the process of adaptive radiation.

Studies of life history evolution often focus on how spatial or temporal variation in the environment can drive selection to optimize fitness in traits such as offspring size, offspring number, and growth rates. It is generally assumed that larger offspring must be fitter, and empirical data often support this view (Bashey, 2008; Hutchings, 1991; Reznick, Bryga, & Endler, 1990; Riesch, Plath, & Schlupp, 2012; Sogard, 1997). Therefore, we should expect individual females to favor larger offspring wherever possible. However, the energy required for somatic maintenance means that only a portion of the resources of any female can be allocated for reproduction. Selection should, therefore, modify the balance of offspring size to offspring number depending on the resources available, and show spatial variation among habitats. How selection operates on such traits, however, will be determined not only by readily measurable spatial contrasts in habitat characteristics, but also by habitat predictability (Morrongiello, Bond, Crook, & Wong, 2012), and the extent of plasticity in the trait (e.g., Burgess & Marshall, 2014).

Life history traits show strong covariance, so evidence that habitat predictability and resource availability can both drive selection on life history traits (e.g., Winemiller & Rose, 1992). Winemiller (2005) suggests that these factors may slow down, or prevent, local adaptation in some habitats, but will accelerate local adaptation (and adaptive radiation) in others. Given this background, in this study we used the mouthbrooding cichlid fish *Astatotilapia calliptera* to take the first steps to investigate population level divergence, and covariance in life history traits, within the context of cichlid adaptive radiation. The species is useful for studying life history evolution, on account of the considerable maternal care exhibited (Konings, 2007; Ribbink, 1990), with females collecting eggs after fertilization and incubating them in their mouths (Ribbink, 1990).

Astatotilapia calliptera is part of the Lake Malawi haplochromine radiation (Malinsky et al., 2017) but, unlike the other members of the flock that are lacustrine specialists it is a generalist, occupying both the littoral margins of Lake Malawi and peripheral habitats including rivers and shallow lakes. The main body of Lake Malawi is comparatively stable, with relatively minor changes in water level between seasons and over decadal timescales (Scholz et al., 2011). By contrast, peripheral water bodies are prone to both flooding in the wet season and drought or even complete habitat desiccation (e.g., Nicholson, 1998; for Lake Chilwa) in the dry season (Kingdon, Bootsma, Mwita, Mwichande, & Hecky, 1999; Pauw, Thurlow, & Van Seventer, 2010). This strong seasonal variability in water availability leads to associated changes in habitat productivity, thermal regime, and oxygen availability. The species also represents a useful model when considering evolutionary processes during early-stage adaptive diversification. The species has seeded a sympatric species pair within a crater lake (Malinsky et al., 2015) and has also been proposed to have taken a role in generating the main species radiation in Lake Malawi (Malinsky et al., 2017). Importantly the species exhibits population variation in

male color and eco-morphological traits. These differences are associated with assortative mating suggestive of incipient speciation in both allopatry (Nichols et al., 2015; Tyers & Turner, 2013), and sympatry (along a depth cline, Malinsky et al., 2015).

In this study, we used common garden laboratory-based experiments to test whether populations of *A. calliptera* differ in clutch size, egg mass, brooding duration, and the speed of early growth. We also tested if the observed variation differs predictably between Lake Malawi and peripheral water bodies, and how evolutionary divergence is associated with trade-offs among life history traits. We expected that occupants of lacustrine sites should possess traits that promote intraspecific competitiveness, namely small broods of larger offspring. In contrast we expected that populations from riverine sites should possess traits that maximize productivity, namely larger broods of smaller offspring. We also assessed the role of selection relative to genetic drift by exploring the relationship between population-level phenotypic divergence of life history traits (Q_{ST}) and population-level genetic divergence (F_{ST}), estimated using allelic variation at microsatellite loci. We predicted that if strong local adaptation in life history traits was taking place, Q_{ST} would be independent of genetic distance between sampling sites.

2 | MATERIALS AND METHODS

2.1 | Collection and animal husbandry

Fish were collected from four Lake Malawi habitats (Chisumulu island, Mbenji island, Mpatsonjoka dambo, and Makanjila) and one peripheral habitat (Linthipe river) in January 2011 (Figure 1, Table 1). Fish derived from a further three peripheral habitats (Enukweni, Ruvuma river, and Lake Chilwa) were taken from third-generation stocks housed in the University of Hull (Figure 1). All fish were kept at a 12 hr: 12 hr light-dark regime and at water temperatures of between 25–28°C. The adults were fed once per day with King British tropical flake and juveniles with Interpet Liquify No3 once a day. All tanks were equipped with UV and biological filters, aeration, synthetic aquarium foliage, and drainpipes of varying diameters that served as shelters.

2.2 | Environmental variables

Several variables were sourced for each sampling location, including water flow (flowing/not flowing), the proximity to water deeper than 20 m (close < 1 km, distant > 1 km) and altitude. Additionally, we derived interpolated monthly temperature and rainfall data from the CRU TS4.0 dataset at a resolution of 0.5° (Harris, Jones, Osborn, & Lister, 2014) for the period January 2001 to December 2015. We then used the “hydrostats” package in R (R Core Team, 2015; <https://github.com/nickbond/hydrostats>) to estimate environmental predictability (tightness of event to season), constancy (uniformity of event through all seasons), and contingency (repeatability of seasonal patterns), following Colwell (1974), using 10 bins of equal sizes in each calculation. To ordinate environmental similarity of sampling sites, we used a Principal Component Analysis based on a correlation matrix, in PAST 3.15 (Hammer, Harper, & Ryan, 2001).

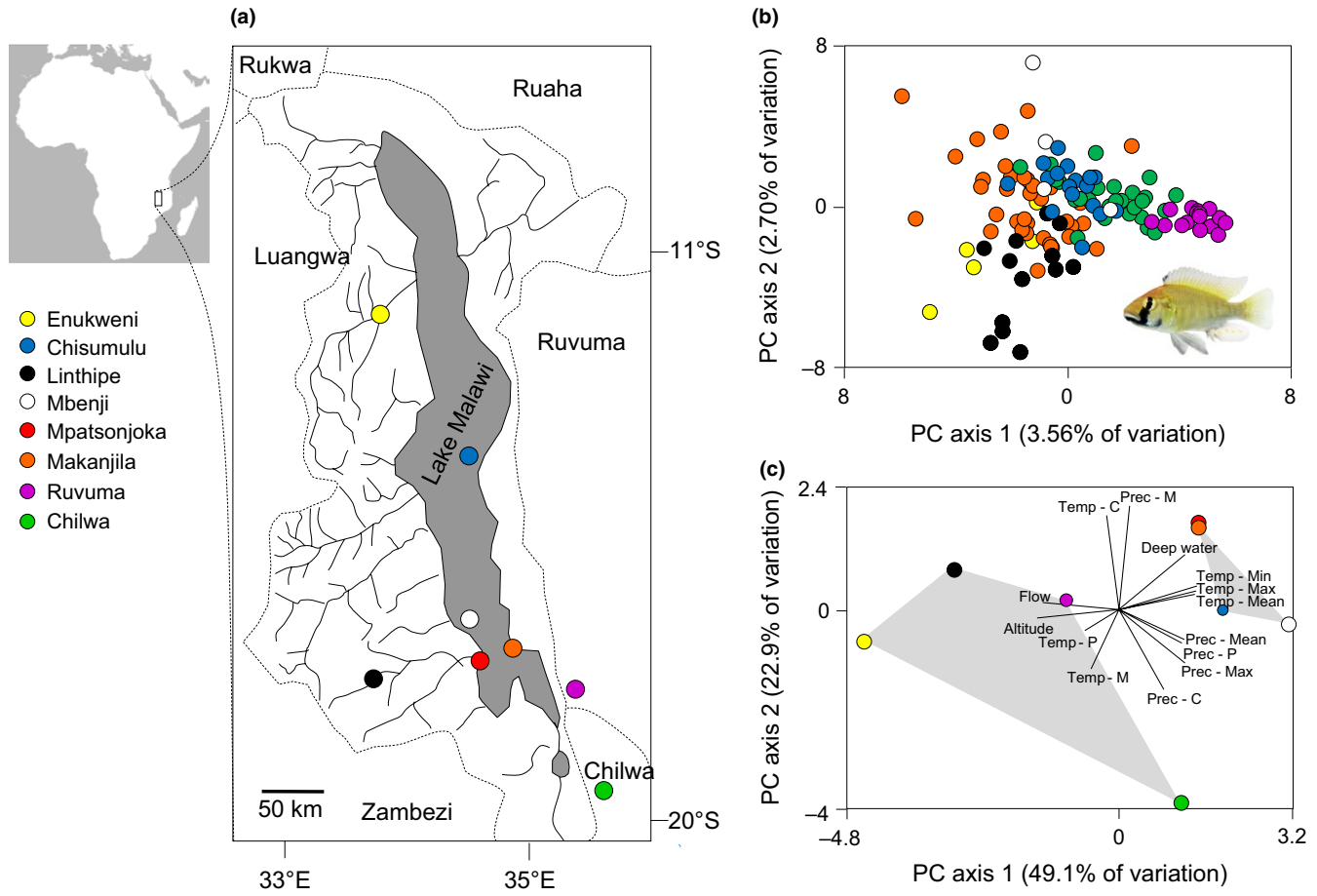


FIGURE 1 (a) Locations of *Astatotilapia calliptera* populations in Malawi studied. For coordinates see Table 1. (b) Ordination of genetic structure among individuals from seven of the studied populations, based on seven microsatellite loci (Table 2). (c) Principal Component Analysis of environmental similarity of source locations, showing Lake Malawi populations (upper right) and peripheral habitat populations (lower left). Labeled lines indicate associations between the labeled variable and the axis of variation. Temp-Max (maximum monthly temperature), Temp-Min (minimum monthly temperature), Temp-Mean (average monthly temperature), Temp-C (temperature constancy), Temp-P (temperature predictability), Temp-M (temperature contingency), Prep-Max (maximum monthly rainfall), Prep-Min (minimum monthly rainfall), Prep-Mean (average monthly rainfall), Prep-C (rainfall constancy), Prep-P (rainfall predictability), Prep-M (rainfall contingency), flow (presence or absence), deep water (close <1 km or distant >1 km)

2.3 | Experimental populations

To ensure individual phenotypes were associated with parental genotypes, stock populations were bred to generate eight G1 (1st generation) populations that maximized available genetic diversity. From these G1 populations, experimental parental fish were drawn. Two separate experiments were performed, the first was aimed at testing differences in clutch size and egg mass among populations. The second was aimed at testing for differences among populations in brood size, brooding duration (incubation time), fry length when released, and juvenile growth rates.

2.4 | Experiment 1

Response variables for the first experiment were clutch size (number of eggs), average individual egg size (g), and total egg investment (g). Between 15 and 21 G1 females from each of the eight populations

were each mated with a single male from the same population (Table 1). Multiple females from the same population were housed in compartments with one male. Tanks were checked at least once daily for females that had spawned. Eggs were stripped from mouthbrooding females by gently pressing on their cheeks and opening and closing their mouth repeatedly. Once all eggs had been removed, each female was weighed using a Mettler Toledo PB602S balance, and the total length (TL) of the female was measured. The number of eggs in the clutch was counted and the eggs dried in an oven for 12 hr at 50°C. Eggs were then weighed on a Mettler Toledo AB54-S balance.

2.5 | Experiment 2

The second experiment used a hierarchical half-sib design to quantify variation among populations and families (males). Response variables were incubation time (number of days from fertilization to release), brood size (number of fry released), and fry total length (at release, at

TABLE 1 Source population sample sites, coordinates (decimal degrees), habitat, and experimental sample sizes

| Population | Latitude °S | Longitude °E | Habitat | Experiment 1 number of clutches ^a | Experiment 2 number of broods ^a | Experiment 2 number of broods ^b |
|-------------------|-------------|--------------|-------------------------------------|---|---|---|
| Chisumulu island | 12.026 | 34.624 | Lake Malawi (island) | 18 | 16 | 10 |
| Mbenji island | 13.437 | 34.490 | Lake Malawi (island) | 15 | 16 | 12 |
| Makanjila | 13.693 | 34.848 | Lake Malawi (lake margin) | 17 | 16 | 12 |
| Mpatsonjoka dambo | 13.786 | 34.585 | Lake Malawi (lake margin) | 16 | 16 | 15 |
| Erukweni | 11.189 | 33.881 | Peripheral habitat (swamp) | 16 | 16 | 14 |
| Linthipe river | 14.177 | 34.126 | Peripheral habitat (river) | 16 | 16 | 16 |
| Chilwa lake | 15.371 | 35.591 | Peripheral habitat (satellite lake) | 18 | 16 | 14 |
| Ruvuma headwaters | 14.373 | 35.548 | Peripheral habitat (river) | 21 | 16 | 14 |

^aEach clutch was from a different female, used for brood size, incubation time and fry length on release.

^bEach clutch was from a different female, used to measure growth.

day 35, at day 70). We generated second-generation family clutches of offspring from four males, each mated with four different females, for each of the eight populations. In total we generated 128 families, and 1,595 individual offspring. This was achieved by housing females in a compartment with one dominant male. Tanks were checked at least once daily for any females that had spawned. Brooding females, easily identifiable by their pronounced gular, were removed from their tank and placed in 16.5 cm × 12.7 cm × 12.7 cm fry nets. We then checked daily to see if the female had released free-swimming fry.

On release of fry, the mother was removed from the fry net, TL measured, and then weighed using a Mettler Toledo PB602S balance. We then calculated incubation time by counting the number of days from egg laying to fry release. The released fry were then placed in a water-filled Petri dish, counted, and photographed with a size standard. They were then returned to their fry net. All broods were limited to 32 individuals, which were chosen at random. These fry were again photographed 35-day postrelease, and 70-day postrelease. Fry total length was measured using ImageJ 1.46 (Schneider, Rasband, & Eliceiri, 2012). Average brood growth rates were calculated as the difference in mean total length of fry in the brood between time points.

2.6 | Genetic differentiation between sites

DNA was extracted from wild collected fish (Table 2 for sample sizes) using the Wizard[®] DNA extraction kit (Promega Corporation, Madison, WI, USA). Samples were genotyped at seven microsatellite DNA loci: *Abur16*, *Abur46* (Sanetra, Henning, Fukamachi, & Meyer, 2009), *Ppun5*, *Ppun7*, *Ppun21*, *Ppun35* (Taylor et al., 2002), and *TmoM5* (Zardoya et al., 1996). Forward primers were labeled using 6-FAM, NED, VIC, PET[®] fluorescent dyes (Applied Biosystems, Inc.,

Foster City, CA, USA). All loci were amplified in the same multiplex reaction using the Qiagen multiplex PCR kit (Qiagen, Venlo, The Netherlands). The reaction contained 1 µl template DNA, 1 µl forward and reverse primer mix (2 pmol/L), 5 µl 2× Multiplex master mix (3 mmol/L MgCl₂), and 3 µl RNase-free water. PCR was performed in a BIO-RAD MyCycler[™] thermal cycler (Bio-Rad Laboratories Inc., Hercules, CA, USA). Reactions consisted of an initial activation step of 15 min at 95°C, followed by 30 cycles of 30 s at 94°C, 90 s at 57°C and 60 s at 72°C and a final elongation step of 30 min at 60°C. PCR product was diluted 1 in 10 and GeneScan 500-LIZ size standard added. Allele size was determined using an ABI 3500 genetic analyser (Applied Biosystems) and alleles called using GeneMapper 3.7 (Applied Biosystems).

2.7 | Experimental data analysis

Response variables were analyzed using General Linear Models (GLMs) in R, with Tukey's HSD post hoc comparisons using an adjusted *p*-value for multiple comparisons. Least-square means of focal response variables, correcting for statistically significant covariables, were calculated using the package "lsmeans" (Lenth & Hervé, 2014). In Experiment 1, we focused on clutch size, average individual egg mass and total egg investment, using female post-spawning TL as a covariate. We noted that female postspawning TL had a strong linear relationship with postspawning mass ($F_{1,136} = 500.935$; $r^2 = .788$; $p < .001$). In Experiment 2, we focussed on brood size, incubation time, average size of fry on release, using female postbrooding TL as covariate. Female postbrooding TL had a strong linear relationship with postbrooding mass ($F_{1,127} = 1324.575$; $r^2 = .913$; $p < .001$). We also considered growth between release and day 35, growth between release and day 70, in these cases using fry rearing densities for the relevant time periods

| | Ppun5 | Abur16 | Ppun7 | Ppun35 | Ppun21 | Abur46 | TmoM5 |
|-------------|-------|--------|-------|--------|--------|--------|-------|
| Mbenji | | | | | | | |
| <i>n</i> | 5 | 3 | 5 | 5 | 5 | 5 | 5 |
| H_O | 1.000 | 0.667 | 0.600 | 0.400 | 0.200 | 0.400 | 0.600 |
| H_E | 0.911 | 0.867 | 0.844 | 0.800 | 0.511 | 0.378 | 0.778 |
| <i>p</i> | 1.000 | .466 | .046 | .029 | .112 | 1.000 | .190 |
| Enukweni | | | | | | | |
| <i>n</i> | 5 | 4 | 5 | 5 | 5 | 5 | 5 |
| H_O | 1.000 | 1.000 | 0.800 | 0.800 | 1.000 | 0.800 | 0.200 |
| H_E | 0.911 | 0.750 | 0.889 | 0.644 | 0.911 | 0.822 | 0.689 |
| <i>p</i> | 1.000 | 1.000 | .612 | 1.000 | 1.000 | .340 | .048 |
| Makanjila | | | | | | | |
| <i>n</i> | 39 | 37 | 39 | 39 | 39 | 39 | 39 |
| H_O | 0.974 | 0.919 | 0.974 | 0.949 | 0.923 | 0.821 | 0.821 |
| H_E | 0.970 | 0.933 | 0.950 | 0.949 | 0.950 | 0.812 | 0.836 |
| <i>p</i> | .744 | .437 | .593 | .313 | .824 | .253 | .495 |
| Lake Chilwa | | | | | | | |
| <i>n</i> | 25 | 25 | 26 | 26 | 26 | 26 | 26 |
| H_O | 0.920 | 0.760 | 0.769 | 1.000 | 0.808 | 0.115 | 0.423 |
| H_E | 0.940 | 0.859 | 0.942 | 0.928 | 0.912 | 0.113 | 0.474 |
| <i>p</i> | .216 | .248 | <.001 | .983 | .123 | 1.000 | .367 |
| Ruvuma | | | | | | | |
| <i>n</i> | 16 | 16 | 16 | 16 | 16 | 16 | 16 |
| H_O | 0.313 | 0.688 | 0.875 | 1.000 | 0.875 | 0.125 | 0.063 |
| H_E | 0.579 | 0.621 | 0.788 | 0.881 | 0.821 | 0.315 | 0.063 |
| <i>p</i> | .001 | .731 | .824 | .774 | .284 | .048 | 1.000 |
| Linthipe | | | | | | | |
| <i>n</i> | 13 | 9 | 13 | 13 | 13 | 13 | 13 |
| H_O | 0.923 | 0.333 | 0.923 | 0.846 | 0.769 | 0.615 | 0.846 |
| H_E | 0.926 | 0.673 | 0.938 | 0.898 | 0.926 | 0.542 | 0.806 |
| <i>p</i> | .891 | .003 | .360 | .843 | .053 | .768 | .501 |
| Chisumulu | | | | | | | |
| <i>n</i> | 17 | 17 | 17 | 17 | 17 | 17 | 17 |
| H_O | 0.941 | 0.824 | 0.941 | 1.000 | 1.000 | 0.353 | 0.824 |
| H_E | 0.939 | 0.768 | 0.959 | 0.964 | 0.932 | 0.319 | 0.768 |
| <i>p</i> | .898 | .881 | .716 | 1.000 | .945 | 1.000 | .166 |

TABLE 2 Genetic variability at seven microsatellite loci in seven populations of *Astatotilapia calliptera*. *n*, number of individual genotypes; H_E , expected heterozygosity; H_O , observed heterozygosity; *p*, significance of deviation from Hardy-Weinberg equilibrium

as covariates. Comparisons of growth rates among populations were restricted to the 107 broods that contained between 5 and 19 individual offspring, inclusive, to reduce bias potentially introduced by variation in rearing density.

We used Principal Component Analysis in PAST 3.15 (Hammer et al., 2001) based on a correlation matrices to summarize associations between response variables measured for each brood in each experiment. From experiment 1, we used the standardized residuals of clutch size, average individual egg mass, and total egg investment from linear regressions against female TL. From experiment 2, we used we used incubation time, average fry TL of brood at release,

standardized residuals of brood size regressed against female TL, and standardized residuals of average growth of each brood regressed against average fry density (\log_{10} transformed) for the corresponding time period.

Response variables measured in experiment 2 were additionally analyzed using a linear mixed model approach within the “lme4” package in R (Bates, Maechler, Bolker, & Walker, 2015) to extract within-population and between-population variance components for the calculation of quantitative trait variation (Q_{ST}). Population was considered a random effect of interest, with male identity set as a random factor nested within population. This enabled the direct estimation

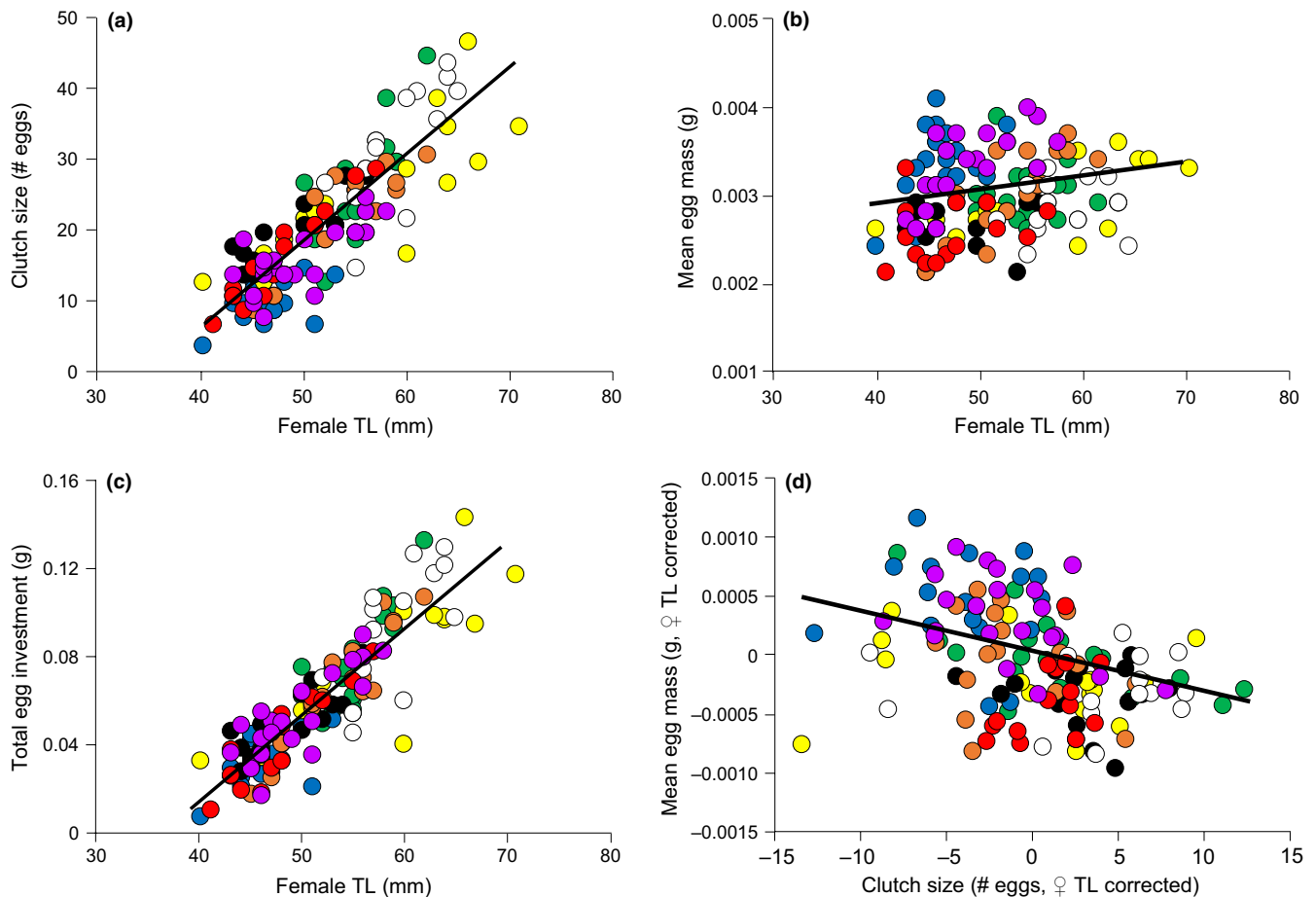


FIGURE 2 Experiment 1: Associations between female TL and (a) the number of eggs in a clutch, (b) the mass of individual eggs, and (c) the mass of the whole clutch (=total egg investment). After correcting for female length there is a trade-off (d) between the number of eggs in a clutch and the mean mass of individual eggs in the clutch. Each point represents one clutch from one female. For population color codes see Figure 1

of between-population variance (V_b), and within-population variation (V_w) was calculated by adding the between-male variation to the residual variation from the model. Q_{ST} values between every population pair were calculated using the following formula (Leinonen, McCairns, O'Hara, & Merilä, 2013; Sæther et al., 2007):

$$Q_{ST} = \frac{V_b}{(2V_w + V_b)}$$

2.8 | Genetic data analysis

Linkage disequilibrium among loci was quantified within populations using GENEPOP 4.2 (Raymond & Rousset, 1995), employing the log-likelihood ratio statistic, 1,000 dememorizations, 100 batches, and 1,000 iterations per batch. Significant linkage disequilibrium was tested across locus pairs using Fisher's method, but no evidence was found. Observed and expected heterozygosity was calculated in Arlequin 3.5 (Excoffier, Laval, & Schneider, 2005). Deviations from Hardy-Weinberg equilibrium were calculated for each locus and each population using an Exact test with 1,000,000 steps in the Markov chain and 100,000 dememorization

steps in Arlequin 3.5. The genetic relationships among populations were estimated using a pairwise F_{ST} distance matrix calculated in GENEPOP 4.2. Genetic distance among individuals was ordinated using a Principal Component Analysis in the "ade4" package in R (Jombart & Ahmed, 2011). Q_{ST} values were compared with F_{ST} between source localities using a Spearman's rank permutation procedure in the "coin" package in R (Hothorn, Hornik, Van De Wiel, & Zeileis, 2008).

3 | RESULTS

3.1 | Environmental variables

Lake Malawi habitats were characterized by a close proximity to deep water, non-flowing waters, relatively low altitude, warm temperatures, high precipitation, low predictability of temperatures, and high predictability of rainfall. By contrast, the peripheral habitats were characterized by absence of deep water, flowing waters, high altitudes, cold temperatures, high predictability, and contingency in temperature, but low predictability of rainfall (Figure 1c).

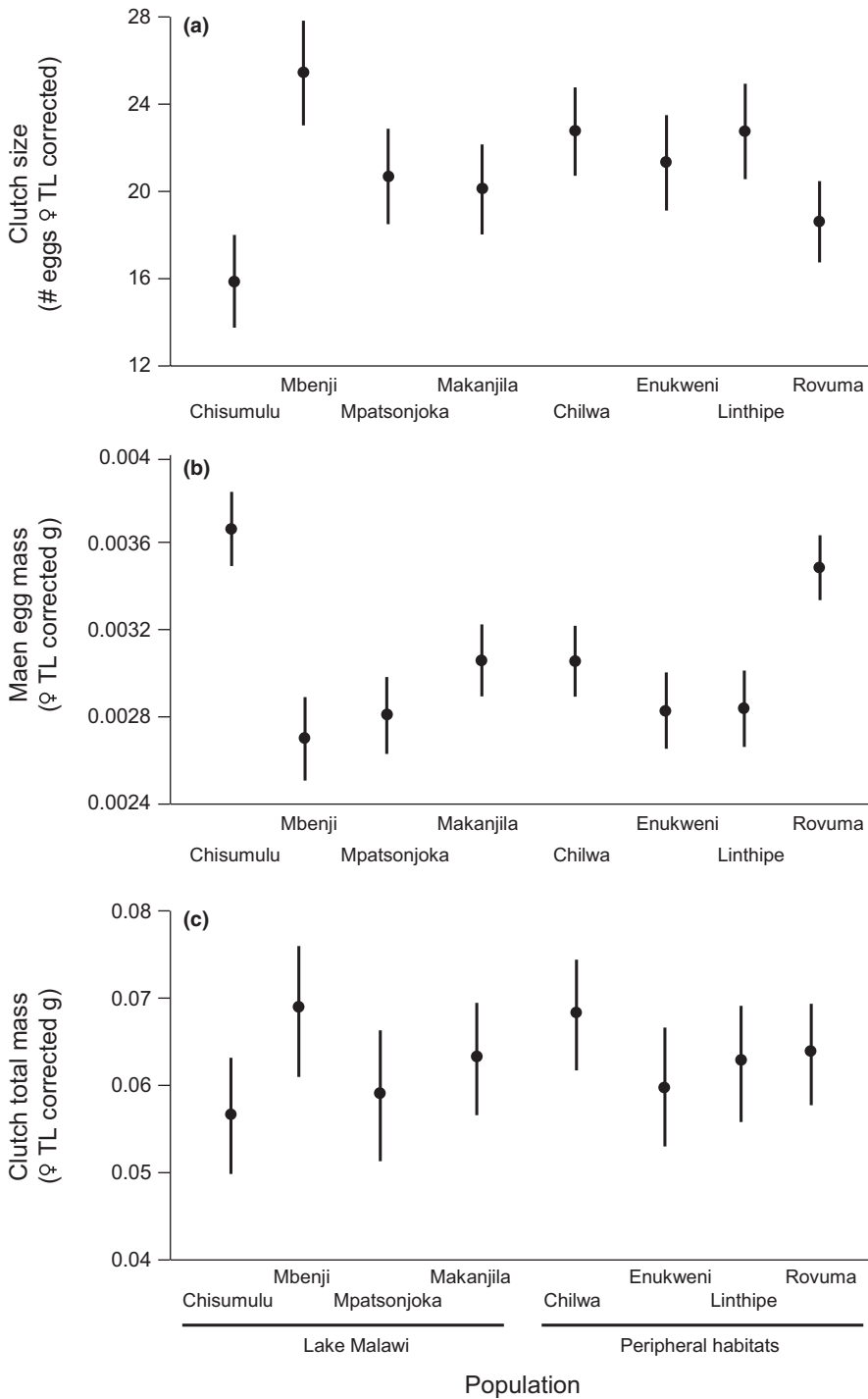


FIGURE 3 Experiment 1. Least-square population means (95% confidence intervals) of measured life history traits. All variables shown are corrected for maternal female total length

3.2 | Experiment 1

Clutch size (# eggs) increased with female total length (TL; Figure 2a) and differed significantly among populations (Figure 3a; Table 3). Post hoc comparisons showed that Chisumulu clutches contained significantly fewer eggs than Chilwa, Erukweni, Linthipe, and Mbenji after correcting for female length. They also showed Mbenji clutches were larger than Makanjila and Rovuma (Table 4). Average egg mass increased with female TL (Figure 2b) and differed significantly among populations (Figure 3a; Table 3). Post hoc comparisons showed that

Chisumulu and Rovuma eggs were larger than all other populations (Table 4). Total egg investment increased with female TL (Figure 2c) but did not significantly differ among populations (Figure 3c; Table 3).

There was a significant negative correlation between clutch size (# eggs) and average egg mass, after correcting for female TL (Pearson's $r = -.393$, $n = 137$, $p < .001$; Figure 2d). There was no significant difference among populations in the association between egg mass (response variable) and number of eggs within those clutches (predictor variable), after correcting for female TL (GLM; $F_{7,120} = 1.834$, $p = .087$), indicating a common trait covariance across populations of

TABLE 3 General linear models of differences among populations in Experiment 1

| Response variable | Predictor variable | df | F | p |
|--------------------------|------------------------|-------|--------|-------|
| Clutch size (n) | Female TL (mm) | 1,121 | 493.36 | <.001 |
| | Population | 7,121 | 6.93 | <.001 |
| | Female TL × Population | 7,121 | 2.88 | .008 |
| | Lake vs. peripheral | 1,5 | 0.125 | .738 |
| Average egg mass (g) | Female TL (mm) | 1,121 | 13.78 | <.001 |
| | Population | 7,121 | 17.30 | <.001 |
| | Female TL × Population | 7,121 | 2.44 | .022 |
| | Lake vs. peripheral | 1,5 | 0.16 | .905 |
| Total egg investment (g) | Female TL | 1,121 | 549.16 | <.001 |
| | Population | 7,121 | 1.53 | .161 |
| | Female TL × Population | 7,121 | 2.32 | .030 |
| | Lake vs. peripheral | 1,5 | 0.442 | .536 |

the species. We found no significant differences between Lake Malawi and peripheral habitat populations in any variables (Table 3).

3.3 | Experiment 2

Brood size increased with female TL (Figure 4a) and differed among populations (Figure 5a; Table 5). However, no pairwise comparisons of populations showed significant differences in brood size (Figure 5a; Table 4). Incubation time was not dependent on female TL, and differed significantly among populations (Figure 5b; Table 5). Post hoc Tukey's HSD tests revealed that Chisumulu, Ruvuma, and Chilwa all had significantly longer brooding times than the Linthipe and Makanjila populations (Table 4). There was a significant negative correlation between incubation period and female TL-corrected brood size (Pearson's $r = -.195$, $n = 128$, $p = .027$; Figure 4d), but no significant correlation between the incubation period and average TL of fry released (Pearson's $r = .084$, $n = 128$, $p = .344$). Mean TL of fry released was not dependent on female TL but did differ among populations (Table 5; Figure 5c). Pairwise comparisons showed Chisumulu fry were larger at the time of release than the fry of all the other sites examined (Table 4).

There was a significant negative correlation between average TL of fry released and female TL-corrected brood size (Pearson's $r = -.252$, $n = 128$, $p = .004$; Figure 4c). However, there was no significant difference among populations in the association between average TL of fry released (response variable) and number of fry within those clutches (predictor variable), after correcting for female TL (GLM; $F_{7,111} = 0.307$, $p = .949$), consistent with common trait covariance across *A. calliptera* populations.

Fry growth to day 35 was negatively related to the densities of individuals in compartments (Figure 4e), and differed among populations (Figure 5d; Table 5). Pairwise comparisons revealed that Chisumulu fry

had grown more at day 35 than those from Chilwa, Makanjila, Mbenji, Mpatsonjoka, and Ruvuma (Table 4). Additionally, Ruvuma populations had grown less than populations from Erukweni and Linthipe (Table 4). Fry growth to day 70 was negatively related to the densities of individuals in compartments (Figure 4f), and differed among populations (Figure 5e). Pairwise comparisons revealed that Chisumulu fry had grown more to day 70 than those from Lake Chilwa and the Ruvuma river (Table 4).

A brood's average fry length on release and was positively related to the length achieved by day 35 (Pearson's $r = .240$, $n = 107$, $p = .013$), and day 70 (Pearson's $r = .30$, $n = 107$, $p = .002$). However, average fry length on release was not significantly associated with either net growth between days 0 and 35 (Pearson's $r = .070$, $n = 107$, $p = .475$) or days 0 and 70 (Pearson's $r = .153$, $n = 107$, $p = .116$). We found no significant differences between Lake Malawi and peripheral habitat populations in any variables (Table 5).

3.4 | Summary of trait covariance

Principal component analysis response variable loadings (>0.4) from Experiment 1 showed a positive covariance between clutch size and total egg investment along PC axis 1, while average egg mass showed variation along PC axis 2 (Figure 6a).

Principal component analysis response variable loadings (>0.4) from Experiment 2 showed a positive covariance between growth to day 35 and growth to day 70 on PC axis 1. There was positive covariance between incubation time and brood's average fry length on release on PC axis 2 that both negatively covaried with brood size (Figure 6b).

3.5 | Genetic differences among populations, and associations between F_{ST} and Q_{ST}

Four of the 49 tests of deviation from Hardy-Weinberg Equilibrium were significant, but these were not consistent across populations or loci (Table 2). There was an overall significant genetic difference among populations ($F_{ST} = 0.102$; $p < .001$; Figure 1) with all population pairs differing significantly ($p < .005$) and F_{ST} values ranging from 0.039 to 0.266 (Appendix 1).

Q_{ST} was not significantly associated with F_{ST} for female size-controlled brood size (Spearman's Rank; $Z = -0.562$; $p = .581$), incubation time ($Z = 0.629$; $p = .537$), fry length on release ($Z = -1.231$; $p = .227$), density-controlled growth rate to day 35 ($Z = -1.086$; $p = .283$), or density-controlled growth rate to day 70 ($Z = -1.147$; $p = .266$). Pairwise comparison between Q_{ST} and F_{ST} indicated pairs of sites exhibiting both stabilizing selection ($F_{ST} > Q_{ST}$) and directional selection ($Q_{ST} > F_{ST}$) (Appendix 1).

4 | DISCUSSION

Our experiments show that populations of *A. calliptera*, a cichlid in the Lake Malawi radiation, have diverged in key life history traits,

TABLE 4 Significance of differences between populations in *post hoc* comparisons of life history traits. Presented are Tukey's HSD *p*-values adjusted for multiple comparisons. Bold indicates *p* < .05

| Population 1 | Population 2 | Experiment 1 | | Experiment 2 | | | | |
|--------------|--------------|--------------------------|----------------------------|-------------------------|-----------------|--------------------|-----------------------------------|-----------------------------------|
| | | Clutch size ^a | Mean egg mass ^a | Brood size ^a | Incubation time | Fry length release | Fry growth 0–35 days ^b | Fry growth 0–70 days ^c |
| Chilwa | Chisumulu | <0.001 | <0.001 | 0.695 | 1.000 | <0.001 | <0.001 | 0.029 |
| Chilwa | Enukweni | 0.975 | 0.513 | 0.974 | 0.747 | 1.000 | 0.126 | 1.000 |
| Chilwa | Linthipe | 1.000 | 0.639 | 0.974 | 0.001 | 1.000 | 0.199 | 0.752 |
| Chilwa | Makanjila | 0.588 | 1.000 | 0.980 | 0.024 | 0.955 | 0.907 | 0.761 |
| Chilwa | Mbenji | 0.644 | 0.076 | 1.000 | 0.396 | 1.000 | 0.906 | 0.975 |
| Chilwa | Mpatsonjoka | 0.883 | 0.509 | 0.943 | 0.483 | 0.647 | 0.513 | 0.802 |
| Chilwa | Ruvuma | 0.077 | 0.006 | 0.999 | 0.993 | 1.000 | 0.999 | 0.947 |
| Chisumulu | Enukweni | 0.020 | <0.001 | 0.190 | 0.662 | <0.001 | 0.156 | 0.071 |
| Chisumulu | Linthipe | <0.001 | <0.001 | 0.127 | <0.001 | <0.001 | 0.065 | 0.500 |
| Chisumulu | Makanjila | 0.113 | <0.001 | 0.147 | 0.016 | <0.001 | 0.007 | 0.645 |
| Chisumulu | Mbenji | <0.001 | <0.001 | 0.540 | 0.317 | <0.001 | 0.006 | 0.293 |
| Chisumulu | Mpatsonjoka | 0.026 | <0.001 | 0.085 | 0.396 | 0.001 | 0.018 | 0.472 |
| Chisumulu | Ruvuma | 0.484 | 0.754 | 0.955 | 0.998 | <0.001 | <0.001 | 0.001 |
| Enukweni | Linthipe | 0.986 | 1.000 | 1.000 | 0.103 | 0.989 | 1.000 | 0.924 |
| Enukweni | Makanjila | 0.992 | 0.517 | 1.000 | 0.662 | 0.833 | 0.875 | 0.920 |
| Enukweni | Mbenji | 0.142 | 0.972 | 0.996 | 0.999 | 0.994 | 0.877 | 0.998 |
| Enukweni | Mpatsonjoka | 1.000 | 1.000 | 1.000 | 1.000 | 0.419 | 0.992 | 0.947 |
| Enukweni | Ruvuma | 0.605 | <0.001 | 0.792 | 0.248 | 0.991 | 0.029 | 0.809 |
| Linthipe | Makanjila | 0.673 | 0.624 | 1.000 | 0.962 | 0.999 | 0.955 | 1.000 |
| Linthipe | Mbenji | 0.758 | 0.973 | 0.997 | 0.317 | 1.000 | 0.955 | 1.000 |
| Linthipe | Mpatsonjoka | 0.867 | 1.000 | 1.000 | 0.248 | 0.917 | 0.999 | 1.000 |
| Linthipe | Ruvuma | 0.075 | <0.001 | 0.738 | <0.001 | 1.000 | 0.047 | 0.118 |
| Makanjila | Mbenji | 0.017 | 0.084 | 0.998 | 0.930 | 0.998 | 1.000 | 0.999 |
| Makanjila | Mpatsonjoka | 1.000 | 0.490 | 1.000 | 0.883 | 0.998 | 0.999 | 1.000 |
| Makanjila | Ruvuma | 0.965 | 0.007 | 0.773 | 0.002 | 0.999 | 0.602 | 0.153 |
| Mbenji | Mpatsonjoka | 0.125 | 0.994 | 0.990 | 1.000 | 0.886 | 0.999 | 1.000 |
| Mbenji | Ruvuma | 0.001 | <0.001 | 0.988 | 0.073 | 1.000 | 0.586 | 0.436 |
| Mpatsonjoka | Ruvuma | 0.829 | <0.001 | 0.634 | 0.103 | 0.905 | 0.180 | 0.147 |

^aAccounting for female TL.^bAccounting for mean fry density days 0–35.^cAccounting for mean fry density days 0–70.

including egg mass, clutch size, brooding time, and offspring growth rates. Although it is plausible that the differences may partly be due to transgenerational effects, our use of parent fish reared in the same laboratory conditions, suggests that the differences among populations cannot readily be attributed to nongenetic influences. Thus, we suggest that differences among populations most likely have a genetic basis, but it is also possible that unmeasured effects such as maternal age may have influenced the results. Additionally, it is possible that wild phenotypes are not reflected in the laboratory stocks, due to the potential for counter-gradient variation operating on life history traits. Another consideration is that we employed Q_{ST} - F_{ST} comparisons, that can be informative for highlighting cases of selection (Leinonen et al., 2013), but can be subject to bias, such as in the mutation rate of

molecular markers employed (e.g., Edelaar, Burraco, & Gomez-Mestre, 2011).

Our source localities were classified broadly into Lake Malawi and peripheral habitats, on the basis of broad differences in environmental conditions. East African riverine environments are prone to strong seasonal and interannual fluctuations in water flow rate, and complete desiccation can take place (Dettinger & Diaz, 2000). By contrast, ancient lakes appear more predictable in depth and in temperature, nutrient regime, and oxygen content. The *r/K* model specifically addresses the role of environmental predictability in determining the evolution of life history strategy (Pianka, 1970; Winemiller & Rose, 1992). This model states that because unpredictable environmental change causes death irrespective of habitat quality, the most

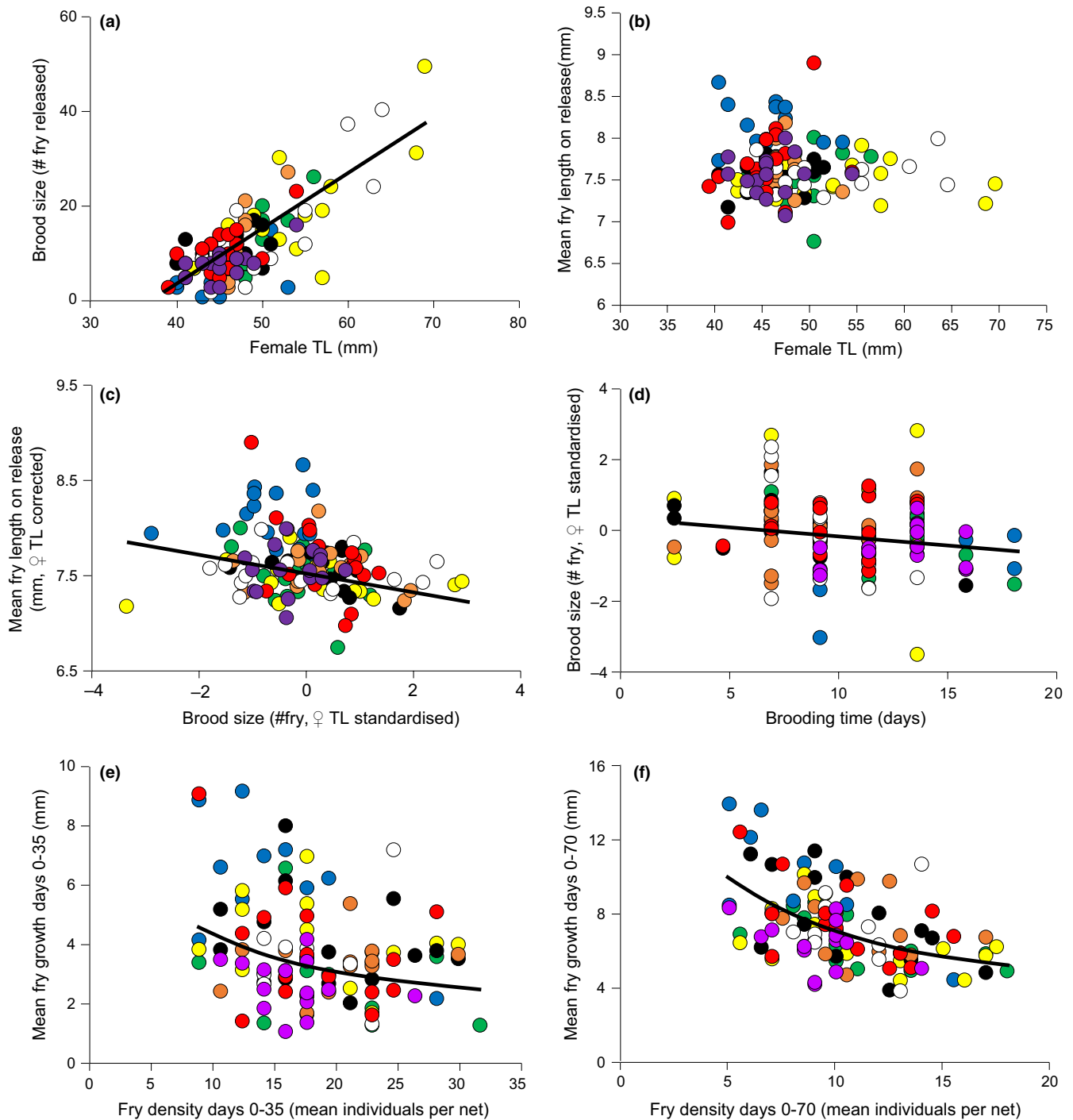


FIGURE 4 Experiment 2: Associations between: (a) brood size and maternal TL. (b) mean fry TL on release and maternal TL. (c) fry TL and brood size by standardized maternal TL. (d) incubation period and brood size by standardized maternal TL. (e) fry growth between days 0–35 in relation to fry density. (f) fry growth between days 0–70 in relation to fry density. For population color codes see Figure 1

important determinants of lifetime reproductive success are survival to reproductive age and rapid reproduction, rather than competitive ability. Traits such as increased fecundity, large dispersal distance, fast growth rate, and early sexual maturity should, therefore, be favored in unpredictable habitats (Pianka, 1970). By contrast, in predictable environments, competitive ability and immunity/predator defences should be maximized because these environments are

saturated by competitors, or parasites, predators, and pathogens (Parker & Begon, 1986). This means that traits such as maternal nutrient provision, gestation time, and parental care duration should be favored in predictable environments (Pianka, 1970). In our analyses, however, we found no consistent differences in clutch size, egg size, or parental care duration between main lake and peripheral habitat populations, suggesting that spatial contrasts in life history traits are

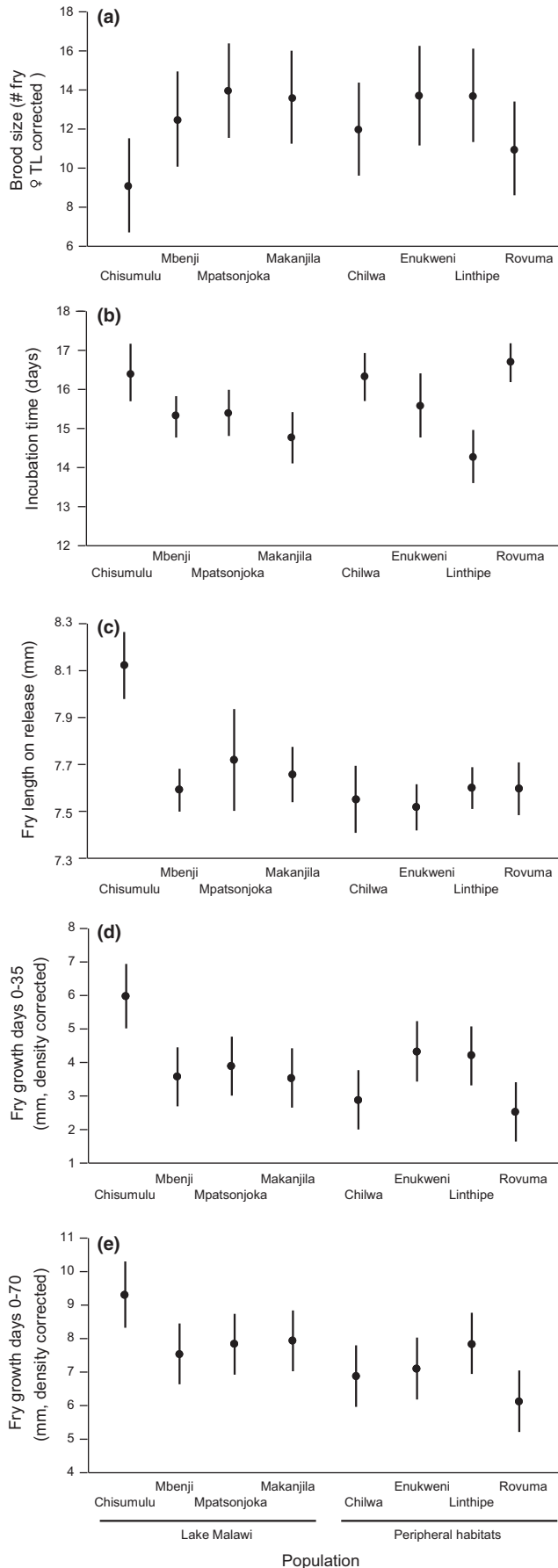


FIGURE 5 Experiment 2. Least-square population means (95% confidence intervals) of measured life history traits. Brood size was adjusted for maternal female total length, while fry length at day 35 and 70 was corrected for rearing density

TABLE 5 General linear models of differences among populations in Experiment 2

| Response variable | Predictor variable | df | F | p |
|------------------------|------------------------------------|------------------------------------|--------|--------|
| Brood size (n) | Female TL (mm) | 1,112 | 191.50 | <.001 |
| | Population | 7,112 | 2.20 | .039 |
| | Female TL × Population | 7,112 | 2.68 | .013 |
| | Lake vs. peripheral | 1,5 | 0.005 | .948 |
| Incubation time (days) | Female TL (mm) | 1,112 | 0.267 | .606 |
| | Population | 7,112 | 6.518 | <.001 |
| | Female TL × Population | 7,112 | 0.961 | .463 |
| | Lake vs. peripheral | 1,5 | 0.160 | .706 |
| Fry TL on release (mm) | Female TL (mm) | 1,112 | 1.062 | .305 |
| | Population | 7,112 | 8.478 | <.001 |
| | Female TL × Population | 7,112 | 1.501 | .174 |
| | Lake vs peripheral | 1,5 | 2.133 | .204 |
| Growth days 0-35 (mm) | Density (\log_{10} individuals) | 1,98 | 8.455 | .005 |
| | Population | 7,98 | 7.045 | <.001 |
| | Lake vs. peripheral | 1,5 | 0.047 | .375 |
| | Growth days 0-70 (mm) | Density (\log_{10} individuals) | 1,98 | 33.121 |
| Growth days 0-70 (mm) | Population | 7,98 | 4.849 | <.001 |
| | Lake vs. peripheral | 1,5 | 3.084 | .375 |

not necessarily related to habitat predictability, as may be expected under an r/K model.

4.1 | Trade-offs between offspring size and offspring number

Our results demonstrate a clear and consistent trade-off between individual egg mass and clutch/brood size in *A. calliptera*. This is perhaps one of the best understood trait correlations, and it has been strongly linked to resource allocation (Messina & Fox, 2001; Smith & Fretwell, 1974). The trade-off occurs because nutrients available to an organism are finite, and females must optimize allocation of these resources, resulting in a negative correlation between investment in individual offspring and the total number of offspring produced (Smith & Fretwell, 1974). In poor quality environments, females should favor a small clutch of highly provisioned offspring (Goulden, Henry, & Berrigan, 1987). By contrast, in high quality environments, females should produce larger clutches of less provisioned offspring

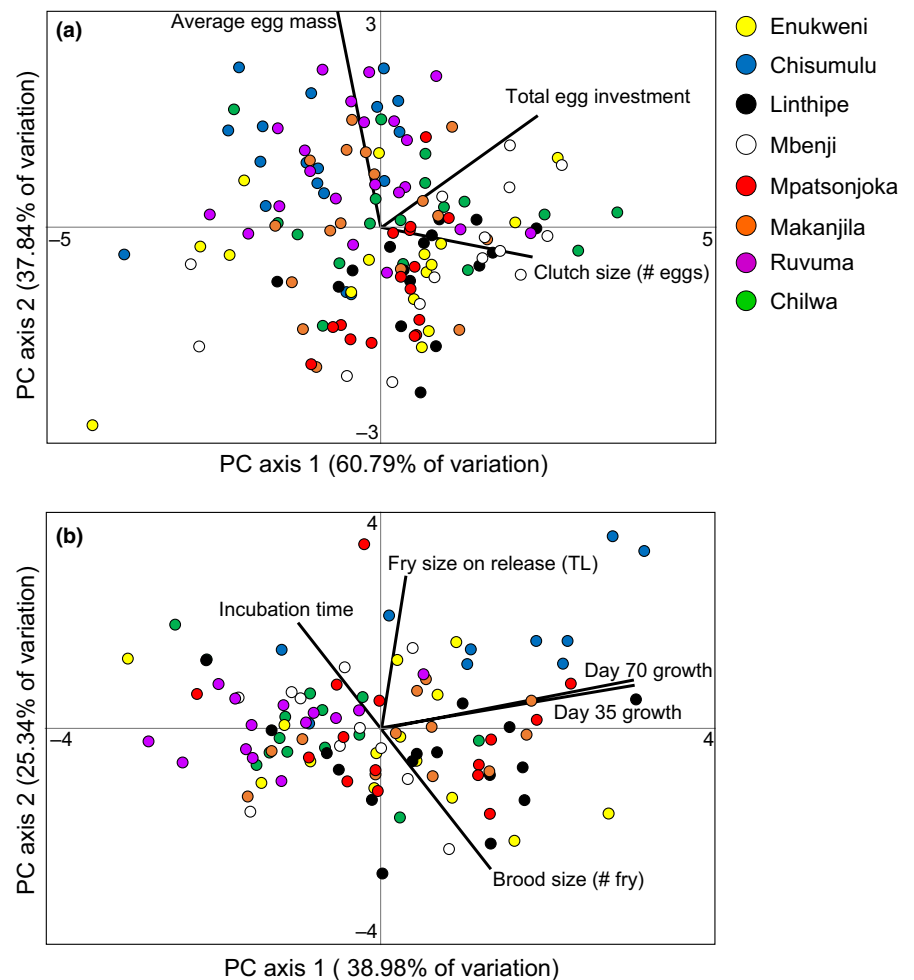


FIGURE 6 Principal component ordinations illustrating correlations between measured life history traits in (a) Experiment 1 and (b) Experiment 2

because the greater resource availability within those habitats will allow offspring to compensate for initially small size through faster growth. It is possible that further work will identify the key limiting resources in the natural environment of the focal species, allowing tests to determine if environmental quality is a predictor of the provisioning strategy.

Alternately, or additionally, population differences offspring size and number may be a consequence of differences in age-dependent among source locations. Investment in a small number of fry in habitats with high juvenile mortality may be risky, more so if a large proportion of mortality is unpredictable. Thus, the results demonstrating a diversity of investment strategies between egg number vs. egg size could be generated by differences in the temporal patterns of survivorship among the source localities. A closer understanding of the environmental variables associated with specific traits will require more detailed information on temporal patterns of survivorship across age classes within populations, and seasonal changes in resource availability.

In addition to life history trade-offs, other factors could contribute to between population-level differences in egg and clutch size, and may constrain adaptive divergence in response to local conditions. In mouthbrooding species such as *A. calliptera*, females store eggs in their mouths after fertilization, meaning that buccal volume

imposes limits on clutch volume (Okuda, Tayasu, & Yanagisawa, 1998; Sefc, 2011). Buccal volume is in turn limited by gill size related to requirements for respiratory function (O'Connor, Reardon, & Chapman, 2012). Mouthbrooding capacity has also been linked to diet and head shape in haplochromine cichlids (Van Wassenbergh, Potes, & Adriaens, 2015; tkint, Verheyen, De Kegel, Helsen, & Adriaens, 2012). There is evidence that *A. calliptera* shows substantial differences in trophic resource use and head shape across its geographic range (P. Parsons, unpublished data). Taken together, it is possible that habitat characteristics such as oxygen concentration and food resource availability may also have driven the observed differences among populations.

4.2 | Offspring size and growth

Our studies demonstrate a strong association between growth rates and rearing densities. This may be due to reduced food being available per individual, as food was not provided in overabundance. Alternatively it could be due to growth suppression induced by other aspects of the experimental conditions (Wedemeyer, 1997), including behavioral interactions among individuals. Such density dependent effects on growth may take place in natural conditions, but at present growth rates of wild fish are unclear. Insight into relative growth rates

of fry in the natural environment could be gained from daily growth ring increments on otoliths (e.g., McLeod et al., 2015).

After controlling for density-related effects on growth, we found that the length of fry on release was correlated with the size of fry after 35 and 70 days. However, we found no significant effect of the initial body size on net growth by days 35 and 70. This is suggestive of all populations exhibiting equivalent growth after the initial head start determined by maternal investment. Thus, our results do not support the model of Smith and Fretwell (1974), where the constraints of the trade-off between offspring investment and number can be mitigated by smaller offspring having an increased growth rate (compensatory growth), enabling them to rapidly match the body size of more highly invested offspring. However, it is possible that initial maternal investment will affect multiple other offspring traits throughout their lifetime (Altmann & Alberts, 2004; Crean, Monro, & Marshall, 2011; Rius, Turon, Dias, & Marshall, 2010), and will not necessarily lessen in importance with age (Donelson, Munday, & McCormick, 2009; Heath, Fox, & Heath, 1999; Segers, Berishvili, & Taborsky, 2012).

4.3 | Incubation time and fry length

Although we found significant differences in brooding duration among populations and that brooding duration tended to be longer in smaller broods, we found no significant relationship between incubation length and fry length. This was unexpected, given evidence that the Lake Tanganyika haplochromine cichlid *Ctenochromis horei* extends incubation period by approximately 4 days in the presence of predators and that this yields fry that are approximately 15% longer on release (Taborsky & Foerster, 2004). Incubation period may be related to aspects of fry morphology that were not assessed in this study. For example, we only measured fry length and it is possible that extra incubation yields higher body width and/or body mass (Gillooly, Charnov, West, Savage, & Brown, 2002), or other benefits such as increased immunity or brain development. Increased gestation associated with more extensive brain development has also been reported in mammals (Barton & Capellini, 2011; Sacher & Staffeldt, 1974). Also, since personality has been linked to several life history traits (Biro & Stamps, 2008; Niemela, Dingemans, Alioravainen, Vainikka, & Kortet, 2013; Schuett et al., 2014; Wolf, van Doorn, Leimar, & Weissing, 2007), brood time may be related to particular personality traits that vary among *A. calliptera* populations. It is also not clear why incubation time should be negatively related to brood size. However, as smaller broods were persistently correlated with larger eggs and fry on release, these may require a greater duration of mouthbrooding.

4.4 | Covariance among life history traits

Our results demonstrating trade-offs and covariance between life history characteristics suggest that traits are not necessarily optimized by selection independently of each other, and that they can be intrinsically correlated in complex ways. In addition to correlations resulting from fundamental ecological trade-offs driven by resource allocation, other factors such as genomic associations between traits that are

driven by pleiotropy or linkage disequilibria may be important (Roff, 2007; Stearns, 1989). In the context of evolutionary divergence and adaptive radiation, such trait covariances could also prevent populations from reaching the adaptive peaks predicted by life history theory and local ecological conditions, and may therefore slow adaptive radiation more generally. It may be the case that persistent correlations between key traits across populations have constrained adaptive diversification (and specialization) between lacustrine or peripheral environments.

4.5 | Rapid adaptive evolution in haplochromine cichlids

Exceptional rates of speciation and adaptive radiation of cichlids are often associated with strong selection on traits linked to sexual selection, habitat use or feeding ecology (Kocher, 2004; Malinsky et al., 2015; Wagner, Harmon, & Seehausen, 2012). The enhanced rates of adaptive radiation seen in lakes relative to surrounding rivers may be a consequence of both a complex adaptive landscape in lakes and that these landscapes persist for long enough (and populations are large enough) to permit adaptation in both ecological and sexually selected traits (Bridle & Jiggins, 2000; Seehausen, 2015). However, much less attention has been paid to selection on life history traits in cichlids, and how adaptive divergence in these traits is related to patterns of genetic population structure, structure, and stability of the immediate environment, as well as covariances among traits. Our results are consistent with the concept that genetic population structure is associated with divergence in life history traits, and in principle divergence of these populations may be promoted by selection acting against migrant genotypes linked to poorly adapted life history phenotypes.

The importance of life history evolution in rapid cichlid adaptive radiation is supported by comparative work on Lake Tanganyika and Lake Malawi cichlids, which demonstrates significant associations between individual egg mass and habitat use (Duponchelle et al., 2008), where pelagic species had larger eggs and lower fecundity than benthic and rock dwelling species. By contrast, our study provides no strong evidence for evolutionary divergence in life history traits among conspecific populations of cichlids linked to habitat, but it does provide evidence of persistent correlations among traits that in principle may limit the ability of populations of this focal species to reach adaptive peaks. Such constraints on adaptive diversification may partly explain why, uniquely among the Lake Malawi haplochromine species, *A. calliptera* retains a broad ecological niche, and is found in both riverine and lake habitats, despite their strongly contrasting ecologies. To more comprehensively understand the influence of environmental variability on life history trait evolution, we need more information on which traits covary, the underlying reasons for that covariance, and the extent to which such covariances promote or restrict rapid adaptive divergence in novel environments.

ACKNOWLEDGMENTS

The work was funded by a NERC-CASE studentship NE/H018115/1 that supported PJP. We thank H. Sungani for collaborating on

fieldwork, the Fisheries Research Unit of the Government of Malawi for research permission, and the University of Bristol genomics facility for assistance with genotyping.

CONFLICT OF INTEREST

None declared.

AUTHOR CONTRIBUTIONS

MJG, LR, and JB conceived the research program. MJG, PJP, and JB conducted the fieldwork. PJP and MJG conducted the laboratory rearing trials, analyzed the data, and drafted the manuscript. All authors contributed the interpretation of data, revisions of the manuscript and approved the final version.

DATA ACCESSIBILITY

Environmental, genetic and experimental data are on Dryad (<https://doi.org/10.5061/dryad.6ps78>).

REFERENCES

- Altmann, J., & Alberts, S. C. (2004). Growth rates in a wild primate population: Ecological influences and maternal effects. *Behavioral Ecology and Sociobiology*, *57*, 490–501.
- Barton, R. A., & Capellini, I. (2011). Maternal investment, life histories, and the costs of brain growth in mammals. *Proceedings of the National Academy of Sciences of the United States of America*, *108*, 6169–6174.
- Bashley, F. (2008). Competition as a selective mechanism for larger offspring size in guppies. *Oikos*, *117*, 104–113.
- Bates, D., Maechler, M., Bolker, B. & Walker, S. (2015). Fitting linear mixed-effects models using lme4. *Journal of Statistical Software*, *67*, 1–48.
- Biro, P. A., & Stamps, J. A. (2008). Are animal personality traits linked to life-history productivity? *Trends in Ecology & Evolution*, *23*, 361–368.
- Bridle, J. R., & Jiggins, C. D. (2000). Adaptive dynamics: Is speciation too easy? *Trends in Ecology & Evolution*, *6*, 225–226.
- Burgess, S. C., & Marshall, D. J. (2014). Adaptive parental effects: The importance of estimating environmental predictability and offspring fitness appropriately. *Oikos*, *123*, 769–776.
- Colwell, R. K. (1974). Predictability, constancy, and contingency of periodic phenomena. *Ecology*, *55*, 1148–1153.
- Crean, A. J., Monro, K., & Marshall, D. J. (2011). Fitness consequences of larval traits persist across the metamorphic boundary. *Evolution*, *65*, 3079–3089.
- Dettinger, M. D., & Diaz, H. F. (2000). Global characteristics of stream flow seasonality and variability. *Journal of Hydrometeorology*, *1*, 289–310.
- Donelson, J. M., Munday, P. L., & McCormick, M. I. (2009). Parental effects on offspring life histories: When are they important? *Biology Letters*, *5*, 262–265.
- Duponchelle, F., Paradis, E., Ribbink, A. J., & Turner, G. F. (2008). Parallel life history evolution in mouthbrooding cichlids from the African Great Lakes. *Proceedings of the National Academy of Sciences of the United States of America*, *105*, 15475–15480.
- Edelaar, P. I. M., Burraco, P., & Gomez-Mestre, I. (2011). Comparisons between Q_{ST} and F_{ST} - how wrong have we been? *Molecular Ecology*, *20*, 4830–4839.
- Excoffier, L., Laval, G., & Schneider, S. (2005). Arlequin (version 3.0): An integrated software package for population genetics data analysis. *Evolutionary Bioinformatics Online*, *1*, 47–50.
- Gillooly, J. F., Charnov, E. L., West, G. B., Savage, V. M., & Brown, J. H. (2002). Effects of size and temperature on developmental time. *Nature*, *417*, 70–73.
- Goulden, C., Henry, L., & Berrigan, D. (1987). Egg size, postembryonic yolk, and survival ability. *Oecologia*, *72*, 28–31.
- Hammer, Ø., Harper, D. A. T., & Ryan, P. D. (2001). PAST-palaeontological statistics, ver. 1.89. *Palaeontologia Electronica*, *4*, 1.
- Harris, I. P. D. J., Jones, P. D., Osborn, T. J., & Lister, D. H. (2014). Updated high-resolution grids of monthly climatic observations—the CRU TS3.10 Dataset. *International Journal of Climatology*, *34*, 623–642.
- Heath, D. D., Fox, C. W., & Heath, J. W. (1999). Maternal effects on offspring size: Variation through early development of chinook salmon. *Evolution*, *53*, 1605–1611.
- Hothorn, T., Hornik, K., Van De Wiel, M. A., & Zeileis, A. (2008). Implementing a class of permutation tests: The coin package. *Journal of Statistical Software*, *28*, 8.
- Hutchings, J. A. (1991). Fitness consequences of variation in egg size and food abundance in brook trout *Salvelinus fontinalis*. *Evolution*, *45*, 1162–1168.
- Jombart, T., & Ahmed, I. (2011). adegenet 1.3-1: New tools for the analysis of genome-wide SNP data. *Bioinformatics*, *27*, 3070–3071.
- Kingdon, M., Bootsma, H. A., Mwita, J., Mwichande, B., & Hecky, R. E. (1999). River discharge and water quality. In R. Hecky & H. A. Bootsma (Eds.), *Water Quality Report, Lake Malawi/Nyasa Biodiversity Conservation Project* (pp. 29–69). Salima: South African Development Community/World Bank Global Environment Facility Lake Malawi/Nyasa Biodiversity Conservation Project.
- Kocher, T. D. (2004). Adaptive evolution and explosive speciation: The cichlid fish model. *Nature Reviews Genetics*, *5*, 288–298.
- Konings, A. (2007). *Malawi cichlids in their natural habitat*, 4th ed. El Paso: Cichlid Press.
- Leinonen, T., McCairns, R. S., O'Hara, R. B., & Merilä, J. (2013). QST-FST comparisons: Evolutionary and ecological insights from genomic heterogeneity. *Nature Reviews Genetics*, *14*, 179–190.
- Lenth, R. V., & Hervé, M. (2014). lsmeans: Least-Squares Means. R package (version 2.13). Retrieved from <http://CRAN.R-project.org/package=lsmeans>
- Malinsky, M., Challis, R. J., Tyers, A. M., Schiffels, S., Terai, Y., Ngatunga, B. P., ... Turner, G. F. (2015). Genomic islands of speciation separate cichlid ecomorphs in an East African crater lake. *Science*, *350*, 1493–1498.
- Malinsky, M., Svardal, H., Tyers, A. M., Miska, E. A., Genner, M. J., Turner, G. F., & Durbin, R. (2017). Whole genome sequences of Malawi cichlids reveal multiple radiations interconnected by gene flow. *bioRxiv*, 143859.
- McLeod, I. M., McCormick, M. I., Munday, P. L., Clark, T. D., Wenger, A. S., Brooker, R. M., ... Jones, G. P. (2015). Latitudinal variation in larval development of coral reef fishes: Implications of a warming ocean. *Marine Ecology Progress Series*, *521*, 129–141.
- Messina, F. J., & Fox, C. (2001). Offspring size and number. In C. W. Fox, D. A. Roff, & D. J. Fairbairn (Eds.), *Evolutionary ecology: Concepts and case studies* (pp. 113–127). New York, NY: Oxford University Press.
- Morrongioello, J. R., Bond, N. R., Crook, D. A., & Wong, B. B. M. (2012). Spatial variation in egg size and egg number reflects trade-offs and bet-hedging in a freshwater fish. *Journal of Animal Ecology*, *81*, 806–817.
- Nichols, P., Genner, M. J., Van Oosterhout, C., Smith, A., Parsons, P., Sungani, H., ... Joyce, D. A. (2015). Secondary contact seeds phenotypic novelty in cichlid fishes. *Proceedings of the Royal Society B-Biological Sciences*, *282*, 20142272.
- Nicholson, S. E. (1998). Fluctuations of Rift Valley Lakes Malawi and Chilwa during historical times: A synthesis of geological, archaeological and historical information. In J. T. Lehman (Ed.), *Environmental change and response in East African lakes* (pp. 207–231). Dordrecht: Springer Netherlands.
- Niemela, P. T., Dingemans, N. J., Alioravainen, N., Vainikka, A., & Kortet, R. (2013). Personality pace-of-life hypothesis: Testing genetic associations among personality and life history. *Behavioral Ecology*, *24*, 935–941.

- O'Connor, C. M., Reardon, E. E., & Chapman, L. J. (2012). Shorter gills in mouth-brooding females of the cichlid *Pseudocrenilabrus multicolor*. *Copeia*, 2012, 382–388.
- Okuda, N., Tayasu, I., & Yanagisawa, Y. (1998). Determinate growth in a paternal mouthbrooding fish whose reproductive success is limited by buccal capacity. *Evolutionary Ecology*, 2, 681–699.
- Parker, G. A., & Begon, M. (1986). Optimal egg size and clutch size: Effects of environment and maternal phenotype. *American Naturalist*, 128, 573–592.
- Pauw, K., Thurlow, J., & Van Seventer, D. (2010). *Droughts and floods in Malawi: Assessing the economywide effects*. Discussion Paper 00692. Washington, D.C., USA: International Food Policy Research Institute.
- Pianka, E. R. (1970). On r- and K-selection. *American Naturalist*, 104, 592–597.
- R Core Team. (2015). *R: A language and environment for statistical computing*. Vienna, Austria: R Foundation for Statistical Computing. Retrieved from <http://www.R-project.org/>
- Raymond, M., & Rousset, F. (1995). GENEPOP (Version 1.2): Population genetics software for exact tests and ecumenicism. *Journal of Heredity*, 86, 248–249.
- Reznick, D. N., Bryga, H. A., & Endler, J. A. (1990). Experimentally induced life-history evolution in a natural population. *Nature*, 346, 357–359.
- Ribbink, A. (1990). Alternative life-history styles of some African cichlid fishes. *Environmental Biology of Fishes*, 28, 87–100.
- Riesch, R., Plath, M., & Schlupp, I. (2012). The offspring size/fecundity trade-off and female fitness in the Atlantic molly (*Poecilia mexicana*, Poeciliidae). *Environmental Biology of Fishes*, 94, 457–463.
- Rius, M., Turon, X., Dias, G. M., & Marshall, D. J. (2010). Propagule size effects across multiple life-history stages in a marine invertebrate. *Functional Ecology*, 24, 685–693.
- Roff, D. A. (2007). Contributions of genomics to life-history theory. *Nature Reviews Genetics*, 8, 116–125.
- Rollinson, N., & Hutchings, J. A. (2013). Environmental quality predicts optimal egg size in the wild. *American Naturalist*, 182, 76–90.
- Sacher, G., & Staffeldt, E. (1974). Relation of gestation time to brain weight for placental mammals: Implications for the theory of vertebrate growth. *American Naturalist*, 108, 593–615.
- Sæther, S. A., Fiske, P., Kålås, J. A., Kuresoo, A., Luigujoe, L., Piortney, S. B., ... Höglund, J. (2007). Inferring local adaptation from QST–FST comparisons: Neutral genetic and quantitative trait variation in European populations of great snipe. *Journal of Evolutionary Biology*, 20, 1563–1576.
- Sanetra, M., Henning, F., Fukamachi, S., & Meyer, A. (2009). A microsatellite-based genetic linkage map of the cichlid fish, *Astatotilapia burtoni* (Teleostei): A comparison of genomic architectures among rapidly speciating cichlids. *Genetics*, 182, 387–397.
- Schluter, D. (2000). *The ecology of adaptive radiation*. Oxford: Oxford University Press.
- Schneider, C. A., Rasband, W. S., & Eliceiri, K. W. (2012). NIH Image to ImageJ: 25 years of image analysis. *Nature Methods*, 9, 671–675.
- Scholz, C. A., Cohen, A. S., Johnson, T. C., King, J., Talbot, M. R., & Brown, E. T. (2011). Scientific drilling in the Great Rift Valley: The 2005 Lake Malawi Scientific Drilling Project – An overview of the past 145,000 years of climate variability in Southern Hemisphere East Africa. *Palaeogeography, Palaeoclimatology, Palaeoecology*, 303, 3–19.
- Schuett, W., Dall, S. R. X., Kloesener, M. H., Baeumer, J., Beinlich, F., & Eggers, T. (2014). Life-history trade-offs mediate “personality” variation in two colour morphs of the pea aphid, *Acyrtosiphon pisum*. *Journal of Animal Ecology*, 84, 90–101.
- Seehausen, O. (2015). Process and pattern in cichlid radiations–inferences for understanding unusually high rates of evolutionary diversification. *New Phytologist*, 207, 304–312.
- Sefc, K. M. (2011). Mating and parental care in Lake Tanganyika's cichlids. *International Journal of Evolutionary Biology*, 2011, 470875.
- Segers, F. H. I. D., Berishvili, G., & Taborsky, B. (2012). Egg size-dependent expression of growth hormone receptor accompanies compensatory growth in fish. *Proceedings of the Royal Society B-Biological Sciences*, 279, 592–600.
- Segers, F. H. I. D., & Taborsky, B. (2011). Egg size and food abundance interactively affect juvenile growth and behaviour. *Functional Ecology*, 25, 166–176.
- Segers, F. H. I. D., & Taborsky, B. (2012). Juvenile exposure to predator cues induces a larger egg size in fish. *Proceedings of the Royal Society B-Biological Sciences*, 279, 1241–1248.
- Smith, C. C., & Fretwell, S. D. (1974). The optimal balance between size and number of offspring. *American Naturalist*, 108, 499–506.
- Sogard, S. (1997). Size-selective mortality in the juvenile stage of teleost fishes: A review. *Bulletin of Marine Science*, 60, 1129–1157.
- Stearns, S. C. (1989). Trade-offs in life-history evolution. *Functional Ecology*, 3, 259–268.
- Taborsky, B., & Foerster, K. (2004). Female mouthbrooders adjust incubation duration to perceived risk of predation. *Animal Behavior*, 68, 1275–1281.
- Taylor, M. I., Meardon, F., Turner, G., Seehausen, O., Mrosso, H. D. J., & Rico, C. (2002). Characterization of tetranucleotide microsatellite loci in a Lake Victorian, haplochromine cichlid fish: A *Pundamilia pundamilia* × *Pundamilia nyererei* hybrid. *Molecular Ecology Notes*, 2, 443–445.
- tkint, T., Verheyen, E., De Kegel, B., Helsen, P., & Adriaens, D. (2012). Dealing with food and eggs in mouthbrooding cichlids: Structural and functional trade-offs in fitness related traits. *PLoS ONE*, 7, e31117.
- Tyers, A. M., & Turner, G. F. (2013). Signal and preference divergence among populations of the non-endemic basal Lake Malawi cichlid fish *Astatotilapia calliptera* (Perciformes: Cichlidae). *Biological Journal of the Linnean Society*, 110, 180–188.
- Van Wassenbergh, S., Potes, N. Z., & Adriaens, D. (2015). Hydrodynamic drag constrains head enlargement for mouthbrooding in cichlids. *Journal of the Royal Society Interface*, 12, 20150461.
- Wagner, C. E., Harmon, L. J., & Seehausen, O. (2012). Ecological opportunity and sexual selection together predict adaptive radiation. *Nature*, 487, 366–369.
- Wedemeyer, G. A. (1997). Effects of rearing conditions on the health and physiological quality of fish in intensive culture. In G. K. Iwama, A. D. Pickering, J. P. Sumpter & C. B. Schrek (Eds.), *Fish stress and health in aquaculture* (pp. 35–72). Society for Experiment Biology, Seminar Series 62. Cambridge: Cambridge University Press.
- Winemiller, K. O. (2005). Life history strategies, population regulation, and implications for fisheries management. *Canadian Journal of Fisheries and Aquatic Science*, 62, 872–885.
- Winemiller, K. O., & Rose, K. A. (1992). Patterns of life-history diversification in North American fishes: Implications for population regulation. *Canadian Journal of Fisheries and Aquatic Science*, 49, 2196–2218.
- Wolf, M., van Doorn, G. S., Leimar, O., & Weissing, F. J. (2007). Life-history trade-offs favour the evolution of animal personalities. *Nature*, 447, 581–584.
- Zardoya, R., Vollmer, D. M., Craddock, C., Streelman, J. T., Karl, S., & Meyer, A. (1996). Evolutionary conservation of microsatellite flanking regions and their use in resolving the phylogeny of cichlid fishes (Pisces: Perciformes). *Proceedings of the Royal Society B-Biological Sciences*, 263, 1589–1598.

How to cite this article: Parsons PJ, Bridle JR, Rüber L, Genner MJ. Evolutionary divergence in life history traits among populations of the Lake Malawi cichlid fish *Astatotilapia calliptera*. *Ecol Evol*. 2017;7:8488–8506. <https://doi.org/10.1002/ece3.3311>

APPENDIX 1

TABLE A1 Comparison of pairwise genetic distances based on eight microsatellite markers (F_{ST}) versus Quantitative trait differences (Q_{ST}) measured in Experiment 2. Q_{ST} was calculated using the between-population variance (Vb) and within-population variance (Vw) as outlined in the methods

| Population 1 | Population 2 | Trait | Between population | Within population | F_{ST} or Q_{ST} | Population 1 | Population 2 | Trait | Between population | Within population | F_{ST} or Q_{ST} |
|--------------|--------------|-----------------------|--------------------|-------------------|----------------------|--------------|--------------|-----------------------|--------------------|-------------------|----------------------|
| Chisumulu | Chilwa | F_{ST} | | | 0.098 | Eukweni | Makanjila | F_{ST} | | | 0.057 |
| | | Brood size | 3.340 | 14.104 | 0.106 | | | Brood size | 0.000 | 110.799 | 0.000 |
| | | Length fry at release | 0.125 | 0.085 | 0.423 | | | Length fry at release | 0.012 | 0.045 | 0.115 |
| | | Growth days 0-35 | 3.982 | 2.676 | 0.427 | | | Growth days 0-35 | 0.113 | 1.491 | 0.036 |
| | | Growth days 0-70 | 1.931 | 2.988 | 0.244 | | | Growth days 0-70 | 0.000 | 2.837 | 0.000 |
| | | Incubation time | 0.000 | 1.650 | 0.000 | | | Incubation time | 0.172 | 2.524 | 0.033 |
| Chisumulu | Eukweni | F_{ST} | | | 0.159 | Eukweni | Mbenji | F_{ST} | | | 0.159 |
| | | Brood size | 4.534 | 54.190 | 0.040 | | | Brood size | 0.000 | 50.750 | 0.000 |
| | | Length fry at release | 0.121 | 0.058 | 0.508 | | | Length fry at release | 0.000 | 0.042 | 0.000 |
| | | Growth days 0-35 | 0.300 | 2.958 | 0.048 | | | Growth days 0-35 | 0.000 | 2.055 | 0.000 |
| | | Growth days 0-70 | 0.999 | 4.358 | 0.103 | | | Growth days 0-70 | 0.000 | 2.957 | 0.000 |
| | | Incubation time | 0.178 | 2.760 | 0.031 | | | Incubation time | 0.000 | 2.116 | 0.000 |
| Chisumulu | Linthipe | F_{ST} | | | 0.110 | Eukweni | Mpatsonjoka | F_{ST} | | | NA |
| | | Brood size | 0.707 | 9.644 | 0.035 | | | Brood size | 0.000 | 42.930 | 0.000 |
| | | Length fry at release | 0.103 | 0.051 | 0.504 | | | Length fry at release | 0.002 | 0.132 | 0.007 |
| | | Growth days 0-35 | 0.995 | 2.828 | 0.150 | | | Growth days 0-35 | 0.000 | 2.641 | 0.000 |
| | | Growth days 0-70 | 0.000 | 4.385 | 0.000 | | | Growth days 0-70 | 0.000 | 3.006 | 0.000 |
| | | Incubation time | 2.594 | 2.058 | 0.387 | | | Incubation time | 0.000 | 2.146 | 0.000 |
| Chisumulu | Makanjila | F_{ST} | | | 0.039 | Eukweni | Ruvuma | F_{ST} | | | 0.266 |
| | | Brood size | 28.750 | 90.970 | 0.136 | | | Brood size | 0.000 | 73.080 | 0.000 |
| | | Length fry at release | 0.042 | 0.065 | 0.243 | | | Length fry at release | 0.000 | 0.047 | 0.000 |

(Continues)

TABLE A1 (Continued)

| Population 1 | Population 2 | Trait | Between population | Within population | F_{ST} or Q_{ST} | Population 1 | Population 2 | Trait | Between population | Within population | F_{ST} or Q_{ST} |
|--------------|--------------|-----------------------|--------------------|-------------------|----------------------|--------------|--------------|-----------------------|--------------------|-------------------|----------------------|
| | | Growth days 0–35 | 2.779 | 2.414 | 0.365 | | | Growth days 0–35 | 1.303 | 1.359 | 0.324 |
| | | Growth days 0–70 | 0.000 | 4.070 | 0.000 | | | Growth days 0–70 | 0.000 | 2.270 | 0.000 |
| | | Incubation time | 1.525 | 2.033 | 0.273 | | | Incubation time | 0.285 | 2.023 | 0.066 |
| Chisumulu | Mbenji | F_{ST} | | | 0.065 | Linthipe | Makanjila | F_{ST} | | | 0.055 |
| | | Brood size | 4.320 | 11.640 | 0.157 | | | Brood size | 14.690 | 75.200 | 0.089 |
| | | Length fry at release | 0.085 | 0.063 | 0.403 | | | Length fry at release | 0.005 | 0.039 | 0.061 |
| | | Growth days 0–35 | 1.620 | 3.456 | 0.190 | | | Growth days 0–35 | 0.080 | 1.789 | 0.022 |
| | | Growth days 0–70 | 0.299 | 4.458 | 0.032 | | | Growth days 0–70 | 0.000 | 3.480 | 0.000 |
| | | Incubation time | 0.364 | 1.666 | 0.099 | | | Incubation time | 0.000 | 1.888 | 0.000 |
| Chisumulu | Mpatsonjoka | F_{ST} | | | NA | Linthipe | Mbenji | F_{ST} | | | 0.120 |
| | | Brood size | 8.137 | 9.094 | 0.309 | | | Brood size | 0.000 | 10.850 | 0.000 |
| | | Length fry at release | 0.024 | 0.163 | 0.070 | | | Length fry at release | 0.000 | 0.037 | 0.000 |
| | | Growth days 0–35 | 0.638 | 3.856 | 0.076 | | | Growth days 0–35 | 0.000 | 2.307 | 0.000 |
| | | Growth days 0–70 | 0.000 | 3.930 | 0.000 | | | Growth days 0–70 | 0.000 | 3.704 | 0.000 |
| | | Incubation time | 0.497 | 1.745 | 0.125 | | | Incubation time | 0.699 | 1.647 | 0.175 |
| Chisumulu | Ruvuma | F_{ST} | | | 0.165 | Linthipe | Mpatsonjoka | F_{ST} | | | NA |
| | | Brood size | 17.020 | 43.330 | 0.164 | | | Brood size | 1.742 | 8.708 | 0.091 |
| | | Length fry at release | 0.097 | 0.067 | 0.420 | | | Length fry at release | 0.000 | 0.120 | 0.000 |
| | | Growth days 0–35 | 4.720 | 2.166 | 0.521 | | | Growth days 0–35 | 0.000 | 2.791 | 0.000 |
| | | Growth days 0–70 | 3.817 | 3.239 | 0.371 | | | Growth days 0–70 | 0.000 | 3.423 | 0.000 |
| | | Incubation time | 17.020 | 43.330 | 0.164 | | | Incubation time | 0.584 | 1.711 | 0.146 |

(Continues)

TABLE A1 (Continued)

| Population 1 | Population 2 | Trait | Between population | Within population | F_{ST} or Q_{ST} | Population 1 | Population 2 | Trait | Between population | Within population | F_{ST} or Q_{ST} |
|--------------|--------------|-----------------------|--------------------|-------------------|----------------------|--------------|--------------|-----------------------|--------------------|-------------------|----------------------|
| Chilwa | Erukweni | F_{ST} | 0.000 | 47.280 | 0.139 | Linthipe | Ruvuma | F_{ST} | 8.425 | 35.560 | 0.237 |
| | | Brood size | 0.000 | 0.062 | 0.000 | | | Brood size | 0.000 | 0.042 | 0.106 |
| | | Length fry at release | 0.936 | 1.840 | 0.203 | | | Length fry at release | 1.252 | 1.579 | 0.000 |
| | | Growth days 0-35 | 0.000 | 1.961 | 0.000 | | | Growth days 0-35 | 0.919 | 3.118 | 0.128 |
| | | Growth days 0-70 | 0.102 | 2.257 | 0.022 | | | Growth days 0-70 | 2.927 | 1.457 | 0.501 |
| | | Incubation time | | | | | | Incubation time | | | |
| Chilwa | Linthipe | F_{ST} | 0.000 | 10.851 | 0.149 | Makanjila | Mbenji | F_{ST} | 0.000 | 89.270 | 0.062 |
| | | Brood size | 0.000 | 0.058 | 0.000 | | | Brood size | 0.000 | 0.049 | 0.000 |
| | | Length fry at release | 0.752 | 2.073 | 0.154 | | | Length fry at release | 0.000 | 1.380 | 0.000 |
| | | Growth days 0-35 | 0.067 | 2.913 | 0.011 | | | Growth days 0-35 | 0.000 | 3.005 | 0.000 |
| | | Growth days 0-70 | 2.412 | 1.669 | 0.420 | | | Growth days 0-70 | 0.159 | 1.541 | 0.049 |
| | | Incubation time | | | | | | Incubation time | | | |
| Chilwa | Makanjila | F_{ST} | 6.048 | 83.880 | 0.071 | Makanjila | Mpatsonjoka | F_{ST} | 2.437 | 74.751 | NA |
| | | Brood size | 0.011 | 0.070 | 0.035 | | | Brood size | 0.000 | 0.132 | 0.016 |
| | | Length fry at release | 0.090 | 1.494 | 0.029 | | | Length fry at release | 0.000 | 2.414 | 0.000 |
| | | Growth days 0-35 | 0.297 | 2.045 | 0.068 | | | Growth days 0-35 | 0.000 | 2.872 | 0.000 |
| | | Growth days 0-70 | 1.410 | 1.573 | 0.309 | | | Growth days 0-70 | 0.094 | 1.628 | 0.000 |
| | | Incubation time | | | | | | Incubation time | | | 0.028 |
| Chilwa | Mbenji | F_{ST} | 0.000 | 13.695 | 0.098 | Makanjila | Ruvuma | F_{ST} | 0.000 | 98.510 | 0.156 |
| | | Brood size | 0.000 | 0.067 | 0.000 | | | Brood size | 0.003 | 0.053 | 0.000 |
| | | Length fry at release | | | | | | Length fry at release | | | 0.032 |

(Continues)

TABLE A1 (Continued)

| Population 1 | Population 2 | Trait | Between population | Within population | F_{ST} or Q_{ST} | Population 1 | Population 2 | Trait | Between population | Within population | F_{ST} or Q_{ST} |
|--------------|--------------|-----------------------|--------------------|-------------------|----------------------|--------------|--------------|-----------------------|--------------------|-------------------|----------------------|
| | | Growth days 0–35 | 0.086 | 2.102 | 0.020 | | | Growth days 0–35 | 0.191 | 0.855 | 0.100 |
| | | Growth days 0–70 | 0.000 | 2.225 | 0.000 | | | Growth days 0–70 | 0.920 | 2.275 | 0.168 |
| | | Incubation time | 0.325 | 1.282 | 0.112 | | | Incubation time | 1.781 | 1.323 | 0.402 |
| Chilwa | Mpatsonjoka | F_{ST} | | | NA | Mbenji | Mpatsonjoka | F_{ST} | | | NA |
| | | Brood size | 0.000 | 13.695 | 0.000 | | | Brood size | 0.000 | 9.094 | 0.000 |
| | | Length fry at release | 0.000 | 0.067 | 0.000 | | | Length fry at release | 0.000 | 0.135 | 0.000 |
| | | Growth days 0–35 | 0.086 | 2.102 | 0.020 | | | Growth days 0–35 | 0.000 | 2.915 | 0.000 |
| | | Growth days 0–70 | 0.000 | 2.225 | 0.000 | | | Growth days 0–70 | 0.000 | 3.083 | 0.000 |
| | | Incubation time | 0.325 | 1.282 | 0.112 | | | Incubation time | 0.000 | 1.277 | 0.000 |
| Chilwa | Ruvuma | F_{ST} | | | 0.107 | Mbenji | Ruvuma | F_{ST} | | | 0.237 |
| | | Brood size | 5.734 | 39.000 | 0.068 | | | Brood size | 1.012 | 41.562 | 0.012 |
| | | Length fry at release | 0.000 | 0.071 | 0.000 | | | Length fry at release | 0.000 | 0.049 | 0.000 |
| | | Growth days 0–35 | 0.000 | 1.284 | 0.000 | | | Growth days 0–35 | 0.230 | 1.506 | 0.071 |
| | | Growth days 0–70 | 0.000 | 1.416 | 0.000 | | | Growth days 0–70 | 0.430 | 2.466 | 0.080 |
| | | Incubation time | 0.000 | 1.070 | 0.000 | | | Incubation time | 0.608 | 1.034 | 0.227 |
| Erukweni | Linthipe | F_{ST} | | | 0.108 | Mpatsonjoka | Ruvuma | F_{ST} | | | NA |
| | | Brood size | 0.000 | 43.920 | 0.000 | | | Brood size | 0.604 | 35.630 | 0.008 |
| | | Length fry at release | 0.000 | 0.036 | 0.000 | | | Length fry at release | 0.000 | 0.136 | 0.000 |
| | | Growth days 0–35 | 0.000 | 1.940 | 0.000 | | | Growth days 0–35 | 0.457 | 2.334 | 0.089 |
| | | Growth days 0–70 | 0.000 | 3.675 | 0.000 | | | Growth days 0–70 | 0.848 | 2.480 | 0.146 |
| | | Incubation time | 0.805 | 2.496 | 0.139 | | | Incubation time | 0.709 | 1.183 | 0.230 |