



Correction to: Effectiveness of adjunctive hyaluronic acid application in coronally advanced flap in Miller class I single gingival recession sites: a randomized controlled clinical trial

Andrea Pilloni¹ · Patrick R. Schmidlin² · Philipp Sahrman² · Anton Sculean³ · Mariana A. Rojas¹ 

Published online: 20 July 2018

© Springer-Verlag GmbH Germany, part of Springer Nature 2018

Correction to: Clinical Oral Investigations

<https://doi.org/10.1007/s00784-018-2537-4>

The figure 2 of the original version of this article was incorrect. Correct figure is presented below.

In this connection, figure 2 caption needs to be corrected as.

And also a part of Surgical procedure section, page 3, paragraph 2 to:

Following local anesthesia, two oblique and divergent releasing incisions extending beyond the mucogingival junction (MGJ) were performed. An intra-sulcular incision was performed at the buccal aspect of the involved tooth (Figs. 2a, and 3a, b). Care was taken to raise split thickness surgical papillae. A full thickness flap until the MGJ was then elevated using a small periosteal elevator. Subsequently, a partial thickness flap was raised beyond the MGJ, eliminating residual tension to achieve a passive coronal displacement of the flap (Figs. 2b and 3b) A gentle root planing was performed using a curette up to 1 mm from the bone crest. The anatomic interdental papillae were carefully de-epithelialized.

The online version of the original article can be found at <https://doi.org/10.1007/s00784-018-2537-4>

✉ Mariana A. Rojas
rojasmarianaandrea@gmail.com

- ¹ Section of Periodontology, Department of Oral and Maxillo-Facial Sciences, “Sapienza” University of Rome, Rome, Italy
- ² Clinic of Preventive Dentistry, Periodontology and Cariology, Center of Dental Medicine, University of Zurich, Zurich, Switzerland
- ³ Department of Periodontology, School of Dental Medicine, University of Bern, Bern, Switzerland

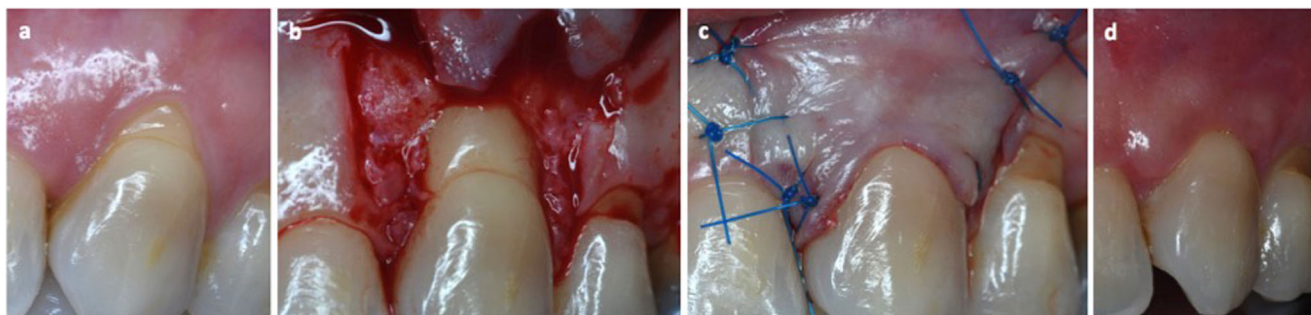


Fig. 2 Illustration of the surgical procedure of a representative case. Control group (CAF). **a** Baseline. Miller class I gingival recession on the maxillary right canine. **b** Flap elevation. **c** Final suture. **d** 18-month follow-up