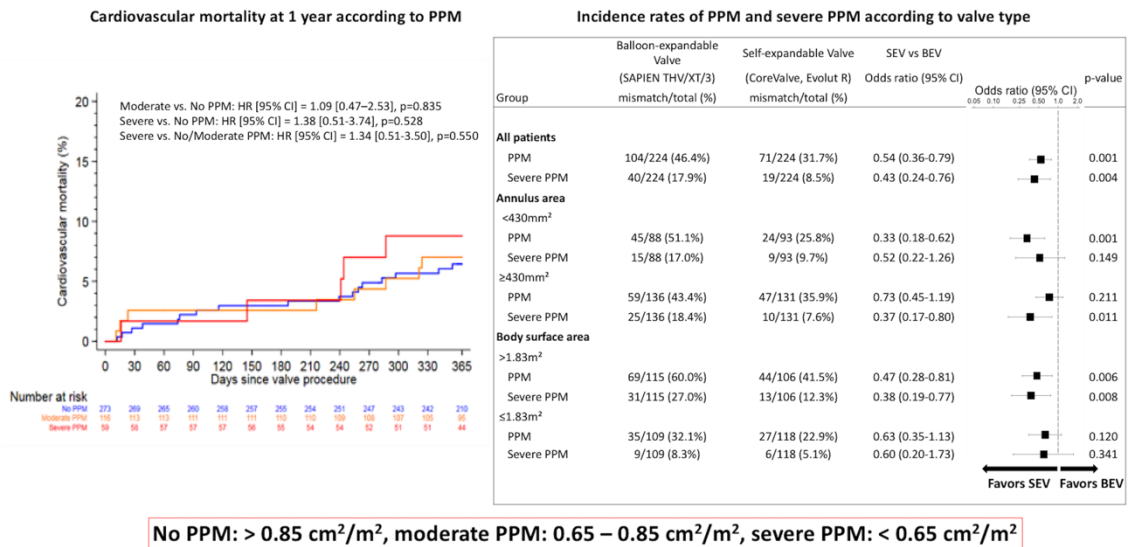


Supplementary Materials

Online Figure 1. Results from the different PPM criteria.

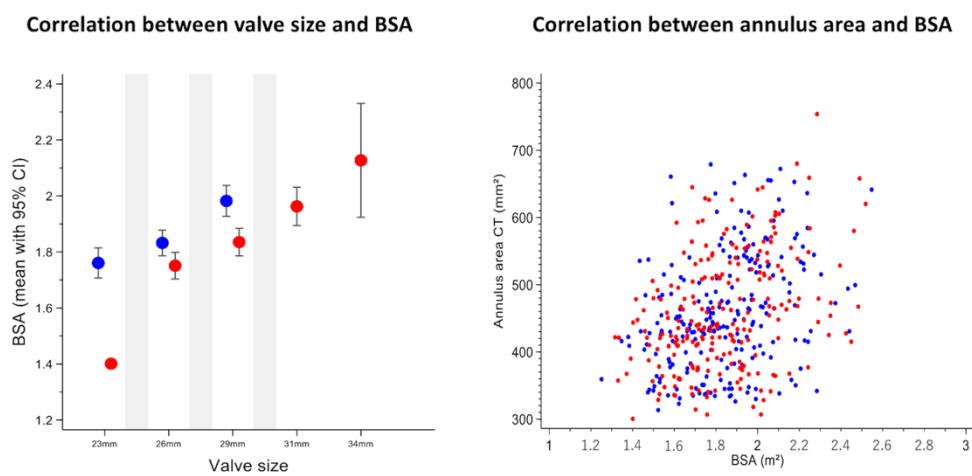
PPM was categorized based on discharge prosthetic EOA indexed to BSA as severe (<0.65 cm²/m²) or moderate (0.65 to 0.85 cm²/m²) without adjustment for BMI. The results were consistent with those from the PPM criteria according to the VARC-2 recommendations. The blue line indicates no PPM; the orange line indicates moderate PPM; the red line indicates severe PPM.



Online Figure 2. Correlations between A) valve size and BSA, and B) annulus area and BSA.

Valve size had a weak but positive correlation with BSA ($r=0.2768$, $p<0.001$).

Annulus area, which fundamentally determines valve size, had a weak but positive correlation with BSA ($r=0.356$, $p<0.001$). Red dots indicate patients treated with self-expandable valves. Blue dots indicate patients treated with balloon-expandable valves.



Online Figure 3a. Kaplan-Meier curves of cardiovascular death according to PPM

in patients without significant post-procedural AR (moderate or severe).

Blue line indicates no PPM; orange line indicates moderate PPM; red line

indicates severe PPM.

Online Figure 3b. Kaplan-Meier curves of cardiovascular death according to PPM

in patients without significant post-procedural MR (moderate or severe).

Blue line indicates no PPM; orange line indicates moderate PPM; red line

indicates severe PPM.

