

RESEARCH

Open Access



# Body composition, muscle function, and physical performance in fibrotic interstitial lung disease: a prospective cohort study

Sabina A. Guler<sup>1,2,3</sup>, Seo Am Hur<sup>2</sup>, Scott A. Lear<sup>1,4</sup>, Pat G. Camp<sup>2,5</sup> and Christopher J. Ryerson<sup>1,2,6\*</sup>

## Abstract

**Background:** Patients with fibrotic interstitial lung disease (ILD) are frequently physically inactive and many ILD subtypes are characterized by risk factors for myopathy; however, the importance of body composition, muscle strength, and physical performance in this population is largely unknown.

**Methods:** Patients were prospectively recruited from a specialized ILD clinic, baseline characteristics were collected from the clinical record, pulmonary function tests were performed per established protocols, and dyspnea was measured using the University of California San Diego Shortness of Breath Questionnaire. Dual-energy X-ray absorptiometry (DXA) was used to assess body composition; handgrip strength to determine muscle strength, and 4-m gait speed to measure physical performance.

**Results:** One hundred and fifteen patients with fibrotic ILD including 40 patients with idiopathic pulmonary fibrosis were recruited. The mean age was 69+/- 10 years in men (62% of the cohort), and 66+/- 9 years in women, with mild and moderate reduction in FVC and DLCO, respectively, for both sexes. ILD severity (measured by FVC %-predicted, DLCO %-predicted, or the Composite Physiologic Index in separate models) significantly predicted muscle mass and percent body fat including with adjustment for age, sex, and weight. ILD severity was associated with grip strength and gait speed independent from body composition.

**Conclusions:** ILD severity has an important impact on body composition, particularly in men. Future studies are needed to confirm and further explore the possibility of additional pathways through which ILD directly impacts limb muscle function and physical performance.

**Keywords:** Body composition, Exercise, physical, Lung diseases, Interstitial, Muscle strength, Respiratory function tests

## Introduction

Fibrotic interstitial lung diseases (ILDs) are progressive disorders that have high morbidity and early mortality [1, 2]. The morbidity of fibrotic ILD is primarily determined by disabling dyspnea and cough; however, extrapulmonary symptoms are also common (e.g., depression, anxiety, fatigue) [3]. Together, these pulmonary and extrapulmonary manifestations reduce physical activity [4, 5], which in turn leads to limb muscle disuse and deconditioning [6, 7]. The importance of limb muscle

dysfunction on quality of life, adverse health outcomes, and mortality is well recognized in the general aging population [8], and in patients with chronic obstructive pulmonary disease (COPD) [9], but there are limited data from patients with ILD.

Beyond the impact of muscle disuse and deconditioning, there are additional potential biological links between ILD and limb muscle dysfunction. For example, many ILD subtypes are characterized by systemic inflammation, oxidative stress, hypoxemia, impaired energy balance, malnutrition, and accelerated biological aging [10–12]. These are additional potential risk factors for myopathy and limb muscle dysfunction that have also not been adequately studied in fibrotic ILD [13–15].

\* Correspondence: [chris.ryerson@hli.ubc.ca](mailto:chris.ryerson@hli.ubc.ca)

<sup>1</sup>Department of Medicine, University of British Columbia, Vancouver, Canada

<sup>2</sup>Centre for Heart Lung Innovation, University of British Columbia, Vancouver, Canada

Full list of author information is available at the end of the article



The overarching objective of this study was therefore to explore the importance of body composition, muscle strength, and physical performance in patients with fibrotic ILD. We hypothesized that ILD severity impacts body composition independent of baseline demographics, and that ILD severity has a direct effect on limb muscle function that is independent of muscle mass and body fat.

## Methods

### Study population

Consecutive adult patients with idiopathic pulmonary fibrosis (IPF), idiopathic nonspecific interstitial pneumonia (NSIP), chronic hypersensitivity pneumonitis (HP), and unclassifiable ILD were prospectively invited to participate from a specialized ILD clinic between January 2016 and December 2017. Diagnoses were made using established criteria where available or based on a multidisciplinary discussion for ILDs without diagnostic criteria [16, 17]. Patients with ILD secondary to a systemic disease (e.g., connective tissue disease [CTD], sarcoidosis) and patients with significant, active and/or uncontrolled cardiovascular, musculoskeletal, metabolic, malignant, or neurological disease that limited function or independence were excluded.

### Measurement of body composition, muscle function, and physical performance

Dual-energy X-ray absorptiometry (DXA) was used to assess body composition. This standard technique allows precise, accurate, and reproducible differentiation between body fat mass, lean mass, and bone mineral content, with the possibility of obtaining regional measures (e.g., upper or lower limb muscle mass) [18]. All DXA scans were performed with a Hologic Discovery QDR 4500 (Hologic Inc., Bedford, MA). As recommended by the European Working Group on Sarcopenia in Older People [19], skeletal muscle index (SMI) was calculated as the sum of the muscle mass of the upper and lower limbs adjusted for height ( $m^2$ ). Percent body fat was calculated as total fat mass divided by total body mass.

Limb muscle function was assessed by handgrip strength [19], measured to the nearest kilogram using a Baseline® HiRes™ hydraulic hand dynamometer. Patients were seated with elbows flexed to 90 degrees and forearms in neutral position, thumb facing upwards. Patients were instructed to squeeze the dynamometer as hard as possible alternating three times for each hand, with the best measurement used for all analyses. Age-matched reference values are available for the Canadian population [20].

Physical performance was assessed with 4-m gait speed (4MGS) [19], in which patients were instructed to walk at their usual pace along a 4-m course as when walking

down a street. Canes and other walking aids were allowed. The walk test was performed three times with the fastest time used for all analyses. 4MGS has recently been demonstrated as reliable, valid, and responsive to change in patients with IPF [21].

### Additional measurements

Demographics, baseline characteristics, and data on prednisone use were collected from the clinical record, with all measurements performed within 3 months of recruitment. Pulmonary function tests were completed using established protocols [22, 23]. Disease severity was assessed using pulmonary physiology, including forced vital capacity (FVC), diffusion capacity of the lung for carbon monoxide (DLCO), and the Composite Physiologic Index (CPI), which was developed to predict radiological severity of fibrosis by aggregating FVC, forced expiratory volume in 1 s, and DLCO [24]. Dyspnoea was measured using the University of California San Diego Shortness of Breath Questionnaire (UCSD SOBQ), for which patients rate their dyspnea severity during 21 common activities and indicate how much dyspnea limits 3 aspects of their daily life, with each question measured on a 0–5 scale (total range 0–120) [25].

### Statistical analysis

Data are reported as mean (standard deviation) or median (interquartile range). Variables were examined for normality with histograms. Transformation of variables was not performed given the approximately normal distribution of all variables included in multivariable linear models. Between-group differences were analysed by chi<sup>2</sup>-test/Fisher's exact test for categorical variables and by two-sample t-test/Wilcoxon rank-sum test for continuous variables. Unadjusted associations between continuous variables were determined by Pearson's/Spearman's correlation test. Multivariable linear regression models were fitted to examine the independent association of ILD severity with body composition, limb muscle function, and physical performance. The coefficient of determination ( $R^2$ ) was used to assess the percent of variance in body composition, limb muscle function, and physical performance that was explained by the linear model. Model fit was compared by the Akaike Information Criterion (AIC). A two-sided  $p < 0.05$  was used to indicate statistical significance for all comparisons. Data were analyzed using R version 3.5.1 (R Foundation for Statistical Computing, Vienna, Austria) [26].

## Results

### Patient characteristics

Of the 164 consecutive patients approached, 49 declined participation and 71 men and 44 women consented to participate, with a final study cohort of 115 patients. The

most frequent diagnosis was IPF (34 men and 6 women), followed by unclassifiable ILD (21 men and 16 women) and chronic HP (10 men and 16 women), representing 35, 32, and 23% of the cohort, respectively, after excluding patients with CTD-ILD and other multisystem disorders. The remaining 6 men and 6 women had cryptogenic organizing pneumonia (5), drug-induced ILD (3), vasculitis (2), idiopathic NSIP (1), and idiopathic lymphocytic interstitial pneumonia (1). On average, women were younger and had smoked less than men, with both sexes having mild reduction in FVC and moderately reduced DLCO on average (Table 1). Patients with IPF were older and had more severely impaired DLCO compared to patients with non-IPF ILD (mean [SD] age 70 [7.7] versus 66 [10] years and mean [SD] DLCO 46 [13] versus 53 [17] %-predicted, respectively). IPF and non-IPF patients had no differences in their body composition, limb muscle function, and physical performance; all ILDs were therefore pooled for all analyses.

#### Body composition, limb muscle function, and physical performance

Men had higher SMI (7.9 kg/m<sup>2</sup> versus 6.2 kg/m<sup>2</sup>), higher muscle mass (total, upper limb, lower limb, and trunk), higher bone mineral content, and stronger grip compared to women ( $p < 0.001$  for all comparisons). Women had higher absolute and relative body fat than men (30 kg/40% versus 25 kg/29%;  $p \leq 0.006$  for both comparisons). Gait

speed did not differ significantly between men and women (1.33 m/s versus 1.25 m/s; Table 2).

Figure 1 shows the correlation among measures of body composition, limb muscle function, and physical performance in men and women. SMI was correlated with age ( $r = -0.40$ ,  $p < 0.001$ ) and weight ( $r = 0.69$ ,  $p < 0.001$ ) in men and with weight ( $r = 0.71$ ,  $p < 0.001$ ) in women. Percent body fat correlated with age ( $r = 0.24$ ,  $p = 0.04$ ) and weight ( $r = 0.63$ ,  $p < 0.001$ ) in men and with weight ( $r = 0.63$ ,  $p < 0.001$ ) in women. Grip strength correlated with age ( $r = -0.39$ ,  $p < 0.001$ ) and weight ( $r = 0.46$ ,  $p < 0.001$ ) in men and with age ( $r = -0.30$ ,  $p = 0.047$ ) and weight ( $r = 0.33$ ,  $p = 0.03$ ) in women. Gait speed was not associated with any baseline demographic or anthropometric measurement in men or women. Smoking history (smoked pack-years) and current or previous use of prednisone were not associated with SMI, percent body fat, grip strength, or gait speed, and these variables were therefore not considered in multivariable models.

#### Association of ILD severity with body composition

Several measures of ILD severity were associated with body composition and particularly muscle mass. On unadjusted analysis, SMI was correlated with DLCO %-predicted and CPI in men but was not associated with any measure of ILD severity in women (Table 3, Fig. 2a). Greater ILD severity remained a significant predictor of lower SMI in the full cohort with adjustment for age, sex, and weight, regardless of whether ILD severity was

**Table 1** Baseline characteristics

	Men, $n = 71$	Women, $n = 44$
Demographics		
Age, years	69 (10)	66 (9)
Height, cm	169 (9)	170 (8)
Weight, kg	79 (15)	82 (16)
Body mass index, kg/m <sup>2</sup>	28 (4)	28 (6)
Ever smoker	48 (68%)	25 (57%)
Smoked pack-years	23 (14–37)	10 (4–17)
ILD severity		
FVC, %-predicted	77 (17)	72 (22)
DLCO, %-predicted	52 (16)	49 (17)
Dyspnea (UCSD SOBQ)	34 (22–54)	41 (23–58)
Composite Physiologic Index	45 (36–54)	48 (36–58)
Prednisone use		
Current	7 (10%)	9 (21%)
Ever	12 (17%)	17 (39%)
Dose > 10 mg daily	3 (4%)	1 (2%)

Data shown are mean (standard deviation), median (interquartile range), or number (percent)

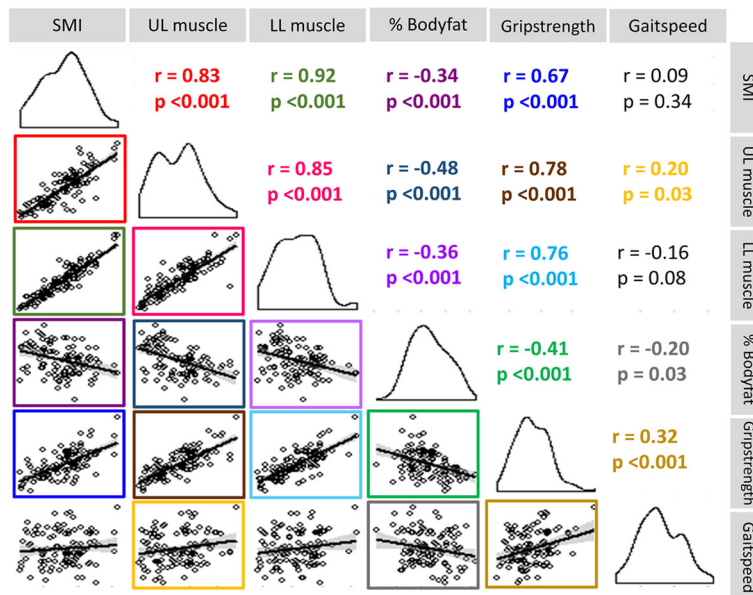
Abbreviations: DLCO diffusion capacity of the lung for carbon monoxide, FVC forced vital capacity, ILD interstitial lung disease, UCSD SOBQ University of California San Diego Shortness of Breath Questionnaire

**Table 2** Body composition, limb muscle function and physical performance

	Men, $n = 71$	Women, $n = 44$	$p$ -value*
	Mean (SD)	Mean (SD)	
Body composition			
SMI, kg/m <sup>2</sup>	7.9 (0.9)	6.2 (1.0)	< 0.0001
ALM, kg	24.0 (3.7)	16.2 (2.6)	< 0.0001
Upper limb, kg	6.2 (1.2)	3.6 (6.5)	< 0.0001
Lower limb, kg	17.8 (2.7)	12.6 (2.2)	< 0.0001
Trunk, kg	32.6 (5.0)	25.2 (4.1)	< 0.0001
Body fat, kg	25.1 (7.8)	29.7 (9.1)	0.006
Body fat, %	29.1 (5.2)	39.8 (6.5)	< 0.0001
Total BMC, kg	2.8 (0.6)	2.1 (0.4)	< 0.0001
Limb muscle function			
Dominant hand, kg	40.2 (9.6)	25.6 (5.7)	< 0.0001
Non-dominant hand, kg	37.5 (9.3)	24.2 (6.4)	< 0.0001
Physical performance			
4-m gait speed, m/s	1.33 (0.3)	1.25 (0.3)	0.16

Abbreviations: ALM appendicular lean mass, BMC bone mineral content, SMI skeletal muscle index

\*Two sample t-test



**Fig. 1** Pairwise correlation of body composition, limb muscle function, and physical performance. Abbreviations: SMI, skeletal muscle index (kg/m<sup>2</sup>), UL muscle, upper limb muscle mass (kg); LL muscle, lower limb muscle mass (kg); % Bodyfat, percent of fat mass/total body mass (%), Grip strength, handgrip strength (kg); Gait speed, 4-m gait speed (m/s); r, Pearson's correlation coefficient

represented by FVC %-predicted, DLCO %-predicted, or the CPI. The multivariable models explained 75–76% of the variability in SMI (Table 3). On unadjusted analysis, percent body fat correlated with FVC %-predicted and dyspnea in men and with FVC %-predicted in women (Table 3, Fig. 2b). Lower FVC %-predicted was the only ILD severity measure that was independently associated with higher percent body fat with adjustment for age, sex, and weight on adjusted analysis (Table 3).

**Association of ILD severity with limb muscle function and physical performance**

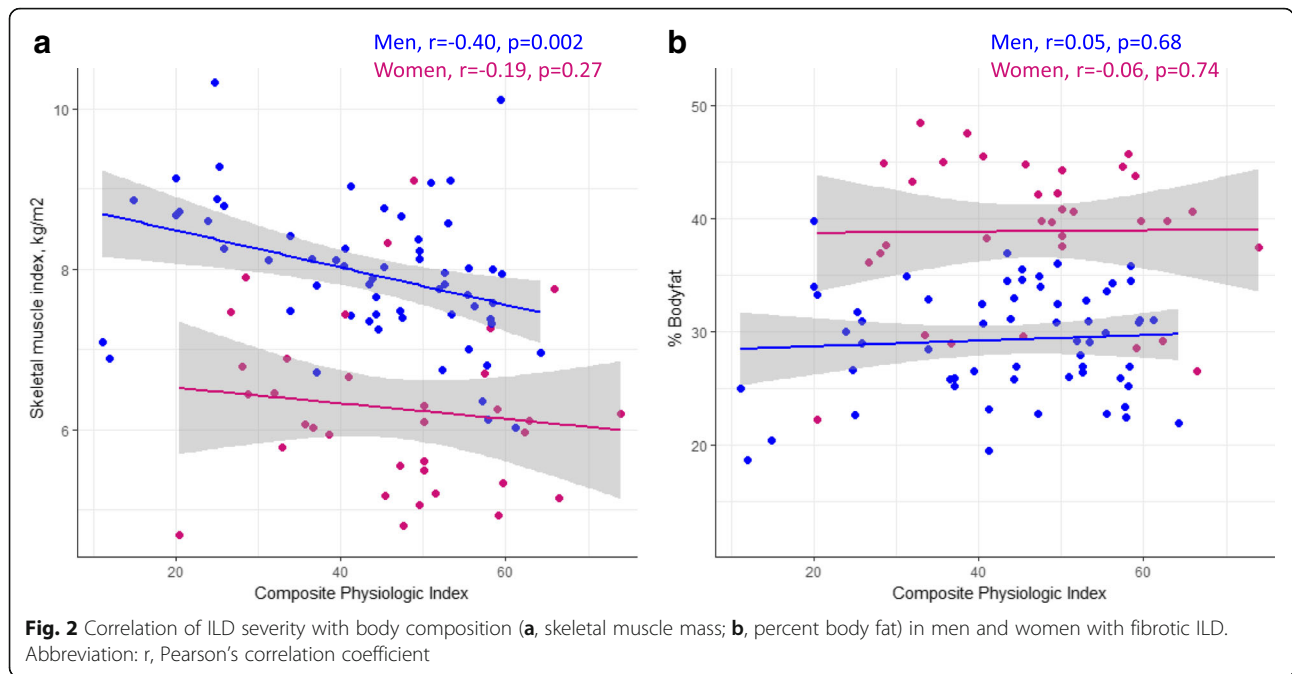
Measures of ILD severity were associated with grip strength and gait speed independent of body composition. On unadjusted analysis, grip strength correlated with CPI in men, but was not associated with any measure of ILD severity in women (Table 4, Fig. 3a). DLCO %-predicted, CPI, and dyspnea were independent predictors of grip strength in separate models that each

**Table 3** Unadjusted and adjusted correlation of ILD severity with body composition

	Unadjusted analysis				Adjusted for sex, age, weight		
	Men		Women		Coefficient (95% CI)	p-value	R <sup>2</sup>
	r	p-value	r	p-value			
SMI, kg/m <sup>2</sup>							
FVC, %-predicted	0.22	0.07	-0.06	0.71	0.012 (0.005 to 0.018)	0.0006	0.75
DLCO, %-predicted	0.39	0.002	0.15	0.40	0.013 (0.006 to 0.021)	0.0009	0.76
CPI	-0.40	0.002	-0.19	0.27	-0.016 (-0.026 to -0.007)	0.0001	0.76
Dyspnea (UCSD SOBQ)	-0.08	0.57	0.29	0.09	-0.004 (-0.010 to 0.002)	0.19	0.74
Body fat, %							
FVC, %-predicted	-0.37	0.002	-0.30	0.04	-0.063 (-0.105 to -0.020)	0.004	0.70
DLCO, %-predicted	0.03	0.79	0.12	0.51	0.001 (-0.050 to 0.052)	0.96	0.68
CPI	0.05	0.68	-0.06	0.74	0.025 (-0.036 to 0.087)	0.42	0.69
Dyspnea (UCSD SOBQ)	0.41	0.003	0.28	0.09	0.021 (-0.017 to 0.060)	0.28	0.70

Coefficients are reported per one-unit change for the predictor variables. A positive coefficient indicates an increase in the outcome variable per unit of the predictor variable (e.g., SMI increases by an average of 0.012 kg/m<sup>2</sup> for every 1% increase of FVC %-predicted)

Abbreviations: CI confidence interval, CPI Composite Physiologic Index, C diffusion capacity of the lung for carbon monoxide, FVC forced vital capacity, r Pearson's correlation coefficient, R<sup>2</sup> coefficient of determination (variability in the outcome explained by the model), SMI skeletal muscle index, UCSD SOBQ University of California San Diego Shortness of Breath Questionnaire



adjusted for age, sex, weight, and body composition. On unadjusted analysis, gait speed correlated with FVC %-predicted, DLCO %-predicted, CPI, and dyspnea in men and with dyspnea in women (Table 4, Fig. 3b). Gait speed was correlated with all measures of ILD severity with adjustment for baseline confounders and body composition. The models explained a greater percentage of the variability in grip strength ( $R^2$  0.65–0.68) than in gait speed ( $R^2$  0.07–0.16; Table 4).

**Discussion**

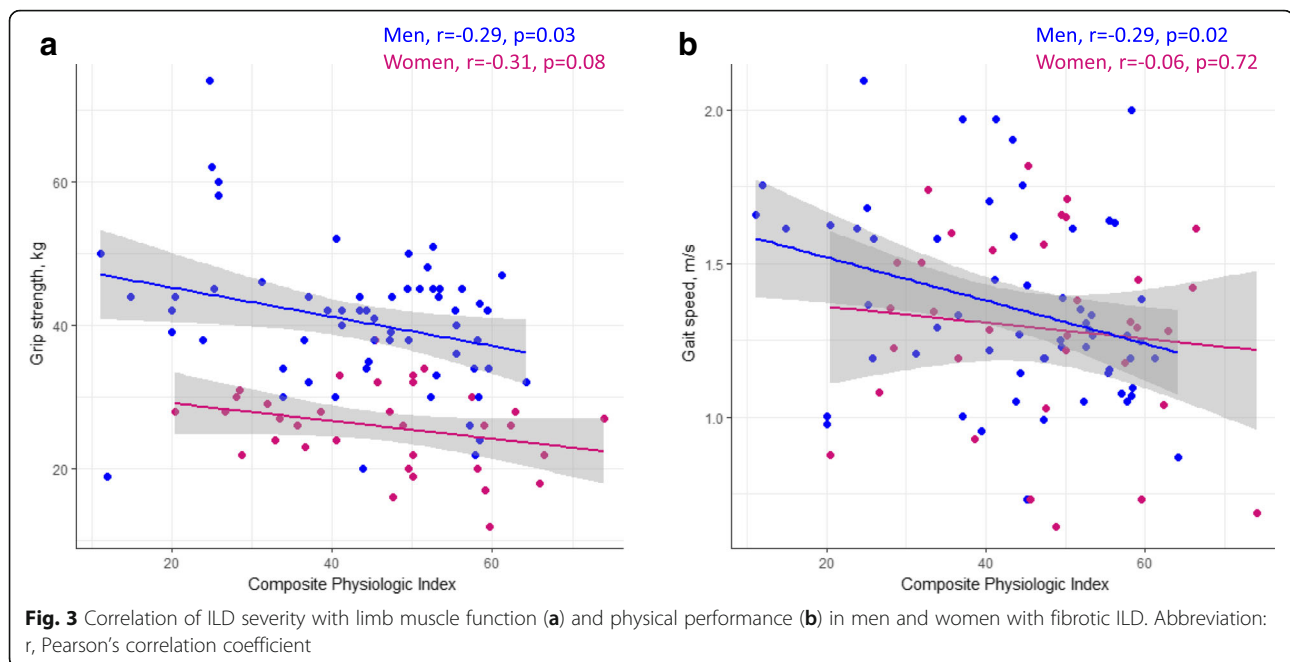
In this prospective cohort study, we show that ILD severity is strongly associated with body composition in both men and women, with significantly lower muscle mass and higher fat mass in individuals with more impaired pulmonary function. We also show that ILD severity is associated with upper limb muscle dysfunction and worse physical performance independent of muscle mass or body fat percentage. The independent

**Table 4** Unadjusted and adjusted correlation of ILD severity with physical performance

	Unadjusted analysis				Adjusted for sex, age, weight, SMI, % body fat		
	Men		Women		Coefficient (95% CI)	p-value	R <sup>2</sup>
	r	p-value	r	p-value			
<b>Grip strength, kg</b>							
FVC, %-predicted	0.17	0.16	-0.13	0.41	0.050 (-0.022 to 0.122)	0.17	0.65
DLCO, %-predicted	0.16	0.21	0.22	0.20	0.115 (0.026 to 0.204)	0.01	0.67
CPI	-0.29	0.03	-0.31	0.08	-0.140 (-0.247 to -0.034)	0.01	0.66
Dyspnea (UCSD SOBQ)	-0.08	0.58	-0.07	0.71	-0.066 (-0.122 to -0.010)	0.02	0.68
<b>Gait speed, m/s</b>							
FVC, %-predicted	0.35	0.003	0.16	0.30	0.004 (0.001 to 0.007)	0.01	0.10
DLCO, %-predicted	0.25	0.049	0.06	0.71	0.004 (0.0005 to 0.008)	0.03	0.07
CPI	-0.29	0.02	-0.06	0.72	-0.006 (-0.011 to -0.002)	0.009	0.08
Dyspnea (UCSD SOBQ)	-0.28	0.04	-0.49	0.003	-0.005 (-0.007 to -0.002)	0.0003	0.16

Coefficients are reported per one-unit change for the predictor variables. A positive coefficient indicates an increase in the outcome variable per unit of the predictor variable (e.g., grip strength increases by an average of 0.115 kg for every 1% increase of DLCO %-predicted)

Abbreviations: CI confidence interval, CPI composite physiologic index, DLCO diffusion capacity of the lung for carbon monoxide, FVC forced vital capacity, r Pearson's correlation coefficient, R<sup>2</sup> coefficient of determination (variability in the outcome explained by the model), SMI skeletal muscle index, UCSD SOBQ University of California San Diego Shortness of Breath Questionnaire



association of ILD severity with physical performance indicates that ILD severity has an important impact on measures of physical deconditioning in fibrotic ILD and suggests the possibility of additional pathways through which ILD directly impacts limb muscle function and physical performance. This novel finding was observed using multiple measures of ILD severity, was independent of baseline characteristics, and was not explained by the use of prednisone.

Our ILD patients had lower muscle mass and body fat percentage compared to previously published community dwelling older adults [27]. Men with fibrotic ILD also had substantially weaker grip strength compared to an age-matched healthy Canadian population, although grip strength was not lower than expected in women with fibrotic ILD [20]. These findings highlight the need for additional study of muscle mass and function in patients with fibrotic ILD. In contrast, 4MGS in our cohort was similar to the general population and markedly faster than a recently reported IPF population in the UK [21, 28]. The 4MGS is a simple, reliable, and responsive measurement for assessing global physical performance and functionality in COPD [29]; however, it was only weakly correlated with body composition in our cohort and only 10% of the variability in 4MGS was explained by ILD severity, age, sex, height, and body composition. This reflects an important contribution of unmeasured factors to 4MGS, and potentially poor construct validity of this test in our cohort.

There are two primary mechanisms by which ILD may lead to changes in muscle mass and function. First, ILD frequently leads to inactivity, muscle disuse, and

deconditioning as patients attempt to avoid the uncomfortable symptom of exertional dyspnea. Second, patients with ILD frequently have risk factors for myopathy including alterations in sex and growth hormones. The impact of sex and growth hormones on muscle mass and function is well established in the general population [30, 31], and studies in COPD suggest a role of testosterone, other anabolic steroids, and myostatin in the development of age- and disease-related muscle wasting [32–34]. Similarly, patients with IPF have lower levels of the steroid hormone dehydroepiandrosterone (DHEA) [35], potentially explaining the more consistent and stronger association of ILD severity with unfavourable body composition and low physical function in men compared to women. Furthermore, DHEA has antifibrotic effects on in vitro human fibroblasts [35], indicating the need for future studies to explore the links between hormones, limb muscles, and disease progression in patients with fibrotic ILD.

Weight loss is a strong negative prognostic factor in patients with COPD [36, 37]; however, the prognostic importance of low body mass in patients with fibrotic ILD is more controversial [10, 38, 39]. Recent studies showed that erector spinae cross-sectional-muscle-area and fat free mass might be prognostically important for patients with IPF [39, 40], but neither body mass index nor body composition correlated with measures of disease severity [39]. Our novel detection of the correlation of ILD severity with body composition might be due to our larger sample size and our use of DXA to measure body composition, which is more precise at an individual patient level than bioelectrical impedance analysis that

was used in the previous study [39, 41]. The prognostic significance of handgrip strength and 4MGS [21] in fibrotic ILD still needs to be determined. Studies in COPD suggest that body composition [42], muscle strength and physical performance [42–44] might be predictors of morbidity and mortality in respiratory diseases, emphasizing the potential importance of specifically targeting loss of muscle mass and limb muscle dysfunction in patients with fibrotic ILD.

Our findings have potential implications for the design of exercise training programs for patients with ILD, which can improve physical performance and reduce muscle fatigue [21, 45]. The lower muscle mass in our cohort compared to community dwelling older adults and its association with ILD severity suggest that individualized exercise programs for these patients should employ physical training strategies aimed to prevent and treat loss of muscle mass, which may further improve muscle performance. For example, sequential high intensity training of fewer muscle groups and neuromuscular stimulation may provide a sufficiently intense stimulus that can lead to muscle adaptation prior to the onset of limiting dyspnea in patients with severe ILD [46, 47]. Non-exercise strategies to prevent and treat limb muscle dysfunction have been evaluated in COPD [48], including nutritional support, oxygen therapy, and management of comorbidities. Such strategies should similarly be evaluated in the management of body composition and physical performance in patients with fibrotic ILD.

This cross-sectional study design allows only speculation about causality of the associations between ILD severity, body composition, limb muscle function, and physical performance. It is plausible that more advanced ILD leads to muscle disuse and myopathy, but common unidentified mechanisms causing myopathy and lung fibrosis can't be excluded. Similarly, this cohort study is not able to clarify the biological mechanisms of abnormal body composition and physical performance in patients with fibrotic ILD. Finally, instead of having a direct control group, we compared body composition and physical performance measures to previously reported general populations and COPD cohorts.

## Conclusions

Maintaining independence in the growing elderly ILD population will become increasingly important in the future, particularly considering advances in ILD pharmacotherapy that might prolong survival. The development of management strategies counteracting the detrimental loss of muscle mass and function in patients with fibrotic ILD requires a deeper understanding of their physiologic basis. In this study we demonstrate

a significant impact of ILD severity and dyspnea on body composition, muscle strength, and physical performance. Future studies in patients with fibrotic ILD are needed to investigate the impact of reduced muscle mass and physical function on long-term clinical outcomes, to identify potential management strategies, and to explore the underlying biological basis for these sex-dependent associations.

## Abbreviations

4MGS: 4-m gait speed; ALM: Appendicular lean mass; BMC: Bone mineral content; CI: Confidence interval; COPD: Chronic obstructive pulmonary disease; CPI: Composite Physiologic Index; CTD: Connective tissue disease; DLCO: Diffusion capacity of the lung for carbon monoxide; DXA: Dual-energy X-ray absorptiometry; FVC: Forced vital capacity; HP: Hypersensitivity pneumonitis; ILD: Interstitial lung disease; IPF: Idiopathic pulmonary fibrosis; NSIP: Nonspecific interstitial pneumonia; SMI: Skeletal muscle index; UCSD SOBQ: University of California San Diego Shortness of Breath Questionnaire

## Acknowledgments

The authors would like to acknowledge the patients of the St. Paul's Hospital ILD Clinic who allow us to conduct this research in an effort to improve the lives of patients with ILD.

## Funding

This work was supported by the British Columbia Lung Association and the Canadian Pulmonary Fibrosis Foundation.

## Availability of data and materials

The datasets used and analysed during the current study are available from the corresponding author on reasonable request.

## Authors' contributions

CJR takes responsibility for the content of the manuscript, including the data and analysis and is guarantor of this paper. SAG and CJR contributed to the conception and design of the study, and acquisition, analysis, and interpretation of the data. SAH, SAL, and PGC contributed to the acquisition of the data. All authors revised the manuscript for important intellectual content and provided final approval of the version to be published.

## Ethics approval and consent to participate

All participants provided written informed consent for participation in the current study (University of British Columbia ethics board approval H15-02350).

## Competing interests

The authors (SAG, SAH, SAL, PGC, and CJR) declare that they have no competing interests relevant to this work.

## Publisher's Note

Springer Nature remains neutral with regard to jurisdictional claims in published maps and institutional affiliations.

## Author details

<sup>1</sup>Department of Medicine, University of British Columbia, Vancouver, Canada. <sup>2</sup>Centre for Heart Lung Innovation, University of British Columbia, Vancouver, Canada. <sup>3</sup>Department of Pulmonary Medicine, University Hospital and University of Bern, Bern, Switzerland. <sup>4</sup>Faculty of Health Sciences, Simon Fraser University, Burnaby, Canada. <sup>5</sup>Department of Physical Therapy, University of British Columbia, Vancouver, Canada. <sup>6</sup>St. Paul's Hospital, 1081 Burrard St, Ward 8B, Vancouver, BC V6Z 1Y6, Canada.

Received: 31 October 2018 Accepted: 27 February 2019

Published online: 12 March 2019

## References

- Marshall DC, Salciccioli JD, Shea BS, Akuthota P. Trends in mortality from idiopathic pulmonary fibrosis in the European Union: an observational study of the WHO mortality database from 2001-2013. *Eur Respir J*. 2018;51(1).
- Navaratnam V, Fogarty AW, Glendening R, McKeever T, Hubbard RB. The increasing secondary care burden of idiopathic pulmonary fibrosis: hospital admission trends in England from 1998 to 2010. *Chest*. 143(4):1078-84.
- Glaspole IN, Watson AL, Allan H, Chapman S, Cooper WA, Corte TJ, Ellis S, Grainge C, Goh N, Hopkins P, Keir G, Macansh S, Mahar A, Moodley Y, Reynolds PN, Ryerson CJ, Walters EH, Zappala CJ, Holland AE. Determinants and outcomes of prolonged anxiety and depression in idiopathic pulmonary fibrosis. *Eur Respir J*. 2017;50(2).
- Root ED, Graney B, Baird S, Churney T, Fier K, Korn M, McCormic M, Sprunger D, Vierzba T, Wamboldt FS, Swigris JJ. Physical activity and activity space in patients with pulmonary fibrosis not prescribed supplemental oxygen. *BMC Pulm Med*. 2017;17(1):154.
- Nishiyama O, Yamazaki R, Sano H, Iwanaga T, Higashimoto Y, Kume H, Tohda Y. Physical activity in daily life in patients with idiopathic pulmonary fibrosis. *Respir Investig*. 2018;56(1):57-63.
- Jones SE, Maddocks M, Kon SS, Canavan JL, Nolan CM, Clark AL, Polkey MI, Man WD. Sarcopenia in COPD: prevalence, clinical correlates and response to pulmonary rehabilitation. *Thorax*. 2015;70(3):213-8.
- Morino A, Takahashi H, Chiba H, Ishiai S. Daily physical activity affects exercise capacity in patients with idiopathic pulmonary fibrosis. *J Phys Ther Sci*. 2017;29(8):1323-8.
- Leong DP, Teo KK, Rangarajan S, Lopez-Jaramillo P, Avezum A Jr, Orlandini A, Seron P, Ahmed SH, Rosengren A, Kelishadi R, Rahman O, Swaminathan S, Iqbal R, Gupta R, Lear SA, Oguz A, Yusuf K, Zatonska K, Chifamba J, Igumbor E, Mohan V, Anjana RM, Gu H, Li W, Yusuf S. Prognostic value of grip strength: findings from the prospective urban rural epidemiology (PURE) study. *Lancet*. 2015;386(9990):266-73.
- Burtin C, Ter Riet G, Puhon MA, Waschki B, Garcia-Aymerich J, Pinto-Plata V, Celli B, Watz H, Spruit MA. Handgrip weakness and mortality risk in COPD: a multicentre analysis. *Thorax*. 2016;71(1):86-7.
- Alakhras M, Decker PA, Nadrous HF, Collazo-Clavell M, Ryu JH. Body mass index and mortality in patients with idiopathic pulmonary fibrosis. *Chest*. 2007;131(5):1448-53.
- Rahman I, Skwarska E, Henry M, Davis M, O'Connor CM, FitzGerald MX, Greening A, MacNee W. Systemic and pulmonary oxidative stress in idiopathic pulmonary fibrosis. *Free Radic Biol Med*. 1999;27(1-2):60-8.
- Snetselaar R, van Moorsel CH, Kazemier KM, van der Vis JJ, Zanen P, van Oosterhout MF, Grutters JC. Telomere length in interstitial lung diseases. *Chest*. 2015;148(4):1011-8.
- Schaap LA, Pluijm SM, Deeg DJ, Visser M. Inflammatory markers and loss of muscle mass (sarcopenia) and strength. *Am J Med*. 2006;119(6):526e529-17.
- Hoppeler H, Kleinert E, Schlegel C, Claassen H, Howald H, Kayar SR, Cerretelli P. Morphological adaptations of human skeletal muscle to chronic hypoxia. *Int J Sports Med*. 1990;11(Suppl 1):S3-9.
- Meyer A, Salewsky B, Spira D, Steinhagen-Thiessen E, Norman K, Demuth I. Leukocyte telomere length is related to appendicular lean mass: cross-sectional data from the Berlin aging study II (BASE-II). *Am J Clin Nutr*. 2016; 103(1):178-83.
- Raghu G, Collard HR, Egan JJ, Martinez FJ, Behr J, Brown KK, Colby TV, Cordier JF, Flaherty KR, Lasky JA, Lynch DA, Ryu JH, Swigris JJ, Wells AU, Ancochea J, Bours D, Carvalho C, Costabel U, Ebina M, Hansell DM, Johkoh T, Kim DS, King TE, Jr., Kondoh Y, Myers J, Muller NL, Nicholson AG, Richeldi L, Selman M, Dudden RF, Griss BS, Protzko SL, Schunemann HJ: An official ATS/ERS/JRS/ALAT statement: idiopathic pulmonary fibrosis: evidence-based guidelines for diagnosis and management. *Am J Respir Crit Care Med* 2011, 183(6):788-824.
- Travis WD, Costabel U, Hansell DM, King TE, Jr., Lynch DA, Nicholson AG, Ryerson CJ, Ryu JH, Selman M, Wells AU, Behr J, Bours D, Brown KK, Colby TV, Collard HR, Cordeiro CR, Cottin V, Crestani B, Drent M, Dudden RF, Egan J, Flaherty K, Hogaboam C, Inoue Y, Johkoh T, Kim DS, Kitaichi M, Loyd J, Martinez FJ, Myers J, Protzko S, Raghu G, Richeldi L, Sverzellati N, Swigris J, Valeyre D, Pneumonias AEColl: An official American Thoracic Society/ European Respiratory Society statement: update of the international multidisciplinary classification of the idiopathic interstitial pneumonias. *Am J Respir Crit Care Med*, 188(6):733-748.
- Lukaski HC, Marchello MJ, Hall CB, Schafer DM, Siders WA. Soft tissue composition of pigs measured with dual x-ray absorptiometry: comparison with chemical analyses and effects of carcass thicknesses. *Nutrition*. 1999; 15(9):697-703.
- Cruz-Jentoft AJ, Baeyens JP, Bauer JM, Boirie Y, Cederholm T, Landi F, Martin FC, Michel JP, Rolland Y, Schneider SM, Topinkova E, Vandewoude M, Zamboni M. European working group on sarcopenia in older P: sarcopenia: European consensus on definition and diagnosis: report of the European working group on sarcopenia in older people. *Age Ageing*. 2010;39(4):412-23.
- Wong SL. Grip strength reference values for Canadians aged 6 to 79: Canadian health measures survey, 2007 to 2013. *Health Reports*. 2016;27(10):3-10.
- Nolan CM, Maddocks M, Maher TM, Canavan JL, Jones SE, Barker RE, Patel S, Jacob J, Cullinan P, Man WD. Phenotypic characteristics associated with slow gait speed in idiopathic pulmonary fibrosis. *Respirology*. 2017.
- Macintyre N, Crapo RO, Viegi G, Johnson DC, van der Grinten CP, Brusasco V, Burgos F, Casaburi R, Coates A, Enright P, Gustafsson P, Hankinson J, Jensen R, McKay R, Miller MR, Navajas D, Pedersen OF, Pellegrino R, Wanger J. Standardisation of the single-breath determination of carbon monoxide uptake in the lung. *Eur Respir J*. 2005;26(4):720-35.
- Miller MR, Hankinson J, Brusasco V, Burgos F, Casaburi R, Coates A, Crapo R, Enright P, van der Grinten CP, Gustafsson P, Jensen R, Johnson DC, Macintyre N, McKay R, Navajas D, Pedersen OF, Pellegrino R, Viegi G, Wanger J. Standardisation of spirometry. *Eur Respir J*. 2005;26(2):319-38.
- Wells AU, Desai SR, Rubens MB, Goh NS, Cramer D, Nicholson AG, Colby TV, du Bois RM, Hansell DM. Idiopathic pulmonary fibrosis: a composite physiologic index derived from disease extent observed by computed tomography. *Am J Respir Crit Care Med*. 2003;167(7):962-9.
- Eakin EG, Resnikoff PM, Prewitt LM, Ries AL, Kaplan RM. Validation of a new dyspnea measure: the UCSD shortness of breath questionnaire. University of California, San Diego. *Chest*. 1998;113(3):619-24.
- Team RC. R: a language and environment for statistical computing. Vienna: R Foundation for Statistical Computing; 2016.
- Kelly TL, Wilson KE, Heymsfield SB. Dual energy X-ray absorptiometry body composition reference values from NHANES. *PLoS One*. 2009;4(9):e7038.
- Newman AB, Kupelian V, Visser M, Simonsick E, Goodpaster B, Nevitt M, Kritchevsky SB, Tyllavsky FA, Rubin SM, Harris TB. Sarcopenia: alternative definitions and associations with lower extremity function. *J Am Geriatr Soc*. 2003;51(11):1602-9.
- Kon SS, Canavan JL, Nolan CM, Clark AL, Jones SE, Cullinan P, Polkey MI, Man WD. The 4-metre gait speed in COPD: responsiveness and minimal clinically important difference. *Eur Respir J*. 2014;43(5):1298-305.
- Guadalupe-Grau A, Carnicero JA, Losa-Reyna J, Tresguerres J, Gomez-Cabrera MD, Castillo C, Alfaro-Acha A, Rosado-Artalejo C, Rodriguez-Manas L, Garcia-Garcia FJ. Endocrinology of aging from a muscle function point of view: results from the Toledo study for healthy aging. *J Am Med Dir Assoc*. 2016.
- Valenti G, Denti L, Maggio M, Ceda G, Volpato S, Bandinelli S, Ceresini G, Cappola A, Guralnik JM, Ferrucci L. Effect of DHEAS on skeletal muscle over the life span: the InCHIANTI study. *J Gerontol A Biol Sci Med Sci*. 2004;59(5):466-72.
- Ju CR, Chen RC. Serum myostatin levels and skeletal muscle wasting in chronic obstructive pulmonary disease. *Respir Med*. 2012;106(1):102-8.
- Creutzberg EC, Wouters EF, Mostert R, Pluyms RJ, Schols AM. A role for anabolic steroids in the rehabilitation of patients with COPD? A double-blind, placebo-controlled, randomized trial. *Chest*. 2003;124(5):1733-42.
- Casaburi R, Bhasin S, Cosentino L, Porszasz J, Somfay A, Lewis MI, Fournier M, Storer TW. Effects of testosterone and resistance training in men with chronic obstructive pulmonary disease. *Am J Respir Crit Care Med*. 2004; 170(8):870-8.
- Mendoza-Milla C, Valero Jimenez A, Rangel C, Lozano A, Morales V, Becerril C, Chavira R, Ruiz V, Barrera L, Montano M, Pardo A, Selman M. Dehydroepiandrosterone has strong antifibrotic effects and is decreased in idiopathic pulmonary fibrosis. *Eur Respir J*. 2013;42(5):1309-21.
- Landbo C, Prescott E, Lange P, Vestbo J, Almdal TP. Prognostic value of nutritional status in chronic obstructive pulmonary disease. *Am J Respir Crit Care Med*. 1999;160(6):1856-61.
- Celli BR, Cote CG, Marin JM, Casanova C, Montes de Oca M, Mendez RA, Pinto Plata V, Cabral HJ. The body-mass index, airflow obstruction, dyspnea, and exercise capacity index in chronic obstructive pulmonary disease. *N Engl J Med*. 2004;350(10):1005-12.



38. Ley B, Ryerson CJ, Vittinghoff E, Ryu JH, Tomassetti S, Lee JS, Poletti V, Buccioli M, Elicker BM, Jones KD, King TE Jr, Collard HR. A multidimensional index and staging system for idiopathic pulmonary fibrosis. *Ann Intern Med.* 2012;156(10):684–91.
39. Nishiyama O, Yamazaki R, Sano H, Iwanaga T, Higashimoto Y, Kume H, Tohda Y. Fat-free mass index predicts survival in patients with idiopathic pulmonary fibrosis. *Respiology.* 2016.
40. Suzuki Y, Yoshimura K, Enomoto Y, Yasui H, Hozumi H, Karayama M, Furuhashi K, Enomoto N, Fujisawa T, Nakamura Y, Inui N, Suda T. Distinct profile and prognostic impact of body composition changes in idiopathic pulmonary fibrosis and idiopathic pleuroparenchymal fibroelastosis. *Sci Rep.* 2018;8(1):14074.
41. Buckinx F, Reginster JY, Dardenne N, Croisier JL, Kaux JF, Beaudart C, Slomian J, Bruyere O. Concordance between muscle mass assessed by bioelectrical impedance analysis and by dual energy X-ray absorptiometry: a cross-sectional study. *BMC Musculoskelet Disord.* 2015;16:60.
42. Schols AM, Broekhuizen R, Weling-Scheepers CA, Wouters EF. Body composition and mortality in chronic obstructive pulmonary disease. *Am J Clin Nutr.* 2005;82(1):53–9.
43. Puhan MA, Siebeling L, Zoller M, Muggensturm P, ter Riet G. Simple functional performance tests and mortality in COPD. *Eur Respir J.* 2013; 42(4):956–63.
44. Martinez CH, Diaz AA, Meldrum CA, McDonald MN, Murray S, Kinney GL, Hokanson JE, Curtis JL, Bowler RP, Han MK, Washko GR, Regan EA. Handgrip strength in chronic obstructive pulmonary disease. Associations with acute exacerbations and body composition. *Ann Am Thorac Soc.* 2017;14(11):1638–45.
45. Tonelli R, Coconcelli E, Lanini B, Romagnoli I, Florini F, Castaniere I, Andrisani D, Cerri S, Luppi F, Fantini R, Marchioni A, Beghe B, Gigliotti F, Clini EM. Effectiveness of pulmonary rehabilitation in patients with interstitial lung disease of different etiology: a multicenter prospective study. *BMC Pulm Med.* 2017;17(1):130.
46. Dolmage TE, Goldstein RS. Effects of one-legged exercise training of patients with COPD. *Chest.* 2008;133(2):370–6.
47. Maddocks M, Nolan CM, Man WD, Polkey MI, Hart N, Gao W, Rafferty GF, Moxham J, Higginson IJ. Neuromuscular electrical stimulation to improve exercise capacity in patients with severe COPD: a randomised double-blind, placebo-controlled trial. *Lancet Respir Med.* 2016;4(1):27–36.
48. Maltais F, Decramer M, Casaburi R, Barreiro E, Burelle Y, Debigare R, Dekhuijzen PN, Franssen F, Gayan-Ramirez G, Gea J, Gosker HR, Gosselink R, Hayot M, Hussain SN, Janssens W, Polkey MI, Roca J, Saey D, Schols AM, Spruit MA, Steiner M, Taivassalo T, Troosters T, Vogiatzis I, Wagner PD. An official American Thoracic Society/European Respiratory Society statement: update on limb muscle dysfunction in chronic obstructive pulmonary disease. *Am J Respir Crit Care Med.* 2014;189(9):e15–62.

**Ready to submit your research? Choose BMC and benefit from:**

- fast, convenient online submission
- thorough peer review by experienced researchers in your field
- rapid publication on acceptance
- support for research data, including large and complex data types
- gold Open Access which fosters wider collaboration and increased citations
- maximum visibility for your research: over 100M website views per year

**At BMC, research is always in progress.**

Learn more [biomedcentral.com/submissions](https://biomedcentral.com/submissions)

