

Oncologic long-term outcomes of emergency versus elective resection for colorectal cancer

**Joël L. Lavanchy, Lukas Vaisnora,
Tobias Haltmeier, Inti Zlobec, Lukas
E. Brügger, Daniel Candinas & Beat
Schnüriger**

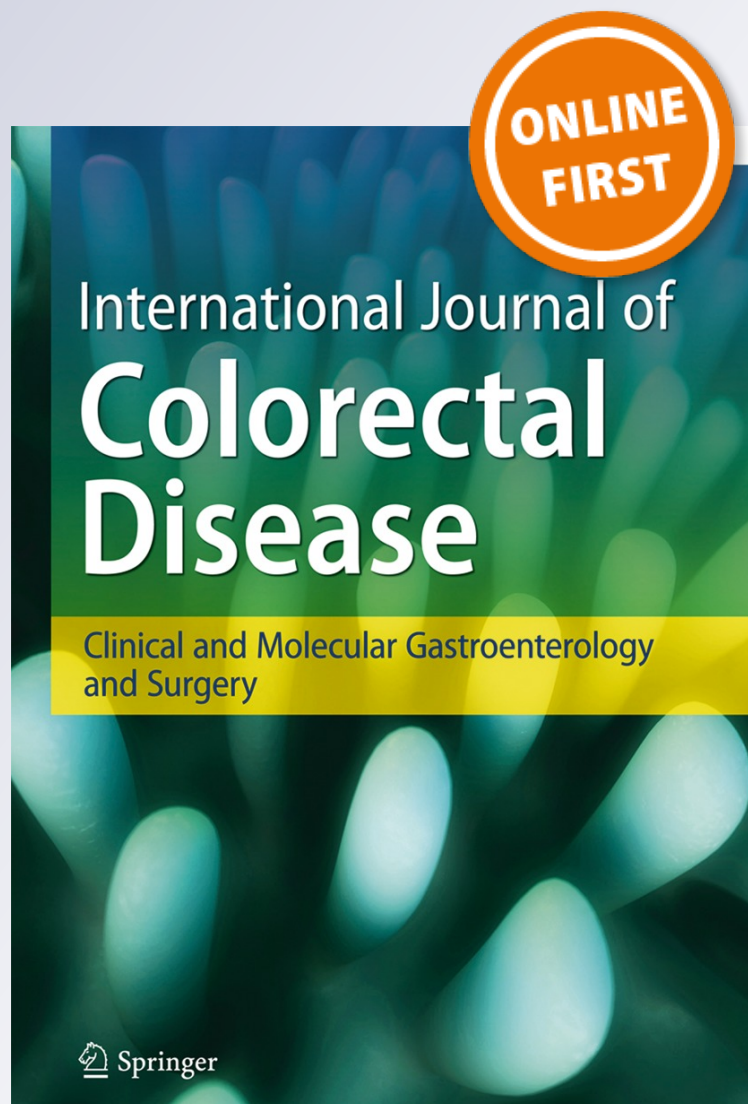
**International Journal of Colorectal
Disease**

Clinical and Molecular Gastroenterology
and Surgery

ISSN 0179-1958

Int J Colorectal Dis

DOI 10.1007/s00384-019-03426-8



 Springer

Your article is protected by copyright and all rights are held exclusively by Springer-Verlag GmbH Germany, part of Springer Nature. This e-offprint is for personal use only and shall not be self-archived in electronic repositories. If you wish to self-archive your article, please use the accepted manuscript version for posting on your own website. You may further deposit the accepted manuscript version in any repository, provided it is only made publicly available 12 months after official publication or later and provided acknowledgement is given to the original source of publication and a link is inserted to the published article on Springer's website. The link must be accompanied by the following text: "The final publication is available at link.springer.com".



Oncologic long-term outcomes of emergency versus elective resection for colorectal cancer

Joël L. Lavanchy¹ · Lukas Vaisnora¹ · Tobias Haltmeier¹ · Inti Zlobec² · Lukas E. Brügger¹ · Daniel Candinas¹ · Beat Schnüriger¹

Accepted: 10 October 2019

© Springer-Verlag GmbH Germany, part of Springer Nature 2019

Abstract

Purpose Long-term outcomes in patients undergoing emergency versus elective resection for colorectal cancer (CRC) are discussed controversially. This study aims to assess long-term outcomes of emergency versus elective CRC surgery.

Methods Single-center retrospective cohort study. Patients undergoing emergency or elective CRC surgery from July 2002 to January 2013 were included. Primary outcome was 5-year survival, secondary outcomes were in-hospital mortality and local tumor recurrence.

Results Overall, 475 patients were included. Median age was 69.0 (IQR 59.0–77.0) years. A total of 141 patients (30%) were operated for rectal cancer and 334 patients (70%) for colon cancer. Median follow-up was 445 (IQR 67–1409) days. Emergency resection was performed in 105 patients (22%) due to obstruction, perforation, or bleeding. Stage IV tumors and ASA scores ≥ 3 were significantly more frequent in the emergency than in the elective resection group (39.0% vs. 33.5%, $p < 0.001$; 75.5% vs. 61.3%, $p = 0.003$). The rate of patients with positive lymph nodes was similar in the two groups (46.2% vs. 46.3%, $p = 1.000$). In-hospital mortality was significantly higher in the emergency CRC versus the elective CRC group (8.4% vs. 3.0%, $p = 0.023$). Five-year survival (aHR 1.38; 95%CI 0.81–2.37, $p = 0.237$) or local tumor recurrence (aHR 1.48; 95%CI 0.47–4.66, $p = 0.500$) were not significantly different in patients undergoing emergency versus elective surgery for CRC.

Conclusion In-hospital mortality was increased in emergency versus elective CRC resections. However, 5-year survival and local recurrence after surgery for CRC were determined by the tumor stage, and not by the emergency versus elective setting of surgical resection.

Keywords Emergency colorectal cancer resection · Elective colorectal cancer resection · Colorectal cancer · Five-year survival · Recurrence-free survival

Introduction

Colorectal cancer (CRC) is the third most common cancer worldwide [1]. In 2015, CRC had an incidence of 1.7 million cases and accounted for 832,000 deaths worldwide [2]. Approximately, a quarter to a third of CRC patients undergoes

emergency CRC surgery due to obstruction, perforation, or bleeding ahead of termination of a neo-adjuvant chemo/radiotherapy or scheduled resection [3, 4].

As randomization in elective and emergency CRC surgery is not feasible, the literature is inherently non-randomized and therefore mainly retrospective. Some studies suggest that overall survival and disease-free survival after emergency CRC surgery are worse than after elective CRC surgery. However, these studies either have a relatively short follow-up [5, 6], small sample sizes [7, 8], or do not adjust outcomes for confounding factors [5, 7–10]. Therefore, further assessment of long-term outcomes after emergency versus elective CRC surgery is warranted.

Inconsistent preoperative diagnostics or cancer-related surgery in the emergency setting might be reasons for the suggested worse outcomes in patients undergoing emergency CRC surgery. Most commonly, differences in surgical

Presented at the European Congress for Trauma & Emergency Surgery, May 6–8, 2018 Valencia, Spain.

✉ Beat Schnüriger
beat.schnueriger@insel.ch

¹ Department of Visceral Surgery and Medicine, Inselspital, Bern University Hospital, University of Bern, Bern, Switzerland

² Institute of Pathology, University of Bern, Bern, Switzerland

technique between emergency general surgeons and highly specialized colorectal surgeons are discussed as contributing factors. Nevertheless, there is no consensus in the literature whether emergency CRC surgery negatively influences long-term, cancer-related outcomes [11–13].

Therefore, the aim of this study is to assess long-term outcomes after emergency versus elective CRC surgery in a setting of close collaboration of emergency general and colorectal surgeons.

Material and methods

Study design

This is a single-center retrospective observational study. Patients undergoing CRC surgery at the Bern University Hospital from July 2002 to January 2013 were included. Patient data was extracted from the institution's CRC database and electronic patient charts. The following variables were collected: age, sex, body mass index (BMI), American Society of Anesthesiologists (ASA) score [14], Charlson Comorbidity Index (CCI) [15], operative procedure, surgical technique (laparoscopic/open) and strategy (primary anastomosis/primary anastomosis with protective, diverting stoma/definitive stoma), tumor localization, postoperative histologic Union for International Cancer Control (UICC, ed. 2010) tumor stage, overall and positive lymph node yield, neo-adjuvant chemo- and radiotherapy, operation time, post-operative complications (cardiopulmonary, renal, gastrointestinal, surgical site infections), hospital length of stay (HLOS), in-hospital mortality, length of follow-up, overall survival 5-year survival, rate of local recurrence, and disease-free survival. In cases with missing variables, patients and/or responsible general practitioners were contacted by phone.

Patients undergoing emergency resection for CRC were compared to patients undergoing elective resection for CRC. Patients undergoing stoma formation without CRC resection or other palliative surgical techniques were not included into the study.

Short-term outcomes comprised postoperative complications and in-hospital mortality. Long-term outcomes were determined for those patients surviving the index hospitalization. A subgroup analysis for colon cancer (with the exclusion of patients with rectal cancer) was performed in order to reduce heterogeneity of patient populations.

Treatment strategy

All CRC patients were discussed at the Multidisciplinary CRC Board and treated based on the European Society of Medical Oncology (ESMO) guidelines [16]. This included neoadjuvant chemo/radiotherapy in advanced lower- and mid-rectal cancer and adjuvant chemotherapy in patients with advanced CRC. Oncologic resection included high-tie ligation of the feeding

colonic vessels in colon cancer or total mesorectal excision [17] in patients with rectal cancer. Surgeons specialized in colorectal procedures performed most of the elective CRC resections. Surgeons from various abdominal surgical subspecialties such as general surgeons, colorectal, pancreatic, hepatobiliary, or upper gastrointestinal surgeons performed emergency CRC resections.

Statistical analysis

The Shapiro-Wilk test was used assessing normality of distribution. Categorical variables were reported as numbers and percentages, continuous variables as medians and interquartile ranges (IQR). In univariable analysis, categorical variables were compared using Fisher's exact test and continuous variables were compared using Mann-Whitney U test. The effect of emergency CRC surgery on short- and long-term outcomes was adjusted in multivariable logistic and Cox regression analysis, respectively. Clinically relevant predictor variables with $p \leq 0.1$ in univariable analysis were included in the regression models. p values ≤ 0.05 were considered statistically significant.

Statistical analysis was performed using SPSS Statistics version 25 (IBM Corporation, Armonk, NY).

Ethical requirements

This study is reported in accordance with the STROBE (Strengthening the Reporting of Observational Studies in Epidemiology) statement [18] and was approved by the cantonal ethics committee of Bern, Switzerland (2017–00792).

Results

Baseline demographics and characteristics

During the 10.5-year study period, a total of 475 patients with CRC resections were included in the study. Median age was 69.0 (IQR 59.0–77.0) years, 62.3% were male and the median BMI was 25.5 (IQR 22.7–28.9) kg/m^2 . An ASA score ≥ 3 was found in 61.9% and the CCI ≥ 5 was found in 79.4% of patients. Patients were treated for colon cancer in 70.3% and for rectal cancer in 29.7%, respectively.

A total of 105 (22.1%) patients underwent emergency CRC resections due to obstruction (63.8%), perforation (17.1%), or bleeding (14.3%), respectively. Table 1 summarizes the baseline characteristics of the emergency versus elective CRC resection populations. Patients undergoing emergency CRC surgery were significantly older and presented with a lower BMI compared to the elective CRC surgery patients (72.0 vs. 68.0 years, $p = 0.018$; 24.3 vs. 25.9 kg/m^2 , $p = 0.012$). Moreover, in the emergency CRC surgery group, ASA scores ≥ 3 were significantly more frequent than in the elective CRC surgery group (75.5% vs. 61.3%, $p = 0.003$).

Table 1 Baseline characteristics

	Overall (n = 475)	Emergency (n = 105)	Elective (n = 370)	p value
Age, y, median (IQR)	69.0 (59.0–77.0)	72.0 (61.5–79.0)	68.0 (58.8–76.0)	0.018 ^a
Sex, f (%) / m (%)	179 (37.7) / 296 (62.3)	44 (41.9) / 61 (58.1)	135 (36.5) / 235 (63.5)	0.361 ^b
BMI, kg/m ² , median (IQR)	25.5 (22.7–28.9)	24.3 (21.8–27.4)	25.9 (22.9–29.1)	0.012 ^a
ASA score, n (%)				0.003 ^b
1	7 (1.5)	1 (1.0)	6 (1.7)	
2	156 (32.8)	23 (23.5)	133 (37.0)	
3	268 (56.4)	62 (63.3)	206 (57.4)	
4	26 (5.5)	12 (12.2)	14 (3.9)	
CCI ≥ 5, n (%)	377 (79.4)	87 (82.9)	290 (78.4)	0.342 ^a
Operative procedure, n (%)				< 0.001 ^b
LAR/TME	123 (25.9)	10 (9.5)	113 (30.5)	
APR	43 (9.1)	2 (1.9)	41 (11.1)	
Left hemicolectomy	146 (30.8)	52 (49.6)	94 (25.4)	
Transversectomy	8 (1.7)	2 (1.9)	6 (1.6)	
Right hemicolectomy	114 (24.0)	28 (26.7)	86 (23.2)	
Subtotal/colectomy	33 (6.9)	9 (8.6)	24 (6.5)	
Other	8 (1.7)	2 (1.9)	6 (1.6)	
Operative technique, n (%)				0.031 ^b
Successful laparoscopic	51 (10.7)	5 (4.8)	46 (12.4)	
Open	424 (89.3)	100 (95.2)	324 (87.6)	
Operative strategy, n (%)				0.003 ^b
Prim. anastomosis	247 (52.0)	43 (41.0)	204 (55.1)	
Prim. anastomosis, protective stoma	123 (25.9)	26 (24.8)	97 (26.2)	
No prim. Anastomosis, definitive stoma	105 (22.1)	36 (34.4)	69 (18.6)	
Operation time, min, median (IQR)	275 (210–355)	265 (197–320)	280 (214–360)	0.042 ^a

IQR, interquartile range; BMI, body mass index; ASA score, American Society of Anaesthesiologists score; CCI, Charlson comorbidity index; LAR/TME, low anterior resection/total mesorectal excision; APR, abdominoperineal resection

^a Mann-Whitney U test

^b Fisher's exact test

p values < 0.05

Median operative time was significantly shorter in the emergency CRC surgery group compared to the elective CRC surgery group (265 vs. 280 min, $p = 0.042$). The proportion of laparoscopic resections was significantly smaller in the emergency CRC surgery group compared to the elective CRC group (4.8% vs. 12.4%, $p = 0.031$). Stoma formation was significantly more frequent in the emergency CRC group compared to the elective group (59.2% vs. 44.8%, $p = 0.003$) (Table 1).

Tumor characteristics

Table 2 summarizes the tumor characteristics of emergency versus elective CRC patients. T4 carcinomas were significantly more frequent in the emergency compared to the elective

CRC group (42.9% vs. 16.5%, $p < 0.001$). Moreover, significantly more lymph nodes were harvested in the emergency CRC surgery group versus the elective CRC surgery group (26 [IQR 18–33] vs. 20 [15–27] lymph nodes, $p < 0.001$). Colon cancer (as compared to rectal cancer) was significantly more frequent in the emergency CRC group (90.5% vs. 64.6%, $p < 0.001$). Significantly, more patients from the elective CRC group received adjuvant chemotherapy compared to the emergency CRC group (32% vs. 19%, $p = 0.028$).

Short-term outcomes

Table 3 summarizes in-hospital outcomes of emergency versus elective CRC patients. The median HLOS was

Table 2 Tumor characteristics

	Overall (<i>n</i> = 475)	Emergency (<i>n</i> = 105)	Elective (<i>n</i> = 370)	<i>p</i> value
Localization distal to proximal, <i>n</i> (%)				< 0.001 ^a
Rectum	141 (29.7)	10 (9.5)	131 (35.4)	
Sigmoid	152 (32.0)	50 (47.6)	102 (27.6)	
Splenic flexure, descending c.	30 (6.3)	15 (14.3)	15 (4.1)	
Transverse c.	17 (3.6)	5 (4.8)	12 (3.2)	
Hepatic flexure, ascending c.	59 (12.4)	12 (11.4)	47 (12.7)	
Cecum	41 (8.6)	11 (10.5)	30 (8.1)	
Other	35 (7.4)	2 (1.9)	33 (8.9)	
Tumor stage (UICC), <i>n</i> (%)				< 0.001 ^a
0	15 (3.2)	2 (1.9)	13 (3.5)	
I	79 (16.6)	6 (5.7)	73 (19.7)	
IIA	92 (19.4)	23 (21.9)	69 (18.6)	
IIB	26 (5.5)	14 (13.3)	12 (3.2)	
IIIA	12 (2.5)	1 (1.0)	11 (3.0)	
IIIB	54 (11.4)	12 (11.4)	42 (11.4)	
IIIC	32 (6.7)	6 (5.7)	26 (7.0)	
IV	165 (34.7)	41 (39.0)	124 (33.5)	
Total lymph node yield, median (IQR)	21 (15–29)	26 (18–33)	20 (15–27)	< 0.001 ^b
Lymph node yield colon, median (IQR)	23 (16–32)	26 (18–37)	22 (16–30)	0.017 ^b
Lymph node yield rectum, median (IQR)	18 (14–25)	25 (17–33)	18 (13–25)	0.069 ^b
Positive lymph node yield, median (IQR)	3 (1–7)	3 (2–8)	3 (1–7)	0.296 ^b
Nodal positive (N+), <i>n</i> (%)	219 (46.3)	48 (46.2)	171 (46.3)	1.000 ^a
Positive resection margin (R+), <i>n</i> (%)	27 (5.1)	8 (7.6)	19 (5.1)	0.416 ^a
Lymphatic vessel invasion (L+), <i>n</i> (%)	77 (16.2)	18 (17.1)	59 (16.0)	0.954 ^a
Vein invasion (V+), <i>n</i> (%)	90 (19.0)	22 (21.0)	68 (18.4)	0.918 ^a
Neoadjuvant chemotherapy, <i>n</i> (%)	88 (18.5)	3 (2.9)	85 (23.0)	< 0.001 ^a
Neoadjuvant radiotherapy, <i>n</i> (%)	71 (14.9)	2 (1.9)	69 (18.6)	< 0.001 ^a

IQR: interquartile range; c.: Colon; UICC: Union internationale contre le cancer; ^a Fisher's exact test; ^b Mann Whitney U test

p values < 0.05

significantly longer in the emergency CRC surgery group compared to the elective CRC surgery group (14 [IQR 11–23] vs. 13 [9–19] days, *p* = 0.006). There was a trend towards more in-hospital complications in the emergency versus the elective CRC group. However, this difference did not reach statistical significance (67 complications in 62 [59.0%] emergency CRC patients vs. 201 complications in 187 [50.5%] elective CRC patients, *p* = 0.150).

In-hospital mortality was significantly higher in the emergency CRC versus the elective CRC group (8.4% vs. 3.0%, *p* = 0.023). However, when adjusting for the effect of ASA score, tumor localization, operative strategy, and neoadjuvant chemo- and radiotherapy in-hospital mortality was not significantly different in the

emergency versus the elective CRC group (OR 1.82, CI 95% 0.62–5.40, *p* = 0.278).

Long-term outcomes

Long-term outcomes are summarized in Table 3. Median length of follow-up was 445 (IQR 67–1409) days and was similar between the emergency and elective CRC groups. Neither overall survival nor median disease-free survival were significantly different between the emergency and the elective CRC groups (72.4% vs. 78.9%, *p* = 0.185; 383 vs. 423 days, *p* = 0.257) (Fig. 1). Multivariable Cox regression analysis confirmed comparable 5-year survival or local tumor recurrence when comparing emergency with elective CRC patients (Table 4).

Table 3 In-hospital and long-term outcomes

	Overall (<i>n</i> = 475)	Emergency (<i>n</i> = 105)	Elective (<i>n</i> = 370)	<i>p</i> value
In-hospital outcomes				
Patients with complications, <i>n</i> (%)	249 (52.4)	62 (59.0)	187 (50.5)	0.150 ^a
Cardiac event	15 (3.2)	5 (4.8)	10 (2.7)	0.340 ^a
Respiratory event	25 (5.3)	7 (6.7)	18 (4.9)	0.461 ^a
Aspiration	11 (2.3)	4 (3.8)	7 (1.9)	0.271 ^a
Renal insufficiency	18 (3.8)	5 (4.8)	13 (3.5)	0.565 ^a
Ileus	28 (5.9)	7 (6.7)	21 (5.7)	0.646 ^a
Anastomotic leakage	33 (6.9)	5 (4.8)	28 (7.6)	0.390 ^a
Sepsis	18 (3.8)	4 (3.8)	14 (3.8)	1.000 ^a
Surgical site infection	141 (29.7)	33 (31.4)	108 (29.2)	0.717 ^a
Superficial	91 (19.2)	21 (20.0)	70 (18.9)	
Deep	11 (2.3)	4 (3.8)	7 (1.9)	0.595 ^a
Organ/space	39 (8.2)	8 (7.6)	31 (8.3)	
Hospital length of stay, <i>d</i> , median (IQR)	13 (9–19)	14 (11–23)	13 (9–19)	0.006 ^b
In-hospital mortality, <i>n</i> (%)	20 (4.2)	9 (8.4)	11 (3.0)	0.023 ^a
Long-term outcomes				
Length of follow-up, <i>d</i> , median (IQR)	445 (67–1409)	420 (45–1289)	450 (82–1450)	0.387 ^b
Adjuvant chemotherapy, <i>n</i> (%)	137 (28.8)	20 (19.0)	117 (31.6)	0.028 ^a
Overall survival, <i>n</i> (%)	368 (77.5)	76 (72.4)	292 (78.9)	0.185 ^a
5-y survival, <i>n</i> (%)	485 (81.1)	79 (75.2)	306 (82.7)	0.091 ^a
Local recurrence, <i>n</i> (%)	24 (5.1)	7 (6.7)	17 (4.6)	0.448 ^a
Disease-free survival, <i>d</i> , median (IQR)	411 (62–1374)	383 (43–1209)	423 (78–1428)	0.257 ^b

IQR: interquartile range

^a Fisher's exact test^b Mann-Whitney U test*p* values < 0.05

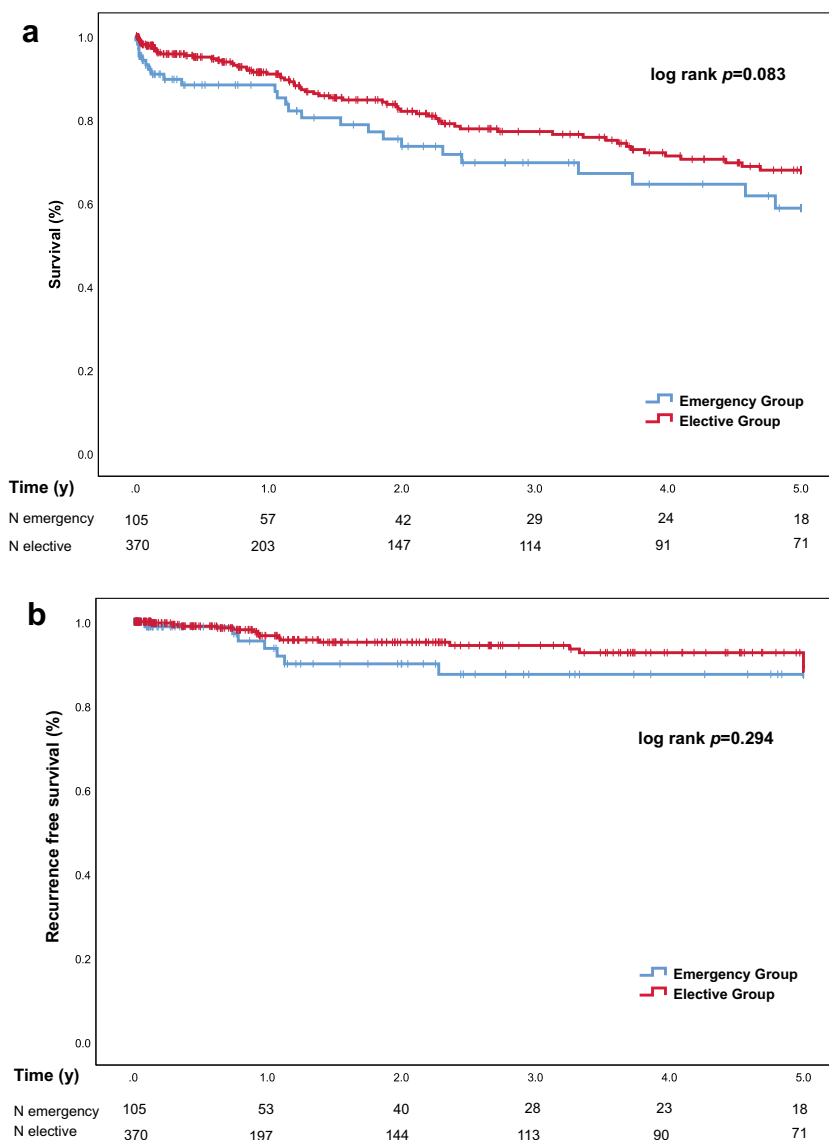
Subgroup-analysis of patients with colon cancer

In order to reduce heterogeneity of the study population, a subgroup-analysis of patients with colon cancer (*n* = 334) was performed. The same baseline characteristics as presented in Table 1 were compared between emergency (28.4%) and elective colon cancer resections (71.6%). As in the overall study population, it was found that the emergency colon cancer group was significantly older (74.0 vs. 69.0 years, *p* = 0.017), had a significantly lower BMI (24.3 vs. 25.9 kg/m², *p* = 0.022), and significantly more often ASA scores ≥ 3 (76.4% vs. 63.0%, *p* = 0.013) compared to the elective colon cancer group. Stoma formation was performed in 56.9% of emergency colon cancer patients versus 25.5% of elective colon cancer patients (*p* < 0.001). Similar to the entire CRC population, T4 carcinomas were significantly more frequent in the emergency versus elective colon cancer group (43.2% vs. 21.3%, *p* = 0.017). Moreover, significantly more lymph nodes

were harvested in the emergency versus elective colon cancer group (26 [IQR 18–37] vs. 22 [16–30], *p* = 0.017). In the emergency surgery group, left-sided colon tumors were significantly more frequent compared to the elective colon cancer group (68.4% vs. 49.0%, *p* = 0.001). No differences were found regarding in-hospital complications rates. However, similar to the entire CRC group, the median HLOS was significantly longer in emergency versus elective colon cancer patients (14 [IQR 10–22] vs. 11 [8–17] days, *p* = 0.001).

In the subgroup of colon cancer patients, the median length of follow-up was 438 (IQR 50–1465) days and did not differ significantly between emergency and elective resections. As found for the entire CRC group, neither the overall survival nor the median disease-free survival was significantly different between the emergency and the elective colon cancer resection group (72.6% vs. 77.8%, *p* = 0.321; 389 vs. 434 days, *p* = 0.583). Multivariable cox regression analysis showed no statistically significant differences in 5-year survival (aHR

Fig. 1 Kaplan-Meier curves of **a** 5-year survival and **b** 5-year recurrence free survival stratified by emergency versus elective CRC resection



1.40; 95%CI 0.78–2.51, $p = 0.260$) or local tumor recurrence (aHR 1.44; 95%CI 0.32–6.56, $p = 0.635$) when comparing emergency with elective colon cancer patients.

Similar results were found for the subgroup of patients with colon cancer.

Discussion

The current study assessed long-term outcomes of CRC patients undergoing emergency versus elective CRC surgery based on an institutional CRC database. Emergency CRC patients presented with locally more advanced tumors and less frequent rectal cancer compared to elective CRC patients. In-hospital mortality was significantly increased in the emergency versus the elective CRC group. However, the long-term oncologic outcomes were similar between the groups.

Tumor characteristics

In the current study, more advanced tumor stages were observed in the emergency CRC compared to the elective CRC group. This finding is not surprising as large tumors are more likely to cause obstruction, perforation, or bleeding, which were the reasons for emergency resections. Moreover, in the current study, patients in the emergency CRC group suffered more frequently from colon cancer compared to the elective group (91% vs. 65%). This is due to the higher incidence of the colon compared to rectal cancer in general and the fact that the study institution is a referral center for elective rectal cancer treatment. Therefore, a subgroup analysis was performed

Table 4 The effect of emergency CRC resection on outcomes

In-hospital mortality			
	OR	95% CI	<i>p</i> value
Unadjusted	2.88	1.23–6.77	0.023
Adjusted ^a	1.82	0.62–5.40	0.278
Five-year survival			
	HR	95% CI	<i>p</i> value
unadjusted	1.49	0.95–2.35	0.086
adjusted ^b	1.38	0.81–2.37	0.237
Five-year local tumor recurrence			
	HR	95% CI	<i>p</i> value
unadjusted	1.59	0.66–3.84	0.299
adjusted ^c	1.48	0.47–4.66	0.500

OR, odds ratio; HR, hazard ratio; CI, confidence interval; ASA score, American Society of Anaesthesiology score; CCI, Charlson comorbidity index; UICC stage, Union for International Cancer Control stage

^a Multivariable logistic regression analysis adjusted for ASA score, tumor localization, operative strategy, and neoadjuvant chemo- and radiotherapy

^b Multivariable cox regression analysis adjusted for age, CCI, operative procedure, UICC stage, and neoadjuvant chemo- and radiotherapy

^c Multivariable cox regression analysis adjusted for age, CCI, operative procedure, UICC stage, and neoadjuvant chemo- and radiotherapy

for patients with colon cancer only to reduce heterogeneity of the populations. However, similar to the entire CRC population, this subgroup analysis revealed comparable results regarding short- and long-term outcomes between the emergency and elective resections.

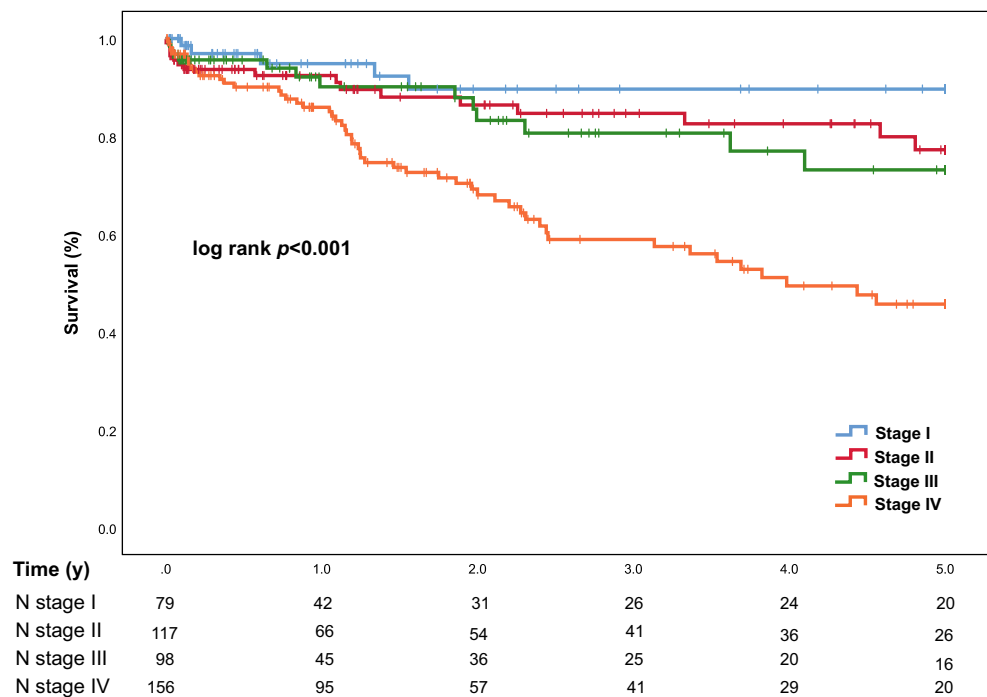
The higher frequency of neo-adjuvant radio- and chemotherapy is well explained by the higher number of patients

with rectal cancer in the elective CRC group. The higher proportion of patients with neoadjuvant therapy may have resulted in a trend towards less local tumor recurrence in the elective CRC group compared to the emergency CRC group. However, overall survival was similar between the two groups (Table 3). This is in line with previous investigations showing that neoadjuvant therapy does decrease local tumor recurrence, but not overall survival [19, 20]. Significantly more patients from the elective CRC group received adjuvant chemotherapy compared to the emergency CRC group (32% vs. 19%, $p = 0.028$). This might be explained by the higher morbidity and in-hospital mortality in the emergency CRC group prohibiting adjuvant chemotherapy. In the subgroup analysis of colon cancer patients, no statistically significant difference regarding adjuvant chemotherapy between the elective versus emergency resection groups was found (26% vs. 19%, $p = 0.283$).

Short-term outcomes

In the current study, 8% in the emergency CRC group and 3% in the elective CRC group died during their hospital stay ($p = 0.023$). Cardiopulmonary events were the most common complications and occurred more frequently in the emergency CRC group (Table 3). The literature on short-term outcomes after emergency versus elective CRC surgery is conflicting. Due to varying methodology and different short-term outcomes measures, the generalizability of these studies is limited [5, 6]. It is important to consider acute systemic pathophysiologic derangements when comparing short-term outcomes of emergency to elective patients. In the current study, the ASA

Fig. 2 Kaplan-Meier curves of 5-year survival stratified by UICC stages I–IV



scores, as a surrogate marker for acute systemic pathophysiologic derangement, were significantly higher in the emergency than in the elective CRC group (Table 1). To our knowledge, there is currently only one previous study in CRC patients, which similarly found the ASA score to be an independent predictor for in-hospital mortality [6]. In addition, emergency CRC patients often present with reduced physiologic reserves, including a catabolic malnutritional state, due to the advanced malignant disease and no possibility for prehabilitation [21]. In the current study, the worse nutritional state is reflected by the significantly lower BMI in the emergency CRC group compared to the elective CRC group (24 vs. 26 kg/m², $p = 0.012$). In order to improve pathophysiology and therefore short-term outcomes in this group of frail patients, an interdisciplinary approach, involving emergency physicians, surgeons, anesthesiologists, nutritionists, and intensivists is required.

Long-term outcomes

Oncologic outcomes in CRC patients are associated to multiple disease- and patient-related factors. As expected, when stratifying the current study population according to the UICC-grades, significant differences between the 5-year survival rates were observed (Fig. 2).

Moreover, the completeness of surgical resection, characterized by the negative resection margins (R0) and the lymph node yield, determines overall survival [22, 23]. In the current study, the percentage of R0-resections was 92% versus 95% and the median lymph node yield was 26 versus 20 lymph nodes when comparing emergency with elective CRC patients. Overall, this represents a good quality of oncologic resection for both study groups [22, 23]. Unexpectedly, the number of harvested lymph nodes was significantly higher in emergency than in elective CRC resections. This finding accounted for both colon and rectal resections (Table 2). To our knowledge, three recent studies have compared the lymph node yield of emergency with elective CRC resections [4, 13, 24]. However, the results are conflicting. In these three studies, the percentage of adequate lymph node yield (> 12 lymph nodes) is higher [13], equal [24] or lower [4] for emergency compared to elective CRC resections. The reasons for these conflicting findings remain unclear. Differences in training between general emergency surgeons and specialized colorectal surgeons have been discussed, however, only in elective CRC surgery [25]. The good oncologic resection quality in the emergency CRC population might be result of the common trunk education and the close collaboration of general emergency surgeons with specialized colorectal surgeons.

A recent retrospective single-institution study from Canada demonstrated a difference in local tumor recurrence and 5-year survival between elective and emergency resection of colon cancer [24]. However, this study was performed in a

selected patient population of stage I to III colon cancer and without adjustment for comorbidities in multivariable analysis. Therefore, this finding needs to be considered carefully.

Limitations of the current study are its retrospective design and relatively low number of patients.

Conclusion

In-hospital mortality in patients undergoing emergency CRC surgery was higher compared to patients undergoing elective CRC surgery. However, adjusted 5-year survival, rate and time to local tumor recurrence were similar between the groups. Increased tumor stages and not emergency resections predict long-term outcomes of CRC patients.

Author contributions Joël Lavanchy, Tobias Haltmeier, and Beat Schnüriger contributed to the study conception and design. Material preparation, data collection, and analysis were performed by Joël Lavanchy, Lukas Vaisnora, Tobias Haltmeier, and Beat Schnüriger. The first draft of the manuscript was written by Joël Lavanchy and all authors commented on previous versions of the manuscript. All authors read and approved the final manuscript.

Compliance with ethical standards

Conflict of interest The authors declare that they have no conflict of interest.

Ethical approval All procedures performed in this study were in accordance with the ethical standards of the cantonal research committee (Cantonal Ethics Committee of Bern, Switzerland, 2017–00792) and with the 1964 Helsinki declaration and its later amendments or comparable ethical standards.

References

1. Douaiher J, Ravipati A, Grams B, Chowdhury S, Alatisse O, Are C (2017) Colorectal cancer-global burden, trends, and geographical variations. *J Surg Oncol* 115(5):619–630. <https://doi.org/10.1002/jso.24578>
2. Global Burden of Disease Cancer C, Fitzmaurice C, Allen C, Barber RM, Barregard L, Bhutta ZA, Brenner H, Dicker DJ, Chimed-Orchir O, Dandona R, Dandona L, Fleming T, Forouzanfar MH, Hancock J, Hay RJ, Hunter-Merrill R, Huynh C, Hosgood HD, Johnson CO, Jonas JB, Khubchandani J, Kumar GA, Kutz M, Lan Q, Larson HJ, Liang X, Lim SS, Lopez AD, MF MI, Marczak L, Marquez N, Mokdad AH, Pinho C, Pourmalek F, Salomon JA, Sanabria JR, Sandar L, Sartorius B, Schwartz SM, Shackelford KA, Shibuya K, Stanaway J, Steiner C, Sun J, Takahashi K, Vollset SE, Vos T, Wagner JA, Wang H, Westerman R, Zeeb H, Zoeckler L, Abd-Allah F, Ahmed MB, Alabed S, Alam NK, Aldhahri SF, Alem G, Alemayohu MA, Ali R, Al-Raddadi R, Amare A, Amoako Y, Artaman A, Asayesh H, Atnafu N, Awasthi A, Saleem HB, Barac A, Bedi N, Bensenor I, Berhane A, Bernabe E, Betsu B, Binagwaho A, Boneya D, Campos-Nonato I, Castaneda-Orjuela C, Catala-Lopez F, Chiang P, Chibueze C, Chittheer A, Choi JY, Cowie B, Damtew S, das Neves J, Dey S, Dharmaratne S, Dhillon P, Ding E, Driscoll T, Ekwueme D, Endries

- AY, Farvid M, Farzadfar F, Fernandes J, Fischer F, GH TT, Gebru A, Gopalani S, Hailu A, Horino M, Horita N, Hussein A, Huybrechts I, Inoue M, Islami F, Jakovljevic M, James S, Javanbakht M, Jee SH, Kasaeian A, Kedir MS, Khader YS, Khang YH, Kim D, Leigh J, Linn S, Lunevicius R, HMA ER, Malekzadeh R, Malta DC, Marcenes W, Markos D, Melaku YA, Meles KG, Mendoza W, Mengiste DT, Meretoja TJ, Miller TR, Mohammad KA, Mohammadi A, Mohammed S, Moradi-Lakeh M, Nagel G, Nand D, Le Nguyen Q, Nolte S, Ogbo FA, Oladimeji KE, Oren E, Pa M, Park EK, Pereira DM, Plass D, Qorbani M, Radfar A, Rafay A, Rahman M, Rana SM, Soreide K, Satpathy M, Sawhney M, Sepanlou SG, Shaikh MA, She J, Shiue I, Shore HR, Shrimel MG, So S, Soneji S, Stathopoulou V, Stroumpoulis K, Sufiyan MB, Sykes BL, Tabares-Seisdedos R, Tadese F, Tedla BA, Tessema GA, Thakur JS, Tran BX, Ukwaia KN, BSC U, Vlassov VV, Weiderpass E, Wubshet Terefe M, Yebyo HG, Yimam HH, Yonemoto N, Younis MZ, Yu C, Zaidi Z, Zaki MES, Zenebe ZM, Murray CJL, Naghavi M (2017) Global, regional, and national cancer incidence, mortality, years of life lost, years lived with disability, and disability-adjusted life-years for 32 cancer groups, 1990 to 2015: a systematic analysis for the global burden of disease study. *JAMA Oncol* 3(4):524–548. <https://doi.org/10.1001/jamaoncol.2016.5688>
3. McArdle CS, Hole DJ (2004) Emergency presentation of colorectal cancer is associated with poor 5-year survival. *Br J Surg* 91(5):605–609. <https://doi.org/10.1002/bjs.4456>
 4. Xu Z, Becerra AZ, Aquina CT, Hensley BJ, Justiniano CF, Boodry C, Swanger AA, Arsalanizadeh R, Noyes K, Monson JR, Fleming FJ (2017) Emergent colectomy is independently associated with decreased long-term overall survival in colon cancer patients. *J Gastrointest Surg* 21(3):543–553. <https://doi.org/10.1007/s11605-017-3355-8>
 5. Sjo OH, Larsen S, Lunde OC, Nesbakken A (2009) Short term outcome after emergency and elective surgery for colon cancer. *Color Dis* 11(7):733–739. <https://doi.org/10.1111/j.1463-1318.2008.01613.x>
 6. Lee CHA, Kong JCH, Heriot AG, Warriar S, Zalberg J, Sitzler P (2018) Short-term outcome of emergency colorectal cancer surgery: results from bi-national colorectal cancer audit. *Int J Color Dis* 34: 63–69. <https://doi.org/10.1007/s00384-018-3169-5>
 7. Ascanelli S, Navarra G, Tonini G, Feo C, Zerbinati A, Pozza E, Carcoforo P (2003) Early and late outcome after surgery for colorectal cancer: elective versus emergency surgery. *Tumori* 89(1):36–41
 8. Bass G, Fleming C, Conneely J, Martin Z, Mealy K (2009) Emergency first presentation of colorectal cancer predicts significantly poorer outcomes: a review of 356 consecutive Irish patients. *Dis Colon Rectum* 52(4):678–684. <https://doi.org/10.1007/DCR.0b013e3181a1d8c9>
 9. Anderson JH, Hole D, McArdle CS (1992) Elective versus emergency surgery for patients with colorectal cancer. *Br J Surg* 79(7): 706–709. <https://doi.org/10.1002/bjs.1800790739>
 10. Scott NA, Jeacock J, Kingston RD (1995) Risk factors in patients presenting as an emergency with colorectal cancer. *Br J Surg* 82(3): 321–323. <https://doi.org/10.1002/bjs.1800820311>
 11. Coco C, Verbo A, Manno A, Mattana C, Covino M, Pedretti G, Pettito L, Rizzo G, Picciocchi A (2005) Impact of emergency surgery in the outcome of rectal and left colon carcinoma. *World J Surg* 29(11):1458–1464. <https://doi.org/10.1007/s00268-005-7826-9>
 12. Chiarugi M, Galatioto C, Panicucci S, Scassa F, Zocco G, Seccia M (2007) Oncologic colon cancer resection in emergency: are we doing enough? *Surg Oncol* 16(Suppl 1):S73–S77. <https://doi.org/10.1016/j.suronc.2007.10.019>
 13. Weixler B, Warschkow R, Ramser M, Droezer R, von Holzen U, Oertli D, Kettelhack C (2016) Urgent surgery after emergency presentation for colorectal cancer has no impact on overall and disease-free survival: a propensity score analysis. *BMC Cancer* 16:208. <https://doi.org/10.1186/s12885-016-2239-8>
 14. Saklad M (1941) Grading of patients for surgical procedures. *Anesthesiology* 2(3):281–284
 15. Charlson ME, Pompei P, Ales KL, MacKenzie CR (1987) A new method of classifying prognostic comorbidity in longitudinal studies: development and validation. *J Chronic Dis* 40(5):373–383
 16. Glynne-Jones R, Wyrwicz L, Tiret E, Brown G, Rodel C, Cervantes A, Arnold D, Committee EG (2017) Rectal cancer: ESMO clinical practice guidelines for diagnosis, treatment and follow-up. *Ann Oncol* 28 (suppl_4):iv22–iv40. doi:<https://doi.org/10.1093/annonc/mdx224>
 17. Heald RJ, Husband EM, Ryall RD (1982) The mesorectum in rectal cancer surgery—the clue to pelvic recurrence? *Br J Surg* 69(10):613–616. <https://doi.org/10.1002/bjs.1800691019>
 18. von Elm E, Altman DG, Egger M, Pocock SJ, Gøtzsche PC, Vandenbroucke JP, Initiative S (2007) The strengthening the reporting of observational studies in epidemiology (STROBE) statement: guidelines for reporting observational studies. *Lancet* 370(9596):1453–1457. [https://doi.org/10.1016/S0140-6736\(07\)61602-X](https://doi.org/10.1016/S0140-6736(07)61602-X)
 19. van Gijn W, Marijnen CA, Nagtegaal ID, Kranenburg EM, Putter H, Wiggers T, Rutten HJ, Pahlman L, Glimelius B, van de Velde CJ, Dutch Colorectal Cancer G (2011) Preoperative radiotherapy combined with total mesorectal excision for resectable rectal cancer: 12-year follow-up of the multicentre, randomised controlled TME trial. *Lancet Oncol* 12(6):575–582. [https://doi.org/10.1016/S1470-2045\(11\)70097-3](https://doi.org/10.1016/S1470-2045(11)70097-3)
 20. Sauer R, Liersch T, Merkel S, Fietkau R, Hohenberger W, Hess C, Becker H, Raab HR, Villanueva MT, Witzigmann H, Wittekind C, Beissbarth T, Rodel C (2012) Preoperative versus postoperative chemoradiotherapy for locally advanced rectal cancer: results of the German CAO/ARO/AIO-94 randomized phase III trial after a median follow-up of 11 years. *J Clin Oncol* 30(16):1926–1933. <https://doi.org/10.1200/JCO.2011.40.1836>
 21. Minnella EM, Carli F (2018) Prehabilitation and functional recovery for colorectal cancer patients. *Eur J Surg Oncol* 44(7):919–926. <https://doi.org/10.1016/j.ejso.2018.04.016>
 22. Norwood MG, Sutton AJ, West K, Sharpe DP, Hemingway D, Kelly MJ (2010) Lymph node retrieval in colorectal cancer resection specimens: national standards are achievable, and low numbers are associated with reduced survival. *Color Dis* 12(4):304–309. <https://doi.org/10.1111/j.1463-1318.2009.01788.x>
 23. Bilchik A, Nissan A, Wainberg Z, Shen P, McCarter M, Protic M, Howard R, Elashoff D, Tyler J, Peoples GE, Stojadinovic A (2010) Surgical quality and nodal ultrastaging is associated with long-term disease-free survival in early colorectal cancer: an analysis of 2 international multicenter prospective trials. *Ann Surg* 252(3):467–474; discussion 474–466. <https://doi.org/10.1097/SLA.0b013e3181f19767>
 24. Wanis KN, Ott M, Van Koughnett JAM, Colquhoun P, Brackstone M (2018) Long-term oncological outcomes following emergency resection of colon cancer. *Int J Color Dis* 33(11):1525–1532. <https://doi.org/10.1007/s00384-018-3109-4>
 25. Hall GM, Shanmugan S, Bleier JI, Jeganathan AN, Epstein AJ, Paulson EC (2016) Colorectal specialization and survival in colorectal cancer. *Color Dis* 18(2):O51–O60. <https://doi.org/10.1111/codi.13246>

Publisher's note Springer Nature remains neutral with regard to jurisdictional claims in published maps and institutional affiliations.