




# HIV Coinfection Is Associated with Low-Fitness *rpoB* Variants in Rifampicin-Resistant *Mycobacterium tuberculosis*

Chloé Loiseau,<sup>a,b</sup> Daniela Brites,<sup>a,b</sup> Miriam Reinhard,<sup>a,b</sup> Kathrin Zürcher,<sup>c</sup> Sonia Borrell,<sup>a,b</sup> Marie Ballif,<sup>c</sup>  Lukas Fenner,<sup>c</sup> Helen Cox,<sup>d</sup> Liliana K. Rutaiwa,<sup>a,b,e</sup> Robert J. Wilkinson,<sup>f,g,h</sup> Marcel Yotebieng,<sup>i</sup> E. Jane Carter,<sup>j</sup> Alash'le Abimiku,<sup>k</sup> Olivier Marcy,<sup>l,m</sup> Eduardo Gotuzzo,<sup>n</sup> Anchalee Avihingsanon,<sup>o</sup> Nicola Zetola,<sup>p</sup> Basra Doulla,<sup>q,r</sup> Erik C. Böttger,<sup>s,t</sup> Matthias Egger,<sup>c,u</sup> Sebastien Gagneux<sup>a,b</sup>

<sup>a</sup>Swiss Tropical and Public Health Institute, Basel, Switzerland

<sup>b</sup>University of Basel, Basel, Switzerland

<sup>c</sup>Institute of Social and Preventive Medicine, University of Bern, Bern, Switzerland

<sup>d</sup>Institute of Infectious Disease and Molecular Medicine and Wellcome Centre for Infectious Disease Research in Africa, University of Cape Town, Cape Town, South Africa

<sup>e</sup>Ifakara Health Institute, Bagamoyo, Tanzania

<sup>f</sup>Wellcome Centre for Infectious Diseases Research in Africa, University of Cape Town, Observatory, South Africa

<sup>g</sup>Department of Infectious Diseases, Imperial College London, London, United Kingdom

<sup>h</sup>Francis Crick Institute, London, United Kingdom

<sup>i</sup>Division of General Internal Medicine, Department of Medicine, Albert Einstein College of Medicine, Bronx, New York, USA

<sup>j</sup>Department of Medicine, Moi University School of Medicine, and Moi Teaching and Referral Hospital, Eldoret, Kenya

<sup>k</sup>Institute of Human Virology, Abuja, Nigeria

<sup>l</sup>Centre de Prise en Charge de Recherche et de Formation, Yopougon, Abidjan, Côte d'Ivoire

<sup>m</sup>Bordeaux Population Health Research Center, Inserm U1219, University of Bordeaux, Bordeaux, France

<sup>n</sup>TB Research Unit, Instituto de Medicina Tropical Alexander von Humboldt, Universidad Peruana Cayetano Heredia, Lima, Peru

<sup>o</sup>The HIV Netherlands Australia Thailand (HIV-NAT) Research Collaboration, Thai Red Cross AIDS Research Centre and Tuberculosis Research Unit, Faculty of Medicine, Chulalongkorn University, Bangkok, Thailand

<sup>p</sup>University of Pennsylvania, Philadelphia, Pennsylvania, USA

<sup>q</sup>Central Tuberculosis Reference Laboratory, Dar es Salaam, Tanzania

<sup>r</sup>National Tuberculosis and Leprosy Programme, Dar es Salaam, Tanzania

<sup>s</sup>Institute of Medical Microbiology, University of Zurich, Zurich, Switzerland

<sup>t</sup>Swiss National Center for Mycobacteria, Zurich, Switzerland

<sup>u</sup>Centre for Infectious Disease Epidemiology and Research, Faculty of Health Sciences, University of Cape Town, Cape Town, South Africa

**ABSTRACT** We analyzed 312 drug-resistant genomes of *Mycobacterium tuberculosis* isolates collected from HIV-coinfected and HIV-negative TB patients from nine countries with a high tuberculosis burden. We found that rifampicin-resistant *M. tuberculosis* strains isolated from HIV-coinfected patients carried disproportionately more resistance-conferring mutations in *rpoB* that are associated with a low fitness in the absence of the drug, suggesting these low-fitness *rpoB* variants can thrive in the context of reduced host immunity.

**KEYWORDS** HIV-TB coinfection, *Mycobacterium tuberculosis*, drug resistance, fitness cost, rifampicin

**T**uberculosis (TB), caused by members of the *Mycobacterium tuberculosis* complex, is a leading cause of death worldwide, killing more people than any other infectious disease. Among the many factors driving the global TB epidemics, two factors stand out as particularly important: antibiotic resistance and HIV coinfection (1). Although the impact of both of these factors individually is well recognized, the interaction between them is less clear and likely depends on the particular epidemiologic setting (2). HIV coinfection and drug-resistant TB often coexist in severe epidemics, which indicates

**Citation** Loiseau C, Brites D, Reinhard M, Zürcher K, Borrell S, Ballif M, Fenner L, Cox H, Rutaiwa LK, Wilkinson RJ, Yotebieng M, Carter EJ, Abimiku A, Marcy O, Gotuzzo E, Avihingsanon A, Zetola N, Doulla B, Böttger EC, Egger M, Gagneux S. 2020. HIV coinfection is associated with low-fitness *rpoB* variants in rifampicin-resistant *Mycobacterium tuberculosis*. *Antimicrob Agents Chemother* 64:e00782-20. <https://doi.org/10.1128/AAC.00782-20>.

**Copyright** © 2020 Loiseau et al. This is an open-access article distributed under the terms of the [Creative Commons Attribution 4.0 International license](https://creativecommons.org/licenses/by/4.0/).

Address correspondence to Sebastien Gagneux, [sebastien.gagneux@swisstph.ch](mailto:sebastien.gagneux@swisstph.ch).

**Received** 23 April 2020

**Returned for modification** 18 June 2020

**Accepted** 23 July 2020

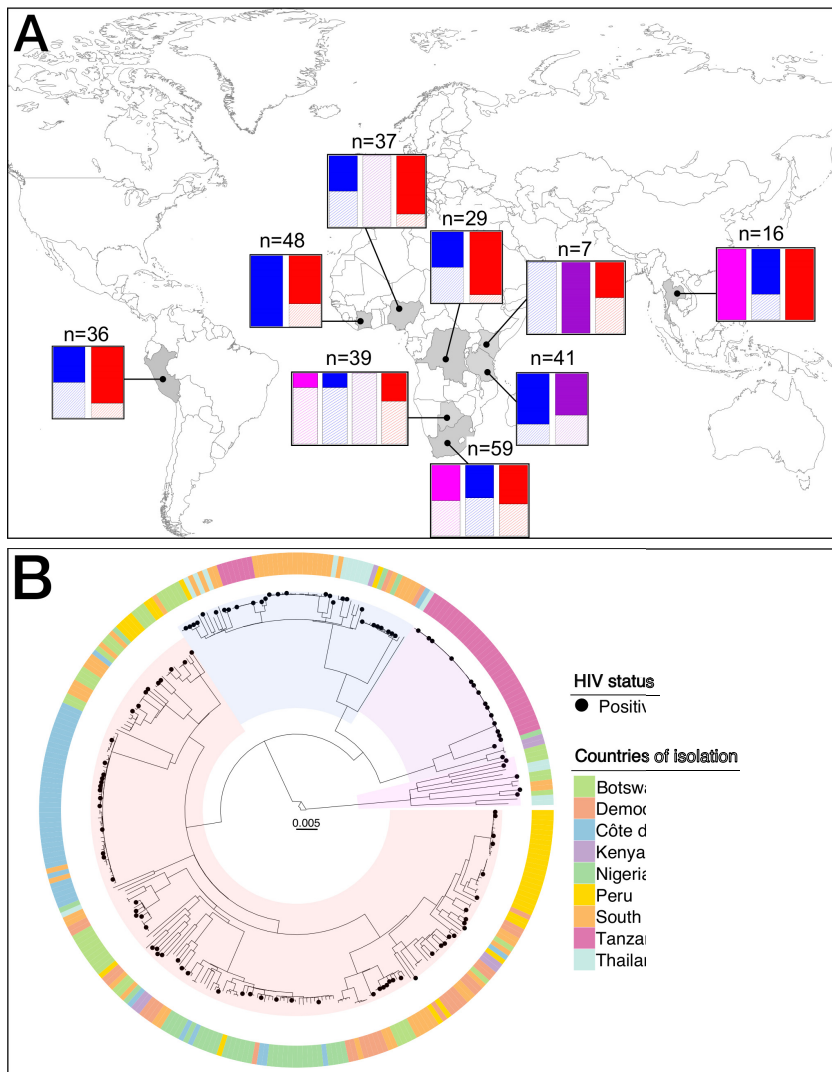
**Accepted manuscript posted online** 27 July 2020

**Published** 21 September 2020

spread of drug-resistant *M. tuberculosis* strains from immunocompromised patients (3–5). The propensity of drug-resistant *M. tuberculosis* strains to spread is influenced by the fitness cost associated with drug resistance determinants (6). Specifically, bacterial strains that have acquired drug resistance-conferring mutations may be less transmissible than their susceptible counterparts, although this fitness cost can be ameliorated by compensatory mutations (7–10). Moreover, the effect of different resistance-conferring mutations on fitness can be heterogeneous (11). In the clinical setting, there is a selection for high-fitness and/or compensated drug-resistant *M. tuberculosis* strains in TB patients (12). However, in immunocompromised hosts, such as HIV-coinfected patients, even strains with low-fitness resistance mutations might propagate efficiently (13–15), which could partially explain why drug-resistant TB has been associated with HIV coinfection (16, 17). However, to date, no evidence directly supports the notion that the immunological environment created by HIV coinfection modifies the fitness of drug-resistant *M. tuberculosis* (5, 18, 19).

In this study, we tested the hypothesis that resistance-conferring mutations with low fitness in *M. tuberculosis* are overrepresented among HIV-coinfected TB patients. We focused our analysis on isoniazid and rifampicin, the two most important first-line anti-TB drugs, for which resistance-conferring mutations have been shown to differ in their fitness effects when measured in the laboratory (11). In addition, the frequency of the resistance alleles found in a clinical setting correlates well with the *in vitro* fitness of strains (12, 20). To explore the association between HIV coinfection and the fitness effect of different drug resistance-conferring mutations in *M. tuberculosis*, we compiled a collection of drug-resistant strains using the global International Epidemiology Databases to Evaluate AIDS (IeDEA, <http://www.iedea.org>) consortium (21, 22) as a platform. For this study, 312 strains were collected from HIV-coinfected and HIV uninfected TB patients originating from nine countries on three continents: Peru, Thailand, South Africa, Kenya, Côte d'Ivoire, Botswana, Democratic Republic of the Congo, Nigeria, and Tanzania (Fig. 1; see also Table S1 in the supplemental material). The association between the fitness of isoniazid resistance-conferring mutations and HIV coinfection was tested in a univariate analysis (Fig. S1). Isoniazid resistance-conferring mutations were divided into three groups, as previously described (23): *katG* S315T mutation, *katG* mutations other than S315T, and *inhA* promoter mutations only. The S315T substitution in *katG* causes high-level isoniazid resistance while retaining some catalase/peroxidase functions (24). Conversely, the *inhA* promoter mutation does not affect KatG activity. Other substitutions/deletions in *katG* have been associated with a lower fitness in the laboratory and are observed only rarely among clinical isolates (23, 25, 26). In the case of rifampicin, the association between the fitness of *rpoB* variants and HIV coinfection was tested in both a univariate and multivariate analysis (Table 1). Resistance-conferring variants in *rpoB* were classified into two groups based on their fitness effects documented previously (11, 20, 27). The mutation *rpoB* S450L was considered high fitness, since this mutation was previously shown to confer a low fitness cost in the laboratory (11) and is generally the most common in clinical strains (28). Any other resistance-conferring variant affecting *rpoB* was considered low fitness (11). The multivariable logistic regression model with outcome of low-fitness *rpoB* variants was adjusted for host-related factors (history of TB, country of isolation, sex, and age) (29) and bacterial factors (*M. tuberculosis* lineage, presence of an *rpoA*-C compensatory mutation, clustering of the genome inferred by genetic relatedness). Seventy-six patients from Tanzania and Botswana were excluded from the model due to missing or unknown clinical data (see the supplemental methods file).

Out of 312 patients, 113 (36.2%) were HIV coinfecting, 120 (38.5%) were women, 115 (36.9%) were newly diagnosed TB cases (therefore, treatment naive), 276 (88.5%) harbored isoniazid resistance-conferring mutations, with or without additional resistance, and 282 (90.4%) harbored rifampicin resistance-conferring mutations, with or without additional resistance. In total, 78.8% ( $n = 246$ ) of the strains were classified as being at least multidrug resistant, defined as resistance to isoniazid and rifampicin with or without additional resistance to second-line drugs. Among the 113 HIV-coinfected



**FIG 1** (A) Frequency of *M. tuberculosis* lineages by HIV status for countries sampled. Countries colored in gray were sampled. The bar plots indicate the proportion of each lineage represented in this study. Magenta corresponds to *M. tuberculosis* lineage 1, blue corresponds to *M. tuberculosis* lineage 2, purple corresponds to *M. tuberculosis* lineage 3, and red corresponds to *M. tuberculosis* lineage 4. Solid color corresponds to HIV-negative patients, and hatches correspond to HIV-coinfected TB patients. The number of genomes sampled in each country is indicated on top of the bar plots. (B) Phylogenetic tree of the data set used in the study. Maximum likelihood phylogeny of 312 whole-genome sequences based on 18,531 variable positions. The scale bar indicates the number of substitutions per polymorphic site. The phylogeny was rooted on *Mycobacterium canettii*. *M. tuberculosis* strains isolated from HIV-coinfected patients are indicated by black dots. The peripheral ring depicts the country of isolation of the strains sequenced.

individuals, 34 (30%) were on antiretroviral therapy (ART), 26 (23%) were not, and 53 (47%) had an unknown ART start date. Four of the eight known *M. tuberculosis* lineages were represented in the following proportions: 11 L1 (3.5%), 57 L2 (18.3%), 38 L3 (12.2%), and 206 L4 (66.0%). After dividing a total of 276 isoniazid-resistant strains into the three groups of isoniazid resistance-conferring mutations defined above, we found similar proportions in HIV-coinfected and HIV-uninfected patients (chi-square test,  $P = 0.54$ ; Fig. S1), and, as expected, the *katG* S315T mutation was the most frequent mutation in both categories (overall, found in 80% of isoniazid-resistant strains). In the case of rifampicin resistance, a univariate and multivariate analysis of 203 strains with complete clinical records indicated that HIV-coinfected TB patients carried a higher proportion of low-fitness *rpoB* resistance variants than HIV-negative patients (72.3%

**TABLE 1** Results of the univariate and multivariate analysis showing host and bacterial factors associated with low fitness *rpoB* variants in 203 TB patients<sup>a</sup>

Parameter for fitness of <i>rpoB</i> variants	No. (%) of patients by fitness level		Univariable		Multivariable	
	Low	High	OR (95% CI)	P value	OR (95% CI)	P value
HIV status						
HIV <sup>-</sup>	71 (51.4)	67 (48.6)	Reference		Reference	
HIV <sup>+</sup>	47 (72.3)	18 (27.7)	2.46 (1.30–4.66)	0.006	4.58 (1.69–12.44)	0.003
Presence of a compensatory mutation in <i>rpoA-C</i>						
No	117 (71.3)	47 (28.7)	Reference		Reference	
Yes	1 (2.6)	38 (97.4)	0.01 (0.00–0.08)	< 0.0001	0.01 (0.00–0.06)	< 0.0001
<i>M. tuberculosis</i> lineage						
2	16 (44.4)	20 (55.6)	Reference		Reference	
4	99 (61.5)	62 (38.5)	2.00 (0.96–4.14)	0.06	3.10 (0.94–10.21)	0.06
Other (L1 or L3)	3 (50.0)	3 (50.0)	1.25 (0.22–7.05)	0.80	0.97 (0.11–8.31)	0.98
Clustering of the genome						
No	109 (59.6)	74 (40.4)	Reference		Reference	
Yes	9 (45.0)	11 (55.0)	0.56 (0.22–1.41)	0.21	1.05 (0.28–3.90)	0.94
Country of isolation						
South Africa	29 (55.8)	23 (44.2)	Reference		Reference	
Democratic Republic of Congo	11 (37.9)	18 (62.1)	0.48 (0.19–1.23)	0.13	0.39 (0.12–1.34)	0.14
Côte d'Ivoire	35 (79.5)	9 (20.5)	3.08 (1.24–7.70)	0.02	2.04 (0.58–7.23)	0.27
Kenya	4 (66.7)	2 (33.3)	1.59 (0.27–9.44)	0.61	0.94 (0.10–8.42)	0.96
Nigeria	20 (58.8)	14 (41.2)	1.13 (0.47–2.72)	0.78	1.00 (0.29–3.40)	0.99
Peru	16 (53.3)	14 (46.7)	0.91 (0.37–2.23)	0.83	1.49 (0.33–6.70)	0.60
Thailand	3 (37.5)	5 (62.5)	0.48 (0.10–2.20)	0.34	0.42 (0.07–2.65)	0.36
Age						
Mean (SD)	32.5 (10.4)	34.3 (12.3)	0.99 (0.96–1.01)	0.25	0.97 (0.94–1.01)	0.10
Sex						
Female	47 (59.5)	32 (40.5)	Reference			
Male	71 (57.3)	53 (42.7)	0.91 (0.51–1.62)	0.75	0.77 (0.34–1.71)	0.52
History of TB disease						
No	35 (52.2)	32 (47.8)	Reference			
Yes	83 (61.0)	53 (39.0)	1.43 (0.79–2.58)	0.23	0.96 (0.34–2.73)	0.94

<sup>a</sup>Number of observations in model, 203; CI, confidence interval. The odds ratios and *P* values were obtained from the regression model.

versus 51.4%). The univariate analysis showed higher odds of having a low-fitness *rpoB* variant in HIV-coinfected patients (odds ratio, 2.46 [95% confidence interval, 1.30 to 4.66], *P* = 0.006) (Table 1). Our multivariable regression analysis confirmed these results and showed an association between low-fitness *rpoB* variants and HIV coinfection while controlling for other factors (odds ratio, 4.58 [95% confidence interval, 1.69, 12.44], *P* = 0.003) (Table 1). This association can be explained in at least two ways. First, HIV-coinfected patients are thought to have fewer lung cavities on average and lower sputum bacillary load (30, 31). The resulting smaller *M. tuberculosis* population size would lead to fewer replication events, possibly reducing the number of mutations available for selection to act upon. In other words, low-fitness variants and high-fitness variants would co-occur less often in an HIV-coinfected patient, such that competition between them would be less likely. This scenario would be relevant for *de novo* acquisition of low-fitness drug-resistant variants within an HIV-coinfected patient. Second, following the transmission of a drug-resistant strain with low fitness to a host with reduced immunity, weaker immune pressure acting on this strain might lead to better bacterial survival. The association between low-fitness *rpoB* variants and HIV coinfection remained significant even after adjusting for the different epidemiologic settings (i.e., countries) and the strain genetic background (i.e., *M. tuberculosis* lineages). We also observed that strains carrying the *rpoB* S450L resistance-conferring mutation

were more likely to also carry a compensatory mutation in *rpoA-C* (97.4% versus 2.6%) (Table 1). Even though this phenomenon seems counterintuitive, it has been described multiple times (7, 9, 32–34) and, thus, might point to different mechanisms of compensation in strains carrying resistance mutations other than *rpoB* S450L. In addition, in our study, L4 strains were associated with low-fitness *rpoB* variants compared to L2 (odds ratio, 3.10 [95% confidence interval, 0.94, 10.21],  $P = 0.06$ ) (Table 1), indicating that the strain genetic background plays a role in shaping the cost of resistance, as was previously shown for other bacterial species (35) and for other drugs (36). In the regression analysis, we had several categorical variables with only a few observations. Therefore, statistical power, especially for country of isolation, was low, and the results should be interpreted with care.

HIV-coinfected TB patients are generally thought to have a reduced potential for TB transmission (30, 37), because these patients have reduced formation of lung cavities, more extrapulmonary disease, and a shorter period of infectiousness due to earlier diagnosis or higher mortality, especially in the absence of antiretroviral treatment and if antibiotic resistance is already present (4). Based on the overrepresentation of low-fitness *rpoB* mutations in the context of HIV coinfection, one would expect a further reduction of the transmission potential of drug-resistant TB in this context. However, outbreaks of drug-resistant TB in HIV-coinfected patients have been reported (3). Such outbreaks might be explained by (i) a higher risk of *M. tuberculosis* infection and reinfection due to diminished host immunity, (ii) on-going transmission of drug-resistant *M. tuberculosis* from a larger pool of immunocompetent TB patients to immunocompromised patients, (iii) transmission occurring in conducive environments, such as health care settings, where both HIV-coinfected individuals and drug-resistant TB patients are more likely to coexist, and (iv) *M. tuberculosis* strains carrying high-fitness drug resistance mutations.

In summary, using a global sample of drug-resistant *M. tuberculosis* clinical strains from HIV-coinfected and HIV-negative TB patients, we showed that low-fitness *rpoB* variants were overrepresented in HIV-coinfected patients, and that this association was independent from other potential confounding factors. Taken together, our results provide new insights into how HIV coinfection can impact the fitness of drug-resistant *M. tuberculosis*.

**Data availability.** The *M. tuberculosis* whole-genome sequences from the patients are available on NCBI under several project identifiers. The accession number for each genome is indicated in Supplemental Table S1.

## SUPPLEMENTAL MATERIAL

Supplemental material is available online only.

**SUPPLEMENTAL FILE 1**, PDF file, 0.1 MB.

**SUPPLEMENTAL FILE 2**, XLSX file, 0.03 MB.

## ACKNOWLEDGMENTS

We thank all the sites that participated in this study and the patients whose data were used in this study. We thank Jan Hattendorf for providing statistical help and Sebastian M. Gygli for critically reading the manuscript. Calculations were performed at the sciCORE (<http://scicore.unibas.ch/>) scientific computing core facility at University of Basel.

This research was supported by the Swiss National Science Foundation (grant numbers 153442, 310030\_188888, 174281, and IZRJZ3\_164171). The International Epidemiology Databases to Evaluate AIDS (IeDEA) is supported by the U.S. National Institutes of Health's National Institute of Allergy and Infectious Diseases, the Eunice Kennedy Shriver National Institute of Child Health and Human Development, the National Cancer Institute, the National Institute of Mental Health, the National Institute on Drug Abuse, the National Heart, Lung, and Blood Institute, the National Institute on Alcohol Abuse and Alcoholism, the National Institute of Diabetes and Digestive and Kidney Diseases, the Fogarty International Center, and the National Library of Medicine:



Asia-Pacific, U01AI069907; CCASAnet, U01AI069923; Central Africa, U01AI096299; East Africa, U01AI069911; NA-ACCORD, U01AI069918; Southern Africa, U01AI069924; and West Africa, U01AI069919. Informatics resources are supported by the Harmonist Project, R24AI124872. This work is solely the responsibility of the authors and does not necessarily represent the official views of any of the institutions mentioned above. R.J.W. is supported by the Francis Crick Institute, which receives funding from Wellcome (FC0010218), CRUK (FC0010218), and UKR1 (FC0010218). He is also supported by Wellcome (104803 and 203135).

## REFERENCES

- World Health Organization. 2019. Global tuberculosis report 2019. World Health Organization, Geneva, Switzerland. <https://apps.who.int/iris/bitstream/handle/10665/329368/9789241565714-eng.pdf?ua=1>.
- Getahun H, Gunneberg C, Granich R, Nunn P. 2010. HIV infection-associated tuberculosis: the epidemiology and the response. *Clin Infect Dis* 50:S201–S207. <https://doi.org/10.1086/651492>.
- Wells CD, Cegielski JP, Nelson LJ, Laserson KF, Holtz TH, Finlay A, Castro KG, Weyer K. 2007. HIV infection and multidrug-resistant tuberculosis—the perfect storm. *J Infect Dis* 196:S86–S107. <https://doi.org/10.1086/518665>.
- Gandhi NR, Moll A, Sturm AW, Pawinski R, Govender T, Lalloo U, Zeller K, Andrews J, Friedland G. 2006. Extensively drug-resistant tuberculosis as a cause of death in patients co-infected with tuberculosis and HIV in a rural area of South Africa. *Lancet* 368:1575–1580. [https://doi.org/10.1016/S0140-6736\(06\)69573-1](https://doi.org/10.1016/S0140-6736(06)69573-1).
- Eldholm V, Rieux A, Monteserin J, Lopez JM, Palmero D, Lopez B, Ritacco V, Didelot X, Balloux F. 2016. Impact of HIV co-infection on the evolution and transmission of multidrug-resistant tuberculosis. *Elife* 5:1–19. <https://doi.org/10.7554/eLife.16644>.
- Cohen T, Murray M. 2004. Modeling epidemics of multidrug-resistant *M. tuberculosis* of heterogeneous fitness. *Nat Med* 10:1117–1121. <https://doi.org/10.1038/nm1110>.
- Comas I, Borrell S, Roetzer A, Rose G, Malla B, Kato-Maeda M, Galagan J, Niemann S, Gagneux S. 2011. Whole-genome sequencing of rifampicin-resistant *Mycobacterium tuberculosis* strains identifies compensatory mutations in RNA polymerase genes. *Nat Genet* 44:106–110. <https://doi.org/10.1038/ng.1038>.
- Casali N, Nikolayevskiy V, Balabanova Y, Ignatyeva O, Kontsevaya I, Harris SR, Bentley SD, Parkhill J, Nejentsev S, Hoffner SE, Horstmann RD, Brown T, Drobniowski F. 2012. Microevolution of extensively drug-resistant tuberculosis in Russia. *Genome Res* 22:735–745. <https://doi.org/10.1101/gr.128678.111>.
- De Vos M, Müller B, Borrell S, Black PA, Van Helden PD, Warren RM, Gagneux S, Victor TC. 2013. Putative compensatory mutations in the *rpoC* gene of rifampin-resistant *Mycobacterium tuberculosis* are associated with ongoing transmission. *Antimicrob Agents Chemother* 57: 827–832. <https://doi.org/10.1128/AAC.01541-12>.
- Shcherbakov D, Akbergenov R, Matt T, Sander P, Andersson DI, Böttger EC. 2010. Directed mutagenesis of *Mycobacterium smegmatis* 16S rRNA to reconstruct the in vivo evolution of aminoglycoside resistance in *Mycobacterium tuberculosis*. *Mol Microbiol* 77:830–840. <https://doi.org/10.1111/j.1365-2958.2010.07218.x>.
- Gagneux S, Long CD, Small PM, Van T, Schoolnik GK, Bohannon BJM. 2006. The competitive cost of antibiotic resistance in *Mycobacterium tuberculosis*. *Science* 312:1944–1946. <https://doi.org/10.1126/science.1124410>.
- Sander P, Springer B, Prammananan T, Sturmfels A, Kappler M, Pletschette M, Böttger EC. 2002. Fitness cost of chromosomal drug resistance-conferring mutations. *Antimicrob Agents Chemother* 46: 1204–1211. <https://doi.org/10.1128/aac.46.5.1204-1211.2002>.
- Dye C, Williams BG, Espinal MA, Ravigione MC. 2002. Erasing the world's slow stain: strategies to beat multidrug-resistant tuberculosis. *Science* 295:2042–2046. <https://doi.org/10.1126/science.1063814>.
- Cohen T, Dye C, Colijn C, Williams B, Murray M. 2009. Mathematical models of the epidemiology and control of drug-resistant TB. *Expert Rev Respir Med* 3:67–79. <https://doi.org/10.1586/17476348.3.1.67>.
- Borrell S, Gagneux S. 2009. Infectiousness, reproductive fitness and evolution of drug-resistant *Mycobacterium tuberculosis*. *Int J Tuberc Lung Dis* 13:1456–1466.
- Mesfin YM, Hailemariam D, Biadgign S, Kibret KT. 2014. Association between HIV/AIDS and multi-drug resistance tuberculosis: a systematic review and meta-analysis. *PLoS One* 9:e82235. <https://doi.org/10.1371/journal.pone.0082235>.
- Suchindran S, Brouwer ES, Van Rie A. 2009. Is HIV infection a risk factor for multi-drug resistant tuberculosis? A systematic review. *PLoS One* 4:e5561. <https://doi.org/10.1371/journal.pone.0005561>.
- Khan PY, Yates TA, Osman M, Warren RM, van der Heijden Y, Padayatchi N, Nardell EA, Moore D, Mathema B, Gandhi N, Eldholm V, Dheda K, Hesselning AC, Mizrahi V, Rustomjee R, Pym A. 2019. Transmission of drug-resistant tuberculosis in HIV-endemic settings. *Lancet Infect Dis* 19:e77–e88. [https://doi.org/10.1016/S1473-3099\(18\)30537-1](https://doi.org/10.1016/S1473-3099(18)30537-1).
- Ssengooba W, Lukoye D, Meehan CJ, Kateete DP, Joloba ML, De Jong BC, Cobelens FG, Van Leth F. 2017. Tuberculosis resistance-conferring mutations with fitness cost among HIV-positive individuals in Uganda. *Int J Tuberc Lung Dis* 21:531–536. <https://doi.org/10.5588/ijtld.16.0544>.
- Billington OJ, Mchugh TD, Gillespie SH. 1999. Physiological cost of rifampin resistance induced in vitro in *Mycobacterium tuberculosis*. *Antimicrob Agents Chemother* 43:1866–1869. <https://doi.org/10.1128/AAC.43.8.1866>.
- Egger M, Ekouevi DK, Williams C, Lyamuya RE, Mukumbi H, Braitstein P, Hartwell T, Graber C, Chi BH, Boule A, Dabis F, Wools-Kaloustian K. 2012. Cohort profile: the international epidemiological databases to evaluate AIDS (IleDEA) in sub-Saharan Africa. *Int J Epidemiol* 41:1256–1264. <https://doi.org/10.1093/ije/dyr080>.
- Mcgowan CC, Cahn P, Gotuzzo E, Padgett D, Pape JW, Wolff M, Schechter M, Masys DR. 2007. Cohort profile: Caribbean, Central and South America Network for HIV research (CCASAnet) collaboration within the International Epidemiologic Databases to Evaluate AIDS (IleDEA) programme. *Int J Epidemiol* 36:969–976. <https://doi.org/10.1093/ije/dym073>.
- Gagneux S, Burgos MV, DeRiemer K, Enciso A, Muñoz S, Hopewell PC, Small PM, Pym AS. 2006. Impact of bacterial genetics on the transmission of isoniazid-resistant *Mycobacterium tuberculosis*. *PLoS Pathog* 2:e61. <https://doi.org/10.1371/journal.ppat.0020061>.
- Pym AS, Saint-Joanis B, Cole ST. 2002. Effect of *katG* mutations on the virulence of *Mycobacterium tuberculosis* and the implication for transmission in humans. *Infect Immun* 70:4955–4960. <https://doi.org/10.1128/iai.70.9.4955-4960.2002>.
- Heym B, Alzari PM, Honore N, Cole ST. 1995. Missense mutations in the catalase-peroxidase gene, *katG*, are associated with isoniazid resistance in *Mycobacterium tuberculosis*. *Mol Microbiol* 15:235–245. <https://doi.org/10.1111/j.1365-2958.1995.tb02238.x>.
- van Soolingen D, de Haas PEW, van Doorn HR, Kuijper E, Rinder H, Borgdorff MW. 2000. Mutations at amino acid position 315 of the *katG* gene are associated with high-level resistance to isoniazid, other drug resistance, and successful transmission of *Mycobacterium tuberculosis* in The Netherlands. *J Infect Dis* 182:1788–1790. <https://doi.org/10.1086/317598>.
- Mariam DH, Mengistu Y, Hoffner SE, Andersson DI. 2004. Effect of *rpoB* mutations conferring rifampin resistance on fitness of *Mycobacterium tuberculosis*. *Antimicrob Agents Chemother* 48:1289–1294. <https://doi.org/10.1128/aac.48.4.1289-1294.2004>.
- Sandgren A, Strong M, Muthukrishnan P, Weiner BK, Church GM, Murray MB. 2009. Tuberculosis drug resistance mutation database. *PLoS Med* 6:e1000002. <https://doi.org/10.1371/journal.pmed.1000002>.
- Zürcher K, Ballif M, Fenner L, Borrell S, Keller PM, Gnokoro J, Marcy O, Yotebieng M, Diero L, Carter EJ, Rockwood N, Wilkinson RJ, Cox H, Ezati N, Abimiku AG, Collantes J, Avihingsanon A, Kawkitinarong K, Reinhard

- M, Hömke R, Huebner R, Gagneux S, Böttger EC, Egger M, Zürcher K, Egger M, Fenner L, Ballif M, Chamartin F, Gagneux S, Borrell S, Reinhard M, Boettger EC, Keller P, Hömke R, Abimiku A, Ezati N, Yotebieng M, Wenzl L, Tabala M, Cox H, Rockwood N, Warren R, Streicher E, Wilkinson RJ, Carter EJ, Diero L, Collantes J, Zamudio C, Huebner R, Sohn A, Avihingsanon A, Petersen T, Kawkitinarong K, Kasipong N, Gnokoro J, N'Guessan K, Marcy O. 2019. Drug susceptibility testing and mortality in patients treated for tuberculosis in high-burden countries: a multicentre cohort study. *Lancet Infect Dis* 19:298–307. [https://doi.org/10.1016/S1473-3099\(18\)30673-X](https://doi.org/10.1016/S1473-3099(18)30673-X).
30. Kwan C, Ernst JD. 2011. HIV and tuberculosis: a deadly human syndemic. *Clin Microbiol Rev* 24:351–376. <https://doi.org/10.1128/CMR.00042-10>.
31. Hanrahan CF, Theron G, Bassett J, Dheda K, Scott L, Stevens W, Sanne I, Van Rie A. 2014. Xpert MTB/RIF as a measure of sputum bacillary burden: variation by HIV status and immunosuppression. *Am J Respir Crit Care Med* 189:1426–1434. <https://doi.org/10.1164/rccm.201312-2140OC>.
32. Casali N, Nikolayevskyy V, Balabanova Y, Harris SR, Ignatyeva O, Kontsevaya I, Corander J, Bryant J, Parkhill J, Nejentsev S, Horstmann RD, Brown T, Drobniowski F. 2014. Evolution and transmission of drug-resistant tuberculosis in a Russian population. *Nat Genet* 46:279–286. <https://doi.org/10.1038/ng.2878>.
33. Eldholm V, Monteserin J, Rieux A, Lopez B, Sobkowiak B, Ritacco V, Balloux F. 2015. Four decades of transmission of a multidrug-resistant *Mycobacterium tuberculosis* outbreak strain. *Nat Commun* 6:7119. <https://doi.org/10.1038/ncomms8119>.
34. Song T, Park Y, Shamputa IC, Seo S, Lee SY, Jeon HS, Choi H, Lee M, Glynn RJ, Barnes SW, Walker JR, Batalov S, Yusim K, Feng S, Tung CS, Theiler J, Via LE, Boshoff HIM, Murakami KS, Korber B, Barry CE, Cho SN. 2014. Fitness costs of rifampicin resistance in *Mycobacterium tuberculosis* are amplified under conditions of nutrient starvation and compensated by mutation in the  $\beta'$  subunit of RNA polymerase. *Mol Microbiol* 91:1106–1119. <https://doi.org/10.1111/mmi.12520>.
35. Vogwill T, Kojadinovic M, MacLean RC. 2016. Epistasis between antibiotic resistance mutations and genetic background shape the fitness effect of resistance across species of *Pseudomonas*. *Proc Biol Sci* 283:20160151. <https://doi.org/10.1098/rspb.2016.0151>.
36. Castro RAD, Ross A, Kamwela L, Reinhard M, Loiseau C, Feldmann J, Borrell S, Trauner A, Gagneux S. 2020. The genetic background modulates the evolution of fluoroquinolone-resistance in *Mycobacterium tuberculosis*. *Mol Biol Evol* 37:195–207. <https://doi.org/10.1093/molbev/msz214>.
37. Huang CC, Tchetgen ET, Becerra MC, Cohen T, Hughes KC, Zhang Z, Calderon R, Yataco R, Contreras C, Galea J, Lecca L, Murray M. 2014. The effect of HIV-related immunosuppression on the risk of tuberculosis transmission to household contacts. *Clin Infect Dis* 58:765–774. <https://doi.org/10.1093/cid/cit948>.