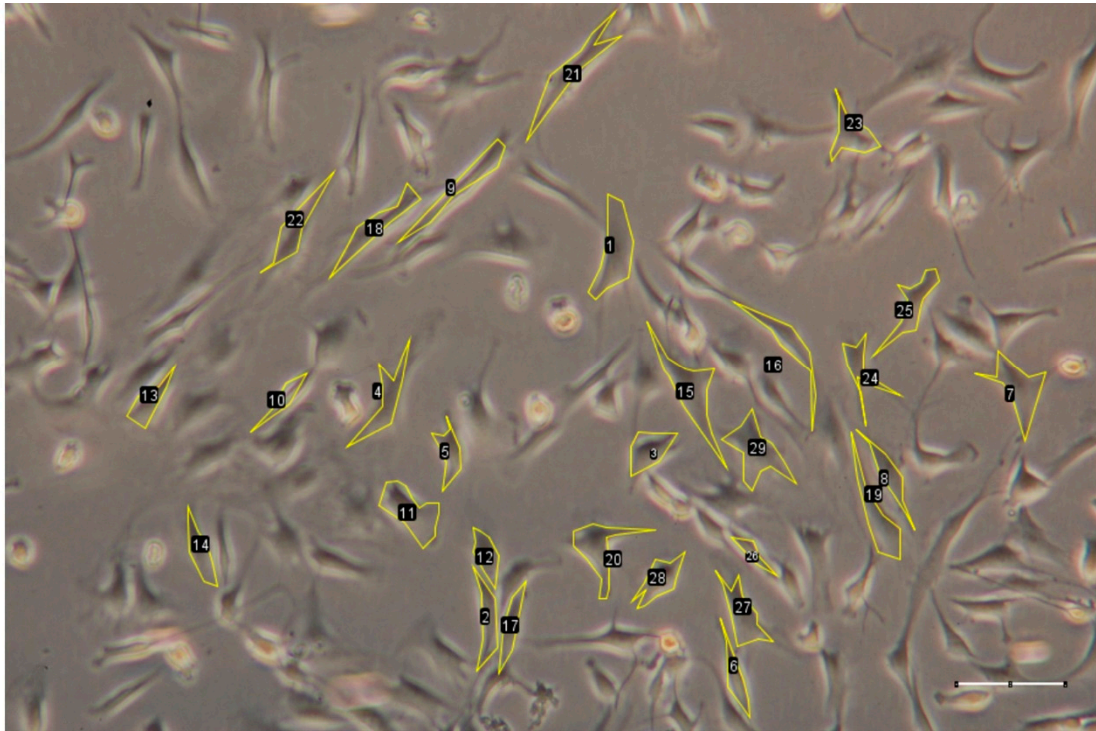


**Supplementary Figure S1. Flow cytometric isolation of Tie2+NPC** (a) Exclusion of debris on a plot of SSC-A (side scatter area) vs FSC-H (forward scatter height). (b) Gating on single cells and excluding clumps on a plot of FSC-A (forward scatter area) vs FSC-H (forward scatter height). (c) Unstained control with DAPI exclusion gate on a plot of SSC-A vs DAPI. “Live” represents DAPI exclusion gate. (d) Gating for viable cells by DAPI exclusion on a plot of SSC-A vs DAPI. (e) Isotype control with Tie2+ gate on a plot of SSC-A vs PE (f) Sample stained with PE-conjugated anti-Tie2 antibody gated for Tie+ cells on a plot of SSC-A vs PE.



**Supplementary Figure S2. A representative image of the cell shapes of the NPCs cultured on “classic” surface.** The segmentation of the cells was defined manually and the morphology of cells was then quantified by ImageJ v1.53c. Scale bar = 100  $\mu\text{m}$ .