





The gas production of 14 species from comet 67P/Churyumov–Gerasimenko based on DFMS/COPS data from 2014 to 2016

Matthias Lauter ¹★, Tobias Kramer ^{1,2}, Martin Rubin ³ and Kathrin Altwegg ³

¹Zuse Institute Berlin, D-14195 Berlin, Germany

²Department of Physics, Harvard University, Cambridge, MA 02138, USA

³Physikalisches Institut, University of Bern, CH-3012 Bern, Switzerland

Accepted 2020 August 26. Received 2020 August 24; in original form 2020 May 4

ABSTRACT

The coma of comet 67P/Churyumov–Gerasimenko has been probed by the *Rosetta* spacecraft and shows a variety of different molecules. The ROSINA COmet Pressure Sensor and the Double Focusing Mass Spectrometer provide *in situ* densities for many volatile compounds including the 14 gas species H₂O, CO₂, CO, H₂S, O₂, C₂H₆, CH₃OH, H₂CO, CH₄, NH₃, HCN, C₂H₅OH, OCS, and CS₂. We fit the observed densities during the entire comet mission between 2014 August and 2016 September to an inverse coma model. We retrieve surface emissions on a cometary shape with 3996 triangular elements for 50 separated time intervals. For each gas, we derive systematic error bounds and report the temporal evolution of the production, peak production, and the time-integrated total production. We discuss the production for the two lobes of the nucleus and for the Northern and Southern hemispheres. Moreover, we provide a comparison of the gas production with the seasonal illumination.

Key words: methods: data analysis – comets: individual: 67P/Churyumov–Gerasimenko.

1 INTRODUCTION

Comet 67P/Churyumov–Gerasimenko (67P/C-G) was the main rendezvous target of the European Space Agency *Rosetta* mission during one apparition with perihelion occurring on 2015 August 13. The nucleus of comets consists of a mixture of frozen volatiles and of refractory components including solid organic matter (Bardyn et al. 2017; Fray et al. 2016). *Rosetta* provided continuous *in situ* and remote sensing observational data from inside the cometary coma for more than two years; see Altwegg, Balsiger & Fuselier (2019) and Keller & Kuhrt (2020). The main tools on the *Rosetta* spacecraft for examining gas and dust included the instruments ROSINA (Rosetta Orbiter Spectrometer for Ion and Neutral Analysis; Balsiger et al. 2007), VIRTIS (Visible and InfraRed Thermal Imaging Spectrometer; Coradini et al. 2007), MIRO (Microwave Instrument for the Rosetta Orbiter; Gulkis et al. 2007), ALICE (an ultraviolet imaging spectrograph; Stern et al. 2007), GIADA (The Grain Impact Analyser and Dust Accumulator; Colangeli et al. 2007), COSIMA (COmetary Secondary Ion Mass Analyzer; Kissel et al. 2007), and OSIRIS (Optical, Spectroscopic, and Infrared Remote Imaging System; Keller et al. 2007). The density and composition of the cometary gas has been probed *in situ* by ROSINA based on the three sensors COPS (COmet Pressure Sensor), DFMS (Double Focusing Mass Spectrometer), and RTOF (Reflectron-type Time Of Flight). In addition, the coma was analysed with the remote sensing instruments MIRO (Biver et al. 2019) and VIRTIS (Bockelee-Morvan

et al. 2016). Hansen et al. (2016) compiled the H₂O production obtained from these various instruments and others.

An important quantity to study is the emission rate from the nucleus. To establish a relation between *in situ* gas densities and the (sub)surface sublimation (and thus the ice composition) requires a suitable model to trace the gas release from the nucleus into the coma. The analytical model suggested by Haser (1957) provides a first estimate for the coma density under the assumption of a uniformly gas-emitting spherical nucleus. More complex coma models are described by Tenishev, Combi & Davidsson (2008), Fougere et al. (2013), Bieler et al. (2015), and Combi et al. (2020). These models are based on gas kinetic equations and have to incorporate the boundary conditions at the ice–gas interface, in addition to the solar illumination, the non-spherical shape of the nucleus, and the local surface properties. Currently, no complete understanding of the ice–gas interface exists and most advanced coma models predict the spatial and temporal evolution of the coma solely based on the shape of the nucleus and the notion of an active surface area in conjunction with the local illumination; see, for instance, Keller et al. (2015). For comet 67P/C-G, several authors fit observational data to coma models to extract production data. An independent extraction of the gas production is provided by the analysis of the the rotational state and the non-gravitational acceleration of the nucleus; see Kramer et al. (2019), Kramer & Lauter (2019), Attree et al. (2019), and Mottola et al. (2020).

The coma of comet 67P/C-G is dominated by three major gas species (H₂O, CO₂, and CO), which comprise 90 per cent of the total gas production (see Table 1). Coma densities of the major gas species are derived by Bieler et al. (2015), Bockelee-Morvan et al. (2015), Fink et al. (2016), Marshall et al. (2017), Biver et al. (2019), Lauter

* E-mail: laeuter@zib.de

Table 1. Time-integrated productions P_s for all species s in equation (1) for the complete *Rosetta* mission time ranging from -377 d before to 390 d after perihelion.

s	P_s (kg)	P_s (molecules)	$P_s/P_{\text{H}_2\text{O}}$
H ₂ O	$[4.0 \pm 0.6] \times 10^9$	$[1.3 \pm 0.2] \times 10^{35}$	1
CO ₂	$[7.2 \pm 1.8] \times 10^8$	$[9.8 \pm 2.5] \times 10^{33}$	7×10^{-2}
CO	$[1.9 \pm 0.4] \times 10^8$	$[4.0 \pm 0.8] \times 10^{33}$	3×10^{-2}
H ₂ S	$[1.3 \pm 0.4] \times 10^8$	$[2.3 \pm 0.8] \times 10^{33}$	2×10^{-2}
O ₂	$[1.6 \pm 0.3] \times 10^8$	$[3.0 \pm 0.5] \times 10^{33}$	2×10^{-2}
C ₂ H ₆	$[5.5 \pm 1.2] \times 10^7$	$[1.1 \pm 0.2] \times 10^{33}$	8×10^{-3}
CH ₃ OH	$[3.7 \pm 0.8] \times 10^7$	$[7.0 \pm 1.4] \times 10^{32}$	5×10^{-3}
H ₂ CO	$[3.1 \pm 0.6] \times 10^7$	$[6.1 \pm 1.3] \times 10^{32}$	5×10^{-3}
CH ₄	$[1.5 \pm 0.3] \times 10^7$	$[5.6 \pm 1.2] \times 10^{32}$	4×10^{-3}
NH ₃	$[1.5 \pm 0.4] \times 10^7$	$[5.3 \pm 1.4] \times 10^{32}$	4×10^{-3}
HCN	$[1.1 \pm 0.2] \times 10^7$	$[2.4 \pm 0.5] \times 10^{32}$	2×10^{-3}
C ₂ H ₅ OH	$[1.3 \pm 0.3] \times 10^7$	$[1.7 \pm 0.4] \times 10^{32}$	1×10^{-3}
OCS	$[9.6 \pm 2.1] \times 10^6$	$[9.7 \pm 2.1] \times 10^{31}$	7×10^{-4}
CS ₂	$[3.2 \pm 0.6] \times 10^6$	$[2.5 \pm 0.5] \times 10^{31}$	2×10^{-4}

Notes. The production relative to water is based on the number of molecules. Data uncertainties are discussed in Section 3.

et al. (2019), and Combi et al. (2020). Areas of different relative abundances for these gases on the surface are analysed by Hassig et al. (2015) and Hoang et al. (2017) using nadir mappings to an idealized spherical surface. Fougere et al. (2016a,b), and Hansen et al. (2016) fit 25 coefficients of a fourth-order spherical harmonics expansion to locate gas activity. Zakharov et al. (2018) and Marschall et al. (2017) consider illumination conditions, the latter additionally surface properties, to further constrain the surface activity. Kramer et al. (2017) and Lauter et al. (2019) carry out a surface localization of gas production on triangular shape models with different resolutions and reported strong correlations of enhanced surface emitters with reported dust outbreaks around perihelion by Vincent et al. (2016).

A detailed inventory of the cometary coma requires to look beyond the three major species. In the absence of chemical reactions in the gas phase, all coma measurements at typical *Rosetta* distances from the nucleus are linked to the molecular abundances of the ices and grains on the nucleus. The fingerprint of an extended set of minor volatiles in the coma provides insights in the formation processes of the early Solar system; see A’Hearn et al. (2012). While the three major species reflect mainly the physical conditions under which comets formed (e.g. temperature and location), minor species reflect the chemical complexity of the native environment of comets. The correlation between the sublimation of major and minor species is complex, as the minor species are most likely embedded in a matrix of major species. Therefore, minor species do not sublimate at their own sublimation temperature but will be released with their matrix. Following the respective coma composition locally over the cometary orbit around the sun allows one to understand the mixture of species in the cometary ice and their release. Remote sensing observations of comets are restricted to relatively short time periods due to signal strengths, geometrical limits, and availability of antennas. In order to be able to compare comets, it is therefore important to understand the different outgassing patterns for the species over a large range of heliocentric distances. The recent observation of interstellar comets requires to establish an inventory of volatiles and production rates to detect novel signatures. For the interstellar comet 2I/Borisov, Bodewits et al. (2020) and Cordiner et al. (2020) report a notably high abundance relative to water for CO. For a number of different comets, Biver et al. (1997, 1999, 2002, 2018, 2019) and Enzian (1999) study the temporal evolution of production rates close to perihelion. For comet 67P/C-G, Luspay-Kuti et al. (2015)

report correlations of minor species with either H₂O or CO₂. From the varying time evolution of the hemispheric gas production also among minor species, Bockelee-Morvan et al. (2016) conclude the existence of regional volatile-poor surface layers. Calmonte et al. (2016) analyse sulphur containing molecules released from 67P/C-G, Rubin et al. (2018) detect several noble gases.

For the major gas species (water H₂O, carbon dioxide CO₂, and carbon monoxide CO) and minor gas species (hydrogen sulfide H₂S, oxygen O₂, ethane C₂H₆, methanol CH₃OH, formaldehyde H₂CO, methane CH₄, ammonia NH₃, hydrogen cyanide HCN, ethanol C₂H₅OH, carbonyl sulfide OCS, carbon disulfide CS₂), we derive the time evolution of the production rates and emission regions. The same DFMS data set is analysed for a short time period between 2015 May 22 and June 2 in Rubin et al. (2019) and references therein. Our analysis spans almost the whole *Rosetta* mission to 67P/C-G between 2014 and 2016. Section 2 introduces our derivation of surface-emission rates based on the shape model of comet 67P/C-G consisting of 3996 triangles. We process all COPS/DFMS data for 50 separate time intervals and apply a 2σ criterion to mask data outliers. In Section 3, we present the temporal evolution of 14 volatiles during the spacecraft mission and obtain time-integrated productions and peak productions. We discuss and compare our results to other reported observations and productions in Section 4, followed by the conclusions in Section 5.

2 DATA PROCESSING AND MODEL SETUP

Our data analysis combines an analytical model for the expansion of a collisionless gas into space with an optimization procedure to constrain a large number of emission sources (see Kramer et al. 2017; Lauter et al. 2019)). The measured *in situ* gas density is the superposition of the gas expansion from separated gas sources placed on a triangular mesh of the cometary surface. For the gas expansion, the model assumes the gas release from the cometary surface, although sublimation processes occur in the sub-surface layers of the soil column; see Skorov et al. (2020). To limit the number of unknowns, the analysis in Sections 3 and 4 is done on a mesh with $N_E = 3996$ triangular faces with an average diameter of 120 m, derived from the mesh given by Preusker et al. (2017). The resolution of the shape model has only a small influence on the derived production rates, with peak productions changing less than 5 per cent upon switching to a coarser-grained shape model (1024 faces).

Gasc et al. (2017b) detail how the combined data from the two ROSINA instruments COPS and DFMS determines the *in situ* gas densities of the 14 gas species:

$$S = \{\text{H}_2\text{O}, \text{CO}_2, \text{CO}, \text{H}_2\text{S}, \text{O}_2, \text{C}_2\text{H}_6, \text{CH}_3\text{OH}, \text{H}_2\text{CO}, \text{CH}_4, \text{NH}_3, \text{HCN}, \text{C}_2\text{H}_5\text{OH}, \text{OCS}, \text{CS}_2\}. \quad (1)$$

By itself, DFMS data determine relative molecular abundances only and COPS data are required to convert relative densities into absolute ones. We consider all measurements of the gas densities between 2014 August 1 (377 d before perihelion) and 2016 September 5 (390 d after perihelion). With the convention to use negative values for days before perihelion the complete mission interval is denoted by $(-377 \text{ d}, 390 \text{ d})$. The analysis proceeds in $N_I = 50$ separated subintervals,

$$I_1, I_2, \dots, I_{N_I} \subset (-377 \text{ d}, 390 \text{ d}).$$

The subintervals last between 7 and 29 d. Within each subinterval, the sub-spacecraft position samples almost the entire surface of the

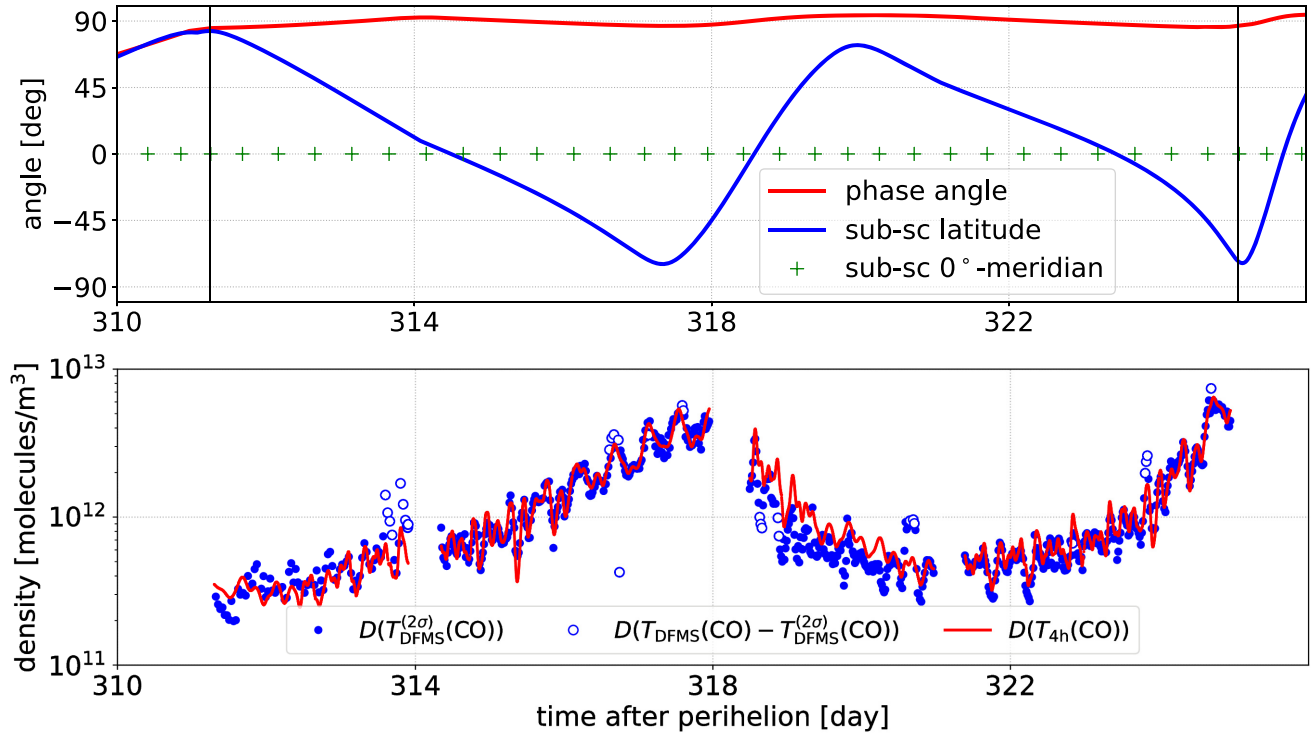


Figure 1. Observing geometry and data reduction for the density probes by the spacecraft within the exemplary interval $I_{45} = (311.3 \text{ d}, 325.1 \text{ d})$. Top panel: phase angle, sub-spacecraft latitude, and 0° -meridian crossings of the spacecraft with respect to the cometary nucleus. Bottom panel: measured CO densities; circles (filled and open) denote COPS/DFMS densities at the times $T_{DFMS}(\text{CO}, I_{45})$. The filled circles marks the COPS/DFMS densities at the times $T_{DFMS}^{(2\sigma)}(\text{CO}, I_{45})$, and the open circles show discarded COPS/DFMS densities due to the 2σ criterion. The red line denotes the linearly interpolated densities at the times $T_{4h}(\text{CO}, I_{45}, T_{DFMS})$ in equation (2).

nucleus. The chosen subinterval duration ensures a limited variation of the heliocentric distance r_h and the subsolar latitude. This allows us to neglect seasonal changes in the sublimation rate within each subinterval. The exemplary subinterval $I_{45} = (311.3 \text{ d}, 325.1 \text{ d})$ is shown in Fig. 1. To constrain the impact of a varying phase angle between *Rosetta* and the nucleus and the diurnal changes in the sublimation rate, we have highlighted all subintervals with *Rosetta* observations around an phase angle of 90° in Section 3. This operational orbit is sometimes referred to as terminator orbit.

The DFMS measurements are conducted less frequently than the COPS ones. The density $\rho_s(t)$ of a gas species $s \in S$ is recorded at times t in $T_{DFMS} = T_{DFMS}(s, I_j)$ within the subinterval I_j . Each species and subinterval contains a distinct set of DFMS measurements,

$$D(T_{DFMS}) = \{(t, \rho_s(t)) \mid t \in T_{DFMS}\}.$$

The data set encompassing all species and subintervals contains 218 765 entries. Only for a small number of species and subintervals no data are available. For the exemplary species CO in the interval I_{45} , the data points are shown in Fig. 1. Due to spacecraft maneuvers, the ROSINA sensors experience a standby or off mode. To maintain a sufficient surface resolution for mapping the DFMS data to gas emitters close to the surface requires to interpolate between neighbouring DFMS data points to times when COPS data is available, as discussed by Lauter et al. (2019). During the entire comet mission, COPS measurements of the gas density are available at about 10^6 spacecraft positions, enumerated by the corresponding observation times from the set T_{COPS} . The number of DFMS data points is increased by a linear interpolation of the densities $\rho_s(t)$ to an extended set of times $T_{4h} = T_{4h}(s, I_j, T_{DFMS})$, as described in equation (1) in Lauter et al.

(2019). The set T_{4h} consists of only those times $t \in T_{COPS} \cap I_j$ that are enclosed in a time interval (t_l, t_r) with a length of at most 4 h and with DFMS times $t_l, t_r \in T_{DFMS}$. For each gas species $s \in S$ in each time interval I_j , linear interpolation yields the extended data set:

$$D(T_{4h}) = \{(t, \rho_s(t)) \mid t \in T_{4h}\}. \quad (2)$$

The number of data points depends on the species and the interval and varies from 4752 points for CH_3OH to 19 358 points for H_2O . Fig. 1 shows the extended data set for CO in the interval I_{45} .

According to equations (1) and (5) in Kramer et al. (2017), the analytic gas model describes the density,

$$\rho_{s,j}(\mathbf{x}_{sc}) = \sum_{i=1}^{N_E} \text{occ}_i(\mathbf{x}_{sc}) \rho_{s,i,j}(\mathbf{x}_{sc}),$$

at the spacecraft position \mathbf{x}_{sc} as a superposition of contributions $\rho_{s,i,j}$ for each species s in each interval I_j with the occultation function occ_i . The gas density of Narasimha (1962) reads

$$\rho_{s,i,j}(\mathbf{x}_{sc}) = \frac{U_0^2 \cos \theta}{u_{s,0} \pi r^2} |E_i| \dot{\rho}_{s,i,j} \exp(-U_0^2 \sin^2 \theta)$$

for a point source of a collisionless gas on a surface element E_i with its centre \mathbf{b}_i (local position vector $\mathbf{r} = \mathbf{x}_{sc} - \mathbf{b}_i$), the outward normal vector \mathbf{v}_i and the angle θ such that $\cos \theta = \mathbf{r}/|\mathbf{r}| \cdot \mathbf{v}_i$. The ratio between the normal component $u_{s,0}$ and the lateral one of the outflow velocity is the parameter U_0 , which is taken to $U_0 = 3$ as in Lauter et al. (2019). The surface emission rate $\dot{\rho}_{s,i,j}$ is the result of a parameter fit based on system, \mathbf{v}_i

$$\rho_{s,i}(\mathbf{x}_{sc}(t)) = \rho, \quad (3)$$

using the measurements (t, ρ) in the data set $D(T_{4h})$. Equation (7) in Kramer et al. (2017) yields the relative l^2 -error for the fit. $\hat{\rho}_{s,i,j}$ is constant within the entire subinterval I_j , takes the value of the diurnally averaged gas production and depends on the outflow velocity $u_{s,0}$. The velocity $u_{s,0}$ is a function of heliocentric distance since we use the parametrization for water given by Hansen et al. (2016), which resembles the expansion velocity derived from molecular lines by Biver et al. (2019) of different species. In particular, within each interval, the velocity for the molecules of all species is assumed to be the same. Another option is to consider decoupled gases as in Lauter et al. (2019), where $u_{s,0}$ is scaled by the square root of the molecular mass relative to water. For the latter case, the density values have to be re-scaled for each species by a constant factor that varies from ≈ 0.5 for CS_2 to ≈ 1.1 for CH_4 .

The data set in equation (2) was the basis for Lauter et al. (2019) to analyse major gas species. To extend the previous analysis of COPS/DFMS data to 14 species, we refine the data processing. Several minor species are affected by additional noise due to small concentrations, resulting in significant fit errors or lack of convergence for some intervals. We detect outliers in the data set by applying a 2σ criterion for the l^2 -error functional and discard any data outside this bound. The standard deviation is obtained for the difference between the evaluation of our coma model density $m_s(t)$ at the spacecraft distance $d_{sc}(t)$ and the times $t \in T_{DFMS}$, and the measured data. The rationale behind this selection is to discard sudden drops and outbursts in the data from the overall repetitive outgassing behaviour of comet 67P/C-G. This is also reflected in diurnally repeating dust pattern; see Kramer & Noack (2015) and Kramer et al. (2018). Formally, the squared standard deviation $\sigma_{s,j}$ for the distance-weighted density $d_{sc}^2 \rho_s$ is given by

$$\sigma_{s,j}^2 = \frac{1}{|T_{DFMS}|} \sum_{t \in T_{DFMS}} (d_{sc}^2(t) |\rho_s(t) - m_s(t)|)^2$$

in the interval I_j . We define a reduced set of times satisfying the 2σ criterion by

$$T_{DFMS}^{(2\sigma)} = \{t \in T_{DFMS} \mid d_{sc}^2 |\rho_s(t) - m_s(t)| < 2\sigma_{s,j}\}.$$

This yields the reduced density set $D(T_{DFMS}^{(2\sigma)}) = \{(t, \rho_s(t)) \mid t \in T_{DFMS}^{(2\sigma)}\}$ for DFMS data, for which we re-run the model fit. For all species and intervals together, these data sets contain 187 068 entries corresponding to 14 per cent less data. The filled circles in Fig. 1 represent this reduced data set in the exemplary interval I_{45} . The 4h criterion including linear interpolation for the densities as above yields the increased number of time points $T_{4h}^{(2\sigma)} = T_{4h}^{(2\sigma)}(s, I_j, T_{DFMS}^{(2\sigma)})$ with the extended data set,

$$D(T_{4h}^{(2\sigma)}) = \{(t, \rho_s(t)) \mid t \in T_{4h}^{(2\sigma)}\}, \quad (4)$$

for each gas species s in each interval I_j . The number of data points ranges from 4443 points for CO to 19 212 points for H_2O . The comparison with the number of points from equation (2) shows that the 2σ criterion data set does only remove few points. The surface emission rates $\hat{\rho}_{s,i,j}$ derived from the data complying with equation (4) are used for the subsequent analysis in Section 3. For each species, the uncertainty of the retrieved gas production due to the fit error (in equation 3) with respect to the measured densities) is estimated by comparing production changes and fit errors for two separated model runs realized with 2σ and 8σ data. For the 2σ data, the average fit error of about 20 per cent results in production errors of about 7 per cent. In Section 3, we detail how the fit uncertainty contributes to the overall uncertainty estimation.

Table 2. Peak productions $\max Q_s = \max_j Q_{s,j}$ for all species s in equation (1).

s	$\max Q_s$ (molecules s^{-1})	$\max Q_s / \max Q_{H_2O}$
H_2O	$[1.85 \pm 0.03] \times 10^{28}$	1
CO_2	$[1.58 \pm 0.07] \times 10^{27}$	9×10^{-2}
CO	$[5.9 \pm 1.7] \times 10^{26}$	3×10^{-2}
H_2S	$[4.4 \pm 0.5] \times 10^{26}$	2×10^{-2}
O_2	$[3.6 \pm 0.4] \times 10^{26}$	2×10^{-2}
C_2H_6	$[1.58 \pm 0.05] \times 10^{26}$	9×10^{-3}
CH_3OH	$[1.14 \pm 0.05] \times 10^{26}$	6×10^{-3}
H_2CO	$[9.7 \pm 0.9] \times 10^{25}$	5×10^{-3}
CH ₄	$[8.2 \pm 1.2] \times 10^{25}$	4×10^{-3}
NH ₃	$[1.0 \pm 0.1] \times 10^{26}$	5×10^{-3}
HCN	$[3.7 \pm 0.3] \times 10^{25}$	2×10^{-3}
C_2H_5OH	$[3.0 \pm 0.2] \times 10^{25}$	2×10^{-3}
OCS	$[1.58 \pm 0.08] \times 10^{25}$	9×10^{-4}
CS_2	$[4.56 \pm 0.07] \times 10^{24}$	2×10^{-4}

Notes. For each species s , the maximum value appears in one interval I_{25} ranging from 17 to 27 d after perihelion. The abundance relative to water is evaluated for interval I_{25} . Data uncertainties are discussed in Section 3.

The main computational effort for the inverse coma model is located in two code sections. First, at each considered spacecraft position (associated with a measured density), the evaluation of the analytical model requires the complete list of directly visible surface elements. Secondly, the numerical solution of the parameter fit in equation (3) is based on a standard singular value decomposition. Each of the 14 gases and each of the 50 time intervals I_1, I_2, \dots, I_{N_I} is assigned to one MPI (message passing interface) process. Within each process, both code sections are executed by nine parallel (OpenMP) threads. For one gas in one interval, the analysis takes 90 min, which yields approximately 100 node hours for the complete analysis on the HLRN-IV supercomputer (96 cores per node).

3 EVOLUTION OF THE GAS PRODUCTION

Based on the surface emission rates in Section 2, we evaluate the time-integrated productions P_s in Table 1 and peak productions $\max_j Q_{s,j}$ in Table 2. The given values are affected by several systematic uncertainties. Rubin et al. (2019) estimate 30 per cent for the uncertainty of relative abundances (DFMS data) including the effects of sensitivity calibration, detector gain, and fitting errors where applicable. Our method introduces further uncertainties with respect to the fit error (see Section 2) and a partially reduced surface coverage of the spacecraft trajectory. Time intervals suffer from limited surface coverage and thus encompass areas with an unassigned production rate (not-seen surface elements). To constrain the unknown surface production originating from these areas, we provide a lower and an upper estimate of the production in the time interval I_j . The lower bound is given by setting the unknown surface emission rate to zero, and the upper bound is provided by the maximum value of the production rate from the same surface elements within the neighbouring intervals I_{j-1} and I_{j+1} . If a lack of surface coverage results in an unassigned production value on one element for I_{j-1} , I_j , and I_{j+1} , then the production is set to zero. These estimates for the gas production with respect to limited surface coverage simplify the analysis compared to Lauter et al. (2019), where we additionally considered a linear interpolation across additional intervals. Our overall uncertainty estimation given in Tables 1 and 2, and the figures assume uncorrelated uncertainties for the fit error and the limited surface coverage. This applies to

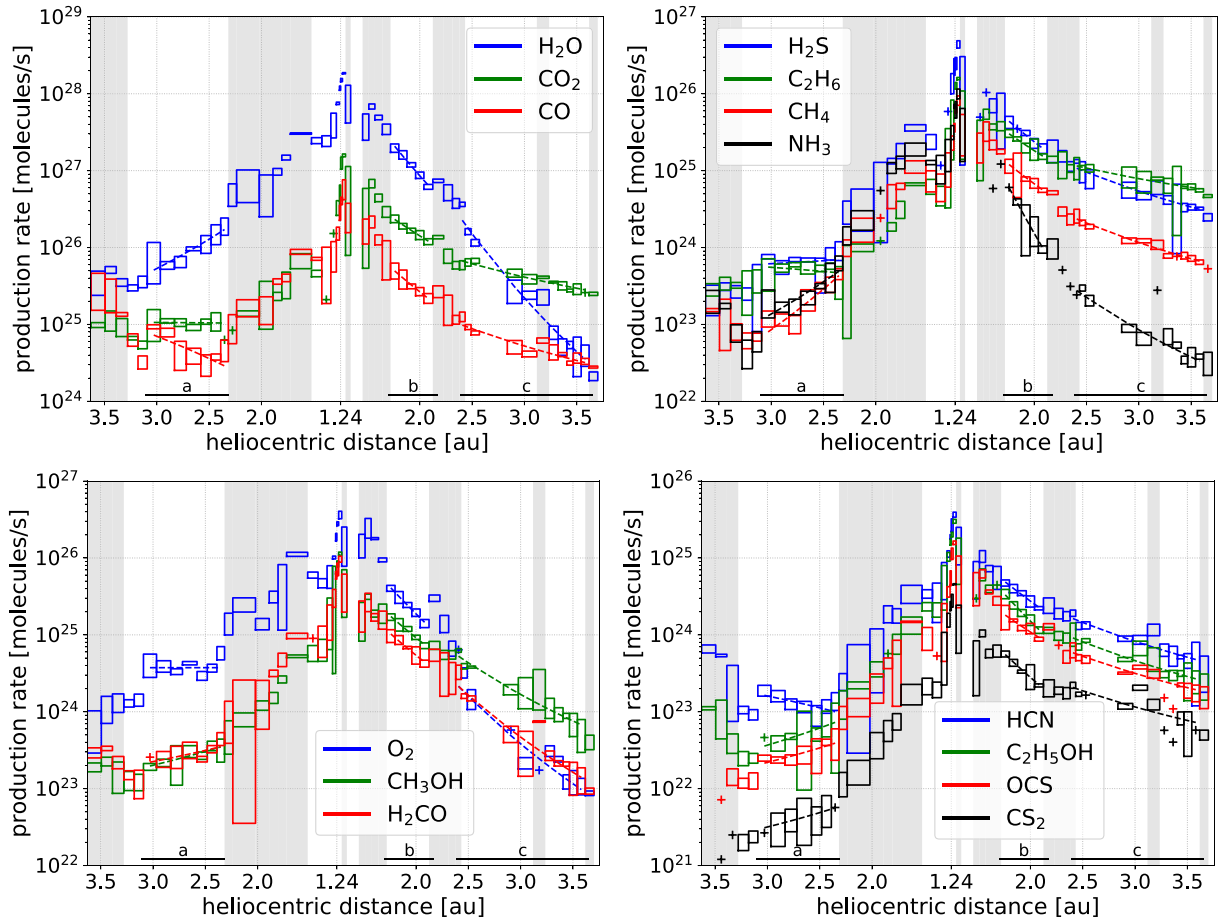


Figure 2. Production rates $Q_{s,j}$ for all species s in equation (1) as a function of heliocentric distance r_h of comet 67P/C-G. The boxes indicate the uncertainties discussed in Section 3. Without available uncertainty estimation, a + marker is used. Grey coloured intervals denote phase angles differing from 90° , indicating non-terminator orbits. The dashed lines represent the best-fitting power law in the distinct intervals I_a , I_b , and I_c , indicated by the horizontal bars and tabulated in Table 3.

the time-integrated productions P_s and also in the peak productions $\max_j Q_{s,j}$.

The temporal evolution of all 14 production rates $Q_{s,j}$ is shown in Fig. 2. To further reduce sampling errors, we have preferentially chosen intervals with terminator orbits. Terminator orbits encompass typically morning and evening illumination conditions and match with the assumption of mainly observing gas emissions representing diurnally averaged production rates. Intervals deviating from terminator orbits are marked in grey to reveal possible systematic errors related to a varying phase angle, in particular to a more illuminated nucleus. Almost all, except two, grey intervals correspond to average phase angles smaller than 90° .

The global production curve agrees with the analysis of the non-gravitational acceleration (Kramer & Lauter 2019) and the change of the rotation axis (Kramer et al. 2019). We discern distinct patterns in the evolution of the production rates. Despite the overall increasing solar illumination in the inbound orbital arc between -290 and -180 d (heliocentric distances between 3.1 and 2.3 AU), the gas production for some gases stagnates or even decreases. For all species, the production increases toward perihelion and culminates in a pronounced peak in our interval I_{25} ranging from 17 to 27 d after perihelion; see Table 2. Further subdivision or interleaving of our subintervals is not possible without limiting the surface coverage due to the characteristics of the subspacecraft latitude. Based on

COPS/DFMS data alone, it is not possible to further constrain the day of peak production. An independent analysis based on the non-gravitational acceleration of the nucleus (fig. 3 in Kramer & Lauter 2019) puts the maximum production around 0 – 20 d after perihelion. The distinct peak around perihelion does not allow one to fit all observations to a single power law. For outbound heliocentric distances exceeding ≈ 2.5 AU, we find two groups of gases with markedly different production decreases.

To classify the evolution of the production rates with heliocentric distance r_h , we fit the production to a power law, $Q_{s,j} \sim r_h^\alpha$. Due to the sharp peak production and the sensitivity for chosen fit periods, various authors obtain differing power-law exponents. Hansen et al. (2016) introduced a fit with a discontinuous jump at perihelion, while Biver et al. (2019) employed different fit parameters that changed at $r_h = 1.52$ AU outbound. For each of the three time intervals I_a , I_b , and I_c in Table 3, we determine the two parameters C and α to fit the function Cr_h^α to the gas production; see Table 4. The fit is performed with respect to the mean production values using the method of least squares. All chosen intervals correspond to spacecraft terminator orbits to ensure comparable illumination conditions across the data points. The vast majority of fits yields negative exponents α corresponding to the increasing production with increasing solar irradiation. CO and HCN are two exceptions within the inbound interval I_a . This inversion of the production rate with respect to the

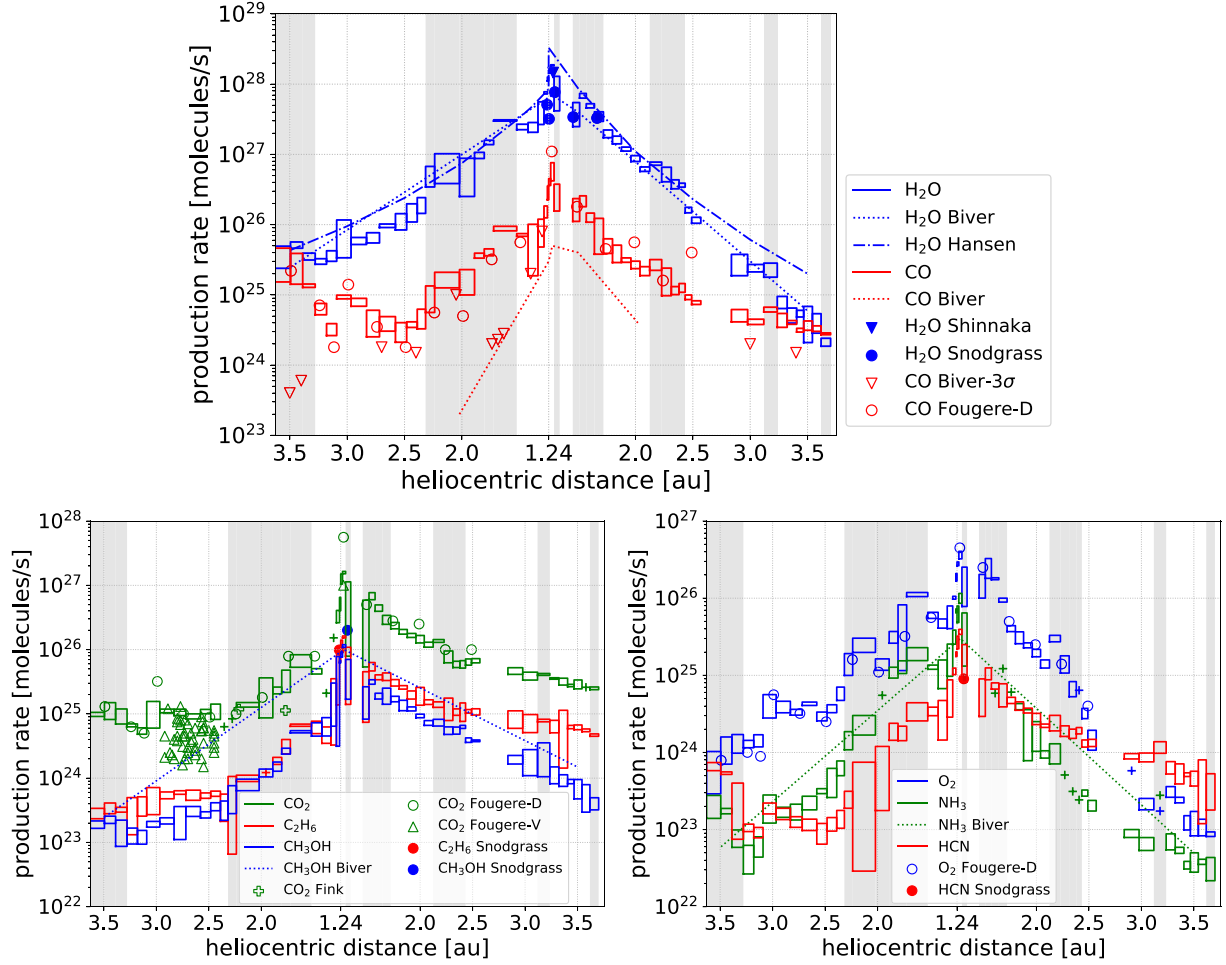


Figure 3. Production rates $Q_{s,j}$, the same data as in Fig. 2. Top panel: species $s = \text{H}_2\text{O}$, CO. Bottom left-hand panel: species $s = \text{CO}_2$, C_2H_6 , CH_3OH . Bottom right-hand panel: species $s = \text{O}_2$, NH_3 , HCN. Comparison to the data by Biver et al. (2019), Snodgrass et al. (2017), Shinnaka et al. (2017), Hansen et al. (2016), Fougere et al. (2016a,b) (D – DFMS data, V – VIRTIS data), and Fink et al. (2016).

Table 3. Definitions for the time intervals I_a , I_b , and I_c with respect to days after perihelion, heliocentric distances r_h , and months.

Interval	r_h (AU)	Month	
I_a	(−290 d, −180 d)	3.1–2.3	11/2014–02/2015
I_b	(100 d, 160 d)	1.7–2.2	11/2015–01/2016
I_c	(190 d, 380 d)	2.4–3.6	02/2016–08/2016

received radiation is clearly visible in Fig. 2. CO_2 , H_2S , O_2 , and C_2H_6 remain nearly constant at that time. Fougere et al. (2016a), Combi et al. (2020), and the 3σ points for CO of Biver et al. (2019) in their fig. 17 observe a similar inversion for CO; see Fig. 3. For comet C/1995 O1 Hale–Bopp, Biver et al. (2002) report increasing CO and stagnating HCN productions in the same inbound heliocentric distance range from 3 to 2 AU. The explanation by Enzian (1999) focused on interacting sublimations of two different gas species. For CO_2 , CO, and HCN, the inversion is even more pronounced on the Northern hemisphere; see Table 5. In contrast, O_2 , H_2S , and C_2H_6 are less affected by this trend of differences between both hemispheres.

For H_2O , O_2 , H_2S , CH_4 , and NH_3 in I_c , our power-law exponents closely agree with Gasc et al. (2017a), considered for Northern and Southern hemisphere separately. Looking at the longer term trend after perihelion in I_c we discern two groups of volatiles, the CO_2

Table 4. Exponent α of the fitted power law $r_h^\alpha \sim Q_{s,j}$ separate for each of the intervals I_a , I_b , and I_c in Table 3.

s	In I_a	In I_b	In I_c	Group
	3.1–2.3 AU	1.7–2.2 AU	2.4–3.6 AU	
H_2O	−5.3	−6.5	−9.5	H_2O
CO_2	0.1	−3.6	−2.0	CO_2
CO	4.0	−4.6	−2.6	CO_2
H_2S	−0.5	−4.5	−2.8	CO_2
O_2	0.0	−5.7	−7.1	H_2O
C_2H_6	0.8	−3.7	−1.6	CO_2
CH_3OH	−2.5	−4.7	−4.7	H_2O
H_2CO	−2.0	−4.7	−6.2	H_2O
CH_4	−7.4	−4.3	−2.9	CO_2
NH_3	−5.8	−10.1	−4.8	H_2O
HCN	2.1	−4.2	−2.8	CO_2
$\text{C}_2\text{H}_5\text{OH}$	−3.1	−5.8	−2.8	CO_2
OCS	−2.6	−3.7	−2.5	CO_2
CS_2	−2.6	−5.0	−2.4	CO_2

Note. The outbound exponents for I_c define the CO_2 group and H_2O group; see Section 3.

Table 5. Exponent α of the fitted power law $r_h^\alpha \sim Q_{s,j}$ within the inbound interval I_a with respect to areas of the cometary surface: A_N – Northern hemisphere, A_S – Southern hemisphere, small lobe, and big lobe.

s	A_N	A_S	Small lobe	Big lobe
CO ₂	3.7	−1.4	−0.2	0.3
CO	6.0	5.0	3.7	4.2
H ₂ S	−0.2	0.8	−0.5	−0.5
O ₂	0.2	0.6	0.2	−0.1
C ₂ H ₆	0.1	1.9	0.6	0.9
HCN	3.5	3.3	2.4	1.9

group and the H₂O group in Table 4. The CO₂ group is characterized by a slowly decaying production. In interval I_c , CO₂, CO, H₂S, C₂H₆, CH₄, HCN, C₂H₅OH, OCS, and CS₂ show similar exponents $-3 \leq \alpha$. This is in contrast to the behaviour in interval I_b where the gases of the CO₂ group show a steeper decrease. With the exception of C₂H₆ ($\alpha = -1.6$), α ranges between -3 and -2 in interval I_c . The H₂O group of gases, namely H₂O, O₂, CH₃OH, H₂CO, and NH₃, features exponents $\alpha \leq -4.5$ in I_c and points to a non-linear correlation of the observed production and the received radiation. H₂O, O₂, and H₂CO are the only gases having a steeper decay for interval I_c than for interval I_b . The sublimation of H₂O rapidly diminishes towards the end of the spacecraft mission and O₂ might be partially trapped in water ice.

It is instructive to compare the observed production to an idealized production model, where the gas production is directly proportional to the instantaneous solar irradiation, \mathbf{v}_f and \mathbf{v}_{sun} :

$$Q_{s,j}^{\text{rad}}(A) = \frac{c_s}{r_h^2} \sum_{f \subset A} |f| \overline{|\mathbf{v}_f \cdot \mathbf{v}_{\text{sun}}|}. \quad (5)$$

\mathbf{v}_f and \mathbf{v}_{sun} . A denotes an area on the cometary surface consisting of a group of surface elements $f \subset A$, \mathbf{v}_f is the unit outward vector on f , and \mathbf{v}_{sun} is the instantaneous solar direction vector. Diurnal averaging is indicated by the bar. In Fig. 4, we contrast the radiation driven idealized productions with the observed ones. We have chosen the constant c_s such that the idealized production $Q_{s,25}^{\text{rad}}(A_{67P})$ on the complete surface A_{67P} at the interval I_{25} (peak production) accounts for half of the observed peak production. On the Northern hemisphere A_N , the decreasing heliocentric distance is partly compensated by the north–south transition of the subsolar latitude in combination with the complex shape of the nucleus. This effect leads to a smaller slope for $Q_{s,j}^{\text{rad}}(A_N)$ compared to a purely heliocentric distance r_h^{-2} law; see the left-hand panel of Fig. 4. Especially for CO₂, CO, and HCN, the increasing solar irradiation is not in line with the decreasing productions around 3 AU (inbound), neither for the Northern hemisphere nor for the entire surface. The decreased production could be linked to a different surface morphology and composition, where the comet sheds its accumulated dust from the last perihelion; see Schulz et al. (2015). The effect of vertical energy exchange in the surface layer is described in Gundlach, Fulle & Blum (2020) and Fulle, Blum & Rotundi (2019). For the Southern hemisphere A_S , the idealized production $Q_{s,j}^{\text{rad}}(A_S)$ changes faster than r_h^{-2} due to the peculiar shape of the nucleus. Looking at the gases on the right-hand panel of Fig. 4, namely CO₂, CO, H₂S, CH₄, HCN, C₂H₅OH, OCS, and CS₂ (the CO₂ group except C₂H₆), for $r_h > 2$ AU, we find a high correlation between their observed outbound production and the incoming radiation ($\sim Q_{s,j}^{\text{rad}}(A_S)$). The productions of the species in the H₂O group decay much faster after perihelion in the outbound orbital arc and differ from any idealized production $Q_{s,j}^{\text{rad}}(A_S)$ or an r_h^{-2} relation. For the inbound intervals,

the gases of the CO₂ group show reduced gas productions (including inversions as described above) compared to $Q_{s,j}^{\text{rad}}(A_S)$. A separate analysis of the observed production of the small and big lobe does not reveal any differences with respect to the exponents of the production curves; see Table 5 for the exemplary interval I_a .

4 GAS PRODUCTION FOR KNOWN MISSION SEGMENTS

In the literature, there is a large number of reports concerning the gas production of comet 67P/C-G. Our results compare well to known production ranges, especially for major gas species.

Before we discuss the minor species, we look at the peak production for water three weeks after perihelion. Small deviations from Läuter et al. (2019) reflect differences in the choice of time intervals and in the contribution of not-seen surface areas. The water production in the Tables 1 and 2 (time-integrated production $P_{\text{H}_2\text{O}} = [4.0 \pm 0.6] \times 10^9$ kg, peak production $\max_j Q_{\text{H}_2\text{O},j} = [1.85 \pm 0.03] \times 10^{28}$ s^{−1}) is similar to the values reported by other authors as discussed by Läuter et al. (2019). Läuter et al. (2019) already compared $P_{\text{H}_2\text{O}}$ and $\max_j Q_{\text{H}_2\text{O},j}$ to the results of Hansen et al. (2016) (based on COPS data), Marshall et al. (2017) (based on MIRO data), and Shinnaka et al. (2017) (based on hydrogen Ly α data). Our peak water production is bracketed by the value $\approx 0.5 \times 10^{28}$ s^{−1} from Fougere et al. (2016a) for VIRTIS data, 0.8×10^{28} s^{−1} of Biver et al. (2019) for MIRO data, 2.8×10^{28} s^{−1} in Combi et al. (2020) for DFMS data, and $\approx 3.5 \times 10^{28}$ s^{−1} in Fougere et al. (2016a) for DFMS data. Fougere et al. (2016a) discuss possible reasons for this data range. Bertaux et al. (2014) find the peak production 15 d after perihelion for the apparitions 1996, 2002, and 2009 with peak water productions of 1.3×10^{28} , 1.7×10^{28} , and 5.65×10^{27} s^{−1}, respectively. The time-integrated water production 4.9×10^9 kg by Combi et al. (2020) falls close to our uncertainty range. The lower water production based on MIRO data is also notable for the integrated production between 2.42×10^9 and 3.3×10^9 kg in Biver et al. (2019).

Fig. 3 shows the temporal evolution of production rates for eight selected species (H₂O, CO₂, CO, O₂, C₂H₆, CH₃OH, NH₃, and HCN) complemented by the results of other authors. This comparison shows the agreement with the published fits of Biver et al. (2019), Hansen et al. (2016), Combi et al. (2020), and Fougere et al. (2016a,b) in the range of uncertainties discussed by Hansen et al. (2016). Fig. 3 also includes the water production given by Snodgrass et al. (2017) for the end of 2015 July (5.1×10^{27} s^{−1}), which is within our error bounds whereas for the week after perihelion their value 3.2×10^{27} s^{−1} is lower by a factor of 4 compared to our estimation. At later times (2015 September, October, and November), their values are again within our error bounds. Our CO₂ curves resembles the one by Fougere et al. (2016a), also derived from DFMS data, with the exception of the peak production. Our peak CO₂ production given in Table 2 is bracketed by the peak value of VIRTIS data ($\approx 1 \times 10^{27}$ s^{−1}) and the DFMS data ($\approx 6 \times 10^{27}$ s^{−1}) from Fougere et al. (2016a). The CO₂ production between 3 and 2.4 AU inbound derived from VIRTIS data by Fougere et al. (2016b) fluctuates considerably (see Fig. 3), with the higher values agreeing with our results. The $Q_{\text{CO}_2,j}$ value $\approx 1.2 \times 10^{25}$ s^{−1} between 2015 February and April in Fink et al. (2016) (based on VIRTIS data) underestimates our values at that time. CO shows a close relation to the DFMS data in Fougere et al. (2016a), exceptions are their higher values for peak production, at 2.0 AU, and at 2.5 AU. The CO fit of Biver et al. (2019) strongly underestimates our DFMS derived production. However, 7 out of the 13 3σ -limit values reported by Biver et al. (2019) are close to our lower bound

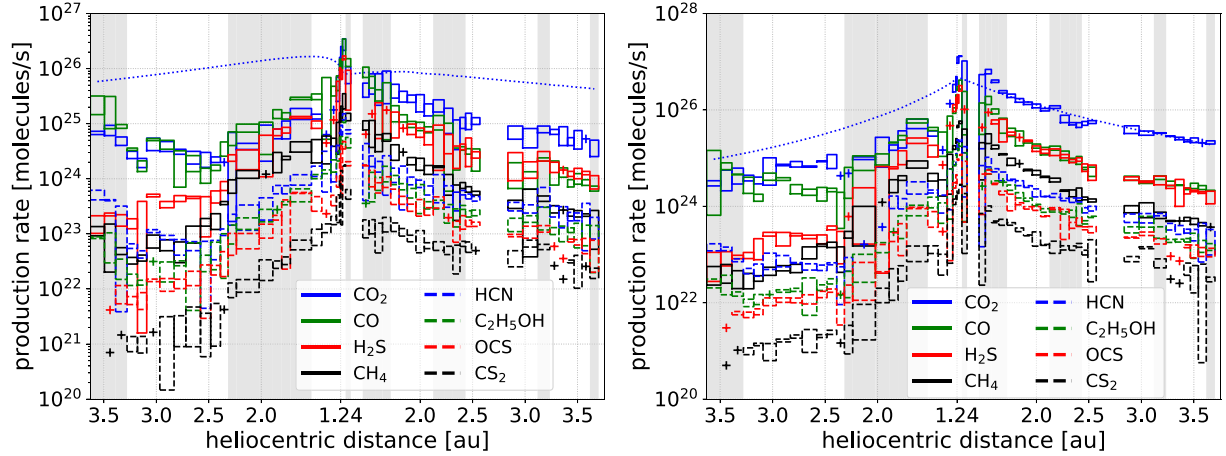


Figure 4. Production rates $Q_{s,j}$ for the species $s = \text{CO}_2, \text{CO}, \text{H}_2\text{S}, \text{CH}_4, \text{HCN}, \text{C}_2\text{H}_5\text{OH}, \text{OCS},$ and CS_2 . Left-hand panel: Northern hemisphere. Right-hand panel: Southern hemisphere. The idealized radiation-driven production in equation (5) is shown with dotted lines.

estimate. The O_2 production derived from the DFMS data by Fougere et al. (2016a) agrees with our values. Their peak production value for CO_2 exceeds our value, while their peak value for O_2 is closer to our result. Out of perihelion, the values are in good agreement. The productions in Snodgrass et al. (2017), $9.9 \times 10^{25} \text{ s}^{-1}$ for C_2H_6 (2015 July), $9 \times 10^{24} \text{ s}^{-1}$ for HCN (2015 September), and $2 \times 10^{26} \text{ s}^{-1}$ for CH_3OH (2015 September) correspond closely to our results. Our productions of NH_3 , inbound and outbound, and of CH_3OH outbound, agree with Biver et al. (2019).

Besides, the confirmation of absolute gas productions, also the linked relative abundances, agree with the results of other authors for various volatiles. The relative abundances with respect to H_2O are shown in Fig. 5. The relative abundances are in agreement (less than 30 per cent deviation) with the DFMS analysis by Rubin et al. (2019) for $\text{CO}, \text{H}_2\text{S}, \text{O}_2, \text{CH}_3\text{OH}, \text{H}_2\text{CO}, \text{NH}_3, \text{HCN}, \text{OCS}$ in 2015 May, by Gasc et al. (2017a) for O_2 in two time intervals, 2016 January–March and June–July, and with fig. 12 in Fougere et al. (2016a) for $\text{CO}_2, \text{CO},$ and O_2 in the time interval 2014 August–2016 February. The CO_2 abundance in 2015 April of ≈ 0.03 by Migliorini et al. (2016) is also reproduced by our analysis. The relative abundances of $\text{CO}_2, \text{CH}_4,$ and OCS during 2015 July/August and 2016 August/September differ from the numbers reported by Bockelee-Morvan et al. (2016), whereas the qualitative evolution of $Q_s/Q_{\text{H}_2\text{O}}$ for $s = \text{CO}, \text{CH}_3\text{OH}, \text{NH}_3$ by Biver et al. (2019) is mirrored by our results. Between 200 d before and after perihelion, CO shows an almost constant ratio with respect to water, CH_3OH strongly increases, and NH_3 decreases. Bockelee-Morvan & Biver (2017) review further abundances relative to water on other comets. In particular, O_2 is strongly linked to the water production with maximum deviations of $Q_{\text{O}_2}/Q_{\text{H}_2\text{O}}$ in the range 0.009–0.07 during the entire mission. Toward the end of the mission, all other relative abundances increase and reflect the steep decrease of the water production.

5 CONCLUSIONS

The sublimation of cometary ices fuels the coma of comet 67P/C-G with a variety of volatiles. Based on COPS/DFMS data from the *Rosetta* spacecraft mission and an inverse gas model, the temporal evolution of the gas production for 14 species has been reconstructed and investigated. This includes the detection of outliers with a 2σ criterion for the χ^2 -error functional. Our results compare well to

previous publications using data from the same and other instruments (COPS, DFMS, MIRO, and VIRTIS). This concerns the time-integrated production for the complete mission, peak production rates for major and minor gas species, especially for water, and relative abundances relative to water.

Increasing solar radiation toward perihelion leads to a long-term trend of increased gas production for all species with a peak production in the time interval between day 17 and day 27 after perihelion. Because the temporal evolution for gas productions on the two lobes does not show significant differences, we do not see an indication for different ice compositions on both lobes. A similar finding has been reported by Schroeder et al. (2019), who found the same deuterium-to-hydrogen ratio in H_2O above the two lobes.

During the outbound times between 190 (2.4 AU) and 380 d (3.6 AU) (interval I_c), the gas production for the Southern hemisphere shows a strong correlation with the solar irradiation for the species $\text{CO}_2, \text{CO}, \text{H}_2\text{S}, \text{CH}_4, \text{HCN}, \text{C}_2\text{H}_5\text{OH}, \text{OCS},$ and CS_2 . This points to an almost linear coupling between solar irradiation and sublimation rate, similar to the assumptions behind Model A in Keller et al. (2015). The power-law exponents obtained by Gasc et al. (2017a) ($-2.18, -1.83,$ and -2.76) for the southern production of $\text{CO}_2, \text{CO},$ and HCN confirm this finding. Complemented by C_2H_6 , this group of species coincides with the CO_2 group, which is given by the property $-3 \leq \alpha$ for the exponent of the global production in the outbound interval I_c .

We observe three phenomena with a more complex relation between solar irradiation and gas production. The first observation concerns the significant production decrease for the gases CO and HCN during the interval I_a between -290 (3.1 AU) and -180 d (2.3 AU) before perihelion and increasing irradiation at the same time. During the same time period, the production for the species $\text{CO}_2, \text{H}_2\text{S}, \text{O}_2,$ and C_2H_6 does not increase. This finding extends the observed decoupling of gas production from solar irradiation by Biver et al. (2002) for CO on comet C/1995 O1 Hale–Bopp. The second point refers to the H_2O group of gases, defined by the exponent $\alpha \leq -4.5$ of the global production in interval I_c . The slopes of the H_2O group are much steeper compared to the irradiation decrease after perihelion. A third result is the analysis of the gas production from the Northern hemisphere. There, we did not find a strong correlation between solar radiation and gas production. This points to differences in the sublimation properties and thus ice decomposition of the Northern and the Southern hemisphere.

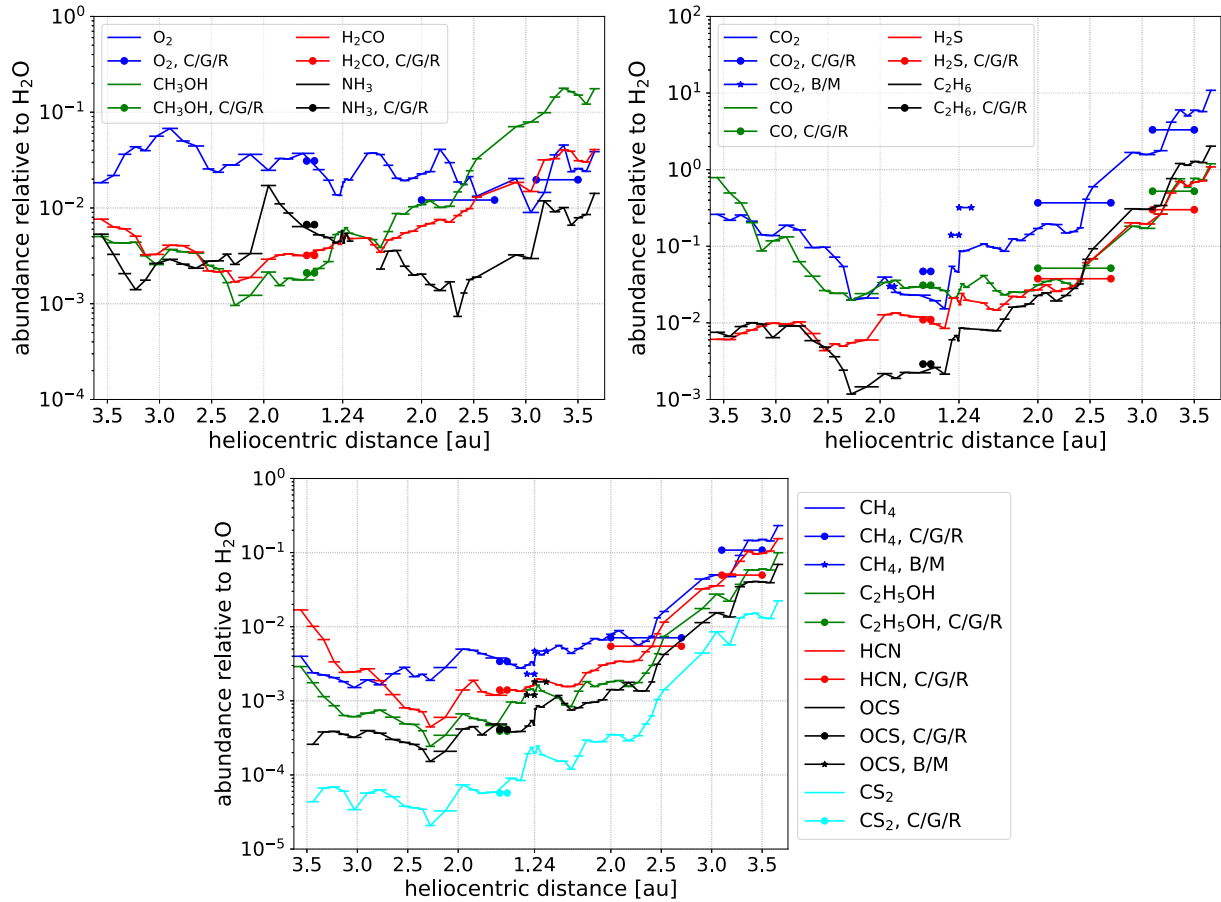


Figure 5. Abundances relative to H_2O . The horizontal lines reflect the values within each interval I_j . The centres of the lines are connected to guide the eye. Data from Calmonte et al. (2016), Gasc et al. (2017a), and Rubin et al. (2019) are denoted by the shortcut C/G/R. Data from Bockelée-Morvan et al. (2016) and Migliorini et al. (2016) are denoted by the shortcut B/M.

All three observations point to complex relations between solar radiation and gas production. Physical processes explaining this observation need to overcome present assumptions like diurnally averaged irradiation, a sublimation function depending on the instantaneous irradiation (without diurnal or seasonal delay), and fixed surface properties. Gundlach et al. (2020), Skorov et al. (2020), and Fulle et al. (2019) describe non-linear interactions in the soil column, which might explain such effects.

Our data processing with the automatic detection of outliers based on a 2σ criterion within each interval I_j (in Section 2) excludes data from COPS/DFMS, which deviates strongly from the diurnally averaged gas production of the coma model. The outlier analysis could be used in future work to identify a short lasting event, for instance, outbursts on the cometary surface.

ACKNOWLEDGEMENTS

The work was supported by the North-German Supercomputing Alliance (HLRN). *Rosetta* is an ESA mission with contributions from its member states and NASA. We acknowledge herewith the work of the whole ESA *Rosetta* team. ROSINA would not have produced such outstanding results without the work of the many engineers, technicians, and scientists involved in the mission, in the *Rosetta* spacecraft team and in the ROSINA instrument team over the past 20 yr, whose contributions are gratefully acknowledged. Work

on ROSINA at the University of Bern was funded by the State of Bern, the Swiss National Science Foundation, and by the European Space Agency PRODEX program.

DATA AVAILABILITY

The *Rosetta* /ROSINA data (principle investigator K. Altwegg) processed for this publication is taken from the ESA Planetary Science Archive described by Besse et al. (2018). The time series of the global production for all 14 volatiles shown in Fig. 2 is available in CSV format as ancillary files to <https://arxiv.org/abs/2006.01750>.

REFERENCES

- A’Hearn M. F. et al., 2012, *ApJ*, 758, 29
 Altwegg K., Balsiger H., Fuselier S. A., 2019, *ARA&A*, 57, 113
 Attree N. et al., 2019, *A&A*, 630, A18
 Balsiger H. et al., 2007, *Space Sci. Rev.*, 128, 745
 Bardyn A. et al., 2017, *MNRAS*, 722, 712
 Bertaux J.-L., Combi M., Quémerais E., Schmidt W., 2014, *Planet. Space Sci.*, 91, 14
 Besse S., et al., 2018, *Planet. Space Sci.*, 150, 131
 Bieler A. et al., 2015, *A&A*, 583, A7
 Biver N. et al., 1997, *Earth Moon Planets*, 78, 5
 Biver N. et al., 1999, *AJ*, 118, 1850
 Biver N. et al., 2002, *Earth Moon Planets*, 90, 5

- Biver N. et al., 2018, *A&A*, 619, A127
 Biver N. et al., 2019, *A&A*, 630, A19
 Bockele-Morvan D. et al., 2015, *A&A*, 583, A6
 Bockele-Morvan D. et al., 2016, *MNRAS*, 462, S170
 Bockele-Morvan D., Biver N., 2017, *Phil. Trans. R. Soc. A*, 375, 20160252
 Bodewits D. et al., 2020, *Nat. Astron.*, 4, 867
 Calmonte U. et al., 2016, *MNRAS*, 462, S253
 Colangeli L. et al., 2007, *Adv. Space Res.*, 39, 446
 Combi M. et al., 2020, *Icarus*, 335, 113421
 Coradini A. et al., 2007, *Space Sci. Rev.*, 128, 529
 Cordiner M. A. et al., 2020, *Nat. Astron.*, 4, 861
 Enzian A., 1999, *Composition and Origin of Cometary Materials*. Springer Netherlands, Dordrecht
 Fink U. et al., 2016, *Icarus*, 277, 78
 Fougere N. et al., 2016a, *MNRAS*, 462, S156
 Fougere N. et al., 2016b, *A&A*, 588, A134
 Fougere N., Combi M., Rubin M., Tennishev V., 2013, *Icarus*, 225, 688
 Fray N. et al., 2016, *Nature*, 538, 72
 Fulle M., Blum J., Rotundi A., 2019, *ApJ*, 879, L8
 Gasc S. et al., 2017a, *Planet. Space Sci.*, 135, 64
 Gasc S. et al., 2017b, *MNRAS*, 469, S108
 Gulkis S. et al., 2007, *Space Sci. Rev.*, 128, 561
 Gundlach B., Fulle M., Blum J., 2020, *MNRAS*, 493, 3690
 Hansen K. C. et al., 2016, *MNRAS*, 462, S491
 Haser L., 1957, *Bull. Cl. Sci. Acad. R. Belg.*, 43, 740
 Hassig M. et al., 2015, *Science*, 347, aaa0276
 Hoang M. et al., 2017, *A&A*, 600, A77
 Keller H. U. et al., 2007, *Space Sci. Rev.*, 128, 433
 Keller H. U. et al., 2015, *A&A*, 583, A34
 Keller H. U., Kuhrt E., 2020, *Space Sci. Rev.*, 216, 14
 Kissel J. et al., 2007, *Space Sci. Rev.*, 128, 823
 Kramer T., Lauter M., 2019, *A&A*, 630, A4
 Kramer T., Noack M., 2015, *ApJ*, 813, L33
 Kramer T., Lauter M., Rubin M., Altwegg K., 2017, *MNRAS*, 469, S20
 Kramer T., Noack M., Baum D., Hege H.-C., Heller E. J., 2018, *Adv. Phys.*, X, 3, 1404436
 Kramer T., Lauter M., Hviid S., Jorda L., Keller H., Kuhrt E., 2019, *A&A*, 630, A3
 Lauter M., Kramer T., Rubin M., Altwegg K., 2019, *MNRAS*, 483, 852
 Luspay-Kuti A. et al., 2015, *A&A*, 583, A4
 Marschall R. et al., 2017, *A&A*, 605, A112
 Marshall D. W. et al., 2017, *A&A*, 603, A87
 Migliorini A. et al., 2016, *A&A*, 589, A45
 Mottola S., Attree N., Jorda L., Keller H. U., Kokotanekova R., Marshall D., Skorov Y., 2020, *Space Sci. Rev.*, 216, 2
 Narasimha R., 1962, *J. Fluid Mech.*, 12, 294
 Preusker F. et al., 2017, *A&A*, 607, L1
 Rubin M. et al., 2018, *Sci. Adv.*, 4, eaar6297
 Rubin M. et al., 2019, *MNRAS*, 489, 594
 Schroeder I. R. H. G. et al., 2019, *MNRAS*, 489, 4734
 Schulz R. et al., 2015, *Nature*, 518, 216
 Shinnaka Y. et al., 2017, *AJ*, 153, 76
 Skorov Y., Keller H. U., Mottola S., Hartogh P., 2020, *MNRAS*, 494, 3310
 Snodgrass C. et al., 2017, *Phil. Trans. R. Soc. A*, 375, 20160249
 Stern S. A. et al., 2007, *Space Sci. Rev.*, 128, 507
 Tennishev V., Combi M., Davidsson B., 2008, *ApJ*, 685, 659
 Vincent J.-B. et al., 2016, *MNRAS*, 462, S184
 Zakharov V. V., Crifo J.-F., Rodionov A., Rubin M., Altwegg K., 2018, *A&A*, 618, A71

This paper has been typeset from a $\text{\TeX}/\text{\LaTeX}$ file prepared by the author.