

The detection of elemental signatures of microbes in Martian mudstone analogues using high-spatial resolution laser ablation ionization mass spectrometry

Andreas Riedo^{1,2}, Coen de Koning¹, Adam H. Stevens³, Charles S. Cockell³, Alison McDonald⁴, Alena Cedeño López⁵, Valentine Grimaudo², Marek Tulej², Peter Wurz², and Pascale Ehrenfreund^{1,6}

¹Laboratory for Astrophysics, Leiden Observatory, Leiden University, Leiden, The Netherlands

²Space Research and Planetary Sciences, Physics Institute, University of Bern, Bern, Switzerland

³School of Physics and Astronomy, UK Centre for Astrobiology, University of Edinburgh, Edinburgh, United Kingdom

⁴School of Engineering, Bioimaging Facility, University of Edinburgh, Edinburgh, United Kingdom

⁵Department of Chemistry and Biochemistry, University of Bern, Bern, Switzerland

⁶Space Policy Institute, George Washington University, 20052 Washington DC, USA

Corresponding Author: Andreas Riedo, Space Research and Planetary Sciences, Physics Institute, Sidlerstrasse 5, CH-3012 Bern, University of Bern, Switzerland
Phone: +41 31 631 30 71
E-Mail: andreas.riedo@space.unibe.ch

Running Title: LIMS detects elemental signatures of microbes in Martian analogues

Abstract

The detection and identification of biosignatures on planetary bodies such as Mars *in situ* is extremely challenging. Current knowledge from space exploration missions suggests that a suite of complementary instruments is required *in situ* for a successful identification of past or present life. For future exploration missions, new and innovative instrumentation capable for high spatial resolution chemical (elemental and isotope) analysis of solids with improved measurement capabilities is of considerable interest because a multitude of potential signatures of extinct or extant life have dimensions on the micrometer scale. The aim of this study is to extend the current measurement capabilities of a miniature laser ablation ionization mass spectrometer designed for space exploration missions to detect signatures of microbial life. In total, fourteen martian mudstone analogue samples were investigated regarding their elemental composition. Half of the samples were artificially inoculated with a low number density of microbes and half were used as abiotic controls. The samples were treated in a number of ways. Some were cultured anaerobically and some aerobically; some abiotic samples were incubated with water and some remained dry. Some of the samples were exposed to a large dose of γ -radiation and some were left un-irradiated. While no significant elemental differences were observed between the applied sample treatments, the instrument showed the capability to detect biogenic element signatures of the inoculated microbes by monitoring biologically relevant elements, such as hydrogen, carbon, sulphur, iron, etc. When an enrichment in carbon was measured in the samples but no simultaneous increase in other biologically relevant elements was detected, it suggests, for example, a carbon containing inclusions; when the enrichment was in carbon and in bio-relevant elements, it suggests the presences of microbes. This study presents first results on the detection of biogenic element patterns of microbial life using a miniature LIMS system designed for space exploration missions.

Keywords: microbes, LIMS, space exploration, Mars, laser ablation ionisation mass spectrometry, high resolution elemental imaging

Introduction

The detection and identification of biosignatures on Mars *in situ* are important challenges in Astrobiology and Space Science (e.g., Grotzinger *et al.*, 2012; Vago *et al.*, 2017; Westall *et al.*, 2015). A positive detection would have a tremendous impact on the perception of our society, as the question “Is there life beyond Earth” could be answered, a “research topic” that started with the Viking missions on Mars in the 1970’s (e.g., Klein 1978; Klein 1979; Soffen and Snyder 1976). Past and current missions have demonstrated that the *in situ* detection and identification of traces of life on Mars is extremely challenging. A positive detection of life will depend on many different factors, ranging from the selection of the most promising field site, which may host or preserve biomarkers, to the application of appropriate instrumentation, measurement capabilities and sensitivity.

Recently, the habitability and the potential for biosignature preservation in terrestrial analogues of five key Mars environments (hydrothermal spring systems, subaqueous environments, subaerial environments, subsurface environments, and iron-rich systems) were reviewed in detail (Hays *et al.*, 2017). The review demonstrates the complexity of each environment and that a better understanding of currently available space instrumentation is required to determine what can be measured *in situ* on Mars. Complementary to the achievements of bulk chemical analysis methods conducted in the field sites, sensitive spectroscopic, spectrometric, and imaging instrumentation with micrometer-level spatial resolution are of high interest for future exploration missions. At best, the instrumentation should have the ability to, for example, differentiate biotic and abiotic signatures (Cady *et al.*, 2003; Hays *et al.*, 2017).

Various potential biosignatures and their response to time and change in environment have been discussed in literature, ranging from organic biomolecules (e.g., amino acids, lipids, etc.) to microscopic structures (e.g., microfossils, cherts, etc.), (e.g., Aerts *et al.*, 2014; Boston *et al.*, 2001; Cady *et al.*, 2003; Marshall *et al.*, 2017; Mustard *et al.*, 2013; Vago *et al.*, 2017). The Mars2020 Science Definition Team has identified six major groups of signatures of life; organic molecules, minerals, macro-structures and -textures, micro-structures and -textures, chemistry, and isotope fractionation (Mustard *et al.*, 2013). Detecting and analyzing *in situ* micro-scale structures, textures and chemistry of biological features such as biofilms, microfossils or even single organisms requires sensitive measurement techniques that provide spatial resolution at micrometer scale. Instrumentation designed for *in situ* bulk chemical analysis might not detect micrometer-scale signatures because the specific chemical information of these features is not significant within the surrounding host material.

To date, various laboratory measurement techniques and instrumentation devoted for the detection of signatures of life exist. Biomolecules, such as amino acids or lipids extracted from, for example, meteoritic material can be analyzed with laboratory instrumentation such as Gas-Chromatography Mass Spectrometry (GC-MS), Liquid-Chromatography Mass Spectrometry (LC-MS) (Aerts *et al.*, 2019; Botta *et al.*, 2002), or Matrix-Assisted Laser Desorption/Ionisation Mass spectrometry (MALDI) instrumentation. Geomatrix-Assisted Laser Desorption/Ionization Mass Spectrometry (GALDI, based on MALDI) coupled to a Fourier-Transform Mass Spectrometer (FT-MS) represent an instrumentation that has the measurement capabilities for direct biomolecule detection in mineral matrixes or solids (Kotler *et al.*, 2008; Scott and Tremblay 2002; Yan *et al.*, 2007). Resources needed by such instruments makes most of them unsuitable for a space application. However, instrumentation designed for space exploration devoted for the detection of signatures of life has been developed. The Sample Analysis at Mars instrument (SAM, on Curiosity rover), which is equipped with several GC columns coupled to quadrupole mass spectrometer (QMS) (Mahaffy *et*

al., 2012), or the Mars Organic Molecule Analyser (MOMA, on ExoMars rover) instrument suite that consists of Laser Desorption/Ionization QMS (Goesmann *et al.*, 2017; Li *et al.*, 2017), are two of the prominent flight instrumentation that are currently employed in space exploration on Mars or will be in the future. Each of these techniques differ in their advantages and drawbacks by means of, for example, detection sensitivity, measurement speed, spatial resolution, etc. We refer to the provided citations for further details.

In this contribution, we present the current measurement capabilities of a miniature laser-ablation ionisation mass spectrometer (LIMS) for the detection of element signatures of microbial life inoculated in an analogue of martian mudstone. The system used is designed for *in situ* characterisation of the elemental, chemical, and isotope composition of solid samples on planetary surfaces with a high spatial resolution (lateral and vertical resolution at the micro- and nanometer level, respectively), and has proven capabilities identifying, for example, putative micrometer-sized fossil structures embedded in a host mineral matrix (Tulej *et al.*, 2015; Wiesendanger *et al.*, 2018) and mineral phases within geological materials (Neubeck *et al.*, 2015). The measurements conducted for this study demonstrate that identifying single cells is feasible using this instrument by monitoring major biological relevant elements.

Experimental

Sample Material and Preparation

The analogue material used in our sample preparation and the microbial inoculation is described in full detail in previous publications (Stevens *et al.*, 2019; Stevens *et al.*, 2018). Therefore, only a brief discussion is given below.

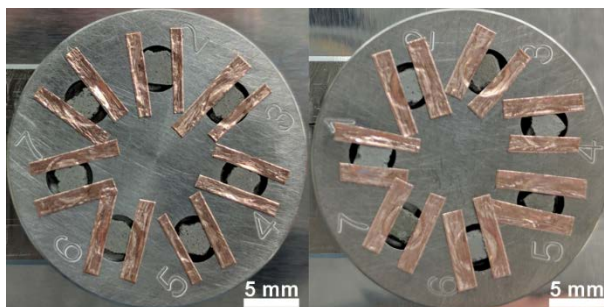


FIG. 1 Two LIMS sample holders are shown with the mudstone analogues installed. The materials were cut with a surgery blade in fragments of mm dimensions and fixed on the sample holders with ultra-high-vacuum compatible tape. A total of fourteen different samples were measured where half of the analogue materials contained microbes at low concentrations (on the order of $\sim 10^6$ cells/cm³).

The martian analogue mineral matrix, which is the same for all the samples investigated in this study, is an artificially produced martian mudstone analogue (Y-Mars) that is a mixture of powdered commercially available minerals (Albite, Saponite, Augite, Magnetite, Enstatite, Dunite, Anhydrite, Sanidine, Pyrrhotite, and Selenite). These minerals were chosen to match *in situ* measurements of martian drill samples (Vaniman *et al.*, 2014).

In total, 14 samples were investigated by using LIMS. Half of the mudstone analogue samples were artificially inoculated with an environmental microbial sample from a lake (cell counting lead to a density in the order of 10^6 cells/cm³). Negative controls with no microbial inoculation were prepared with dry analogue material or with water under the same aerobic or anaerobic atmospheres. Following inoculation and culture under 96% N₂/4% CO₂ for nine months, samples were dried and pressed into pellets. The sample pellets were then exposed to different radiation conditions (Cobalt-60 gamma ray source), with some samples receiving a dose of 101.5 kGy γ -radiation approximating a dose at Mars of 100 Ma under a dose rate at a burial depth of 3 m of 1.8 mGy yr⁻¹. See the work of Stevens *et al.* (2019) for full details.

Various analytical techniques were used for the characterisation of the sample material, including DNA sequencing, bulk analysis mass spectrometry, high-resolution Raman spectroscopy, and Fourier transform infrared spectroscopy. The scientific findings acquired by using these techniques are discussed in detail in the work of Stevens *et al.* (2019), which concluded that only techniques offering sufficiently high spatial resolution allow for the detection of biological signatures from such samples.

For the LIMS analysis of the samples (S1 - S7), the pellets were cut in mm-sized pieces and fixed in cavities on two sample holders (H1 and H2) with ultra-high-vacuum compatible copper tape. Sample handling and preparation was conducted in a clean room (ISO 5) to avoid environmental contamination. Figure 1 shows the two sample holders with the accommodated samples. Table 1 gives an overview of the sample material investigated by using the LIMS including sample treatment. For biologically cultured materials (samples on sample holder H1) multiple samples were prepared per treatment, which is represented by the number given in the acronym (e.g., AN3I). Samples not listed were used with other analytical techniques (Stevens *et al.*, 2019).

Tab 1: Investigated sample material and sample treatment.

Holder 1: biotic samples		Holder 2: abiotic samples	
H1S1	AN3I	H2S1	AEDI
H1S2	AN3I	H2S2	ANDI
H1S3	AN2I	H2S3	AEWI
H1S4	AN2U	H2S4	AEDU
H1S5	AN3U	H2S5	ANWU
H1S6	AN3U	H2S6	ANDU
H1S7	AN2U	H2S7	ANWI

AN: anaerobic; D: dry; U: un-irradiated; AE: aerobic; W: wet; I: irradiated.

After LIMS analysis, Energy Dispersive X-ray (EDX) spectroscopy measurements (Hitachi, S300N instrument, working distance ~17.1 mm, acceleration voltage 25 kV, image size 512 x 384 px) were conducted on three samples (H1S2, H1S3, and H1S6, randomly selected) to investigate the porosity (voids) and chemical homogeneity of the mudstone analogues. In Figure 2 element maps of O, Al, and Si (other element maps show the same characteristics) are shown of the sample H1S2. Some localized voids due to sample porosity are clearly visible. In case a void appears directly at the surface and has dimensions close to the spot size (10 – 20 μm) and focal depth (up to about 100 μm , pulse energy dependent) of our focused laser beam, a reduced signal is recorded with our system. In those cases, the measurement was repeated at the same instrument setting at a new and fresh sample location. Further, while the element maps of Al and Si show a high chemical homogeneity of the samples, there are a few locations with slightly increased O. The latter may point to single mineral grains that may still be present in the martian analogue material. Such mineral inclusions result in a temporally increased signal intensity of mineral specific elements when using LIMS (Neubeck *et al.*, 2015).

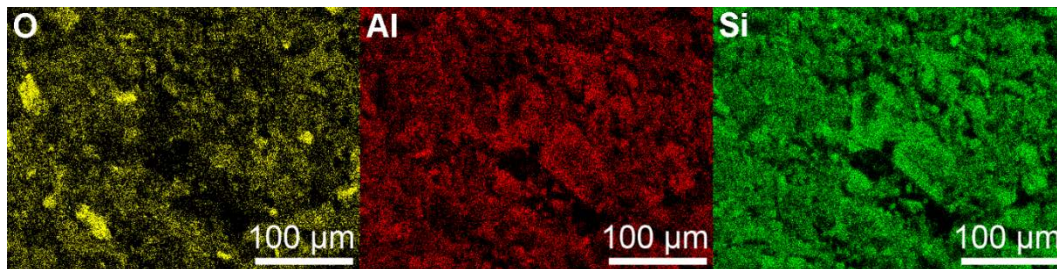


FIG. 2 EDX measurements of the sample H1S2 after LIMS measurements. From left to right, the elemental maps of O, Al, and Si are shown.

LIMS measurement protocol

The measurement principles and figures of merit of the miniature LIMS system used in this study are discussed in detail in previous publications (Grimaudo *et al.*, 2017; Grimaudo *et al.*, 2015;

Neubeck *et al.*, 2015; Riedo *et al.*, 2013a; Riedo *et al.*, 2013b; Tulej *et al.*, 2015; Wiesendanger *et al.*, 2017; Wiesendanger *et al.*, 2018). Therefore, only a brief description of the system is given in the following.

The LIMS system consists of a miniature (160 mm x Ø 60 mm) reflectron-type time-of-flight (R-TOF) mass spectrometer that is coupled to a femtosecond laser system ($\lambda = 775$ nm, pulse width of ~190 fs, 1 kHz laser pulse repetition rate) used for ablation and ionisation of sample material (Riedo *et al.*, 2013a; Riedo *et al.*, 2013b). The mass spectrometer is located inside a vacuum chamber with a typical base pressure at the mid 10^{-8} mbar level. The laser system is located outside the vacuum chamber and a beam guiding system is used for beam delivery to the mass spectrometer. A lens system installed just above the mass spectrometer, inside the vacuum chamber, allows focusing the laser pulses through the mass spectrometer towards the sample surface to spot-sizes with a diameter in the range of about 10 – 20 μm (depending on sample material and applied laser pulse energy). The sample holders are placed on a 3D translation stage with a position accuracy of ~2 μm . A microscope camera system with resolving power of 1 μm allows accurate positioning of the samples below the mass spectrometer (Wiesendanger *et al.*, 2018). Each laser pulse induces material ablation and ionisation, and only positively charged species can enter the mass spectrometer. After acceleration, confinement and focussing of the ions towards the field free drift path the ions are reflected at the ion mirror towards the detector system (Riedo *et al.*, 2017) by passing a second time the field-free drift path. The ions arrive in time sequences at the detector system according to their mass-to-charge ratio (time-of-flight measurement principle, separation occurs in the field free drift paths), and a quadratic equation $m(t) = k_0 (t-t_0)^2$ is used for the conversion between TOF and mass spectrum, where k_0 and t_0 are fit constants (Riedo *et al.*, 2013a). A high-speed analogue-to-digital-converter card is used for signal acquisition (2 channels, each with a sampling speed of up to 2 GS/s, 8 bit vertical resolution). An in-house written software suite (Matlab) is used for the conversion

between TOF to mass spectra and subsequent data analysis. A detailed description of the software can be found in a recent publication (Meyer *et al.*, 2017).

As the primary goal of this study was the detection of elemental signatures of microbial cells within the mudstone analogue, the same measurement methodology based on spot-wise chemical depth profiling was used as developed earlier for the same LIMS instrument (Grimaudo *et al.*, 2015). This measurement protocol has previously been applied to successfully identify fossil structures of micrometer dimensions in a host mineral matrix by monitoring biologically relevant elements (Tulej *et al.*, 2015; Wiesendanger *et al.*, 2018), mineral phases in geological sample by monitoring mineral specific elements (Neubeck *et al.*, 2015), and layering structures of nanometer dimensions containing residues of additives used in the electroplating processes (Moreno-García *et al.*, 2016; Riedo *et al.*, 2015). In this measurement protocol, a number of TOF spectra (here 500) are accumulated first onboard by the data acquisition card and subsequently saved as one file on the host computer. In this study, at each instrument setting 60'000 laser shots were applied on a new sample location, resulting in 120 accumulated TOF files. Each file represents a layer of ablated sample material and in total tens of micrometers are ablated with this number of total laser shots, depending on the used laser power (Tulej *et al.*, 2015). By using this measurement principle, a laser irradiance campaign (2.0, 2.4, 2.8, 3.3, 4.0, 4.7, and 5.2 TW/cm²) was conducted on each sample, corresponding to applied laser pulse energies measured at sample surface of ~0.7 – 1.7 µJ, that allows the identification of optimal conditions for signal-to-noise and mass resolution. Measurements conducted at laser irradiances in the range of 2.4 – 4.7 TW/cm² (corresponding to pulse energies within ~0.8 – 1.6 µJ) showed best measurement results and were used for subsequent data analysis.

Results

Bulk chemical analysis

The chemical depth profiling procedure discussed in the previous sections allows us not only to have spatially resolved chemical information of the investigated sample, but also to have a bulk view of the chemical composition by accumulating a large number of such files from the same surface position (Neuland *et al.*, 2018; Neuland *et al.*, 2014). Small variations in signal intensities, due to, for example, sample morphology and local mineralogy, are averaged out by this procedure, which increases the reliability and representability of chemical information for the bulk matrix. This accumulation of a large number of such files was conducted to investigate if any differences between the sample treatments could be observed (wet to dry, anaerobic to aerobic, irradiated to unirradiated).

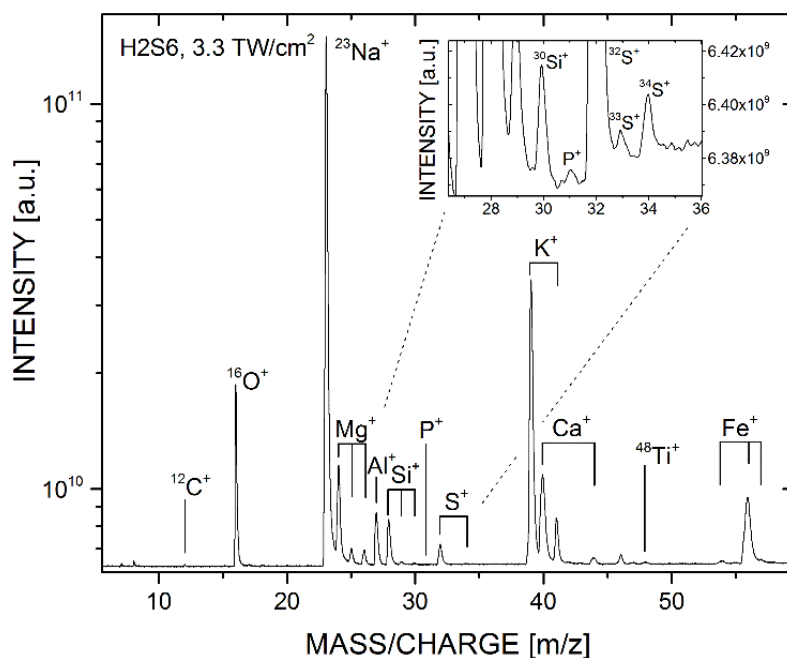


FIG. 3 Typical bulk-like overview mass spectrum of the martian analogue matrix (sample H2S6) showing the mass range of interest between the elements carbon and iron. Here, the shown mass spectrum is an accumulation of 71

files, each consisting of 500 spectra, which results in a total compilation of 35'500 LIMS spectra. In the inset, showing the mass/charge range of ~27 – 36, phosphorus with an abundance of ~60 ppm abundance (at. fract.) is clearly visible.

In Figure 3 a typical overview, bulk-like mass spectrum for the mass range of interest - carbon to iron – of sample H2S6 (abiotic, dry, unirradiated) is shown. Here, the mass spectrum is an accumulation of 71 files, which corresponds to a total accumulation of 35'500 single mass spectra (71 x 500 mass spectra). Spectra that showed a poor mass resolution were removed (Wiesendanger *et al.*, 2019).

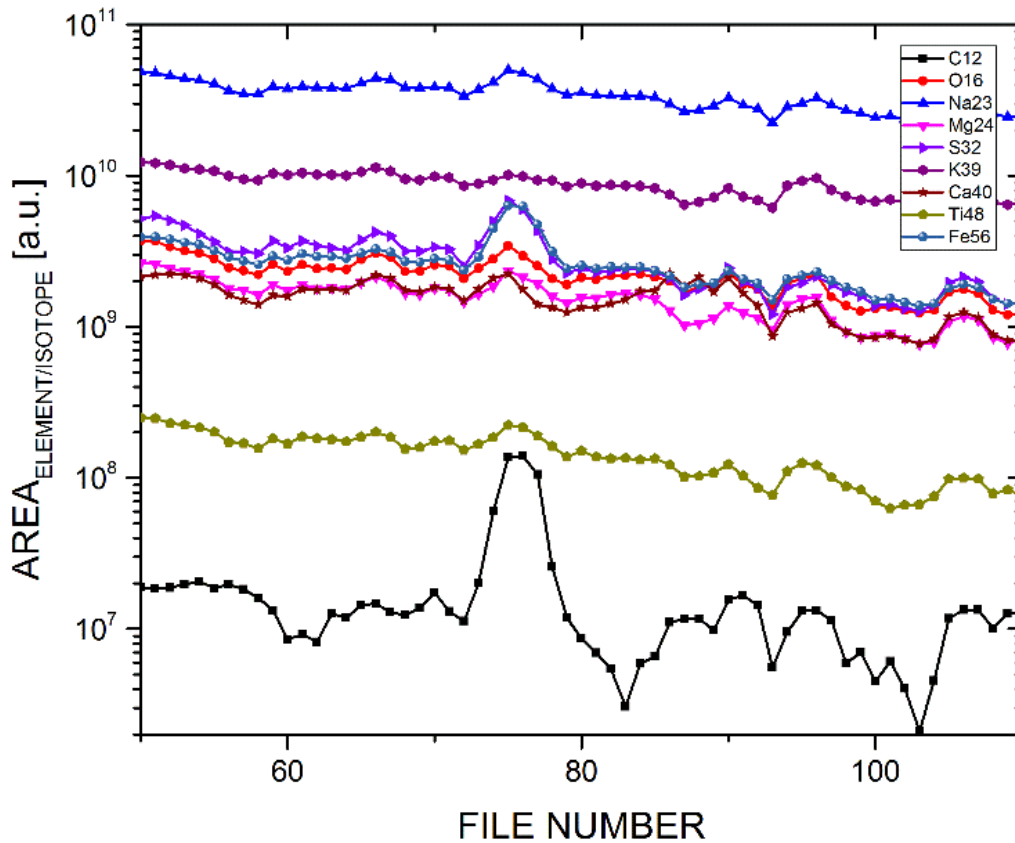


FIG. 4 Peak area variations of a group of elements measured in sample H1S6 as function of depth, i.e., the recorded file number. Slight abundance variations for the elements are expected, given the heterogeneous nature of the sample, but around file number 76 carbon shows a tenfold increase in intensity. For elements such as S, Fe, and to a lesser

extend O, a significant increase can be observed as well whereas the other elements stay almost constant (note the logarithmic scaling). This element monitoring allows the identification of regions of interest, here a carbon-rich layer.

Identification of carbon rich layers

In analytical measurement techniques that involve laser ablation ion sources, for example, Laser Induced Breakdown Spectroscopy (LIBS), Laser Ablation Ionisation Mass Spectrometry (LIMS), or Laser Ablation Inductively Coupled Mass Spectrometry (LA-ICP-MS), shot-to-shot signal variations are expected (e.g., Cui *et al.*, 2012; De Bonis *et al.*, 2014; Gutierrez-Gonzalez *et al.*, 2015). Such variations may arise from various factors, including instability of the used laser system, sample morphology and porosity (voids), and local variations in chemical composition, among others. Fortunately, in the instrument setup used in this study, the factor “laser stability” is negligible as the system has an excellent pulse-to-pulse energy stability in the per mill range. Therefore, changes in the observed signal intensities can be attributed to changes in the morphology and chemistry of the investigated sample.

Contrary to the bulk chemical analysis of the mudstone analogue sample shown in Fig. 3, the advantage of the chemical depth profiling measurement methodology is demonstrated in Fig. 4. Here, intensity variations of a subset of user-defined elements within a recorded file range of ~50 – 110 are shown. When using this measurement procedure, regions of scientific interest can be identified, and the subset of measured data can be used to further investigate the local chemical composition; contributions from the mudstone analogue material can be therefore reduced. At around file number 76 a carbon-rich layer is identified where carbon shows about a ten-fold increase in comparison to the surrounding mudstone host material.

The mass spectrum for a carbon-rich layer described in Fig 4. is shown in Fig. 5. In red (pointing downwards) the mass spectrum of the layer enriched in carbon is shown, whereas in black solid and orange dashed (both pointing upwards) the mass spectra of the surrounding mudstone analogue,

above and below the observed carbon rich layer (accumulation of 10 layers) are displayed for comparison. To compensate of any signal intensity variation induced by laser ablation and to account for the reduced recorded signals of the carbon-rich layer (only one layer in comparison to the ten layers of the matrix) the three displayed spectra are normalized to Na. In this carbon-rich layer, only a significant increase of carbon can be observed whereas in comparison to the surrounding host material the other elements remain at about the same level. Moreover, note that the spectra of the analogue material measured above and below the carbon rich layer are almost identical which underlines the stability of our LIMS measurements.

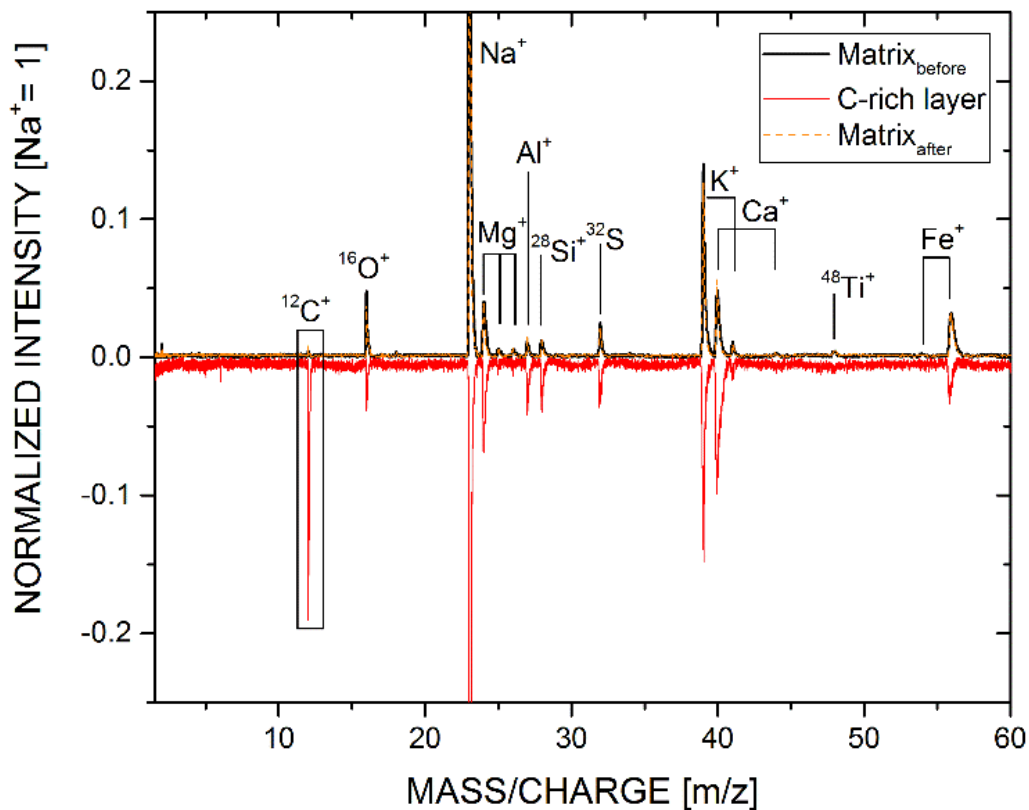


FIG. 5 Mass spectra of a carbon-rich layer (red line, pointing downwards) identified in sample H2S6 (abiotic sample, anaerobic, dry, un-irradiated) and of surrounding analogue material (black solid line: accumulation of 10 files above carbon-rich layer, orange dashed line: accumulation of 10 files below carbon-rich layer) are shown. Here, only a

significant increase of carbon can be observed whereas the intensities of the other elements remain about the same level.

Identification of biologically relevant inclusions

In Figure 6, a mass spectrum from another carbon-rich layer is shown. Similar to Fig. 5, the carbon-rich layer (red) and the surrounding analogue (black and orange) are displayed, and all spectra are normalized to Na. Again, both spectra of analogue material measured above and below the carbon-rich layer agree with each other very well, as no significant differences in element intensities can be observed. For the parts of the mass spectrum shown for N and P (right two panels) a moving average filter with fixed window size (30 data points) was used for noise filtering as the spectrum represents only one layer (reduced statistics), in contrast to the spectra of the mudstone analogue which consist of a compilation of multiple layers. In comparison to the carbon-rich layer shown in Fig. 5, biologically relevant elements such as hydrogen, nitrogen, phosphorus and sulphur, show a significantly increased intensity as well in this measurement.

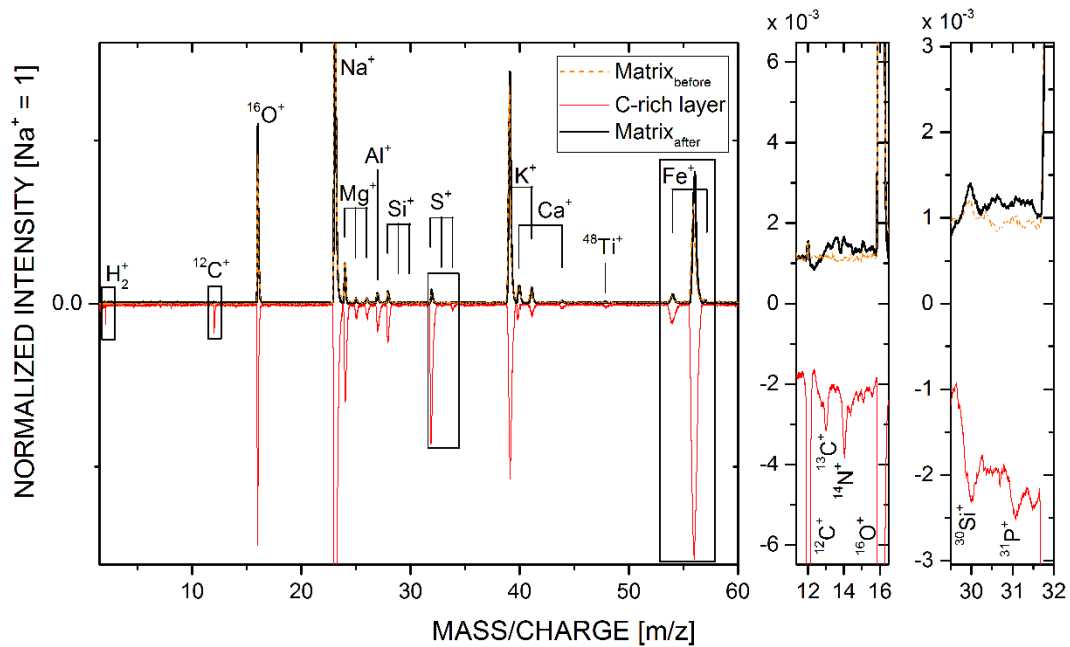


FIG. 6 Mass spectra of a carbon-rich layer (red line, pointing downwards) where a simultaneous increase of biologically relevant elements such as H, N, P, S, and Fe is observed. Upwards (black solid and orange dashed lines) the mass spectra of 10 and 9 accumulated layers above and below the carbon-rich layer, respectively, are displayed for comparison. Note the high measurement reproducibility of both analogue spectra; no significant deviations in other elements can be observed. Sample investigated: H1S5 (biotic sample, anaerobic, un-irradiated).

In Figure 7, the intensity variations of a subset of elements of the special case of the detection of two subsequent biotic layers are shown. Here, layers 2 and 4 correspond to the putative biotic layers, while layers 1 (accumulation of 10 layers above carbon-rich layer), 3 (accumulation of 9 layers between carbon-rich layers), and 5 (accumulation of 10 layers below second carbon-rich layer) correspond to the surrounding analogue material. Further information can be found in the Discussion section below..

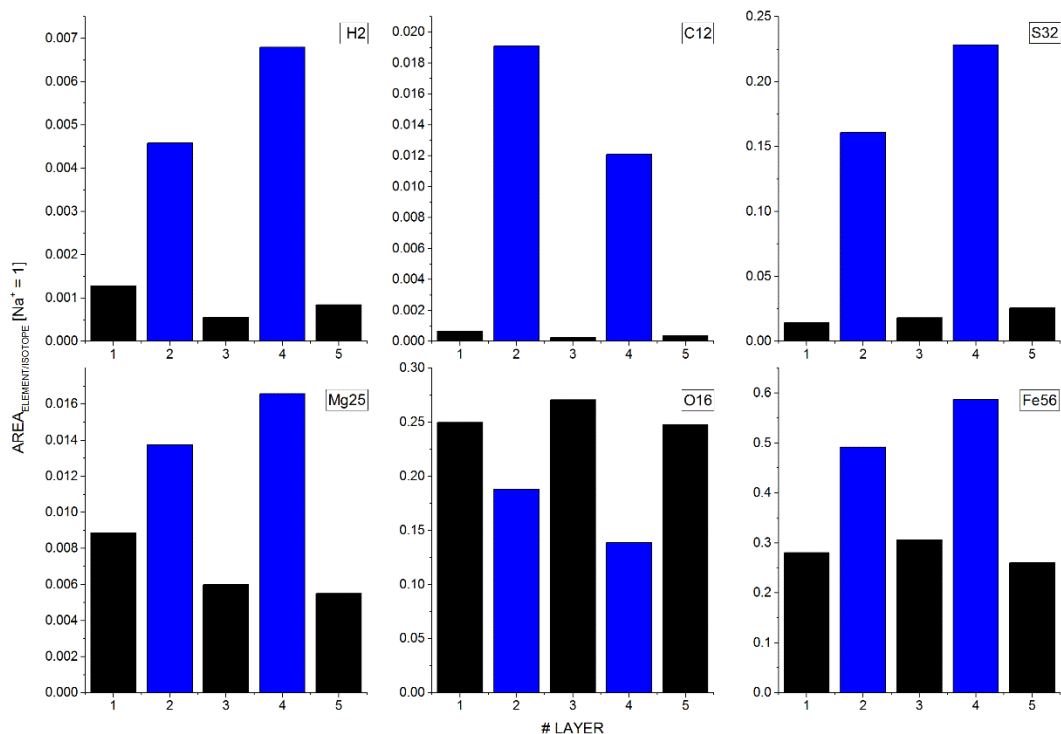


FIG. 7 Intensities of biologically relevant elements, H, C, S, Mg, O and Fe between abiotic (black) and biotic (blue) layers are shown. All but O follow the same trend of increased abundances at biotic layers. Sample investigated: H1S5 (biotic sample, anaerobic, un-irradiated).

Discussion

Bulk chemical analysis and sample treatment

The kinetic energy distribution of ions generated during the ablation process or changes thereof and space charge effects (sample surface charging or columbic repulsion effects) limit the mass resolution of a recorded TOF spectrum. In this study, the local porosity of the material or the formation of the laser ablation crater affects the geometry of the induced plasma plume and therefore the mass resolution of recorded spectra in certain cases. Mass spectra showing a poor mass resolution were not considered for the accumulated spectrum shown in Fig. 3. In the accumulated mass spectrum shown in Fig. 3, representing a bulk chemical analysis of the host, all major to minor

elements, such as O, Si, to Fe, are observed. By looking closely at the data, even the trace elements at the ppm level, such as phosphorus with around 60 ppm abundance (atomic fraction, at. fract.), are clearly visible (see inset).

No significant differences in the elemental composition of the samples when using different sample treatments were observed. Comparing wet and dry sample treatments, no increased H or O abundance was observed, as expected; since the measurements were conducted under ultra-high vacuum conditions (at the 10^{-8} mbar level), all remaining residual water in the mudstone analogue should have evaporated before initiation of the measurements. The same holds for the case of anaerobic and aerobic sample handling: no significant difference in the abundance of O was detected. Moreover, gaseous oxygen is not expected to change the atomic element composition of the mudstone analogue, which is in line with our observation. Further, no significant changes in elemental abundances were observed for the irradiated analogues. This is expected as the radiation source may induce only element isotope fractionation. However, isotope fractionation was not observed when using state-of-the-art isotope ratio measurement techniques (Stevens *et al.*, 2019).

Identification of carbon rich layers

The decreasing trend in element peak areas of elements shown in Fig. 4 with increasing depth can be attributed to a decreased ablation rate with depth and reduced probability for ions to leave from the crater bottom (Grimaudo *et al.*, 2018). The variations superimposed on the general decreasing trend can be attributed to local changes in sample morphology, including physical and chemical characteristics. Similar to a previous study (see Tulej *et al.*, 2015), each recorded file corresponds to an ablated sample layer with a thickness of few hundred nanometres (depending on laser pulse energy). For in situ application of the depth profiling protocol, precise quantification of ablation rate with depth can be realized with measurements conducted on reference materials that mimic the chemical and physical composition of the analysed sample and sophisticated methods for crater

analysis (Grimaudo *et al.*, 2018). Complementary measurement techniques that are typically on board a spacecraft, such as the CheMin X-ray diffraction instrument on Curiosity (Blake *et al.*, 2012), could pre-assess the material, which allows for switching to optimal measurement settings for subsequent analysis using LIMS.

As the main goal of this study is the localisation of microbial life in the sample, we have chosen the element carbon for data screening as this element is abundant in bacterial life and is not supposed to be present in the mudstone analogue (see used minerals to simulate the martian mudstone). In Figure 4 (note the logarithmic scale), we observe an increase in signal intensity of carbon of about ten times at file number 76, compared the measurements above and below the localized carbon increase. For elements such as S and Fe, and to a lesser extend for O, an increase is observed as well but not at the same order of magnitude. Others major elements such as Ti and K remain at about the same intensity. Note, that the observed peak-like shape in Fig. 4 is the result of a moving average with fixed window size of 3, which was applied for easier identification of such localized signal increase. The significant increase of carbon signal points to a location in the sample highly enriched in carbon. Since the laser pulses are focussed to spot sizes of about 20 μm in diameter, an object with significantly different chemical composition that is localized within the ablated layer can introduce such a deviation in signal intensity. However, at this stage, this carbon enrichment cannot be attributed to a biological origin. For a conclusive interpretation of this carbon-rich layer the mass spectrum of this layer needs to be investigated in more detail.

In Figure 5, the mass spectrum of this carbon-rich layer is shown. As can be clearly observed, carbon is the only element significantly increased relative to the surrounding analogue material and other element intensities remain about the same. As no significant changes in other element intensities are observed, the mass spectrum of this carbon-rich layer may represent a carbon grain inclusion rather than to a local inhomogeneity of the analogue material.

Identification of biologically relevant inclusions

In Figure 6, the mass spectrum of another carbon layer is shown. In comparison to Fig. 5, however, we observe a significant increase of biologically relevant elements, such as H, S, and Fe. Careful inspection of the mass spectrum shows an increase in the less abundant elements such as N and P as well (see the two panels to the right). In total, eight such layers significantly enriched in carbon in comparison to the analogue material were identified (like in Figs. 5 and 6) during the conducted measurements. We could not identify a significant trend between sample treatments, such as wet or dry, anaerobic or aerobic, or the applied laser pulse energy. Further, the identified carbon-rich layer showed no systematic appearance at a certain layer, neither within the sample nor at the sample surface (e.g., carbon-rich layers were identified at layers 22 and 71 in samples H1S1 and H1S6, respectively). Carbon-rich layers identified at sample surface could be attributed to sample surface contamination during sample preparation or handling. Of these eight cases, five were found in biotic samples whereas the remaining three were detected in abiotic ones. Figure 6 shows a typical case for the biotic sample material whereas Fig. 5 shows a typical case of an abiotic sample.

For the carbon rich layers detected in samples containing microbial communities, four out of five showed a significant and simultaneous increase of major and minor biologically relevant elements H, O, S, and Fe in the carbon rich layers (Wackett *et al.*, 2004). In the final case, the abundance of H, C, S, and Fe are observed to increase simultaneously, while O decreased slightly. This behaviour might be explained by oxygen-rich surrounding analogue material (XRD measurements showed atomic fractions at the level of ~60%), which could give the impression of a decreasing oxygen content. In all abiotic samples, only a significant increase of carbon was observed, while all other elements stayed constant in comparison to the surrounding mudstone analogue. This means that no false positive (detection of microbial life in an abiotic sample) was made.

Knowing that the martian analogue materials for all investigated samples were identical and that the only difference between biotic and abiotic samples was the presence of microbes, the consistency of finding layers with significantly increased abundances of biologically relevant elements exclusively in analogues containing microbes already strongly implies that biological material was detected reliably. Furthermore, the number of positive detections, assuming that each detection represents a single microbe, is close to the occurrence of microbes within the sample material (in the order of around 10^6 cells/cm³) and the number of conducted measurements. In total 4 measurements were conducted on each biotic material (at 4 different pulse energies); on each biotic sample a total volume of about 4×10^{-7} cm³ was investigated (for crater diameter of ~20 µm, depth of about 50 µm, pitch between each measurement was 100 µm). Therefore, a total volume of ~2.8 x 10⁻⁶ cm³ over all biotic materials was investigated. In that estimated ablated volume around 2 – 3 cells should be detected, which compares well with our five detections. This low number of positive detections is further in line with a complementary study comparing various analysis methods (Stevens *et al.*, 2019), which reported that bulk mass spectrometric analysis showed no indications of microbes, similar to other methods investigating the bulk properties. Only spatially resolved sensitive measurement techniques like high-resolution Raman spectroscopy and here LIMS, identified a biogenic signature. Note, that if we would accumulate all our mass spectra in one final mass spectrum, that is, emulating bulk analysis, we also would not see biogenic signatures. On the other hand, we might assume that the observed elemental pattern belongs to a carbon-containing mineral. However, we screened the mineral database *mindat.org* in search for minerals containing the elements with a significant increase (here H, C, S, Fe; O is not included as it showed in one sample a slightly decreasing trend, see comments above) and found only minerals containing additional other specific elements, such as Zn, which do not match our observations. In Figure 7, the intensity variations of a subset of elements of the special case of the detection of two subsequent biotic layers are shown. In the top row, the intensities of the most significant elements H, C, and S

are displayed. The variations between both biotic and abiotic layers can be clearly observed in these elements, and the element intensities detected for both layer types are highly reproducible in view of the nature of these samples. In the second row, the intensities of Mg, O, and Fe are displayed. The elements Mg and Fe follow the same trend as the elements H, C, and S, which is expected since they participate in the chemistry of living organisms. However, and as stated earlier in the text, O shows a consistent but opposite trend by means of a decreased element abundance in the biotic layer. This observation may be attributed to the fact that O is highly abundant in the analogue material at about ~60% (atomic fraction) whereas in biotic material the O abundance is about 20%, thus the overall measured abundance appears to be lower. A similar trend is observed for K (i.e., a decrease of K in the carbon-rich layer, see Fig. 6), which can be attributed to the lower K abundance in microbes compared to the mineral analogue.

Conclusions

Past and current in situ space exploration missions devoted to the detection of biogenic signatures of extinct or extant life on Mars have shown that identifying biosignatures is extremely challenging. Multi-instrument efforts are required to provide conclusive results if a potentially detected signature is of biotic nature or is induced by geochemical processes. Various laboratory studies have further shown the necessity of sensitive measurement techniques providing information on the chemical composition of solids with high spatial resolution at the micrometer level. Biosignatures, or remnants of life, can be expected at these spatial dimensions, including, for example, fossilized structures, cherts, microbial life, etc.

In this contribution, martian mudstone analogues that were exposed to wet or dry, anaerobic or aerobic, irradiated or unirradiated, and abiotic or biotic conditions were chemically (elements) analyzed with a spatial resolution at the micrometer level by using a miniature LIMS system designed for in situ space exploration. Whereas no significant differences in the element

composition between different sample treatments were identified, the chemical depth profiling measurement protocol, allowed the identification of biotic and abiotic carbon-rich layers within the investigated sample material. In abiotic layers, a significant increase of carbon was detected whereas the other elements remained constant in concentration (with the surrounding analogue material). In biotic layers the signal intensities of various biologically relevant elements, including, for example, H, C, N, S, increased simultaneously. With the knowledge that the only difference between biotic and abiotic samples is the presence of microbes at low number density strongly implies that microbial life was detected. Furthermore, the number of biotic detections is in line with the estimated density of microbes in the analyzed material. Therefore, with the knowledge of the chemical composition of the martian analogue (considered as background, averaging over the entire measurement campaign) and a potential observation of a simultaneous increase of elements associated with biology may allow a reliable in situ identification of microbial life.

These detections were only possible because of the high detection sensitivity of the miniature LIMS system coupled with the measurement capability to chemically investigate a solid with a spatial resolution at the micrometer level. For future studies, it is planned to investigate potential isotope signatures of biologically relevant elements to complement the elemental analysis discussed in this contribution. Nevertheless, the presently accomplished capability is highly promising for the detection of microbial life at micrometer dimensions on planetary surfaces. A measurement suite that combines high-resolution imaging and chemical composition analysis at micrometer level, such as the presented LIMS system, would be advantageous for future space exploration missions devoted to the detection of signatures of life at micrometer dimensions.

Acknowledgments

AR acknowledges the support from the European Union's Horizon 2020 research and innovation programme under the Marie Skłodowska-Curie grant agreement No. 750353. PW acknowledges the

support by the Swiss National Science foundation (SNSF). AHS and CSC were supported by Science and Technology Facilities Council grant No. ST/R000875/1

Author Disclosure Statement

No competing financial interests exist.

References

- Aerts J., Röling W., Elsaesser A., and Ehrenfreund P. (2014) Biota and Biomolecules in Extreme Environments on Earth: Implications for Life Detection on Mars. *Life*, 4: 535.
- Aerts J. W., Riedo A., Melton D. J., Martini S., Meierhenrich U. J., Flahaut J., Lindner R., and Ehrenfreund P. (2019) Biosignature Analysis of Mars Soil Analogues from the Atacama desert: Challenges and Implications for future Missions to Mars. *Astrobiology*, in press.
- Blake D., Vaniman D., Achilles C., Anderson R., Bish D., Bristow T., Chen C., Chipera S., Crisp J., Des Marais D. and others. (2012) Characterization and Calibration of the CheMin Mineralogical Instrument on Mars Science Laboratory. *Space Science Reviews*, 170: 341-399.
- Boston P. J., Spilde M. N., Northup D. E., Melim L. A., Soroka D. S., Kleina L. G., Lavoie K. H., Hose L. D., Mallory L. M., Dahm C. N. and others. (2001) Cave Biosignature Suites: Microbes, Minerals, and Mars. *Astrobiology*, 1: 25-55.
- Botta O., Glavin D. P., Kminek G., and Bada J. L. (2002) Relative Amino Acid Concentrations as a Signature for Parent Body Processes of Carbonaceous Chondrites. *Origins of life and evolution of the biosphere*, 32: 143-163.
- Cady S. L., Farmer J. D., Grotzinger J. P., Schopf J. W., and Steele A. (2003) Morphological Biosignatures and the Search for Life on Mars. *Astrobiology*, 3: 351-368.
- Cui Y., Moore J. F., Milasinovic S., Liu Y., Gordon R. J., and Hanley L. (2012) Depth profiling and imaging capabilities of an ultrashort pulse laser ablation time of flight mass spectrometer. *Review of Scientific Instruments*, 83: 093702.
- De Bonis A., De Filippo B., Galasso A., Santagata A., Smaldone A., and Teghil R. (2014) Comparison of the performances of nanosecond and femtosecond Laser Induced Breakdown Spectroscopy for depth profiling of an artificially corroded bronze. *Applied Surface Science*, 302: 275-279.
- Goesmann F., Brinckerhoff W. B., Raulin F., Goetz W., Danell R. M., Getty S. A., Siljeström S., Mißbach H., Steininger H., Arevalo R. D. and others. (2017) The Mars Organic Molecule Analyzer (MOMA) Instrument: Characterization of Organic Material in Martian Sediments. *Astrobiology*, 17: 655-685.
- Grimaudo V., Moreno-García P., López A. C., Riedo A., Wiesendanger R., Tulej M., Gruber C., Lörtscher E., Wurz P., and Broekmann P. (2018) Combining Anisotropic Etching and PDMS Casting for Three-Dimensional Analysis of Laser Ablation Processes. *Analytical Chemistry*, 90: 2692-2700.
- Grimaudo V., Moreno-García P., Riedo A., Meyer S., Tulej M., Neuland M. B., Mohos M., Gütz C., Waldvogel S. R., Wurz P. and others. (2017) Toward Three-Dimensional Chemical Imaging of Ternary Cu–Sn–Pb Alloys Using Femtosecond Laser Ablation/Ionization Mass Spectrometry. *Analytical Chemistry*, 89: 1632-1641.

- Grimaudo V., Moreno-García P., Riedo A., Neuland M. B., Tulej M., Broekmann P., and Wurz P. (2015) High-Resolution Chemical Depth Profiling of Solid Material Using a Miniature Laser Ablation/Ionization Mass Spectrometer. *Analytical Chemistry*, 87: 2037-2041.
- Grotzinger J. P., Crisp J., Vasavada A. R., Anderson R. C., Baker C. J., Barry R., Blake D. F., Conrad P., Edgett K. S., Ferdowski B. and others. (2012) Mars Science Laboratory Mission and Science Investigation. *Space Science Reviews*, 170: 5-56.
- Gutierrez-Gonzalez A., Gonzalez-Gago C., Pisonero J., Tibbetts N., Menendez A., Velez M., and Bordel N. (2015) Capabilities and limitations of LA-ICP-MS for depth resolved analysis of CdTe photovoltaic devices. *Journal of Analytical Atomic Spectrometry*, 30: 191-197.
- Hays L. E., Graham H. V., Marais D. J. D., Hausrath E. M., Horgan B., McCollom T. M., Parenteau M. N., Potter-McIntyre S. L., Williams A. J., and Lynch K. L. (2017) Biosignature Preservation and Detection in Mars Analog Environments. *Astrobiology*, 17: 363-400.
- Klein H. P. (1978) The Viking biological experiments on Mars. *Icarus*, 34: 666-674.
- Klein H. P. (1979) The Viking mission and the search for life on Mars. *Reviews of Geophysics*, 17: 1655-1662.
- Kotler J. M., Hinman N. W., Yan B., Stoner D. L., and Scott J. R. (2008) Glycine Identification in Natural Jarosites Using Laser Desorption Fourier Transform Mass Spectrometry: Implications for the Search for Life on Mars. *Astrobiology*, 8: 253-266.
- Li X., Danell R. M., Pinnick V. T., Grubisic A., van Amerom F., Arevalo R. D., Getty S. A., Brinckerhoff W. B., Southard A. E., Gonnissen Z. D. and others. (2017) Mars Organic Molecule Analyzer (MOMA) laser desorption/ionization source design and performance characterization. *International Journal of Mass Spectrometry*, 422: 177-187.
- Mahaffy P. R., Webster C. R., Cabane M., Conrad P. G., Coll P., Atreya S. K., Arvey R., Barciniak M., Benna M., Bleacher L. and others. (2012) The Sample Analysis at Mars Investigation and Instrument Suite. *Space Science Reviews*, 170: 401-478.
- Marshall C. P., Marshall A. O., Aitken J. B., Lai B., Vogt S., Breuer P., Philippe Steemans, and Lay P. A. (2017) Imaging of Vanadium in Microfossils: A New Potential Biosignature. *Astrobiology*, 17: 1069-1076.
- Meyer S., Riedo A., Neuland M. B., Tulej M., and Wurz P. (2017) Fully automatic and precise data analysis developed for time-of-flight mass spectrometry. *Journal of Mass Spectrometry*, 52: 580-590.
- Moreno-García P., Grimaudo V., Riedo A., Tulej M., Neuland M. B., Wurz P., and Broekmann P. (2016) Towards Structural Analysis of Polymeric Contaminants in Electrodeposited Cu films. *Electrochimica Acta*, 199: 394-402.
- Mustard J. F., Adler M., Allwood A., Bass D. S., Beaty D. W., Bell III J. F., Brinckerhoff W. B., Carr M., Des Marais D. J., Drake B. and others. (2013) Report of the Mars 2020 Science Definition Team. 154.
- Neubeck A., Tulej M., Ivarsson M., Broman C., Riedo A., McMahon S., Wurz P., and Bengtson S. (2015) Mineralogical determination in situ of a highly heterogeneous material using a miniaturized laser ablation mass spectrometer with high spatial resolution. *International Journal of Astrobiology*, 15: 133-146.
- Neuland M., Mezger K., Riedo A., Tulej M., and Wurz P. (2018) The chemical composition and homogeneity of the Allende matrix. *Meteoritics and Planetary Sciences*, submitted.
- Neuland M. B., Meyer S., Mezger K., Riedo A., Tulej M., and Wurz P. (2014) Probing the Allende meteorite with a miniature laser-ablation mass analyser for space application. *Planetary and Space Science*, 101: 196-209.
- Riedo A., Bieler A., Neuland M., Tulej M., and Wurz P. (2013a) Performance evaluation of a miniature laser ablation time-of-flight mass spectrometer designed for in situ investigations in planetary space research. *Journal of Mass Spectrometry*, 48: 1-15.

- Riedo A., Grimaudo V., Moreno-Garcia P., Neuland M. B., Tulej M., Wurz P., and Broekmann P. (2015) High depth-resolution laser ablation chemical analysis of additive-assisted Cu electroplating for microchip architectures. *Journal of Analytical Atomic Spectrometry*, 30: 2371-2374.
- Riedo A., Neuland M., Meyer S., Tulej M., and Wurz P. (2013b) Coupling of LMS with a fs-laser ablation ion source: elemental and isotope composition measurements. *Journal of Analytical Atomic Spectrometry*, 28: 1256-1269.
- Riedo A., Tulej M., Rohner U., and Wurz P. (2017) High-speed microstrip multi-anode multichannel plate detector system. *Review of Scientific Instruments*, 88: 045114.
- Scott J. R., and Tremblay P. L. (2002) Highly reproducible laser beam scanning device for an internal source laser desorption microprobe Fourier transform mass spectrometer. *Review of Scientific Instruments*, 73: 1108-1116.
- Soffen G. A., and Snyder C. W. (1976) The First Viking Mission to Mars. *Science*, 193: 759.
- Stevens A. H., McDonald A., de Koning C., Riedo A., Preston L. J., Ehrenfreund P., Wurz P., and Cockell C. S. (2019) Detectability of biosignatures in a low-biomass simulation of martian sediments. *Scientific Reports*, 9: 9706.
- Stevens A. H., Steer E., McDonald A., Amador E. S., and Cockell C. S. (2018) Y-Mars: An Astrobiological Analogue of Martian Mudstone. *Earth and Space Science*, 5: 163-174.
- Tulej M., Neubeck A., Ivarsson M., Riedo A., Neuland M. B., Meyer S., and Wurz P. (2015) Chemical Composition of Micrometer-Sized Filaments in an Aragonite Host by a Miniature Laser Ablation/Ionization Mass Spectrometer. *Astrobiology*, 15: 669-682.
- Vago J. L., Westall F., Pasteur Instrument Teams L. S. S. W. G., Contributors O., Coates A. J., Jaumann R., Korabiev O., Ciarletti V., Mitrofanov I., Josset J.-L. and others. (2017) Habitability on Early Mars and the Search for Biosignatures with the ExoMars Rover. *Astrobiology*, 17: 471-510.
- Vaniman D. T., Bish D. L., Ming D. W., Bristow T. F., Morris R. V., Blake D. F., Chipera S. J., Morrison S. M., Treiman A. H., Rampe E. B. and others. (2014) Mineralogy of a Mudstone at Yellowknife Bay, Gale Crater, Mars. *Science*, 343.
- Wackett L. P., Dodge A. G., and Ellis L. B. M. (2004) Microbial Genomics and the Periodic Table. *Applied and Environmental Microbiology*, 70: 647-655.
- Westall F., Foucher F., Bost N., Bertrand M., Loizeau D., Vago J. L., Kminek G., Gaboyer F., Campbell K. A., Bréhéret J.-G. and others. (2015) Biosignatures on Mars: What, Where, and How? Implications for the Search for Martian Life. *Astrobiology*, 15: 998-1029.
- Wiesendanger R., Tulej M., Grimaudo V., Cedeño-López A., Lukmanov R., Riedo A., and Wurz P. (2019) A method for improvement of mass resolution and isotope accuracy for laser ablation time-of-flight mass spectrometers. *Journal of Chemometrics*, 33: e3081.
- Wiesendanger R., Tulej M., Riedo A., Frey S., Shea H., and Wurz P. (2017) Improved detection sensitivity for heavy trace elements using a miniature laser ablation ionisation mass spectrometer. *Journal of Analytical Atomic Spectrometry*, 32: 2182-2188.
- Wiesendanger R., Wacey D., Tulej M., Neubeck A., Ivarsson M., Grimaudo V., Moreno P., Cedeño López A., Riedo A., and Wurz P. (2018) Chemical and optical identification of micrometer-sized 1.9 billion-year-old fossils by combining a miniature laser ablation ionization mass spectrometry system with an optical microscope. *Astrobiology*, 18: 1071-1080.
- Yan B., Stoner D. L., Kotler J. M., Hinman N. W., and Scott J. R. (2007) Detection of Biosignatures by Geomatrix-Assisted Laser Desorption/Ionization (GALDI) Mass Spectrometry. *Geomicrobiology Journal*, 24: 379-385.