

# ***Impact of accelerometer modelling and parameterization on the BepiColombo orbit determination and gravimetry experiment***

***Alireza HosseiniArani<sup>1,2,5</sup>, Stefano Bertone<sup>3,4</sup>, Daniel Arnold<sup>1</sup>, Adrian Jäggi<sup>1</sup>, Nicolas Thomas<sup>2</sup>***

<sup>1</sup> *Astronomical Institute, University of Bern, Bern, Switzerland*

<sup>2</sup> *Physics Institute, University of Bern, Bern, Switzerland*

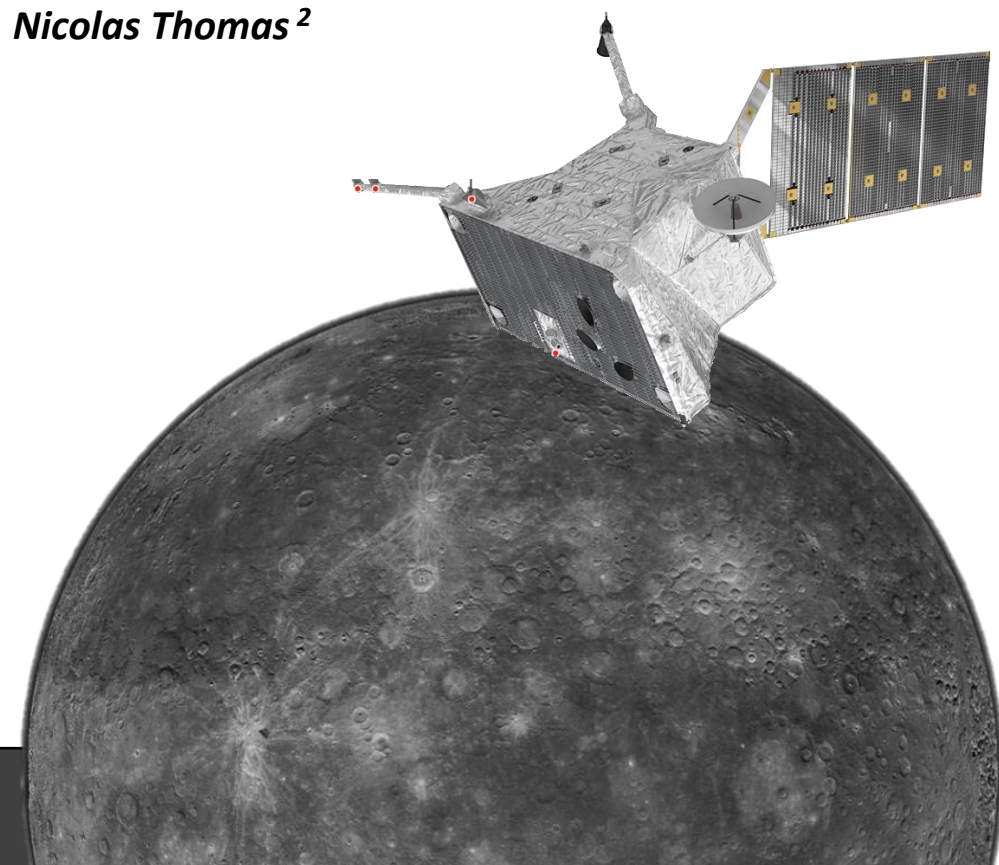
<sup>3</sup> *NASA Goddard Space Flight Center (GSFC), Baltimore, MD, United States*

<sup>4</sup> *Center for Research and Exploration in Space Science and Technology,  
University of Maryland Baltimore County, Baltimore, MD, USA*

<sup>5</sup> *Institute of geodesy, Leibniz University Hannover, Hannover, Germany (current affiliation)*

***43th COSPAR Scientific Assembly***

***28. Jan – 04. Feb 2021 | Sydney, Australia***



## Mission:

**BepiColombo mission**

Launch: October 2018

Arrival to Mercury: Dec. 2025

**MPO:** Mercury planetary orbiter

## Relevant on-board instruments:

**ISA:** Italian Spring Accelerometer

**MORE:** Mercury Orbiter Radio-science Experiment

## Goal of the study:

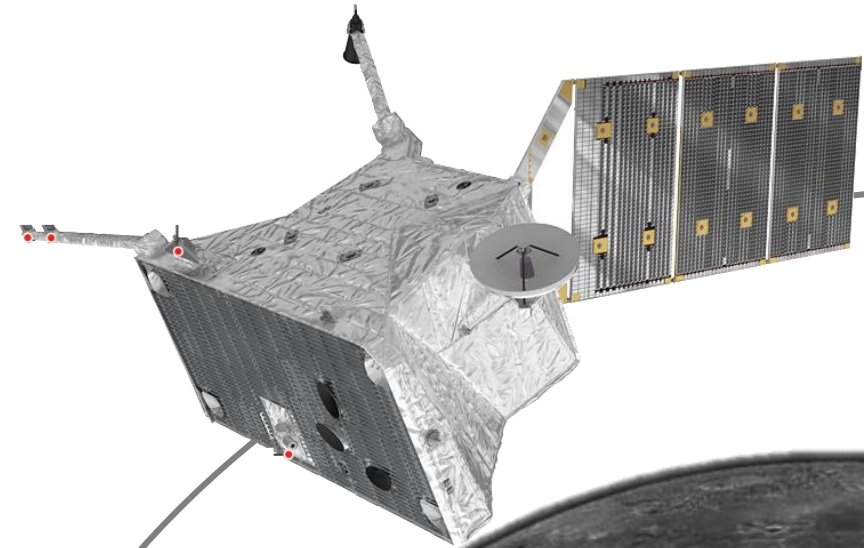
Impact of accelerometer noise modelling and its parameterization on the MPO orbit determination and gravimetry experiment

## Tool:

Planetary extension of **Bernese GNSS software**

Developed at the Astronomical institute of the University of Bern

Also used for planetary POD for GRAIL and for mission concepts at Europa



## Simulation

### Force model:

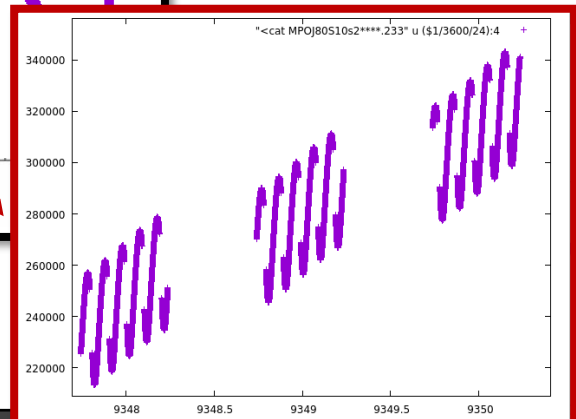
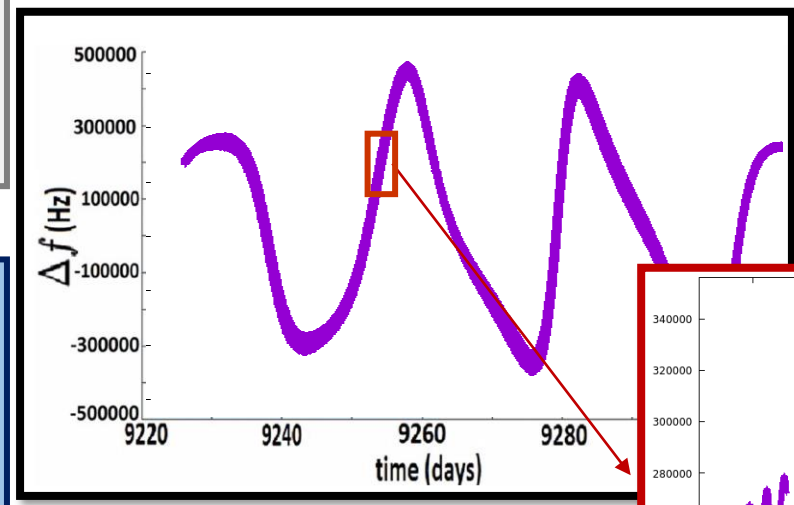
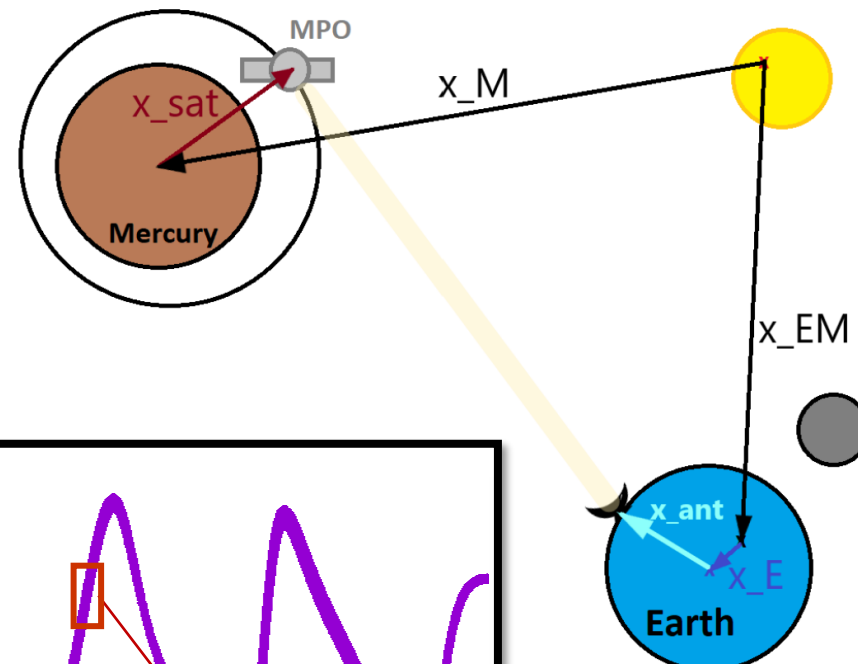
- Mercury gravity field HGM050 d/o 50
- Sun and planets third body gravitational perturbation
- Tidal perturbations (Sun)
- Solar and planetary radiation pressure

### Simulation of Doppler observations:

- 2-way X-band and K-band
- White noise on the observations
- Station and planetary eclipses

### Simulation of accelerometer measurements:

- White and colored noise based on ISA team publications
- Random biases are added to the accelerometer measurements (constant for every two weeks)



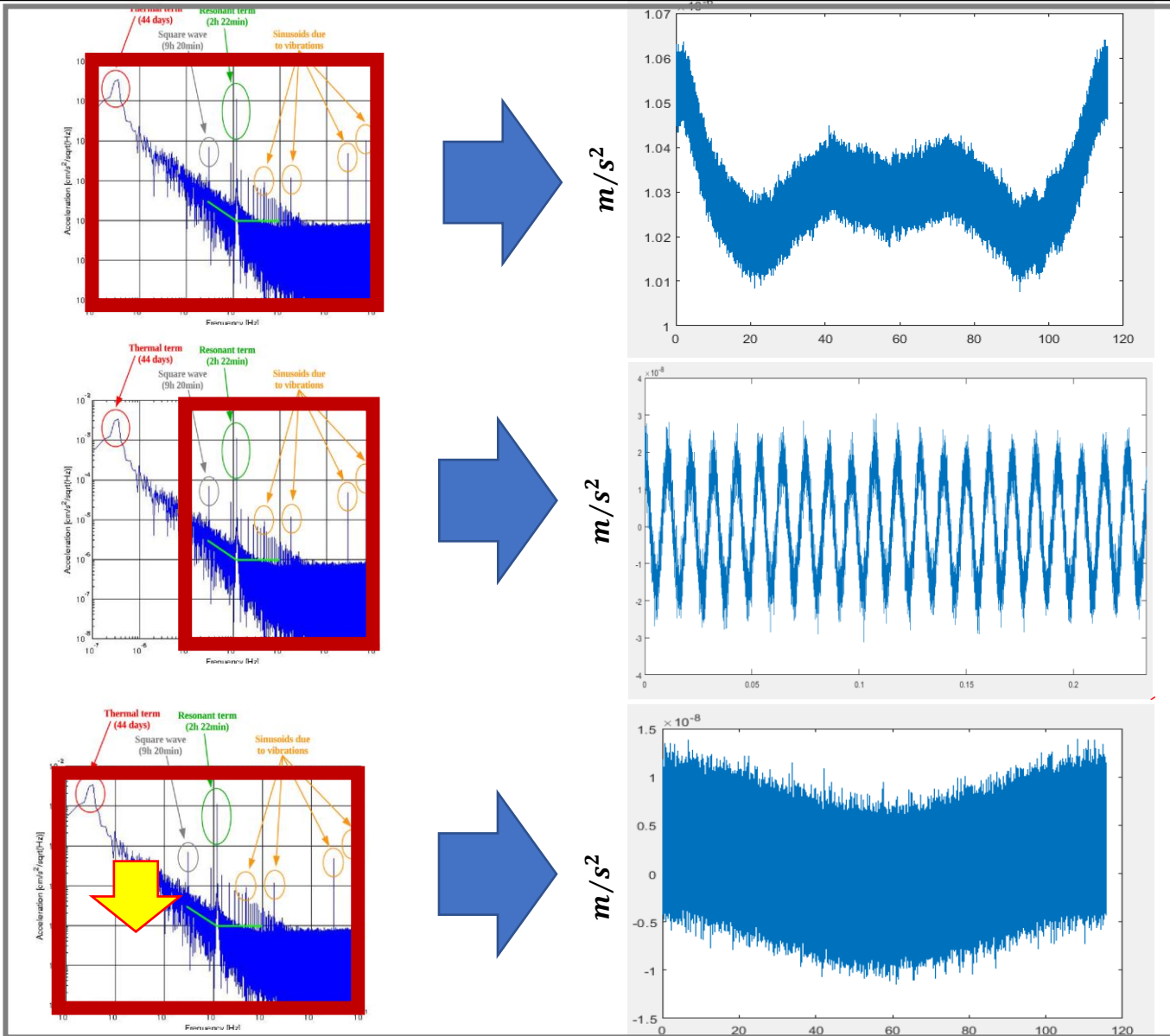
## Parameter estimation

### Assumptions:

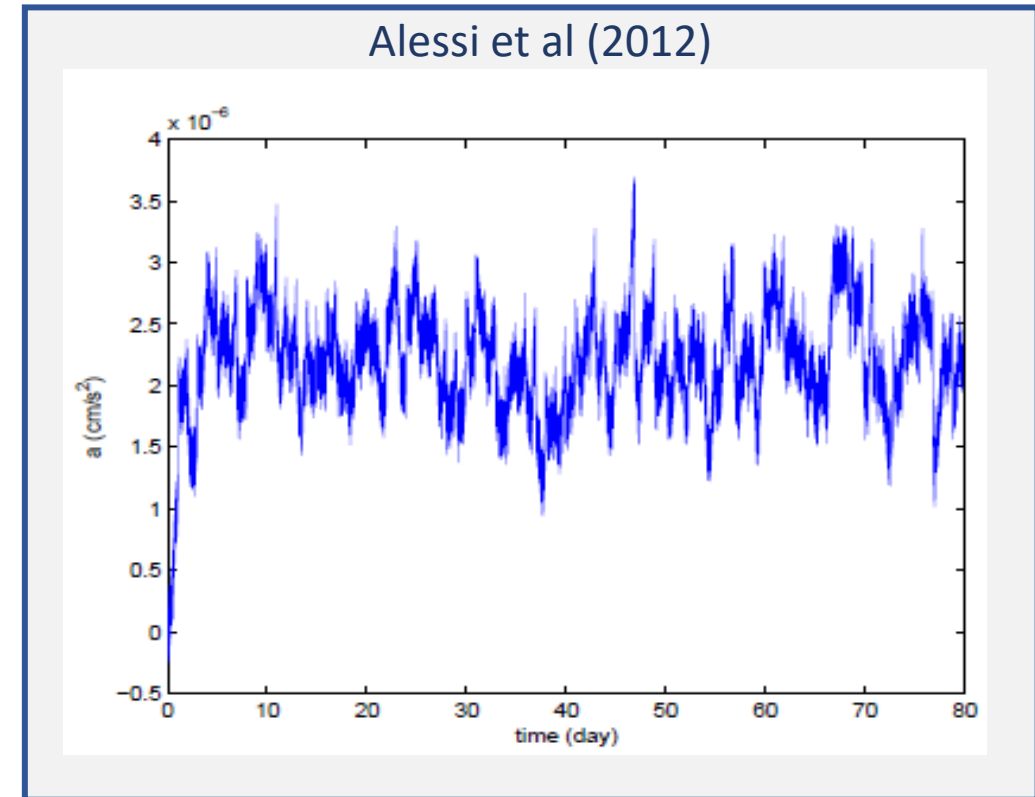
- Error on the initial state vector of each arc
- NO knowledge of non-gravitational forces

### We solve for:

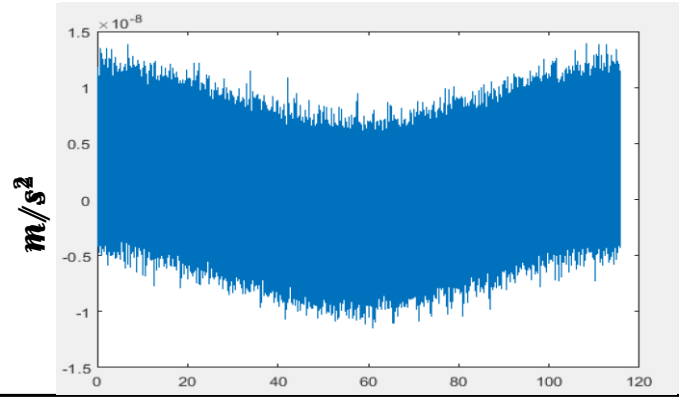
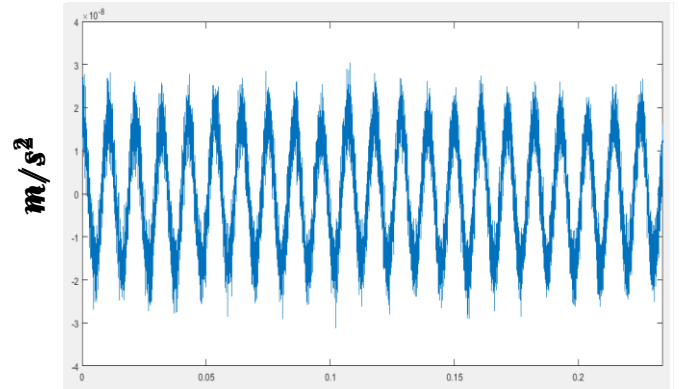
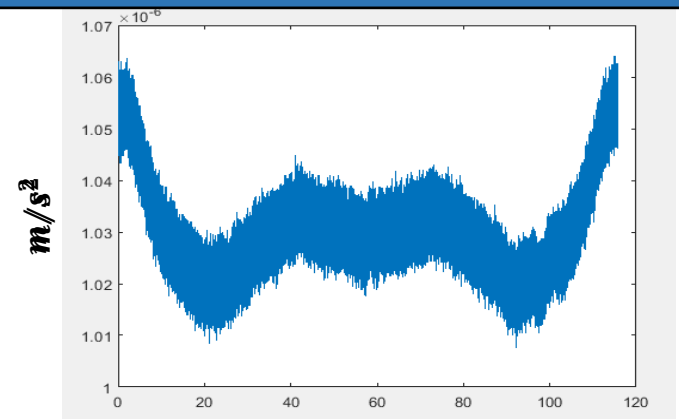
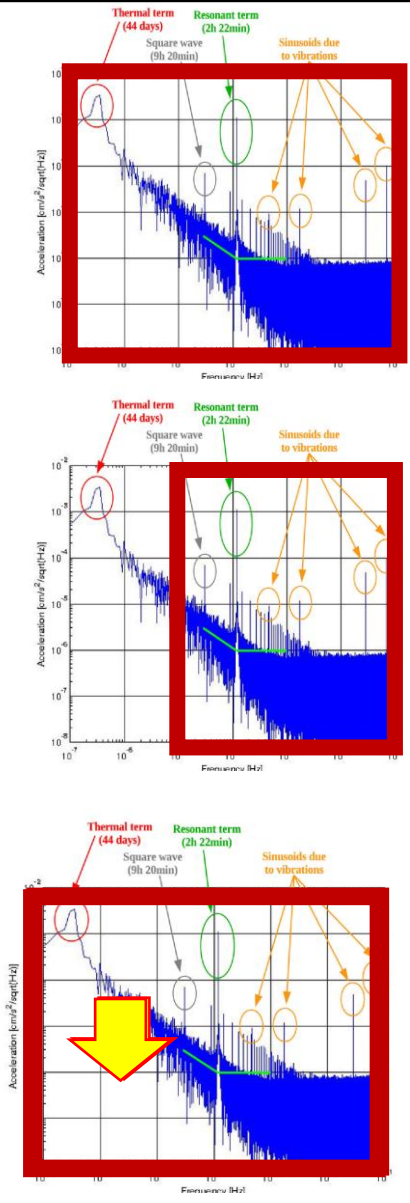
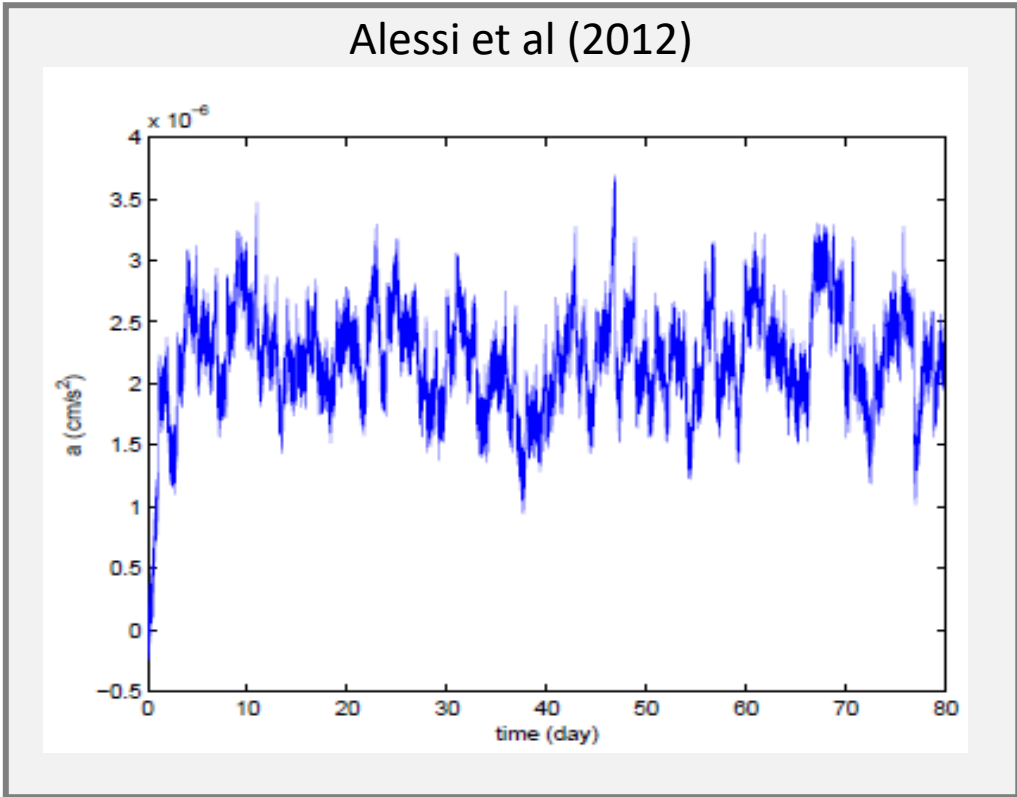
- Initial state vector of the arcs
- Coefficients of the gravity field
- Accelerometer parameters



$$A_{meas} \simeq B + S_f A_{true} + A_{noise}$$

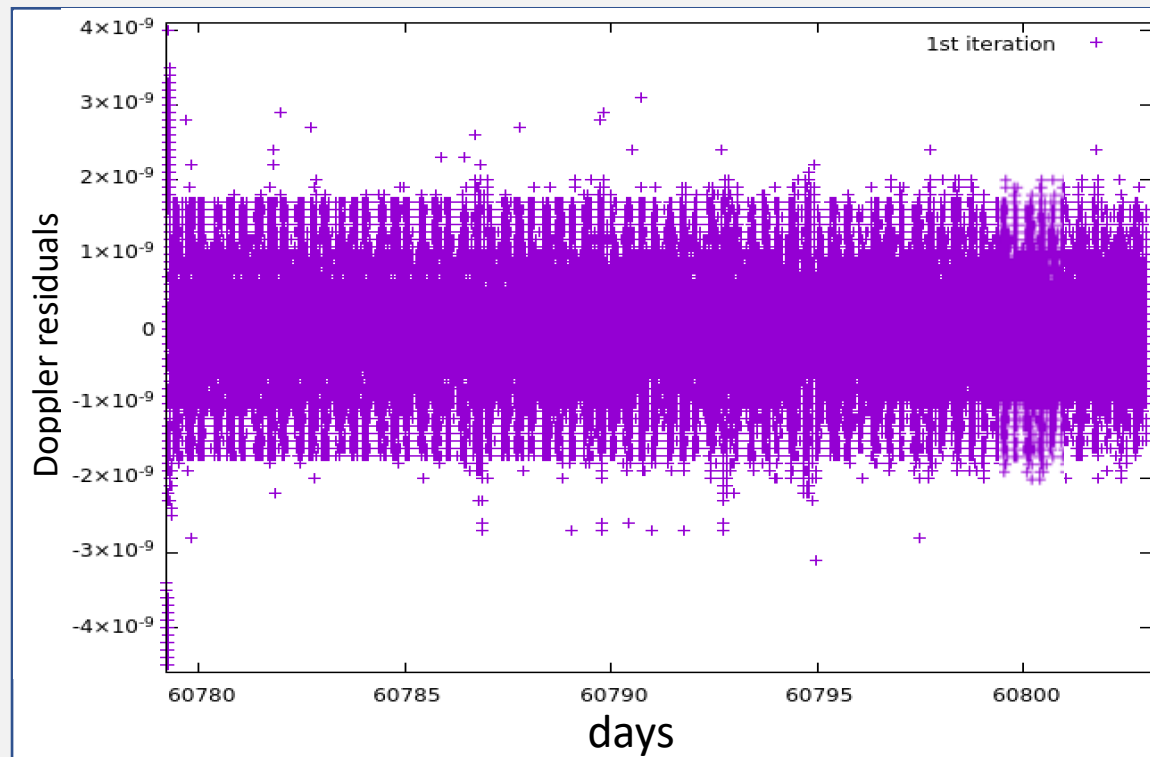


## Accelerometer model

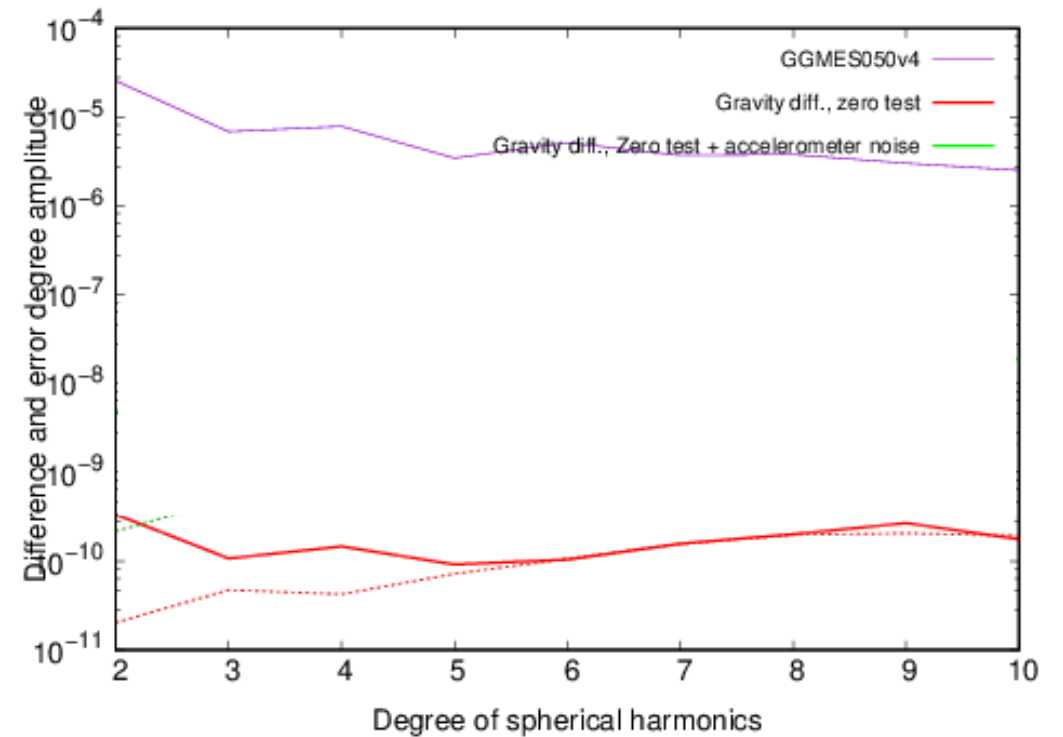


## Zero test: A test for model verification

- No Doppler noise, No initial condition error
- We use the same force model in simulation and parameter estimation
- Doppler residuals are in the order of  $1E-5$  Hz



- A zero-test solution
- We use a gravity field with d/o 10 as synthetic reality as
- We use the same gravity field with d/o 10
- We use 1 month of Doppler observation
- We solve up to d/o 10
- Red: No Doppler noise, No initial error
- Green: Doppler noise , initial error

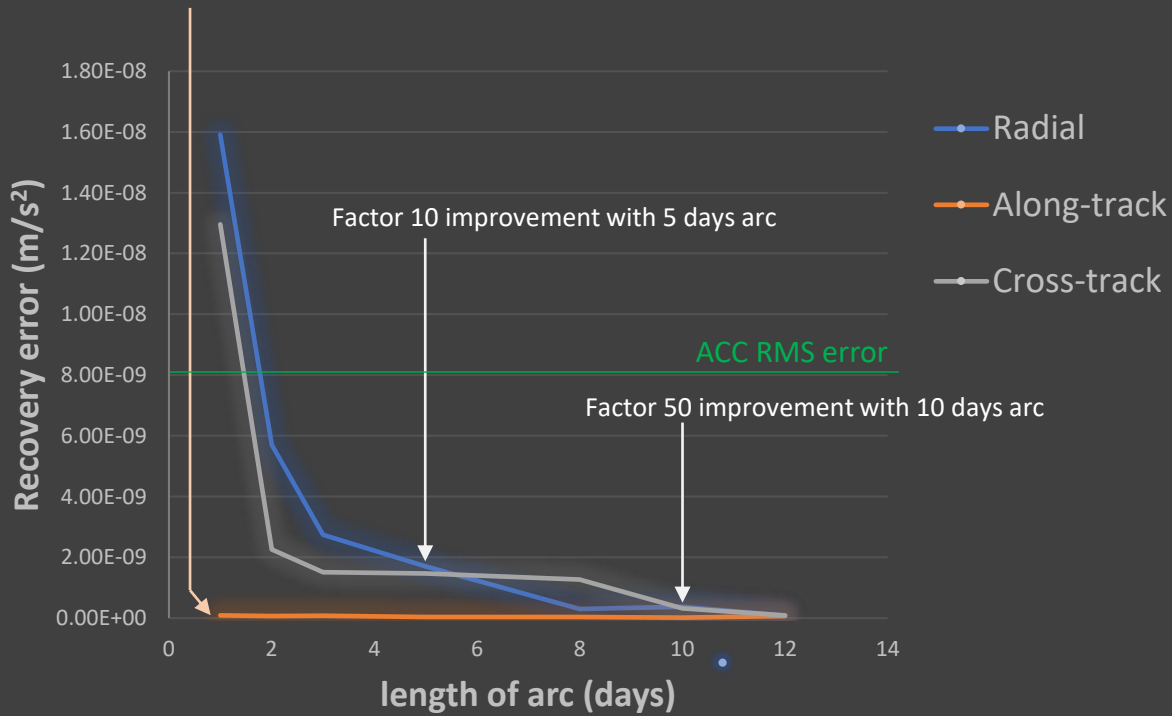


## Sensitivity analysis

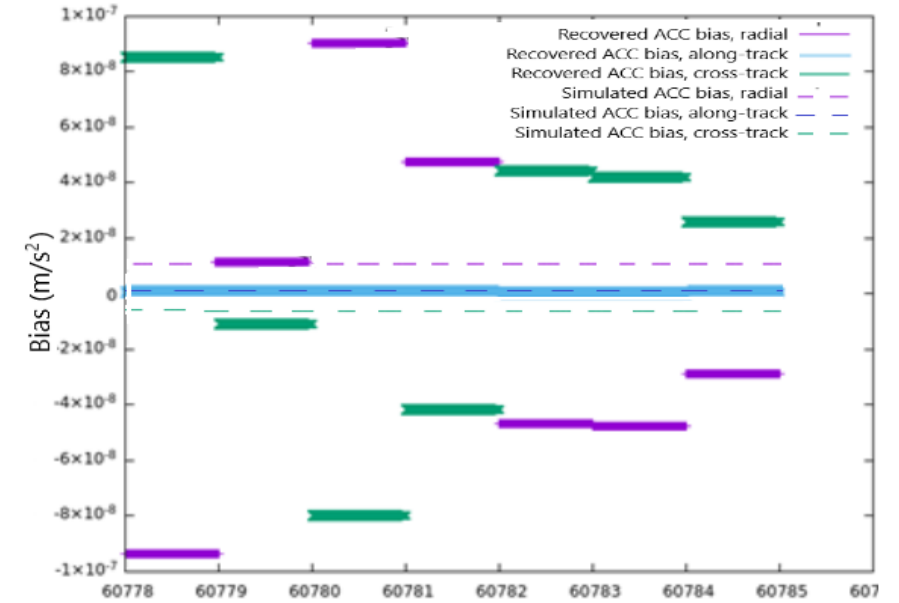
Recovery of the accelerometer parameters to the arc length

### Recovery error of ACC biases as a function of arc length

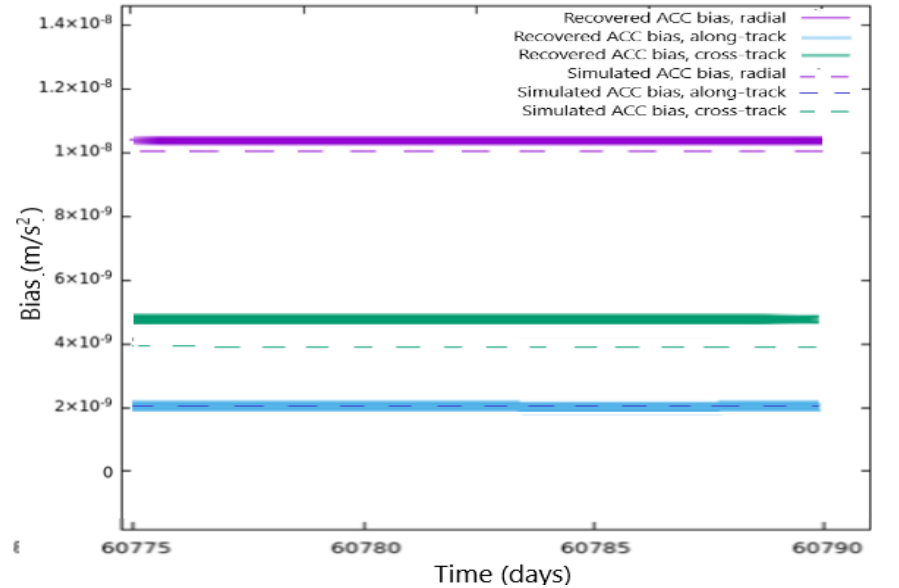
Along-track direction of the ACC bias can be determined with one day arc



Recovery of ACC bias  
Using **1 day** of observation

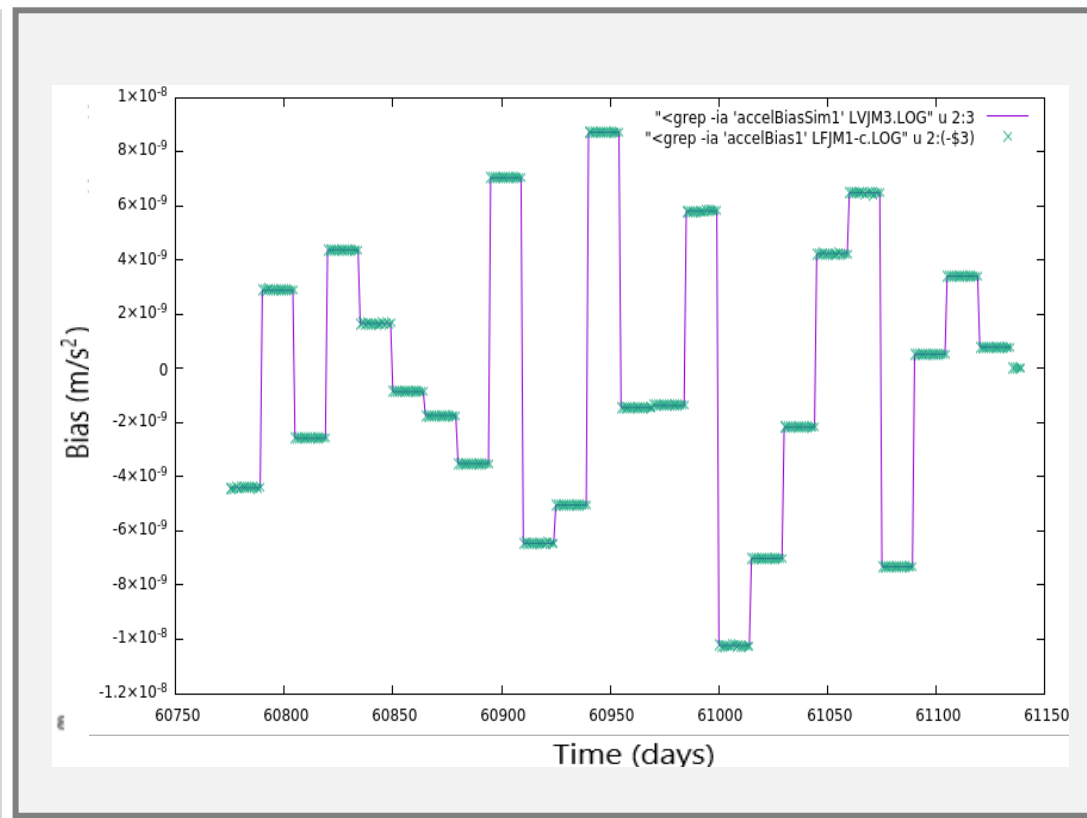
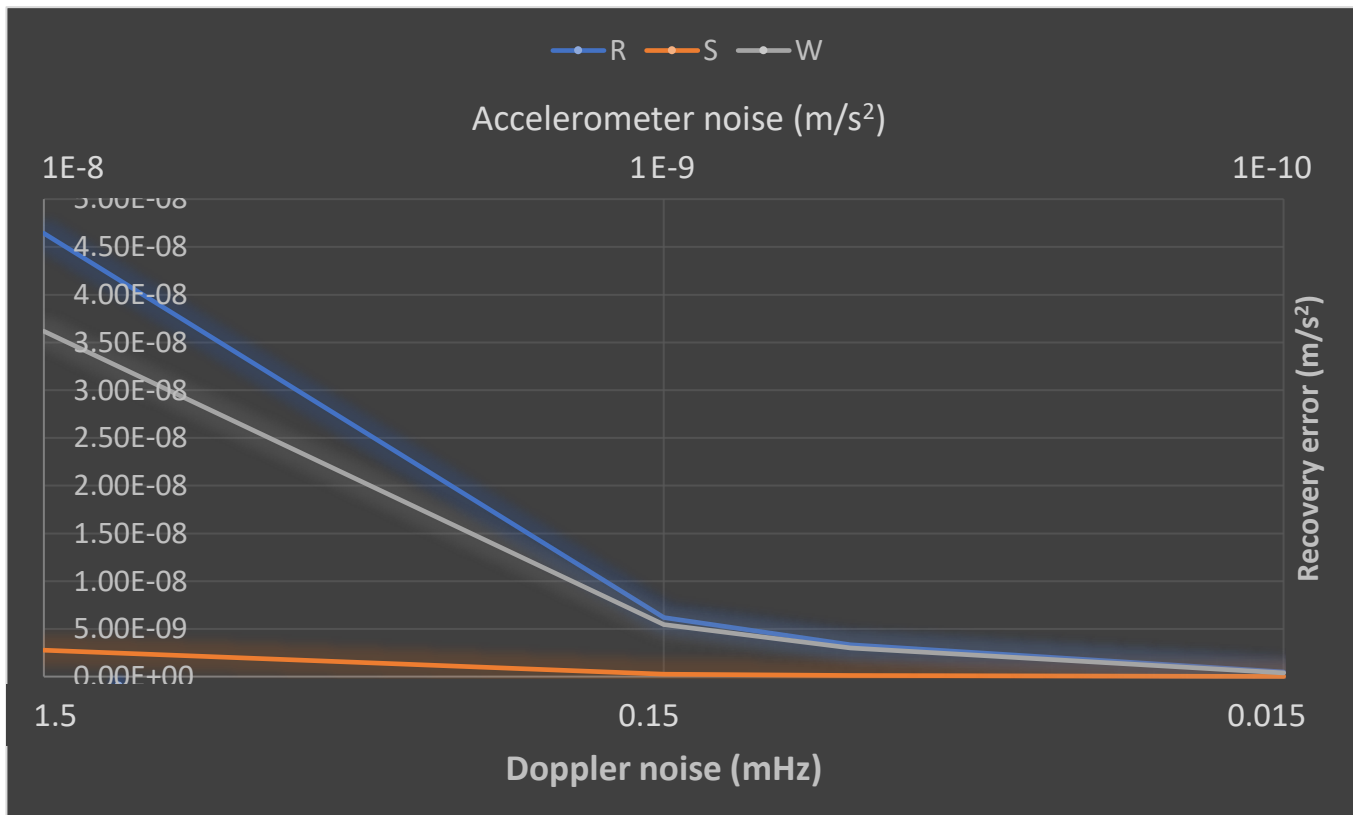


Recovery of ACC bias  
Using **15 days** of observation



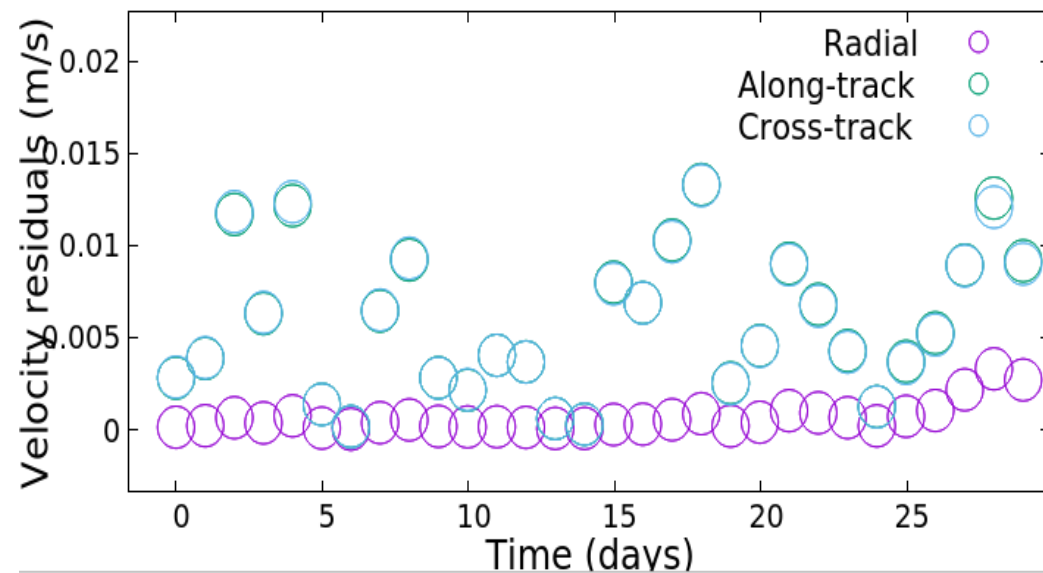
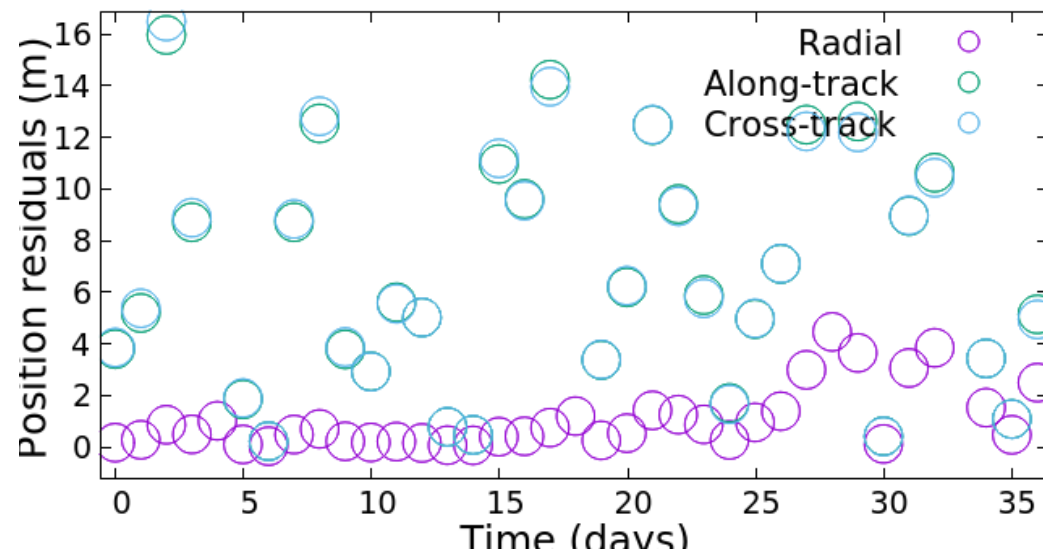
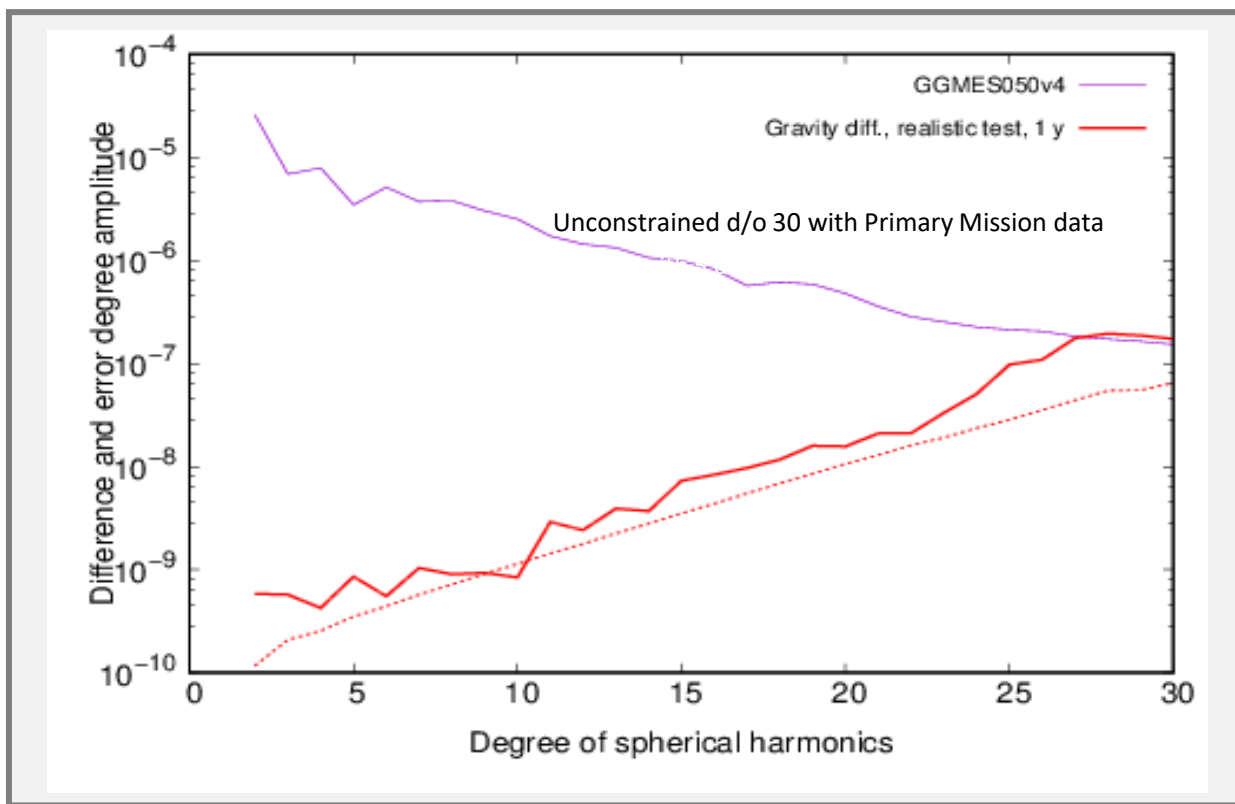
## Sensitivity analysis

Recovery of the accelerometer parameters to the Doppler and accelerometer noise





- Recovery of the gravity field, spacecraft orbit and accelerometer parameters
- At least 5 days of observation for the recovery of the ACC parameters
- Different assumptions on the accelerometer noise and bias lead different results for the recovery of the orbit and the gravity field



- If the a priori field is similar/close to the real field the process is
- If a degraded field is used, accelerometer parameters must be dealt with very carefully.
- If not constrained, the ACC parameters can absorb the unmodelled dynamics and ruin the solution
- Stochastic pulses / empirical accelerations are needed to absorb the unmodelled dynamics and avoid them from going to the ACC parameters.
- One solution is to first solve for the orbit/gravity by ignoring the ACC parameters and solve for them using the recovered field
- Testing different orbit determination strategies
- Full results, including the final accuracy of the gravity/orbit recovery in different cases will be presented in the paper to be submitted