

## **Type 2 diabetes management, control and outcomes during the COVID-19 pandemic in older US Veterans: an observational study**

Carole E. Aubert, MD,<sup>1,2,3,4</sup> James B. Henderson, PhD,<sup>3,5</sup> Eve A. Kerr, MD, MPH,<sup>3,4,6</sup> Rob Holleman, MPH,<sup>3</sup>  
Mandi L. Klamerus, MPH,<sup>3</sup> Timothy P. Hofer, MD, MSc<sup>3,4,6</sup>

<sup>1</sup> Department of General Internal Medicine, Bern University Hospital, Inselspital, University of Bern, Bern, Switzerland;

<sup>2</sup> Institute of Primary Health Care (BIHAM), University of Bern, Switzerland;

<sup>3</sup> Center for Clinical Management Research, Veterans Affairs Ann Arbor Healthcare System, Ann Arbor, MI, USA;

<sup>4</sup> Institute for Healthcare Policy and Innovation, University of Michigan, Ann Arbor, MI, USA;

<sup>5</sup> Consulting for Statistics, Computing & Analytics Research (CSCAR), University of Michigan, Ann Arbor, MI, USA;

<sup>6</sup> Department of Internal Medicine, University of Michigan, Ann Arbor, MI, USA.

**E-mail addresses:** caroleelodie.aubert@insel.ch; jbhender@umich.edu; rob.holleman@va.gov;  
mandi.klamerus@va.gov; thofer@umich.edu; ekerr@umich.edu

**Running title:** Diabetes care during COVID.

**Manuscript category:** Original Research Article.

**Word count:** 2,996

**Abstract word count:** 300

**Number of Tables:** 2

**Number of Figures:** 4

**Number of Appendices:** 1

**Number of references:** 33

**Corresponding author:** Carole E. Aubert, MD, Department of General Internal Medicine, Bern University Hospital, Freiburgstrasse, 3010 Bern; +41 31 632 21 11; caroleelodie.aubert@insel.ch; @aubert\_carole

**Key words:** hypertension, treatment, deintensification, elderly, Veterans.

## ABSTRACT

**Background:** The COVID-19 pandemic required a change in outpatient care delivery models, including shifting from in-person to virtual visits, which may have impacted care of vulnerable patients.

**Objective:** To describe the changes in management, control and outcomes in older people with type 2 diabetes (T2D) associated with the shift from in-person to virtual visits.

**Design and participants:** In Veterans aged  $\geq 65$  years with T2D, we assessed the rates of: visits (in-person, virtual), A1c measurements, antidiabetic deintensification/intensification, ER visits and hospitalizations (for hypoglycemia, hyperglycemia, other causes), and A1c level, in March 2020 and April-November 2020 (pandemic period). We used negative binomial regression to assess change over time (reference: pre-pandemic period, July 2018 to February 2020), by baseline Charlson Comorbidity Index (CCI;  $\geq 2$  vs.  $< 2$ ) and A1c level.

**Key results:** Among 740,602 Veterans (mean age 74.2 [SD 6.6] years), there were 55% (95%CI 52-58%) fewer in-person visits, 821% (95%CI 793-856%) more virtual visits, 6% (95%CI 1-11%) fewer A1c measurements, and 14% (95%CI 10-17%) more treatment intensification during the pandemic, relative to baseline. Patients with CCI  $\geq 2$  had a 14% (95%CI 12-16%) smaller relative increase in virtual visits than those with CCI  $< 2$ . We observed a seasonality of A1c level and treatment modification, but no association of either with the pandemic. After a decrease at the beginning of the pandemic, there was a rebound in other-cause (but not hypo- and hyperglycemia-related) ER visits and hospitalizations from June to November 2020.

**Conclusion:** Despite a shift to virtual visits and decrease in A1c measurement during the pandemic, we observed no association with A1c level or short-term T2D-related outcomes providing some reassurance about the adequacy of virtual visits. Further studies should assess the longer-term effects of shifting to virtual visits in different populations to help individualize care, improve efficiency and maintain appropriate care while reducing overuse.

## INTRODUCTION

The pandemic caused by the novel coronavirus disease (COVID-19) threatened to overwhelm healthcare facilities in early hot-spots, and led to a wide-spread shift of priorities in healthcare.<sup>1</sup> Healthcare resources were shifted away from chronic disease management and prevention, to support intensive care expansions.<sup>2-4</sup> This is likely to have affected regular follow-up of patients with chronic conditions, such as diabetes, and concerns have been raised about indirect consequences of the COVID-19 pandemic on progression and complications of chronic conditions.<sup>5-</sup>

7

Virtual (i.e., video and telephone) visits replaced most in-person visits during the initial phase of the pandemic.<sup>4</sup> While virtual visits may provide a quality of care similar to in-person visits for some disease states and specialties, it is not possible in a virtual visit to complete a full physical examination or laboratory testing, and thus virtual visits are clearly not appropriate for all situations. Clinicians and patients may both have favored virtual visits for older adults with type 2 diabetes (T2D) in the pandemic, as they are at higher risk of infection and worse outcomes from COVID-19.<sup>8,9</sup>

People with T2D experienced changes in the frequency of visits and lab tests and visit modality in reaction to the pandemic. This offered the opportunity to study the association of these changes to T2D care processes and short-term outcomes. From July 2018 to November 2020, we computed the monthly rates of visits (in-person, virtual, total), A1c measurements, A1c level, antidiabetic deintensification and intensification, and ER visits and hospitalizations.

## METHODS

### *Study population*

As part of a previous study examining appropriate use of medications and treatments, we had identified a national sample of active users of the Veterans Health Administration (VHA) between 10/01/2013 and 09/30/2015 with follow-up data through end of 2020,<sup>10</sup> with following inclusion criteria:  $\geq 1$  visit at any clinic location (known as ‘stop codes’) and  $\geq 2$  visits with one of the following stop codes: primary care (322, 323, 348, 350, 531) or specialty care (303, 305, 306, 309, 310, 312). For the current study, we selected from this cohort all Veterans  $\geq 65$  years with T2D, still active users of the VHA between 01/01/2018 and 12/31/2019 (to allow for at least 2 months of follow-up before pandemic start),<sup>11,12</sup> and with  $\geq 1$  T2D-management visit during this period (definition below). T2D was defined as 1) two separate outpatient visits with an International Classification of Diseases Tenth Revision (ICD-10) T2D diagnosis code (ICD-10 E11); or 2) one acute inpatient visit with a T2D ICD-10 code; or any ambulatory fill of an antidiabetic between 10/01/2013 and 12/31/2019. To account for a natural reduction in the sample cohort with time, we assessed whether patients were still active users of the VHA during each month of the study period (07/01/2019 to 11/30/2020), and describe all numbers relative to the number of active users. This study was approved by the Ann Arbor VA Healthcare System IRB. Support for VA/CMS data provided by the Department of Veterans Affairs, VA Health Services Research and Development Service, VA Information Resource Center (Project Numbers SDR 02-237 and 98-004).

### *Measures*

We developed an algorithm using VA stop codes and Evaluation and Management (E/M) Current Procedural Terminology codes to identify the type of care and method of care delivery (**Supplemental Text 1, Figure 1**). First, we selected visits containing an outpatient E/M code to identify provider visits where decision-making related to evaluation and management occurs.

Second, we used VA stop codes to identify primary care, geriatrics, and endocrinology visits. Third, we used stop codes to identify visits to providers most likely to manage T2D (physician, nurse practitioner, physician assistant). Fourth, we identified stop codes specific to virtual visits. Fifth, we identified E/M codes specific to virtual visits (because a few visits were coded with 2 stop codes not mentioning virtual visits, but these E/M codes are specific to virtual visits). Sixth, we excluded E/M codes specific to virtual visits paired to the VA stop code “319 MHV Secure Messaging”, since this does not usually involve decision-making or real-time communication. Finally, we classified those visits as in-person or virtual. Virtual visits included telephone and video visits, but not messaging. We defined baseline visit for each patient as the first visit between 01/01/2018 and 12/31/2019. We aggregated visits into monthly counts for in-person, virtual, and total visits, respectively.

We computed the Charlson Comorbidity Index (CCI) using ICD codes, and classified patients into two groups of morbidity severity ( $\leq 2$  vs.  $> 2$ ), based on predicted mortality rates in the original publication.<sup>13</sup> We defined four A1c categories to evaluate T2D control, based on VA guidelines for T2D management and our previous analysis on T2D overtreatment:<sup>14,15</sup>  $< 6.0\%$ ,  $6.0-6.9\%$ ,  $7.0-8.4\%$ ,  $\geq 8.5\%$ . Baseline A1c was defined as the closest measurement within 6 months of baseline visit.

We used VA pharmacy fills to assess antidiabetic change each month. As previously,<sup>14</sup> we defined deintensification as decreasing the number or dose of previously prescribed antidiabetics (no refill of an antidiabetic, or refill at lower dose, within 180 days of the first of each month). We defined intensification as a fill for a new antidiabetic, or refill at higher dose. Deintensification was compared to no deintensification, for patients being treated with  $\geq 1$  antidiabetic other than metformin. Intensification was compared to no intensification for all patients.

We classified ER visits and hospitalizations as related to hypoglycemia (ICD-10 codes: E11.64, E11.641, E11.649) or hyperglycemia (ICD-10 codes: E11.65, E11.0, D11.00, E11.01, E11.1, E11.10, E11.11).

### *Time periods*

To assess the impact of the pandemic, we compared the measures in March 2020 (pandemic declaration month), and April-November 2020 (pandemic period), to a pre-pandemic period (July 2018 to February 2020). The pre-pandemic period started 6 months after inclusion start date, to allow for a look-back period for A1c measurements.

### *Statistical analyses*

For each calendar month, aggregating all patients, we assessed the visit (in-person, virtual, total visits), A1c measurement, deintensification, intensification, ER visit and hospitalization rates, and the proportions of in-person/virtual visits and of patients in each A1c category. Each rate was the number per 1,000 patients active at the VHA during that month. To assess differences according to T2D control and comorbidity severity, we conducted stratified analyses by baseline CCI ( $\leq 2$  vs.  $> 2$ ) and A1c category. A1c categories were used as a time-varying covariate: for each month, we determined the A1c category for each patient using the most recent A1c measurement within 6 months.

We used negative binomial regression to compare monthly rates and proportions during pandemic declaration month and the pandemic period, compared to baseline. We used a piecewise linear time basis (e.g., an interaction between categorical and linear time) to model time-trends relative to the pandemic (exposure: monthly number of active patients) with robust variance to account for autocorrelation. To account for seasonality in the distribution among A1c categories, A1c measurement rates, deintensification, intensification, ER visits and hospitalizations, we included variables representing a basis expansion of the calendar month (K variables forming a periodic cubic regression spline basis of dimension  $4+2$  and period 12, with the dimension chosen to minimize Akaike information criterion (AIC)).<sup>16</sup> We adjusted all analyses for CCI, A1c category, and region (North, South, East, West). We assessed for interactions between time variables themselves, and CCI and A1c categories in the stratified analyses, and retained the model with the

lower AIC for each outcome. We presented results as incidence rate ratios (IRRs) with 95% confidence intervals (CI). For the stratified analyses, we presented the relative risk ratios and difference in absolute difference in rates, comparing CCI >2 to  $\leq 2$ , and each A1c category to 7.0-8.4% category. For ER visits and hospitalizations, we introduced an additional variable for the reason for care (hypoglycemia, hyperglycemia, other-cause), and presented the results as relative risk ratios for hypoglycemia or hyperglycemia versus other causes. We performed all analyses with Stata/MP 15.1 (StataCorp).

## RESULTS

### *Study population*

Among 740,602 Veterans, mean age was 74.2 years at baseline (**Table 1**). Baseline A1c was 6.0-8.4% in 72% of patients. Patients with CCI  $\geq 2$  (N=281,576, 38%) were slightly older than those with CCI  $< 2$  (mean age 74.8 vs. 73.8 years,  $p < 0.001$ ).

### *Composition and volume of visits*

There were 55% (95%CI 52-58%) fewer in-person and 824% (95% CI 793- 856%) more virtual visits, with a net result of 10% (95%CI 7-13%) more total visits in April-November 2020 compared to pre-pandemic (**Table 2**). Pre-pandemic, 90% of visits were in-person and 10% virtual (**Supplemental Figure 1**). The proportion of in-person visits dropped in March 2020 and reached a nadir of 7% in April 2020. In-person visits started to increase again but did not reach pre-pandemic proportions before declining again from October-November 2020, coinciding with COVID-19 second surge (**Figure 2**). Patients with CCI  $\geq 2$  had a 14% (95%CI 12-16%) smaller relative increase in virtual visits, while the reduction in in-person visits was not different. The relative change in visit rates did not differ according to A1c level, but patients without recent A1c measurement showed different trajectories (e.g., larger drop in in-person and total visits; **Figure 2, Supplemental Tables 1&2**).

### *A1c measurements*

A1c measurement rates were 31% (95%CI 28-34%) lower in March 2020, and 96% (95%CI 1-11%) lower on average in April-November 2020 (**Table 2, Figure 3**). The nadir was in April 2020. There was no difference in change in A1c measurement rates according to CCI or A1c level. We observed a second drop in measurements from October-November 2020, corresponding to the second surge.



### *Diabetes control and treatment modification*

We detected a seasonal effect of A1c levels: peak in January, nadir in October, but no association with the pandemic (**Supplemental Figure 2**). We observed a corresponding seasonal effect in treatment modification: more intensification in Winter, more deintensification in Summer (**Figure 4, Supplemental Figures 3&4**). Compared to baseline, deintensification rates were not different during the pandemic, while intensification rates increased by 14% (95%CI 10-17%; **Table 2**). The relative increase was slightly smaller in patients with CCI  $\geq 2$ , compared to those with CCI  $< 2$ , and in those without A1c measurement, compared to those with A1c 7.0- 8.4%. (**Table 2, Supplemental Tables 1&2**). There was a relative increase in deintensification during the pandemic in patients without A1c measurement, compared to those with A1c 7.0-8.4%.

### *ER visits and hospitalizations*

Following a drop in other-cause (but not hypo- and hyperglycemia-related) ER visits and hospitalizations in March-May 2020, we observed a rebound in June-November 2020 (**Supplemental Table 3, Supplemental Figure 5**).

## DISCUSSION

In over 740,000 older Veterans with T2D, we found a dramatic increase in virtual visits involving clinical decision-making for T2D care during the pandemic, overcompensating for the drop in in-person visits. Before the pandemic, 90% of visits were in-person, while in April 2020, over 90% of visits took place virtually. There was an expected parallel drop in A1c measurement rates, and a slight increase in intensification rates. These modifications in management and care did not affect T2D control or hypoglycemia- or hyperglycemia-related ER visits and hospitalizations.

The decrease in in-person visits and increase in virtual visits was expected and comparable to what was observed in other healthcare systems in the US,<sup>17-21</sup> although large differences according to specialties have been described.<sup>20</sup> However, the increased total visits in the first wave of the pandemic was less expected and has not been described, but previous analyses were often limited to the early months of the pandemic or used commercially insured population with different reimbursement conditions than in the VHA.<sup>17-21</sup> In November 2020 (second surge), we observed a second drop in in-person visits and A1c measurements, but smaller than the first, and not overcompensated by virtual visits, suggesting more familiarity with virtual visits, along with better understanding of COVID-19 risks and access to adequate protection.

It is unclear why there would be more total visits in the first surge of COVID-19 and unfortunately the VA scheduling package contains little or no information about the reasons for visits. There are several potential explanations which may individually or collectively have led to this increase in visits, which at this point are only speculative. First, lack of familiarity with virtual visits may have led to providers to feel a need for more frequent follow-up. Second, there was concern about a mental health crisis among older adults, given the disruptions in access to care and greater social isolation and loneliness (often compounded by challenges in using digital technologies). Third, patients with T2D are not only at higher risk of complications and worse outcomes of COVID-19,<sup>8,9</sup> but also of depression.<sup>22-24</sup> Unable to provide usual care, clinicians may

have increased the number of visits for their high-risk patients to provide the best care possible. Fourth, the availability of telephone care as an accepted virtual modality for follow-up may have decreased barriers to follow-up. Finally, patients potentially psychologically or physiologically impacted by the pandemic might have required and requested more care.

Patients with more comorbidities had a smaller relative increase in virtual visit rates with little difference in in-person visit rates. However, in comparison to their baseline virtual visit rates, patients with more comorbidities had a larger increase in virtual visit rates and larger decreases in in-person visit rates. Those patients may have worse access to, or less readiness to use telehealth: 38% of older American adults would not be ready to use video visits, mostly because of inexperience with technology.<sup>25</sup> This proportion increases with age, from 25% among the 65–74 year-old age group to 72% in the  $\geq 85$  year-old age group.<sup>25</sup> Patients with higher CCI were older, which may have further contributed to reduced access to, or willingness to use virtual visits. Increased concern for exposure to COVID-19, may well have contributed to the relatively larger decline for in-person visits among those with more comorbidities.

Despite a drop in A1c measurement rates, we did not observe an effect on T2D control, as measured by A1c levels. The reduction in measurement may not have been long enough to affect T2D control, or clinicians may have been able to adjust treatment based on home blood sugar measurements reported by patients. This would be consistent with the observed increase in intensification rates during the pandemic. While this bodes well for the use of virtual visits to address T2D management, we were not able to observe the association of virtual visits and less frequent A1c measurement with longer-term outcomes. Change in A1c measurement rates was not different according to CCI score or A1c level. We might expect that providers would want relatively more frequent A1c measurements for patients with a higher A1c level or more comorbidities to maintain good T2D control. However, those same patients were also at higher risk of COVID-19 complications. Fear of the risk of COVID exposure with coming to the laboratory for a test, or

provider willingness to tolerate higher A1c levels in sicker patients with shorter life expectancy during the pandemic may have prevented relatively higher rates of A1c testing.

A seasonal effect on A1c levels has been reported previously, and is likely related to diet and physical activity modifications during the holiday and with colder weather. We observed similar patterns for treatment modification, suggesting that clinicians are reacting to A1c levels. The increase in intensification rates during the pandemic, beyond seasonal trends, suggest higher adherence or that providers felt able to actively manage patients in a period with high proportion of virtual visits.

Patients without A1c measurement within the previous 6 months showed different trajectories in visit and treatment modification rates: an overall decrease in visit rates and intensification, and an increase in deintensification, suggesting that this subpopulation included patients no longer receiving routine T2D care at the VHA (as deintensification is defined by the lack of refill). The algorithm we use for identifying active users can only identify inactive users after a defined period without any utilization of VA services, during which they are still counted as active users. There is no incentive to formally dis-enroll from VA care as there is no charge for being enrolled.

We observed a drop in other-cause ER visits and hospitalizations at the beginning of the pandemic, followed by a rebound increase. Previous data showed a drop in non-COVID-related ER visits and hospitalizations during the pandemic, but studied the beginning of the pandemic only.<sup>26,27</sup> Our results are consistent with those findings. The rebound effect was not observed for hypoglycemia- and hyperglycemia-related ER visits and hospitalizations. Patients may have gone outside VHA for medical issues requiring immediate attention related to T2D, although it is not clear why they would have done this to a greater extent during the pandemic.

### *Strengths and limitations*

First, we could not distinguish between deintensification due to a clinician decision vs. patient nonadherence. This is a limitation of any retrospective observational study using pharmacy fills. Yet, deintensification tells us whether the patient is taking the medication or not, as pharmacy fills are able to measure medication consumption.<sup>28,29</sup> Second, we had no information on home blood sugar records that may have contributed to clinicians' decisions to modify antidiabetics. Third, since Medicare data were not yet available, ER visits and hospitalizations occurring outside VHA were not captured. Finally, we could not account for other factors that may have affected T2D outcomes, such as modifications in diet or physical activity related to social distancing.

Our study has several strengths. First, our sample was large and representative of all US regions. Second, we adjusted all measures to account for the number of active users of the VHA each month, avoiding biasing the results towards lower numbers due to a natural decrease in total sample. Third, our study period was long enough to compare the measures during the pandemic period to natural trends before the pandemic. Finally, we assessed several outcomes allowing the evaluation of T2D management, control, and outcomes.

### *Conclusion*

Despite a dramatic shift to virtual visits and a decrease in A1c measurement rates during the pandemic, we did not observe an effect on T2D control or short-term T2D-related outcomes which provides some reassurance about the adequacy of virtual visits. Further studies should assess the longer-term effects of shifting to virtual visits in specific patient to help to individualize care, improve efficiency and maintain appropriate care while reducing overuse.

## **ACKNOWLEDGEMENTS**

**Funders:** This study was funded by Department of Veterans Affairs Health Services Research and Development IIR 15-131. The funding agency had no role in the design and conduct of the study; collection, management, analysis, and interpretation of the data; preparation, review, or approval of the manuscript; and decision to submit the manuscript for publication. Dr. Aubert was supported by an Early Postdoc.Mobility grant from the Swiss National Science Foundation (grant P2LAP3\_184042).

## REFERENCES

1. Moreland A, Herlihy C, Tynan MA, et al. Timing of State and Territorial COVID-19 Stay-at-Home Orders and Changes in Population Movement — United States, March 1–May 31, 2020. *MMWR Morb Mortal Wkly Rep* 2020;69:1198–1203.
2. Mehrota A, Chernew M, Linetsky D, Hatch H, Cutler D. The Impact of the COVID-19 Pandemic on Outpatient Visits: A Rebound Emerges. 2020. The Commonwealth Fund.
3. <https://www.cdc.gov/coronavirus/2019-ncov/hcp/framework-non-COVID-care.html>. Accessed 02/14/2020.
4. Danhieux K, Buffel V, Pairon A, et al. The impact of COVID-19 on chronic care according to providers: a qualitative study among primary care practices in Belgium. *BMC Fam Pract* 2020;21:255.
5. Kendzerska T, Zhu DT, Gershon AS, et al. The Effects of the Health System Response to the COVID-19 Pandemic on Chronic Disease Management: A Narrative Review. *Risk management and healthcare policy* 2021;14:575-84.
6. Irmak AY, Çelikkalp Ü, Ekuklu G. Evaluation of the chronic disease management and depression levels of people over 65 years of age during the COVID-19 pandemic period. *Perspect Psychiatr Care* 2020.
7. Wright A, Salazar A, Mirica M, Volk LA, Schiff GD. The Invisible Epidemic: Neglected Chronic Disease Management During COVID-19. *Journal of general internal medicine* 2020;35:2816-7.
8. Wang B, Li R, Lu Z, Huang Y. Does comorbidity increase the risk of patients with COVID-19: evidence from meta-analysis. *Aging (Albany NY)* 2020;12:6049-57.
9. Shahid Z, Kalayanamitra R, McClafferty B, et al. COVID-19 and Older Adults: What We Know. *J Am Geriatr Soc* 2020;68:926-9.
10. Kerr EA, Klammer ML, Markovitz AA, et al. Identifying Recommendations for Stopping or Scaling Back Unnecessary Routine Services in Primary Care. *JAMA Intern Med* 2020.
11. Beard AJ, Hofer TP, Downs JR, et al. Assessing appropriateness of lipid management among patients with diabetes mellitus: moving from target to treatment. *Circ Cardiovasc Qual Outcomes* 2013;6:66-74.
12. Kerr EA, Lucatorto MA, Holleman R, Hogan MM, Klammer ML, Hofer TP. Monitoring performance for blood pressure management among patients with diabetes mellitus: too much of a good thing? *Arch Intern Med* 2012;172:938-45.
13. Charlson ME, Pompei P, Ales KL, MacKenzie CR. A new method of classifying prognostic comorbidity in longitudinal studies: development and validation. *Journal of chronic diseases* 1987;40:373-83.
14. Sussman JB, Kerr EA, Saini SD, et al. Rates of Deintensification of Blood Pressure and Glycemic Medication Treatment Based on Levels of Control and Life Expectancy in Older Patients With Diabetes Mellitus. *JAMA Intern Med* 2015;175:1942-9.
15. <https://www.uspreventiveservicestaskforce.org/uspstf/recommendation/colorectal-cancer-screening> Accessed August 17 2020.
16. Akaike, H. (1973). Information theory and an extension of the maximum likelihood principle. In B. N. Petrov & F. Csaki (Eds.), *Proceedings of the Second International Symposium on Information Theory* (pp. 267-281). Budapest: Akademiai Kiado.
17. Mehrotra A, Chernew M, Linetsky D, Hatch H, Cutler D. The impact of the COVID-19 pandemic on outpatient visits: a rebound emerges. New York, NY: Commonwealth Fund; 2020. <https://www.commonwealthfund.org/publications/2020/apr/impact-covid-19-outpatient-visitsexternal> icon.

18. Koonin LM, Hoots B, Tsang CA, et al. Trends in the Use of Telehealth During the Emergence of the COVID-19 Pandemic - United States, January-March 2020. *MMWR Morb Mortal Wkly Rep* 2020;69:1595-9.
19. Adepoju OE, Chae M, Ayadi MF, Matuk-Villazon O, Liaw W. Early Impacts of the COVID-19 Pandemic on Telehealth Patterns in Primary Care, Mental Health, and Specialty Care Facilities in Texas. *South Med J* 2021;114:593-6.
20. Bestsenny O, Gilbert G, Harris A, Rost J. Telehealth: A quarter-trillion-dollar post-COVID-19 reality? 2021. <https://www.mckinsey.com/industries/healthcare-systems-and-services/our-insights/telehealth-a-quarter-trillion-dollar-post-covid-19-reality>. Accessed 09/11/2021.
21. Patel SY, Mehrotra A, Huskamp HA, Uscher-Pines L, Ganguli I, Barnett ML. Trends in Outpatient Care Delivery and Telemedicine During the COVID-19 Pandemic in the US. *JAMA Intern Med* 2021;181:388-91.
22. Bădescu SV, Tătaru C, Kobylinska L, et al. The association between Diabetes mellitus and Depression. *J Med Life* 2016;9:120-5.
23. Anderson RJ, Freedland KE, Clouse RE, Lustman PJ. The prevalence of comorbid depression in adults with diabetes: a meta-analysis. *Diabetes care* 2001;24:1069-78.
24. Holt RI, de Groot M, Golden SH. Diabetes and depression. *Curr Diab Rep* 2014;14:491.
25. Lam K, Lu AD, Shi Y, Covinsky KE. Assessing Telemedicine Unreadiness Among Older Adults in the United States During the COVID-19 Pandemic. *JAMA Intern Med* 2020;180:1389-91.
26. Nourazari S, Davis SR, Granovsky R, et al. Decreased hospital admissions through emergency departments during the COVID-19 pandemic. *Am J Emerg Med* 2021;42:203-10.
27. Hartnett KP, Kite-Powell A, DeVies J, et al. Impact of the COVID-19 Pandemic on Emergency Department Visits - United States, January 1, 2019-May 30, 2020. *MMWR Morb Mortal Wkly Rep* 2020;69:699-704.
28. Grymonpre R, Cheang M, Fraser M, Metge C, Sitar DS. Validity of a prescription claims database to estimate medication adherence in older persons. *Med Care* 2006;44:471-7.
29. Anghel LA, Farcas AM, Oprean RN. An overview of the common methods used to measure treatment adherence. *Med Pharm Rep* 2019;92:117-22.
30. Ferguson JM, Jacobs J, Yefimova M, Greene L, Heyworth L, Zulman DM. Virtual care expansion in the Veterans Health Administration during the COVID-19 pandemic: clinical services and patient characteristics associated with utilization. *J Am Med Inform Assoc* 2021;28:453-62.
31. <https://www.cms.gov/newsroom/fact-sheets/medicare-telemedicine-health-care-provider-fact-sheet>. Accessed 03/26/2021.



## Legends for Figures

**Figure 1.** Algorithm for visit identification.

**Legend:** We used both E/M and VA “stop codes” (clinic location) to identify visits to include in our analysis, as detailed in Supplemental Text 1. 1) E/M codes for visits with decision-making by a qualified healthcare provider; 2) stop codes for primary care, geriatrics, and endocrinology visits; 3) stop codes for visits by nurse practitioner or physician; 4) stop codes specific to virtual visits; 5) E/M codes specific to virtual visits.

**Figure 2.** Visit rates according to time, Charlson Comorbidity Index and A1c level.

**Abbreviations:** A1c, hemoglobin A1c; CCI, Charlson Comorbidity Index.

**Legend:** The dots display the observed rates, and the lines the predicted rates. The dashed line shows the month of March 2020 (pandemic declaration month).

**Figure 3.** A1c measurement rates according to time.

**Abbreviations:** A1c, hemoglobin A1c.

**Legend:** The dashed line shows the month of March 2020 (pandemic declaration month).

**Figure 4.** Proportions with intensification and with deintensification of antidiabetics, according to time.

**Legend:** Deintensification was defined as a decrease in the number or dose of previously prescribed antidiabetics (no refill of an antidiabetic, or refill at lower dose, within 180 days of the first of each month). Intensification was defined as a fill for a new antidiabetic, or refill at higher dose. Deintensification was compared to no deintensification, for patients being treated with  $\geq 1$  antidiabetic other than metformin. Intensification was compared to no intensification for all patients. The dots display the observed rates, and the lines the predicted rates. The dashed line shows the month of June 2020 (proxy for pandemic declaration month, instead of March 2020, to account for 90-day delay in refills used to calculate treatment modification). The deintensification analysis included only patients eligible for deintensification, defined as receiving at least another medication than metformin.

**Table 1.** Baseline characteristics (N=740,602).

Characteristic	T2D without complication (N=437,826)	T2D with complication (N=302,776)
Age, years	74.3 (6.6)	74.0 (6.5)
Male	429,937 (98.2)	298,557 (98.6)
Systolic blood pressure, mmHg	134.2 (15.8)	134.5 (15.8)
Diastolic blood pressure, mmHg	73.5 (8.9)	72.3 (8.6)
Resting heart rate, beats per min	73.4 (12.1)	73.7 (11.8)
Charlson Comorbidity Index	1.8 (1.3)	3.5 (1.7)
<i>A1c</i> <sup>a</sup>		
- <6.0%	45,235 (13.8)	23,394 (9.7)
- 6.0-6.9%	130,429 (39.8)	73,992 (30.7)
- 7.0-8.4%	109,643 (33.5)	96,077 (39.9)
- ≥8.5%	42,156 (12.9)	47,420 (19.7)
<i>Chronic conditions</i>		
- Chronic kidney disease	48,262 (11.0)	87,872 (29.0)
- Congestive heart failure	35,876 (8.2)	48,699 (16.1)
- Peripheral vascular disease	32,816 (7.5)	47,278 (15.6)
- Cancer with / without metastasis	44,880 (10.3)	34,970 (11.5)
- Cerebrovascular disease	31,216 (7.1)	34,683 (11.5)
- Dementia	15,180 (3.5)	13,965 (4.6)
<i>Antidiabetic medication</i>		
- Metformin	150,039 (34.3)	106,352 (35.1)
- Insulin	68,206 (15.6)	100,555 (33.2)
- Sulfonylurea	77,988 (17.8)	62,530 (20.7)
- DPP-4 inhibitor	15,688 (3.6)	15,028 (5.0)
- GLP-1	2,701 (0.6)	5,176 (1.7)
- SGLT2 inhibitor	2,042 (0.5)	2,907 (1.0)
- Acarbose	2,018 (0.5)	2,124 (0.70)
<i>Visits during the study period</i> <sup>b</sup>		
- Virtual	1.4 (1.9)	1.6 (2.4)
- In person	3.7 (2.6)	4.5 (3.4)
<i>Region</i>		
- North Central	104,168 (23.8)	75,696 (25.0)
- North East	61,074 (14.0)	41,108 (13.6)
- South	194,419 (44.4)	135,271 (44.7)
- West	78,165 (17.9)	50,701 (16.8)

**Abbreviations:** A1c, hemoglobin A1c; DPP, dipeptidyl peptidase; GLP, glucagon-like peptide; SGLT, sodium-glucose linked transporter.

**Legend:** Data are N (%) or mean (standard deviation)

<sup>a</sup> 568,346 (77%) had an A1c measurement within 6 months of baseline visit.

<sup>b</sup> July 2018 to November 2020.

**Table 2.** Incidence rate ratio and relative risk ratio according to pandemic time and Charlson Comorbidity Index, for visits, A1c measurement, deintensification, and intensification.

	<b>Incidence rate ratio (95%CI), relative to baseline period</b>	<b>Relative risk ratio (95%CI) for CCI &gt;2 vs. ≤2</b>	<b>Difference in difference in absolute rates for CCI &gt;2 vs. ≤2</b>
<b>FOLLOW-UP</b>			
<b>In-person visit rate</b>			
- March 2020	0.61 (0.59 to 0.62)	0.95 (0.93 to 0.98)	-16.7 (-19.5 to -13.0)
- April-November 2020	0.45 (0.42 to 0.48)	0.98 (0.94 to 1.02)	-21.1 (-24.2 to -18.0)
<b>Virtual visit rate</b>			
- March 2020	4.50 (4.29 to 4.72)	0.89 (0.85 to 0.92)	8.1 (4.9 to 11.3)
- April-November 2020	8.24 (7.93 to 8.56)	0.86 (0.84 to 0.88)	17.7 (14.5 to 20.9)
<b>Total visit rate</b>			
- March 2020	0.93 (0.91 to 0.95)	0.97 (0.95 to 0.99)	-7.8 (-11.8 to -3.7)
- April-November 2020	1.10 (1.07 to 1.13)	0.96 (0.95 to 0.98)	-3.5 (-7.2 to 3.1)
<b>LABORATORY</b>			
<b>A1c measurement</b>			
- March 2020	0.69 (0.66 to 0.72)	No interaction between time and CCI	No interaction between time and CCI
- April-November 2020	0.94 (0.89 to 0.99)		
<b>MEDICATION</b>			
<b>Deintensification rate</b>			
- March 2020	0.91 (0.89 to 0.93)	1.00 (0.98 to 1.02)	-2.6 (-6.0 to 0.9)
- April-September 2020	1.03 (1.01 to 1.05)	0.98 (0.97 to 1.00)	-2.2 (-4.8 to 0.4)
<b>Intensification rate</b>			
- March 2020	1.09 (1.05 to 1.12)	0.97 (0.95 to 0.99)	-1.8 (-4.2 to 0.5)
- April-September 2020	1.14 (1.10 to 1.17)	0.97 (0.96 to 0.99)	-1.8 (-3.7 to 0.09)

**Abbreviations:** A1c, hemoglobin A1c; CCI, Charlson Comorbidity Index; CI, confidence interval.

**Legend:** The reference period (baseline, or pre-pandemic period) was defined as July 2018 to February 2020 for visit and A1c measurement rates, and July 2018 to May 2020 for deintensification and intensification rates (to account for the 90-day usual refill period used to calculate treatment modification). Medication data were available until September only. All models were adjusted for CCI, time-varying A1c category, and time periods. To account for seasonality in the distribution among A1c measurements and treatment modification, we included in addition variables representing a basis expansion of the calendar month. A relative risk ratio >1.00 means that the incidence rate ratio was higher for patients with CCI >2, while a relative risk ratio <1.00 means that the incidence rate ratio was higher for patients with CCI ≤ 2 point(s). Difference-in-differences (DID) estimates < 0.0 indicate a larger absolute change in the visit rate for patients with CCI ≤2, while a positive DID (> 0.0) indicates a larger absolute change for patients with CCI ≥ 2.

Figure 1.

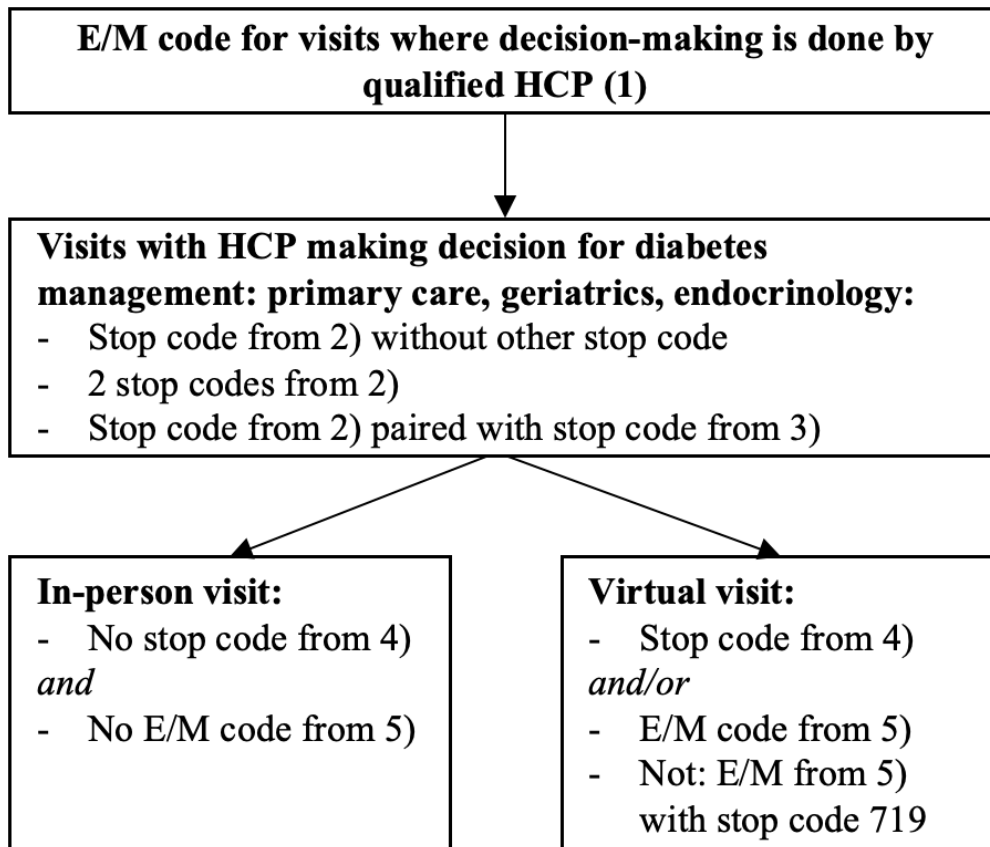


Figure 2.



Figure 3.

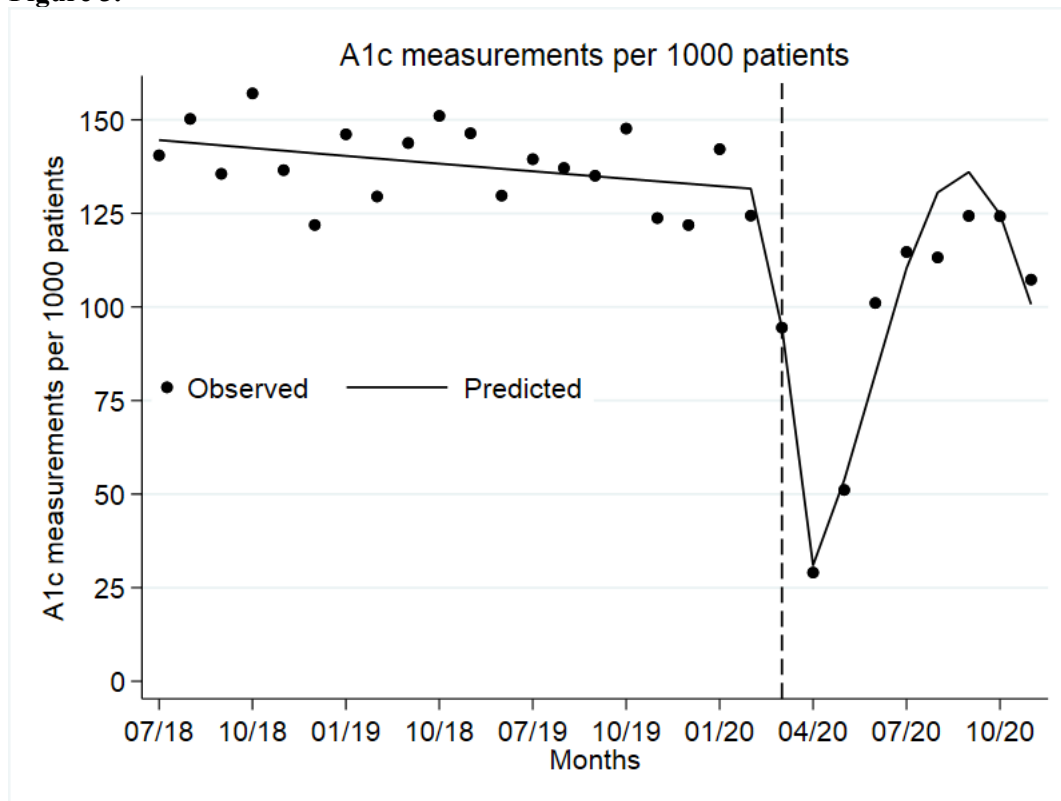
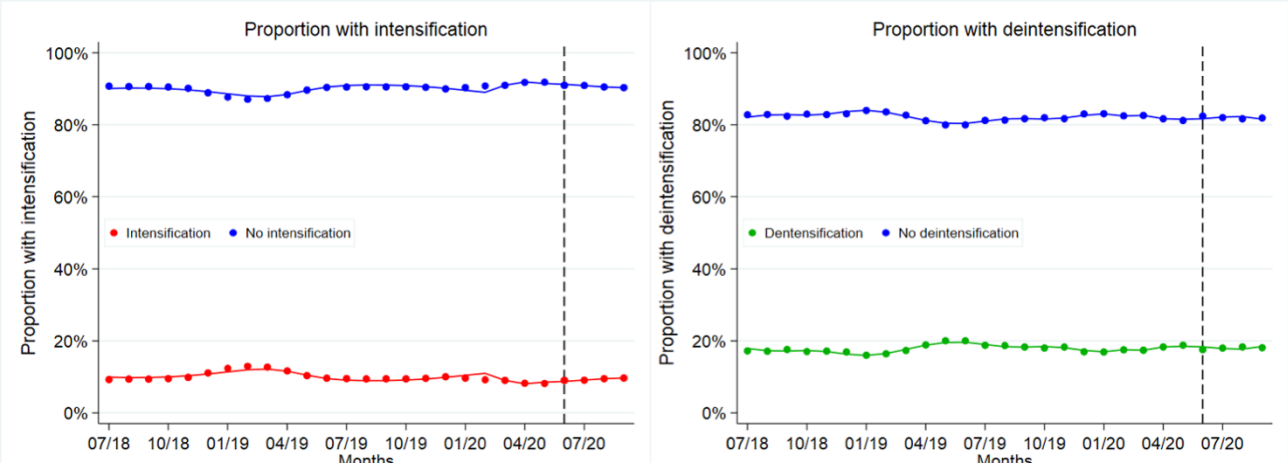


Figure 4.



## **ONLINE SUPPLEMENTAL MATERIAL**

### **Type 2 diabetes management, control and outcomes during the COVID-19 pandemic**

Carole E. Aubert, MD, James B. Henderson, PhD, Rob Holleman, MPH, Mandi L. Klamerus, MPH, Timothy Hofer, MD, MSc, Eve A. Kerr, MD, MPH



**Supplemental Text 1.** VA stop codes and Evaluation and Management (E/M) codes to define visits.

The following steps and final algorithm were based on a previous VA publication that classified VA stop codes,<sup>30</sup> and on CMS information,<sup>31</sup> following guidelines for E/M billing. Combinations of VA stop codes and E/M codes were examined, to avoid missing visits that would fulfill our inclusion criteria. The codes were combined and limited to the combinations described below to increase specificity of the visit selection.

**1) First, we identified E/M codes for visits with decision-making by a qualified healthcare provider:**

- 99201-99205
- 99211-99215
- 99421-99423
- 99441-99443

**2) Second, we identified stop codes for primary care, geriatrics, and endocrinology visits:**

- 170 Hbpc – Physician
- 172 Hbpc - Physician Extender (Np, Cns, Pa)
- 301 General Internal Medicine
- 305 Endocrinology
- 318 Geriatric Problem-Focused Consultation Clinic
- 322 Comprehensive Women's Primary Care Clinic
- 323 Primary Care Medicine
- 326 Telephone/Geriatrics
- 338 Telephone Primary Care
- 348 Primary Care Shared Appointment
- 350 Geripact

**3) Third, we identified stop codes that specify which qualified healthcare provider was involved (if none specified, we assumed that it was a certified physician, since other healthcare providers were coded specifically):**

- 185 Nurse practitioner
- 186 Physician assistant
- 188 Fellow/resident

**4) Fourth, we identified stop codes specific to virtual visits:**

- 103 Telephone Triage
- 147 Telephone/Ancillary
- 178 Telephone Hbpc
- 179 Real Time Clinical Video Telehealth To Home - Provider Site
- 324 Telephone/Medicine
- 326 Telephone/Geriatrics
- 338 Telephone Primary Care
- 648 Real Time Clinical Video Telehealth With Non-VAMC Location - Provider Site,
- 679 National Center Real Time Clinical Video Telehealth To Home- Provider Site
- 690 Real Time Clinical Video Telehealth- Patient Site
- 692 Real Time Clinical Video Telehealth- Provider Site (Same Division/Station)
- 693 Real Time Clinical Video Telehealth - Provider Site (Not Same Station)
- 699 Real Time Clinical Video Telehealth- Emergency Consultation (Provider Enters Workload At Patient Site)
- 719 MHV Secure Messaging: DROP (non-decision making)

**5) Fifth, we identified E/M codes specific to virtual visits (this step was used in addition, because a few visits were coded with 2 stop codes that did not mention virtual visits, but these E/M codes are specific to virtual visits):**

- E-portal: 99421-99423
- Telephone: 99441-99443

**6) Sixth, we excluded E/M codes specific to virtual visits that were paired to VA stop code “719 MHV Secure Messaging”, since this stop code does not usually involve decision-making.**

**7) Finally, using the codes in step 1 to 5, we used the following algorithm to identified visits to be included in the analysis, and classify them as in-person or virtual visits:**

**Supplemental Table 1.** Relative risk ratios according to pandemic time and baseline A1c level, for visits, deintensification, and intensification.

	<b>Relative risk ratio (95% CI) (reference: A1c 7.0-8.4%)</b>			
	<b>No A1c</b>	<b>A1c &lt;6.0%</b>	<b>A1c 6.0-6.9%</b>	<b>A1c ≥8.5%</b>
<b>FOLLOW-UP</b>				
<b>In-person visit rate</b>				
- March 2020	0.82 (0.79 to 0.85)	1.00 (0.97 to 1.02)	1.02 (0.99 to 1.04)	1.02 (0.99 to 1.05)
- April-November 2020	0.79 (0.74 to 0.85)	1.05 (0.98 to 1.12)	1.02 (0.96 to 1.08)	0.98 (0.92 to 1.04)
<b>Virtual visit rate</b>				
- March 2020	1.12 (1.04 to 1.21)	0.97 (0.92 to 1.03)	1.02 (0.98 to 1.07)	0.91 (0.88 to 0.96)
- April-November 2020	1.23 (1.18 to 1.27)	0.99 (0.96 to 1.03)	1.04 (1.00 to 1.07)	0.90 (0.87 to 0.93)
<b>Total visit rate</b>				
- March 2020	0.82 (0.79 to 0.85)	1.01 (0.97 to 1.03)	1.01 (0.98 to 1.03)	1.01 (0.99 to 1.04)
- April-November 2020	0.84 (0.82 to 0.87)	1.03 (1.00 to 1.05)	1.01 (0.98 to 1.03)	0.99 (0.97 to 1.02)
<b>MEDICATION</b>				
<b>Deintensification rate</b>				
- March 2020	1.05 (1.02 to 1.08)	0.96 (0.93 to 0.99)	0.97 (0.95 to 1.00)	1.02 (1.00 to 1.05)
- April-September 2020	1.06 (1.04 to 1.08)	1.00 (0.97 to 1.03)	1.00 (0.98 to 1.03)	1.01 (0.99 to 1.03)
<b>Intensification rate</b>				
- March 2020	0.91 (0.88 to 0.93)	1.13 (1.07 to 1.20)	1.05 (1.02 to 1.09)	0.97 (0.94 to 1.00)
- April-September 2020	0.97 (0.94 to 0.99)	1.07 (1.03 to 1.10)	1.06 (1.03 to 1.10)	1.02 (1.00 to 1.05)

**Abbreviations:** A1c, hemoglobin A1c; CI, confidence interval.

**Legend:** The reference period (baseline, or pre-pandemic period) was defined as July 2018 to February 2020. Medication data were available until September only. A1c was assessed as a time-varying variable, and included, for each month, the most recent A1c measurement within 6 months prior the first of that month. All models were adjusted for CCI, time-varying A1c category, and time periods. To account for seasonality in the distribution among A1c measurements and treatment modification, we included in addition variables representing a basis expansion of the calendar month. A relative risk ratio >1.00 means that the incidence rate ratio was lower for patients with A1c 7.0-8.4%, while a relative risk ratio <1.00 means that the incidence rate ratio was higher for those patients. For example, for virtual visits, the relative risk ratio >1.00 in March 2020 for “no A1c” means that patients with no A1c measurement had a larger increase in virtual visits than those with A1c between 7.0-8.4%, in March 2020 compared to the pre-pandemic period. On the other hand, the relative risk ratio <1.00 in March 2020 for those with A1c<6.0% means that patients with A1c <6.0% had a smaller increase in virtual visits than those with A1c between 7.0-8.4%, in March 2020 compared to the pre-pandemic period.

**Supplemental Table 2.** Difference in absolute difference in rates according to pandemic time and A1c level, for visits, A1c measurement, deintensification, and intensification.

	<b>Difference in absolute difference in rates (number per 1000 patients) (95% CI) (reference: A1c 7.0-8.4%)</b>			
	<b>No A1c</b>	<b>A1c &lt;6.0%</b>	<b>A1c 6.0-6.9%</b>	<b>A1c ≥8.5%</b>
<b>FOLLOW-UP</b>				
<b>In-person visit rate</b>				
- March 2020	-5.7 (-9.9 to -1.5)	6.9 (3.2 to 10.6)	8.7 (5.2 to 12.2)	-9.4 (-13.7 to -5.2)
- April-November 2020	7.6 (3.0 to 12.1)	15.0 (10.1 to 19.8)	13.2 (8.5 to 17.8)	-21.3 (-26.4 to -16.2)
<b>Virtual visit rate</b>				
- March 2020	-23.8 (-28.7 to -18.9)	-6.3 (-10.8 to -1.8)	-6.8 (-10.6 to -3.1)	11.0 (6.6 to 15.4)
- April-November 2020	-44.4 (-49.1 to -39.8)	-10.8 (-15.7 to -5.9)	-14.3 (-19.4 to -9.2)	25.1 (19.6 to 30.6)
<b>Total visit rate</b>				
- March 2020	-29.4 (-36.2 to -22.7)	0.8 (-4.7 to 6.3)	1.8 (-3.2 to 6.8)	1.4 (-4.3 to 7.2)
- April-November 2020	-36.0 (-41.8 to -30.1)	3.3 (-2.3 to 9.04)	-1.5 (-7.0 to 4.0)	3.2 (-2.7 to 9.1)
<b>MEDICATION</b>				
<b>Deintensification rate</b>				
- March 2020	7.8 (3.3 to 12.2)	-15.6 (-22.0 to -9.2)	-5.0 (-8.9 to -1.2)	0.8 (-3.6 to 5.2)
- April-September 2020	9.7 (6.6 to 12.8)	1.7 (-4.6 to 7.9)	1.2 (-2.4 to 4.8)	3.6 (-0.4 to 7.5)
<b>Intensification rate</b>				
- March 2020	-9.7 (-13.4 to -6.0)	-0.2 (-4.2 to 3.8)	0.0 (-3.9 to 4.0)	-2.9 (-8.1 to 2.2)
- April-September 2020	-12.2 (-15.6 to -8.7)	-12.4 (-15.9 to 8.8)	-6.6 (-10.1 to -3.2)	15.9 (11.3 to 20.5)

**Abbreviations:** A1c, hemoglobin A1c; CI, confidence interval.

**Legend:** The reference period (baseline, or pre-pandemic period) was defined as July 2018 to February 2020. Medication data were available until September only. A1c was assessed as a time-varying variable, and included, for each month, the most recent A1c measurement within 6 months prior the first of that month. All models were adjusted for CCI, time-varying A1c category, and time periods. To account for seasonality in the distribution among A1c measurements and treatment modification, we included in addition variables representing a basis expansion of the calendar month. An absolute difference in rates <0.0 means that the absolute rates were lower for patients with A1c 7.0-8.4%, while an absolute difference >0.0 means that the absolute rates were higher for those patients. For example, for virtual visits, the difference <0.0 in March 2020 for “no A1c” means that the absolute number of virtual visits was larger in patients with A1c between 7.0-8.4% than in those with no A1c, in March 2020 compared to the pre-pandemic period. On the other hand, the difference >0.0 in March 2020 for “A1c ≥8.5%” means that the absolute number of virtual visits was smaller in patients with A1c between 7.0-8.4% than in those with no A1c, in March 2020 compared to the pre-pandemic period.

**Supplemental Table 3.** Incidence rate ratio and relative risk ratio, according to pandemic time, for emergency room visits and hospitalizations.

Outcome type	Incidence rate ratio (95% CI)	Relative risk ratio (95%CI) for hypoglycemia- related outcome <sup>a</sup>	Relative risk ratio (95%CI) for hyperglycemia- related outcome <sup>a</sup>
<b>ER visits</b>			
- March 2020	0.55 (0.44 to 0.70)	1.01 (0.54 to 1.89)	1.02 (0.66 to 1.58)
- April-November 2020	1.08 (0.78 to 1.50)	0.86 (0.68 to 1.09)	0.95 (0.80 to 1.11)
<b>Hospitalizations</b>			
- March 2020	0.87 (0.79 to 0.96)	0.92 (0.68 to 1.26)	0.63 (0.55 to 0.73)
- April-November 2020	0.99 (0.95 to 1.02)	0.69 (0.59 to 0.81)	0.82 (0.77 to 0.88)
<b>ER visits and hospitalizations <sup>b</sup></b>			
- March 2020	0.87 (0.80 to 0.95)	0.95 (0.69 to 1.31)	0.87 (0.78 to 0.98)
- April-November 2020	0.99 (0.95 to 1.03)	0.75 (0.66 to 0.86)	0.87 (0.82 to 0.93)

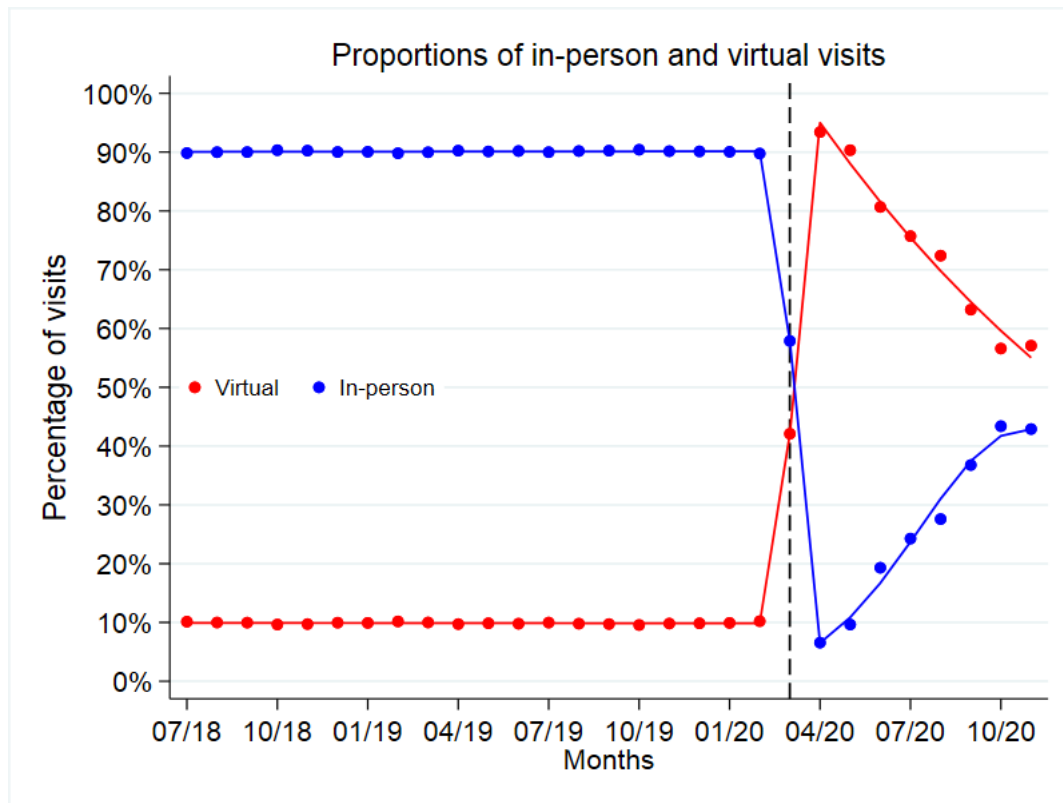
**Abbreviations:** CI, confidence interval; ER, emergency room; ICD, International Classification of Diseases; VHA, Veterans Health Administration.

**Legend:** The reference period is July 2018 to February 2020, representing the baseline pre-pandemic period. A relative risk ratio >1.00 means that the incidence rate ratio was higher for hypoglycemia- or hyperglycemia-related outcome, compared to outcome related to a diagnosis other than hypoglycemia or hyperglycemia. A relative risk ratio <1.00 means the opposite. The analysis included only VHA care, since Medicare data were not yet available.

<sup>a</sup> Compared to outcome related to a diagnosis other than hypoglycemia or hyperglycemia. An was considered as T2D-related if the first diagnosis was one of the following ICD-10 codes: E11.64, E11.641, E11.649 (for hypoglycemia); E11.65, E11.0, D11.00, E11.01, E11.1, E11.10, E11.11 (for hyperglycemia).

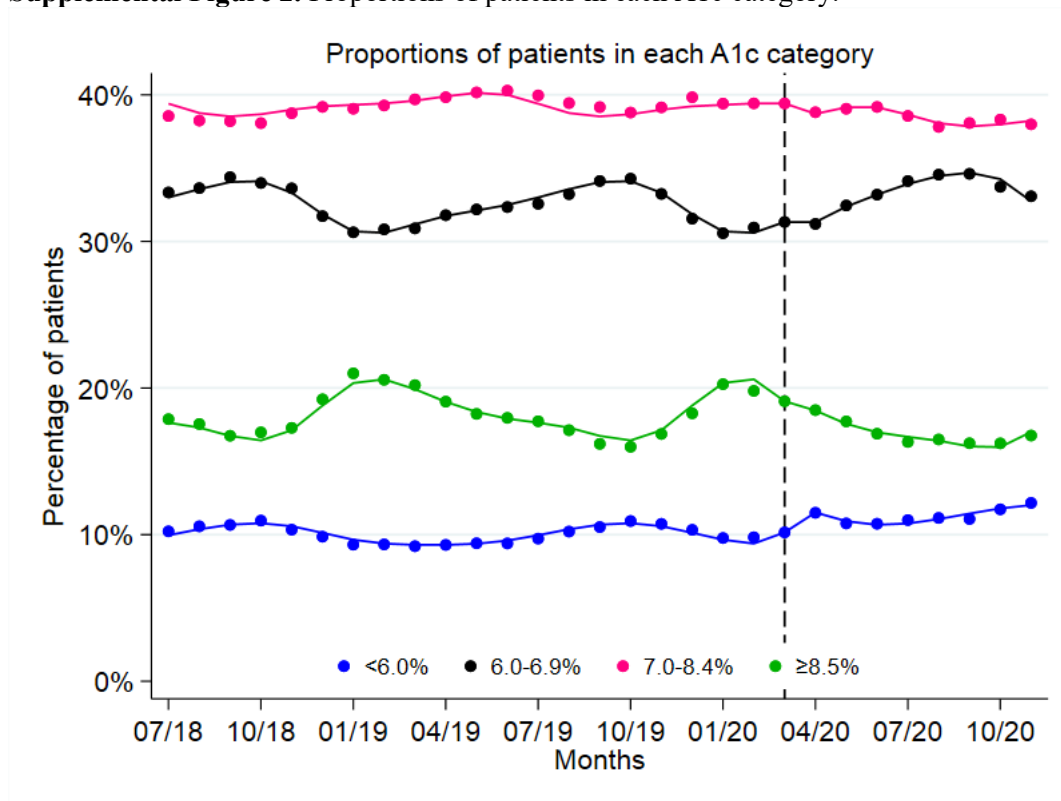
<sup>b</sup> ER visits happening within one day form hospitalizations were dropped to avoid double counting events.

**Supplemental Figure 1.** Proportions of in-person and virtual visits.



**Legend:** The dots display the observed rates, and the lines the predicted rates. The dashed line shows the month of March 2020 (pandemic declaration month).

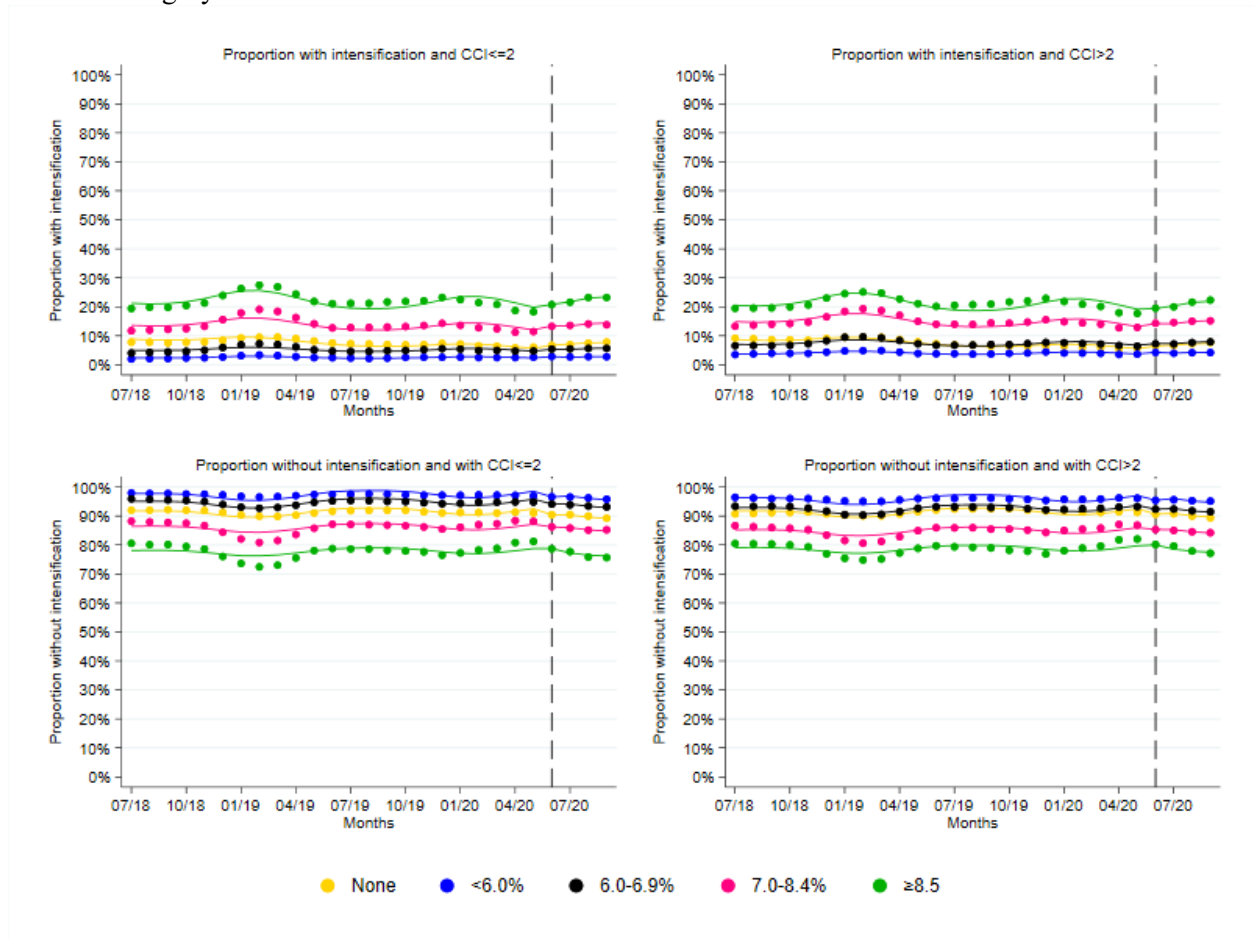
**Supplemental Figure 2.** Proportions of patients in each A1c category.



**Abbreviations:** A1c, hemoglobin A1c.

**Legend:** : The dots display the observed rates, and the lines the predicted rates. The dashed line shows the month of March 2020 (pandemic declaration month).

**Supplemental Figure 3.** Proportions with intensification, according to time, Charlson Comorbidity Index and A1c category.

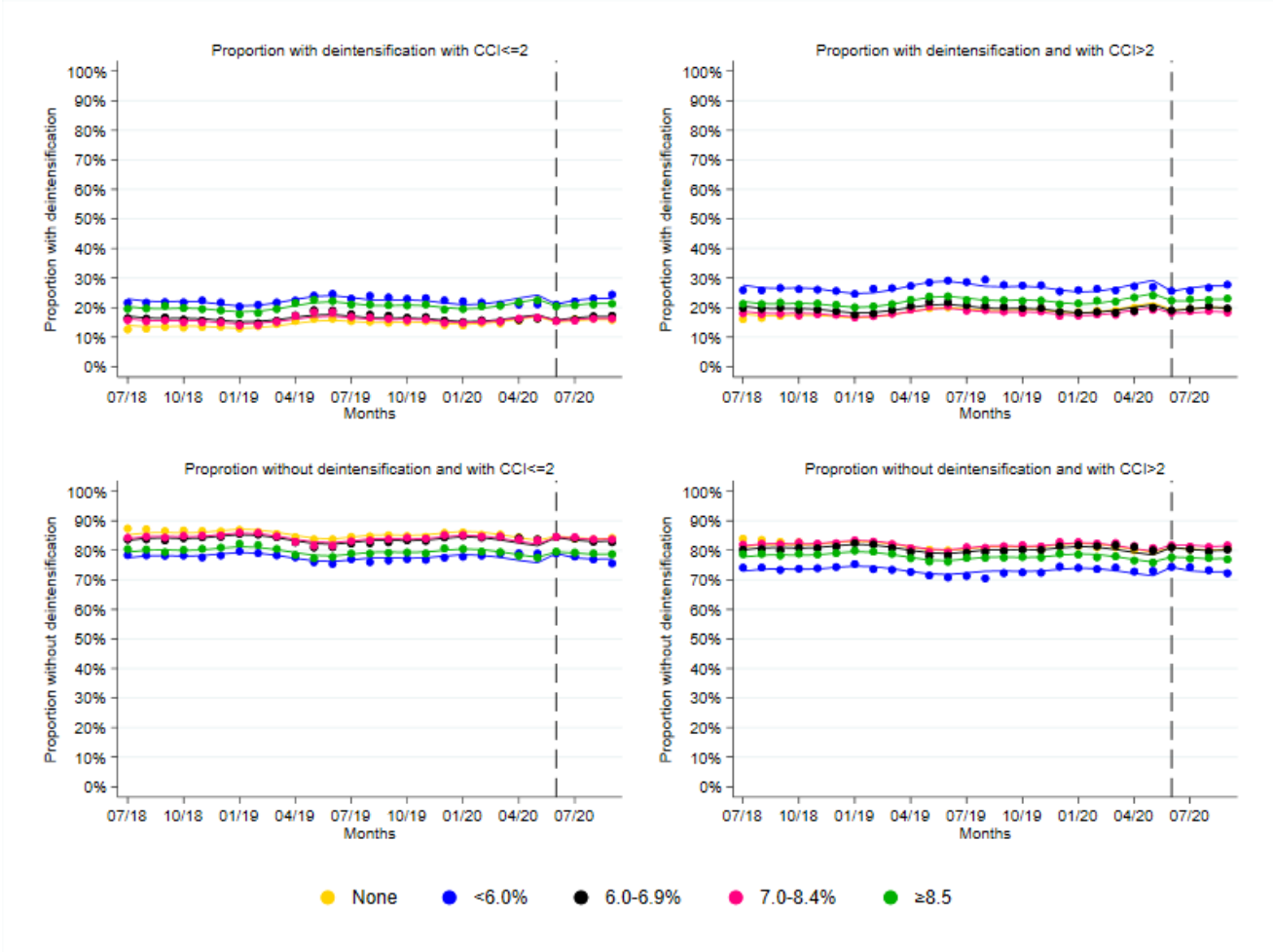


**Abbreviations:** A1c, hemoglobin A1c.

Legend: Intensification was defined as a fill for a new antidiabetic, or refill at higher dose. The dots display the observed rates, and the lines the predicted rates. The dashed line shows the month of June 2020 (pandemic declaration month, instead of March 2020, to account for 90-day delay in refills used to calculate treatment modification). Medication data were available only until September 2020.



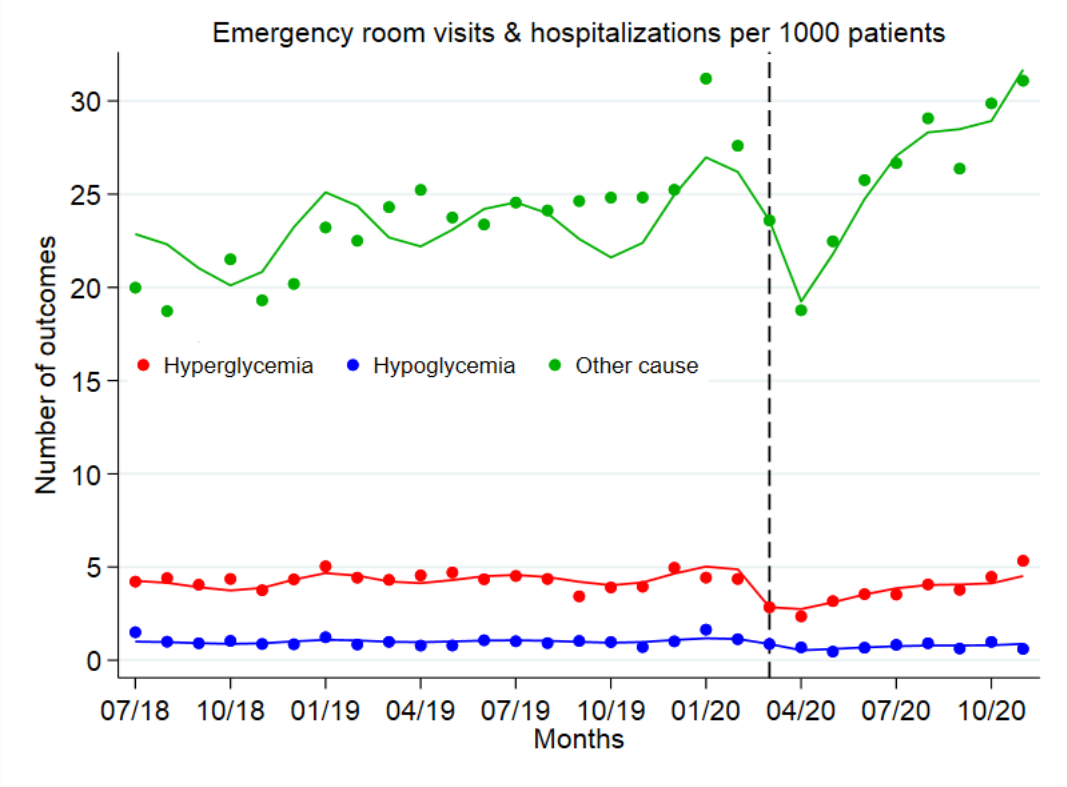
**Supplemental Figure 4.** Proportions with deintensification, according to time, Charlson Comorbidity Index and A1c category.



**Abbreviations:** A1c, hemoglobin A1c.

**Legend:** Deintensification was defined as a decrease in the number or dose of previously prescribed antidiabetics (no refill of an antidiabetic, or refill at lower dose, within 180 days of the first of each month). Deintensification was compared to no deintensification, for patients being treated with  $\geq 1$  antidiabetic other than metformin. Intensification was compared to no intensification for all patients. The dots display the observed rates, and the lines the predicted rates. The dashed line shows the month of June 2020 (pandemic declaration month, instead of March 2020, to account for 90-day delay in refills used to calculate treatment modification). Medication data were available only until September 2020. Only patients eligible for deintensification were included in the analysis, defined as receiving at least another medication than metformin.

**Supplemental Figure 5.** Emergency room visit and hospitalization rates and causes, according to time.



**Legend:** The dots display the observed rates, and the lines the predicted rates. The dashed line shows the month of March 2020 (pandemic declaration month). Emergency room visits within one day of hospitalizations were not counted separately to avoid double counting events.