

## ORIGINAL RESEARCH

# Humoral and cellular immune responses on SARS-CoV-2 vaccines in patients with anti-CD20 therapies: a systematic review and meta-analysis of 1342 patients

Simeon Schietzel,<sup>1</sup> Manuel Anderegg,<sup>1,2</sup> Andreas Limacher ,<sup>3</sup> Alexander Born,<sup>1</sup> Michael P Horn ,<sup>4</sup> Britta Maurer ,<sup>5</sup> Cedric Hirzel ,<sup>6</sup> Daniel Sidler ,<sup>1</sup> Matthias B Moor <sup>1</sup>

**To cite:** Schietzel S, Anderegg M, Limacher A, *et al*. Humoral and cellular immune responses on SARS-CoV-2 vaccines in patients with anti-CD20 therapies: a systematic review and meta-analysis of 1342 patients. *RMD Open* 2022;**8**:e002036. doi:10.1136/rmdopen-2021-002036

► Additional supplemental material is published online only. To view, please visit the journal online (<http://dx.doi.org/10.1136/rmdopen-2021-002036>).

SS and MA are joint first authors.

Received 16 October 2021  
Accepted 3 January 2022



© Author(s) (or their employer(s)) 2022. Re-use permitted under CC BY-NC. No commercial re-use. See rights and permissions. Published by BMJ.

For numbered affiliations see end of article.

## Correspondence to

Dr Matthias B Moor;  
[matthias.moor@dbmr.unibe.ch](mailto:matthias.moor@dbmr.unibe.ch)

## ABSTRACT

**Background** Immune responses on SARS-CoV-2 vaccination in patients receiving anti-CD20 therapies are impaired but vary considerably. We conducted a systematic review and meta-analysis of the literature on SARS-CoV-2 vaccine induced humoral and cell-mediated immune response in patients previously treated with anti-CD20 antibodies.

**Methods** We searched PubMed, Embase, Medrxiv and SSRN using variations of search terms ‘anti-CD20’, ‘vaccine’ and ‘COVID’ and included original studies up to 21 August 2021. We excluded studies with missing data on humoral or cell-mediated immune response, unspecified methodology of response testing, unspecified timeframes between vaccination and blood sampling or low number of participants ( $\leq 3$ ). We excluded individual patients with prior COVID-19 or incomplete vaccine courses. Primary endpoints were humoral and cell-mediated immune response rates. Subgroup analyses included time since anti-CD20 therapy, B cell depletion and indication for anti-CD20 therapy. We used random-effects models of proportions.

**Findings** Ninety studies were assessed. Inclusion criteria were met by 23 studies comprising 1342 patients. Overall rate of humoral response was 0.40 (95% CI 0.35 to 0.47). Overall rate of cell-mediated immune responses was 0.71 (95% CI 0.57 to 0.87). A time interval  $>6$  months since last anti-CD20 therapy was associated with higher humoral response rates with 0.63 (95% CI 0.53 to 0.72) versus  $<6$  months 0.2 (95% CI 0.03 to 0.43);  $p=0<01$ . Similarly, patients with circulating B cells more frequently showed humoral responses. Anti-CD20-treated kidney transplant recipients showed lower humoral response rates than patients with haematological malignancies or autoimmune disease.

**Interpretation** Patients on anti-CD20 therapies can develop humoral and cell-mediated immune responses after SARS-CoV-2 vaccination, but subgroups such as kidney transplant recipients or those with very recent therapy and depleted B cell are at high risk for non-seroconversion and should be individually assessed for personalised SARS-CoV-2 vaccination strategies. Potential

## Key messages

### What is already known about this subject?

- Patients receiving anti-CD20 therapy show impaired immune responses to vaccines against different viral and bacterial pathogens.
- Individual reports showed impairment of immune responses induced by SARS-CoV-2 vaccines after a very recent anti-CD20 therapy or in B cell depleted individuals.

### What does this study add?

- We synthesise the evidence for SARS-CoV-2 vaccine immunogenicity in this population over different disease populations and stratify according to different immunoassays, B cell depletion status and timing of anti-CD20 therapy.

### How might this impact on clinical practice or further developments?

- Our data can assist in the individual prediction of immune responses induced by SARS-CoV-2 vaccines for different subgroups of patients receiving B cell depleting therapy and guide strategies to optimise timing of vaccine and/or anti-CD20 therapy administration.

limitations are small patient numbers and heterogeneity of studies included.

**Funding** This study was funded by Bern University Hospital.

## INTRODUCTION

The severe impact of the COVID-19 pandemic has led to the implementation of worldwide vaccination programmes. Even though SARS-CoV-2 vaccines have been made widely available, immunocompromised patients may still

be at significant risk for severe COVID-19 after immunisation. B cell depleting therapy in particular is associated with impaired vaccination responses, as already demonstrated in prepandemic studies.<sup>1-3</sup> In addition, disease entities and patient factors, such as individual and disease-specific B cell repopulation kinetics further influence response rates.<sup>4,5</sup> Also, an adequate time interval between anti-CD20 therapy and vaccination seems crucial as previously demonstrated by immune response rates on influenza vaccines.<sup>4</sup>

With the broad availability of SARS-CoV-2 vaccines in many countries, strategies aimed at understanding and improving the immunogenicity of vaccines are urgently needed for patients undergoing anti-CD20 therapy. We therefore performed a systematic review and meta-analysis of humoral and cell-mediated immune responses after administration of SARS-CoV-2 vaccines in patients treated with anti-CD20 antibodies focusing on quantitative measures, diseases entities and duration since last anti-CD20 therapy.

## METHODS

We performed a systematic review and meta-analysis of peer-reviewed studies and preprints available online and reported it according to the Preferred Reporting Items for Systematic Reviews and Meta-Analyses.<sup>5</sup>

## Definitions

We defined anti-CD20 therapy as treatment with rituximab, rituximab-abbs, rituximab-arrx, rituximab-hyaluronidase, rituximab-pvvr, ocrelizumab, obinutuzumab, ofatumumab and ibritumomab tiuxetan. We defined rituximab as monotherapy if explicitly reported. In most of the included studies, however, it was not defined if anti-CD20 treatment was administered as monotherapy or in combination with other immunosuppressives. In these cases, we assumed concomitant immunosuppressive comedication as disease types and enumerated baseline medication highly suggested anti-CD20 therapy being part of an immunosuppressive combination therapy.

We defined SARS-CoV-2 vaccine elicited humoral immune response as detection of antispikes antibodies (anti-RBD or anti-S1 (spike protein) SARS-CoV-2) above the cut-off reported by the manufacturer of the given assay. Vaccine elicited cell-mediated immune response was defined as detection of SARS-CoV-2 specific T cells either measured by, T-EliSpot,<sup>6-9</sup> interferon- $\gamma$  release assays<sup>10,11</sup> or activation-induced marker (AIM) detection<sup>12,13</sup> in flow cytometry-sorted cells. AIM used for the detection of vaccine elicited T cells response were CD4 +CXCR5+PD1+and CD38+HLA-DR+<sup>12</sup> as well as S-specific OX40 +41-BB+CD4+ and CD69+41BB+CD8+.<sup>13</sup>

Autoimmune diseases were defined as a collective of diseases characterised by aberrant immune responses including the presence of antibodies or T

cells reacting with self-antigens that are treated with immunosuppressants.

## Eligibility criteria

We considered all original research studies that investigated serological and/or cell-mediated responses on SARS-CoV-2 vaccination in patients with anti-CD20 therapies potentially eligible for inclusion. Prespecified exclusion criteria were exclusive focus on participants with previous COVID-19 infection or incomplete vaccination schedules, unspecified time frames between vaccination and blood sampling, unspecified methodology for detection of antibody-mediated or cell-mediated immunity (specification of manufactures and detection kits mandatory), number of investigated participants lower or equal than 3, missing numbers of positive versus negative humoral or cell-mediated immune responders. In addition, review and guideline articles as well as all search results not meeting the topic of our research question were excluded.

## Information sources and search strategy

PubMed (up to 21 August 2021), Embase (up to 21 August 2021), as well as preprint servers medrxiv, SSRN and SSRN-Lancet (1 January 2020–21 August 2021) were accessed online and searched within title/abstract without language restrictions.

For PubMed,<sup>14</sup> a search for “rituximab OR anti-cd20 AND covid AND vaccine” within title/abstract was performed. For Embase,<sup>15</sup> a search for “rituximab OR anti-CD20 AND covid AND vaccine” within title/abstract was performed. For medrxiv,<sup>16</sup> a search for “rituximab AND covid AND vaccine” was performed. Additionally, a search for “anti-CD20 AND covid AND vaccine” was performed. A third search using “anti-CD20 AND covid AND vaccine” was performed. For SSRN,<sup>17</sup> a search for “rituximab AND covid AND vaccine” was performed. Another search using terms “anti-cd20 AND covid AND vaccine” was performed. For SSRN Preprints with *The Lancet*,<sup>18</sup> a search for “rituximab AND covid AND vaccine” was performed. Another search for “anti-CD20 AND covid AND vaccine” was performed.

## Selection process

We executed the process of studies selection in accordance with Cochrane recommendations.<sup>19</sup> Two authors (SS and MA) independently assessed all search results of PubMed database, and two authors (SS and MBM) independently assessed all search results of EMBASE database and preprint servers. In cases of divergent selections, a third author (MA or MBM, respectively) was consulted. Fulfilments of inclusion and exclusion criteria were reviewed again by each of the three authors and decision processes were mutually rechecked and discussed thereafter. Discrepancies could be unequivocally resolved in all cases with full agreement by all authors. We did not need to apply the prespecified mode of majority decisions due

to persistent disagreements. We did not apply automation tools.

### Data collection process

Tabular and text data of study population subsets with a history of anti-CD20 therapies were manually copied and independently downloaded by each reviewer. Extraction of graphical figure data was performed by image analysis in selected cases. We did not apply automation tools.

### Data items

Next to the inclusion and exclusion criteria specified previously, we extracted the following information from the searched studies:

### Primary outcome data

Percentage of participants (with anti-CD20 therapies, no history of previous COVID-19 disease and complete SARS-CoV-2 vaccination course) with positive serological and/or cell-mediated immune response after SARS-CoV-2-vaccination.

### Data for subgroup generation

Disease types of study population, type of immunosuppressive therapy (anti-CD20±other immunosuppressive treatment), immune assay types used and primary outcome data separated by time since last anti-CD20 treatment (before vs after 6 months). An exploratory post hoc analysis was made according to B cell depletion ('yes' vs 'no' as defined by the studies).

### Data for quality evaluation

Study design, method of cell-mediated immune (CMI) response measurement, manufactures of detection kits and respective cut-off values for test positivity, title of study, digital object identifier and PubMed identifier for repeated duplication checks. In cases where cut-off values of a manufacturer's kit for antibody or CMI response testing were not specified in the methods section, we retrieved these data from the manufacturer's websites.

### Risk of bias assessment

We manually assessed the risk of bias of included studies using the Newcastle-Ottawa Scale for assessing the quality of non-randomised studies in meta-analyses by Wells *et al.*<sup>20</sup> Three investigators (SS, AB and MBM) independently assigned a number of quality criteria (minimum 0, maximum 9) for each study. A fourth investigator (MA) summarised results according to a prespecified mode of majority decision. Threshold of an optimal follow-up period after the second vaccine was estimated as at least 4 weeks after completed vaccination.<sup>21</sup>

### Effect measures

For both outcomes of humoral and cell-mediated immunity, number and proportion of responders was used in the synthesis and presentation of results.

### Synthesis methods

Synthesis was first obtained by tabulating the studies using Microsoft Excel and comparing against a list of exclusion criteria. No missing data were present in the included studies. We performed a random-effects meta-analysis of proportions using the method of Der Simonian & Laird, with pooled estimates calculated by Freeman-Tukey Double Arcsine Transformation<sup>22</sup> to stabilise the variances. Statistical heterogeneity was quantified using the  $I^2$  measure, taken from the inverse-variance fixed-effect model.<sup>23</sup> For individual studies, the Wilson score 95% CI is displayed. To explore possible causes of heterogeneity between studies, we performed prespecified subgroup analyses specified previously.

Quantitative analyses and graphical displays were done in Stata V.17 using the command `metaprop V.10.1`. Small study effects analysis was conducted in R V.4.0.5 (meta-package 4.19–1). No sensitivity analyses were performed.

### Reporting bias assessment

Small study effects were assessed by a funnel plot and a regression test for funnel-plot asymmetry.<sup>24</sup>

### Certainty assessment

No procedures were performed to assess confidence in the body of evidence.

## RESULTS

### Search results

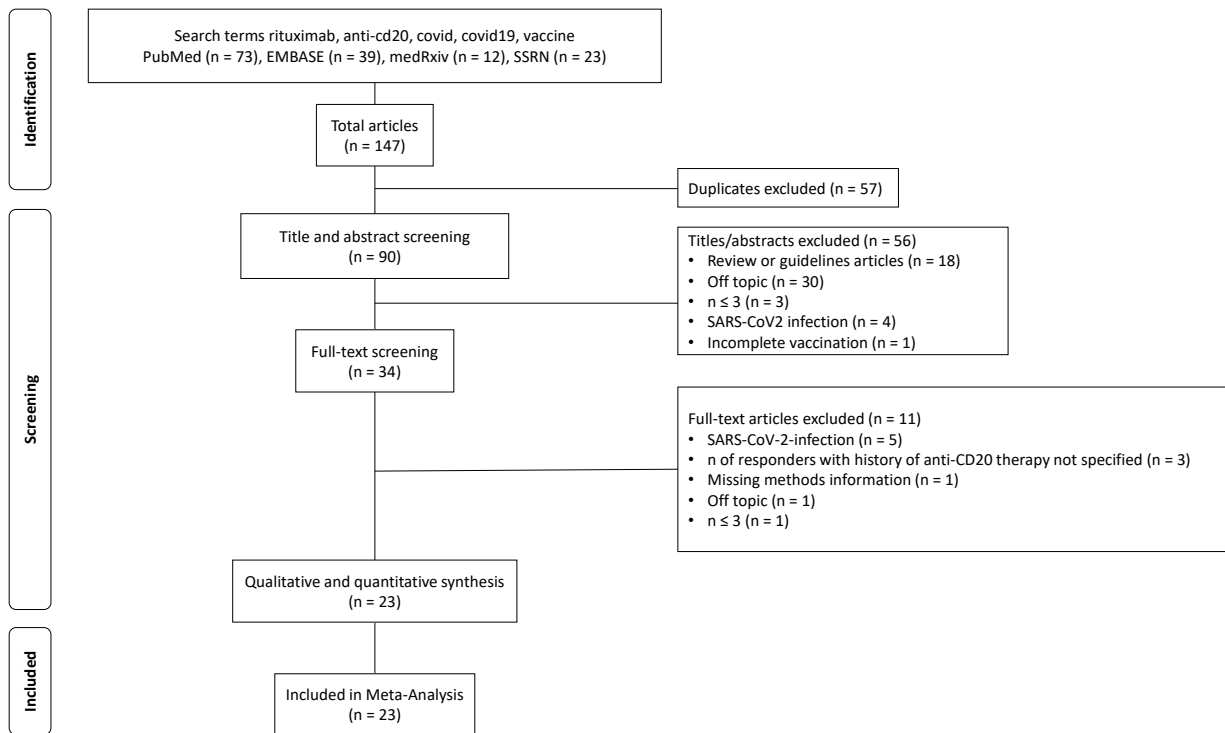
The study selection process is presented in detail in figure 1. Searches in PubMed<sup>14</sup> and Embase (12) yielded 73 and 39 results, respectively. Searches within preprint servers yielded 12 studies from medrxiv<sup>16</sup> and 23 studies from SSRN<sup>17</sup> and SSRN Preprints with *The Lancet*.<sup>18</sup> After removal of 57 duplicates, 90 studies remained for eligibility assessment. Title and abstract screening led to exclusion of 56 additional articles. Full-text screening of the remaining 34 articles then led to further exclusion of 11 articles (online supplemental appendix, pages 4–9). A total of 23 studies with data of 1342 participants fully met inclusion criteria and were eventually included in the meta-analysis.

### Study characteristics

Study characteristics of the included publications<sup>6–13 25–39</sup> are summarised in table 1. Information to assay details of antibody detection and CMI are indicated in online supplemental appendix, pp. 9–10.

### Risk of bias

Online supplemental appendix, p. 11 shows the results of the risk of bias assessment for the individual studies included. Applying the NOS eight out of nine possible quality rating criteria could be met ('Adequacy of follow-up' not applicable). Risk of bias ratings for the 23 included studies were low to moderate.



**Figure 1** Flow chart describing the study search and selection process.

### Results of individual studies

Details regarding the calculations of proportions for meta-analysis using a random-effects model calculation of the effect size are mentioned in the Methods section. Pooled estimates of proportions are shown, with 95% CI. The last column shows the weight of the specific study in percentage.

### Humoral response to vaccination

Humoral responses were highly heterogeneous with a rate of responders ranging from 0 to about 80%, resulting in an overall humoral response rate of 40%. An  $I^2$  of 74% confirmed heterogeneity in this study collection (figure 2). Therefore, studies were subjected to prespecified subgroup analyses including time since last anti-CD20 therapy and anti-CD20 treatment indication.

Stratification based on a 6 months threshold since last anti-CD20 therapy showed that studies with shorter intervals reported significantly lower numbers of responders (20% vs 63%) with exception for one study including exclusively patients with rheumatoid arthritis (figure 3). Benucci *et al*<sup>11</sup> reported a markedly higher humoral response rate of 75% compared with other short-term studies, which probably accounts for the high heterogeneity of this subgroup.

Similarly to the time threshold since last anti-CD20 therapy, we determined in an exploratory analysis whether current status of B cell depletion is associated with worse seroconversion rates. Patients with depleted B cells showed lower numbers of responders (20% vs 77%) (figure 4).

An analysis of humoral response by indication for B cell depletion (autoimmune diseases, haematological malignancy and kidney transplantation) is shown in figure 5. Pooled humoral response rates were similar for autoimmune diseases and cancer (43% vs 36%) but markedly lower for patients having undergone kidney transplantation (14%).

Online supplemental appendix p.2 shows humoral response stratified by types of immunoassay. For some assays, several studies were available. Other assays were used in a single study only or were even used in a combination within other assays within a single study study. Humoral response (pooled response rate) was overall comparable between studies using the Elecsys (Roche) assay, the Quant II (Abbott) assay and the Euroimmun assay. Benucci *et al*<sup>11</sup> was an outlier as it was the only study using a ThermoFisher assay and yielded higher seroconversion rates as mentioned previously.

### Cell-mediated immune response to vaccination

Cell-mediated immune response rates (not stratified, including EliSpot, IGRA and AIM) varied from 44% to 100%, with an overall pooled response rate of 71% (figure 6). The heterogeneity of the included studies is large as indicated by an  $I^2$  of 81.36%.

To address this, we next stratified response rates by assay type (online supplemental appendix p.3). EliSpot showed a mean response rate of 72%, compared with only 47% in IGRA. However, for IGRA, results from only two studies were available, which differed in CMI response

**Table 1** List of included studies

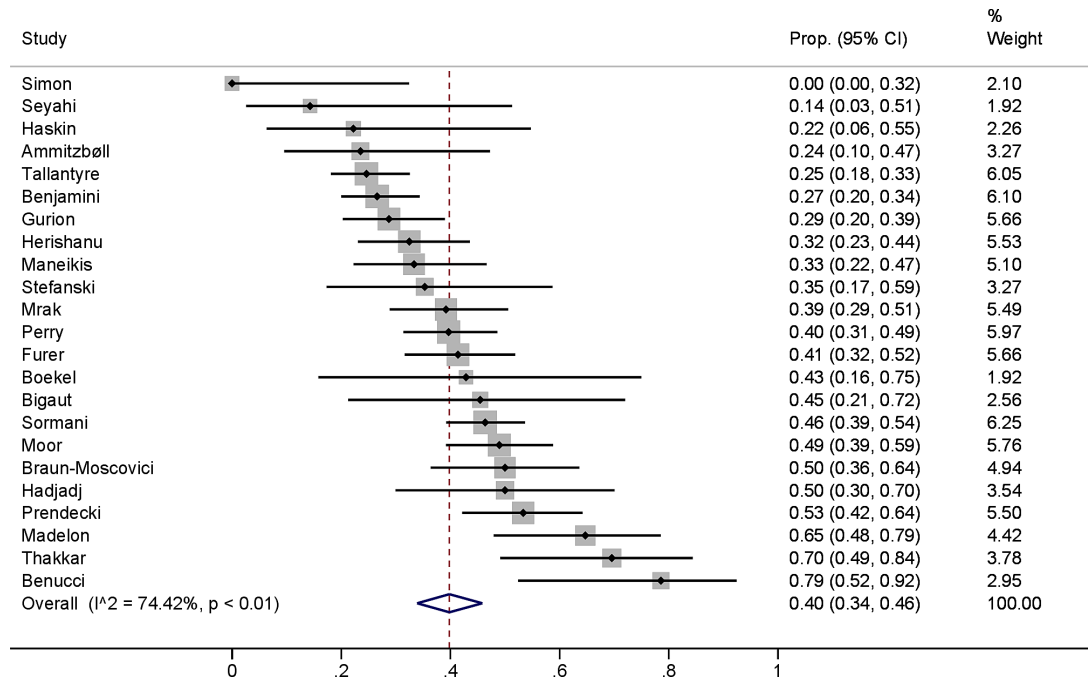
Author (reference)	Time since anti-CD20 therapy	Vaccine	No. of humoral analysis	% responders	Manufacturer antibody assay	No. of CMI analysis	% positive CMI	CMI assay	Population (disease)
Boekel <i>et al</i> <sup>25</sup>		AZ, BP, M, JJ	7	42.9	RBD-ELISA (in-house)	NA	NA	NA	RA, PsA, AxSpA, SLE, SS, MS, other
Perry <i>et al</i> <sup>26</sup>		BP	121	39.7	Elecsys Anti-S assay (Roche)	NA	NA	NA	B-NHL
	≤6 months		55	7.3					
	>6 months		66	66.7					
Haskin <i>et al</i> <sup>27</sup>		BP	9	22.2	SARS-CoV-2 IgG II Quant (Abbott)	NA	NA	NA	kidney transplant recipients
Predecki <i>et al</i> <sup>9</sup>		AZ, BP	75	53.3	SARS-CoV-2 IgG II Quant (Abbott)	41	82.9	T-SPOT Discovery (Oxford Immunotec)	AAV, anti-GBM disease, Podocytopathy, MN, SLE, other
	≤6 months		44	40.9		28	85.7		
	>6 months		31	71.0		13	76.9		
Herishanu <i>et al</i> <sup>28</sup>		BP	77	48.1	Elecsys Anti-S assay (Roche)	NA	NA	NA	CLL
Gurion <i>et al</i> <sup>29</sup>		BP	87	28.7	SARS-CoV-2 IgG II Quant (Abbott)	NA	NA	NA	lymphoma
Benjamini <i>et al</i> <sup>30</sup>		BP	143	26.6	one of three kits, see appendix	NA	NA	NA	CLL
Ammitzbøll <i>et al</i> <sup>31</sup>		BP	17	23.5	VITROS Immunodiagnostic Products	NA	NA	NA	SLE, RA
Bigaut <i>et al</i> <sup>32</sup>		BP, M	11	45.5	Abbott or Roche anti-S	NA	NA	NA	MS
Thakkar <i>et al</i> <sup>33</sup>		BP, M, JJ	23	69.6	Abbott anti-S immunoassay	NA	NA	NA	Lymphoid, Plasma cell, Myeloid
Furer <i>et al</i> <sup>34</sup>		BP	87	41.4	LIAISON (DiaSorin) anti-S quantitative assay	NA	NA	NA	RA, PsA, AxSpA, SLE, IIM, Vasculitis
Seyahi <i>et al</i> <sup>35</sup>		CV	7	14.3	Elecsys Anti-S assay (Roche).	NA	NA	NA	RA, CTD, AxSpA, Vasculitis, FMF, IBD
Benucci <i>et al</i> <sup>11</sup>		BP	14	78.6	S1-RBD IgG FEIA (ThermoFisher, Uppsala Sweden)	4	100.0	IGRA, Euroimmun	RA
	≤6 months		4	75.0		NA	NA	NA	
	>6 months		10	80.0		NA	NA	NA	
Mrak <i>et al</i> <sup>6</sup>		BP, M	74	39.2	Elecsys Anti-S assay (Roche).	45	57.8	ELISpot assay	IgG4, CTD, RA, vasculitis
Simon <i>et al</i> <sup>8</sup>		BP	8	0.0	anti-S1 ELISA (Euroimmun)	8	75.0	T-SPOT.COVID, Oxford Immunotec	GPA, RA, MS, DM, IgG4
Braun-Moscovici <i>et al</i> <sup>36</sup>		BP	48	50.0	SARS-CoV-2 IgG II Quant (Abbott)	NA	NA	NA	

Continued

Table 1 Continued

Author (reference)	Time since anti-CD20 therapy	Vaccine	No. of humoral analysis	% responders	Manufacturer antibody assay	No. of CMI analysis	% positive CMI	CMI assay	Population (disease)
Hadjadj <i>et al</i> <sup>7</sup>		BP	20	50.0	S-Flow assay (spike)	15	73.3	EliSpot in-house	vasculitis, CTD, RA, AxSpA
Madelon <i>et al</i> <sup>13</sup>		mRNA	34	64.7	Elecsys Anti-S assay (Roche).	34	88.2	AIM assay CD4 +cells	RA, CTD, vasculitis, MS
Stefanski <i>et al</i> <sup>12</sup>		mRNA/vector (BP, AZ, unknown)	17	35.3	anti-S1 ELISA (Euroimmun)	17	70.6	AIM assay CD4 +cells	RA, AAV
Tallantyre <i>et al</i> <sup>37</sup>		BP, JJ	134	24.6	Kantaro Bioscience USA	NA	NA	NA	MS
Moor <i>et al</i> <sup>10</sup>		BP, M	96	49.0	anti-S1 ELISA (Euroimmun)	93	44.1	SARS-CoV-2 IGRA, QuantIFERON	AAV, kidney transplantation, lymphoma, RA, SS, SLE, AIHA, MS, IgG4, MN, systemic sclerosis, immune-mediated necrotising myopathy, pemphigus vulgaris, pemphigoid
	≤6 months		26	19.2		16	1		
	>6 months		70	60.0					
Manekis <i>et al</i> <sup>38</sup>		BP	54	33.3	SARS-CoV-2 IgG II Quant (Abbott)	NA	NA	NA	ALL, AML, MM, FL, DLBCL, CLL, MCL, HL, other B-NHL
	≤6 months		10	0.0					
	>6 months		39	46.2					
Sormani <i>et al</i> <sup>39</sup>		BP, M	179	46.4	ECLIA, Roche Diagnostics	NA	NA	NA	MS

AAV, antineutrophil cytoplasmic antibody (ANCA)-associated vasculitis; AB, antibody; AIIRD, autoimmune inflammatory rheumatic diseases; AIM, activation-induced marker; anti-GBM, anti-glomerular basement membrane disease; AxSpA, axial spondyloarthritis; AZ, Astra-Zeneca; BP, BioNTech-Pfizer; CMI, cell-mediated immunity; CTD, connective tissue disease; CV, CoronaVac; FMF, familial Mediterranean fever; IgG4, IgG4 deposition disease; IM, idiopathic inflammatory myositis; JJ, Johnson-Johnson; M, Moderna; MN, membranous nephropathy; PsA, psoriatic arthritis; RA, rheumatoid arthritis; SLE, systemic lupus erythematosus; SS, Sjögren's syndrome.



**Figure 2** Humoral immune responses across all included studies. Prop., proportion.

rates (44 vs 100%) and in patient numbers (93 vs 4). AIM analysis showed a pooled positive response rate of 83%.

### Sensitivity analyses and reporting bias

No sensitivity analyses were conducted. There was no indication of small study effects in the Funnel plot (p value of test for asymmetry: 0.638) (figure 7).

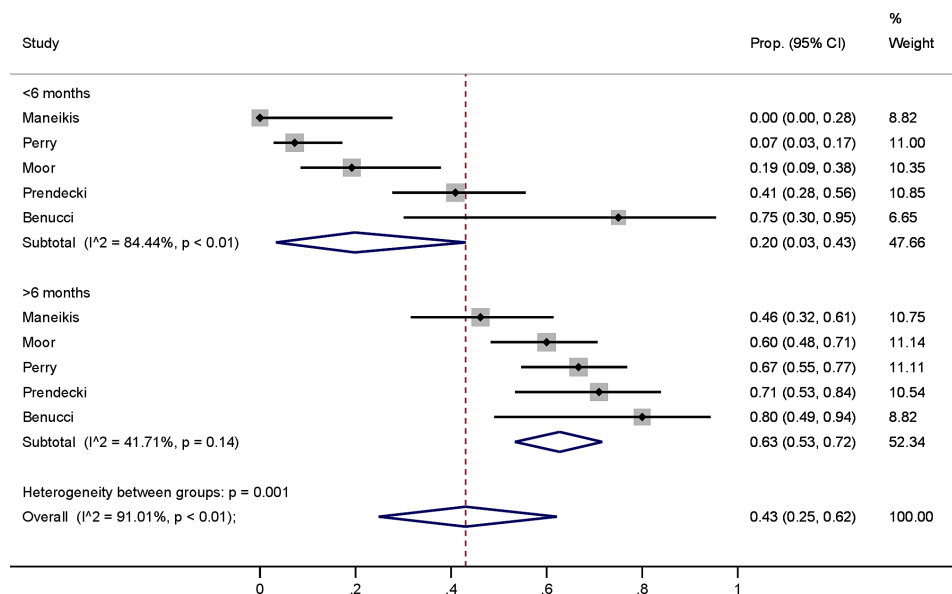
### DISCUSSION

The present work provides an overview of seroconversion rates and cell-mediated immune responses after SARS-CoV-2 vaccines from the first two dozens

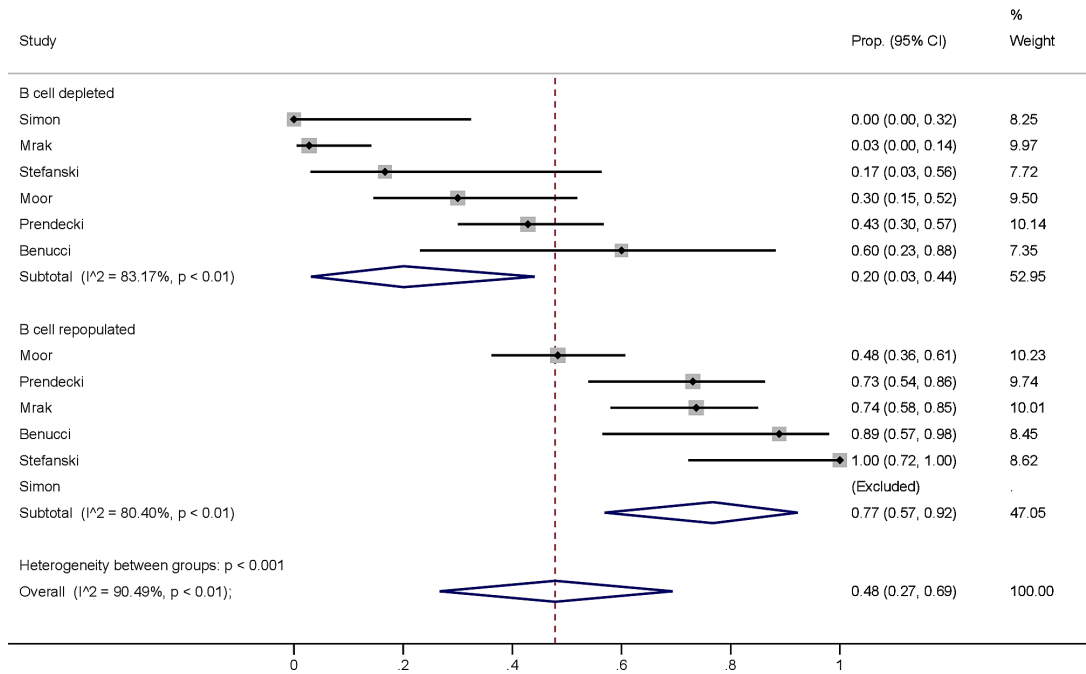
of studies of patients with a history of anti-CD20 therapies. Currently, no systematic reviews are available for this topic.

Our analysis suggests that a remarkable heterogeneity in immunogenicity of SARS-CoV-2 vaccines exists, which partly results from differences in treatment indications, that is, underlying disease settings.

A key result is our finding that current B cell depletion and time since last anti-CD20 therapy administration severely impacts seroconversion rates. This is congruent with the results of individual studies of SARS-CoV-2 vaccines<sup>9 10 26 38</sup> and has been found for influenza



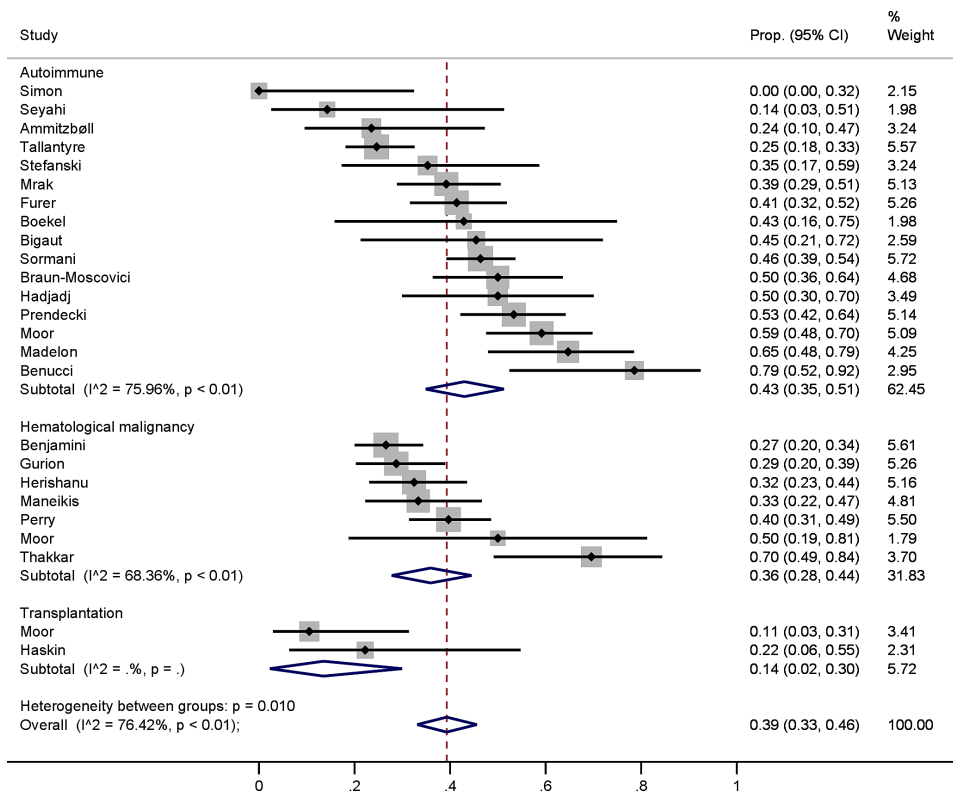
**Figure 3** Humoral immune responses according to prespecified subgroups of <6 or >6 months of time since the last dose of anti-CD20 therapy. Prop., proportion.



**Figure 4** Humoral immune responses stratified by subgroups of patients with depleted versus replete B cell counts. Prop., proportion.

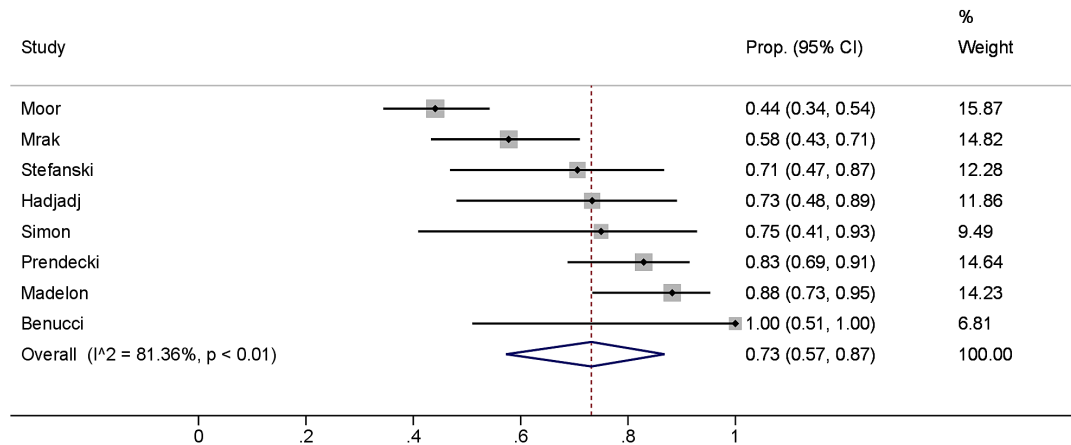
seroconversion in anti-CD20 therapies.<sup>4</sup> This finding may be of particular interest for ideal scheduling of vaccination. However, we have previously reported that some SARS-CoV-2 vaccine-induced seroconversion rates can occur in patients with high CD4-positive T cell counts even at complete B cell depletion due to recent

anti-CD20 therapy.<sup>10</sup> Furthermore, we found that the different assays used in studies of cell-mediated immunity led to heterogeneous results. This highlights a general difference between quantitative IGRA and the more semiquantitative EliSpot analysis, that is, whenever an EliSpot yields a result comparable between patients and



**Figure 5** Humoral immune responses according to prespecified subgroups of indications for anti-CD20 therapy. Prop., proportion.





**Figure 6** Cell-mediated immune responses across all included studies. Prop., proportion.

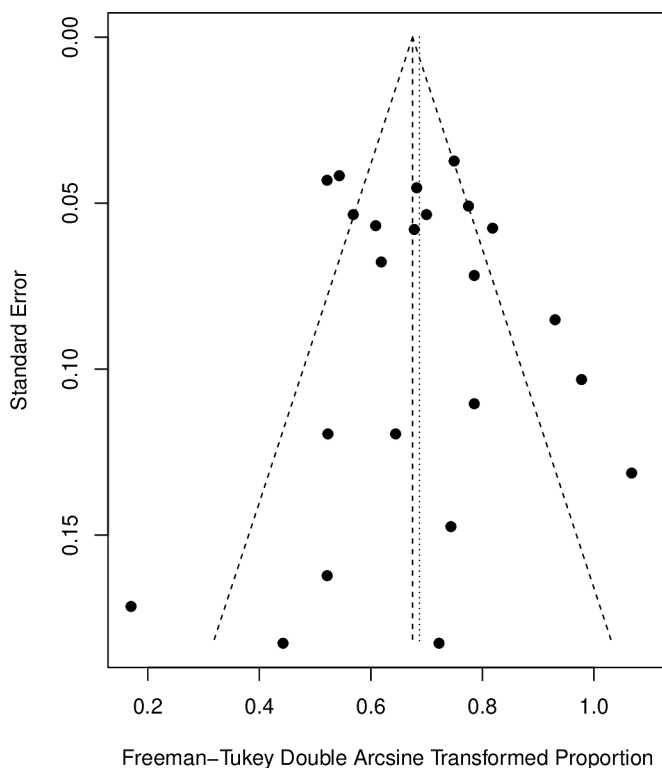
healthy controls, only the fraction of activated cells but not their quantitative activation is captured. Similar to our observation, EliSpot was reported to be more sensitive for diagnosing tuberculosis than quantitative IGRA<sup>40</sup> with an unexplained discordance between the two assay types. Moreover, we report that the type of patient collective heavily influenced the observed immune responses against SARS-CoV-2.

The evidence base included in this review contains some limitations. First, some participants may have been included who had asymptomatic COVID-19, which was not detected by serological testing, for example, by antinucleocapsid immunoassays, and only 8 out of 23 included

studies used an objective assessment of COVID-19 exposure such as prevaccination anti-S or presence of antinucleocapsid antibodies. Second, the seroconversion itself is a somewhat arbitrary outcome, which is heterogeneous due to manufacturer cut-offs, and no clear threshold for protective antibody levels exist to date. Furthermore, the seroconversion may not ultimately translate to protection from severe COVID-19 or symptomatic COVID-19 directly in patients with a history of anti-CD20 therapies. Therefore, the scarce available data on cell-mediated immunity was included in the present analysis, which represents a second although assay-dependent measure of immunity against SARS-CoV-2.

Published information was further insufficient to allow analysis of different anti-CD20 drugs or a better discrimination according to time since last anti-CD20 therapy or last vaccine as a continuous variable that may contribute to heterogeneity of the findings. Finally, for a closer stratification according to individual autoimmune diseases, the current population-level data were insufficient. For such investigations, access to patient-level data is required for analysis in future studies.

The present review process was further limited by an arbitrary timing of the literature search (21 August 2021) of a rapidly emerging knowledge database, which renders the current evidence preliminary rather than definitive and mandates additional meta-analyses in the future. Furthermore, no external experts in the field were consulted, and no unpublished studies or clinical study registry data were queried. Some potential sources of heterogeneity in seroconversion rates in the study population were not captured in subgroup analyses, such as the immunosuppressive comedication<sup>10</sup> and potentially circulating CD4-positive T cell counts in patients on anti-CD20 therapy<sup>10</sup> similar as in HIV studies.<sup>41</sup> Finally, we did not perform an analysis of seroconversion rates according to the different vaccines administered, as population-level data did not sufficiently discriminate between vaccine types. Such



**Figure 7** Funnel plot of all included studies.

analyses and are warranted in further studies of the evidence base.

## SUMMARY AND CLINICAL IMPLICATIONS

The present analysis establishes implications for clinical practice and future research despite the heterogeneity of included studies. Patients with experience of anti-CD20 therapies that are vaccinated against SARS-CoV-2 mount humoral and cell-mediated immune responses to SARS-CoV-2 in 41% and 73% of patients, respectively, after predominantly two-dose regimen of vaccine. Patients with a treatment history of anti-CD20 therapies should be individually assessed for a personalised vaccination strategy against SARS-CoV-2. While the immunogenicity of additional vaccine doses against SARS-CoV-2 remains to be determined, we recommend a close assessment of vaccine-induced seroconversion in patients on anti-CD20 therapy for consideration of additional doses of SARS-CoV-2 vaccine. This is most crucial in those within 6 months since the last dose of anti-CD20 therapy, in those with currently low circulating B cell counts and in transplant recipients treated with multiple immunosuppressive comedication that all showed lower vaccine-driven immunogenicity. Persisting seronegativity after vaccination must be communicated to patients because of the potential eligibility for prophylactic treatments, or for therapeutic antibodies in case of SARS-CoV-2 infection where a mortality reduction was reported in seronegative patients.<sup>42</sup> Furthermore, modulating or delaying immunosuppressive therapies for the sake of vaccine efficacy cannot currently be recommended based on the available data and would have to be carefully weighed against the risk of disease flare-up. Finally, future studies assessing SARS-CoV-2 vaccine efficacy in this population should determine the risk of breakthrough infections.

### Author affiliations

<sup>1</sup>Department of Nephrology and Hypertension, Inselspital University Hospital Bern, Bern, Switzerland

<sup>2</sup>Division of Nephrology, Department of Internal Medicine, Neuchâtel Hospital Network, Neuchâtel, Switzerland

<sup>3</sup>Clinical Trials Unit, University of Bern, Bern, Switzerland

<sup>4</sup>Department of Clinical Chemistry, Inselspital, Bern University Hospital, Bern, Switzerland

<sup>5</sup>Department of Rheumatology and Immunology, Inselspital, Bern University Hospital, Bern, Switzerland

<sup>6</sup>Department of Infectious Diseases, Inselspital, Bern University Hospital, Bern, Switzerland

**Twitter** Manuel Anderegg @Andereggman and Matthias B Moor @NephMoor

**Contributors** MBM and DS conceived the study. SS, MA and MBM screened and selected studies. AL performed statistical analysis. SS, AB, MA and MBM assessed risk of bias. SS, MA, BM, MPH, AB, BM, CH, DS and MBM interpreted the data. SS, MA and MBM wrote the manuscript. MBM is the author responsible for the overall content as the guarantor. All authors critically reviewed and approved the final manuscript.

**Funding** The present study was funded by Bern University Hospital.

**Disclaimer** The funder had no role in the design, execution of the study, analysis of the data nor decision to submit the manuscript for publication.

**Competing interests** None declared.

**Patient consent for publication** Not applicable.

**Ethics approval** This study does not involve human participants but reanalyses published data.

**Provenance and peer review** Not commissioned; externally peer reviewed.

**Data availability statement** All data relevant to the study are included in the article or uploaded as supplementary information. All relevant data are either available in manuscript or in the Supplementary Appendix. Raw data and code can be requested from the corresponding author.

**Open access** This is an open access article distributed in accordance with the Creative Commons Attribution Non Commercial (CC BY-NC 4.0) license, which permits others to distribute, remix, adapt, build upon this work non-commercially, and license their derivative works on different terms, provided the original work is properly cited, appropriate credit is given, any changes made indicated, and the use is non-commercial. See: <http://creativecommons.org/licenses/by-nc/4.0/>.

### ORCID iDs

Andreas Limacher <http://orcid.org/0000-0002-9094-9476>

Michael P Horn <http://orcid.org/0000-0002-5772-6342>

Britta Maurer <http://orcid.org/0000-0001-9385-8097>

Cedric Hirzel <http://orcid.org/0000-0002-7870-912X>

Daniel Sidler <http://orcid.org/0000-0002-2435-5936>

Matthias B Moor <http://orcid.org/0000-0002-7717-651X>

## REFERENCES

- Eisenberg RA, Jawad AF, Boyer J, *et al*. Rituximab-treated patients have a poor response to influenza vaccination. *J Clin Immunol* 2013;33:388–96.
- van der Kolk LE, Baars JW, Prins MH, *et al*. Rituximab treatment results in impaired secondary humoral immune responsiveness. *Blood* 2002;100:2257–9.
- Bingham CO, Looney RJ, Deodhar A, *et al*. Immunization responses in rheumatoid arthritis patients treated with rituximab: results from a controlled clinical trial. *Arthritis Rheum* 2010;62:64–74.
- Vijenthira A, Gong I, Betschel SD, *et al*. Vaccine response following anti-CD20 therapy: a systematic review and meta-analysis of 905 patients. *Blood Adv* 2021;5:2624–43.
- Page MJ, McKenzie JE, Bossuyt PM, *et al*. The PRISMA 2020 statement: an updated guideline for reporting systematic reviews. *BMJ* 2021;372:n71.
- Mrak D, Tobudic S, Koblischke M, *et al*. SARS-CoV-2 vaccination in rituximab-treated patients: B cells promote humoral immune responses in the presence of T-cell-mediated immunity. *Ann Rheum Dis* 2021;80:1345–50.
- Hadjadji J, Planas D, Ouedrani A. Immunogenicity of BNT162b2 vaccine against the alpha and delta variants in immunocompromised patients. *medRxiv* 2021.
- Simon D, Tascilar K, Schmidt K. Humoral and cellular immune responses to SARS-CoV-2 infection and vaccination in B cell depleted autoimmune patients. *Arthritis Rheumatol* 2022.
- Predecki M, Clarke C, Edwards H, *et al*. Humoral and T-cell responses to SARS-CoV-2 vaccination in patients receiving immunosuppression. *Ann Rheum Dis* 2021;80:1322–9.
- Moor MB, Suter-Riniker F, Horn MP, *et al*. Humoral and cellular responses to mRNA vaccines against SARS-CoV-2 in patients with a history of CD20 B-cell-depleting therapy (RituxiVac): an investigator-initiated, single-centre, open-label study. *Lancet Rheumatol* 2021;3:e789–97.
- Benucci M, Damiani A, Infantino M, *et al*. Presence of specific T cell response after SARS-CoV-2 vaccination in rheumatoid arthritis patients receiving rituximab. *Immunol Res* 2021;69:309–11.
- Stefanski AL, Rincon-Arevalo H, Schrezenmeier E, *et al*. B cell numbers predict humoral and cellular response upon SARS-CoV-2 vaccination among patients treated with rituximab. *Arthritis Rheumatol* 2021. doi:10.1002/art.42060. [Epub ahead of print: 28 Dec 2021].
- Madelon N, Lauper K, Breville G. Patients treated with anti-CD20 therapy can mount robust T cell responses to mRNA-based COVID-19 vaccines. *medRxiv* 2021.
- Pubmed. Available: <https://pubmed.ncbi.nlm.nih.gov/> [Accessed 21 Sep 2021].
- Embase. Available: <https://www.embase.com/landing?status=gray> [Accessed 21 Sep 2021].
- medRxiv.org - the preprint server for Health Sciences. Available: <https://www.medrxiv.org/> [Accessed 21 Sep 2021].
- Home : SSRN. Available: <https://www.ssrn.com/index.cfm/en/> [Accessed 21 Sep 2021].

- 18 Preprints with the Lancet: SSRN. Available: <https://www.ssrn.com/index.cfm/en/the-lancet/> [Accessed 21 Sep 2021].
- 19 Higgins J, Thomas J, Chandler J. Cochrane Handbook for systematic reviews of interventions version 6.2 (updated February 2021). Cochrane, 2021. Available: <https://training.cochrane.org/handbook> [Accessed 29 Sep 2021].
- 20 Wells G. The Newcastle-Ottawa scale (NOS) for assessing the quality of nonrandomised studies in meta-analyses. Available: [http://www.ohri.ca/programs/clinical\\_epidemiology/oxford.asp](http://www.ohri.ca/programs/clinical_epidemiology/oxford.asp) [Accessed 21 Sep 2021].
- 21 Wei J, Stoesser N, Matthews PC, *et al.* Antibody responses to SARS-CoV-2 vaccines in 45,965 adults from the general population of the United Kingdom. *Nat Microbiol* 2021;6:1140–9.
- 22 Freeman MF, Tukey JW. Transformations related to the angular and the square root. *Ann. Math. Statist.* 1950;21:607–11.
- 23 Higgins JPT, Thompson SG. Quantifying heterogeneity in a meta-analysis. *Stat Med* 2002;21:1539–58.
- 24 Egger M, Davey Smith G, Schneider M, *et al.* Bias in meta-analysis detected by a simple, graphical test. *BMJ* 1997;315:629–34.
- 25 Boekel L, Steenhuis M, Hooijberg F, *et al.* Antibody development after COVID-19 vaccination in patients with autoimmune diseases in the Netherlands: a substudy of data from two prospective cohort studies. *Lancet Rheumatol* 2021;3:e778–88.
- 26 Perry C, Luttwak E, Balaban R, *et al.* Efficacy of the BNT162b2 mRNA COVID-19 vaccine in patients with B-cell non-Hodgkin lymphoma. *Blood Adv* 2021;5:3053–61.
- 27 Haskin O, Ashkenazi-Hoffnung L, Ziv N, *et al.* Serological response to the BNT162b2 COVID-19 mRNA vaccine in adolescent and young adult kidney transplant recipients. *Transplantation* 2021;105:e226–33.
- 28 Herishanu Y, Avivi I, Aharon A, *et al.* Efficacy of the BNT162b2 mRNA COVID-19 vaccine in patients with chronic lymphocytic leukemia. *Blood* 2021;137:3165–73.
- 29 Gurion R, Rozovski U, Itchaki G, *et al.* Humoral serologic response to the BNT162b2 vaccine is abrogated in lymphoma patients within the first 12 months following treatment with anti-CD20 antibodies. *Haematologica* 2021.
- 30 Benjamini O, Rokach L, Itchaki G, *et al.* Safety and efficacy of BNT162b mRNA Covid19 vaccine in patients with chronic lymphocytic leukemia. *Haematologica* 2021. doi:10.3324/haematol.2021.279196. [Epub ahead of print: 29 Jul 2021].
- 31 Ammitzbøll C, Bartels LE, Bøgh Andersen J, *et al.* Impaired antibody response to the BNT162b2 messenger RNA coronavirus disease 2019 vaccine in patients with systemic lupus erythematosus and rheumatoid arthritis. *ACR Open Rheumatol* 2021;3:622–8.
- 32 Bigaut K, Kremer L, Fleury M, *et al.* Impact of disease-modifying treatments on humoral response after COVID-19 vaccination: a mirror of the response after SARS-CoV-2 infection. *Rev Neurol* 2021;177:1237–40.
- 33 Thakkar A, Gonzalez-Lugo JD, Goradia N, *et al.* Seroconversion rates following COVID-19 vaccination among patients with cancer. *Cancer Cell* 2021;39:1081–90.
- 34 Furer V, Eviatar T, Zisman D, *et al.* Immunogenicity and safety of the BNT162b2 mRNA COVID-19 vaccine in adult patients with autoimmune inflammatory rheumatic diseases and in the general population: a multicentre study. *Ann Rheum Dis* 2021;80:annrheumdis-2021-220647.
- 35 Seyahi E, Bakhtiyarlı G, Oztas M, *et al.* Antibody response to inactivated COVID-19 vaccine (CoronaVac) in immune-mediated diseases: a controlled study among hospital workers and elderly. *Rheumatol Int* 2021;41:1429–40.
- 36 Braun-Moscovici Y, Kaplan M, Markovits D. Humoral response to Pfizer mRNA vaccine against SARS CoV2, in patients with autoimmune inflammatory rheumatic diseases and the impact on the rheumatic disease activity. *medRxiv* 2021.
- 37 Tallantyre EC, Vickaryous N, Anderson V. COVID-19 vaccine response in people with multiple sclerosis. *medRxiv* 2021.
- 38 Maneikis K, Šablauskas K, Ringelevičiūtė U, *et al.* Immunogenicity of the BNT162b2 COVID-19 mRNA vaccine and early clinical outcomes in patients with haematological malignancies in Lithuania: a national prospective cohort study. *Lancet Haematol* 2021;8:e583–92.
- 39 Sormani MP, Inglese M, Schiavetti I, *et al.* Effect of SARS-CoV-2 mRNA vaccination in MS patients treated with disease modifying therapies. *EBioMedicine* 2021;72:103581.
- 40 Adetifa IMO, Lugos MD, Hammond A, *et al.* Comparison of two interferon gamma release assays in the diagnosis of Mycobacterium tuberculosis infection and disease in the Gambia. *BMC Infect Dis* 2007;7:122.
- 41 Kroon FP, van Dissel JT, Labadie J, *et al.* Antibody response to diphtheria, tetanus, and poliomyelitis vaccines in relation to the number of CD4+ T lymphocytes in adults infected with human immunodeficiency virus. *Clin Infect Dis* 1995;21:1197–203.
- 42 Horby PW, Mafham M, *et al.* Casirivimab and imdevimab in patients admitted to hospital with COVID-19 (recovery): a randomised, controlled, open-label, platform trial. *medRxiv* 2021.