

Supplemental Table 1: Baseline characteristics by stroke progression groups (based on quartiles of ASPECTS decay)

	Total	Total	<0.7 pt/h	<0.7 pt/h	0.7-1.2 pt/h	0.7-1.2 pt/h	1.2-1.8 pt/h	1.2-1.8 pt/h	>1.8 pt/h	>1.8 pt/h	P-value
	N*	(N = 376)	N*	(N = 94)	N*	(N = 95)	N*	(N = 94)	N*	(N = 93)	
Group - no. (%)	376		94		95		94		93		0.39
Thrombectomy alone		185 (49.2%)		43 (45.7%)		45 (47.4%)		44 (46.8%)		53 (57.0%)	
Alteplase plus thrombectomy		191 (50.8%)		51 (54.3%)		50 (52.6%)		50 (53.2%)		40 (43.0%)	
Treatment received - no. (%)	376		94		95		94		93		0.49
Thrombectomy alone		184 (48.9%)		43 (45.7%)		45 (47.4%)		44 (46.8%)		52 (55.9%)	
Alteplase plus thrombectomy		192 (51.1%)		51 (54.3%)		50 (52.6%)		50 (53.2%)		41 (44.1%)	
Age at inclusion - median (IQR)	376	73 (65, 81)	94	75 (67, 82)	95	73 (67, 82)	94	71 (64, 78)	93	71 (58, 77)	0.025
Female sex - no. (%)	376	195 (51.9%)	94	56 (59.6%)	95	51 (53.7%)	94	45 (47.9%)	93	43 (46.2%)	0.25
NIHSS - median (IQR)	376	17 (13, 20)	94	15 (11, 19)	95	16 (12, 19)	94	18 (15, 21)	93	18 (14, 21)	0.003
Pre-stroke mRS - no. (%)	376		94		95		94		93		0.89
0		319 (84.8%)		79 (84.0%)		81 (85.3%)		78 (83.0%)		81 (87.1%)	
1		56 (14.9%)		14 (14.9%)		14 (14.7%)		16 (17.0%)		12 (12.9%)	
4		1 (0.3%)		1 (1.1%)		0 (0.0%)		0 (0.0%)		0 (0.0%)	
Weight (kg) - median (IQR)	353	75 (65, 85)	93	75 (62, 84)	92	72 (64, 83)	86	80 (65, 87)	82	75 (66, 85)	0.38
Systolic blood pressure (mmHg) - median (IQR)	372	148 (132, 163)	92	150 (132, 168)	95	150 (136, 167)	92	150 (138, 166)	93	144 (128, 156)	0.025
Diastolic blood pressure (mmHg) - median (IQR)	369	80 (70, 90)	91	80 (71, 91)	94	79 (70, 89)	92	80 (70, 93)	92	80 (70, 90)	0.83
Heart rate (beats per minute) - median (IQR)	366	74 (63, 88)	90	76 (64, 90)	92	76 (63, 86)	91	75 (63, 90)	93	72 (63, 84)	0.52
Risk factors											

Previous ischemic stroke - no. (%)	362	38 (10.5%)	91	10 (11.0%)	92	9 (9.8%)	90	14 (15.6%)	89	5 (5.6%)	0.18
Previous transient ischemic attack - no. (%)	357	21 (5.9%)	92	9 (9.8%)	90	6 (6.7%)	86	4 (4.7%)	89	2 (2.2%)	0.17
History of hypertension - no. (%)	366	229 (62.6%)	93	52 (55.9%)	91	54 (59.3%)	92	64 (69.6%)	90	59 (65.6%)	0.22
History of atrial fibrillation - no. (%)	355	36 (10.1%)	89	6 (6.7%)	89	11 (12.4%)	88	11 (12.5%)	89	8 (9.0%)	0.51
History of hypercholesterolemia - no. (%)	355	123 (34.6%)	88	29 (33.0%)	88	29 (33.0%)	91	35 (38.5%)	88	30 (34.1%)	0.87
Previous intracerebral hemorrhage - no. (%)	365	2 (0.5%)	94	0 (0.0%)	94	1 (1.1%)	88	1 (1.1%)	89	0 (0.0%)	0.62
Prior myocardial infarction - no. (%)	359	40 (11.1%)	92	8 (8.7%)	90	8 (8.9%)	88	13 (14.8%)	89	11 (12.4%)	0.52
Medication											
Warfarin or other anticoagulant - no. (%)	376	13 (3.5%)	94	2 (2.1%)	95	3 (3.2%)	94	6 (6.4%)	93	2 (2.2%)	0.42
Aspirin - no. (%)	376	98 (26.1%)	94	22 (23.4%)	95	26 (27.4%)	94	28 (29.8%)	93	22 (23.7%)	0.72
Statine or other lipid lowering agent - no. (%)	376	112 (29.8%)	94	28 (29.8%)	95	26 (27.4%)	94	31 (33.0%)	93	27 (29.0%)	0.87
Lab values											
Blood glucose level (mmol/L) - median (IQR)	355	6.6 (5.8, 7.6)	88	6.3 (5.5, 7.4)	86	6.6 (5.9, 7.8)	89	6.8 (5.9, 8.1)	92	6.5 (5.7, 7.5)	0.10
International normalized ratio (INR) - median (IQR)	294	1.0 (1.0, 1.1)	70	1.0 (1.0, 1.1)	76	1.0 (1.0, 1.1)	71	1.0 (1.0, 1.1)	77	1.0 (1.0, 1.1)	0.84
Platelet count x 10 ⁹ (G/L) - median (IQR)	373	225 (187, 269)	93	215 (190, 270)	94	223 (183, 268)	94	230 (183, 274)	92	227 (190, 265)	0.79
Hemoglobin (g/L) - median (IQR)	376	137 (125, 146)	94	135 (126, 144)	95	138 (125, 146)	94	137 (124, 147)	93	137 (126, 149)	0.76
Glomerular filtration rate (mL/min) - median (IQR)	376	76 (62, 90)	94	75 (56, 87)	95	73 (63, 89)	94	78 (63, 91)	93	75 (62, 90)	0.58

Imaging											
Baseline imaging - no. (%)	376		94		95		94		93		0.48
CT		185 (49.2%)		40 (42.6%)		53 (55.8%)		46 (48.9%)		46 (49.5%)	
MRI		188 (50.0%)		54 (57.4%)		41 (43.2%)		47 (50.0%)		46 (49.5%)	
both		3 (0.8%)		0 (0.0%)		1 (1.1%)		1 (1.1%)		1 (1.1%)	
ASPECTS (core lab) - median (IQR)	376	8.0 (7.0, 9.0)	94	9.0 (9.0, 10)	95	8.0 (8.0, 9.0)	94	8.0 (7.0, 8.0)	93	6.0 (5.0, 7.0)	<0.001
Baseline intracranial occlusion site - no. (%)	376		94		95		94		93		
Distal ICA - I		14 (3.7%)		6 (6.4%)		2 (2.1%)		3 (3.2%)		3 (3.2%)	
Distal ICA - I and M1		2 (0.5%)		0 (0.0%)		2 (2.1%)		0 (0.0%)		0 (0.0%)	
Distal ICA - L		52 (13.8%)		6 (6.4%)		18 (18.9%)		18 (19.1%)		10 (10.8%)	
Distal ICA - T		39 (10.4%)		2 (2.1%)		12 (12.6%)		15 (16.0%)		10 (10.8%)	
Distal M1		113 (30.1%)		36 (38.3%)		28 (29.5%)		27 (28.7%)		22 (23.7%)	
Distal M2		4 (1.1%)		2 (2.1%)		0 (0.0%)		2 (2.1%)		0 (0.0%)	
Proximal M1		135 (35.9%)		37 (39.4%)		30 (31.6%)		27 (28.7%)		41 (44.1%)	
Proximal M2		17 (4.5%)		5 (5.3%)		3 (3.2%)		2 (2.1%)		7 (7.5%)	
Distal occlusion sites - no. (%)	376		94		95		94		93		0.14
no		242 (64.4%)		51 (54.3%)		64 (67.4%)		63 (67.0%)		64 (68.8%)	
yes		134 (35.6%)		43 (45.7%)		31 (32.6%)		31 (33.0%)		29 (31.2%)	
Tandem lesion - no. (%)	376	57 (15.2%)	94	10 (10.6%)	95	24 (25.3%)	94	17 (18.1%)	93	6 (6.5%)	0.002
Timelines											
Time from stroke onset to randomisation (min) - median (IQR)	376	129 (100, 170)	94	152 (122, 201)	95	134 (95, 181)	94	125 (105, 165)	93	112 (82, 135)	<0.001
Time from arrival at emergency department to IV t-PA (min) - median (IQR)	192	54 (36, 72)	51	56 (34, 80)	50	46 (30, 76)	50	55 (41, 70)	41	55 (39, 70)	0.56

Door-to-puncture time (min) - median (IQR)	376	77 (61, 94)	94	81 (64, 105)	95	73 (53, 94)	94	79 (64, 99)	93	76 (59, 86)	0.031
Time from randomization to groin puncture (min) - median (IQR)	376	28 (20, 38)	94	31 (23, 42)	95	26 (20, 34)	94	27 (19, 39)	93	30 (19, 38)	0.07
Time from start of intravenous alteplase to groin puncture (min) - median (IQR)	192	24 (15, 35)	51	30 (20, 44)	50	20 (15, 29)	50	26 (18, 35)	41	22 (14, 34)	0.030

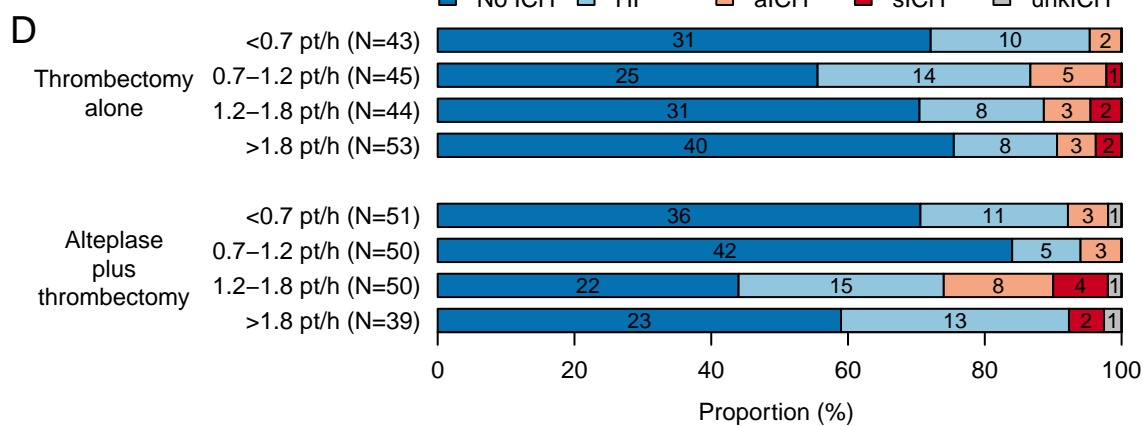
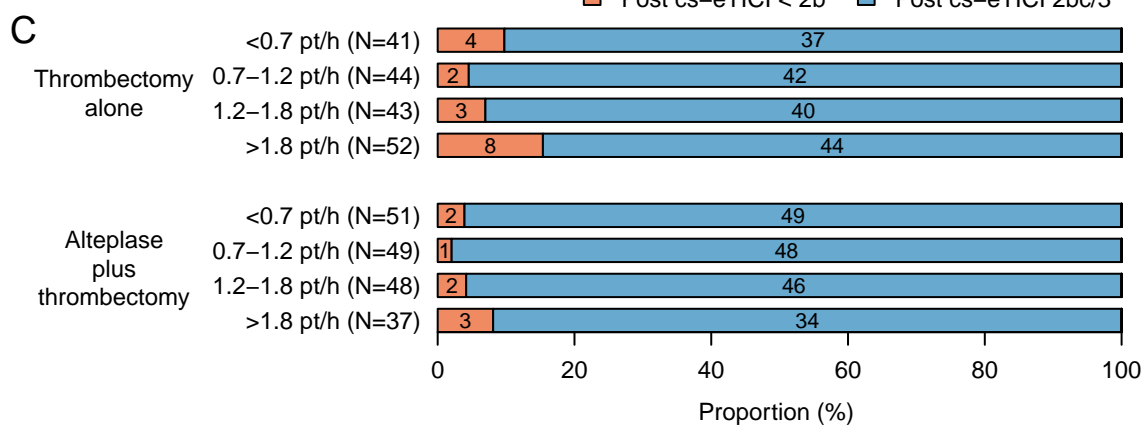
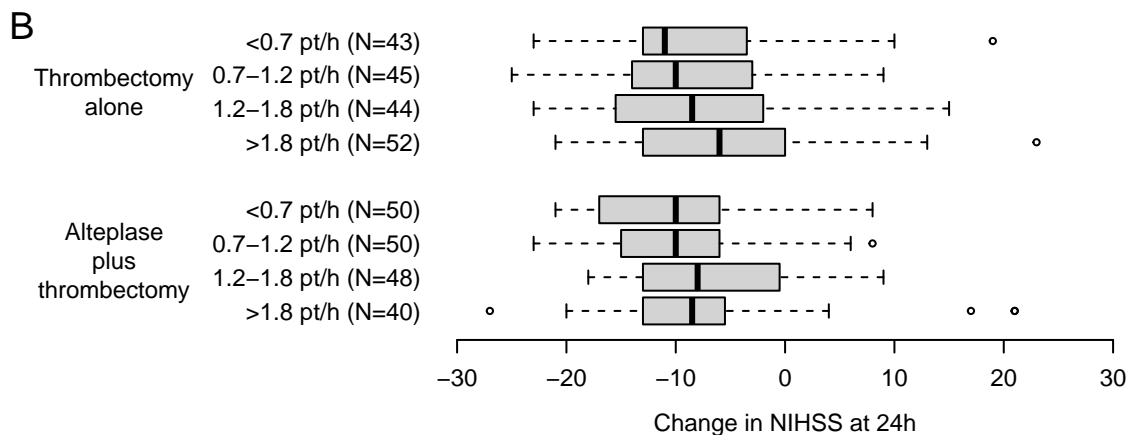
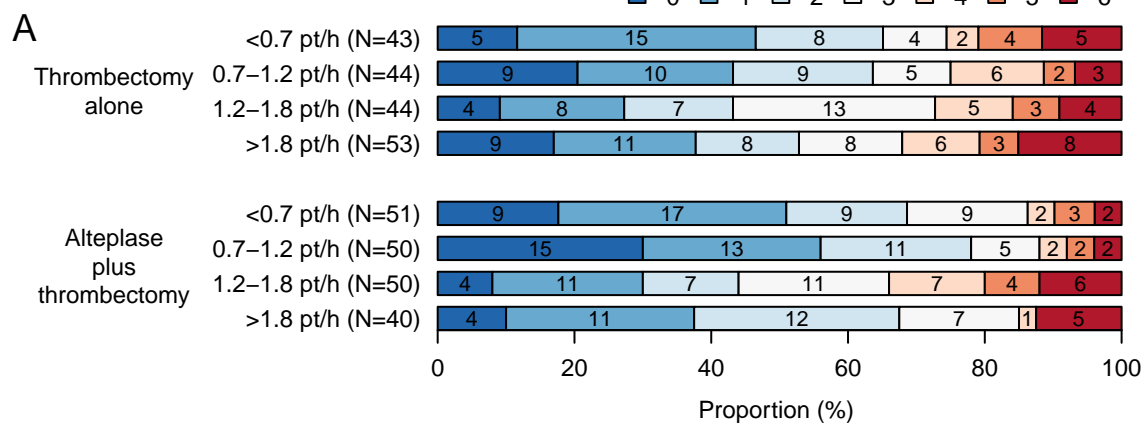
N*: number of patients with non-missing data

Supplemental table 2: Procedural characteristics in stroke progression subgroups (based on quartiles of ASPECTS decay)

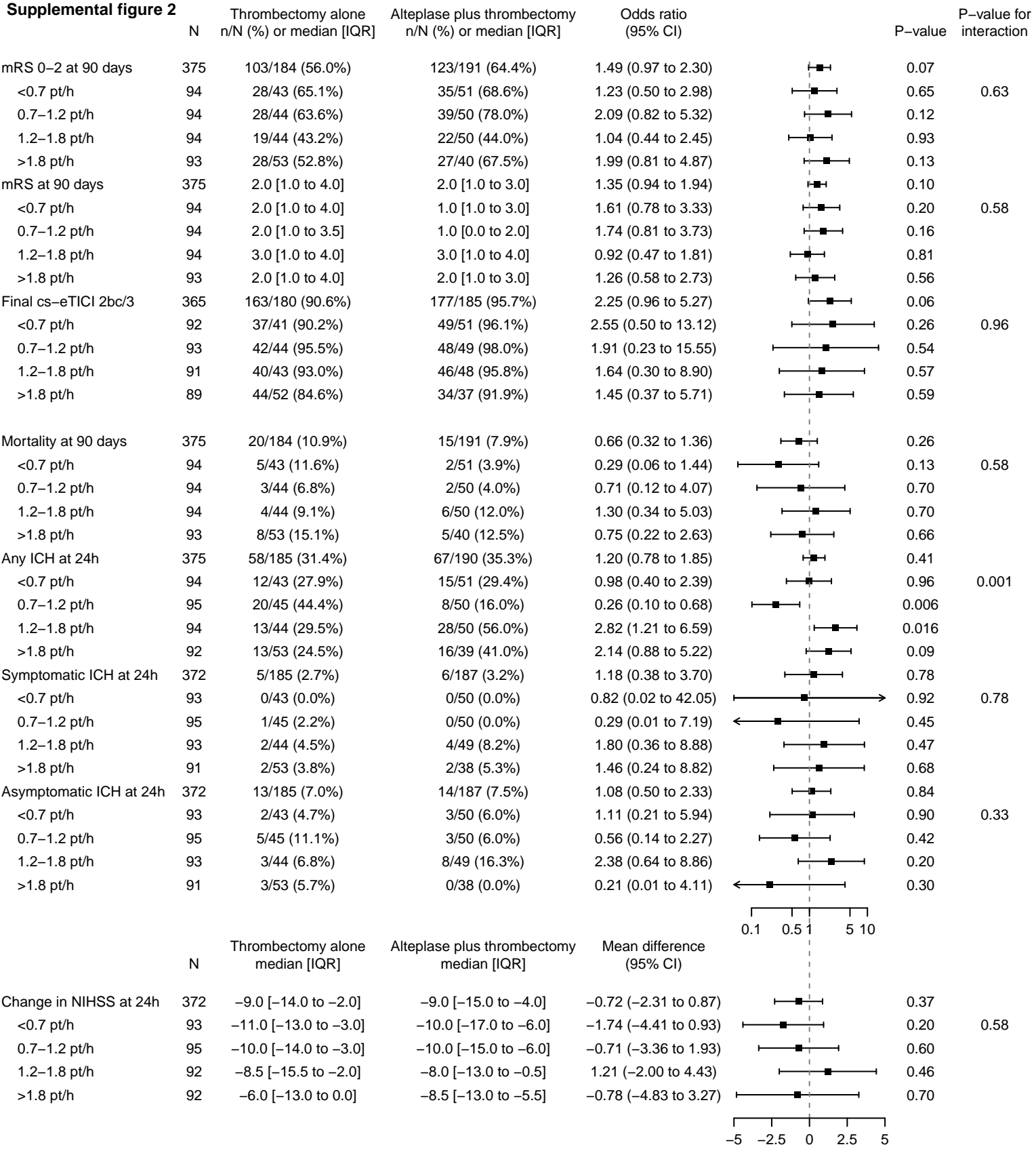
	Total	Total	<0.7 pt/h	<0.7 pt/h	0.7-1.2 pt/h	0.7-1.2 pt/h	1.2-1.8 pt/h	1.2-1.8 pt/h	>1.8 pt/h	>1.8 pt/h	P-value
	N*	(N = 376)	N*	(N = 94)	N*	(N = 95)	(N = 94)	(N = 94)	(N = 93)	(N = 93)	
Number of passes - median (IQR)	376	1.0 (1.0, 2.5)	94	1.0 (1.0, 2.0)	95	2.0 (1.0, 2.0)	94	2.0 (1.0, 3.0)	93	1.0 (1.0, 3.0)	0.80
Any mechanical device used - no. (%)	376	369 (98.1%)	94	91 (96.8%)	95	95 (100.0%)	94	90 (95.7%)	93	93 (100.0%)	0.033
Mechanical thrombectomy performed - no. (%)	376	356 (94.7%)	94	84 (89.4%)	95	94 (98.9%)	94	87 (92.6%)	93	91 (97.8%)	0.008
Balloon guide catheter used - no. (%)	375	165 (44.0%)	94	40 (42.6%)	95	46 (48.4%)	93	32 (34.4%)	93	47 (50.5%)	0.12
Distal aspiration catheter used - no. (%)	375	281 (74.9%)	94	69 (73.4%)	95	71 (74.7%)	93	75 (80.6%)	93	66 (71.0%)	0.47
Extracranial Stenting - no. (%)	375	35 (9.3%)	94	7 (7.4%)	95	11 (11.6%)	93	12 (12.9%)	93	5 (5.4%)	0.26
Peri-Interventional Aspirin - no. (%)	374	38 (10.2%)	94	7 (7.4%)	95	11 (11.6%)	92	12 (13.0%)	93	8 (8.6%)	0.57
Further thrombectomy device used after Solitaire - no. (%)	376	110 (29.3%)	94	25 (26.6%)	95	27 (28.4%)	94	33 (35.1%)	93	25 (26.9%)	0.55
Conscious sedation - no. (%)	376	183 (48.7%)	94	58 (61.7%)	95	45 (47.4%)	94	37 (39.4%)	93	43 (46.2%)	0.019
General anesthesia - no. (%)	376	169 (44.9%)	94	32 (34.0%)	95	37 (38.9%)	94	50 (53.2%)	93	50 (53.8%)	0.010
Reason for general anesthesia - no. (%)	169		32		37		50		50		0.86
Hospital standard practice		128 (75.7%)		24 (75.0%)		27 (73.0%)		40 (80.0%)		37 (74.0%)	
Clinically indicated		41 (24.3%)		8 (25.0%)		10 (27.0%)		10 (20.0%)		13 (26.0%)	

N*: number of patients with non-missing data

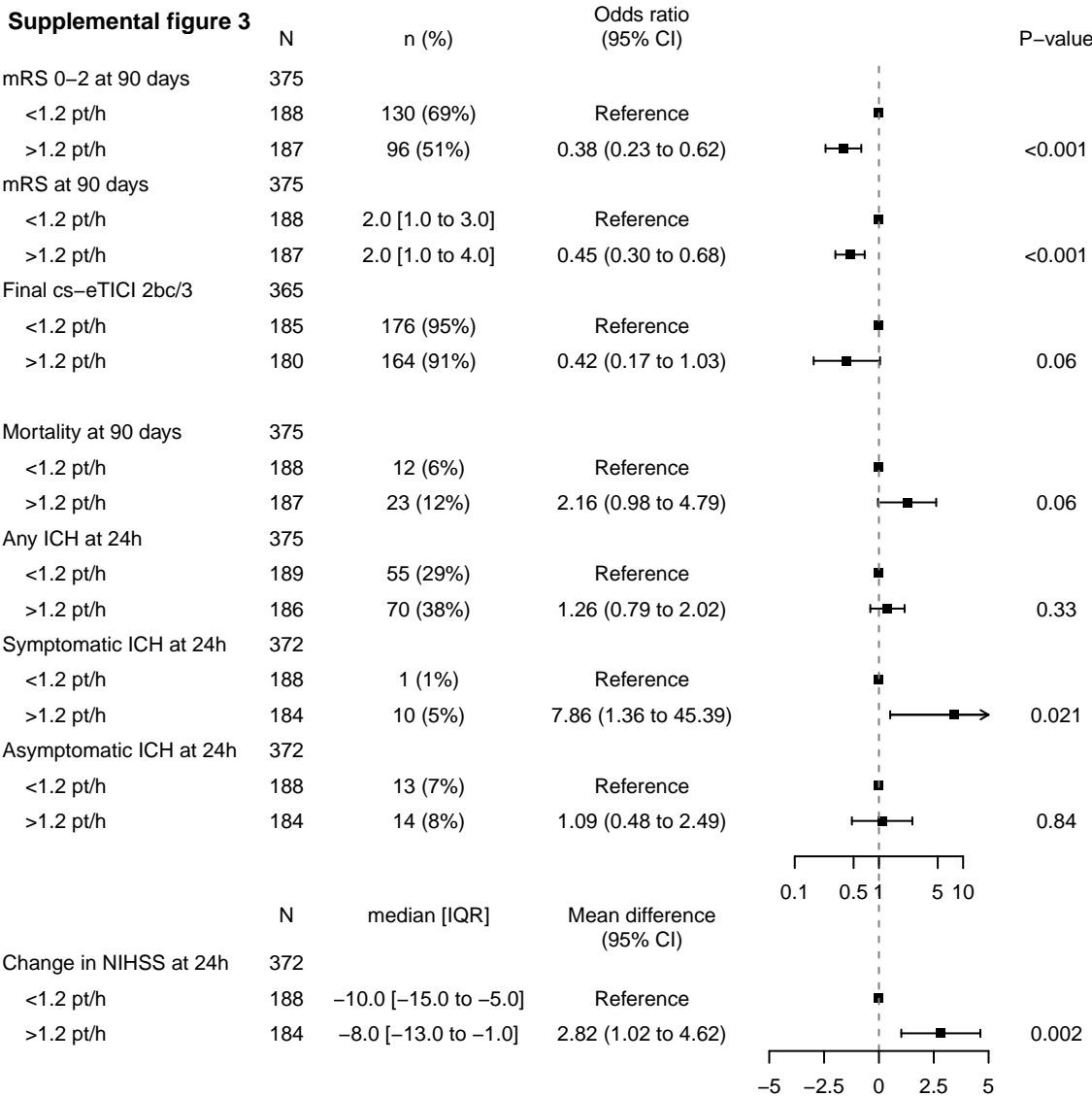
Supplemental figure 1



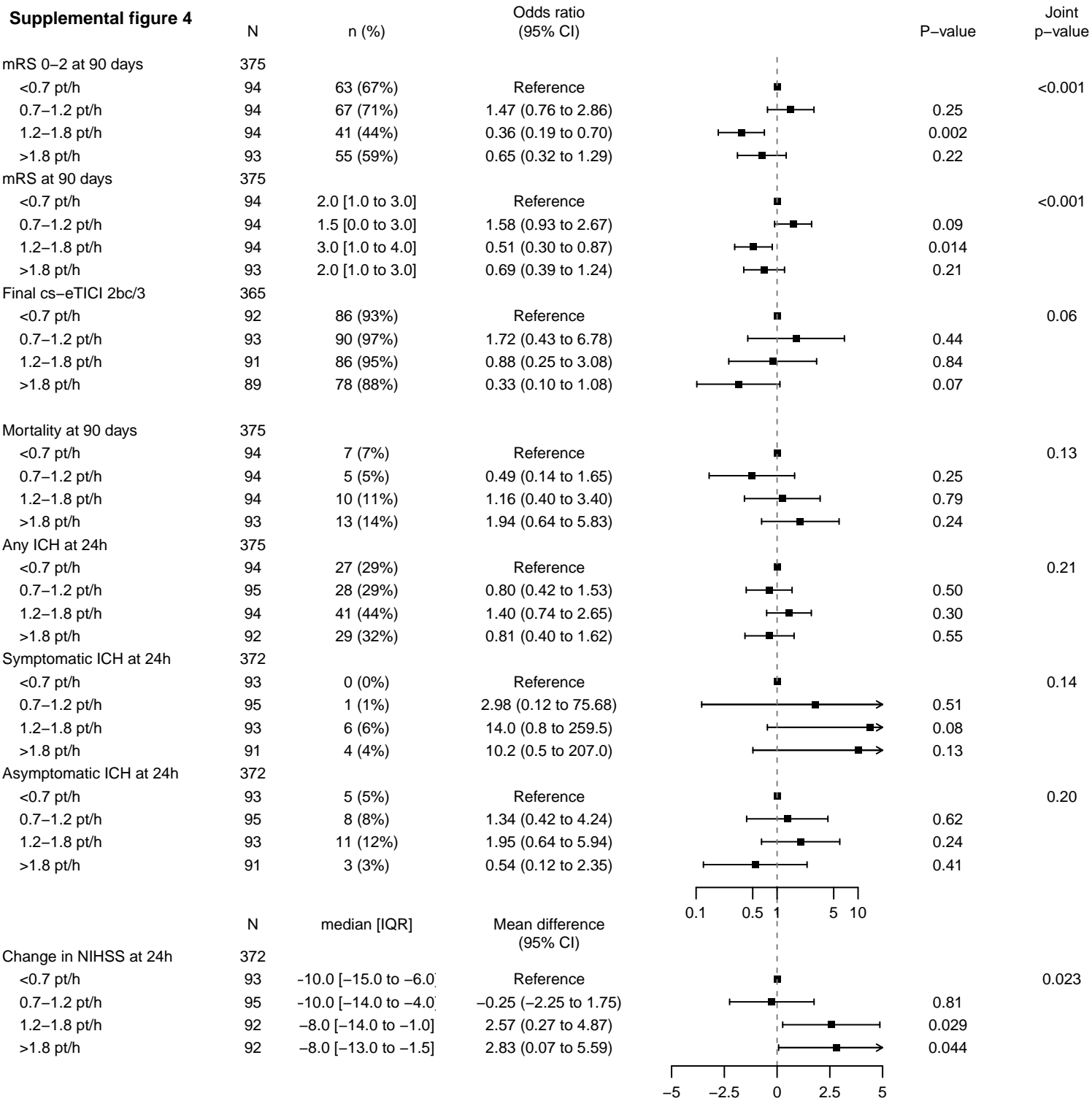
Supplemental figure 2

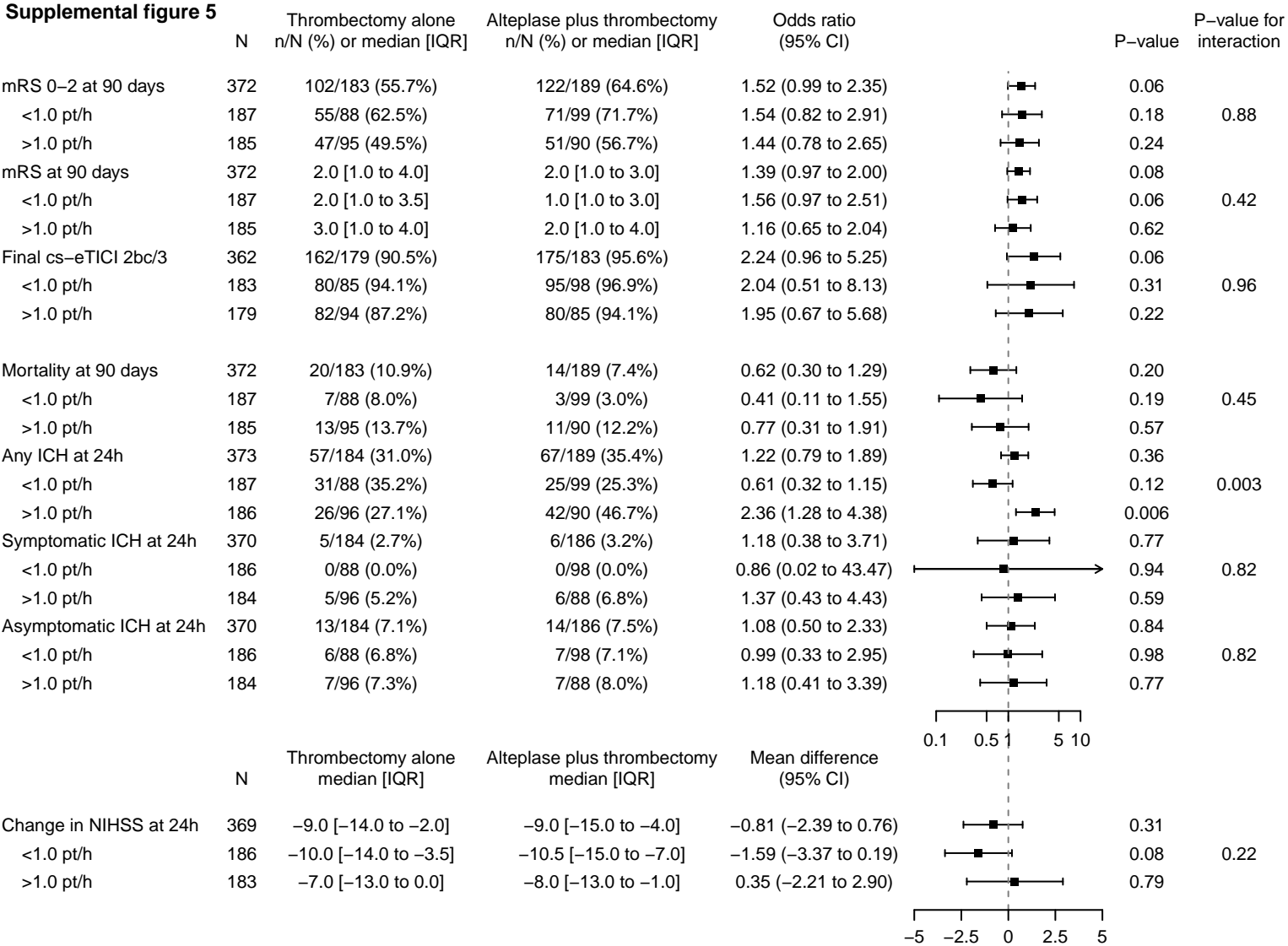


Supplemental figure 3

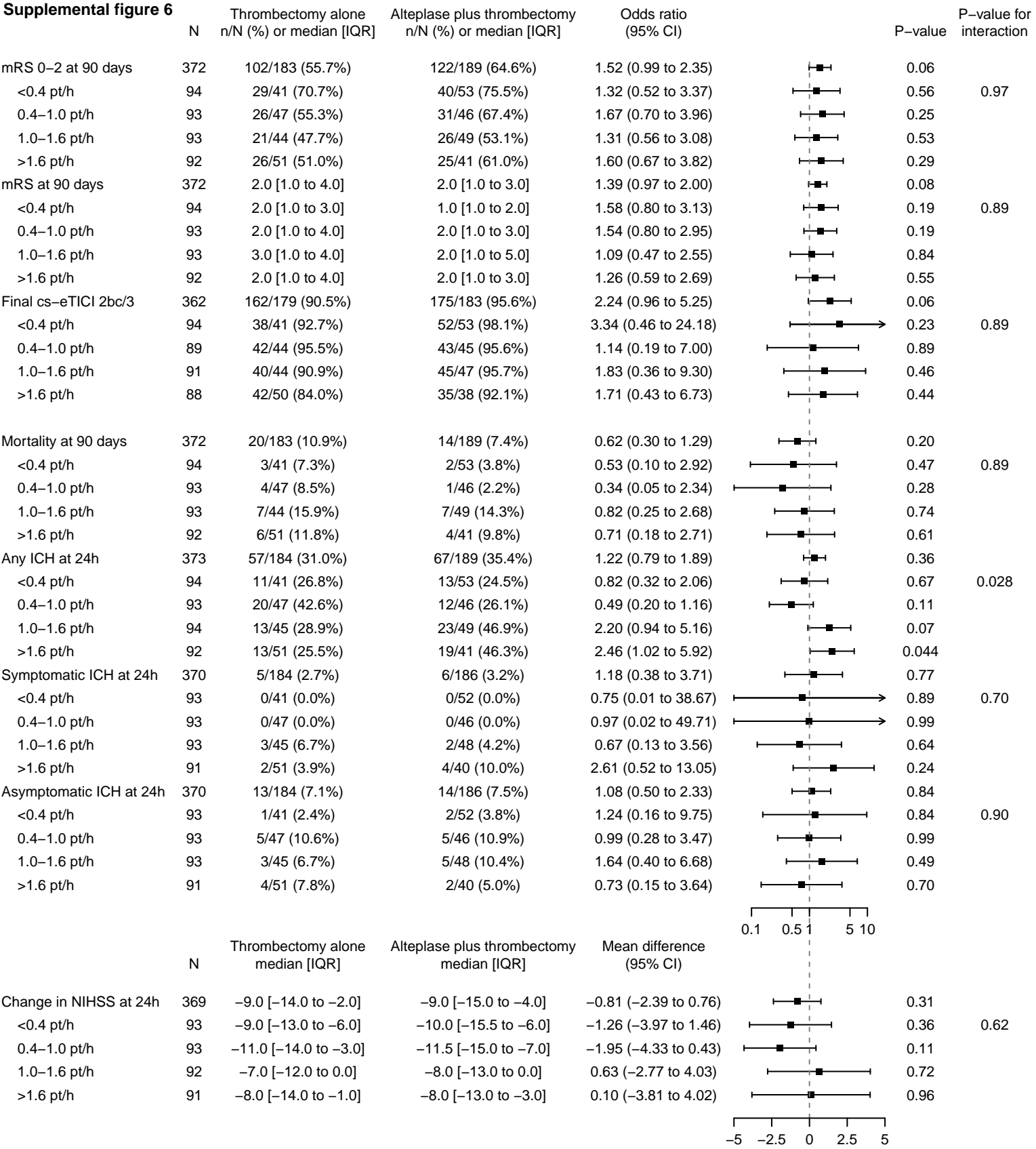


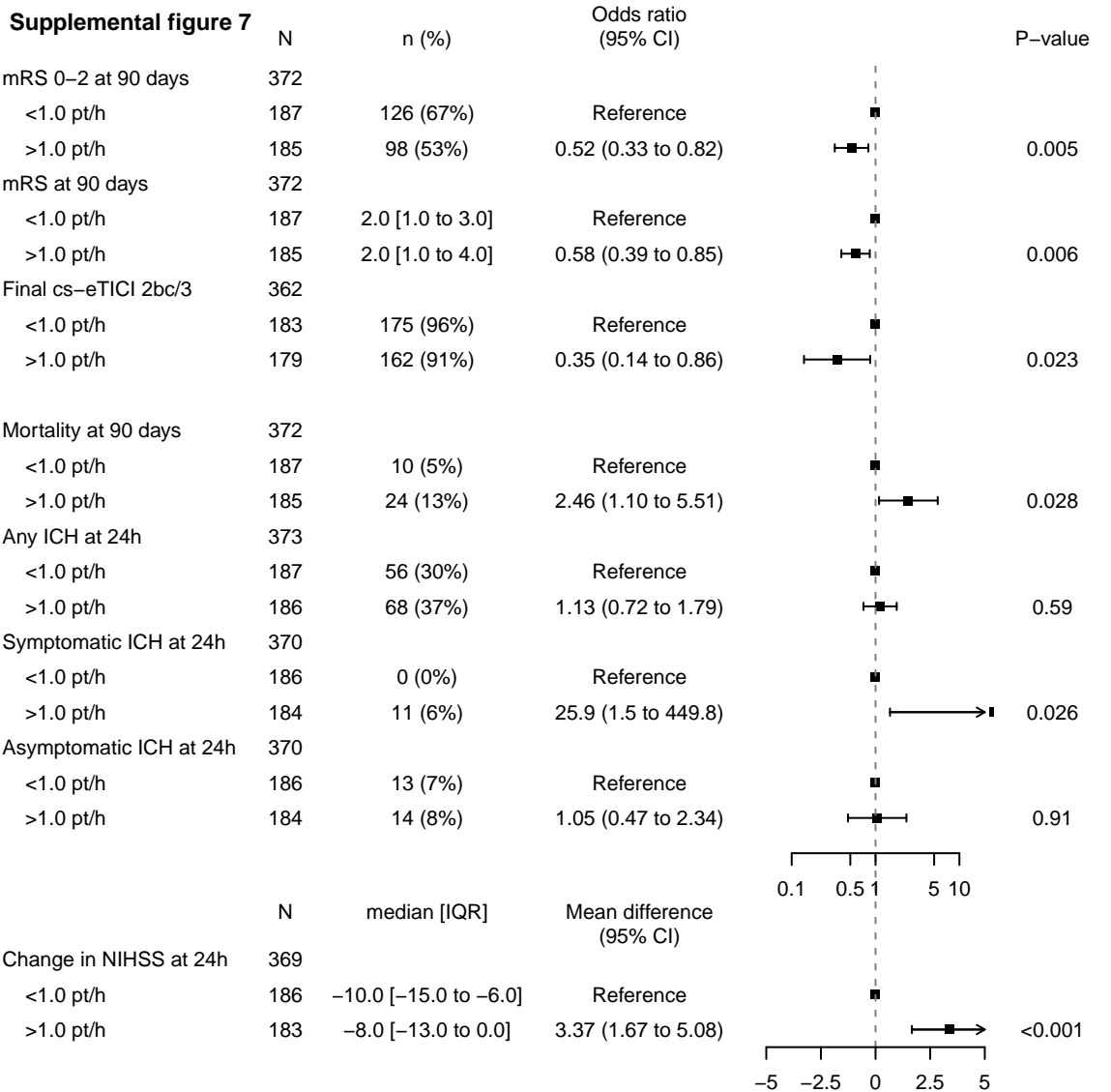
Supplemental figure 4



Supplemental figure 5


Supplemental figure 6





Supplemental figure 8
