

Rinsing solutions containing natural extracts and fluoride prevent enamel erosion *in vitro*

Abstract

Tommy BAUMANN¹ 

Samira Helena NIEMEYER¹ 

Adrian LUSSI^{1,2} 

Taís SCARAMUCCI³ 

Thiago Saads CARVALHO¹ 

Polyphenols interact with salivary proteins and thus can improve the pellicle's erosion protective properties. This effect could be exploited to create rinsing solutions with polyphenols as active ingredients for erosion prevention. Different from the current gold standard for erosion protective rinsing solutions, these rinses would not rely on stannous ions. This would offer alternatives for patients with concerns regarding the composition of rinsing solutions and preferring bio-products. Objective: To develop an erosion-preventive rinsing solution containing natural polyphenol-rich extracts. Methodology: Solutions were prepared with polyphenols from either grapeseed extract or cranberry extract, 500 ppm fluoride added, and additionally flavors and sweeteners. Controls were deionized water, 500 ppm fluoride solution, and the gold standard rinse in the field (Sn²⁺/F⁻). In total, 135 enamel specimens (n=15/group) were subjected to five cycles of salivary pellicle formation (30 min, 37°C), modification with the solutions (2 min, 25°C), further salivary pellicle formation (60 min, 37°C), and erosive challenge (1 min, 1% citric acid, pH 3.6). Relative surface microhardness (rSMH), surface reflection intensity (rSRI), and amount of calcium release (CaR) were investigated. Data were analyzed with Kruskal-Wallis and Wilcoxon rank sum tests ($\alpha=0.05$). Results: The polyphenol solutions containing fluoride, as well as additional flavors, protected enamel better than fluoride alone, and similar to the Sn²⁺/F⁻ solution, when investigating both rSMH and CaR. When measuring rSRI, Sn²⁺/F⁻ showed the best protection, while the polyphenol solutions were similar to fluoride. Conclusion: For two of the three assessed parameters (rSMH and CaR), both developed polyphenol-rich rinsing solutions were able to protect enamel from erosion, improving/potentializing the effect of fluoride and matching the protection offered by the current gold standard rinsing solution.

Keywords: Dental pellicle. Dental erosion. Enamel. Polyphenols. Mouth rinse.

Corresponding address:
Tommy Baumann

University of Bern, Department of Restorative,
Preventive and Pediatric Dentistry - Dental Research
Center - Freiburgstrasse 3 - CH-3010 -
Bern - Switzerland.

e-mail address: tommy.baumann@unibe.ch
Phone: +41316840587.

Received: March 24, 2023

Revised: May 11, 2023

Accepted: June 08, 2023

Editor: Linda Wang
Associate Editor: Daniela Rios Honório

¹University of Bern, Department of Restorative, Preventive and Pediatric Dentistry, School of Dental Medicine, Bern, Switzerland.

²Department of Operative Dentistry and Periodontology, Center for Dental Medicine, Medical Center, University of Freiburg, Faculty of Medicine, University of Freiburg, Freiburg, Germany.

³Universidade de São Paulo, Faculdade de Odontologia, Departamento de Odontologia Restauradora, São Paulo, SP, Brasil.



Introduction

The prevalence of erosive tooth wear (ETW) has greatly increased over the last decades. Although the increase has partially stabilized, the overall prevalence remains high.¹ The main cause of ETW is the direct contact of the tooth surfaces with demineralizing substances. The substances can be of intrinsic or extrinsic origin,^{2,3} in which especially the increased consumption of acidic beverages has been linked to an increase in the prevalence.⁴ Since ETW is an irreversible process, which may require restorations in severe cases, effective preventive measures are needed.

The salivary pellicle, formed almost instantaneously on tooth surfaces upon contact with saliva,⁵ provides some protection from erosion.⁶ It is mainly made up of salivary proteins; however, it also contains lipids and other macromolecules from saliva, as well as bacterial components.⁵ The components of the pellicle provide a target for modifications, which can lead to improved erosion protection. Recently, several substances have been tested and shown to affect the protective properties of the pellicle in a positive way.⁷⁻¹¹ While many of those modifications add new components to the pellicle, polyphenols may interact with and crosslink the existing pellicle proteins, leading to increased binding of salivary proteins to the pellicle.¹² Thus, the pellicle gets thicker and denser,⁵ which increases its resistance to acidic attacks and limits diffusion across it. We recently showed an erosion protection by treating pellicles with natural extracts and teas, which contain large amounts of polyphenols.¹¹

Polyphenols contain multiple phenol units and are divided into several subclasses. Many plants produce them as secondary metabolites involved in defense against pathogens and predation, protection from UV radiation, or attraction of pollinators. In the oral environment, polyphenols influence many sensory aspects of foods and may contribute to flavor, color, odor, bitterness, or astringency. Furthermore, they have many positive effects on health and protect against several chronic diseases like development of cancers, cardiovascular diseases, diabetes, osteoporosis, and neurodegenerative diseases.¹³

The use of polyphenol rich natural extracts has shown promising results to prevent erosion.¹¹ Since polyphenols are natural products and commonly found in many foods and drinks, the acceptance for their use as preventive/therapeutic agents is likely to be high,

offering a great potential for the development of erosion preventive products. Therefore, this *in vitro* study aimed to develop a rinsing solution containing such extracts and to compare its effect with the current gold standard for erosion preventive rinsing solutions.

Methodology

Ethics

This study was in compliance with approved guidelines and regulations of the local ethics committee (Kantonale Ethikkommission: KEK). The teeth and saliva used had been pooled and, thus, were categorized as "irreversibly anonymized" by the ethics committee. Therefore, no specific approval from the committee was necessary.

Teeth/specimen preparation

From a pool of extracted human molars stored in 2% chloramine T trihydrate solution, 135 enamel specimens were prepared. The specimens were prepared as previously described.¹¹ In brief, teeth were embedded in acrylic resin and were serially ground flat and polished with decreasing grain size, with a final polish with a grain size of 1 μm just before the start of the experimental procedure. This resulted in standardized planar parallel specimens, with the outermost 200 μm of enamel removed. Natural variations of the surface and the fluoride content that mainly occur within the outermost surface layer of enamel were thereby minimized.

Saliva collection

Healthy donors from both sexes, from 20 to 30 years old, donated saliva. They refrained from eating or drinking for 2 h before saliva collection, which was performed in the mornings. To stimulate salivary flow the donors chewed on paraffin wax for 10 min and the stimulated whole saliva was collected in chilled vials. The saliva was pooled and centrifuged for 20 min at 4°C (4,000 g). The supernatant was divided into small aliquots and stored at -80°C until use.

Experimental groups

In total, nine experimental solutions were used. The rinsing solutions were prepared with commercially available extracts of grape seeds (OPC) and of cranberries (PAC), NaF, peppermint oil, and xylitol.

Figure 1 shows the composition of the groups. All groups were prepared with deionized water. To prepare the rinses, the contents (powder) of the extract capsules were dissolved in deionized water, mixed for 30 min at room temperature, and filtered. Solutions containing extracts were prepared to contain a final concentration of 2 mg/ml of polyphenols, according to the information provided by the manufacturers of the extracts. All solutions were prepared daily and the pH of all solutions was adjusted to 5.8 with HCl or NaOH, except for the commercial Sn²⁺/F⁻ solution, which was left unchanged at pH 4.5.

Experimental design / procedure

Using the software G*Power 3.1.9.4, an effect size of 3.569 was estimated with the results from the previous study with OPC.¹¹ This effect size was used for a sample size calculation with a desired power of 0.8, resulting in a sample size of n=3 per group. Expecting lower effect sizes due to adaptations to the protocol, a sample size of n=15 per group was selected. The 135 specimens were randomly allocated in the nine groups and underwent an initial assessment of the surface microhardness and reflection intensity. Then the specimens were individually subjected to five cycles consisting of: salivary pellicle formation (30 min, 37°C, no agitation), followed by treatment with the experimental rinsing solutions (10 ml, 2 min, 25°C, 70 rpm, travel path 50 mm), subsequent salivary pellicle formation (60 min, 37°C, no agitation), and an erosive challenge (10 ml, 1 min, 1% citric acid, pH 3.6, 70 rpm, travel path 50 mm). After each of these procedures, the specimens were washed with deionized water and dried with oil-free air. Between the cycles, the specimens were stored

in a humid chamber. The citric acid used for erosion was stored at 4°C for subsequent calcium analyses. After each erosive challenge, the surface microhardness was measured again. Moreover, the surface reflection intensity was measured again after the final cycle and removal of the pellicle remnants.

Surface microhardness (SMH)

Surface microhardness (SMH) was measured using a microhardness tester equipped with a Knoop diamond, with a load of 10 g for a dwell time of 10 s (UHL VMHT Microhardness Tester, UHL technische Mikroskopie GmbH & Co. KG, Asslar, Germany). SMH was measured at baseline (SMH_{initial}) and after each erosive challenge (SMH_i). Six indentations at 25 µm distance from each other were made for each measurement. The lengths of the long axes of the indentations were measured and used to calculate the hardness number, with the average of the six indentations being defined as the SMH at that time-point. The relative SMH (rSMH) at each time-point was calculated using the equation:

$$rSMH = \left(\frac{SMH_i}{SMH_{initial}} \right) \times 100.$$

Surface reflection intensity (SRI)

The surface reflection intensity (SRI) was measured with a custom-built reflectometer.¹⁴ The maximum value of the SRI was registered with a specific software and it was measured at baseline (SRI_{initial}) and after the final experimental cycle (SRI_{final}). Before the final SRI measurement, the specimens were immersed in 3% NaOCl (5 min, 25°C, 70 rpm, travel path 50 mm) to remove remnants of the salivary pellicle. The relative SRI (rSRI) was then calculated according to the equation: $rSRI = \left(\frac{SRI_{final}}{SRI_{initial}} \right) \times 100.$

group	polyphenol (2 mg/ml)	F ⁻ (as NaF)	aroma	sweetener	pH
Control (water)	-	-	-	-	5.8
F ⁻ (500ppm)	-	500 ppm	-	-	5.8
OPC	OPC*	-	-	-	5.8
OPC+F ⁻ (500ppm)	OPC*	500 ppm	-	-	5.8
OPC-rinse	OPC*	500 ppm	peppermint oil (480 µl/l)	Xylitol (50 g/l)	5.8
PAC	PAC [‡]	-	-	-	5.8
PAC+F ⁻ (500ppm)	PAC [‡]	500 ppm	-	-	5.8
PAC-rinse	PAC [‡]	500 ppm	peppermint oil (480 µl/l)	Xylitol (50 g/l)	5.8
Sn ²⁺ /F ⁻ †	-	500 ppm [‡]	anethole, anise oil, mint extract, menthol (> 100 ppm)	saccharine	4.5

Figure 1- Experimental groups and their compositions. * Fairvital B.V., Germany. Content of OPC in extract: 95%; [‡] BioProphyll® GmbH (Urocyan), Germany. Content of PAC in extract: 6%; [†] elmex® erosion protection dental rinse; [‡] 375 ppm as NaF and 125 ppm as AmF

Calcium release (CaR)

The calcium concentration in the citric acid after the erosive challenge was analyzed using an atomic absorption spectrometer (AAAnalyst 400, Perkin Elmer Analytical Instruments, Waltham, MA, USA). Lanthanum nitrate (0.5%, lanthanum nitrate hexahydrate: $\text{La}[\text{NO}_3]_3 \cdot 6\text{H}_2\text{O}$) was added to the citric acid to eliminate the interference of other ions. The concentration was used to determine the amount of calcium released (CaR) by each specimen. CaR was normalized to the surface area of the specimens, which was determined by taking a picture of the surface using a microscope (Leica, M420, equipped with camera DFC495) with 16 × magnification, and then tracing the contour of the exposed surface with the software program IM500.

Statistics

The software R 3.5.3 was used for statistical analyses. All significance levels were set at $\alpha=0.05$. Data of the different parameters assessed were analyzed separately. Shapiro-Wilk tests were performed to analyze whether the data were normally distributed. Since this was rejected for some groups, subsequently non-parametric tests were performed. Furthermore,

Kruskal-Wallis tests were performed to analyze whether there were differences between groups. If a significant result was found, post-hoc pairwise comparisons were performed by Wilcoxon rank sum tests with Benjamini-Hochberg corrections for multiple testing.

Results

Hardness

Initially, absolute Knoop hardness values of all specimens ranged from 342.0 to 438.7, with values from 320 to 500 considered normal for polished enamel at the given measurement settings. The average Knoop hardness for each of the groups (median (IQR)) ranged from 395.0 (388.7-405.1) to 419.0 (406.3-423.3), without significant differences between the groups.

Hardness decreased during the experiments and Figure 2 shows the final relative surface hardness (rSMH, normalized to the initial values). The extract groups alone (OPC and PAC) showed no differences to the control group, while fluoride ($\text{F}^-_{(500\text{ppm})}$) and $\text{Sn}^{2+}/\text{F}^-$ led to a significant protection. Although the extracts alone showed no effect, their combination with fluoride ($\text{OPC}+\text{F}^-_{(500\text{ppm})}$ and $\text{PAC}+\text{F}^-_{(500\text{ppm})}$) led to a significant

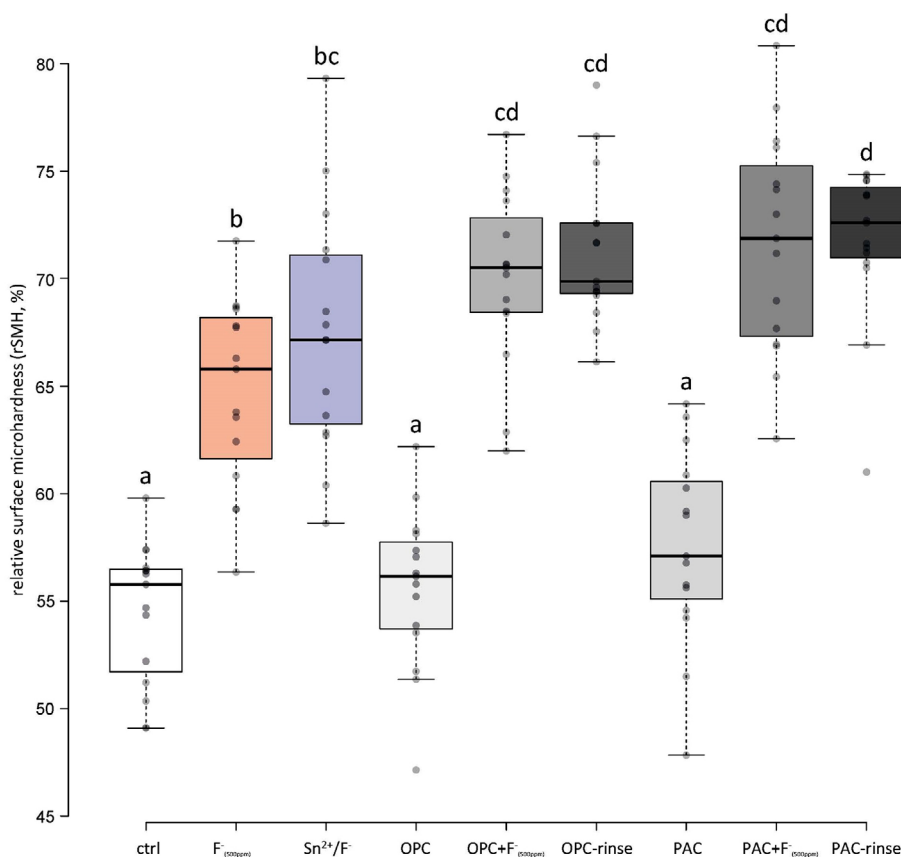


Figure 2- Relative surface microhardness (%) after all cycles. Different letters indicate significant differences ($p < 0.05$)

protection and even performed significantly better than fluoride alone. Further addition of peppermint oil and xylitol (OPC-rinse and PAC-rinse) did not influence the effectiveness of the treatment. However, regarding PAC it even seemed to improve it slightly since this group protected significantly better than the $\text{Sn}^{2+}/\text{F}^-$ group.

Reflection

The initial values of SRI of the polished specimens ranged from 27.1 to 43.0. The average initial SRI of the groups (median (IQR)) ranged from 34.6 (33.4-39.0) to 39.5 (36.0-40.3), without significant differences between the groups.

As an indirect measure of surface roughness, the SRI usually decreases during erosion as the roughness of the (polished) surface increases. Figures 3 and 4 show the final relative SRIs (rSRI, normalized to the initial values). Moreover, SRI was measured first with the pellicle still present (Figure 3) and after chemically removing the pellicle (Figure 4). With the presence of pellicle, unusually high values were observed for all groups containing the extracts, while the values of the other groups decreased to different degrees. The $\text{Sn}^{2+}/\text{F}^-$ group showed higher values than the control and $\text{F}^-_{(500\text{ppm})}$ groups, without differences between the

latter two, but still significantly lower values than the extract-containing groups (Figure 3). After removal of the pellicle, this changed considerably. The $\text{Sn}^{2+}/\text{F}^-$ group showed significantly higher rSRI than all the other groups and was the only one significantly better than the control group. The groups containing extract, on the other hand, did not show significantly higher rSRI values than the control or $\text{F}^-_{(500\text{ppm})}$ groups after pellicle removal (Figure 4).

Calcium

Figure 5 shows the cumulative amount of calcium released from the surfaces of the specimens over all cycles of the experiment. The control group released significantly more calcium than all the other groups. This is followed by the extract-only groups (OPC and PAC), which released significantly more calcium than the remaining groups. The Fluoride group ($\text{F}^-_{(500\text{ppm})}$) released significantly less calcium than the control and extract-only groups; however, it released more than the $\text{Sn}^{2+}/\text{F}^-$ group and the extracts-combined-with-fluoride groups (except for the OPC-rinse group). Between those groups and the $\text{Sn}^{2+}/\text{F}^-$ group, only little differences were found. Moreover, the PAC-rinse group was the only one with less calcium release than some

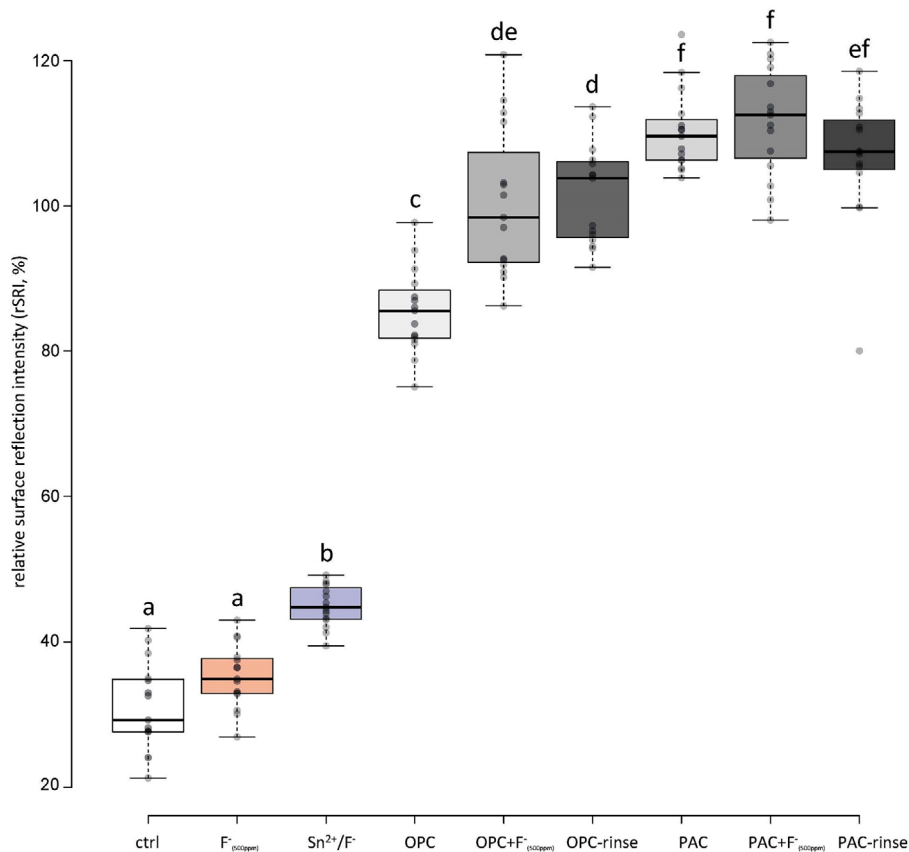


Figure 3- Relative surface reflection intensity (%) after all cycles, before pellicle removal. Different letters indicate significant differences ($p < 0.05$)

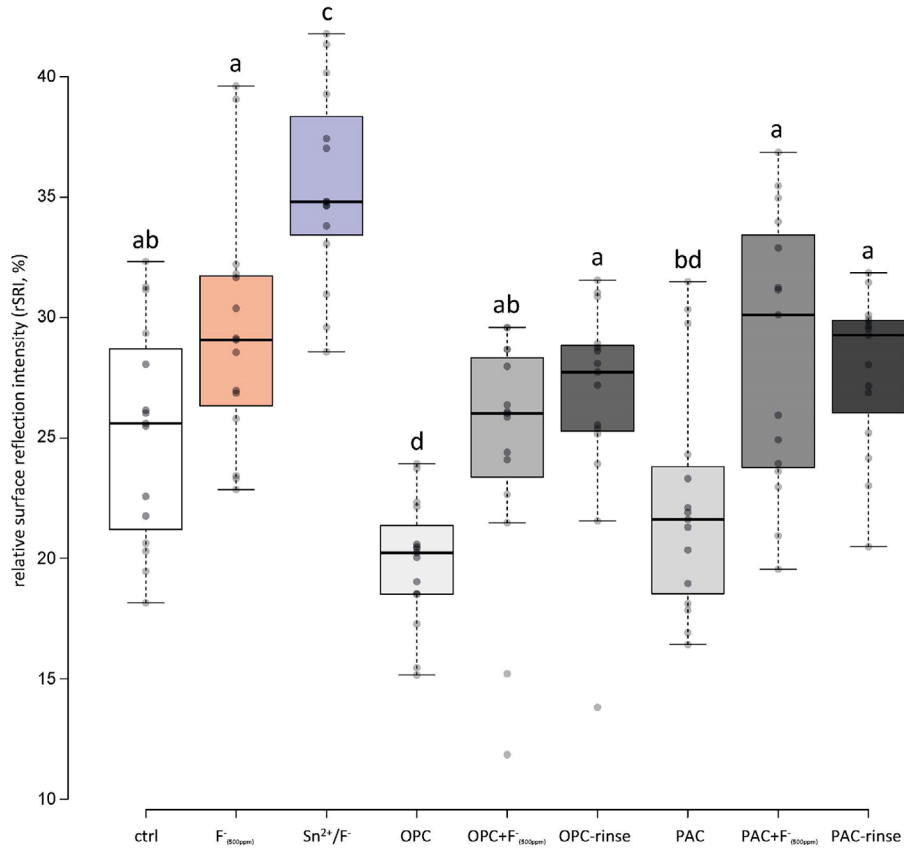


Figure 4- Relative surface reflection intensity (%) after all cycles, after pellicle removal. Different letters indicate significant differences ($p<0.05$)

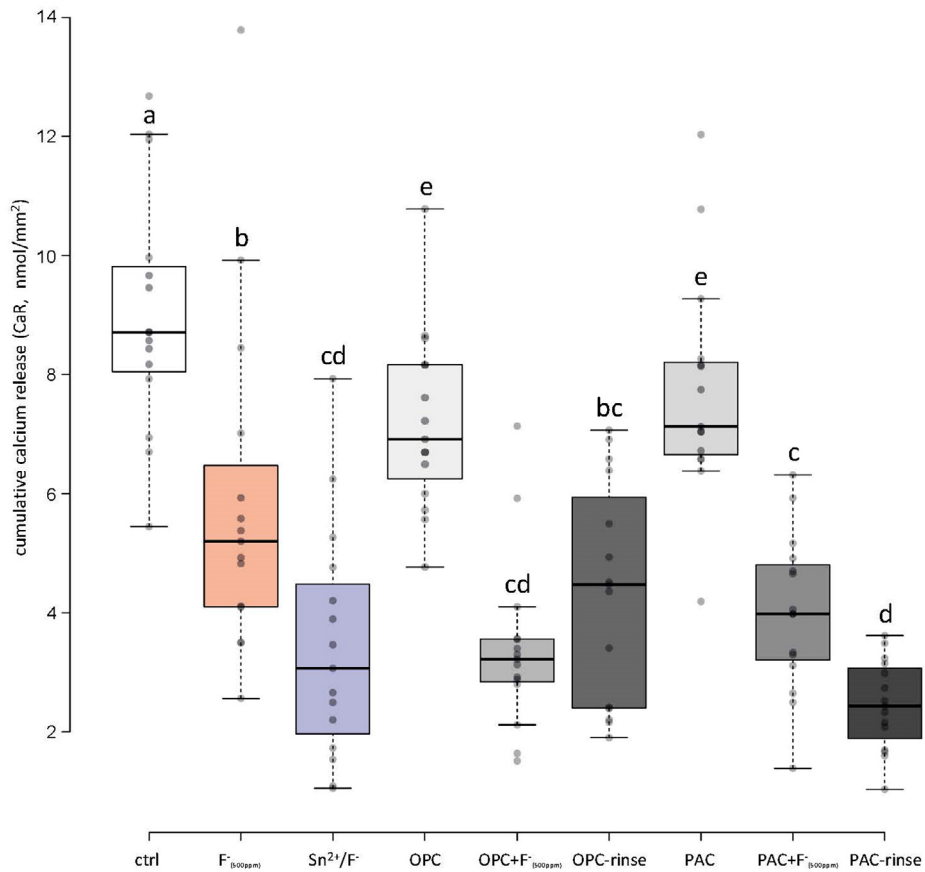


Figure 5- Total amount of calcium released to the citric acid. Different letters indicate significant differences ($p<0.05$)

of the extracts-combined-with-fluoride groups, but not different from $\text{Sn}^{2+}/\text{F}^{-}$.

Discussion

This study was inspired by the results of a previous study, which investigated the effect of different extracts on enamel erosion.¹¹ We included two incubations with saliva in each cycle, before and after treatment with the experimental solutions, as the hypothesized mode of action is a binding of the polyphenols to the proteins of the pellicle, followed by attraction of further proteins from saliva. This is supported by a recent study showing that a periodic treatment with polyphenols leads to thicker and denser pellicles.¹⁵ However, different adjustments to the protocol of the previous study were necessary since we aimed to create a rinsing solution. To test whether the extracts would still be effective after those adjustments, different pre-tests were carried out ([supplemental material](#)). The pre-tests showed that the erosion inhibition decreased with decreasing treatment time from 30 min to 30 s, while decreasing the concentration of the extract from 4 to 0.25 mg/ml did not seem to have a large effect at the original treatment time of 30 min ([supplemental materials](#)). Consequently, we chose an incubation time of 2 min for the present protocol, as this treatment time still led to an erosion protection and is also a commonly used incubation time for rinsing products in *in vitro* studies.¹⁶⁻¹⁸ Regarding concentration, we chose 2 mg/ml, which represents an increase compared to the original study. Although the pre-test had showed that lower concentrations are also effective, we still chose to raise it because the treatment time was decreased to 2 min and it would still not present any concerns regarding health and safety, since much higher amounts of polyphenols are consumed in food and as food supplements.¹⁹ We chose the pH of 5.8 since this is the native pH of the dissolved OPC, which has previously shown a good erosion-inhibiting effect¹¹ and should not cause any relevant erosion itself.

We prepared two rinsing solutions for this study. One was based on grape seed extract, containing mainly oligomeric proanthocyanidins (OPC). The other was based on cranberry extract, containing mainly general proanthocyanidins (PAC). The cranberry extract did not show good results in a previous study.¹¹ In that study, the native pH was left unchanged at around 3.2,

likely advancing the erosion process. Since cranberry extracts have shown promising results in other areas²⁰⁻²² and as in proanthocyanidins it contains mainly similar polyphenols as grape seed extracts, we hypothesized that if we adjusted the pH of the cranberry extract to 5.8, the same as the pH of the grape seed extract, we could have comparable protective results compared to grape seed extract. We verified this by a pre-test, which revealed that the cranberry extract might even protect slightly better than the grape seed extract ([supplemental materials](#)). The erosion inhibiting action of the polyphenols is likely based on their interaction with proteins of the pellicle, especially from the basal layer of the pellicle.²³ This could, in turn, attract more proteins to the pellicle, leading to changes in its structure and protective properties.^{24,25}

Although fluoride alone shows some effect, its success in erosion inhibition is limited.²⁶ However, fluoride is important for caries prevention. The main sought-after function of the rinses created in this study was erosion prevention; however, we included fluoride in the rinses for its possible additional erosion inhibiting effect and considered the essential prevention of caries. The results show that fluoride alone provides some erosion protection with the *in vitro* protocol that we used, as it led to a higher rSMH and less calcium release than the control. Only the rSRI did not differ from the control group, regardless if measured with the pellicle still present or after pellicle removal. Combining the extracts with fluoride led to even significantly better protection, with higher rSMH and less calcium release than fluoride alone, suggesting a synergistic effect. This was also demonstrated in a recent study inspired by this finding.²⁷

Peppermint oil and xylitol were added to the rinses to improve the taste. They were not thought to influence erosion inhibition, which was generally confirmed by our results. Neither the rSMH nor rSRI showed any differences between the groups containing extracts and fluoride ($\text{OPC}+\text{F}^{-}_{(500\text{ppm})}$ and $\text{PAC}+\text{F}^{-}_{(500\text{ppm})}$) and the groups containing additionally oil and xylitol (OPC-rinse and PAC-rinse; Figures 1 and 3). Only the calcium release showed an additional reduction for the PAC with those additives. Lipids are also part of the pellicle,^{28,29} and its lipid profile can be modified.³⁰ Since the lipid content of our rinsing solutions is low, a modification of the lipid profile was not expected but we cannot exclude it. Polyphenols also interact with lipids.³¹ Therefore, PAC might also influence the lipid

profile of the pellicle, which might have a positive effect on erosion protection; however, we did not further investigate this.

The two rinsing solutions prepared were compared to the current gold standard of erosion protective rinsing solutions, a commercially available Sn²⁺/F⁻ containing solution.¹⁷ The results show that, under the rather mild conditions used, the OPC-rinse and the PAC-rinse performed comparable to the Sn²⁺/F⁻ solution. Regarding rSMH, all three rinses showed a significant erosion inhibition compared to the control, with little differences between themselves. The OPC-rinse and PAC-rinse performed better than the fluoride (F⁻_(500ppm)) group, while the PAC-rinse even exhibited a significantly higher final rSMH than the Sn²⁺/F⁻ group (Figure 2). The calcium release results were similar. All three rinses significantly reduced the amount of calcium released compared to the control, without differences between themselves (Figure 5). Only in rSRI, the Sn²⁺/F⁻ group seemed to perform better, as after pellicle removal it exhibited higher values than the experimental rinses (Figure 4). The rSRI is an indirect measure of the surface roughness, with smoother surfaces leading to higher reflection values. After a certain degree of erosion the surface roughness, as measured via the rSRI, does not change a lot anymore.¹⁴ On the other hand, calcium release from near-surface layers might still vary considerably,³² as well as the resulting change in hardness. If the surface is not directly modified by a treatment, then there are no differences observable in the rSRI at this stage. This is the case for the polyphenol groups since the polyphenols do not bind to and act directly on the surface, but instead they interact with the proteins of the pellicle,^{11,12} leading to thicker and denser pellicles.¹⁵ The Sn²⁺/F⁻ group, on the other hand, contains stannous ions as the main active ingredient. Those ions are incorporated into the top layer of eroded enamel,³³ which could lead to differences in the smoothness and, thus, the reflection of the surface. The better performance of the Sn²⁺/F⁻ group observed in rSRI might therefore be due to the combination of differences in the mode of action and the measurement technique rather than a real increased protection compared to the other rinses. A disadvantage that increases the difficulty in interpreting the results from the SRI measurements is that the pellicle removal with the protocol used might be incomplete. A validated protocol for complete pellicle removal requires 30 min of incubation in

NaOCl, together with sonication.³⁴ However, sonication damages the eroded enamel,³⁵ thus we chose not to follow this protocol. Although pellicle remnants might be left on the surface, we clearly observed differences between before (Figure 3) and after (Figure 4) pellicle removal.

Polyphenols are sensitive to light,³⁶ which could be a problem for the stability and the shelf-life of a rinsing solution. Therefore, we carried out an additional pre-test for the shelf-life of OPC+F⁻_(500ppm) and the OPC-rinse, storing them for five months at room temperature in the dark. After this storage period the erosion preventive effect of the solutions was still maintained ([supplemental materials](#)).

Up to now, we observed promising results for our experimental solutions. However, they were so far tested only under *in vitro* conditions, so a next step will be to test these rinsing solutions in a clinical setting. This is especially important because the mechanism of action of polyphenols is based on interactions with proteins from the salivary pellicle and there are differences between *in vitro* and *in situ* or *in vivo* pellicles.³⁷ Considering the high affinity of the OPC and PAC to the salivary proteins, we believe that the polyphenol rinses will also be effective in these situations. A further step is to test the solutions in a harsher erosion model to verify how it performs under more severe challenges. Furthermore, a protocol including abrasion should be tested to investigate how the rinses perform under ETW conditions rather than solely demineralizing conditions. A concern that polyphenols share with stannous-based products is that they might cause tooth staining.³⁸ However, it was recently demonstrated that polyphenol-based staining is reversible.³⁹ To find alternatives to stannous-based products, which are so far the gold standard despite some disadvantages, other efforts to create erosion protective rinses are based on polymers.⁴⁰ Although some of these polymers are also essentially natural products, an advantage of the present OPC and PAC rinses is that they are easily recognized as based on natural plant-based products. This might improve acceptance and compliance of some patients to use these rinses.

Conclusion

Considering our results, we created a natural erosion preventive rinsing solution containing OPC or PAC. Under the *in vitro* conditions tested in this study, these rinsing solutions perform as well as or even better than the current gold standard for prevention of initial erosive demineralization. This offers alternatives in erosion prevention, as the mechanism of action of the polyphenol-based products is different, exploiting the natural interaction of polyphenols with salivary proteins, thus modifying and strengthening the pellicle.

Acknowledgments

The authors thank Samuel Furrer and Barbara Beyeler, from the Department of Restorative, Preventive and Pediatric Dentistry (University of Bern), for their technical assistance and work in the laboratory. Open access funding was provided by the University of Bern and swissuniversities.

Conflict of interest

The authors declare no conflict of interest.

Data availability statement

The datasets generated during and/or analyzed during this study are available in the SciELO Data repository - <https://doi.org/10.48331/scielodata.ZTZ1PM>.

Authors' contributions

Baumann, Tommy: Conceptualization (Equal); Data curation (Lead); Formal analysis (Lead); Methodology (Equal); Supervision (Lead); Writing – original draft (Lead). **Niemeyer, Samira Helena:** Formal analysis (Supporting); Writing – review & editing (Equal). **Lussi, Adrian:** Writing – review & editing (Supporting). **Scaramucci, Tais:** Writing – review & editing (Equal). **Carvalho, Thiago Saads:** Conceptualization (Equal); Methodology (Equal); Supervision (Supporting); Writing – review & editing (Equal).

References

1- Schlueter N, Luka B. Erosive tooth wear - a review on global prevalence and on its prevalence in risk groups. *Br Dent J*. 2018;224(5):364-70. doi: 10.1038/sj.bdj.2018.167

2- Hara AT, Carvalho JC, Zero DT. Causes of dental erosion: extrinsic factors. In: Amaechi BT, editor. *Dental erosion and its clinical management*. Cham: Springer International Publishing; 2015. p. 69-96.

3- Scaramucci T, Carvalho JC, Hara AT, Zero DT. Causes of dental erosion: intrinsic factors. In: Amaechi BT, editor. *Dental erosion and its clinical management*. Cham: Springer International Publishing; 2015. p. 35-67.

4- Li H, Zou Y, Ding G. Dietary factors associated with dental erosion: a meta-analysis. *PLoS One*. 2012;7(8):e42626. doi: 10.1371/journal.pone.0042626

5- Hannig M, Hannig C. The pellicle and erosion. *Monogr Oral Sci*. 2014;25:206-14. doi: 10.1159/000360376

6- Hara AT, Ando M, Gonzalez-Cabezas C, Cury JA, Serra MC, Zero DT. Protective effect of the dental pellicle against erosive challenges *in situ*. *J Dent Res*. 2006;85(7):612-6. doi: 10.1177/154405910608500706.

7- Barbour ME, Shellis RP, Parker DM, Allen GC, Addy M. Inhibition of hydroxyapatite dissolution by whole casein: the effects of pH, protein concentration, calcium, and ionic strength. *Eur J Oral Sci*. 2008;116(5):473-8. doi: 10.1111/j.1600-0722.2008.00565.x

8- Weber MT, Hannig M, Pötschke S, Höhne F, Hannig C. Application of plant extracts for the prevention of dental erosion: an *in situ/in vitro* study. *Caries Res*. 2015;49(5):477-87. doi: 10.1159/000431294

9- Sieber KR, Schmidt C, Baumann T, Lussi A, Carvalho TS. Acquired enamel pellicle modification with casein and mucin in different concentrations and its impact on initial dental erosion. *Caries Res*. 2019;53(4):457-66. doi: 10.1159/000499579

10- Pelá VT, Lunardelli JG, Tokuhara CK, Gironde CC, Silva ND, Carvalho TS, et al. Safety and *in situ* antierosive effect of canecpi-5 on dental enamel. *J Dent Res*. 2021;220345211011590. doi: 10.1177/00220345211011590

11- Niemeyer SH, Baumann T, Lussi A, Meyer-Lueckel H, Scaramucci T, Carvalho TS. Salivary pellicle modification with polyphenol-rich teas and natural extracts to improve protection against dental erosion. *J Dent*. 2021;105:103567. doi: 10.1016/j.jdent.2020.103567

12- Flemming J, Meyer-Probst CT, Speer K, Kolling-Speer I, Hannig C, Hannig M. Preventive applications of polyphenols in dentistry-a review. *Int J Mol Sci*. 2021;22(9). doi: 10.3390/ijms22094892

13- Pandey KB, Rizvi SI. Plant polyphenols as dietary antioxidants in human health and disease. *Oxid Med Cell Longev*. 2009;2(5):270-8. doi: 10.4161/oxim.2.5.9498

14- Rakhmatullina E, Bossen A, Hoschele C, Wang X, Beyeler B, Meier C, et al. Application of the specular and diffuse reflection analysis for *in vitro* diagnostics of dental erosion: correlation with enamel softening, roughness, and calcium release. *J Biomed Opt*. 2011;16(10):107002. doi: 10.1117/1.3631791

15- Schestakow A, Nekrashevych Y, Hoth-Hannig W, Hannig M. Influence of periodic polyphenol treatment on the anti-erosive potential of the acquired enamel pellicle: a qualitative exploratory study. *J Dent*. 2022;124:104236. doi: 10.1016/j.jdent.2022.104236

16- Moser C, Baumann T, Lussi A, Carvalho TS. Is the erosion-protective effect still maintained when tin concentrations are reduced in mouth rinse solutions? *Caries Res*. 2021;55(2):108-13. doi: 10.1159/000513059

17- Carvalho TS, Lussi A. Combined effect of a fluoride-, stannous- and chitosan-containing toothpaste and stannous-containing rinse on the prevention of initial enamel erosion-abrasion. *J Dent*. 2014;42(4):450-9. doi: 10.1016/j.jdent.2014.01.004

18- M'Barek Z, Zouari Y, Moalla N, Zaier E, Ghoul-Mazgar S. Souakine mouth rinse solution protects deciduous enamel from simulated erosion *in vitro*. *Eur J Paediatr Dent*. 2014;15(4):407-11.

19- Neveu V, Perez-Jimenez J, Vos F, Crespy V, du Chaffaut L, Mennen L, et al. Phenol-explorer: an online comprehensive database on polyphenol contents in foods. *Database (Oxford)*. 2010;2010:bap024. doi: 10.1093/database/bap024

- 20- Philip N, Walsh LJ. Cranberry polyphenols: natural weapons against dental caries. *Dent J (Basel)*. 2019;7(1):20. doi: 10.3390/dj7010020
- 21- Bodet C, Grenier D, Chandad F, Ofek I, Steinberg D, Weiss EI. Potential oral health benefits of cranberry. *Crit Rev Food Sci Nutr*. 2008;48(7):672-80. doi: 10.1080/10408390701636211
- 22- Mukherjee M, Bandyopadhyay P, Kundu D. Exploring the role of cranberry polyphenols in periodontitis: a brief review. *J Indian Soc Periodontol*. 2014;18(2):136-9. doi: 10.4103/0972-124X.131301
- 23- Soares S, Vitorino R, Osorio H, Fernandes A, Venancio A, Mateus N, et al. Reactivity of human salivary proteins families toward food polyphenols. *J Agric Food Chem*. 2011;59(10):5535-7. doi: 10.1021/jf104975d
- 24- Rehage M, Delius J, Hofmann T, Hannig M. Oral astringent stimuli alter the enamel pellicle's ultrastructure as revealed by electron microscopy. *J Dent*. 2017;63:21-9. doi: 10.1016/j.jdent.2017.05.011
- 25- Zimmermann R, Delius J, Friedrichs J, Stehl S, Hofmann T, Hannig C, et al. Impact of oral astringent stimuli on surface charge and morphology of the protein-rich pellicle at the tooth-saliva interphase. *Colloids Surf B Biointerfaces*. 2019;174:451-8. doi: 10.1016/j.colsurfb.2018.11.028
- 26- Lussi A, Buzalaf MA, Duangthip D, Anttonen V, Ganss C, Joao-Souza SH, et al. The use of fluoride for the prevention of dental erosion and erosive tooth wear in children and adolescents. *Eur Arch Paediatr Dent*. 2019;20(6):517-27. doi: 10.1007/s40368-019-00420-0
- 27- Carvalho TS, Pham K, Rios D, Niemeyer S, Baumann T. Synergistic effect between plant extracts and fluoride to protect against enamel erosion: an *in vitro* study. *PLoS One*. 2022;17(11):e0277552. doi: 10.1371/journal.pone.0277552
- 28- Reich M, Kummerer K, Al-Ahmad A, Hannig C. Fatty acid profile of the initial oral biofilm (pellicle): an *in-situ* study. *Lipids*. 2013;48(9):929-37. doi: 10.1007/s11745-013-3822-2
- 29- Reich M, Hannig C, Hannig M, Kummerer K, Kensche A. The lipid composition of the *in situ* pellicle. *Arch Oral Biol*. 2022;142:105493. doi: 10.1016/j.archoralbio.2022.105493
- 30- Kensche A, Reich M, Hannig C, Kummerer K, Hannig M. Modification of the lipid profile of the initial oral biofilm *in situ* using linseed oil as mouthwash. *Nutrients*. 2021;13(3):989. doi: 10.3390/nu13030989
- 31- Jakobek L. Interactions of polyphenols with carbohydrates, lipids and proteins. *Food Chem*. 2015;175:556-67. doi: 10.1016/j.foodchem.2014.12.013
- 32- Shellis RP, Featherstone JD, Lussi A. Understanding the chemistry of dental erosion. *Monogr Oral Sci*. 2014;25:163-79. doi: 10.1159/000359943
- 33- Schlueter N, Hardt M, Lussi A, Engelmann F, Klimek J, Ganss C. Tin-containing fluoride solutions as anti-erosive agents in enamel: an *in vitro* tin-uptake, tissue-loss, and scanning electron micrograph study. *Eur J Oral Sci*. 2009;117(4):427-34. doi: 10.1111/j.1600-0722.2009.00647.x
- 34- Hannig M, Khanafer AK, Hoth-Hannig W, Al-Marrawi F, Acil Y. Transmission electron microscopy comparison of methods for collecting *in situ* formed enamel pellicle. *Clin Oral Investig*. 2005;9(1):30-7. doi: 10.1007/s00784-004-0284-1
- 35- Eisenburger M, Hughes J, West NX, Jandt KD, Addy M. Ultrasonication as a method to study enamel demineralisation during acid erosion. *Caries Res*. 2000;34(4):289-94. doi: 16604
- 36- Ioannou I, Hafsa I, Hamdi S, Charbonnel C, Ghoul M. Review of the effects of food processing and formulation on flavonol and anthocyanin behaviour. *J Food Engineering*. 2012;111(2):208-17. doi: 10.1016/j.jfoodeng.2012.02.006
- 37- Pelá VT, Lunardelli JGQ, Ventura TMO, Camiloti GD, Baumann T, Carvalho TS, et al. Proteomic profiles of the acquired enamel pellicle formed *in vitro*, *in situ*, or *in vivo*. *Eur J Oral Sci*. 2020;128(6):487-94. doi: 10.1111/eos.12744
- 38- Joiner A, Muller D, Elofsson UM, Arnebrant T. Ellipsometry analysis of the *in vitro* adsorption of tea polyphenols onto salivary pellicles. *Eur J Oral Sci*. 2004;112(6):510-5. doi: 10.1111/j.1600-0722.2004.00166.x
- 39- Mailart MC, Berli PC, Borges AB, Yilmaz B, Baumann T, Carvalho TS. Pellicle modification with natural bioproducts: influence on tooth color under erosive conditions. *Eur J Oral Sci*. 2022;130(5):e12886. doi: 10.1111/eos.12886
- 40- Augusto MG, Scaramucci T, Campos TM, Aoki IV, Schlueter N, Borges AB. Film-forming polymers for tooth erosion prevention. *Polymers (Basel)*. 2022;14(19):4225. doi: 10.3390/polym14194225