

COFFEE



LECTURE

u^b

b
UNIVERSITÄT
BERN

Data Stewards: Domain-specific research data management support at UniBe



Dr. Martin Wegmann
Open Science

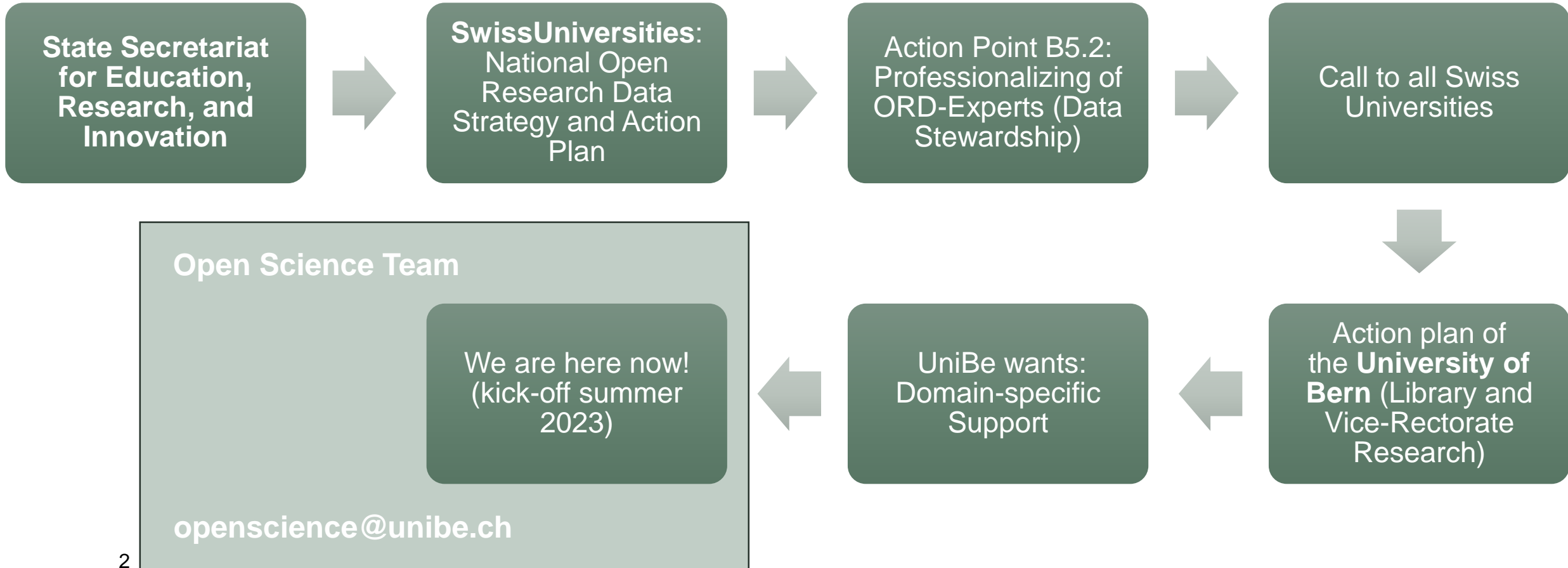


Dr. Olga Churakova
Open Science

Thursday
19 October 2023
13:00 CEST, Zoom

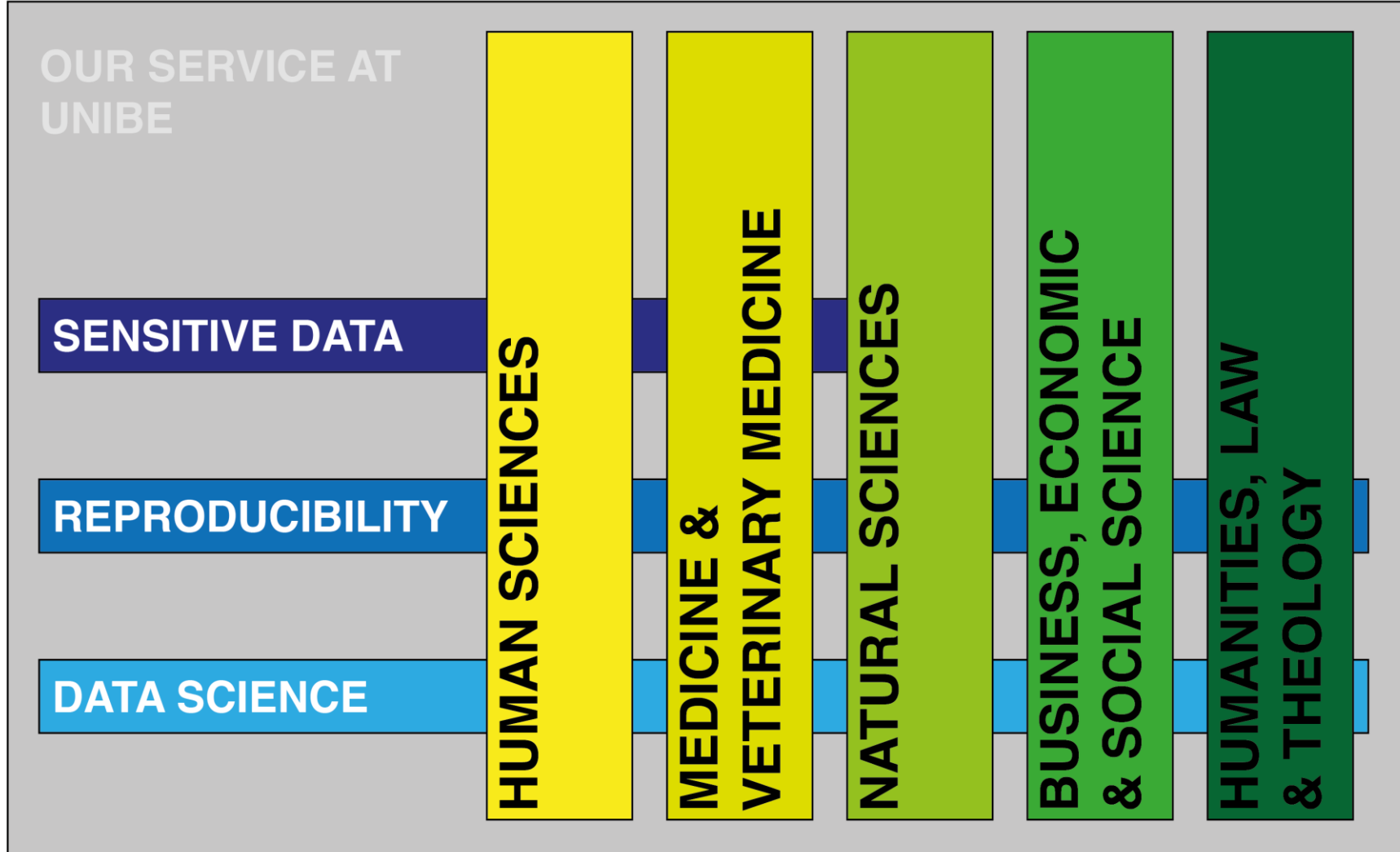


The New Data Steward Service Context



u^b

The New Data Steward Service Execution at UniBe



u^b

The New Data Steward Service

Who are we?



u^b

The New Data Steward Service

Who are we?



**MEDICINE &
VETERINARY MEDICINE**



**NATURAL
SCIENCES**

u^b

The New Data Steward Service

Who are we?



**HUMAN
SCIENCES**



**MEDICINE &
VETERINARY MEDICINE**



**NATURAL
SCIENCES**



**DATA
SCIENCE**



**BUSINESS,
ECONOMICS &
SOCIAL SCIENCE**



**HUMANITIES,
LAW &
THEOLOGY**



**HUMANITIES,
LAW &
THEOLOGY**

u^b The New Data Steward Service

What is our mandate?

What do we do?

- Our service is for all researchers of the University of Bern (incl. Insel).
- We advice, help and educate in **research data management**.
- With the new data steward concept, we can do this now closer to **your** research than ever.
- We connect you to other services and infrastructure.

u^b The New Data Steward Service

What is our mandate?

What do we do?

- Our service is for all researchers of the University of Bern (incl. Insel).
- We advice, help and educate in **research data management**.
- With the new data steward concept, we can do this now closer to **your** research than ever.
- We connect you to other services and infrastructure.

What do we not do?

- We do not a police, enforce or punish.
- We are agnostic with respect to the scientific quality of your data.
- We do not code or buy software/hardware for you.
- We do not write a research data management plan for you.

u^b

The New Data Steward Service

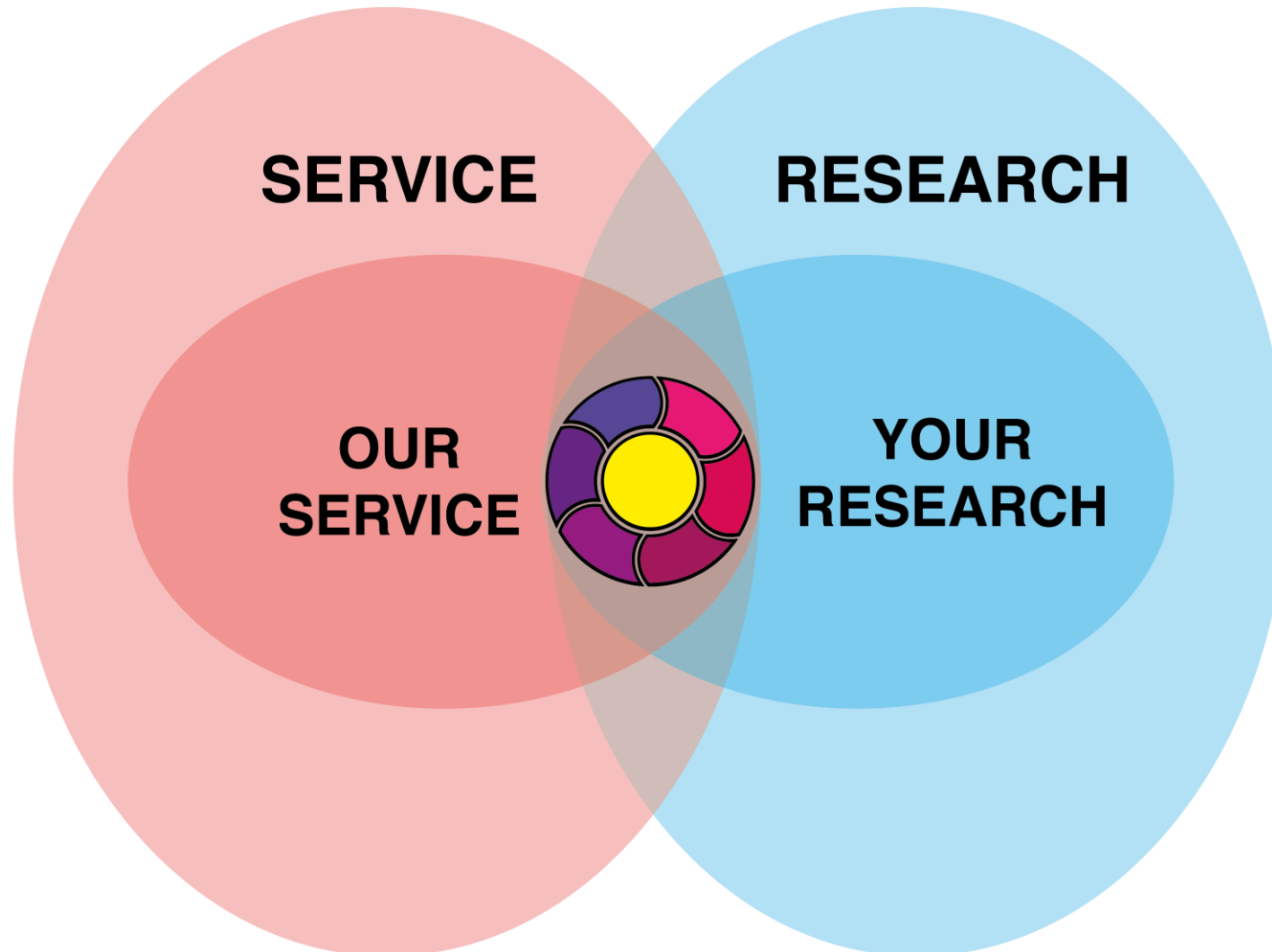
What is our mandate?



u^b

The New Data Steward Service

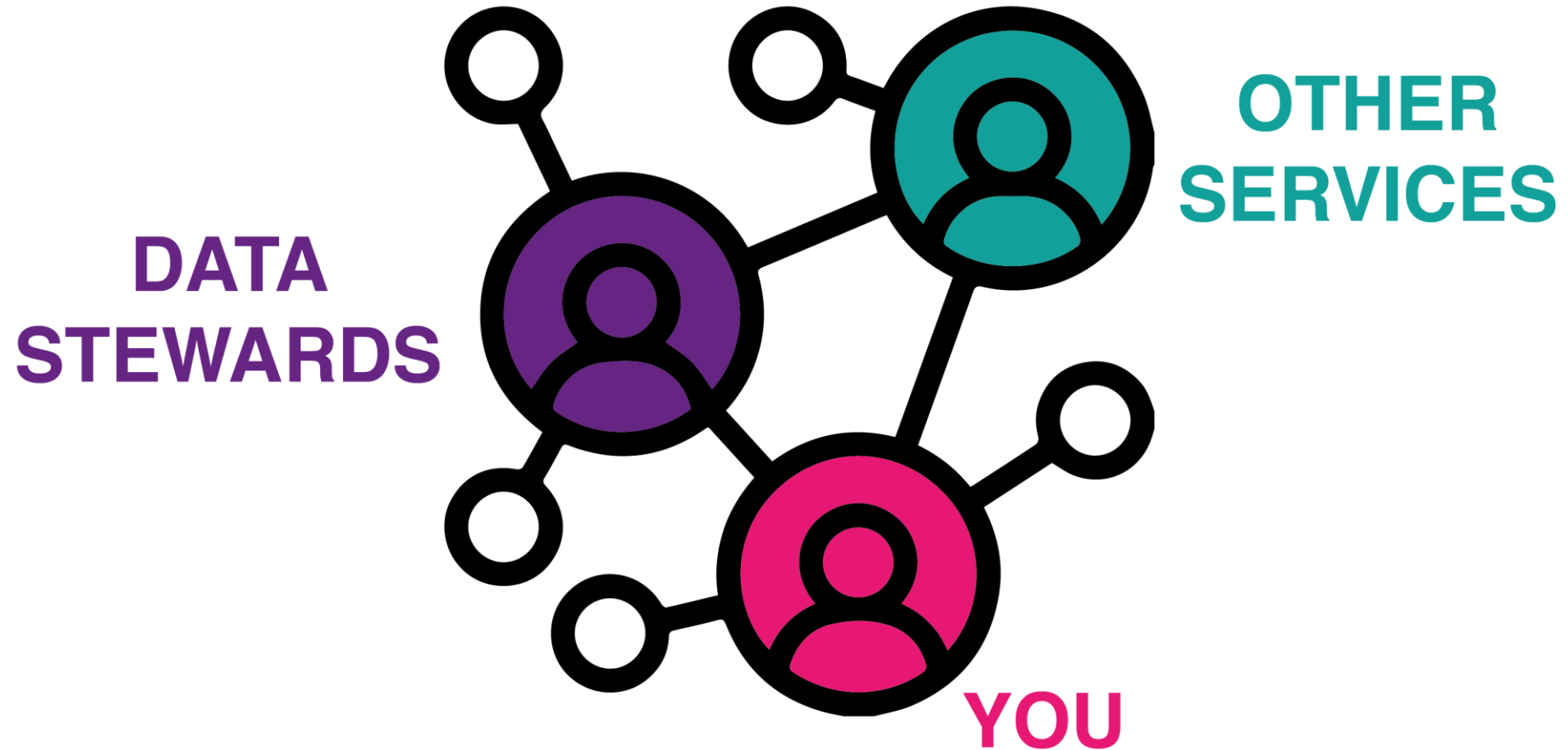
Where is a Data Steward?



u^b

The New Data Steward Service

Where is a Data Steward?



u^b

The New Data Steward Service

Why us?



HUMAN
SCIENCES



MEDICINE &
VETERINARY MEDICINE



NATURAL
SCIENCES



DATA
SCIENCE



BUSINESS,
ECONOMICS &
SOCIAL SCIENCE



HUMANITIES,
LAW &
THEOLOGY



HUMANITIES,
LAW &
THEOLOGY

We have a scientific background!

We measured samples and analysed data, published it, have experience and expertise in writing and reviewing research proposals, incl. DMPs.

We have seen stuff!

We have a lot of experience in our team across many subjects and countries.

We have connections!

Local, national and international.

u^b

The New Data Steward Service

Example requests

"I have to submit a data management plan to my funding agency, can you help me to check its quality and format?"

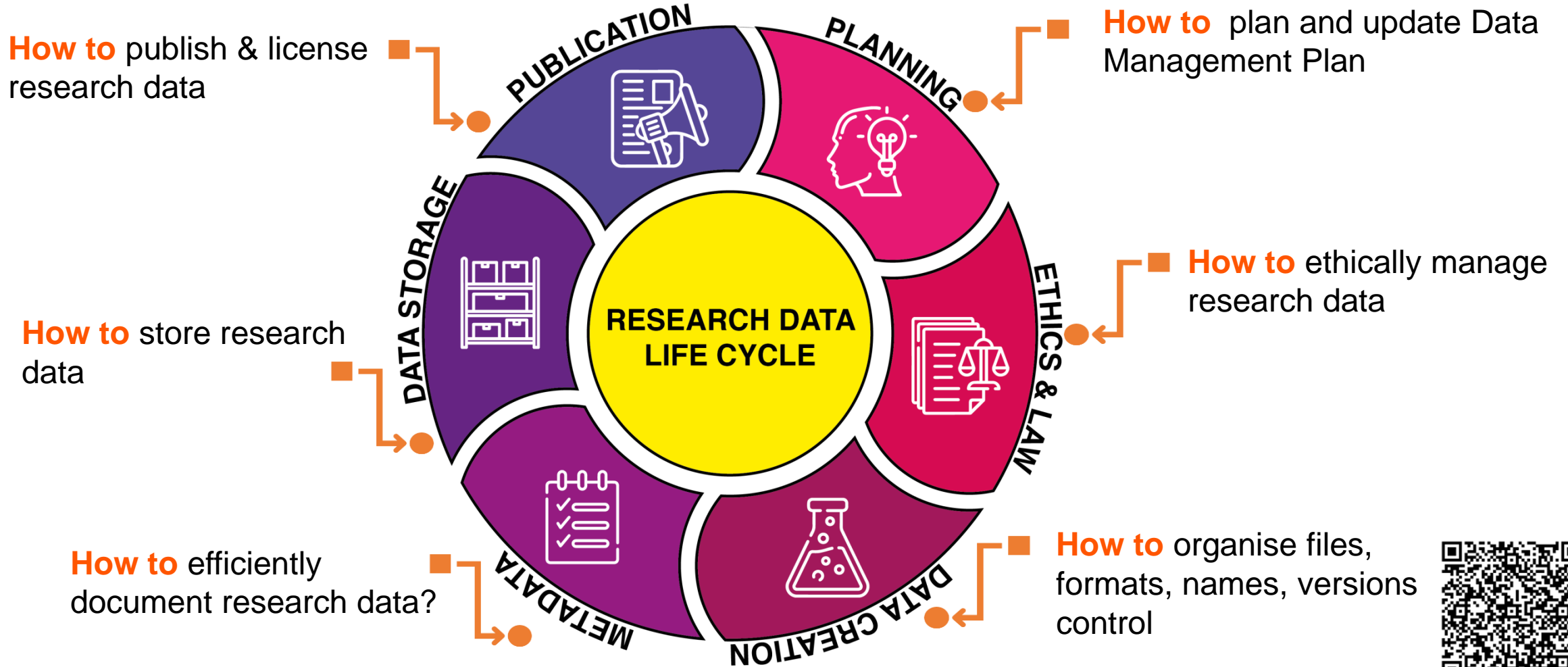
"I need to publish my genomics data FAIRly, what are my best options?"

"I want to use the UniBe data repository BORIS Portal for data publishing, but I have ten 1.5 GB files. Can I still use it?"

"We need to develop a research data management guideline for our group / Institute, what should we consider?"

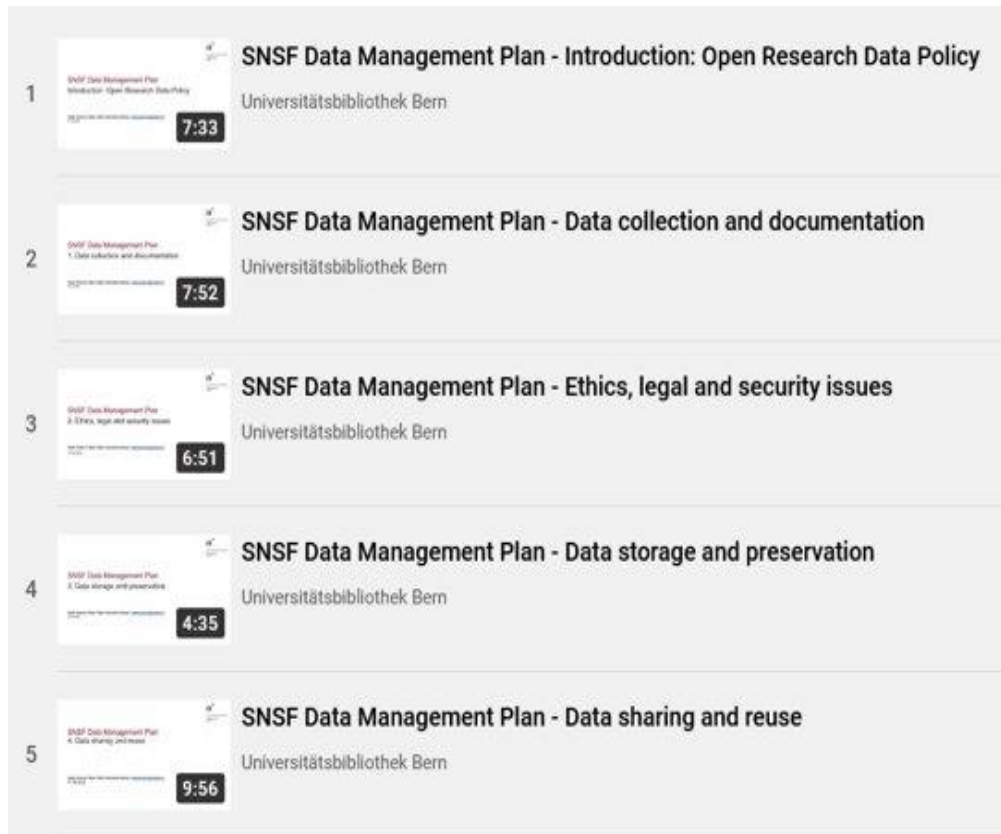
"How does a best-practice readme and metadata file look like?"

The New Data Steward Service Training Support



The New Data Steward Service

Data Management Plan Review



1 SNSF Data Management Plan - Introduction: Open Research Data Policy
Universitätsbibliothek Bern 7:33

2 SNSF Data Management Plan - Data collection and documentation
Universitätsbibliothek Bern 7:52

3 SNSF Data Management Plan - Ethics, legal and security issues
Universitätsbibliothek Bern 6:51

4 SNSF Data Management Plan - Data storage and preservation
Universitätsbibliothek Bern 4:35

5 SNSF Data Management Plan - Data sharing and reuse
Universitätsbibliothek Bern 9:56

Video modules [YouTube](#)

University Library of Bern UB

UB Research Services Faculty libraries About us

< Research Data Management

Data Management Plan Review

Here you can upload your data management plan for review by the RDM team prior to submission to the research funding agency. If you are writing a DMP for the Swiss National Science Foundation SNSF, we recommend you to watch our short introduction in five short videos [on YouTube](#).

Alternatively you can send us your DMP by [mail](#).

Name *

First name *

Email address *

Funder submission deadline
TT . MM . JJJJ

Upload
 Keine Datei ausgewählt.

Ideally, you should upload the document in Word format.

Comment

Data Management Plan review [online](#)
Feedback within 1-3 working days

The New Data Steward Service Training Support

21 NOVEMBER
17:15 - 18:00 UHR

EVENT
OPEN SCIENCE

**Bern Data Talks - Preparing
Data for Publication**

- [Prof. Dr. Tobias Hodel](#)
University of Bern, Digital Humanities
- [Prof. Dr. Stefan Brönnimann](#)
University of Bern, Institute of Geography
- [Thilo Hirsch](#)
Bern University of Applied Sciences, Bern
University of the Arts



u^b

The New Data Steward Service Newsletter

- Funder's news
- Training sessions and courses
- Developments in Open Access and Research Data



u^b

The New Data Steward Service Feedback

We would like to learn about your wishes and needs in order to optimize our training and consulting services.
Thank you for participating in this short and anonymous survey!

t1p.de/RDMsurvey



Contact

Dr. Martin Wegmann

E-Mail: martin.wegmann2@unibe.ch

Research Data Management Support
Domain: Natural Sciences

Dr. Olga Churakova

E-Mail: olga.churakova@unibe.ch

Research Data Management Support
Domain: Medicine, Vetsuisse, Insel

Thanks



**for your
attendance**

u^b

b
**UNIVERSITÄT
BERN**

Next Coffee Lectures:



Research Support Services
Science and Medical Libraries
University Library Bern
frnat.ub@unibe.ch
support_med.ub@unibe.ch

Thanks



**for your
attendance**

u^b

b
**UNIVERSITÄT
BERN**

Slides and Screencast:

Science Library



Medical Library



**Research Support Services
Science and Medical Libraries
University Library Bern**
frnat.ub@unibe.ch
support_med.ub@unibe.ch

Thanks



**for your
attendance**

u^b

b
**UNIVERSITÄT
BERN**

Now there is time for...

**Questions &
Discussion**

Research Support Services
Science and Medical Libraries
University Library Bern
frnat.ub@unibe.ch
support_med.ub@unibe.ch