

AUTHOR CORRECTION OPEN



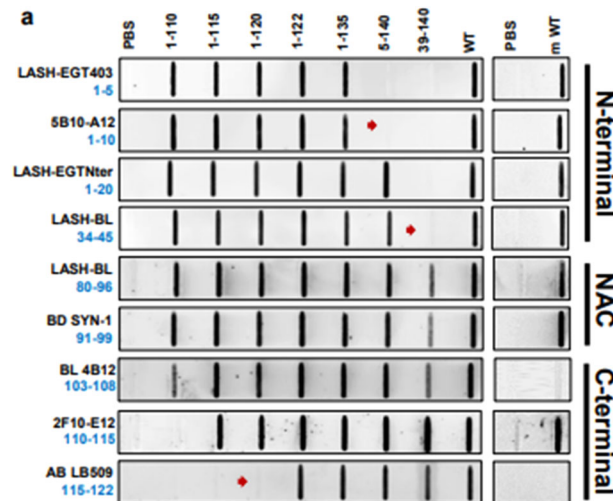
Author Correction: Development and validation of an expanded antibody toolset that captures alpha-synuclein pathological diversity in Lewy body diseases

Melek Firat Altay , Senthil T. Kumar , Johannes Bartscher , Somanath Jagannath, Catherine Strand, Yasuo Miki, Laura Parkkinen , Janice L. Holton and Hilal A. Lashuel

npj Parkinson's Disease (2024)10:19; <https://doi.org/10.1038/s41531-024-00634-0>

Correction to: *npj Parkinson's Disease* <https://doi.org/10.1038/s41531-023-00604-y>, published online 07 December 2023

In this article, the wrong slot blots of LASH-BL34-45 and BL 4B12 were presented in Figure 2a; the figure should have appeared as shown below. The original article has been corrected.



Open Access This article is licensed under a Creative Commons Attribution 4.0 International License, which permits use, sharing, adaptation, distribution and reproduction in any medium or format, as long as you give appropriate credit to the original author(s) and the source, provide a link to the Creative Commons license, and indicate if changes were made. The images or other third party material in this article are included in the article's Creative Commons license, unless indicated otherwise in a credit line to the material. If material is not included in the

article's Creative Commons license and your intended use is not permitted by statutory regulation or exceeds the permitted use, you will need to obtain permission directly from the copyright holder. To view a copy of this license, visit <http://creativecommons.org/licenses/by/4.0/>.

© The Author(s) 2024