

LETTER • OPEN ACCESS

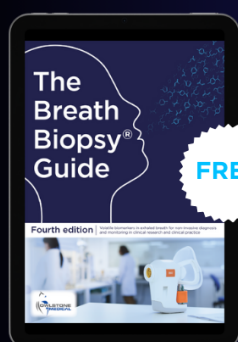
Climate policies for carbon neutrality should not rely on the uncertain increase of carbon stocks in existing forests

To cite this article: Caspar TJ Roebroek *et al* 2024 *Environ. Res. Lett.* **19** 044050

View the [article online](#) for updates and enhancements.

You may also like

- [Optimal Quantum Control of Charging Quantum Batteries](#)
Ricard Ravell Rodríguez, Borhan Ahmadi, Gerardo Suarez et al.
- [Selective phase transition of cholesteric blue phase I induced by pattern-controlled Grandjean-Cano disclinations](#)
Kazuma Nakajima, Shogo Mitsuhashi and Masanori OZAKI
- [Triarylborane-based thermally activated delayed fluorescence materials with an efficient reverse intersystem crossing](#)
Ryosuke Okumura, Yu Kusakabe, Florian Rauch et al.



FREE

The Breath Biopsy[®] Guide

Fourth edition

DOWNLOAD THE FREE E-BOOK

BREATH
BIOPSY



ENVIRONMENTAL RESEARCH
LETTERS

LETTER

Climate policies for carbon neutrality should not rely on the uncertain increase of carbon stocks in existing forests

OPEN ACCESS

RECEIVED

7 November 2023

REVISED

12 March 2024

ACCEPTED FOR PUBLICATION

18 March 2024

PUBLISHED

28 March 2024

Original content from this work may be used under the terms of the [Creative Commons Attribution 4.0 licence](#).

Any further distribution of this work must maintain attribution to the author(s) and the title of the work, journal citation and DOI.



Caspar TJ Roebroek^{1,2,*} , Luca Caporaso^{1,3} , Ramdane Alkama¹ , Gregory Duveiller⁴ , Edouard L Davin^{5,6,7} , Sonia I Seneviratne²  and Alessandro Cescatti¹ 

¹ European Commission, Joint Research Centre (JRC), Ispra, Italy

² Institute for Atmospheric and Climate Science, Eidgenössische Technische Hochschule (ETH) Zurich, Zurich, Switzerland

³ National Research Council of Italy, Institute of BioEconomy, Rome, Italy

⁴ Max Planck Institute for Biogeochemistry, Jena, Germany

⁵ Wyss Academy for Nature, University of Bern, Bern, Switzerland

⁶ Climate and Environmental Physics, Physics Institute, University of Bern, Bern, Switzerland

⁷ Oeschger Centre for Climate Change Research, University of Bern, Bern, Switzerland

* Author to whom any correspondence should be addressed.

E-mail: caspar.roebroek@env.ethz.ch

Keywords: climate change, nature-based solutions, carbon storage, carbon cycle, climate change mitigation

Supplementary material for this article is available [online](#)

Abstract

The international community, through treaties such as the Paris agreement, aims to limit climate change to well below 2 °C, which implies reaching carbon neutrality around the second half of the century. In the current calculations underpinning the various roadmaps toward carbon neutrality, a major component is a steady or even expanding terrestrial carbon sink, supported by an increase of global forest biomass. However, recent research has challenged this view. Here we developed a framework that assesses the potential global equilibrium of forest biomass under different climate change scenarios. Results show that under global warming carbon storage potential in forest aboveground biomass gradually shifts to higher latitudes and the intensity of the disturbance regimes increases significantly almost everywhere. CO₂ fertilization stands out as the most uncertain process, with different methods of estimation leading to diverging results by almost 155 PgC of above ground biomass at equilibrium. Overall, assuming that the sum of human pressures (e.g. wood extraction) does not change over time, that total forest cover does not change significantly and that the trend in CO₂ fertilisation as it is currently estimated from satellite proxy observations remains, results show that we have reached (or are very close to reaching) the peak of global forest carbon storage. In the short term, where increased disturbance regimes are assumed to act quicker than increased forest growth potential, global forests might instead act as a carbon source, that will require even more effort in decarbonization than previously estimated. Therefore, the potential of forests as a nature-based solution to mitigate climate change brings higher uncertainties and risks than previously thought.

1. Introduction

Global climate change puts increasing pressure on societies and ecosystems. The international community, through treaties such as the Paris agreement, has committed to keeping global warming well below 2 °C in order to avoid the worst consequences of climate change. To achieve this ambitious target, a combination of carbon emission reductions and strong carbon sequestration is necessary (Pathak *et al* 2022).

Most of the carbon sequestration currently occurs in the oceans and forests (Friedlingstein *et al* 2022, Sha *et al* 2022), and the strategies laid out to reach net carbon neutrality in the coming decades depend, to a large extent, on these natural systems to persist as strong carbon sinks (e.g. European Commission 2020).

On the long term, forests remaining an active carbon sink is by no means guaranteed (Baccini *et al* 2017). At larger spatial and temporal scales in a stable

climate, forests tend towards equilibrium, where carbon sequestration by photosynthesis is balanced out by respiration, tree decay and mortality (Looman 1976, DeAngelis and Waterhouse 1987). A changing climate can alter this balance in several ways. First, tree growth conditions depend on both the temperature regime and the water available to trees. Second, the changing climate also impacts the likelihood of occurrence and severity of some natural disturbances, such as windthrows, insect outbreaks and forest fires (McDowell *et al* 2020). Third, increased CO₂ levels in the atmosphere directly enhance the rate of tree growth (Chen *et al* 2022), as CO₂ is a primary driver of photosynthesis. This mechanism, defined as CO₂ fertilization (CFE), has contributed to the increase of the terrestrial sink in the past decades (Friedlingstein *et al* 2022). However, CO₂ is only one of the environmental factors affecting tree growth. Forests can only benefit from higher CO₂ concentrations as long as other drivers like water, energy and nutrients are not limiting primary productivity and adverse environmental conditions remain absent (Cabon *et al* 2022, Green and Keenan 2022). At global scale, evidence suggests that primary productivity is currently shifting from a period of growth enhanced by CFE, to a condition where climate change and climate related disturbances are increasingly limiting productivity (Peñuelas *et al* 2017).

To evaluate the long-term persistence of the forest carbon sink, the changes in the carbon stock in forests at equilibrium under changing climate conditions need to be understood. To model this, dynamic global vegetation models (DGVMs) have been deployed in conjunction with global atmosphere and ocean models within the frame of global Earth System Models (ESMs). However, as recently shown (Terrer *et al* 2019, Cabon *et al* 2022), these models likely overestimate the strength of the CO₂ fertilization effect due to an incomplete representation of the other limiting factors (such as the availability of nitrogen and phosphorus for growth) and would consequentially provide an overoptimistic view of the long-term persistence of the forest carbon sink. Proxies for primary productivity derived from satellite data suggest a steeper declining trend of CO₂ fertilization than that predicted by DGVMs (Wang *et al* 2020). As an alternative to ESMs, attempts have been made to predict future forest carbon storage using data driven statistical models. However, these modelling attempts have so far not included the CO₂ fertilization effect (Bastin *et al* 2019, Walker *et al* 2022), which would likely lead to an underestimation of the amount of carbon that can be stored in forests.

In this work we aim to quantify the possible persistence of the forest carbon sink by comparing potential biomass under current and future climate conditions. The objective is to better approximate changes in forest growth potential and disturbance

regimes - and their respective uncertainties -, as well as to quantify the effect of diverging estimates of CO₂ fertilization on the global forest carbon pool. This is done with a novel data-driven modelling framework that separately parameterizes and compares the CO₂ fertilization effect based on ESM data, satellite proxies and free-air CO₂ enrichment (FACE) experiments.

2. Methods

We establish the long-term persistence of the global forest carbon sink by estimating the above-ground biomass carrying capacity (BCC) under present and future climatic conditions (Roebroek 2024). BCC is the biomass of a forest ‘under prevailing environmental conditions and natural disturbance regimes, but excluding anthropogenic disturbance’ (Keith *et al* 2009, Roebroek *et al* 2023). Under the assumption that human influences (e.g. harvesting, planting, fire suppression etc) on forests remain equal over time, the expected change in BCC under a given climate projection is equal to the change of the actual biomass under that climate scenario. In doing so, we can separate the biological constraints on biomass trajectories in the future from changes in human pressure on forests such as those related to land use change.

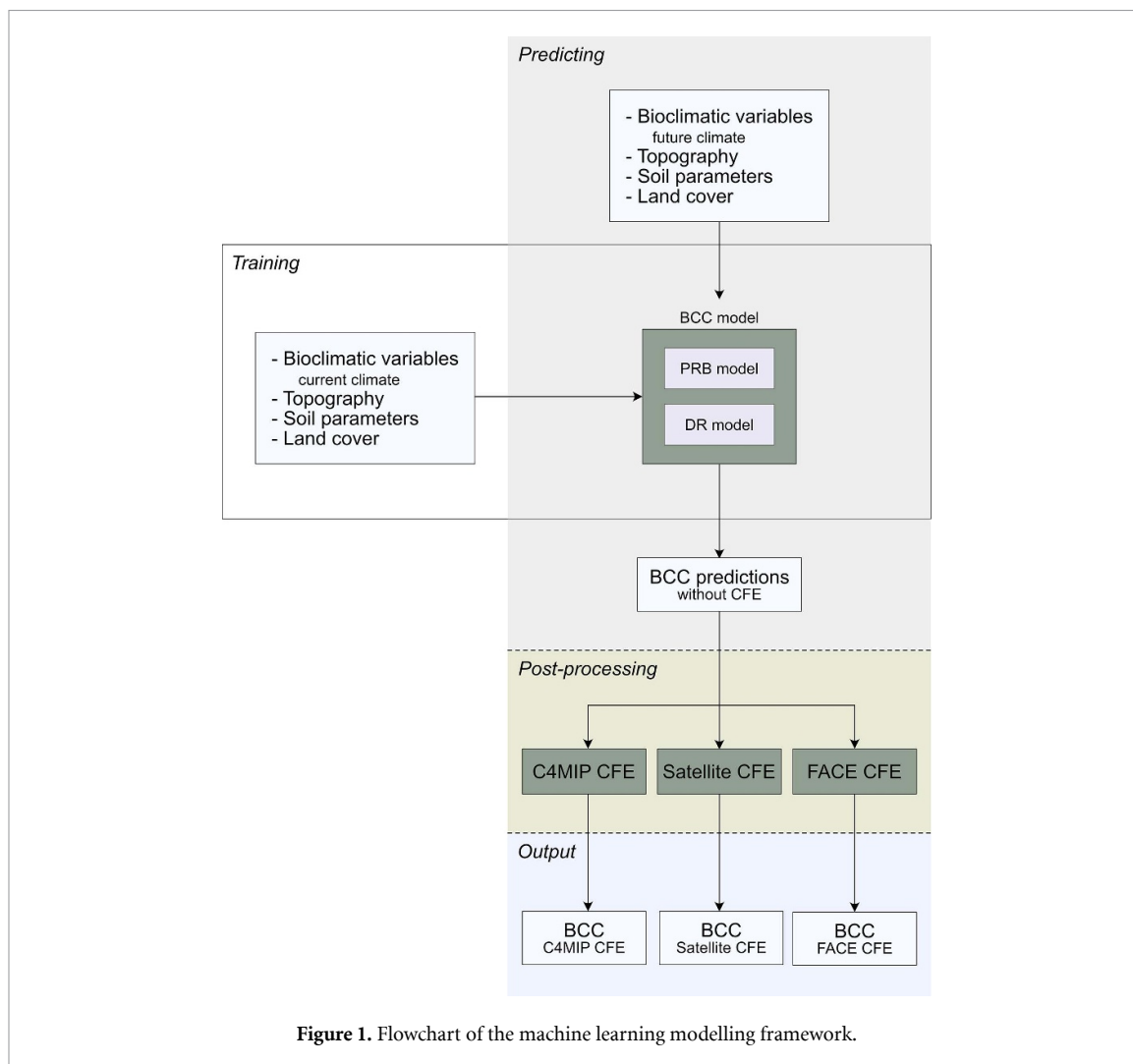
The estimates of BCC are made with a modular machine learning model framework. It is based on a simplified model definition, expanding on previous work (Roebroek *et al* 2023). It describes changes in BCC as a product of growth potential (B_p , potential biomass), natural disturbance regime ($(1 - D)$, fraction of potential biomass that is expected to be sustainable under given climate conditions) and CO₂ fertilization (F_{CO_2} , a factor adapting potential biomass and the disturbance regime to enhanced CO₂ scenarios, systematically larger than 1):

$$BCC = B_p \cdot (1 - D) \cdot F_{CO_2} \quad (1)$$

Potential biomass (B_p) is derived from satellite-based estimates of above-ground biomass (Santoro 2018) by estimating the maximum biomass achievable under given environmental conditions (climate, soil and topographical features, see table 1) using a quantile regression forest (QRF) to estimate the 100th percentile (implementation in the python package *sklearn-quantile*) (Meinshausen *et al* 2020). In doing so, potential biomass estimates approximate the hypothetical potential, and will thus be referred to as potential realized biomass (PRB). The disturbance regime (D) is modelled as the average relative deviation of biomass in current intact forests (Potapov *et al* 2017) to the PRB ($1 - \text{biomass of intact forests/PRB}$) with random forest regression (as implemented in the *scikit-learn* python package) under the same environmental conditions as used to model the PRB. Both the QRF and regular random forest

Table 1. Datasets used in this work and their references.

Dataset	Version	References
Above ground biomass	GlobBiomass	Santoro (2018)
Landcover	CGLS-LC100 V3	Buchhorn <i>et al</i> (2020)
Bioclimatic variables	WorldClim V2.1	Fick and Hijmans (2017)
Soil characteristics	SoilGrids V2	Poggio <i>et al</i> (2021)
Digital elevation model	GMTED2010	Danielson and Gesch (2011)
Intact forests	IFL	Potapov <i>et al</i> (2017)
Climate models	C4MIP	Jones <i>et al</i> (2016)

**Figure 1.** Flowchart of the machine learning modelling framework.

regressor have 50 trees and share their parameterization. Hyperparameters were chosen with a grid-based 5-fold cross validation approach, minimizing the pinball loss (with alpha set to 0.995) for the predictions of PRB. This procedure is described in more detail in Roebroek *et al* (2023) and visualized in figure 1. The quality of the estimates of the natural disturbance regime is dependent on the intact forest data. Excluding the error in mapping untouched forests, uncertainty predominantly comes from the fact that all global forests have indirectly been altered to some extent by human actions, such as by increased likelihood of drought and increasing global temperatures.

These indirect effects have not been included in the current analysis.

The original model description in Roebroek *et al* (2023) was purely based on current environmental conditions, for which various predictors are available. In order to transpose the model framework to future climate scenarios, the set of environmental predictors had to be adapted. Soil water availability and some soil characteristics deemed most dependent on the state of the climate (i.e. nitrogen, pH, organic carbon and cation exchange capacity) were excluded from the analyses as no comparable datasets exist for future climate conditions. The remaining soil characteristics

in the SoilGrids V2 (Poggio *et al* 2021) describe soil physical properties (fraction sand/silt/clay and bulk density) and are assumed to remain constant to the end of this century. Current and future climate features (bioclimatic variables) were obtained from the WorldClim V2.1 database (Fick and Hijmans 2017), which are generated from the CMIP6 model ensemble outputs and bias corrected using current weather station observations. From this data we have selected all (25) climate models, 3 future climate scenarios (*sustainability* (SSP1-2.6), *middle of the road* (SSP2-4.5), *regional rivalry* (SSP3-7.0) for the end-of-century time frame (period 2081–2100) as well as data on current (1970–2000) climate conditions. Each of the three future climate scenarios is available from all climate models, with few exceptions (see table S1 in the supplementary information) (Fick and Hijmans 2017).

This modelling approach is a space-for-time analogy approach in which future predictions of potential biomass and disturbance regimes are based on currently observed values found in locations with similar environmental characteristics (otherwise known as climate analogues). We excluded the strongest climate change scenario (*fossil-fueled development* (SSP5-8.5)) available in the WorldClim V2.1 database, as climate analogues for this scenario are unlikely to be found. Additionally, we focus on the end-of-century time frame as this model does not have any explicit time dimension. Results presented here need to be interpreted as if the climate seen in the bioclimatic features is stable at the end of the century and forests have had the time to adjust to these new conditions. The analysis is performed at a 10 km spatial resolution using an equal-area Eckert IV projection for the entire global domain.

The last component of the modelling setup, CO₂ fertilization, is calculated separately with three different methodologies: (1) ESMs, (2) time series of satellite-derived proxies for tree growth and (3) experiments of CO₂ enrichment (free-air concentration enrichment experiments). First, to derive a global CO₂ fertilization factor from ESMs we used the ‘Biogeochemical’ (BGC) experiment of the C4MIP framework (Jones *et al* 2016) (containing a subset of the CMIP6 ensemble). The C4MIP framework is an experimental model setup in which the CO₂ concentration is increased consistently with 1% per year, starting from preindustrial CO₂ concentrations. It is subdivided in three runs: (1) only the biogeochemical cycles ‘see’ the increase in CO₂ concentrations (C4MIP: 1% BGC), while the radiative forcing protocol keeps running with preindustrial CO₂ concentrations; (2) only the radiative forcing ‘sees’ the increase in CO₂ concentrations, while the biogeochemical cycles do not; and (3) a control run, where both biogeochemical and radiative forcing respond to enhanced CO₂ concentrations.

To derive a CO₂ fertilization factor, we used the results of the first experiment of all 11 models used the C4MIP runs by calculating the fractional increase of total live carbon (C_LIVE, an approximation of biomass) for future predicted CO₂ concentrations under the socio-economic pathways as described in Meinshausen *et al* (2020), compared to biomass under current CO₂ concentrations (390 ppm corresponding to the level at the time of the original biomass data (Santoro 2018)). Note that this factor is different from the β -parameter (CO₂ effect on the carbon cycle) used in IPCC literature.

In the second approach, we integrated satellite-based proxy data of CO₂ fertilization of primary productivity (GPP, instead of biomass stocks) with the approach outlined above. This is because deriving a global CO₂ fertilization factor from satellite observations alone is currently not feasible. Calculation methods are identical, but instead of using future atmospheric CO₂ given for the different climate scenarios, we use the concentration where the trend in CO₂ fertilization of GPP observed by Wang *et al* (2020) reaches zero (approximately 405 ppm).

The third approach relies on results from FACE experiments. Terrer *et al* (2019) derived a global F_{CO_2} factor of 1.12 ± 0.03 by extrapolating the results of experimental CO₂ enrichment studies, often called free-air concentration enrichment (FACE) experiments. This factor has only been derived for the SSP2–4.5 scenario (at 625 ppm) due to the setup of the FACE experiments, and we will use this value directly in this context.

To interpret the results, some considerations need to be made about the CO₂ fertilization factor. All derivations have strong caveats. The factor derived from most ESMs is overoptimistic, as comprehensively described in Terrer *et al* (2019). This is mainly due to the incomplete representation of other limiting factors to tree growth within the model implementations, such as nitrogen (some models) and phosphorus availability (most models). We included the factor in this analysis as a reference, as it underpins the current state of the art future carbon projections, the IPCC literature, and the international climate change mitigation policies. The second, satellite derived factor, is based on proxies of GPP instead of carbon stocks. To extract a factor, we assumed that when the sensitivity of GPP on the atmospheric CO₂ concentration is reduced to zero, biomass will reach equilibrium. In practice, biomass can still increase even after GPP becomes insensitive to further CO₂ increase, although this effect will likely be minor relative to the current forest carbon stock (Luyssaert *et al* 2008). The third, FACE derived factor brings high uncertainty because the global distribution of the FACE experiments is strongly concentrated in temperate regions, with no or few experimental sites in arid and tropical regions.

Additionally, it needs to be noted that all three schemes boil down to a single global constant fertilization factor. As the carbon fertilization effect is strongly dependent on microclimate, soil water availability and specific species composition, this choice likely leads to an underestimation of the CO₂ fertilization effect in water-limited areas, and an overestimation in others (Meinshausen *et al* 2020). Although the CO₂ fertilization component brings a lot of caveats, its inclusion is fundamental to this approach as the climate parameterization from WorldClim only includes the indirect effect of CO₂. The model framework presented here is modular and can deal with various sources of information in a homogeneous way. It expands on the work of Terrer *et al* (2019) by including a satellite derived CFE factor and uses climate scenarios to study various future pathways of the possibility of the carbon sink to persist over the coming decades.

3. Results

BCC changes substantially under all climate change scenarios (figure 2). In the high-latitude regions, BCC will increase under all scenarios, independently from the CO₂ fertilization calculation method. The tropical regions, however, show a large divergence, with the C4MIP CO₂ fertilization causing the BCC to increase under stronger climate change scenarios, while a net loss is predicted when following satellite derived CFE. The strength of the CFE from the FACE experiments falls in the middle between the previous two values.

Global aggregate values allow us to study the shifts in figure 2 in more detail (figure 3 and table 2). Potential biomass—or the potential growth of forests—increases almost everywhere in the world, with global values ranging from 120 Pg to 155 Pg of AGB. This is partly offset by an increase in natural disturbances, particularly notable in the tropical rainforests (supplementary figure 1), which increases under more severe climate scenarios. Combined, but without including CFE, they indicate an increase between 49 and 58 Pg of AGB. These changes follow major trends described in the literature. First, the likelihood of disturbance is reduced in the high-latitude areas, while increasing in the temporal and tropical zones. Second, the growth potential in the high-latitude regions increases, with reduced temperature variability, higher mean annual temperatures and a consequential longer growing season. Lastly, other regions have a more variable shift in growth potential, based on local energy- and water availability/limitations (Keenan 2015, Forzieri *et al* 2022).

The three CO₂ fertilization schemes show much more diverging results, suggesting a high degree of uncertainty in this component. Following the C4MIP derived CO₂ fertilization scheme, BCC increases with the severity of the climate change scenario, with the

maximum value of 383 Pg of AGB, achieved at the end of the century under SSP3-7.0. When looking at the satellite derived CO₂ fertilization, conclusions are starkly different. Under all scenarios, CO₂ fertilization equates to approximately 14 Pg AGB, with the resulting change in BCC falling between 63 and 73 Pg AGB. Under the SSP3-7.0 scenario, this is a difference of 310 Pg of AGB between the carbon fertilization schemes, equivalent to about 155 PgC. The CFE derived from the FACE experiments show intermediate values at 140 Pg of AGB increase (SSP2-4.5). As a reference, the last row in figure 3 shows the difference in the live carbon pool in the C4MIP modelling intercomparison product. The estimate lies close to the change in BCC, given that the calculations are developed largely independently from C4MIP and only share their relationship between atmospheric CO₂ concentrations and its direct effect on vegetation.

3.1. Changes in water and energy availability

To better understand the main drivers of the changes presented above, we assessed the change in the main climate parameters of the modelling framework in regions with future gains or losses in BCC compared to current values (SSP2-4.5 at the end of the century, without considering CFE). We used four major climate determinants of the spatial distribution of forest growth: (1) annual mean temperature, (2) temperature seasonality, (3) annual precipitation and (4) precipitation of the driest quarter. The change in BCC yielded by increases in annual temperature is largely positive but does not substantially capture the effective change in BCC (figure 4). Temperature seasonality instead shows a much clearer response. The stronger the decrease in temperature seasonality (or the lower the increase), the more beneficial it is for forest growth, likely because of the positive impact on the length of the growing season. This effect is especially pronounced in the high-latitude regions, where currently the strong seasonal cycle limits the growing season.

A stronger increase in annual precipitation almost everywhere correlates with a higher chance in increased expected biomass. An exception to this pattern is the high-latitude regions. This could potentially be explained by a reduction in energy availability (by increased cloud cover) rather than an actual reduction in BCC caused by higher water availability, although this could also occur in regions where water-logging is currently already hindering the growth of trees. Precipitation in the driest quarter, a fundamental parameter for understanding the establishment and survival of trees, shows similar (and even stronger) patterns as annual precipitation. In the low-latitude regions an increase in expected biomass overlaps with an increase in water availability in the driest quarter, while a loss of BCC corresponds to a

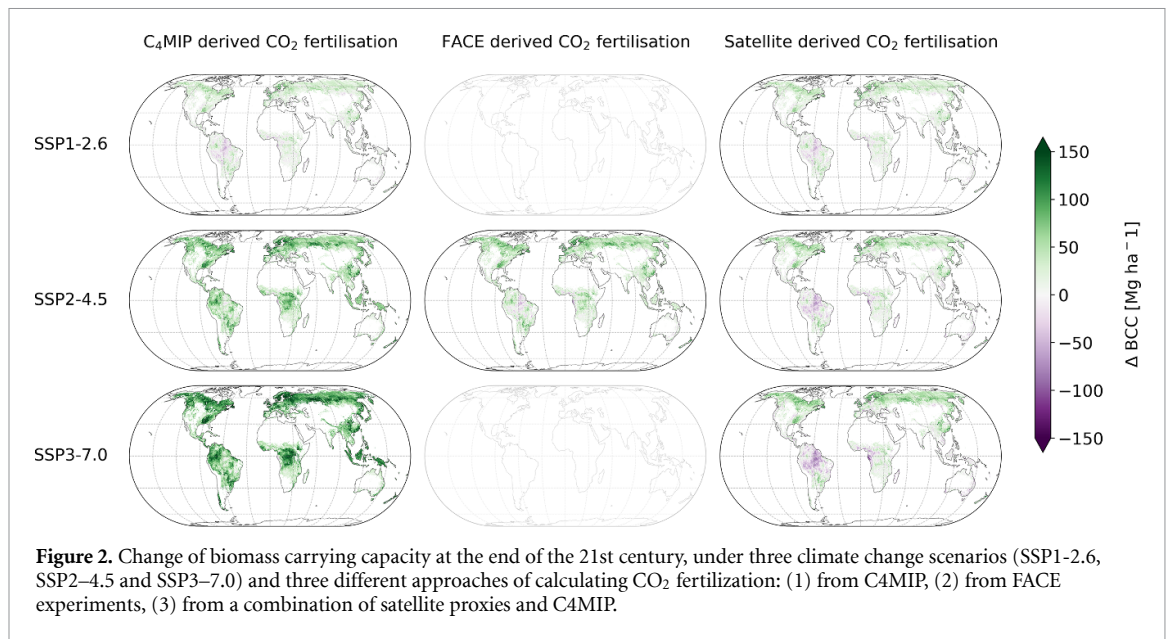


Figure 2. Change of biomass carrying capacity at the end of the 21st century, under three climate change scenarios (SSP1-2.6, SSP2-4.5 and SSP3-7.0) and three different approaches of calculating CO₂ fertilisation: (1) from C₄MIP, (2) from FACE experiments, (3) from a combination of satellite proxies and C₄MIP.

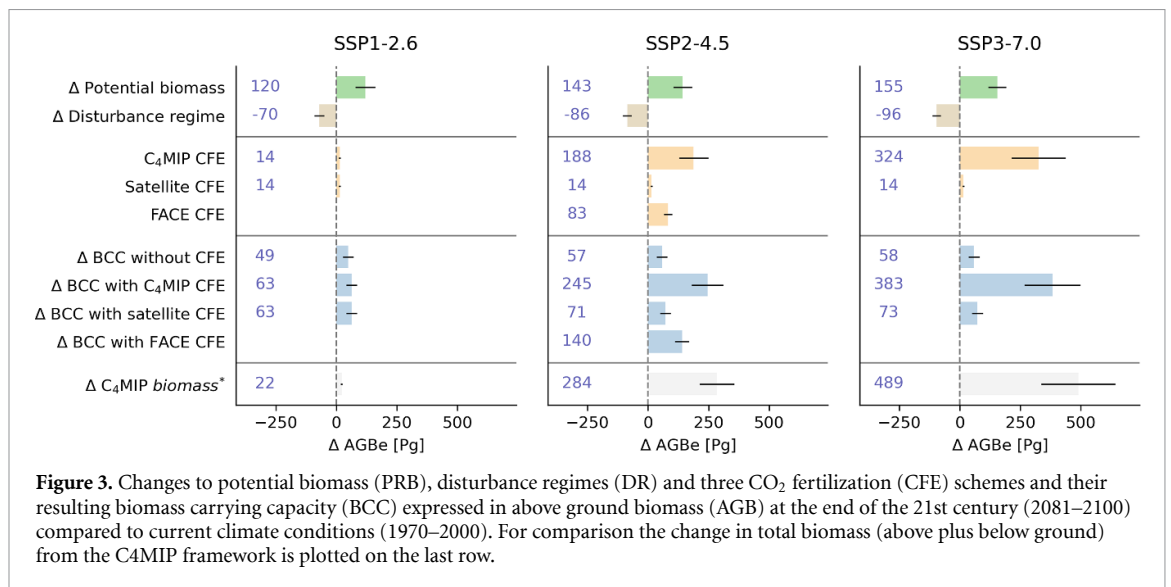


Figure 3. Changes to potential biomass (PRB), disturbance regimes (DR) and three CO₂ fertilisation (CFE) schemes and their resulting biomass carrying capacity (BCC) expressed in above ground biomass (AGB) at the end of the 21st century (2081–2100) compared to current climate conditions (1970–2000). For comparison the change in total biomass (above plus below ground) from the C₄MIP framework is plotted on the last row.

decrease. Again, at the highest latitudes the relation seems to reverse, but the reasoning applied above should equally hold in this case: a loss in energy-availability might be the culprit in the loss of BCC in such energy-limited systems.

4. Discussion and outlook

For the interpretation of the results, it needs to be considered that the model framework presented here is an equilibrium forest model and does not consider any temporal dimension other than the one coming with the changes in climate predicted by the CMIP6 ensemble. This means that evolution of forests is not directly modelled but is assessed at quasi-equilibrium with the changing climate conditions. This likely implies that actual carbon stocks

would lie below the one predicted under the equilibrium conditions considered by the presented modelling framework. Reasons are that (A) increases in biomass occur relatively slowly, while a more severe disturbance regimes can show its effect on much shorter time scales and (B) the species composition at optimal (at least for the point of view of carbon storage) equilibrium conditions might differ drastically from currently present composition. For example, in the boreal zones the evergreen needle-leaf forests that are currently present have been found to struggle under changing conditions because of the increased growing season length and the consequential increase of transpiration (and thus the lower water availability during the growing season) (Buermann *et al* 2018). Changes in species composition, especially in the world's coldest regions, are a relatively slow process which might

Table 2. Current and future estimates of potential biomass (PRB), disturbance regimes (DR) and three CO₂ fertilization (CFE) schemes and their resulting biomass carrying capacity (BCC) expressed in Pg above ground biomass (AGB). The differences between future and current climate estimates are shown in figure 2.

Variable	Current climate (1970–2000)	Future climate (2081–2100)		
		SSP1-2.6	SSP2-4.5	SSP3-7.0
Potential realized biomass (Pg AGB)	1225.3	1344.9 ± 41.4 (n = 25)	1368.0 ± 38.3 (n = 24)	1380.1 ± 36.9 (n = 23)
Disturbance regime (Pg AGB)	590.6	660.7 ± 20.1 (n = 25)	676.3 ± 18.2 (n = 24)	687.0 ± 17.1 (n = 23)
BCC without CFE (Pg AGB)	634.7	684.2 ± 22.3 (n = 25)	691.7 ± 21.9 (n = 24)	693.1 ± 22.4 (n = 23)
CFE (Pg AGB)				
C4MIP	—	13.8 ± 4.0 (n = 275)	188.3 ± 60.1 (n = 264)	324.2 ± 111.5 (n = 253)
Satellite	—	13.8 ± 4.0 (n = 275)	14.1 ± 4.1 (n = 264)	14.2 ± 4.1 (n = 253)
FACE	—	—	83.0 ± 17.3 (n = 72)	—
BCC with CFE (Pg AGB)				
C4MIP	—	698.0 ± 22.7 (n = 275)	880.0 ± 65.7 (n = 264)	1017.3 ± 115.6 (n = 253)
Satellite	—	698.0 ± 22.7 (n = 275)	705.8 ± 22.3 (n = 264)	707.2 ± 22.8 (n = 253)
FACE	—	—	774.7 ± 29.6 (n = 72)	—

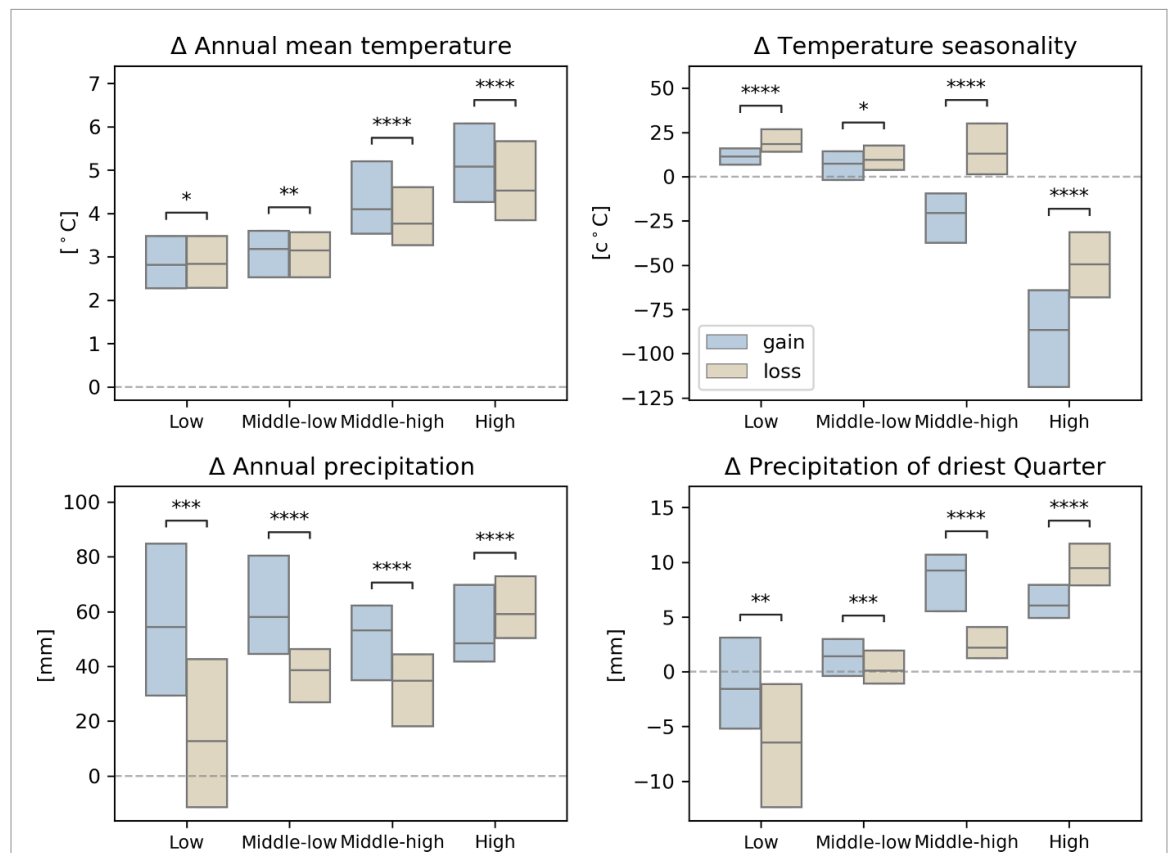


Figure 4. Changes in four climatic features under SSP2–4.5 climate scenario at the end of the century under forests gaining or losing in biomass carrying capacity excluding CO₂ fertilization. Results are presented in bins of latitudinal zones: below 20 degrees (low), between 20 and 40 degrees (middle-low), between 40 and 60 degrees (middle-high) and above 60 degrees (high). The bars represent the interquartile range (25th to 75th percentile) of the bioclimatic variables based on 25 Earth System Models, with the median displayed as the central horizontal line. The significance of the change is displayed above the bars: * (p-value between 0.01 and 0.05), ** (p-value between 0.01 and 0.001), *** (p-value between 0.001 and 0.0001) and **** (p-value below 0.0001).

require decades to centuries before forests are again in equilibrium with local climate.

Our results show a high level of uncertainty in predicting future carbon storage in forests, with the estimates strongly depending on the method, data sources and modelling strategy. We designed the machine learning model framework to be flexible and allow for the ingestion of different estimates and scenarios of a changing climate, as well as (partially) independent estimates of the CO₂ fertilization effect. In doing so, however, we propagate the assumptions and uncertainties contained in the data sources. From our results we conclude that the most uncertain component in estimating future carbon stocks in forests, other than the climate scenarios themselves, is the CO₂ fertilization effect. Following the evidence from the climate models yields much higher values than by constraining the fertilization with satellite observations, with the results from the FACE experiments falling in between. These three methods all have their own shortcomings: climate models may overestimate the sensitivity of photosynthesis to the atmospheric CO₂ concentration because not all constraints of primary productivity are included. Trends derived from satellite records are based on proxies of photosynthesis, which then need to be translated to effective changes in carbon fluxes, and the separation of the effects of the multiple co-drivers is challenging. FACE experiments might yield the most ecologically accurate representation of how vegetation would react to an increase in atmospheric CO₂ concentration, but they are limited in spatial extent. To extrapolate these plot experiments to realistic global estimates, however, would require a vast network of such sites distributed over ecosystem types and age classes. Currently, most FACE experiments are in temperate climates and focus on young forests and therefore the extrapolation to a global value necessarily generates large uncertainties. Adding more data sources or using different modeling strategies that include a disturbance regime and various estimates of CO₂ fertilization would likely not reduce uncertainty in the estimates and would likely leave our conclusions unchanged.

4.1. Human interventions

Future global forest biomass will differ from that of today, with expected changes in distribution, species composition, as well as growth potential. Human interventions, other than changes in atmospheric CO₂ concentrations, will have a major influence on how the predicted changes will unfold. First, to translate the changes in BCC analyzed in this study into effective changes in forest biomass, these interventions need to be considered. By retaining current pressures on forests—i.e. retaining current harvest levels, but allowing for changes in the spatial harvesting patterns—and assuming that the climate sensitivity of

managed forests is equal to that of intact forests, the absolute global changes of potentials in figure 3 could be translated directly into actual changes in carbon storage.

Second, the disturbance regimes presented in this work are considered to be natural (Roebroek *et al* 2023). In practice, under certain conditions, some of the disturbances included in these disturbance regimes might be (partially) alleviated by forest management (e.g. fire suppression and exclusion). Third, human driven relocation of species (also known as assisted migration) might accelerate forest adaptation to climate change, but this is controversial and in other circumstances relocation of species has been shown to backfire due to the increased vulnerability to pests (Sang *et al* 2023).

4.2. Implications

The policy framework targeting net neutrality in the coming decades heavily relies on global forests to remain a strong active carbon sink. This is exemplified in this work by calculating the additional carbon stored on land under future climate and CO₂ concentrations found in the C4MIP project, yielding a possible 489 Pg of biomass (roughly doubling current biomass) under the most severe climate scenario analyzed in this work. Most of the uncertainty in projecting BCC derives from different sources of CO₂ fertilization information, rather than from the climate signal. Values from our machine learning model considering the carbon fertilization coming from C4MIP (although only focusing on above ground biomass) are on the same order of magnitude at 383 Pg of biomass. If, however, the declining trends in satellite derived carbon fertilization continue, only 73 Pg AGB (about 20%) of the carbon storage potential might be available. Expressed in carbon, this value translates to 37 PgC, or about 4 years' worth of emissions taking 2019 as a reference. In other words, if total human pressures on forests remain stable this century, and trends in carbon fertilization continue to decline, we might be very close to a plateau in forest carbon storage, with the potential of dipping below current levels before returning to this plateau.

The consequences of this notion from the point of view of halting climate change and reaching carbon neutrality in the coming decades are major. Current plans and calculations heavily rely on existing forests continuing to act as strong carbon sinks into the future, which might not be realistic under the pressure of climate change. In the worst-case scenario of a substantial increase in climate driven disturbances, global forests in the short term might start acting as a carbon source, rather than a sink. In turn, this would require a significant increase in efforts to reduce carbon emissions to compensate for the lack of 'planned' additional carbon storage in forests. Relying on forests to achieve carbon neutrality in the coming

decades is therefore a risky bet according to current scientific developments.

Data availability statement

The data that support the findings of this study are openly available at the following URL/DOI: <https://doi.org/10.6084/m9.figshare.25002353>.

Author contributions

Conceptualization was done by all co-authors. C T J R designed the methodology with the contribution of A C. C T J R performed the formal analysis. The text writing of the original draft was done by C T J R, A C, G D, L C, R A. E L D and S I S supervised the work.

ORCID iDs

Caspar T J Roebroek  <https://orcid.org/0000-0002-1733-0845>

Luca Caporaso  <https://orcid.org/0000-0002-1370-693X>

Ramdane Alkama  <https://orcid.org/0000-0001-9864-2084>

Gregory Duveiller  <https://orcid.org/0000-0002-6471-8404>

Edouard L Davin  <https://orcid.org/0000-0003-3322-9330>

Sonia I Seneviratne  <https://orcid.org/0000-0001-9528-2917>

Alessandro Cescatti  <https://orcid.org/0000-0002-2769-2591>

References

- Baccini A, Walker W, Carvalho L, Farina M, Sulla-Menashe D and Houghton R A 2017 Tropical forests are a net carbon source based on aboveground measurements of gain and loss *Science* **358** 230–4
- Bastin J-F, Finegold Y, Garcia C, Mollicone D, Rezende M, Routh D, Zohner C M and Crowther T W 2019 The global tree restoration potential *Science* **365** 76–79
- Buchhorn M, Bertels L, Smets B, Roo B D, Lesiv M, Tsendbazar N-E, Masiliunas D and Li L 2020 Copernicus global land service: land cover 100m: version 3 globe 2015–2019: algorithm theoretical basis document (Zenodo) (<https://zenodo.org/record/3938968>)
- Buermann W *et al* 2018 Widespread seasonal compensation effects of spring warming on northern plant productivity *Nature* **562** 110–4
- Cabon A *et al* 2022 Cross-biome synthesis of source versus sink limits to tree growth *Science* **376** 758–61
- Chen C, Riley W J, Prentice I C and Keenan T F 2022 CO₂ fertilization of terrestrial photosynthesis inferred from site to global scales *Proc. Natl Acad. Sci.* **119** e2115627119
- Danielson J J and Gesch D B 2011 Global multi-resolution terrain elevation data 2010 (GMTED2010) p 34
- DeAngelis D L and Waterhouse J C 1987 Equilibrium and nonequilibrium concepts in ecological models *Ecol. Monogr.* **57** 1–21
- European Commission 2020 Stepping up Europe's 2030 climate ambition investing in a climate-neutral future for the benefit of our people (available at: <https://eur-lex.europa.eu/legal-content/EN/TXT/?uri=CELEX:52020DC0562>)
- Fick S E and Hijmans R J 2017 WorldClim 2: new 1-km spatial resolution climate surfaces for global land areas *Int. J. Climatol.* **37** 4302–15
- Forzieri G, Dakos V, McDowell N G, Ramdane A and Cescatti A 2022 Emerging signals of declining forest resilience under climate change *Nature* **608** 534–9
- Friedlingstein P *et al* 2022 Global carbon budget 2022 *Earth Syst. Sci. Data* **14** 4811–900
- Green J K and Keenan T F 2022 The limits of forest carbon sequestration *Science* **376** 692–3
- Jones C D *et al* 2016 C4MIP—the coupled climate–carbon cycle model intercomparison project: experimental protocol for CMIP6 *Geosci. Model Dev.* **9** 2853–80
- Keenan R J 2015 Climate change impacts and adaptation in forest management: a review *Ann. For. Sci.* **72** 145–67
- Keith H, Mackey B G and Lindenmayer D B 2009 Re-evaluation of forest biomass carbon stocks and lessons from the world's most carbon-dense forests *Proc. Natl Acad. Sci.* **106** 11635–40
- Looman J 1976 Biological equilibrium in ecosystems I. A theory of biological equilibrium *Folia Geobot. Phytotax.* **11** 1–21
- Luyssaert S, Schulze E D, Börner A, Knohl A, Hessenmöller D, Law B E, Ciais P and Grace J 2008 Old-growth forests as global carbon sinks *Nature* **455** 213–5
- McDowell N G *et al* 2020 Pervasive shifts in forest dynamics in a changing world *Science* **368** eaaz9463
- Meinshausen M *et al* 2020 The shared socio-economic pathway (SSP) greenhouse gas concentrations and their extensions to 2500 *Geosci. Model Dev.* **13** 3571–605
- Pathak M, Slade R, Pichs-Madruga R, Ürge-Vorsatz D, Shukla P R and Skea J 2022 Climate Change 2022: technical summary climate change 2022: mitigation of climate change *Contribution of Working Group III to the Sixth Assessment Report of the Intergovernmental Panel on Climate Change* ed P R Shukla *et al* (Cambridge University Press) (available at: www.ipcc.ch/report/sixth-assessment-report-working-group-3/)
- Peñuelas J, Ciais P, Canadell J G, Janssens I A, Fernández-Martínez M, Carnicer J, Obersteiner M, Piao S, Vautard R and Sardans J 2017 Shifting from a fertilization-dominated to a warming-dominated period *Nat. Ecol. Evol.* **1** 1438–45
- Poggio L, de Sousa L M, Batjes N H, Heuvelink G B M, Kempen B, Ribeiro E and Rossiter D 2021 SoilGrids 2.0: producing soil information for the globe with quantified spatial uncertainty *SOIL* **7** 217–40
- Potapov P *et al* 2017 The last frontiers of wilderness: tracking loss of intact forest landscapes from 2000 to 2013 *Sci. Adv.* **3** e1600821
- Roebroek C T J 2024 Climate policies for carbon neutrality should not rely on the uncertain increase of carbon storage in existing forests *Figshare* (<https://doi.org/10.6084/m9.figshare.25002353.v1>)
- Roebroek C T J, Duveiller G, Seneviratne S I, Davin E L and Cescatti A 2023 Releasing global forests from human management: how much more carbon could be stored? *Science* **380** 749–53
- Sang Z, Hamann A and Rweyongeza D 2023 Adapting reforestation programs to observed and projected climate change *Mitig. Adapt. Strateg. Glob. Change* **28** 14
- Santoro M 2018 GlobBiomass—global datasets of forest biomass (<https://doi.org/10.1594/PANGAEA.894711>)
- Sha Z, Bai Y, Li R, Lan H, Zhang X, Li J, Liu X, Chang S and Xie Y 2022 The global carbon sink potential of terrestrial vegetation can be increased substantially by optimal land management *Commun. Earth Environ.* **3** 1–10
- Terrer C *et al* 2019 Nitrogen and phosphorus constrain the CO₂ fertilization of global plant biomass *Nat. Clim. Change* **9** 684–9
- Walker W S *et al* 2022 The global potential for increased storage of carbon on land *Proc. Natl Acad. Sci.* **119** e2111312119
- Wang S *et al* 2020 Recent global decline of CO₂ fertilization effects on vegetation photosynthesis *Science* **370** 1295–300