

Images in cardio-thoracic surgery

Ruptured pseudoaneurysm with aorto-pulmonary shunt after aortic arch repair

Ophélie Loup^{a,*}, Daniel Ott^b, Lars Englberger^a, Thierry Carrel^a

^a Department of Cardiovascular Surgery, University Hospital of Berne, Switzerland

^b Department of Radiology, University Hospital of Berne, Switzerland

Received 9 October 2008; received in revised form 29 December 2008; accepted 30 December 2008; Available online 10 March 2009

Keywords: Marfan syndrome; Pseudoaneurysm; Aorto-pulmonary shunt

A 50-year-old female with Marfan syndrome was admitted for cardiogenic shock six years after composite graft and aortic arch replacement including en bloc reimplantation of the brachiocephalic vessels.

Findings: pseudoaneurysm of the aortic arch and ascending aorta from disconnection of brachiocephalic vessels and left coronary ostium with rupture into the left pulmonary artery (Fig. 1).

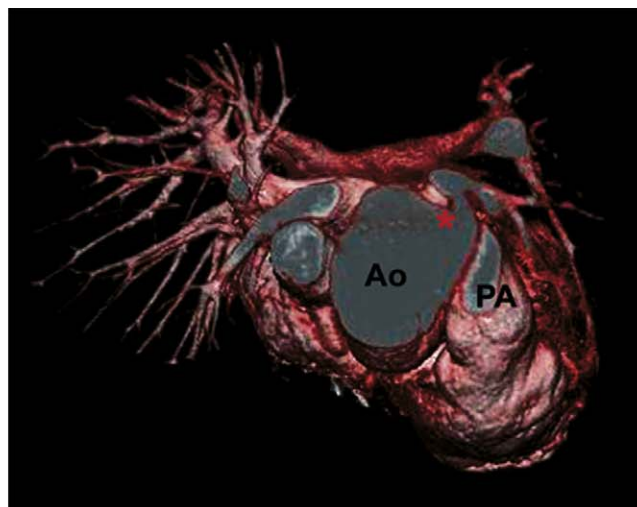


Fig. 1. CT-scan and 3D reconstruction showing pseudoaneurysm (arrow, *) penetrating into the left pulmonary artery (arrow).

* Corresponding author. Address: Department of Cardiovascular Surgery, University Hospital Berne, Freiburgstrasse, 3010 Bern, Switzerland.
Tel.: +41 31 632 2111; fax: +41 31 632 2919.

E-mail address: Ophelie.Loup@insel.ch (O. Loup).