

Molecular cloning and characterization of *NcROP2Fam-1*, a member of the ROP2 family of rhoptry proteins in *Neospora caninum* that is targeted by antibodies neutralizing host cell invasion *in vitro*

FERIAL ALAEDDINE, ANDREW HEMPHILL*, KARIM DEBACHE
and CHRISTOPHE GUIONAUD

Institute of Parasitology, Vetsuisse Faculty, University of Bern, Länggass-Strasse 122, CH-3012 Bern, Switzerland

(Received 12 December 2012; revised 12 February and 16 March 2013; accepted 17 March 2013)

SUMMARY

Recent publications demonstrated that a fragment of a *Neospora caninum* ROP2 family member antigen represents a promising vaccine candidate. We here report on the cloning of the cDNA encoding this protein, *N. caninum* ROP2 family member 1 (NcROP2Fam-1), its molecular characterization and localization. The protein possesses the hallmarks of ROP2 family members and is apparently devoid of catalytic activity. NcROP2Fam-1 is synthesized as a pre-pro-protein that is matured to 2 proteins of 49 and 55 kDa that localize to rhoptry bulbs. Upon invasion the protein is associated with the nascent parasitophorous vacuole membrane (PVM), vacuoles surrounding the host cell nucleus and, in some instances, the surface of intracellular parasites. Staining was also observed within the cyst wall of 'cysts' produced *in vitro*. Interestingly, NcROP2Fam-1 was also detected on the surface of extracellular parasites entering the host cells and antibodies directed against NcROP2Fam-1-specific peptides partially neutralized invasion *in vitro*. We conclude that, in spite of the general belief that ROP2 family proteins are intracellular antigens, NcROP2Fam-1 can also be considered as an extracellular antigen, a property that should be taken into account in further experiments employing ROP2 family proteins as vaccines.

Key words: *Neospora caninum*, rhoptries, ROP2 family, invasion.

INTRODUCTION

Neospora caninum, a member of the protozoan phylum Apicomplexa, is closely related to *Toxoplasma gondii*, with whom it shares a number of features, one of which is the intracellular lifestyle. To ensure host cell entry and intracellular survival and replication, most apicomplexan parasites possess specialized secretory organelles, namely micronemes (MIC), rhoptries and dense granules (DG). These organelles play a crucial role in invasion and modulation of the host cell (Dubremetz *et al.* 1993; Carruthers and Sibley, 1997; Ngo *et al.* 2000; Joiner and Roos, 2002). The contents of these 3 secretory organelles are sequentially released in order to establish invasion and to ensure the maintenance of the parasite–host cell interaction (Fourmaux *et al.* 1996; Carruthers *et al.* 1999; Huynh *et al.* 2003; Carruthers and Tomley, 2008). Initially, MIC proteins are secreted either prior to, or immediately upon, contact with the host cell membrane and they mediate adhesion and attachment to the host cell surface. The secretion of both rhoptry neck (RON)

and MIC proteins contributes to the biogenesis of the moving junction complex (Mordue *et al.* 1999; Besteiro *et al.* 2009), a transient feature that associates with the host cell plasma membrane and propels the parasite into the developing parasitophorous vacuole (PV) (Alexander *et al.* 2005; Lebrun *et al.* 2005). The PV membrane (PVM) is formed from the host plasma membrane together with proteins secreted from the rhoptries (Saffer *et al.* 1992; Ngo *et al.* 2004; Lebrun *et al.* 2005; Besteiro *et al.* 2009). The DG proteins are exocytosed into the PV both during and after invasion and they either remain soluble in the lumen of the PV or become associated with the PVM or the tubulovesicular network (TVN), a membranous structure within the PV. DG proteins modify the environment within the PV, thereby performing essential functions related to intracellular survival and replication (Mercier *et al.* 2005).

Rhoptry proteins have been largely investigated in *T. gondii*. Subcellular fractionation and proteomic analysis allowed the identification of about 34 rhoptry proteins (Bradley *et al.* 2005), which were classified into 3 groups. The first group includes rhoptry bulb (ROP) proteins not exhibiting any homology in *Plasmodium falciparum* and homologous proteins were found only in genera closely related to *Toxoplasma* including *Neospora* and *Sarcocystis*, but

* Corresponding author. Institute of Parasitology, Vetsuisse Faculty, University of Bern, Länggass-Strasse 122, CH-3012 Bern, Switzerland. E-mail: andrew.hemphill@vetsuisse.unibe.ch

not in *Eimeria*. The second group includes proteins restricted to the RON, which are conserved throughout the phylum Apicomplexa, including *Plasmodium* spp. The third group is formed of proteins encoding functions that are common to most eukaryotic cells, such as kinases, phosphatases and proteases (Bradley *et al.* 2005).

Proteins of the ROP2 family are among the best-studied rhoptry proteins in *Toxoplasma* and have been implicated in vaccine development (Dlugonska, 2008). This family possesses at least 12 members that share a number of features. All precursors of the ROP2 family have a signal peptide and most of them harbour a pro-region that is cleaved during maturation. The eventual maturation site is followed by an arginine-rich (R-rich) domain of 100–150 residues. Their C-termini consist of a kinase domain (El Hajj *et al.* 2006; Reese and Boothroyd, 2009), but the necessary catalytic residues for ATP-dependent phosphorylation are found only in some proteins of the family (such as ROP11, 17 and 18) but not in others (ROP2, 4, 5, 7 and 8). Rhoptry proteins have also been identified in *N. caninum* (Marugán-Hernández *et al.* 2011; Regidor-Cerrillo *et al.* 2011).

The function of most ROP2 family proteins is still largely unknown. Most members appear to play a role in PV biogenesis and in the modulation of the functional properties of the PVM. Anti-sense RNA-mediated depletion of TgROP2 resulted in several harmful effects, such as an impairment of rhoptry biogenesis and cytokinesis, a reduced capacity to invade and replicate *in vitro*, as well as an attenuation of virulence in mice (Nakaar *et al.* 2003). It was initially suggested that *T. gondii* ROP2 forms a tight interaction between the PVM and the host cell mitochondria and endoplasmic reticulum (Sinai and Joiner, 2001; Nakaar *et al.* 2003; Boothroyd and Dubremetz, 2008); however, recent work by Pernas and Boothroyd (2010) showed this was not the case.

Several studies demonstrated essential roles for TgROP18 in parasite virulence (Saeij *et al.* 2006; Taylor *et al.* 2006; Melo *et al.* 2011; Niedelman *et al.* 2012). *In vivo*, overexpression of TgROP18 increased intracellular tachyzoite multiplication (El Hajj *et al.* 2007b) and TgROP18 was shown to phosphorylate other ROPs (ROP2, 4 and 8) on the PVM. In addition, TgROP18 binds to and phosphorylates immunity-related GTPases, preventing the clearance of intracellular parasites within inflammatory monocytes and IFN- γ -activated macrophages, thus conferring parasite survival *in vivo* and promoting virulence (Fentress *et al.* 2010; Steinfeldt *et al.* 2010). In contrast to *T. gondii*, *ROP18* in *N. caninum* is a pseudogene and the parasite is unable to phosphorylate the immunity-related GTPase 6 (Reid *et al.* 2012).

To date, no rhoptry protein has been described and characterized in *N. caninum* and only comparative

genomics of *T. gondii* and *N. caninum* revealed that although both the genome and gene expression are remarkably conserved between species, some rhoptry genes are highly divergent (Reid *et al.* 2012). However, several studies from our group demonstrated that a recombinant, bacterially expressed C-terminal moiety of NcROP2Fam-1 (formerly designated recNcROP2) induced highly effective immunity against challenge infection with *N. caninum* tachyzoites in both cerebral and fetal infection mouse models (Debache *et al.* 2008, 2009, 2010).

In the present work, we report on the cloning of the cDNA encoding a full-length NcROP2Fam-1, the molecular characterization of the protein, its localization and its translocation during invasion of target cells by tachyzoites. Moreover, we show that NcROP2Fam-1 is expressed in both tachyzoite and bradyzoite stages. Lastly, using antisera produced against NcROP2Fam-1 antigenic peptides, potential immunoprotective regions of the protein have been identified.

MATERIALS AND METHODS

Cell and parasite cultures

Vero cells and human foreskin fibroblasts (HFF) were cultured at 37 °C under 5% CO₂ in RPMI 1640 medium containing 10% fetal calf serum (Gibco-Invitrogen, Carlsbad, CA, USA), 2 mM L-glutamine, 50 IU mL⁻¹ penicillin and 50 μ g mL⁻¹ streptomycin. *Neospora caninum* (Nc-Liverpool isolate) tachyzoites were grown in Vero cells in the same conditions but replacing fetal calf serum by 10% horse serum (Hemphill and Gottstein, 1996). Cultures of *N. caninum*-infected keratinocytes were prepared as described previously (Vonlaufen *et al.* 2002).

Free parasites were obtained by repeatedly passing infected cells through a 25G, 5/8 needle, washed in ice-cold medium and filtered through PD-10 columns (GE Healthcare, Piscataway, NJ, USA), as previously described (Hemphill and Gottstein, 1996).

Tachyzoite to bradyzoite *in vitro* stage conversion was performed using a published protocol (Guionaud *et al.* 2010), except that sodium nitroprusside (SNP; Sigma, St Louis, MO, USA) was used at 50 μ M for 6 days instead of 25 μ M for 9 days. BAG1, a classical bradyzoite-specific marker (McAllister *et al.* 1996; Vonlaufen *et al.* 2002, 2004), was used to monitor the conversion efficiency. For this purpose, parasites were purified from SNP-treated cells and the expression levels of BAG1 and *BAG1* mRNA were compared with those of tachyzoites by immunofluorescence (IF) and quantitative RT-PCR (qRT-PCR), respectively (Fig. S1 – in Online version only).

Table 1. Primers used for quantitative RT-PCR

(The slope and correlation coefficient (R^2) are indicated for each qRT-PCR.)

Primer	Sequence (5' to 3')	T_a (°C) ^a	Target cDNA	ToxoDB ID (NCLIV_)	Location ^b	qRT-PCR	
						Slope	R^2
NcROP2Fam-1-F	TTCTTCCCTCTCCAAGCGACA	55	<i>NcROP2Fam-1</i>	001970	e1	-3.51	0.998
NcROP2Fam-1-R	TTGAGTCGTCCCGAAGTTG				e1		
NcROP2Fam-2-F	GCAATGGATGCTTGGAGTCTG	55	<i>NcROP2Fam-2</i>	001950	e1	-3.42	0.999
NcROP2Fam-2-R	AGTTGGGTTCACCTGGTTG				e1		
NcTUBA-F	GGTAACGCCCTGCTGGGAG	58	<i>NcTUBA (alpha tubulin)</i>	058890	e1-e2	-3.32	0.999
NcTUBA-R	GCTCCAAATCCAAGAAGCGCA				e3		
NcBAG1-F	CCTCCCTCCGCTGCTATG	55	<i>NcBAG1 (bradyzoite antigen 1)</i>	027470	e2	-3.33	0.998
NcBAG1-R	TTAGGGCCCTTCTCACCTTTG				e3-e4		

^a Annealing temperature.^b Primers located within a single exon or spanning one exon-exon boundary are shown as e and e - e, respectively, with exon number(s) indicated.

Oligonucleotides

Neospora caninum-specific primers were designed based on nucleotide sequences in the ToxoDB database ((Kissinger *et al.* 2003; Gajria *et al.* 2008); <http://toxodb.org/toxo/>) and on the formerly available ApiDots database ((Li *et al.* 2003); <http://www.cbil.upenn.edu/apidots/>). All primers were purchased from MWG (Ebersberg, Germany).

RNA isolation and first strand cDNA synthesis

Total RNA was isolated from *N. caninum* Liverpool tachyzoites and first-strand cDNA synthesis reactions were performed as described previously (Matz *et al.* 1999; Guionaud *et al.* 2010). Primers NcROP2Fam-1-R (Table 1) and T-primer 3 (5'-AAGCAGTGGTATCAACGCAGAGTAC(T)₃₀ VN-3', where V = A, C or G and N = any nucleotide) were used to prime the first-strand cDNA synthesis reaction for the 5' RACE or conventional RT-PCR and 3' RACE, respectively. A manual hot-start PCR was used in order to reduce background amplifications in conventional PCR and 3'-RACE reactions.

The cDNA corresponding to the 5'-end of NcROP2Fam-1 was amplified by RT-PCR in a 100 μ L reaction volume containing 5 μ L (1/10th) of the NcROP2Fam-1-R-primed first strand cDNA, 20 pmol of each NcROP2Fam-1-5'F (5'-TTCAGAAACATGCCCCGCTAAC-3') and NcROP2Fam-1-5'R (5'-TTGGAGAGGAAGAAGGCGGT-3') primers, 0.2 mM of each dNTP and 2 U of Phusion High-Fidelity DNA polymerase (Finnzymes) in the supplied HF reaction buffer. Thirty-five PCR cycles with an annealing temperature of 58 °C were performed.

The remainder of the NcROP2Fam-1 cDNA was obtained by 3'-RACE. The 3'-RACE was carried out in a 100 μ L reaction mixture containing 2 μ L (1/10) of the first-strand cDNA prepared with T-primer 3, 4 pmol of Heel-carrier primer (5'-CTAATACGACTCACTATAGGGCAAGCAGTGGTATCAACGCAGAGT-3'), 20 pmol of each NcROP2Fam-1-3'F (5'-GAGTAGTATCTTCATACAGAAGAACGG-3') and Heel-specific (5'-CTAATACGACTCACTATAGGGC-3') primers, 0.2 mM of each dNTP and 2.5 U of Phusion High-Fidelity DNA polymerase in the supplied reaction buffer. The PCR reaction comprised 10 cycles with an annealing temperature (T_a) of 62 °C and 30 further cycles with a T_a of 55 °C.

Sequencing and sequence analyses

NcROP2Fam-1 5'-end and 3'-RACE amplicons were cloned into pCR Blunt II TOPO (Invitrogen) and sequenced on both strands using a primer walking approach. Five independent clones were sequenced

for each PCR product. Sequencing reactions were carried out using BigDye v3.1 fluorescent dye terminators and run on an ABI PRISM 3100 Genetic Analyzer (Applied Biosystems, Foster City, CA, USA). Raw sequencing data were assembled and edited with the Staden package (<http://staden.sourceforge.net/>).

Homology searches were done using BLAST (<http://www.ncbi.nlm.nih.gov/blast/>) and the Conserved Domain Database CD-Search (<http://www.ncbi.nlm.nih.gov/Structure/cdd/wrpsb.cgi>) with default settings. Proteins were aligned on the Muscle server (<http://www.drive5.com/muscle/>), minimally edited and formatted with GeneDoc (<http://www.nrbsc.org/gfx/genedoc/>). Residue grouping and shading was according to the structurally derived matrix (SDM) 12 reduced alphabet (Prlc *et al.* 2000; Solis and Rackovsky, 2000; Peterson *et al.* 2009). Potential signal peptide cleavage sites were identified with SignalP 3.0 (<http://www.cbs.dtu.dk/services/SignalP/>).

Potential alpha helices in the RAH domain were searched using Jpred3 (<http://www.compbio.dundee.ac.uk/www-jpred/>), PSIPRED v3.0 (<http://bioinf.cs.ucl.ac.uk/psipred/>) and PSSpred (<http://zhanglab.ccmb.med.umich.edu/PSSpred/>). The properties of the helices (mean hydrophobicity [$\langle H \rangle$] and mean hydrophobic moment [$\langle \mu H \rangle$]) were analysed on the HeliQuest server ((Gautier *et al.* 2008); <http://heliquest.ipmc.cnrs.fr>) and helical wheel projections were plotted using a Java applet (<http://rzlab.ucr.edu/scripts/wheel/wheel.cgi>).

For *Neospora* (Liverpool) *vs* *Toxoplasma* (ME49) genomic sequence comparisons, 50 kb segments of genomic DNA centred on the loci of interest were extracted from the ToxoDB database and low complexity regions were identified with Repeat Masker (<http://www.repeatmasker.org/cgi-bin/WEBRepeatMasker>). Genomic dot plots were generated using Advanced PipMaker ((Schwartz *et al.* 2000); <http://pipmaker.bx.psu.edu/cgi-bin/pipmaker?advanced>).

Quantitative reverse transcription-PCR

RNA transcript steady-state levels were determined by two-step qRT-PCR. Total RNA from free *N. caninum* tachyzoites or from free parasites cultured in bradyzoite conditions (up to 6 days in the presence of 50 μ M SNP, as indicated) was prepared using Trizol reagent (Invitrogen) and RNA concentrations were adjusted to 200 ng μ L⁻¹. Since some of the transcripts analysed derive from intron-less genes, RNA was digested with RNase-free DNaseI to degrade contaminating genomic DNA. Briefly, 5 μ g RNA was incubated for 10 min at room temperature with \sim 7 Kunitz units of DNaseI in 100 μ L of the 1 \times supplied buffer (Qiagen). DNaseI was heat-inactivated for 5 min at 95 °C and RNA cleaned-up

using RNeasy total RNA purification kit columns (Qiagen). RNA was eluted from the columns with RNase-free water and its concentration measured with a spectrophotometer (NanoDrop ND-1000; Thermo Scientific). First-strand cDNA synthesis was carried out in 40 μ L, using 3 μ g RNA and Omniscript reverse transcriptase (RT) following the manufacturer's instructions (Qiagen), except that 1 μ g random hexamers (Promega) were used to prime RT reactions. We performed control reactions without RT to exclude the presence of remaining genomic DNA in the cDNA preparations. RT was inactivated by heating for 5 min at 95 °C. Quantitative PCR was carried out using the QuantiTect SYBR Green PCR Kit (Qiagen). The reaction mix contained 1 \times SYBR Green Mix, 0.5 μ M each primer (Table 1), cDNA (\sim 40 ng) and water to a final volume of 20 μ L. Quantitative PCR was performed on the Rotor-Gene 6000 (Corbett Research, Sydney, Australia). Gene expressions were determined (each sample run in triplicate) using the second derivative maximum method and a standard curve based on 4-fold dilutions (ranging from 1 : 4 up to 1 : 256, each in triplicate) of a positive cDNA sample. Gene expression values were normalized to the housekeeping *Neospora* alpha tubulin transcripts. For the procedure and associated calculations, we followed the 'relative standard curve method (Singleplex) using an independent sample for a standard curve' guidelines, as described in the Applied Biosystems online guide to real-time quantitative PCR (http://www3.appliedbiosystems.com/cms/groups/mcb_support/documents/generaldocuments/cms_042380.pdf).

After each run, a high-resolution melting analysis was performed to confirm the identity of the amplified products.

Anti (α -) *NcROP2Fam-1* polyclonal antibodies (Ab)

Regions of *NcROP2Fam-1* towards which affinity-purified Ab are directed are presented in Fig. S2A and B – in Online version only.

A fragment of *NcROP2Fam-1* (aa 238–594), encompassing the whole kinase-like domain and referred to here as rec*NcROP2Fam-1*, was expressed in *Escherichia coli* as a recombinant (His)₆-tagged fusion protein. Details on the construction of the recombinant protein, on the production and affinity-purification of rabbit α -*NcROP2Fam-1* polyclonal Abs and use thereof to neutralize invasion *in vitro* can be found elsewhere (Debache *et al.* 2008). The recombinant protein, previously dubbed rec*NcROP2*, was used in a number of vaccination trials in mice (Debache *et al.* 2008, 2009, 2010).

In addition to α -rec*NcROP2Fam-1* (kinase-like domain) polyclonal Abs, 2 rabbit polyclonal

anti-peptide antisera were produced. During the first round of peptide selection we only retained peptides with a high potential antigenicity, as predicted by the consensus epitope search algorithm of the BEPITOPE software (Odorico and Pellequer, 2003). Peptides with significant identity to mammalian cell antigens or to other ROP2 family members were eliminated.

The 2 selected NcROP2Fam-1 peptides, P1 (aa 459–472; CH₃CO-CSRQGRSYDPRKHKR-CONH₂) and P2 (aa 581–594; CH₃CO-CQGDDGVDETEDTRL-CO₂H), with an N-terminal cysteine residue added for coupling (underlined), were synthesized and used to immunize rabbits (Thermo Scientific). Anti-peptide polyclonal α -P1 and α -P2 Abs were affinity-purified using the Thio-Link Gel Kit (Severn Biotech, Kidderminster, UK).

Protein extracts, SDS-polyacrylamide gel electrophoresis (SDS-PAGE) and Western blots

Total protein extracts from free parasites or from infected or uninfected Vero cells were prepared as previously described (Peixoto *et al.* 2010). We used 10 μ L mL⁻¹ Halt protease inhibitor cocktail (Pierce-Thermo Scientific) in the lysis buffer. Extracts were clarified by centrifugation and the protein concentration in the supernatant was measured using the DC Protein Assay Kit (Bio-Rad, Hercules, CA, USA).

Protein samples were mixed with reducing, denaturing sample buffer, boiled for 5 min and resolved by SDS-PAGE. Proteins were transferred onto nitrocellulose or PVDF membranes (Bio-Rad) for 1 h at 100 V using a wet transfer apparatus (Bio-Rad). Membranes were blocked by incubation in TBST (20 mM Tris, 150 mM NaCl, 0.1% (v/v) Tween 20) containing 5% non-fat dry milk. Blots were then incubated for 2 h at room temperature with the diluted primary Abs. We used affinity-purified α -recNcROP2Fam-1, α -P1 and α -P2 Abs at a dilution of 1 : 1500. Detection was performed with alkaline phosphatase-conjugated secondary Abs (Pierce-Thermo Scientific) at a dilution of 1 : 10 000 and NBT/BCIP (nitroblue tetrazolium/bromochloroindolyl phosphate; Sigma) for colorimetric detection or Lumi-Phos WB substrate (Pierce-Thermo Scientific) for detection by electrochemiluminescence on a LAS-3000 imaging system (Fujifilm).

Immunofluorescence (IF) analysis

Immunofluorescence staining was performed on purified parasites or on *N. caninum*-infected Vero cells grown on poly-L lysine-coated glass coverslips.

Free parasites were centrifuged (2000 g, 2 min at 4 °C), re-suspended by gentle pipetting in 100 μ L of fixative (2.5% paraformaldehyde (PFA)/0.05%

glutaraldehyde in PBS), distributed onto poly-L-lysine coated coverslips, left for 15 min at room temperature in the fixative and subsequently kept in pre-cooled acetone/methanol (v/v) for 30 min at -20 °C for permeabilization.

Unless otherwise stated (time-course of infection *in vitro*, see below), cells were fixed and simultaneously permeabilized with acetone/methanol. Briefly, coverslips in 24-well plates were rinsed once in PBS, immersed into pre-cooled (-20 °C) acetone/methanol (v:v) and incubated at -20 °C for 2 h.

For IF staining, coverslips were subsequently washed 3 times with PBS, 5 min each, incubated in blocking buffer (PBS/3% BSA) for 2 h and the following primary antibodies (Abs), in PBS/0.3% BSA, were applied for 1 h: (a) affinity-purified rabbit polyclonal Abs α -P1, α -P2 (this work) or α -recNcROP2Fam-1 ((Debache *et al.* 2008) and this work), used each at a 1 : 2000 dilution; (b) α -whole *N. caninum* extract rabbit antiserum (Hemphill *et al.* 1996), diluted 1 : 2500; (c) CC2, a rat monoclonal Ab reacting with a yet uncharacterized cyst wall antigen (Gross *et al.* 1995), diluted 1 : 300; (d) α -BAG1, a polyclonal rabbit Ab directed against BAG1, a classical bradyzoite-specific antigen (McAllister *et al.* 1996; Vonlaufen *et al.* 2002, 2004), diluted 1 : 300; (e) α -SAG1, a rat monoclonal Ab directed against the major immunodominant tachyzoite surface antigen (Bjorkman and Hemphill, 1998), diluted 1 : 300; and (f) E7, a mouse monoclonal Ab directed against alpha-tubulin (Developmental Studies Hybridoma Bank), diluted 1 : 2000.

Incubations with primary antibodies were followed by 3 washes in PBS for 5 min each. Alexa Fluor (AF)-labelled secondary antibodies (Invitrogen) at a dilution of 1 : 3000 (AF-488, AF-568) or 1 : 300 (AF-350) in PBS/0.3% BSA were then applied. Finally, the preparations were washed 3 times in PBS for 5 min each and samples were mounted in ProLong Gold anti-fade reagent (Invitrogen). Nuclei were eventually counterstained with 4'-6-diamidino-2-phenylindole (DAPI; Sigma) at 1 μ g mL⁻¹. Images were acquired on an Axioskop 2 fluorescence microscope (Carl Zeiss, Oberkochen, Germany). Confocal microscopy was performed on a FluoView FV1000 laser scanning microscope (Olympus, Tokyo, Japan). Images were processed with Image J 1.38 (<http://rsb.info.nih.gov/ij/>).

Immunogold-labelling and transmission electron microscopy

LR-White embedding and on-section labelling of *N. caninum* cultures were performed as previously described (Hemphill *et al.* 1997). Sections were loaded onto Formvar-carbon coated grids and non-specific binding sites were blocked for 2 h in PBS/1% BSA. They were then incubated with rabbit affinity-purified α -P1 or α -P2 antibodies diluted at 1:100 in

PBS/0.1% BSA for 1 h. After washing in 5 changes of PBS (2 min each), goat α -rabbit secondary Ab conjugated to 10 nm diameter gold particles (Amersham) was applied at a dilution of 1:5 in PBS/0.1% BSA. After extensive washing in PBS, grids were air-dried and stained with lead citrate and uranyl acetate. Specimens were viewed on a Philips 400 TEM (Philips Electronics, Eindhoven, the Netherlands) operating at 80 kV.

In order to determine the subcellular localization of NcROP2Fam-1, we analysed a series of transmission electron microscopy (TEM) photographs labelled using α -P2 Ab. We only took into consideration rhoptries/portions of rhoptries ($N = 34$, 23 longitudinal/oblique sections and 11 transversal sections) with (i) sufficient contrast to check for the eventual localization of gold particles within electron-dense rhoptries and (ii) for which the rhoptry surface was clearly delineated.

Immunolocalization of NcROP2Fam-1 during a time-course of infection in vitro

The fate of NcROP2Fam-1 during infection *in vitro* was assessed by IF after large numbers of parasites were left to adhere to cells for a short duration. NcROP2Fam-1 was then chased for up to 24 h. Briefly, Vero cells (5×10^4) were seeded onto glass poly-L-lysine-coated coverslips in 24-well tissue culture plates and cultured for 24 h until a subconfluent monolayer ($\sim 10^5$ cells) was obtained. The culture medium was aspirated from the tissue culture plates and 2×10^6 freshly purified parasites in 200 μ L of RPMI 1640 supplemented with horse serum (complete RPMI medium) were added to each well (parasites : cells ratio = 20). After 3 min at room temperature, free non-adherent parasites were washed away twice with PBS and once with RPMI 1640. Pre-warmed (37 °C) complete RPMI medium (1 mL) was then added to the wells and plates were returned to the 37 °C/5% CO₂ incubator for further short (5–90 min) or longer (24 h) periods of incubation. Infected cultures were then washed with PBS and either (i) fixed with 4% PFA in PBS for 20 min at room temperature and processed immediately for IF analysis or (ii) fixed with 4% PFA in PBS for 20 min at room temperature and permeabilized with 0.1% saponin (Sigma) in PBS for 10 min at room temperature.

Invasion inhibition assays

Invasion inhibition assays were carried out in 6-well plates, as previously described (Debache *et al.* 2008). Wells were inoculated with 2×10^5 HFF and grown to confluency. Briefly, freshly purified tachyzoites (1×10^6) were pre-incubated for 30 min at room temperature in 200 μ L RPMI 1640 medium containing 1 : 100 dilutions of the following rabbit polyclonal

Abs: α -P1, α -P2, α -recNcROP2Fam-1 (kinase-like domain) or rabbit α -NC1 (whole *N. caninum* strain NC1 lysate). As controls, tachyzoites were pre-incubated in rabbit pre-immune serum (1 : 100) or in RPMI 1640 medium.

Parasite suspensions were added to HFF monolayers in 6-well plates for 30 min at 37 °C/5% CO₂. Monolayers were washed 3 times with cold RPMI 1640 and incubated with RPMI 1640 medium containing 100 μ M pyrrolidine dithiocarbamate (PDTC), 0.2 μ M CuSO₂ and α -*N. caninum* hyper-immune serum (1 : 200) for 2 h at 37 °C/5% CO₂ to permeabilize adherent, non-invaded (extracellular) tachyzoites. Wells were then washed 3 times with cold RPMI 1640 and incubated for 1 h at 37 °C/5% CO₂ with RPMI 1640 containing DNaseI (Roche; 1 mg mL⁻¹). Wells were then washed twice with cold RPMI 1640 and a third time with RPMI 1640 containing 1 mM EDTA. Finally, monolayers were trypsinized and the DNA was purified (High Pure PCR Purification kit; Roche Diagnostics). DNA concentrations were measured by Hoechst 33 258 (Sigma) fluorimetry (Ausubel *et al.* 1997) on a Synergy HT plate reader (Biotek Instruments, Winooski, VT, USA). The number of parasite equivalents in each DNA sample (200 ng per assay, each in triplicate) was assessed by real-time PCR on a Light Cycler instrument (Roche Diagnosis, Basel, Switzerland) using an established protocol (Müller *et al.* 2002).

NcROP2Fam-1 cDNA accession number

NcROP2Fam-1 cDNA was submitted to the DDBJ/EMBL/GenBank databases under accession number HM587954.

RESULTS

Cloning and sequence analysis of NcROP2Fam-1

A sequence homology search against *N. caninum* expressed sequence tags (ESTs) in the ApiDots database (Li *et al.* 2003) using *T. gondii* ROP2 (TgROP2) cDNA (Beckers *et al.* 1994) as query sequence identified DT.92484732 as best hit. This contig spans ~ 2.8 kb and potentially encodes a 594 amino acid (aa) protein with an overall 47% identity to TgROP2. To confirm the DT.92484732 data, we initially planned to clone and sequence the corresponding cDNA as 2 overlapping 5'- and 3'-RACE products. First-strand cDNA synthesized from total RNA isolated from *N. caninum* Liverpool tachyzoites was prepared for this purpose. Several attempts to amplify the 5'-end of the transcript by 5'-RACE after tailing the first-strand cDNA with either (dG)_n or (dA)_n homopolymers were not successful and resulted in 5'-truncated products (data not shown). Finally, we amplified a nearly complete 5'-end cDNA

by conventional RT-PCR. The 3'-end of the DT.92484732 cDNA was obtained by 3'-RACE. We cloned the 5'-end RT-PCR and 3'-RACE products and sequenced 5 clones of each. A composite, consensus 2278 bp cDNA sequence made out of the 5'-end RT-PCR and 3'-RACE overlapping products was submitted to the DDBJ/EMBL/GenBank databases under accession number HM587954.

The cDNA possesses a 1785 nucleotides open reading frame (ORF) starting with an ATG initiation codon that is part of a sequence (TTCACCATGG) matching 7 positions of the previously described *T. gondii* translation initiation consensus sequence (gNCAAAATGg) (Seeber, 1997). The ORF potentially encodes a 594 aa protein matching perfectly the predicted translated product of ApiDots DT.92484732/ToxoDB NCLIV_001970 transcripts. In addition to the ~47% identity shared with *T. gondii* ROP2 and ROP8, the most closely related rhostry proteins in *Toxoplasma* (Fig. S3 – in Online version only), the predicted protein also shares 52% identity with the predicted protein encoded by NCLIV_001950, a tandem, expressed gene (Figs S3 and S4B – in Online version only) located on *N. caninum* Liverpool chromosome Ia. Both genes are located in a region of synteny shared with the region around the *ROP4/7* locus on *Toxoplasma* ME49 chromosome Ia (Fig. S5A – in Online version only, left panel). Such a syntenic region does not exist on chromosome X between *Neospora* NCLIV_001970/NCLIV_001950 and the *Toxoplasma* *ROP2/8* locus (Fig. S5A, right panel). Therefore, in spite of a higher homology of *Neospora* NCLIV_001970 and NCLIV_001950 predicted proteins with TgROP2 and TgROP8 (Fig. S3), we do not believe these gene pairs are orthologous. A recent report (Reid *et al.* 2012) established NCLIV_001950 and NCLIV_001970 as the syntenic orthologues of *Toxoplasma* *ROP4* and *ROP7*, respectively. While this might be correct for the pair NCLIV_001950/*ROP4*, our genomic analysis suggests that it is unlikely that *ROP7* and NCLIV_001970 are orthologues (Fig. S5B). For this reason, in the present work, NCLIV_001970 was named *NcROP2Fam-1* (*N. caninum* ROP2 family member 1) and NCLIV_001950 was named *NcROP2Fam-2*.

NcROP2Fam-1 possesses all features of ROP2 family proteins

The predicted *NcROP2Fam-1* precursor is 67 kDa and its deduced primary sequence exhibits all characteristics of ROP2 family members (Fig. S3A). The protein contains an N-terminal predicted signal peptide with a computed cleavage site between residues 28 and 29. In its N-terminal domain, a sequence is found (SWLQ, aa 82–85), that is reminiscent of the SΦxE consensus (where Φ is a hydrophobic residue

and x is any aa) proposed in *T. gondii* as a likely processing site for the TgSUB2 protease by Miller *et al.* (2003) and that was recently re-defined as SΦx (E/D) by Hajagos *et al.* (2011). Whether this site in *NcROP2Fam-1* actually represents a cleavage site for a TgSUB2-like *Neospora* maturase is uncertain, since there is a negatively charged (E) to neutral (Q) amino acid substitution at position P1. A second, although perfect match to the TgSUB2 consensus (SWDD, aa 39–42) was identified upstream in the *NcROP2Fam-1* precursor. This site is not conserved in other ROP2 family members (Fig. S3A). Three arginine-rich sequences (R-rich 1–3), collectively referred to as the RAH (R-rich Amphipathic Helix) domain, were also found in the N-terminal domain of *NcROP2Fam-1* (aa 111–126, 138–159 and 168–179; precursor numbering; Fig. S3A and Fig. 1). This domain was recently shown to mediate the attachment of ROP2 family proteins to membranes and especially to the PVM (Reese and Boothroyd, 2009; Fentress *et al.* 2012). Combining secondary structure predictions and α -helix properties analysis, we inferred the presence of 2 amphipathic α -helices within the portion of the RAH domain containing R-rich 2 and R-rich 3 (Fig. 1). Whereas R-rich 1 harboured a predicted α -helix (aa 110–122) it did not have a marked hydrophobic face (Fig. 1).

Additionally, a serine/threonine protein kinase-like domain was detected in the C-terminal moiety of *NcROP2Fam-1* (aa 257–546; Fig. 1 and Fig. S3A). However, this domain lacks 3 of the most invariant key residues (K, D and D residues of Hanks motifs II, VIb and VII, respectively) commonly found in ATP-binding and catalytic sites of active kinases (Hanks and Hunter, 1995). It is therefore unlikely that *NcROP2Fam-1* is an active kinase. *NcROP2Fam-1* also possesses a hydrophobic stretch (aa 473–489; Fig. S3A) encompassing Hanks domain IX that is buried within the core of other rhostry proteins adopting a kinase fold (El Hajj *et al.* 2006, 2007a, 2007b; Labesse *et al.* 2009; Qiu *et al.* 2009).

Lastly, a non-canonical motif (FENI; aa 546–549, Fig. S3A), reminiscent of the YxxΦ motif (where x is any aa and Φ is hydrophobic), as well as 7 dileucine motifs (LL; not shown) that may function as sorting signals mediating trafficking to the rhostry (Hoppe *et al.* 2000; Ngo *et al.* 2003) were found in *NcROP2Fam-1*.

NcROP2Fam-1 undergoes a proteolytic maturation

On Western blots of lysates of free *N. caninum* tachyzoites, α -P2 antibodies, raised against the C-terminal tail of *NcROP2Fam-1*, detected 2 major bands of 55 and 49 kDa, as well as a fainter band of 64 kDa, the latter being compatible with the predicted size of the pro-*NcROP2Fam-1* precursor (Fig. 2). The 55 and 49 kDa bands were repeatedly observed in all lysates of tachyzoites, regardless of

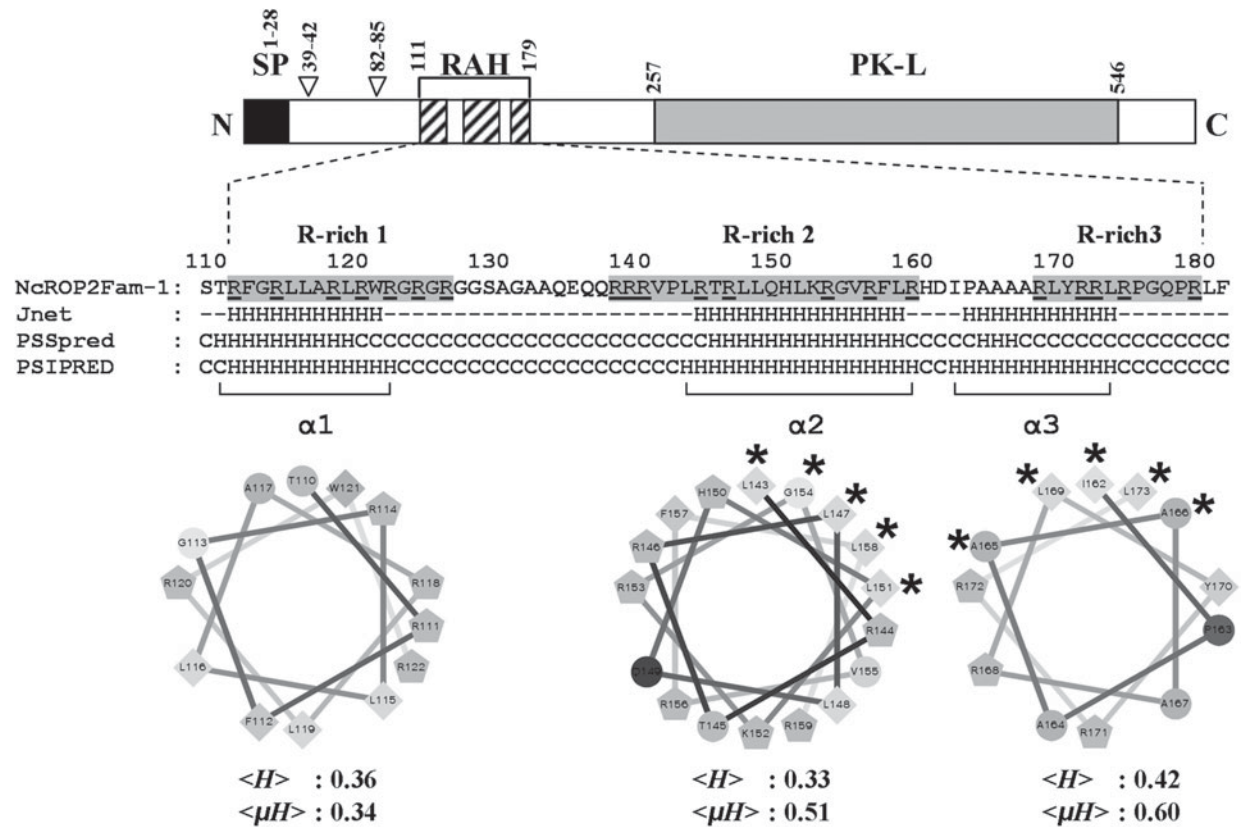


Fig. 1. Helical wheel projections of putative α helices within the NcROP2Fam-1 RAH domain. Top: schematic representation of pre-pro-NcROP2Fam-1. Black box: signal peptide (SP); empty arrowheads: regions reminiscent of the classical S Φ x(E/D) pro-ROP processing site; hatched boxes: arginine-rich (R-rich) regions 1–3 of the RAH domain; grey box: protein kinase-like (PK-L) domain. Middle: sequence of NcROP2Fam-1 RAH domain (aa 111–179, precursor protein numbering) with R-rich regions 1–3 shaded and arginine residues underlined (single letter code, numbering according to the precursor protein). Secondary structure predictions by the Jnet, PSSpred and PSIPRED servers are displayed below NcROP2Fam-1 RAH domain sequence (H: helix; C: coil; dashes: undefined). Bottom: helical wheel projections of the corresponding putative alpha helices bracketed (α 1– α 3). Diamonds: hydrophobic residues; pentagons: positively charged residues; circles: hydrophilic, uncharged residues. Mean hydrophobicities ($\langle H \rangle$) and mean hydrophobic moments ($\langle \mu H \rangle$), as determined by the HeliQuest server, are indicated. Amino acids on the hydrophobic face, if any, are indicated by asterisks.

which of the 3 antibodies was used (Fig. S2C – in Online version only) or if parasites were directly boiled in sample buffer or not. We therefore exclude that the major 55 kDa or the fainter 49 kDa bands may be artifactual (either resulting from protein degradation in a sample or from the cross-reactivity of one antibody with a ROP protein or any unrelated *Neospora* protein). The same protein pattern was also observed in lysates of parasite-infected cells, although the 64 kDa pre-pro-protein was not visible in all samples (data not shown). Additional faint bands of 30–40 kDa, not present in lysates of free tachyzoites, were detected in infected cells lysates and are likely to be due to protein degradation. There was no visible cross-reactivity of α -P2 with uninfected Vero cell lysate (Fig. 2).

The positions of the processing sites inferred from the sizes of the observed mature NcROP2Fam-1 are not compatible with a cleavage at any of the putative TgSUB2 sites mentioned above. Indeed, a cleavage of pro-NcROP2Fam-1 would give rise to a 62.5 kDa

or a 58 kDa mature protein, depending on whether the upstream or the downstream site is used, respectively. Instead, our results indicate that pro-NcROP2Fam-1 is cleaved around F 112 (pre-pro-protein numbering; major 55 kDa band), leaving the whole RAH domain intact, or around F 157 (minor 49 kDa band), leaving only R-rich 3 on mature NcROP2Fam-1 (Fig. 2).

NcROP2Fam-1 is associated with rhoptry bulbs in parasites

Affinity-purified antibodies were used to localize NcROP2Fam-1 by IF and TEM. In routine cultures of infected cells, after membrane permeabilization, NcROP2Fam-1 was detected within the apical region of intracellular parasites, at locations compatible with a rhoptry staining (Fig. 3A). In some infected cells, and only with a standard but not with a confocal microscope, we observed a punctate staining within the PV and in the host cell cytosol (not shown).

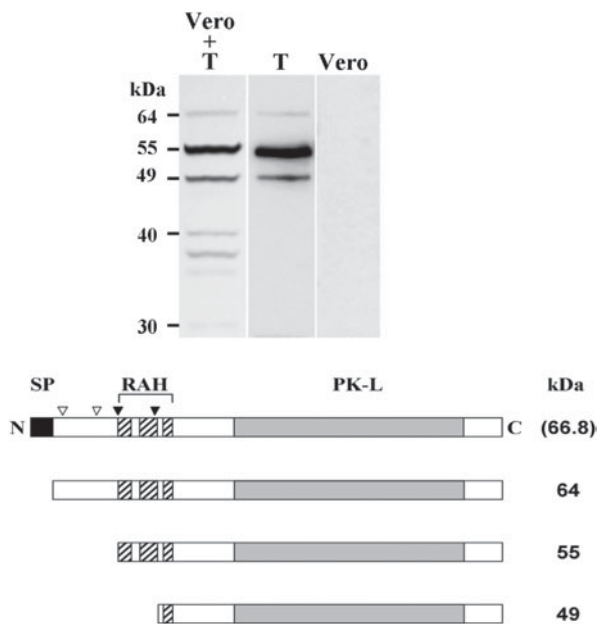


Fig. 2. NcROP2Fam-1 is expressed in tachyzoites and undergoes processing. Top: affinity-purified polyclonal antibodies raised against the C-terminus of NcROP2Fam-1 (α -P2) were used to detect the protein by Western blot in lysates of infected Vero cells containing $\sim 5 \times 10^5$ tachyzoites (Vero + T), 5×10^5 purified tachyzoites (T), or 5×10^4 uninfected Vero cells (Vero). Apparent MWs of the bands detected are indicated. Bottom: a schematic representation of pre-pro-NcROP2Fam-1 is shown (66.8 kDa, deduced from the cDNA sequence and not visible on the blot) together with the proteins inferred from the bands detected by Western blot. Black box: signal peptide (SP); empty arrowheads: regions reminiscent of the classical S Φ _x(E/D) pro-ROP processing site; filled arrowheads: actual processing sites, as deduced from the Western blot; hatched boxes: R-rich regions 1–3 of the RAH domain; grey box: protein kinase-like (PK-L) domain.

Immunogold-TEM was performed on *N. caninum*-infected keratinocytes using α -P1 or α -P2 antibodies. In tachyzoites, labelling was clearly associated with rhoptry bulbs (Fig. 3B; Fig. S2D and Table S1 – in Online version only).

NcROP2Fam-1 is secreted and associates with the PVM and the surface of invaded and adherent parasites

Neospora caninum tachyzoites were allowed to interact with host cells for 3 min and non-invaded/non-adherent parasites were washed away. This time-point was designated as time-point zero of infection. At 5 min post-infection (p.i.) and without permeabilization, anti-NcROP2Fam-1 antibodies revealed a punctate staining pattern on the surface of a small amount of parasites per coverslip, while a monoclonal Ab directed against cellular alpha-tubulin applied simultaneously failed to stain the host cell cytoskeleton, confirming that under our experimental conditions the cellular membrane was not compromised

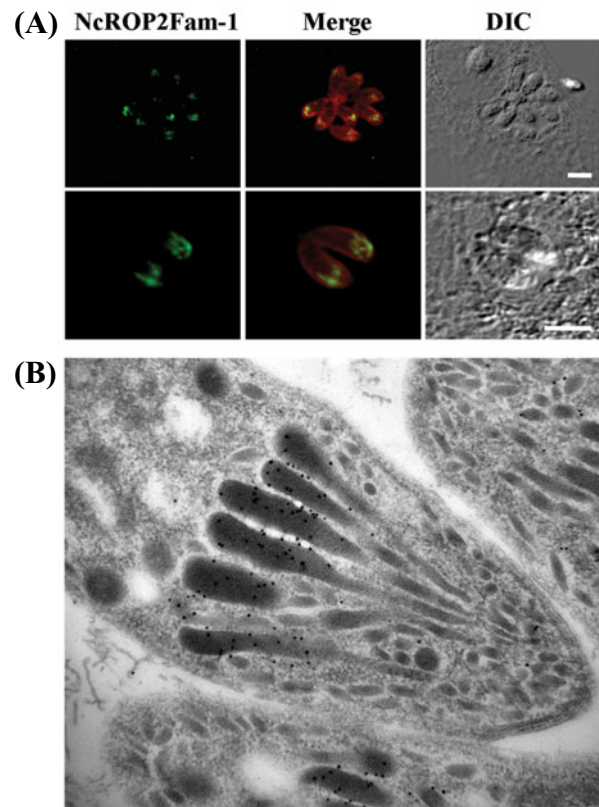


Fig. 3. NcROP2Fam-1 is a rhoptry protein associated with rhoptry bulbs. (A) Confocal laser scanning microscopy. NcROP2Fam-1 was detected in a double staining indirect immunofluorescence experiment in fixed and permeabilized infected cells. Primary antibodies used were α -P2 (NcROP2Fam-1; green) and α -*Neospora* whole extract (red in Merge pictures). The images show a unique plane. DIC: differential interference contrast images. Scale bars = 5 μ m; (B) Transmission electron microscopy. Immunogold staining of NcROP2Fam-1 in *N. caninum*-infected HFF cells was performed using affinity-purified α -P2 primary Ab and a colloidal gold-conjugated secondary Ab. A longitudinal section of a parasite (only the apical end shown) is presented. Average gold particles diameter = 10 nm.

and therefore that only adherent, but not already invaded, parasites were accessible to antibodies (Fig. 4A). The labelling on the parasite pictured presents a truncation at the anterior end, where it already has penetrated the host cell; this indicates that the parasite membrane was also impermeant to antibodies and that NcROP2Fam-1 is indeed on its surface. The small number of parasites we detected per slide is most certainly due to the fact that invasion is known to process rapidly and therefore most parasites were already within the host cells at 5 min p.i. After 5 min p.i., tachyzoites were not detected anymore without permeabilization, indicating that they all had completely invaded the host cells (data not shown), suggesting that the parasites that were labelled with NcROP2Fam-1 antibodies at 5 min p.i. were viable and not arrested in the adhesion phase.

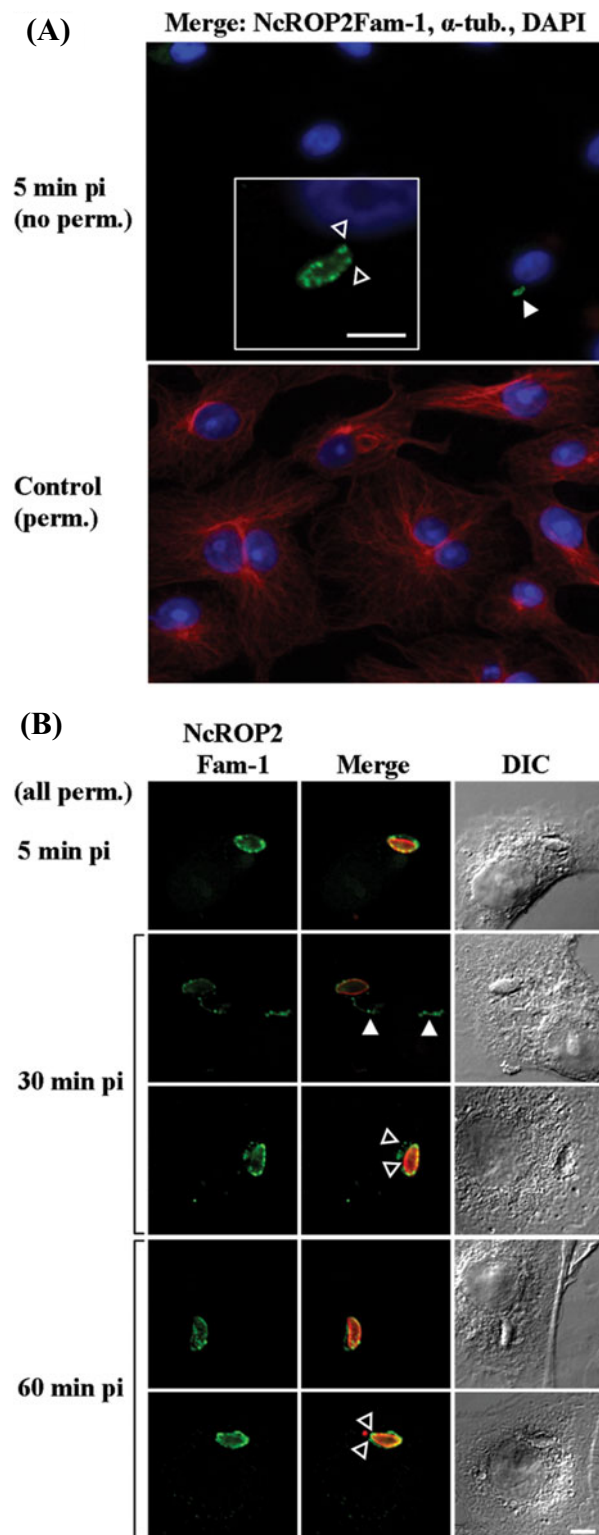


Fig. 4. NcROP2Fam-1 is a secreted rhoptry protein that associates with the PVM and the surface of invaded and adherent parasites. Freshly purified tachyzoites were left to invade Vero cells for 3 min and non-adherent parasites were washed away. After addition of pre-heated culture medium, preparations were returned to the incubator and infection was left to proceed for times ranging from 5 min to 24 h. Preparations were fixed and processed for double-staining IF analysis without (no perm.) or with prior permeabilization (perm.). For simplification purposes the times pi indicated omit the 3 min during which parasites

in permeabilized preparations, antibodies strongly labelled the newly formed PV (Fig. 4B). In addition, NcROP2Fam-1 was also observed as punctuations associated with cytoplasmic filaments that we identified as evacuoles (Hakansson *et al.* 2001; Saeij *et al.* 2006; Taylor *et al.* 2006; Turetzky *et al.* 2010) (Fig. 4B, filled arrowheads). At 30–60 min p.i., most parasites appeared closely associated with the host cell perinuclear region. In addition, NcROP2Fam-1-immunoreactive evacuoles were longer, sometimes branched, and most of them surrounded the host cell nucleus (not shown). On some occasions we clearly observed that NcROP2Fam-1 was not only detected on the nascent PVM, but also on the surface of intracellular parasites (Fig. 4, empty arrowheads). NcROP2Fam-1 staining intensity decreased progressively starting from 60–90 min p.i. and at 24 h p.i., the protein was exclusively distributed at the parasite apex, consistent with its localization in rhoptries (not shown).

Tachyzoites and bradyzoites express similar levels of NcROP2Fam-1

Neospora caninum bradyzoites were generated *in vitro* by growing parasites for 6 days in the presence of SNP added to the culture medium. Preparations of

were left in contact with cells. (A) NcROP2Fam-1 is present on the parasite surface of some adherent *Neospora caninum* tachyzoites. The following primary antibodies and appropriate Alexa Fluor-labelled secondary Abs were used: 12G10, a monoclonal Ab reacting against a broad range of alpha-tubulins (α tub., red) was used to check the integrity of the host cell membrane in the absence of permeabilization and α -P2 Ab (green) was used to stain NcROP2Fam-1. Nuclei were counterstained with DAPI. Only the merged (3-colours) pictures are presented. Top picture: no permeabilization prior to staining. The filled arrowhead points towards an adherent parasite coated with NcROP2Fam-1. A higher magnification view of the parasite is shown in the box. Note the truncated aspect of the extracellular NcROP2Fam-1 staining in the apical region (empty arrowheads), indicating that (i) this adherent parasite was actively invading the host cell when invasion was arrested by fixation and (ii) the parasite body was itself impermeant to antibodies. Bottom: a permeabilized control slide was processed in parallel to check the efficiency of alpha-tubulin staining by 12G10 mAb (red). Scale bar = 5 μ m; (B) NcROP2Fam-1 is present on the PVM, in evacuoles and on the surface of intracellular parasites after invasion. Images were taken using a laser scanning confocal microscope showing a unique plane. NcROP2Fam-1 was detected with α -P2 Ab (green) and α -SAG1 was used to stain the parasites (red in Merge panel) after permeabilization. DIC images are presented on the left. Filled arrowheads: staining of evacuoles; empty arrowheads: staining of both the PVM and the parasite surface. Scale bars = 5 μ m.

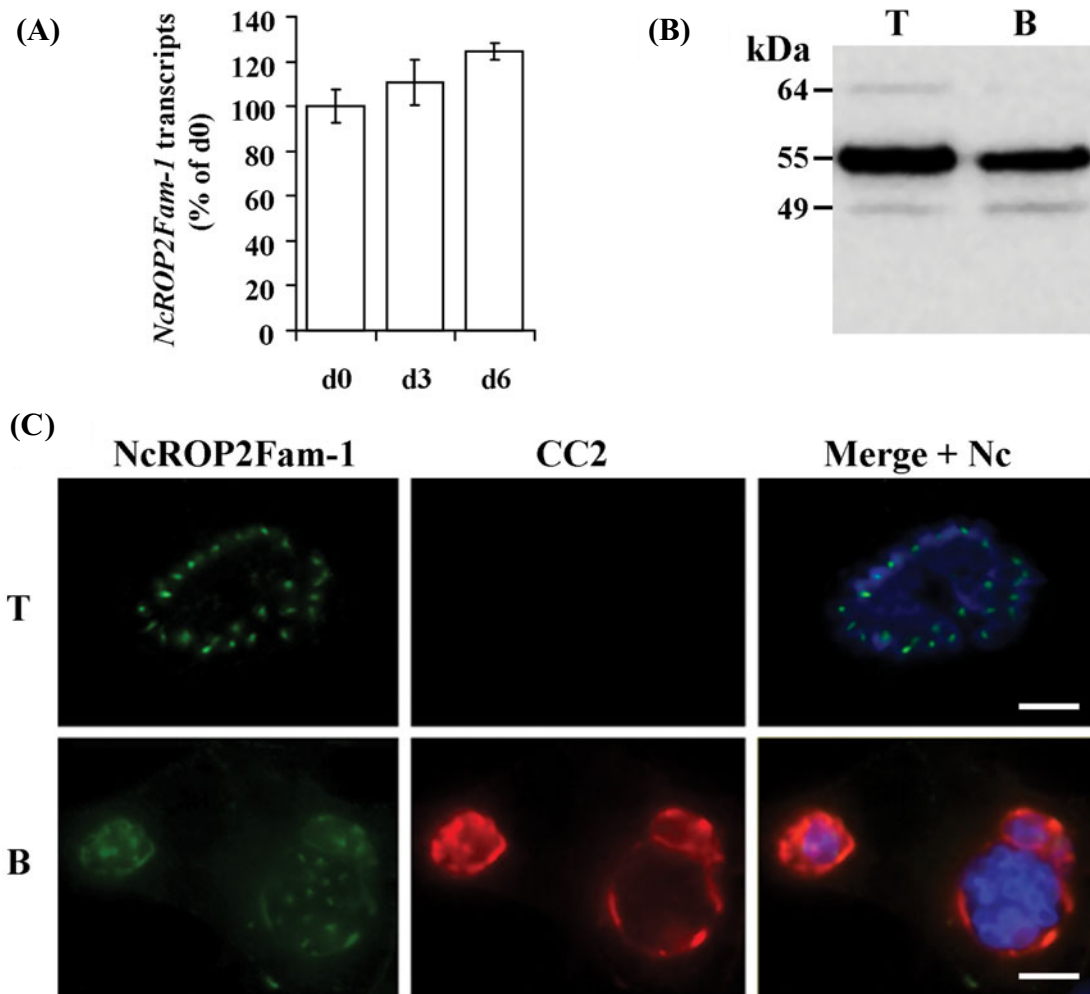


Fig. 5. NcROP2Fam-1 is expressed by bradyzoites and accumulates in the cyst wall of 'cysts' produced *in vitro*. (A) Quantitative RT-PCR. Total RNA was isolated from purified parasites at days (d) 0, 3 and 6 of a tachyzoite to bradyzoite conversion time-course. NcROP2Fam-1 steady state levels were determined by real-time RT-PCR and values were normalized to *Neospora* alpha-tubulin. Results were expressed as the mean percentage of the value obtained at d0 (tachyzoites) \pm s.d. (assays were carried out in triplicate and each one with triplicate PCR reactions); (B) Western blot analysis. Affinity-purified α -P2 antibodies were used to probe NcROP2Fam-1 in lysates of $\sim 5 \times 10^5$ parasites purified from untreated Vero cells (T; tachyzoite culture conditions) or from SNP-treated Vero cells (B; d6 of bradyzoite culture conditions). Apparent MWs are indicated on the left; (C) IF analysis. *Neospora caninum* were cultured in untreated Vero cells (T; d0) or in SNP-treated cells (B; d6) and intracellular parasites were then analysed by indirect IF after fixation and permeabilization. Primary antibodies were: α -P2 affinity-purified polyclonal Ab (NcROP2Fam-1; green), a mAb directed against a cyst-specific antigen (CC2; red) and a rabbit antiserum directed against *N. caninum* crude extract (Nc; blue in Merge panel). Image acquisition was performed with identical exposure time for bradyzoite and tachyzoite stages. Scale bar = 10 μ m.

tachyzoites and bradyzoites were split into 2 aliquots each. The first aliquots of infected cells were used for IF experiments. Free parasites were purified from the second aliquots and were used for controlling the tachyzoite to bradyzoite stage conversion by IF, for the assessment of *NcROP2Fam-1* levels by real-time RT-PCR and for Western blot experiments.

The efficiency of the stage conversion was controlled at day (d) 6 by checking the expression of NcBAG1 (a classical bradyzoite marker) in parasites isolated from the culture. Nearly 70% of individual d6 parasites displayed a stronger BAG1 staining than d0 parasites (tachyzoites), while *BAG1* transcripts increased by 15-fold (Fig. S1).

NcROP2Fam-1 transcripts in tachyzoites and bradyzoites were quantified by real-time RT-PCR. *NcROP2Fam-1* steady-state levels were very similar in tachyzoites (d0), at d3 of stage conversion and in cultures containing mainly bradyzoites (d6) (Fig. 5A), indicating that *NcROP2Fam-1* is not a gene with a stage-specific pattern of transcription. Using the same approach we could show that *NcROP2Fam-2* is also transcribed in both tachyzoites and bradyzoites, but appears to be 2-to3-fold more expressed in d6 bradyzoites than in d0 tachyzoites (Fig. S4B).

Western blots of lysates prepared from purified tachyzoites (d0) and from d6 bradyzoites indicated

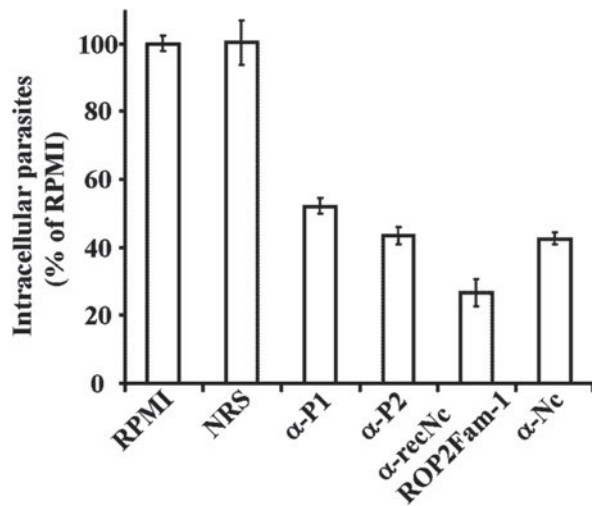


Fig. 6. Antibodies raised against unique peptides of NcROP2Fam-1 partially neutralize invasion *in vitro*. Dilutions of antibodies (1:100) in medium were tested for their ability to block parasite invasion. Freshly isolated *Neospora caninum* tachyzoites were incubated in the presence of medium alone (RPMI), NRS, affinity-purified antibodies against unique, NcROP2Fam-1-derived peptides (α -P1 and α -P2; Fig. S2A and B – in Online version only) or against the whole PK-L domain (α -recNcROP2Fam-1) or antibodies against a whole *N. caninum* extract (Nc). Parasites were then used to infect HFF cells and the amount of invaded, intracellular parasites was determined by real-time PCR using *Neospora*-specific primers. Results were expressed as the mean percentage of the value obtained for RPMI alone \pm s.d. (triplicate PCR reactions). These experiments were done 3 times with a virtually identical outcome, and 1 representative result is shown.

that both stages expressed the two major forms (55 and 49 kDa) of mature NcROP2Fam-1 (Fig. 5B).

Next, we compared by IF the localization of NcROP2Fam-1 in infected cells cultured in the presence of SNP for 6 days (bradyzoite conditions) to its localization in infected cells grown in tachyzoite conditions (no SNP, 48 h p.i.). NcROP2Fam-1 staining was observed in the rhoptries of all intracellular parasites, irrespective of the culture conditions. We also noticed that NcROP2Fam-1 staining was much more prominent in d6 cysts (bradyzoite culture) than in PVs (tachyzoite culture; staining not visible with the exposure settings in Fig. 5C). NcROP2Fam-1 and the bradyzoite-specific CC2-reactive cyst wall antigen are both found at the periphery of cysts (Fig. 5C).

Selected specific anti-peptide antibodies directed against NcROP2Fam-1 partially neutralize host cell invasion in vitro

In a previous study from our group (Debache *et al.* 2008), incubation of *Neospora* tachyzoites in the presence of antibodies against rec-NcROP2Fam-1

significantly reduced invasion *in vitro*, thus suggesting that NcROP2Fam-1 may have a previously unsuspected function in adhesion and/or invasion and that it may also be accessible to antibodies. Since rec-NcROP2Fam-1 likely shares common epitopes with other ROP2 family members in *Neospora* (Fig. S3A), the neutralization effect observed could possibly have been due to recognition of a cross-reacting antigen on the parasite. We therefore tested whether anti-peptide antibodies prepared against unique regions of NcROP2Fam-1 (α -P1 and α -P2) would also inhibit invasion *in vitro*.

No reduction of invasion was observed when tachyzoites were pre-incubated with normal rabbit serum (NRS) in RPMI medium. In contrast, pre-incubation of parasites with α -P1 or α -P2 reduced invasion by 46% and 58%, respectively. Likewise, invasion was also significantly reduced by 72% or 58% with α -recNcROP2Fam-1 or with α -Nc Ab, an anti-serum against *N. caninum* whole extract, respectively (Fig. 6). Altogether these results demonstrate that antibodies directed against specific NcROP2Fam-1-epitopes can partially neutralize invasion *in vitro*.

DISCUSSION

In *T. gondii*, the ROP2 family of rhoptry proteins was initially described as a family of 16 proteins sharing a number of features with the ROP2 prototype member (El Hajj *et al.* 2006); yet no protein of this family has so far been characterized in the related genus *Neospora*. Using a reverse genetics approach, we identified and cloned a cDNA encoding a ROP2 family member in *N. caninum*. The cDNA sequence was in perfect agreement with the original NCLIV_001970 in ToxoDB v. 7.1 (Kissinger *et al.* 2003; Gajria *et al.* 2008). The NCLIV_001970 deduced primary amino-acid sequence showed most significant homology to NCLIV_001950, an expressed, tandemly arranged gene on *Neospora* chromosome Ia, and to a lesser extent to *Toxoplasma* rhoptry proteins (ROP2, 4, 7, 8 and 18). It was also surprising to notice that apparently *Neospora* does not possess a *ROP18* gene, hence *NcROP18* is pseudogenized, as recently demonstrated by Reid *et al.* (2012). In addition, within the same clade only two genes (*NcROP2Fam-1* and *NcROP2Fam-2*) were found in *Neospora*, whereas *Toxoplasma* has a set of four to five (*TgROP2* (a/b), 4, 7 and 8). These differences may reflect a degree of redundancy in the functions of *Toxoplasma* proteins or could contribute to different strategies of adaptation of the two species in their respective hosts (Reid *et al.* 2012). The predicted NcROP2Fam-1 protein possesses the hallmarks of ROP2 family proteins (El Hajj *et al.* 2006), each of which will be further discussed. In the N-terminal moiety of the predicted NcROP2Fam-1 we found a potential signal peptide, as well as an approximate match (SWLQ) and a perfect match (SWDD) to the

SΦx(E/D) consensus for the TgSUB2 maturase (Bradley and Boothroyd, 1999; Miller *et al.* 2003; Hajagos *et al.* 2011), suggesting that NcROP2Fam-1 might be synthesized as a pre-pro-protein. The N-terminal moiety of NcROP2Fam-1 also contained an RAH domain made out of three R-rich regions and a serine/threonine protein kinase-like (PK-L) domain.

Due to the high overall homology of the NcROP2Fam-1 PK-L domain with those of TgROP2 and TgROP8, for which the structure has been established (Labesse *et al.* 2009; Qiu *et al.* 2009), we anticipate that the PK-L domain of NcROP2Fam-1 certainly also adopts the kinase fold. Unlike TgROP18, the only ROP2 family protein with a demonstrated kinase activity (El Hajj *et al.* 2007b) and similar to most other members of the ROP2 family in *Toxoplasma* (El Hajj *et al.* 2006), NcROP2Fam-1 lacks essential, conserved residues present within the catalytic core of classical kinases (Hanks and Hunter, 1995). NcROP2Fam-1 can therefore be qualified as a pseudokinase (Boudeau *et al.* 2006). However, it would be difficult to make any assumption as to whether NcROP2Fam-1 might nevertheless have a kinase activity since a number of pseudokinases, such as WNKs (with-no-lysine (K)) or CASK (Ca²⁺/calmodulin-dependent serine kinase) have evolved alternative ways of binding ATP and performing the phosphoryl transfer reaction (Xu *et al.* 2000; Mukherjee *et al.* 2008).

In order to proceed with the characterization of NcROP2Fam-1, it was necessary to obtain specific antibodies that would not cross-react with e.g. other ROP2 family members. The selection process we used in choosing unique regions of NcROP2Fam-1 for the generation of specific anti-peptide antibodies is fully detailed in the Materials and Methods section. The fact that both anti-NcROP2Fam-1 anti-peptide antibodies (α -P1 and α -P2) recognized the same patterns in Western blot and immunolocalization (IF and TEM) experiments provides strong evidence that our selection strategy was successful.

Most rhoptry proteins studied are synthesized as pre-pro-proteins (Sadak *et al.* 1988; Bradley and Boothroyd, 1999; Carey *et al.* 2004; El Hajj *et al.* 2006, 2007b; Turetzky *et al.* 2010; Hajagos *et al.* 2011). The signal peptide is cleaved as soon as the precursor enters the secretory pathway; however, the removal of the pro-domain occurs much later, within the nascent rhoptries (Soldati *et al.* 1998).

Western blot analysis of purified tachyzoite lysates with three different antibodies raised against the C-terminal moiety of the protein revealed that at least two N-terminal processing events must occur following the synthesis of the NcROP2Fam-1 precursor. A faint band of 64 kDa was observed, the size of which was compatible with the predicted pro-NcROP2Fam-1. In addition, we observed two additional bands of 55 and 49 kDa (the 55 kDa band being prominent), indicating a further maturation of

pro-NcROP2Fam-1. TgSUB2, a subtilisin-like protease present in rhoptry bulbs, is viewed as the most likely maturase candidate for N-terminal maturation of rhoptry proteins (Miller *et al.* 2003). In earlier studies, it was shown that the cleavage occurs at SΦxE sites on rhoptry proteins (Bradley and Boothroyd, 1999; Miller *et al.* 2003) and that mutations at the P1 position of the cleavage site (E in SΦxE) had a deleterious effect on the processing (Bradley *et al.* 2002; Miller *et al.* 2003; Turetzky *et al.* 2010). However, a recent study by Hajagos *et al.* (2011) showed that the P1 site could accommodate a conservative E to D substitution, thus re-defining the TgSUB2 consensus as SΦx(E/D). In NcROP2Fam-1, we found a perfect match to the cleavage consensus (SWDD (aa 39–42)) at a position not conserved in ROP2 family proteins and a poorer match (SWLQ (aa 82–85)) at a conserved position, but with a negatively charged (E) to neutral (Q) substitution at the P1 site that would likely impair cleavage. Remarkably, neither the 55 nor the 49 kDa bands that we observed in Western blots are compatible with a maturation of NcROP2Fam-1 at any of the above-mentioned sites (the expected sizes would be 62.5 and 58 kDa). We therefore conclude that the processing of pro-NcROP2Fam-1 in *Neospora* involves a protease with a different substrate specificity than that of TgSUB2. The bands we observed also do not fit with the yet unidentified rhoptry protein maturase acting at RAMA1-like sites (SxL) in *T. gondii* (Hajagos *et al.* 2011). We therefore cannot determine the exact locations of the two maturation events that take place in pro-NcROP2Fam-1. In lysates of infected cells, additional bands of 30–40 kDa, which were not present in lysates of cell-free, purified parasites, were detected. This indicates that NcROP2Fam-1 may be subjected to a variety of additional proteolytic activities once it has been secreted by the parasites.

In eukaryotic cells, sorting of integral proteins to subcellular organelles involves conserved mechanisms mediated by cytoplasmic adaptor complexes (APs), which recognize short motifs, usually either tyrosine-based (YxxΦ) or dileucine-based (LL), exposed on the cytoplasmic tail of the cargo (Bonifacino and Lippincott-Schwartz, 2003; Robinson, 2004). *Toxoplasma* rhoptry proteins are also sorted through the secretory pathway (Joiner and Roos, 2002; Sheiner and Soldati-Favre, 2008) using similar mechanisms. Indeed, it was shown that targeting of TgROP2 to the rhoptries is mediated by the clathrin/adaptor protein 1 (AP1) complex (Ngo *et al.* 2003). Likewise, a number of rhoptry-addressing signals have been identified either in the pro-region or in mature rhoptry proteins (Hoppe *et al.* 2000; Bradley and Boothroyd, 2001; Striepen *et al.* 2001). In the case of TgROP2, there is strong evidence that these rhoptry-addressing signals are tyrosine-based (YxxΦ) or dileucine-based (LL) (Hoppe *et al.* 2000; Ngo *et al.* 2003). Although NcROP2Fam-1 harbours

a non-canonical, most likely non-functional, tyrosine-based-like motif, it also possesses 7 LL motifs, one of which (aa 535–536) is conserved across most ROP2 family members and was shown to be involved in the targeting of TgROP2 to the rhoptries (Ngo *et al.* 2003). However, structural determination of PK-L domains of TgROP2 and TgROP8 has established that these domains do not contain any transmembrane helix (Labesse *et al.* 2009; Qiu *et al.* 2009), thus questioning the possibility of a direct interaction of the previously identified C-terminal sorting motifs (Hoppe *et al.* 2000; Ngo *et al.* 2003) with cytosolic APs. Interestingly, in *P. falciparum* most rhoptry proteins are not integral proteins with a cytoplasmic tail but they are nonetheless targeted to the rhoptries (Kats *et al.* 2006). In *Plasmodium*, RAP1 (Rhoptry Associated Protein 1) is first directed to the rhoptries via its interaction with the glycosylphosphatidylinositol-anchored RAMA1 (Rhoptry Associated Membrane Antigen 1), which in turn interacts with components of the trafficking machinery, possibly via a transmembrane escorter (Richard *et al.* 2009). Such a complex scaffolding mechanism may also exist for members of the ROP2 family in *Toxoplasma* and *Neospora*.

We confirmed by IF and TEM that NcROP2Fam-1 indeed belongs to the set of rhoptry proteins. NcROP2Fam-1 was found in the subapical region of free or intracellular parasites and was associated with rhoptry bulbs, consistent with the findings of other ultrastructural localization studies of ROP2 family proteins in *T. gondii* (Sadak *et al.* 1988; Saffer *et al.* 1992; Soldati *et al.* 1998; Lee *et al.* 2001; Carey *et al.* 2004; Taylor *et al.* 2006; Sloves *et al.* 2012).

The invasion of a cell by *T. gondii* is accompanied by a rapid discharge of the contents of rhoptries that is concomitant with the formation of the PV. The trigger for the secretion is presently unknown but it is widely accepted that it involves an interaction between the parasite apex and one or more cellular receptor(s). During the secretion process, RONs serve as ducts that direct the contents of the rhoptries towards an opening at the apex of parasites (Nichols *et al.* 1983; Porchet-Hennere and Nicolas, 1983; Dubremetz *et al.* 1993; Carruthers and Sibley, 1997; Alexander *et al.* 2005; Boothroyd and Dubremetz, 2008). Upon secretion, ROP proteins either remain in the lumen of the PV, associate with the PVM, or are injected into the host cell cytoplasm and may then reach further locations e.g. the host cell nucleus (Hakansson *et al.* 2001; Carey *et al.* 2004; Hajj *et al.* 2006; Saeij *et al.* 2006; Taylor *et al.* 2006; El Hajj *et al.* 2007a; Turetzky *et al.* 2010). We detected NcROP2Fam-1 on the surface of intracellular parasites, within the nascent PVM and cysts, and antibodies also stained weakly the PVM of mature vacuoles. This indicates that the protein is secreted and is able to bind a variety of biological membranes.

It was recently shown that the RAH domain of ROP2 family members is composed of R-rich, amphipathic helices that individually confer rhoptry proteins the property to associate with membranes and act in concert to bind preferentially to the PVM (Labesse *et al.* 2009; Reese and Boothroyd, 2009). An RAH domain composed of three R-rich regions was found in NcROP2Fam-1. In NcROP2Fam-1, the amphipathic characteristics of the α -helices predicted within R-rich regions 1–3 were not as obvious as with *Toxoplasma* ROP2 family proteins. In fact, only the predicted α -helices within R-rich 2-R-rich 3 clearly appeared amphipathic. Interestingly, whereas each region can individually bind cellular membranes, R-rich 2 is the main determinant of the preferential association with the PVM (Reese and Boothroyd, 2009).

By Western blot analysis, we observed that the processing of pro-NcROP2Fam-1 led to 2 mature proteins of 55 and 49 kDa, predicted to have retained either the whole RAH domain or only R-rich 3, respectively. It would be of interest to test which form(s) of mature NcROP2Fam-1 can actually associate with membranes and if the short, 49 kDa mature NcROP2Fam-1, having lost R-rich 2, possesses a skewed membrane selectivity compared with the 55 kDa protein.

NcROP2Fam-1 was also found on intracytoplasmic ribbon-like structures in the host cell. We identified these structures as being evacuoles since they were similar to the evacuoles observed with other rhoptry proteins in the absence of treatment by cytochalasin D (Hakansson *et al.* 2001; Saeij *et al.* 2006; Taylor *et al.* 2006; Turetzky *et al.* 2010). The parasite migration towards the host cell nucleus followed the growth of evacuoles in the direction of the perinuclear region, suggesting that NcROP2Fam-1 may play a role in parasite migration or in the establishment of the PV in the vicinity of the host cell nucleus. Finally, and certainly most intriguing, was the fact that NcROP2Fam-1 was also detected on the surface of extracellular, adherent tachyzoites that had partially invaded the host cell, as well as on the surface of intracellular parasites. To the best of our knowledge, this is the first time a rhoptry protein is observed on the surface of tachyzoites at the time of entry and immediately after invasion of the host cell. Rhoptry protein secretion takes place exclusively in the apical region of the parasite and is triggered by contact with a host cell (Joiner and Roos, 2002). In this context, it is likely that some of the NcROP2Fam-1 proteins exocytosed during the secretion burst that follows adhesion to the host cells bind to the parasite membrane in a fashion reminiscent of *T. gondii* micronemal proteins MIC2 (Carruthers *et al.* 1999, 2000) and MIC3 (Garcia-Reguet *et al.* 2000), both of which are exocytosed at the parasite apex but redistribute to the whole surface of the parasite body.

Since similar levels of NcROP2Fam-1 transcripts were found in tachyzoites and bradyzoites, transcription of the *NcROP2Fam-1* gene is most certainly not developmentally regulated in these stages. We also showed that tachyzoites and bradyzoites express the same forms of NcROP2Fam-1 proteins. NcROP2Fam-1 IF labelling of the nascent PVM was always strong shortly after invasion but rapidly fell at levels close to the detection threshold past 90 min p.i., thus requiring much longer exposure times. The protein could not usually be detected on the PVM of older vacuoles. The decrease of NcROP2Fam-1 staining intensity associated with the PVM that we observed over time has also been shown for *T. gondii* rhoptry proteins in the hours following invasion. It was usually attributed to protein turnover and to the dilution of PVM-bound ROP proteins consequent to the expansion of the PV surface as the vacuole grows. Although staining of the PVM fell below detectable levels past 90 min p.i., NcROP2Fam-1-labelling reappeared as punctuations on the PVM of a few mature vacuoles containing a few parasites (tachyzoite growth conditions), but was readily visible on cyst walls (bradyzoites). Taken together, these observations strongly suggest that a continuous secretion of NcROP2Fam-1 by intracellular parasites still takes place within the PV and the bradyzoite-containing cysts. The stronger staining intensity observed in cysts may be due to a higher affinity of NcROP2Fam-1 for cyst wall components and/or to a difference in protein secretion rate or turnover between these stages. We propose that the few mature PV that showed some NcROP2Fam-1 staining in tachyzoite culture conditions belonged to vacuoles containing parasites having acquired some bradyzoite features.

The region of NcROP2Fam-1 including the PK-like domain and the C-terminal tail that was bacterially expressed as the recNcROP2Fam-1 recombinant protein appears to play an unsuspected role in the invasion process. Indeed, the recombinant protein itself (Debache *et al.* 2008) and this work) and antibodies directed against recNcROP2Fam-1-derived peptides (this work) partially neutralized *N. caninum* tachyzoite host cell invasion *in vitro*. This observation provides further support that the protein may be accessible on the surface of parasites during the invasion process. RecNcROP2Fam-1 is an efficient antigen against cerebral infection by *N. caninum* in adult mice and against a vertical transmission of the infection from the mother to the offspring (Debache *et al.* 2008, 2009, 2010). Classically, Th1 responses are elicited against intracellular antigens while Th2 responses are elicited against extracellular antigens. In all vaccination studies in mouse, recNcROP2Fam-1 induced predominantly either IgG2a (Th1-biased) or IgG1 (Th2-biased) Abs, depending on the adjuvant used but, nevertheless, the type of response elicited did not

affect the protectivity of the antigen against lethal challenge. This indicates that the protective effects of recNcROP2Fam-1 can be attributed to a combination of cellular (Th1) and humoral (Th2) responses.

We have demonstrated that highly immunogenic NcROP2Fam-1-specific peptides (P1 and P2), displaying no cross-reactivity with mammalian cells, could be used to produce antibodies specific to NcROP2Fam-1 that inhibit host cell invasion *in vitro*. This suggests that peptides P1 and P2, as well as yet-to-be-discovered similar peptides, could be included in future experimental vaccine formulations. In addition, NcROP2Fam-2, which is also transcribed in tachyzoites and bradyzoites, should be investigated for its potential role as a vaccine candidate, either alone or synergistically with NcROP2Fam-1.

ACKNOWLEDGEMENTS

We are thankful to J.-F. Dubremetz for helpful discussions regarding the interpretation of our TEM data. D. Williams and A. J. Trees (University of Liverpool) are gratefully acknowledged for providing the Nc-Liverpool isolate. We are indebted to W. Bohne and U. Gross (University of Göttingen, Germany) for providing mAb CC2 and to M. McAllister (University of Adelaide, Australia) for the gift of α -BAG1 Ab. The 12G10 mAb developed by J. Frankel and E. M. Nelsen was obtained from the Developmental Studies Hybridoma Bank developed under the auspices of the NICHD and maintained by The University of Iowa, Department of Biology, Iowa City, IA 52242, USA.

FINANCIAL SUPPORT

This study was supported by the Vetsuisse Faculty (University of Bern) and the Swiss National Science Foundation (A.H., grant number 31-127374).

REFERENCES

- Alexander, D. L., Mital, J., Ward, G. E., Bradley, P. and Boothroyd, J. C. (2005). Identification of the moving junction complex of *Toxoplasma gondii*: a collaboration between distinct secretory organelles. *PLoS Pathogens* **1**, e17. doi: 10.1371/journal.ppat.0010017.
- Ausubel, F. M., Brent, R., Kingston, R. E., Moore, D. D., Seidman, J. G., Smith, J. A. and Struhl, K. (1997). *Current Protocols in Molecular Biology*. John Wiley & Sons, Somerset, NJ, USA.
- Beckers, C. J., Dubremetz, J. F., Mercereau-Puijalon, O. and Joiner, K. A. (1994). The *Toxoplasma gondii* rhoptry protein ROP 2 is inserted into the parasitophorous vacuole membrane, surrounding the intracellular parasite, and is exposed to the host cell cytoplasm. *Journal of Cell Biology* **127**, 947–961. doi: 10.1083/jcb.127.4.947.
- Besteiro, S., Michelin, A., Poncet, J., Dubremetz, J. F. and Lebrun, M. (2009). Export of a *Toxoplasma gondii* rhoptry neck protein complex at the host cell membrane to form the moving junction during invasion. *PLoS Pathogens* **5**, e1000309. doi:10.1371/journal.ppat.1000309.
- Bjorkman, C. and Hemphill, A. (1998). Characterization of *Neospora caninum* iscom antigens using monoclonal antibodies. *Parasite Immunology* **20**, 73–80. doi: 10.1046/j.1365-3024.1998.00127.x.
- Bonifacino, J. S. and Lippincott-Schwartz, J. (2003). Coat proteins: shaping membrane transport. *Nature Reviews Molecular Cell Biology* **4**, 409–414. doi: 10.1038/nrm1099.

- Boothroyd, J. C. and Dubremetz, J. F.** (2008). Kiss and spit: the dual roles of *Toxoplasma* rhoptries. *Nature Reviews Microbiology* **6**, 79–88. doi: 10.1038/nrmicro1800.
- Boudeau, J., Miranda-Saavedra, D., Barton, G. J. and Alessi, D. R.** (2006). Emerging roles of pseudokinases. *Trends in Cell Biology* **16**, 443–452. doi: 10.1016/j.tcb.2006.07.003.
- Bradley, P. J. and Boothroyd, J. C.** (1999). Identification of the premature processing site of *Toxoplasma* ROP1 by mass spectrometry. *Molecular and Biochemical Parasitology* **100**, 103–109. doi: 10.1016/S0166-6851(99)00035-3.
- Bradley, P. J. and Boothroyd, J. C.** (2001). The pro region of *Toxoplasma* ROP1 is a rhoptry-targeting signal. *International Journal for Parasitology* **31**, 1177–1186. doi: 10.1016/S0020-7519(01)00242-9.
- Bradley, P. J., Hsieh, C. L. and Boothroyd, J. C.** (2002). Unprocessed *Toxoplasma* ROP1 is effectively targeted and secreted into the nascent parasitophorous vacuole. *Molecular and Biochemical Parasitology* **125**, 189–193. doi: 10.1016/S0166-6851(02)00162-7.
- Bradley, P. J., Ward, C., Cheng, S. J., Alexander, D. L., Collier, S., Coombs, G. H., Dunn, J. D., Ferguson, D. J., Sanderson, S. J., Wastling, J. M. and Boothroyd, J. C.** (2005). Proteomic analysis of rhoptry organelles reveals many novel constituents for host–parasite interactions in *Toxoplasma gondii*. *Journal of Biological Chemistry* **280**, 34245–34258. doi: 10.1074/jbc.M504158200.
- Carey, K. L., Jongco, A. M., Kim, K. and Ward, G. E.** (2004). The *Toxoplasma gondii* rhoptry protein ROP4 is secreted into the parasitophorous vacuole and becomes phosphorylated in infected cells. *Eukaryotic Cell* **3**, 1320–1330. doi: 10.1128/EC.3.5.1320-1330.2004.
- Carruthers, V. B. and Sibley, L. D.** (1997). Sequential protein secretion from three distinct organelles of *Toxoplasma gondii* accompanies invasion of human fibroblasts. *European Journal of Cell Biology* **73**, 114–123.
- Carruthers, V. B. and Tomley, F. M.** (2008). Microneme proteins in apicomplexans. *Subcellular Biochemistry* **47**, 33–45. doi: 10.1007/978-0-387-78267-6_2.
- Carruthers, V. B., Giddings, O. K. and Sibley, L. D.** (1999). Secretion of micronemal proteins is associated with *Toxoplasma* invasion of host cells. *Cellular Microbiology* **1**, 225–235. doi: 10.1046/j.1462-5822.1999.00023.x.
- Carruthers, V. B., Sherman, G. D. and Sibley, L. D.** (2000). The *Toxoplasma* adhesive protein MIC2 is proteolytically processed at multiple sites by two parasite-derived proteases. *Journal of Biological Chemistry* **275**, 14346–14353. doi: 10.1074/jbc.275.19.14346.
- Debache, K., Guionaud, C., Alaeddine, F., Mevissen, M. and Hemphill, A.** (2008). Vaccination of mice with recombinant NcROP2 antigen reduces mortality and cerebral infection in mice infected with *Neospora caninum* tachyzoites. *International Journal for Parasitology* **38**, 1455–1463. doi: 10.1016/j.ijpara.2008.04.001.
- Debache, K., Alaeddine, F., Guionaud, C., Monney, T., Müller, J., Strohbusch, M., Leib, S. L., Grandgirard, D. and Hemphill, A.** (2009). Vaccination with recombinant NcROP2 combined with recombinant NcMIC1 and NcMIC3 reduces cerebral infection and vertical transmission in mice experimentally infected with *Neospora caninum* tachyzoites. *International Journal for Parasitology* **39**, 1373–1384. doi: 10.1016/j.ijpara.2009.04.006.
- Debache, K., Guionaud, C., Alaeddine, F. and Hemphill, A.** (2010). Intraperitoneal and intra-nasal vaccination of mice with three distinct recombinant *Neospora caninum* antigens results in differential effects with regard to protection against experimental challenge with *Neospora caninum* tachyzoites. *Parasitology* **137**, 229–240. doi: 10.1017/S0031182009991259.
- Długonska, H.** (2008). *Toxoplasma* rhoptries: unique secretory organelles and source of promising vaccine proteins for immunoprevention of toxoplasmosis. *Journal of Biomedicine and Biotechnology* **2008**, 632424. doi: 10.1155/2008/632424.
- Dubremetz, J. F., Achbarou, A., Bermudes, D. and Joiner, K. A.** (1993). Kinetics and pattern of organelle exocytosis during *Toxoplasma gondii*/host-cell interaction. *Parasitology Research* **79**, 402–408.
- El Hajj, H., Demey, E., Poncet, J., Lebrun, M., Wu, B., Galeotti, N., Fourmaux, M. N., Mercereau-Puijalon, O., Vial, H., Labesse, G. and Dubremetz, J. F.** (2006). The ROP2 family of *Toxoplasma gondii* rhoptry proteins: proteomic and genomic characterization and molecular modeling. *Proteomics* **6**, 5773–5784. doi: 10.1002/pmic.200600187.
- El Hajj, H., Lebrun, M., Fourmaux, M. N., Vial, H. and Dubremetz, J. F.** (2007a). Inverted topology of the *Toxoplasma gondii* ROP5 rhoptry protein provides new insights into the association of the ROP2 protein family with the parasitophorous vacuole membrane. *Cellular Microbiology* **9**, 54–64. doi: 10.1111/j.1462-5822.2006.00767.x.
- El Hajj, H., Lebrun, M., Arold, S. T., Vial, H., Labesse, G. and Dubremetz, J. F.** (2007b). ROP18 is a rhoptry kinase controlling the intracellular proliferation of *Toxoplasma gondii*. *PLoS Pathogens* **3**, e14. doi: 10.1371/journal.ppat.0030014.
- Fentress, S. J., Behnke, M. S., Dunay, I. R., Mashayekhi, M., Rommereim, L. M., Fox, B. A., Bzik, D. J., Taylor, G. A., Turk, B. E., Lichti, C. F., Townsend, R. R., Qiu, W., Hui, R., Beatty, W. L. and Sibley, L. D.** (2010). Phosphorylation of immunity-related GTPases by a *Toxoplasma gondii*-secreted kinase promotes macrophage survival and virulence. *Cell Host and Microbe* **8**, 484–495. doi: 10.1016/j.chom.2010.11.005.
- Fentress, S. J., Steinfeldt, T., Howard, J. C. and Sibley, L. D.** (2012). The arginine-rich N-terminal domain of ROP18 is necessary for vacuole targeting and virulence of *Toxoplasma gondii*. *Cellular Microbiology* **14**, 1921–33.
- Fourmaux, M. N., Garcia-Reguet, N., Mercereau-Puijalon, O. and Dubremetz, J. F.** (1996). *Toxoplasma gondii* microneme proteins: gene cloning and possible function. *Current Topics in Microbiology and Immunology* **219**, 55–58.
- Gajria, B., Bahl, A., Brestelli, J., Dommer, J., Fischer, S., Gao, X., Heiges, M., Iodice, J., Kissinger, J. C., Mackey, A. J., Pinney, D. F., Roos, D. S., Stoeckert, C. J. Jr., Wang, H. and Brunk, B. P.** (2008). ToxoDB: an integrated *Toxoplasma gondii* database resource. *Nucleic Acids Research* **36**, D553–556. doi: 10.1093/nar/gkm981.
- Garcia-Reguet, N., Lebrun, M., Fourmaux, M. N., Mercereau-Puijalon, O., Mann, T., Beckers, C. J., Samyn, B., Van Beeumen, J., Bout, D. and Dubremetz, J. F.** (2000). The microneme protein MIC3 of *Toxoplasma gondii* is a secretory adhesin that binds to both the surface of the host cells and the surface of the parasite. *Cellular Microbiology* **2**, 353–364. doi: 10.1046/j.1462-5822.2000.00064.x.
- Gautier, R., Douguet, D., Antonny, B. and Drin, G.** (2008). HELIQUEST: a web server to screen sequences with specific alpha-helical properties. *Bioinformatics* **24**, 2101–2102. doi: 10.1093/bioinformatics/btn392.
- Gross, U., Bormuth, H., Gaissmaier, C., Dittrich, C., Krenn, V., Bohne, W. and Ferguson, D. J.** (1995). Monoclonal rat antibodies directed against *Toxoplasma gondii* suitable for studying tachyzoite-bradyzoite interconversion *in vivo*. *Clinical and Diagnostic Laboratory Immunology* **2**, 542–548.
- Guionaud, C., Hemphill, A., Mevissen, M. and Alaeddine, F.** (2010). Molecular characterization of *Neospora caninum* MAG1, a dense granule protein secreted into the parasitophorous vacuole, and associated with the cyst wall and the cyst matrix. *Parasitology* **137**, 1605–1619. doi: 10.1017/S0031182010000442.
- Hajagos, B. E., Turetzky, J. M., Peng, E. D., Cheng, S. J., Ryan, C. M., Souda, P., Whitelegge, J. P., Lebrun, M., Dubremetz, J. F. and Bradley, P. J.** (2011). Molecular dissection of novel trafficking and processing of the *T. gondii* rhoptry metalloprotease Toxolysin-1. *Traffic* **13**, 292–304.
- Hajj, H. E., Lebrun, M., Fourmaux, M. N., Vial, H. and Dubremetz, J. F.** (2006). Characterization, biosynthesis and fate of ROP7, a ROP2 related rhoptry protein of *Toxoplasma gondii*. *Molecular and Biochemical Parasitology* **146**, 98–100. doi: 10.1016/j.molbiopara.2005.10.011.
- Hakansson, S., Charron, A. J. and Sibley, L. D.** (2001). *Toxoplasma* evacuoles: a two-step process of secretion and fusion forms the parasitophorous vacuole. *EMBO Journal* **20**, 3132–3144. doi: 10.1093/emboj/20.12.3132.
- Hanks, S. K. and Hunter, T.** (1995). Protein kinases 6. The eukaryotic protein kinase superfamily: kinase (catalytic) domain structure and classification. *FASEB Journal* **9**, 576–596.
- Hemphill, A. and Gottstein, B.** (1996). Identification of a major surface protein on *Neospora caninum* tachyzoites. *Parasitology Research* **82**, 497–504. doi: 10.1007/s004360050152.
- Hemphill, A., Gottstein, B. and Kaufmann, H.** (1996). Adhesion and invasion of bovine endothelial cells by *Neospora caninum*. *Parasitology* **112** (Pt 2), 183–197. doi: 10.1017/S00311820090084754.
- Hemphill, A., Felleisen, R., Connolly, B., Gottstein, B., Hentrich, B. and Müller, N.** (1997). Characterization of a cDNA-clone encoding Nc-p43, a major *Neospora caninum* tachyzoite surface protein. *Parasitology* **115**, 581–590. doi: 10.1017/S0031182097001650.
- Hoppe, H. C., Ngo, H. M., Yang, M. and Joiner, K. A.** (2000). Targeting to rhoptry organelles of *Toxoplasma gondii* involves evolutionarily conserved mechanisms. *Nature Cell Biology* **2**, 449–456. doi: 10.1038/35017090.
- Huynh, M. H., Rabenau, K. E., Harper, J. M., Beatty, W. L., Sibley, L. D. and Carruthers, V. B.** (2003). Rapid invasion of host cells by *Toxoplasma* requires secretion of the MIC2-M2AP adhesive protein complex. *EMBO Journal* **22**, 2082–2090. doi: 10.1093/emboj/cdg217.
- Joiner, K. A. and Roos, D. S.** (2002). Secretory traffic in the eukaryotic parasite *Toxoplasma gondii*: less is more. *Journal of Cell Biology* **157**, 557–563. doi: 10.1083/jcb.200112144.

- Kats, L. M., Black, C. G., Proellocks, N. I. and Coppel, R. L. (2006). *Plasmodium* rhoptries: how things went pear-shaped. *Trends in Parasitology* **22**, 269–276. doi: 10.1016/j.pt.2006.04.001.
- Kissinger, J. C., Gajria, B., Li, L., Paulsen, I. T. and Roos, D. S. (2003). ToxoDB: accessing the *Toxoplasma gondii* genome. *Nucleic Acids Research* **31**, 234–236. doi: 10.1093/nar/gkg072.
- Labesse, G., Gelin, M., Bessin, Y., Lebrun, M., Papoin, J., Cerdan, R., Arold, S. T. and Dubremetz, J. F. (2009). ROP2 from *Toxoplasma gondii*: a virulence factor with a protein-kinase fold and no enzymatic activity. *Structure* **17**, 139–146. doi: 10.1016/j.str.2008.11.005.
- Lebrun, M., Michelin, A., El Hajj, H., Poncet, J., Bradley, P. J., Vial, H. and Dubremetz, J. F. (2005). The rhoptry neck protein RON4 re-localizes at the moving junction during *Toxoplasma gondii* invasion. *Cellular Microbiology* **7**, 1823–1833. doi: 10.1111/j.1462-5822.2005.00646.x.
- Lee, B. Y., Ahn, M. H., Kim, H. C. and Min, D. Y. (2001). *Toxoplasma gondii*: ultrastructural localization of specific antigens and inhibition of intracellular multiplication by monoclonal antibodies. *Korean Journal of Parasitology* **39**, 67–75. doi: 10.3347/kjp.2001.39.1.67.
- Li, L., Brunk, B. P., Kissinger, J. C., Pape, D., Tang, K., Cole, R. H., Martin, J., Wylie, T., Dante, M., Fogarty, S. J., Howe, D. K., Liberator, P., Diaz, C., Anderson, J., White, M., Jerome, M. E., Johnson, E. A., Radke, J. A., Stoeckert, C. J. Jr., Waterston, R. H., Clifton, S. W., Roos, D. S. and Sibley, L. D. (2003). Gene discovery in the apicomplexa as revealed by EST sequencing and assembly of a comparative gene database. *Genome Research* **13**, 443–454. doi: 10.1101/gr.693203.
- Marugán-Hernández, V., Alvarez-García, G., Tomley, F., Hemphill, A., Regidor-Cerrillo, J. and Ortega-Mora, L. M. (2011). Identification of novel rhoptry proteins in *Neospora caninum* by LC/MS-MS analysis of subcellular fractions. *Journal of Proteomics* **74**, 629–642.
- Matz, M., Shagin, D., Bogdanova, E., Britanova, O., Lukyanov, S., Diatchenko, L. and Chenchik, A. (1999). Amplification of cDNA ends based on template-switching effect and step-out PCR. *Nucleic Acids Research* **27**, 1558–1560. doi: 10.1093/nar/27.6.1558.
- McAllister, M. M., Parmley, S. F., Weiss, L. M., Welch, V. J. and McGuire, A. M. (1996). An immunohistochemical method for detecting bradyzoite antigen (BAG5) in *Toxoplasma gondii*-infected tissues cross-reacts with a *Neospora caninum* bradyzoite antigen. *Journal of Parasitology* **82**, 354–355. doi: 10.2307/3284181.
- Melo, M. B., Jensen, K. D. and Saeij, J. P. (2011). *Toxoplasma* effectors are master regulators of the inflammatory response. *Trends in Parasitology* **27**, 487–495.
- Mercier, C., Adjogble, K. D., Daubener, W. and Delauw, M. F. (2005). Dense granules: are they key organelles to help understand the parasitophorous vacuole of all apicomplexa parasites? *International Journal for Parasitology* **35**, 829–849. doi: 10.1016/j.ijpara.2005.03.011.
- Miller, S. A., Thathy, V., Ajioka, J. W., Blackman, M. J. and Kim, K. (2003). TgSUB2 is a *Toxoplasma gondii* rhoptry organelle processing proteinase. *Molecular Microbiology* **49**, 883–894. doi: 10.1046/j.1365-2958.2003.03604.x.
- Mordue, D. G., Desai, N., Dustin, M. and Sibley, L. D. (1999). Invasion by *Toxoplasma gondii* establishes a moving junction that selectively excludes host cell plasma membrane proteins on the basis of their membrane anchoring. *Journal of Experimental Medicine* **190**, 1783–1792. doi: 10.1084/jem.190.12.1783.
- Mukherjee, K., Sharma, M., Urlaub, H., Bourenkov, G. P., Jahn, R., Sudhof, T. C. and Wahl, M. C. (2008). CASK Functions as a Mg²⁺-independent neurexin kinase. *Cell* **133**, 328–339. doi: 10.1016/j.cell.2008.02.036.
- Müller, N., Vonlaufen, N., Gianinazzi, C., Leib, S. L. and Hemphill, A. (2002). Application of real-time fluorescent PCR for quantitative assessment of *Neospora caninum* infections in organotypic slice cultures of rat central nervous system tissue. *Journal of Clinical Microbiology* **40**, 252–255. doi: 10.1128/JCM.40.1.252-255.2002.
- Nakaar, V., Ngo, H. M., Aaronson, E. P., Coppens, I., Stedman, T. T. and Joiner, K. A. (2003). Pleiotropic effect due to targeted depletion of secretory rhoptry protein ROP2 in *Toxoplasma gondii*. *Journal of Cell Science* **116**, 2311–2320. doi: 10.1242/jcs.00382.
- Ngo, H. M., Hoppe, H. C. and Joiner, K. A. (2000). Differential sorting and post-secretory targeting of proteins in parasitic invasion. *Trends in Cell Biology* **10**, 67–72. doi: 10.1016/S0962-8924(99)01698-0.
- Ngo, H. M., Yang, M., Paprotka, K., Pypaert, M., Hoppe, H. and Joiner, K. A. (2003). AP-1 in *Toxoplasma gondii* mediates biogenesis of the rhoptry secretory organelle from a post-Golgi compartment. *Journal of Biological Chemistry* **278**, 5343–5352. doi: 10.1074/jbc.M208291200.
- Ngo, H. M., Yang, M. and Joiner, K. A. (2004). Are rhoptries in apicomplexan parasites secretory granules or secretory lysosomal granules? *Molecular Microbiology* **52**, 1531–1541. doi: 10.1111/j.1365-2958.2004.04056.x.
- Nichols, B. A., Chiappino, M. L. and O'Connor, G. R. (1983). Secretion from the rhoptries of *Toxoplasma gondii* during host-cell invasion. *Journal of Ultrastructure Research* **83**, 85–98. doi: 10.1016/S0022-5320(83)90067-9.
- Niedelman, W., Gold, D. A., Rosowski, E. E., Sprokholt, J. K., Lim, D., Farid Arenas, A., Melo, M. B., Spooner, E., Yaffe, M. B. and Saeij, J. P. (2012). The rhoptry proteins ROP18 and ROP5 mediate *Toxoplasma gondii* evasion of the murine, but not the human, interferon-gamma response. *PLoS Pathogen* **8**, e1002784.
- Odorico, M. and Pellequer, J. L. (2003). BEPITOPE: predicting the location of continuous epitopes and patterns in proteins. *Journal of Molecular Recognition* **16**, 20–22. doi: 10.1002/jmr.602.
- Peixoto, L., Chen, F., Harb, O. S., Davis, P. H., Beiting, D. P., Brownback, C. S., Ouloguem, D. and Roos, D. S. (2010). Integrative genomic approaches highlight a family of parasite-specific kinases that regulate host responses. *Cell Host and Microbe* **8**, 208–218. doi: 10.1016/j.chom.2010.07.004.
- Pernas, L. and Bothroyd, J. C. (2010). Association of host mitochondria in the parasitophorous vacuole during *Toxoplasma* infection is not dependent on rhoptry proteins ROP2/8. *International Journal for Parasitology* **40**, 1367–1371. doi: 10.1016/j.ijpara.2010.07.002.
- Peterson, E. L., Kondev, J., Theriot, J. A. and Phillips, R. (2009). Reduced amino acid alphabets exhibit an improved sensitivity and selectivity in fold assignment. *Bioinformatics* **25**, 1356–1362. doi: 10.1093/bioinformatics/btp164.
- Porchet-Hennere, E. and Nicolas, G. (1983). Are rhoptries of Coccidia really extrusomes? *Journal of Ultrastructure Research* **84**, 194–203. doi: 10.1016/S0022-5320(83)90130-2.
- Prlic, A., Domingues, F. S. and Sippl, M. J. (2000). Structure-derived substitution matrices for alignment of distantly related sequences. *Protein Engineering* **13**, 545–550. doi: 10.1093/protein/13.8.545.
- Qiu, W., Wernimont, A., Tang, K., Taylor, S., Lunin, V., Schapira, M., Fentress, S., Hui, R. and Sibley, L. D. (2009). Novel structural and regulatory features of rhoptry secretory kinases in *Toxoplasma gondii*. *EMBO Journal* **28**, 969–979. doi: 10.1038/emboj.2009.24.
- Reese, M. L. and Bothroyd, J. C. (2009). A helical membrane-binding domain targets the *Toxoplasma* ROP2 family to the parasitophorous vacuole. *Traffic* **10**, 1458–1470. doi: 10.1111/j.1600-0854.2009.00958.x.
- Regidor-Cerrillo, J., Álvarez-García, G., Pastor-Fernández, I., Marugán-Hernández, V., Gómez-Bautista, M. and Ortega-Mora, L. M. (2012). Proteome expression changes among virulent and attenuated *Neospora caninum* isolates. *Journal of Proteomics* **75**, 2306–2318.
- Reid, A. J., Vermont, S. J., Cotton, J. A., Harris, D., Hill-Cawthorne, G. A., Konen-Waisman, S., Latham, S. M., Mourier, T., Norton, R., Quail, M. A., Sanders, M., Shanmugam, D., Sohal, A., Wasmuth, J. D., Brunk, B., Grigg, M. E., Howard, J. C., Parkinson, J., Roos, D. S., Trees, A. J., Berriman, M., Pain, A. and Wastling, J. M. (2012). Comparative genomics of the Apicomplexan parasites *Toxoplasma gondii* and *Neospora caninum*: coccidia differing in host range and transmission strategy. *PLoS Pathogens* **8**, e1002567. doi: 10.1371/journal.ppat.1002567.
- Richard, D., Kats, L. M., Langer, C., Black, C. G., Mitri, K., Boddey, J. A., Cowman, A. F. and Coppel, R. L. (2009). Identification of rhoptry trafficking determinants and evidence for a novel sorting mechanism in the malaria parasite *Plasmodium falciparum*. *PLoS Pathogens* **5**, e1000328. doi: 10.1371/journal.ppat.1000328.
- Robinson, M. S. (2004). Adaptable adaptors for coated vesicles. *Trends in Cell Biology* **14**, 167–174. doi: 10.1016/j.tcb.2004.02.002.
- Sadak, A., Taghy, Z., Fortier, B. and Dubremetz, J. F. (1988). Characterization of a family of rhoptry proteins of *Toxoplasma gondii*. *Molecular and Biochemical Parasitology* **29**, 203–211.
- Saeij, J. P., Boyle, J. P., Collier, S., Taylor, S., Sibley, L. D., Brooke-Powell, E. T., Ajioka, J. W. and Bothroyd, J. C. (2006). Polymorphic secreted kinases are key virulence factors in toxoplasmosis. *Science* **314**, 1780–1783. doi: 10.1126/science.1133690.
- Saffer, L. D., Mercereau-Puijalon, O., Dubremetz, J. F. and Schwartzman, J. D. (1992). Localization of a *Toxoplasma gondii* rhoptry protein by immunoelectron microscopy during and after host cell penetration. *Journal of Protozoology* **39**, 526–530. doi: 10.1111/j.1550-7408.1992.tb04844.x.
- Schwartz, S., Zhang, Z., Frazer, K. A., Smit, A., Riemer, C., Bouck, J., Gibbs, R., Hardison, R. and Miller, W. (2000). PipMaker—a web server for aligning two genomic DNA sequences. *Genome Research* **10**, 577–586. doi: 10.1101/gr.10.4.577.
- Seeber, F. (1997). Consensus sequence of translational initiation sites from *Toxoplasma gondii* genes. *Parasitology Research* **83**, 309–311. doi: 10.1007/s004360050254.

- Sheiner, L. and Soldati-Favre, D.** (2008). Protein trafficking inside *Toxoplasma gondii*. *Traffic* **9**, 636–646. doi: 10.1111/j.1600-0854.2008.00713.x.
- Sinai, A. P. and Joiner, K. A.** (2001). The *Toxoplasma gondii* protein ROP2 mediates host organelle association with the parasitophorous vacuole membrane. *Journal of Cell Biology* **154**, 95–108. doi: 10.1083/jcb.200101073.
- Sloves, P. J., Delhaye, S., Mouveaux, T., Werkmeister, E., Slomianny, C., Hovasse, A., Dilezitoko Alayi, T., Callebaut, I., Gaji, R. Y., Schaeffer-Reiss, C., Van Dorsselear, A., Carruthers, V. B. and Tomavo, S.** (2012). *Toxoplasma* sortilin-like receptor regulates protein transport and is essential for apical secretory organelle biogenesis and host infection. *Cell Host and Microbe* **11**, 515–527. doi: 10.1016/j.chom.2012.03.006.
- Soldati, D., Lassen, A., Dubremetz, J. F. and Boothroyd, J. C.** (1998). Processing of *Toxoplasma* ROP1 protein in nascent rhoptries. *Molecular and Biochemical Parasitology* **96**, 37–48. doi: 10.1016/S0166-6851(98)00090-5.
- Solis, A. D. and Rackovsky, S.** (2000). Optimized representations and maximal information in proteins. *Proteins* **38**, 149–164. doi: 10.1002/(SICI)1097-0134(20000201)38:2<149::AID-PROT4>3.0.CO;2-#.
- Steinfeldt, T., Konen-Waisman, S., Tong, L., Pawlowski, N., Lamkemeyer, T., Sibley, L. D., Hunn, J. P. and Howard, J. C.** (2010). Phosphorylation of mouse immunity-related GTPase (IRG) resistance proteins is an evasion strategy for virulent *Toxoplasma gondii*. *PLoS Biology* **8**, e1000576. doi: 10.1371/journal.pbio.1000576.
- Striepen, B., Soldati, D., Garcia-Reguet, N., Dubremetz, J. F. and Roos, D. S.** (2001). Targeting of soluble proteins to the rhoptries and micronemes in *Toxoplasma gondii*. *Molecular and Biochemical Parasitology* **113**, 45–53. doi: 10.1016/S0166-6851(00)00379-0.
- Taylor, S., Barragan, A., Su, C., Fux, B., Fentress, S. J., Tang, K., Beatty, W. L., Hajj, H. E., Jerome, M., Behnke, M. S., White, M., Wootton, J. C. and Sibley, L. D.** (2006). A secreted serine-threonine kinase determines virulence in the eukaryotic pathogen *Toxoplasma gondii*. *Science* **314**, 1776–1780. doi: 10.1126/science.1133643.
- Turetzky, J. M., Chu, D. K., Hajagos, B. E. and Bradley, P. J.** (2010). Processing and secretion of ROP13: a unique *Toxoplasma* effector protein. *International Journal for Parasitology* **40**, 1037–1044. doi: 10.1016/j.ijpara.2010.02.014.
- Vonlaufen, N., Müller, N., Keller, N., Naguleswaran, A., Bohne, W., McAllister, M. M., Bjorkman, C., Müller, E., Caldelari, R. and Hemphill, A.** (2002). Exogenous nitric oxide triggers *Neospora caninum* tachyzoite-to-bradyzoite stage conversion in murine epidermal keratinocyte cell cultures. *International Journal for Parasitology* **32**, 1253–1265. doi: 10.1016/S0020-7519(02)00126-1.
- Vonlaufen, N., Guetg, N., Naguleswaran, A., Müller, N., Bjorkman, C., Schares, G., von Blumroeder, D., Ellis, J. and Hemphill, A.** (2004). *In vitro* induction of *Neospora caninum* bradyzoites in vero cells reveals differential antigen expression, localization, and host-cell recognition of tachyzoites and bradyzoites. *Infection and Immunity* **72**, 576–583. doi: 10.1128/IAI.72.1.576-583.2004.
- Xu, B., English, J. M., Wilsbacher, J. L., Stippec, S., Goldsmith, E. J. and Cobb, M. H.** (2000). WNK1, a novel mammalian serine/threonine protein kinase lacking the catalytic lysine in subdomain II. *Journal of Biological Chemistry* **275**, 16795–16801. doi: 10.1074/jbc.275.22.16795.