



# Presentation from the 2013 World Water Week in Stockholm

[www.worldwaterweek.org](http://www.worldwaterweek.org)

©The Author(s), all rights reserved

[www.siw.org](http://www.siw.org)



# Investments in Land & Water in the Nile Basin and Transboundary Water Management Nexus

State of the art – Science perspective

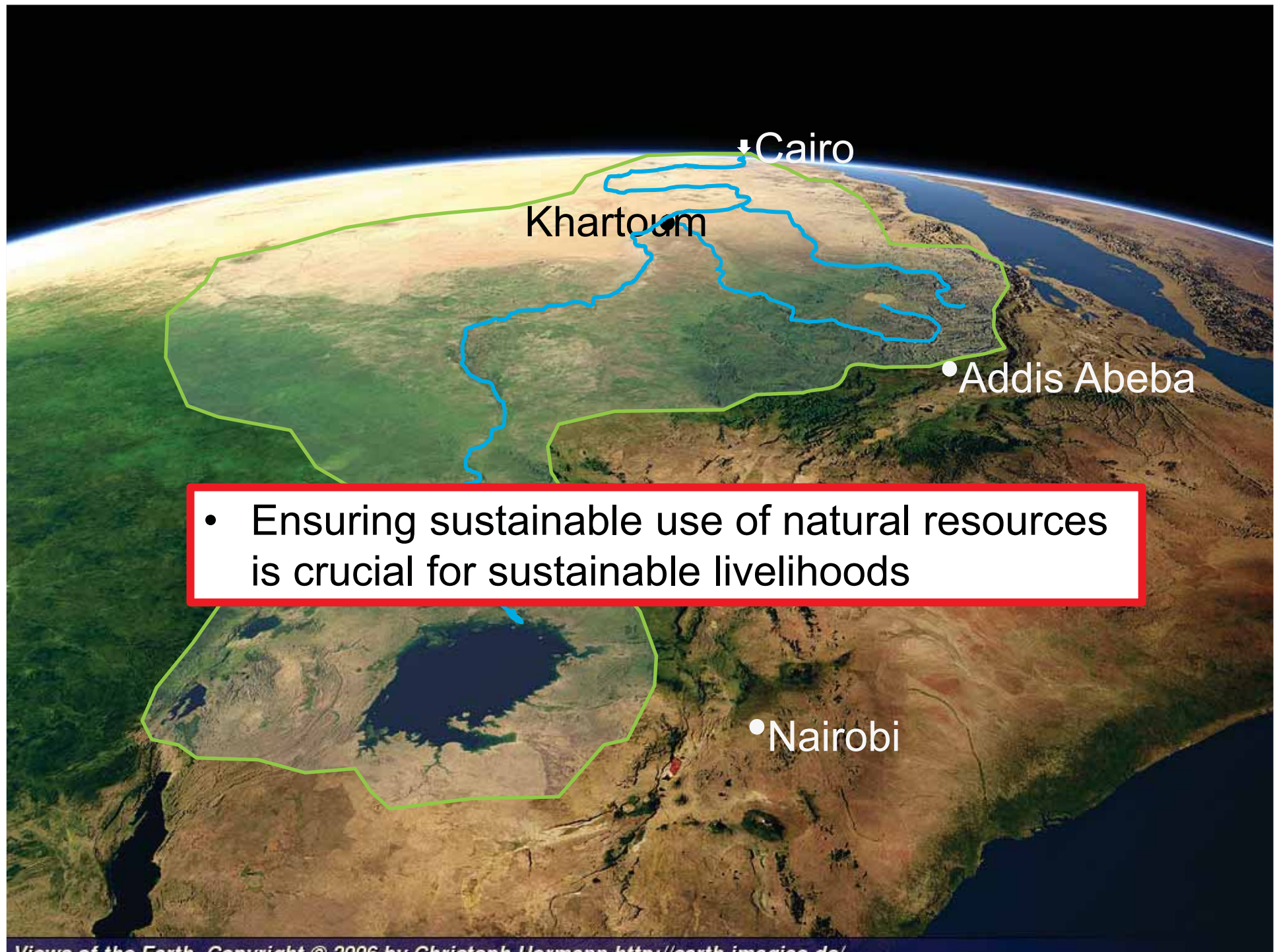
Stockholm Water Week: 1st September 2013

Isabelle Providoli, Gete Zeleke, Tena A., Hans Hurni  
Centre for Development and Environment,  
University of Bern, Switzerland



# Outline

- > Background and challenges
- > Available information on land and water management
- > WLRC project



- Ensuring sustainable use of natural resources is crucial for sustainable livelihoods

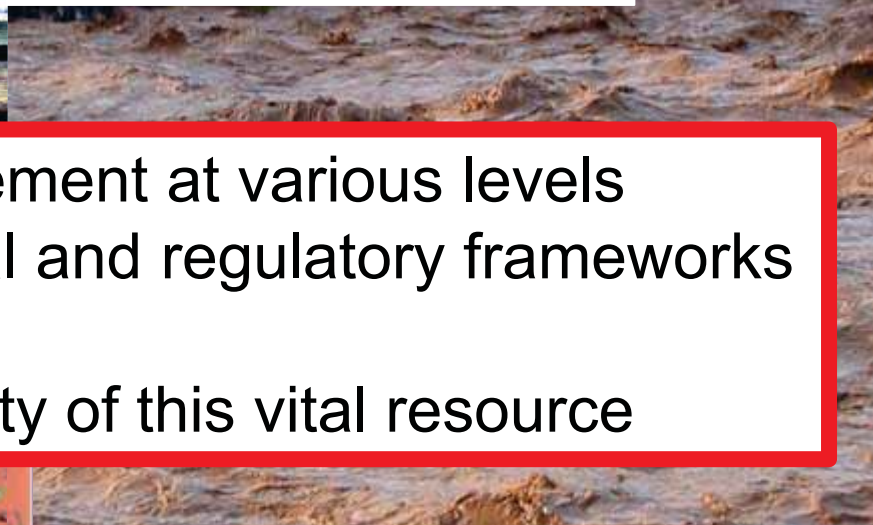


# Challenges: e.g. in Ethiopian Highlands

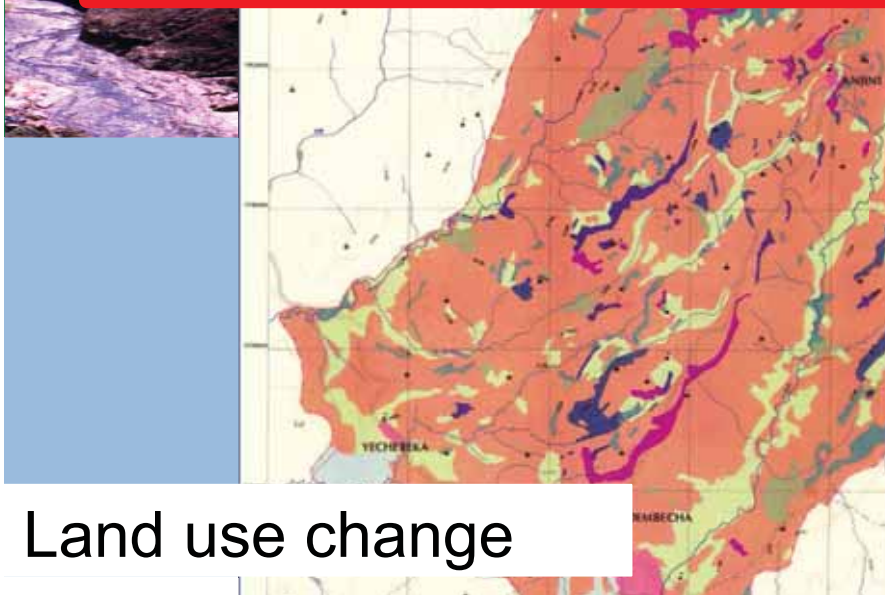
Land degradation / erosion



Water degradation



- Failure of water management at various levels
  - Lack of appropriate legal and regulatory frameworks
- Leads to growing scarcity of this vital resource



Land use change



Population growth / poverty





**Land degradation**





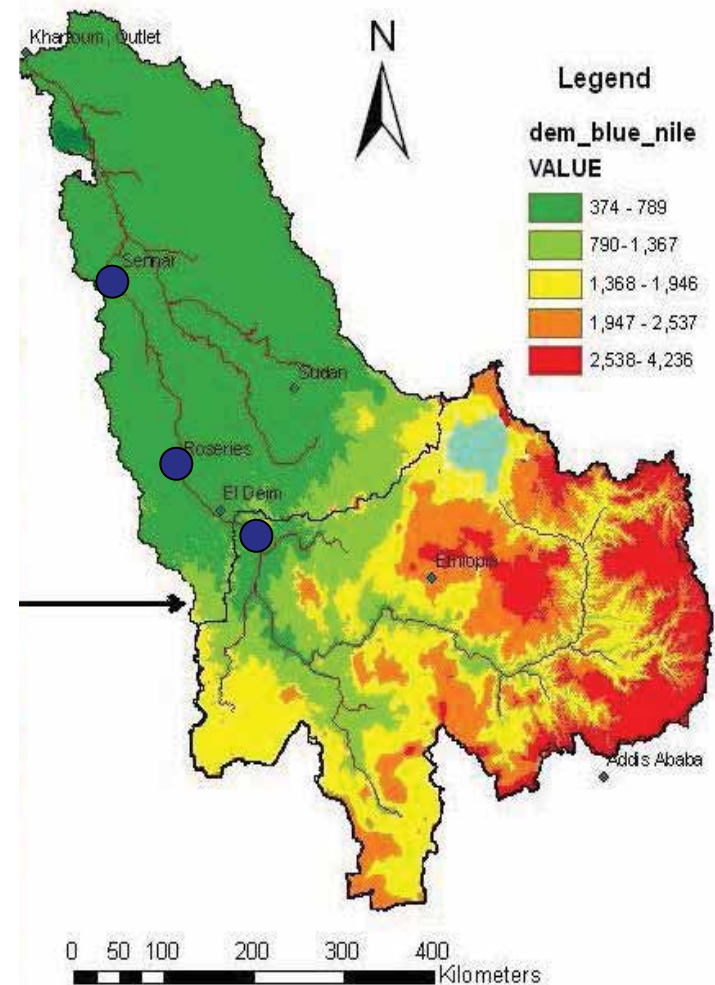
# Some of the off-site impacts of LD – transboundary implications



# Siltation of Dams

- > Roseires Dam, (in 1966) reduced its capacity by **34% in 30 years** (Abbas 2000)
- > Sennar Dam (in 1925) reduced its capacity by **60%** (Simon, 2004), **50%** (Getnet Dubale, 2008) in about 80 years
- > Calculated Sediment load reaching GRD, **140 Million tons** (ENTRO, 2006)

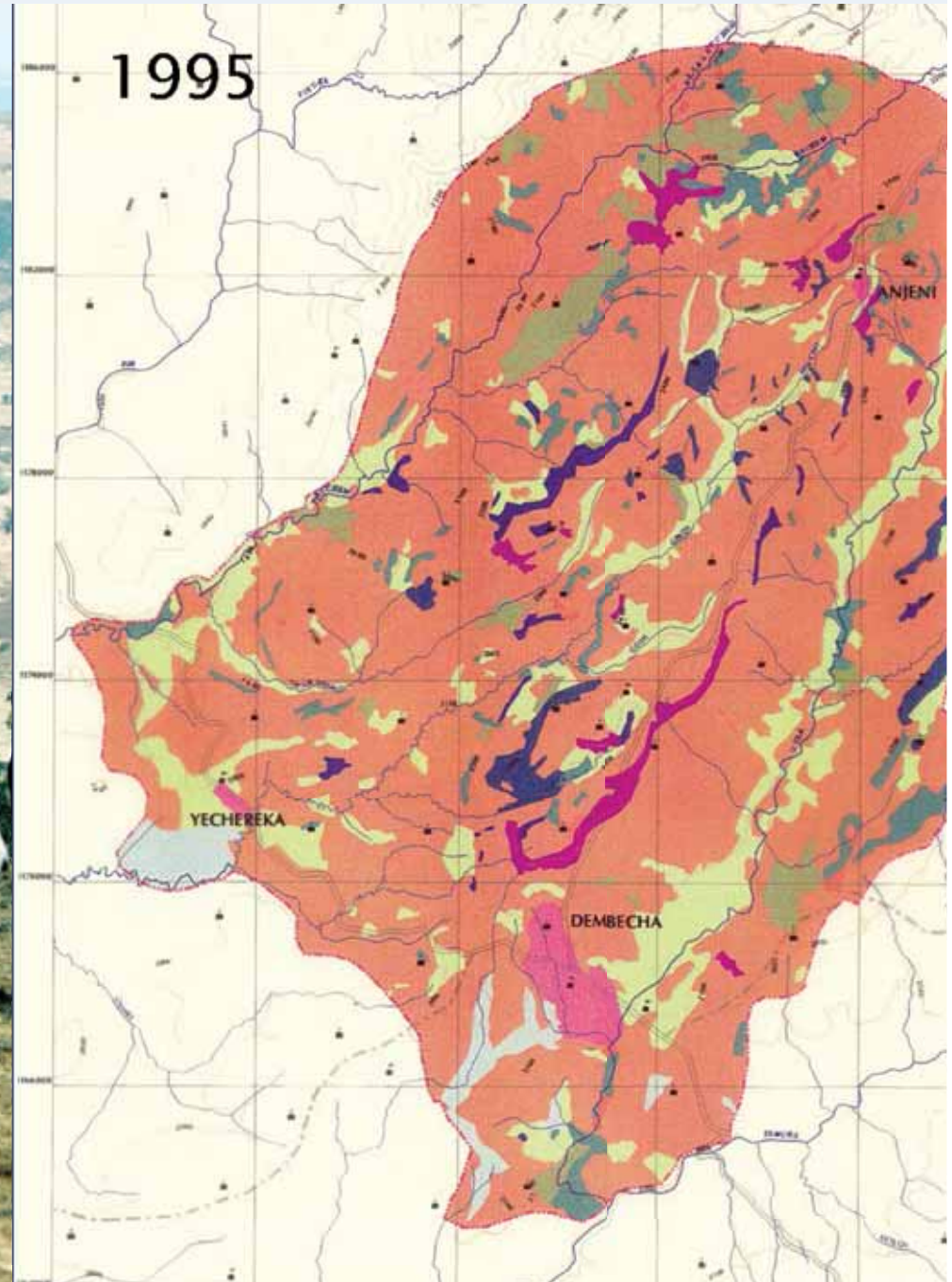
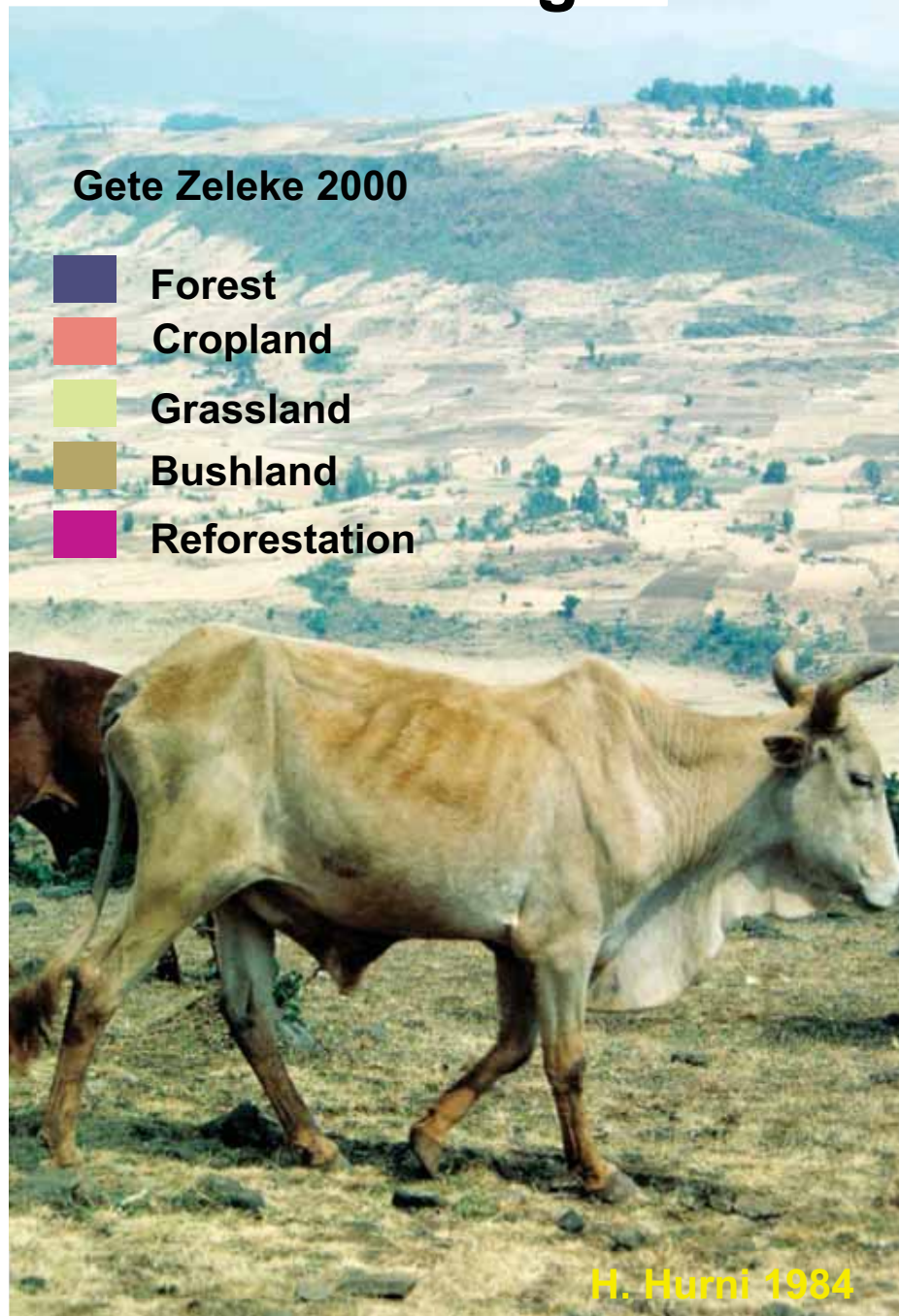
→ Threat for down-stream countries / transboundary implications



Source: G. Dubale, 2008



# Land use change





# High dynamics of land use and diversity of actors

$u^b$

UNIVERSITÄT  
BERN

## Small-scale farming



## Large scale farming / FDI



- Evidence based information and knowledge for decision making is needed

## Industry



## Urbanisation

# Current available information on water and land management?

- > Available information on water and land resources for planning of land & water management is **highly fragmented**
- > Existing **data and information gaps** or data are **not accessible**
- > **Weak capacity and awareness**
- > Important to **compile and share knowledge** on **water and land resources** in the region between different stakeholders / institutions / organisations



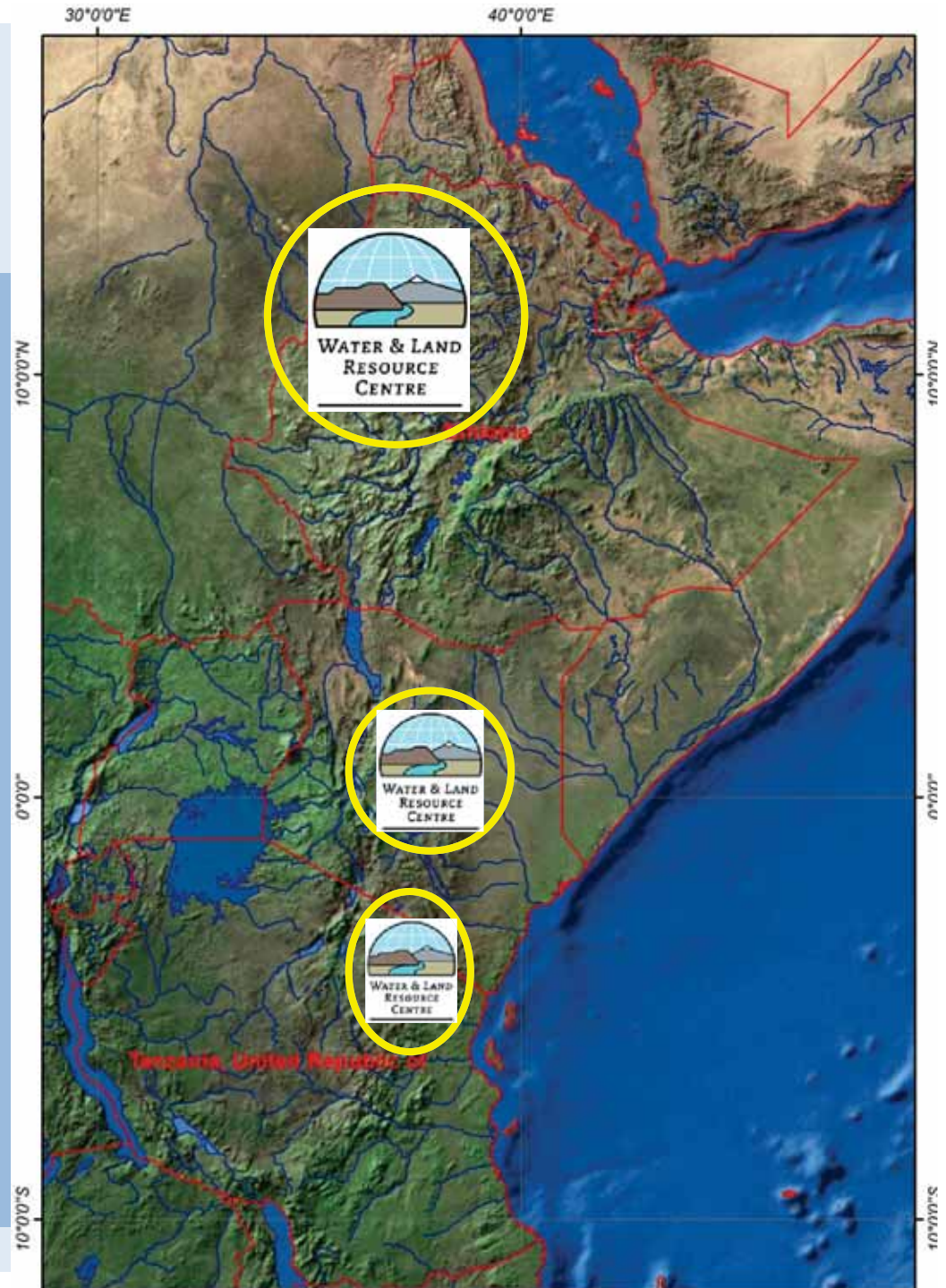
# Role of research and universities?

- > Knowledge generation (**cross-sectoral**)
- > Knowledge for **cross-scale** policy dialogue
- > Outreach through capacity building
- > Generate **concrete products** that help key stakeholders take action and policy making
- > Influence national, regional and international debates

# Resource Centres

3 basins:

- > **Blue Nile (Ethiopia)**
- > **Ewaso Ngiro north (Kenya)**
  - Pangani Basin (Tanzania)



# Project objectives

- > Establish **Water and Land Resource Centres** which serves as knowledge base
- > Improve the collection, processing and dissemination of **hydro-meteorological** and **land management** data and **related socio-economic information**



# Ethiopia component

## Focus on

- > Rainfed agriculture / land degradation
- > Integrated Watershed Management
- > 6 Learning watersheds
- > 3 Observatories



# Kenya / Tanz. component

## Focus on

- > Water users / WUAs / forum
- > Mitigating water conflict
- > 1 observatory



# Products of WLRC

- > Water and Land Resource Centres which serve as knowledge base → **open access** resource database
- > Establish learning watersheds – R & D
- > Water Users Associations -> forum
- > Continue long-term monitoring on Observatories
- > Capacity building on IWM
- > Produce periodic and client oriented outputs



# Knowledge for cross-scale policy dialogue

## WLRC ETH

Sub-national

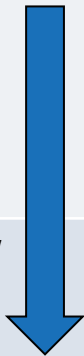
- 6 Learning Watersheds serve as **model cases / learning platforms** → **guidelines for up-scaling** for government and development partners
- 8 network of observatories as a source of data on **hydro-sedimentology, climate and land use** → for **extrapolation/modeling**

National

- **Share model case**
- 2 **policy briefs**
- Tailor-made **periodic outputs** of WALRIS (spatial and non-spatial information, e.g. climate, hydrology)

Regional/  
Trans-  
boundary

- **Share model case** and integrate to NBI, ENTRO, tripartite agreement actors
- **Impact scenarios** about implications of change and infrastructure investment in Upper Nile Basin and **transboundary effects** → publication and shared at international event
- 1 **high-level transboundary forum** (Ethiopia, Sudan, South Sudan)



# Outreach through capacity building



- > WALRIS (ETH) and all the spatial information were displayed to wider audience at **UN-ECA conference on Climate Change and Productivity for Africa**

# Target groups for WLRC

- > Policy and decision makers
- > Resource / land user
- > Scientific community
- > Development group (planners / implementers)

-> tailor-made products



A scenic landscape photograph of a mountain range. The foreground shows a steep, green hillside with scattered trees. The middle ground features rolling hills and valleys covered in vegetation. In the background, several mountain peaks are visible, some shrouded in a light blue haze. The sky is a clear, pale blue. The text "Thank You" is centered in the middle of the image in a bold, yellow, serif font.

**Thank You**