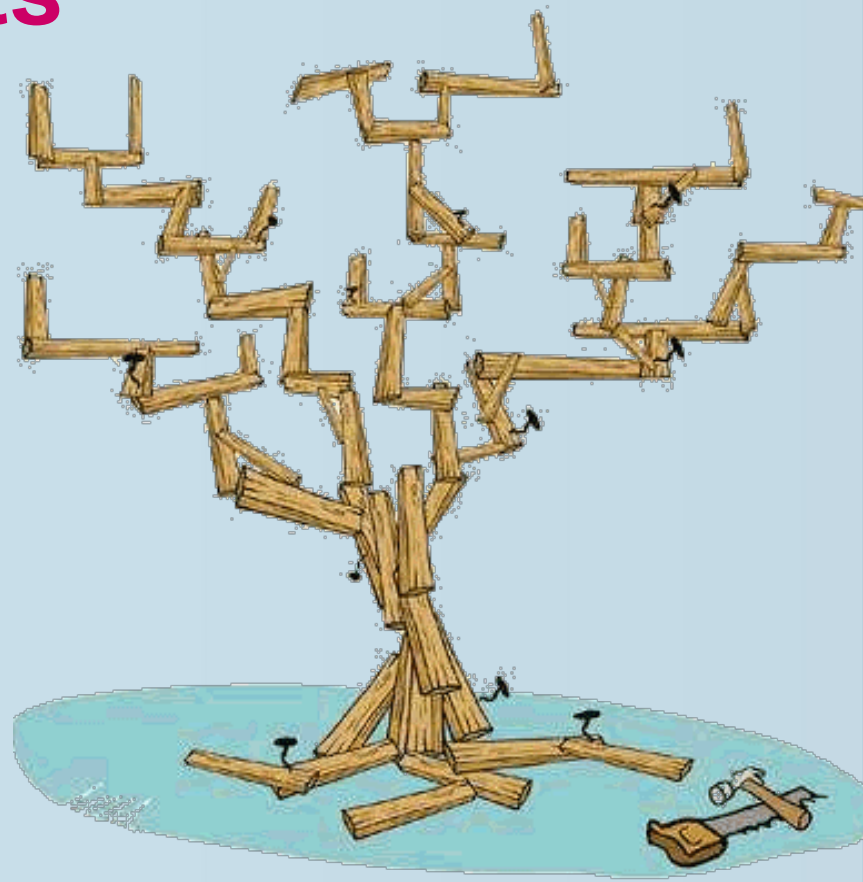
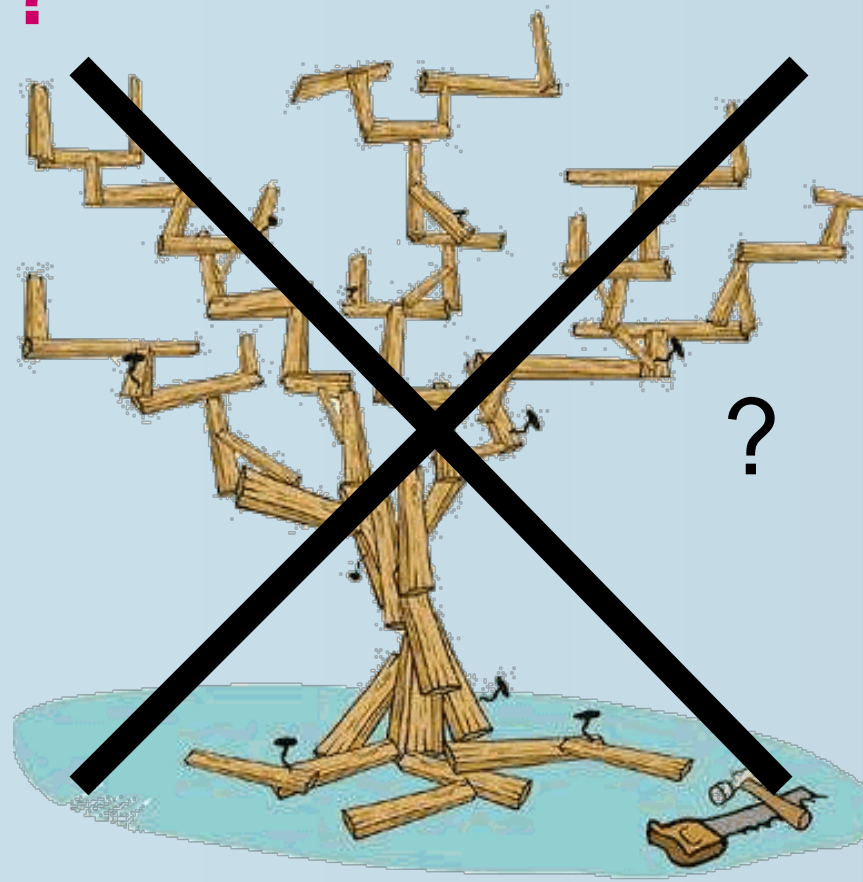


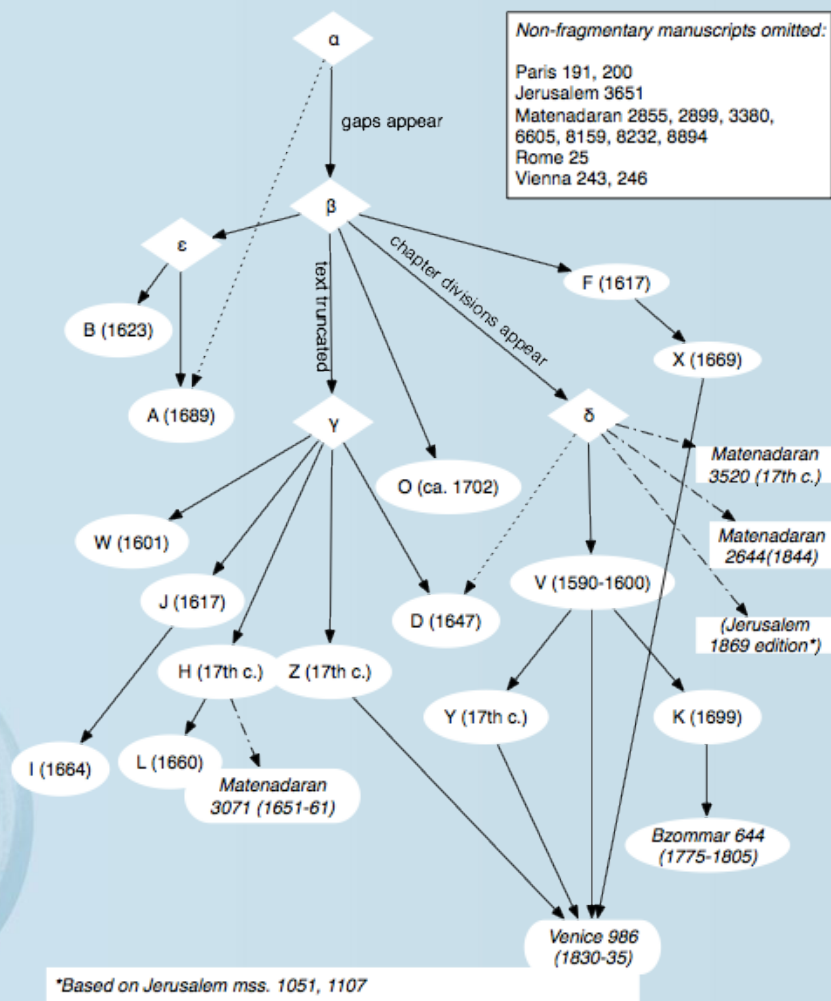
## The Tree of Texts



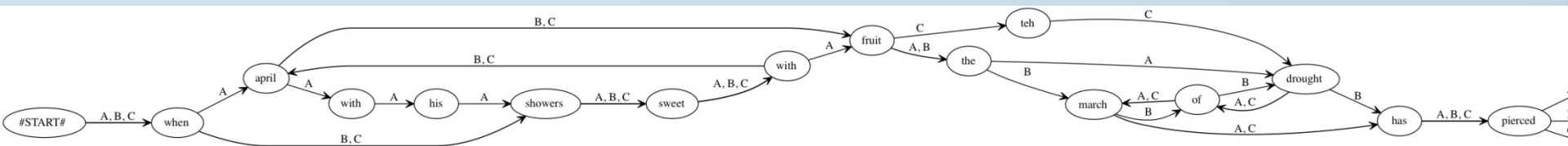
...but is it a tree?



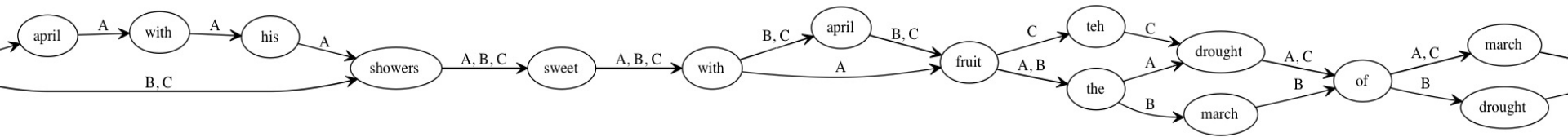
# What is a stemma?



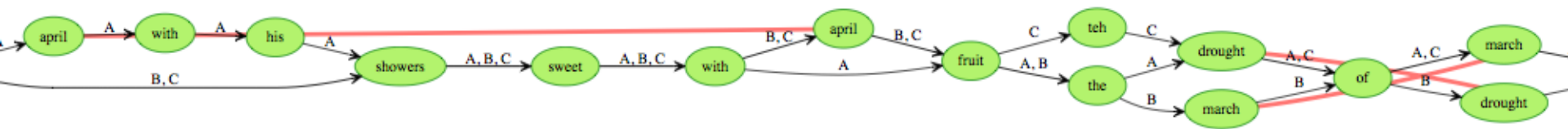
# Text tradition as variant graph



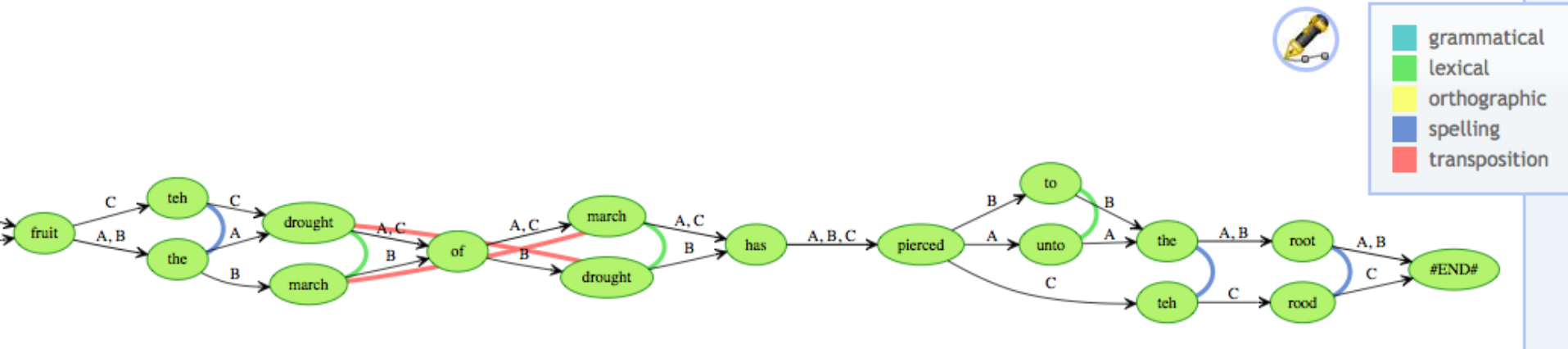
# Text variation



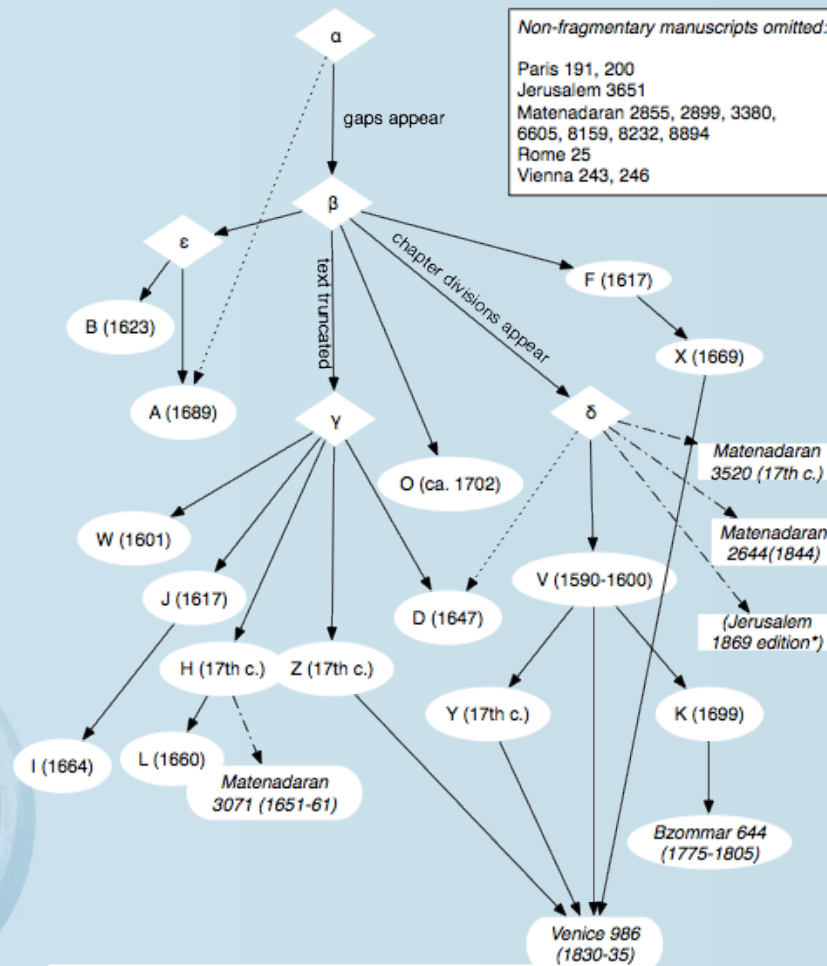
# Capturing relationships



# Capturing more relationships



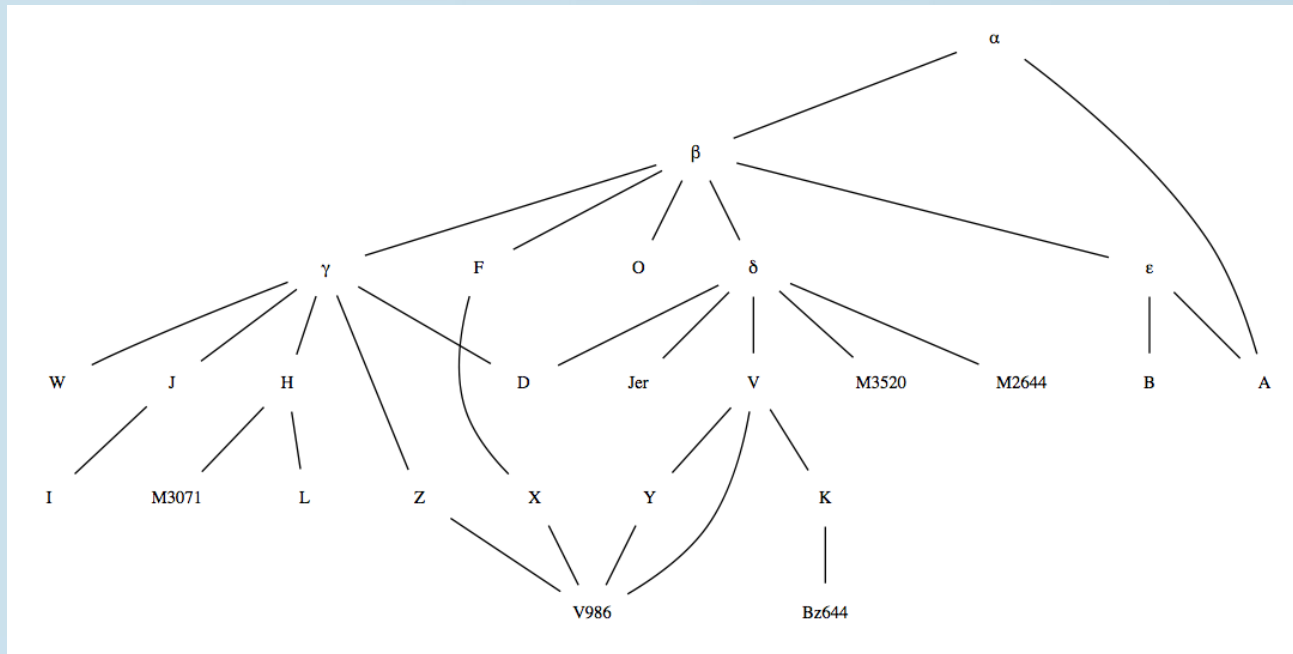
# Back to the stemma



\*Based on Jerusalem mss. 1051, 1107



# The stemma as a graph



- Connected
- Rooted
- Directed
- Acyclic

# Putting the pieces together

Stexaminer - Parzival artificial

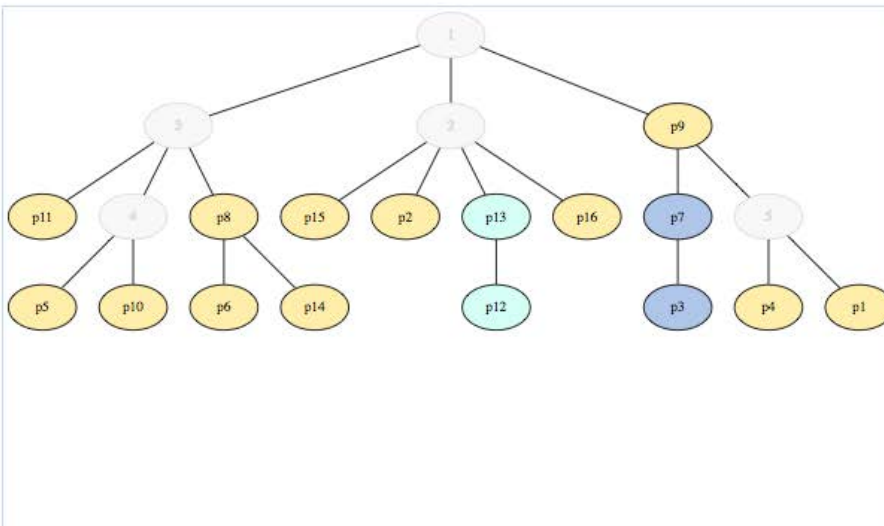
Stexaminer - Parzival artificial

byzantini.st/stemmaweb/stexaminer/B7D3FE44-B08E-11E1-A0A2-C59DFFF7791D

## Stexaminer

### Parzival artificial

2	vacillation	vaccination	
6	heart	heat	
7		,	of
11	rue	see	use
17	clash	dash	clas
18	where	with	
22	a		
27	motley	mottely	motle



#### Statistics for readings at 17:

**clash** - copied 16 time(s), changed 2 time(s)  
Reading root(s) at 1

**dash** - copied 1 time(s), changed 0 time(s)  
Reading root(s) at p7  
Reading parent(s):

- r16.1 (clash) - variant type lexical

**clas** - copied 1 time(s), changed 0 time(s)  
Reading root(s) at p13  
Reading parent(s):

- r16.1 (clash) - variant type spelling

# Live demo

- Folly
- Hubris
- Doom

