

Impact of viral load and the duration of primary infection on HIV transmission: systematic review and meta-analysis

Nello Blaser^a, Celina Wettstein^a, Janne Estill^a, Luisa Salazar Vizcaya^a, Gilles Wandeler^{a,b,c}, Matthias Egger^{a,d} and Olivia Keiser^a

Objectives: HIV 'treatment as prevention' (TasP) describes early treatment of HIV-infected patients intended to reduce viral load and transmission. Crucial assumptions for estimating TasP's effectiveness are the underlying estimates of transmission risk. We aimed to determine transmission risk during primary infection, and describe the relation of HIV transmission risk to viral load.

Design: A systematic review and meta-analysis.

Methods: We searched PubMed and Embase databases for studies that established a relationship between viral load and transmission risk, or primary infection and transmission risk, in serodiscordant couples. We analysed assumptions about the relationship between viral load and transmission risk, and between duration of primary infection and transmission risk.

Results: We found 36 eligible articles, based on six different study populations. Studies consistently found that higher viral loads lead to higher HIV transmission rates, but assumptions about the shape of this increase varied from exponential increase to saturation. The assumed duration of primary infection ranged from 1.5 to 12 months; for each additional month, the \log_{10} transmission rate ratio between primary and asymptomatic infection decreased by 0.40.

Conclusion: Assumptions and estimates of the relationship between viral load and transmission risk, and the relationship between primary infection and transmission risk, vary substantially and predictions of TasP's effectiveness should take this uncertainty into account.

© 2014 Wolters Kluwer Health | Lippincott Williams & Wilkins

AIDS 2014, **28**:1021–1029

Keywords: acute disease, HIV, primary infection, systematic review, transmission, treatment as prevention, viral load

Introduction

Treatment as prevention (TasP) is a promising approach to curbing the HIV epidemic, but estimates of its effectiveness vary. A crucial assumption in models estimating the effectiveness of TasP is the high rate of HIV transmissions during primary HIV infection. How much primary infection contributes to overall transmission is a matter of debate [1],

and estimates of the proportion of HIV transmission during the primary phase range from 2 to 90% [2]. Powers *et al.* [3] recently argued that primary infection is a major driver of the epidemic, causing up to 40% of new infections, a rate that may be high enough to compromise TasP strategies. Williams *et al.* [4], however, suggested that only 2% of all HIV transmissions occur during primary infection, which suggests that the epidemic could be ended with TasP.

^aInstitute of Social and Preventive Medicine (ISPM), University of Bern, ^bDepartment of Infectious Diseases, University Hospital Bern, Bern, Switzerland, ^cDepartment of Infectious Diseases, University of Dakar, Dakar, Senegal, and ^dSchool of Public Health and Family Medicine, University of Cape Town, Cape Town, South Africa.

Correspondence to Nello Blaser, Institute of Social and Preventive Medicine, University of Bern, Finkenhubelweg 11, CH-3012 Bern, Switzerland.

Tel: +41 31 631 35 15; fax: +41 31 631 35 20; e-mail: nblaser@ispm.unibe.ch

Received: 5 July 2013; revised: 1 November 2013; accepted: 1 November 2013.

DOI:10.1097/QAD.0000000000000135

Transmission during primary infection has been estimated directly (from serodiscordant couples with recently infected index partners) and indirectly (using high viral load values during primary infection as a proxy for primary infection). Combining evidence from two studies, one using direct and one indirect estimation of transmission, Hollingsworth *et al.* [5] concluded that the indirect approach underestimates rates of transmission during primary infection.

We conducted a systematic literature review to analyse direct and indirect estimates of transmission during primary infection and compare the results of the two approaches to determine if the measured viral load values could explain observed transmission during primary infection.

Materials and methods

Search strategy, eligibility criteria and study selection

We systematically searched Medline and Embase databases on 7 March 2012, using free text words and Medical Subject Headings in Pubmed and Emtree-terms in Embase and variations of the following search terms: HIV, transmission rate, transmission probability, viral load and primary infection. We also examined the references of included papers. Our detailed search strategy is shown in the web appendix, <http://links.lww.com/QAD/A451>. Eligible studies assessed the risk of HIV transmission on the basis of viral load values, or compared HIV transmission during the primary and the asymptomatic stage of infection. We included studies of serodiscordant couples and systematic reviews of such studies. We excluded studies of nonhuman populations and studies on nonsexual transmission (e.g. mother-to-child transmission, blood transfusion). Two reviewers independently screened abstracts and selected full text articles in accord with the above criteria. Disagreements were resolved by consensus.

Data collection

Two reviewers used a standardized sheet to extract the following: characteristics of the study (study locations, study period, follow-up time, monitoring frequency, inclusion/exclusion criteria, number of participants); characteristics of couples [sex and age of both partners, viral load, CD4⁺ cell count and antiretroviral therapy (ART) status of index partner]; factors that determine the risk of HIV transmission (sexually transmitted diseases of both partners, circumcision status of male partner, reported number of unprotected sex acts); and the relation between HIV transmission and viral load values and stage of infection. We resolved disagreements by consensus.

Standardization of study results

We standardized the unit of transmission risk to compare the results from different studies: we report transmission rates per year or transmission rate ratios. Transmission probabilities per sex act were transformed into transmission rates. We assumed an average of four sex acts per month, which is consistent with previous studies [6]. Sexual activity was assumed to be independent of viral load and phase of infection. The transmission rate per year r is therefore related to the per act transmission probability p by the formula

$$r = -n \cdot \log(1 - p),$$

where $n = 48$ is the average number of sex acts per year. A detailed description of these calculations is shown in the web appendix, <http://links.lww.com/QAD/A451>. All analyses were done in R version 2.14.2 [7].

Meta-analysis of two types of studies

We separately analysed the relationship between viral load and transmission risk, and the relationship between primary infection and transmission risk. We compared results of these separate analyses to determine if high viral load values could explain the high transmission risk during primary infection.

Relationship between viral load and transmission risk

For each study, we described the relationship between HIV transmission rates per year and log₁₀ viral load. We graphically compared different patterns of this relationship (e.g. proportional hazards models, step functions, saturating curve). We conducted a random-effects meta-analysis of the transmission hazard ratio per log₁₀ increase in viral load. If multiple studies were conducted on the same study population, we included the largest study in the meta-analysis. As a sensitivity analysis, we reanalysed data from Fideli *et al.* [8] to separate the heterogeneity caused by different assumptions and the heterogeneity caused by different data.

Relationship between primary infection and transmission risk

We extracted the assumed duration of primary infection and calculated corresponding transmission rate ratios between primary and asymptomatic infection. The result was presented graphically. For one study population (Rakai [9]), which had been analysed with different assumed durations of the primary infection, we used a regression model to relate the rate ratio to the assumed duration of primary infection.

Viral load and primary infection compared

We compared estimated transmission rates on the basis of viral load values (approach 1) with observed transmission rates during primary infection (approach 2), as follows: in approach 1, we assumed the viral load was 3 log₁₀ higher during the primary infection than during the

asymptomatic infection, an assumption consistent with a previous study by Pilcher *et al.* [10] in which it was assumed that viral load values remained elevated for 2 months. On the basis of our meta-analysis of the relationship between viral load and transmission risk, we calculated the estimated increase in transmission during primary infection based on viral load values. We used the regression model of the relationship between primary infection and transmission risk to calculate the number of expected transmissions during primary infection (again 2 months), and then compared that number with the number of expected transmissions during the asymptomatic phase. We also used other association patterns (i.e. step functions and saturating curves) to describe the relation between viral loads and HIV transmission.

Results

Identification of relevant studies

We found 788 potentially eligible articles (765 from search and 23 from references) and included 36 in our analysis (Table 1) [5,6,8–41]. Of 788 potentially eligible articles, we excluded 173 duplicates and 515 that were conducted in nonhuman populations, did not focus on sexual HIV transmission, studied other diseases than HIV, were case reports or did not report on individual viral load values. We excluded 64 more studies that were not based on serodiscordant couples ($n=39$), did not calculate a transmission rate or probability based on viral load or primary infection ($n=20$), or reported results from previous studies ($n=5$). Twenty articles described the relationship between viral load level and risk of HIV

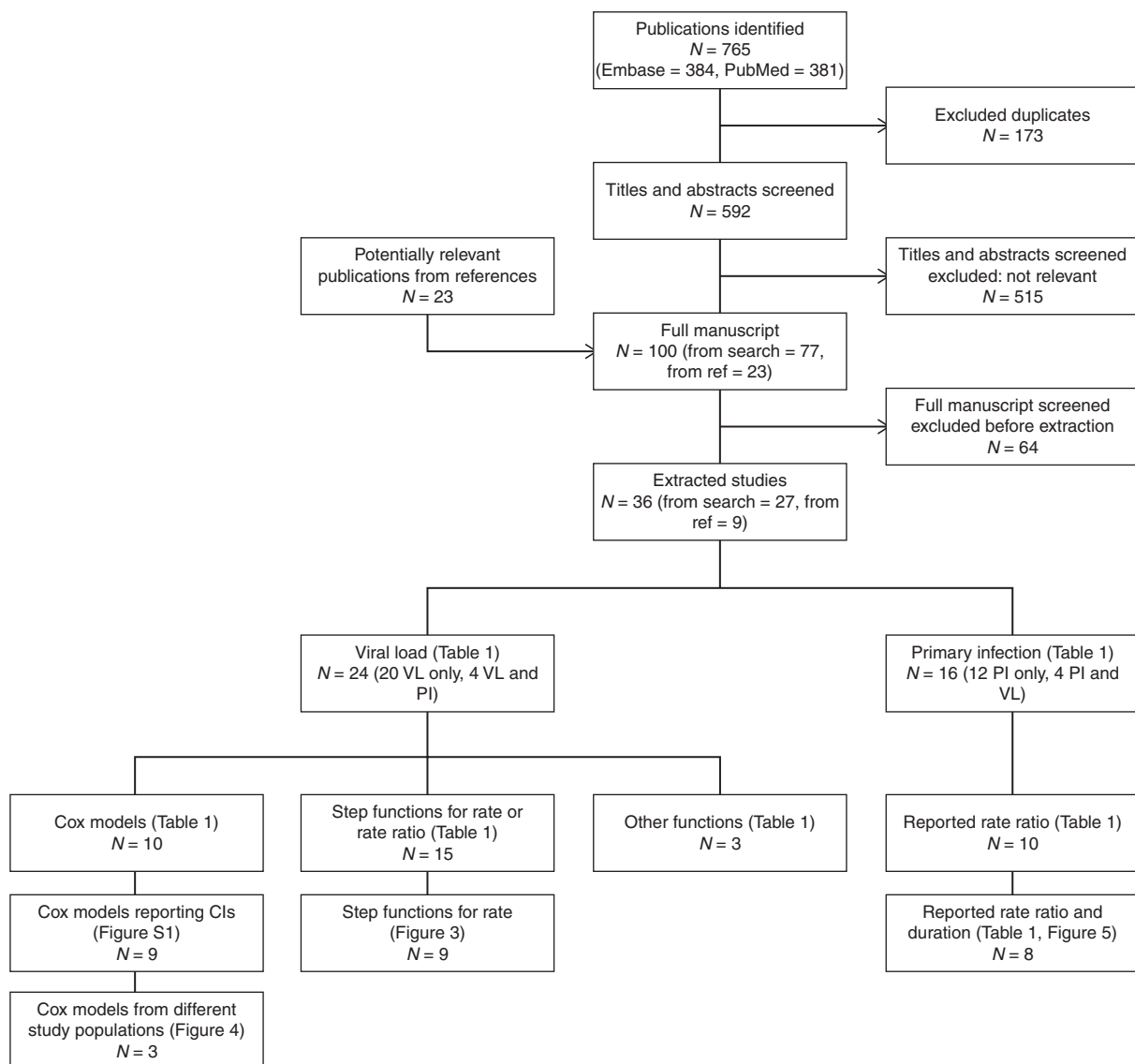


Fig. 1. Identification and selection of studies. CIs, confidence intervals; N, number of studies; PI, primary infection; VL, viral load.

transmission during the asymptomatic phase of HIV infection; 12 articles compared the risk of HIV transmission during primary infection with the risk during the asymptomatic phase, but did not consider viral load levels; four studies reported on both (Fig. 1). The 20 articles that used primary data were based on only six different primary study populations of serodiscordant couples: the European Study Group on Heterosexual Transmission of HIV, the Medical Research Council Programme on AIDS in Uganda, a cohort study in Tanzania, the Partners in Prevention HSV/HIV Transmission Study Team in seven countries in Eastern and Southern Africa, the Zambian HIV Research Project and the Rakai Project Study Group in Uganda (Table 1) [6,8,9,12,13,15,17–26,28,35–37]. Thirteen of the included articles were reviews and meta-analyses [5,10,11,14,16,27,29–34,38], and another three articles estimated the effect of primary infection on HIV transmission from a mathematical model fitted to HIV prevalence data during the early epidemic [39–41].

Study populations

The six study populations consisted of heterosexual HIV-serodiscordant couples. Studies included between 29 and 3381 couples and observed between six and 426 transmissions (Table 1) and were conducted after 1987, in different samples of the general population. In the Partners in Prevention study group, index partners were Herpes Simplex virus (HSV)-2 seropositive and had a CD4⁺ cell count of at least 250 cells/ μ l. Other inclusion criteria were married or cohabiting couples, age ranges, known circumcision status, minimum follow-up duration, reported monogamy, reported unprotected sex or a high risk of HIV infection.

Relationship between viral load and transmission risk

Most studies made one of three different assumptions about the relationship between HIV viral load values and the risk of HIV transmission (Table 1): step functions wherein viral load values are grouped into categories [6,8,9,11–22]; Cox proportional hazards models wherein the transmission rate r depends on the \log_{10} viral load x according to the formula $r(x) = c \cdot b^x$, with constants b and c [6,8,19,20,23–28]; and a variation of the Cox proportional hazards model in which the per-act transmission probability was assumed to be proportional instead of the rate, which results in the function $r(x) = -n \cdot \log(1 - c \cdot b^x)$ for the transmission rate, with constants b and c and annual number of sex acts n [29,30]. For high viral load values, Cox models assume that HIV transmission rates will continue to increase. Step functions assumed a constant transmission rate for high viral loads or reported transmission rates only for \log_{10} viral load values below 7. Fraser *et al.* [31] assumed a saturating curve (Hill function). Figure 2 (top) illustrates the different patterns, using the most recent study in each

category. Although transmission rates all increase with higher viral load values, their shapes are quite different, and differences become more pronounced for high viral load values. Figure 2 (bottom) shows the results of a reanalysis of data by Fideli *et al.* [8], which illustrates that the heterogeneity between models persists for high viral load values when analysing the same data.

Cox proportional hazard models assume a constant increase in risk of HIV infection per \log_{10} increase in viral load. Across the nine studies, the HIV transmission rate ratio per \log_{10} increase in viral load ranged from 1.5 to 2.9 (Figure S2, <http://links.lww.com/QAD/A451>). Our meta-analysis of the largest studies of each study population ($n = 3$) resulted in a combined rate ratio of 2.09 [95% confidence interval (CI) 1.47–2.97] per \log_{10} increase in viral load (Fig. 3).

Relationship between primary infection and transmission risk

The assumed duration of primary infection varied from 1.5 to 12 months; corresponding HIV transmission rate ratios that compared primary with asymptomatic infection varied from 43.7 to 0.8 (Table 1; Fig. 4, top). Two studies [5,32] estimated both duration and rate ratio. On the basis of the Rakai data, Hollingsworth *et al.* [5] found that primary infection lasted 87 days, and Pinkerton [32] found that it lasted 49 days. Studies that assumed primary infection lasted for a year consistently found that it had little effect on transmission rates. For the Rakai study, we found a linear relationship between duration of primary infection and log rate ratio: each month increase in duration of the primary infection decreased the log rate ratio between primary and asymptomatic infection by 0.40 (Fig. 4, bottom).

Viral load and primary infection compared

Viral load values during primary infection do not entirely explain the higher risk of HIV transmission during this period. Our meta-analysis (Fig. 3) shows that a 3 \log_{10} increase in viral load values (consistent with Pilcher *et al.* [10] who assumed that the primary infection lasts for 2 months) corresponds to a 9.1-fold higher risk of HIV transmission during primary infection than during the asymptomatic period ($=2.09^3$). If we use the highest reported rate ratio of 2.89 [23], the transmission rate ratio between primary and asymptomatic infection reaches 24 ($=2.89^3$). When we assumed other relationships between viral load and transmission rates (e.g. saturating curves), the estimate was lower.

In contrast, observed HIV transmissions during primary infection were higher than we expected based on viral load values. On the basis of the meta-regression (Fig. 4, bottom), the rate ratio for a primary infection of 2 months was 37 ($=e^{3.61}$).

Table 1. Characteristics of included studies.

Reference	Time period	Serodiscordant couples	Person-years of follow-up	Number of transmissions	Transmission risk depends on VL/PI	Transmission rate $r(x)$ as a function of $x = \log_{10}(VL)$	Duration of primary infection (days)	Transmission rate ratio between primary and asymptomatic infection
European Study Group on Heterosexual Transmission of HIV								
Leynaert <i>et al.</i> [35]	1987–1992	499	NA	94	PI		90	3.15
Medical Research Council Programme on AIDS in Uganda								
Carpenter <i>et al.</i> [37]	1989–1999	29	85	6	PI		365	2.4
Tanzania cohort study								
Hugonnet <i>et al.</i> [36]	1991–1995	61	122	9	PI		365	2.4
Partners in Prevention HSV/HIV Transmission Study Team								
Baeten <i>et al.</i> [12]	2004–2008	1096	1685	64	VL	Step function		
Baeten <i>et al.</i> [6]	2004–2008	2521	3509	113	VL	Step function, $r(x) = c \cdot b^x$		
Celum <i>et al.</i> [13]	2004–2007	3360	4868	132	VL	Step function		
Donnell <i>et al.</i> [15]	2004–2008	3381	4467	142	VL	Step function		
Hughes <i>et al.</i> [23]	2004–2008	3297	NA	86	VL	$r(x) = c \cdot b^x$		
Lingappa <i>et al.</i> [19]	2004–2008	3381	4756	108	VL	Step function, $r(x) = c \cdot b^x$		
Rakai Project Study Group								
Gray <i>et al.</i> [17]	1994–1998	411	752	89	VL	Step function		
Gray <i>et al.</i> [18]	1994–1998	174	328	38	VL	Step function		
Kiwanuka <i>et al.</i> [24]	1997–2002	268	812	92	VL/PI	$r(x) = c \cdot b^x$	365	0.8
Quinn <i>et al.</i> [20]	1994–1998	415	760	90	VL	Step function, $r(x) = c \cdot b^x$		
Wawer <i>et al.</i> [9]	1994–1999	235	558	68	VL/PI	Step function	150	11.71
Zambia HIV Research Project								
Fideli <i>et al.</i> [8]	1994–2000	317	NA	109	VL	Step function, $r(x) = c \cdot b^x$		
Malhotra <i>et al.</i> [25]	1995–2006	567	NA	240	VL	$r(x) = c \cdot b^x$		
Merino <i>et al.</i> [26]	1995–2006	566	1697	240	VL	$r(x) = c \cdot b^x$		
Song <i>et al.</i> [28]	1995–2006	568	NA	240	VL	$r(x) = c \cdot b^{\wedge}x$		
Tang <i>et al.</i> [21]	1995–2002	292	NA	141	VL	Step function		
Tang <i>et al.</i> [22]	1995–2006	429	1336	205	VL	Step function		
No primary data								
Attia <i>et al.</i> [11]								
Boily <i>et al.</i> [33]								
Chakraborty <i>et al.</i> [29]								
Corey <i>et al.</i> [14]								
Fox <i>et al.</i> [16]								
Fraser <i>et al.</i> [31]								
Gisselquist <i>et al.</i> [38]								
Hollingsworth <i>et al.</i> [5]								
Jacquez <i>et al.</i> [39]								
Modjarrad <i>et al.</i> [27]								
Pilcher <i>et al.</i> [10]								
Pinkerton [32]								
Powers <i>et al.</i> [34]								
Shiboski <i>et al.</i> [40]								
Shiboski <i>et al.</i> [41]								
Wilson <i>et al.</i> [30]								

Step function: $r(x) = \sum_{j=1}^n a_j I_{\{b_{j-1} \leq x < b_j\}}$; Hill function: $r(z) = \frac{\beta_{max} z^{\beta_k}}{z^{\beta_k} + (\beta_{50})^{\beta_k}}$; $z = 10^x$; PI, primary infection; VL, viral load.

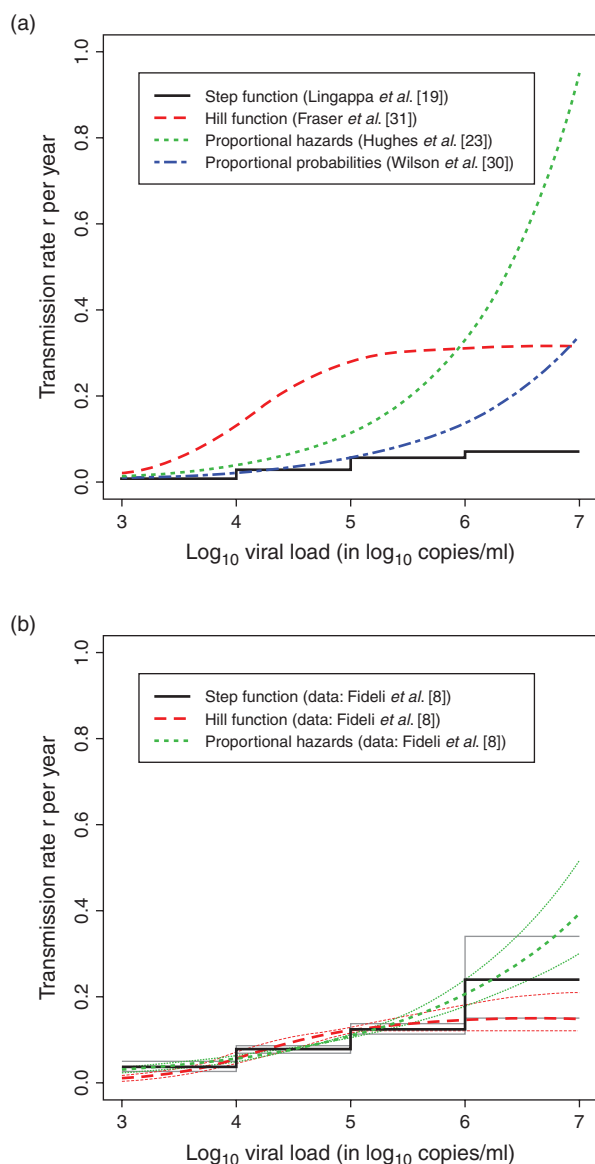


Fig. 2. Examples of the four assumed relationships between viral load and transmission rates. (a) The most recent study of each example is presented. Bottom: Reanalysis of the data by Fideli *et al.* [8], which shows that the heterogeneity in transmission risk for lower viral load values is mostly due to different data sources, but for high viral load values, the heterogeneity is also due to different assumptions.

Discussion

The relationship between viral load values and HIV transmission rate was described in four different ways: step functions, Cox proportional hazard models, proportional probability models and Hill functions. Risk of HIV transmission increased with viral load values, but for high viral load values, the pattern of the relationship is unclear. For high viral load values, transmission rates across the studies ranged from saturating to exponentially

increasing. Between studies, assumed duration of primary infection varied from 1.5 to 12 months. Studies that assumed longer primary infections estimated lower rates of HIV transmission during primary infection. Predictions based on high viral load values alone underestimated the risk of HIV transmission during primary infection.

The discrepancy in transmission risk between studies that focused on viral load and studies that focused on primary infection could be because viral load values were measured during the asymptomatic phase, when the virus may be less infectious [42]. We could not determine if viral load was measured during primary or asymptomatic infection. High estimated transmission risk during primary infection might also be caused by coinfections [5,9,32], greater susceptibility in newly exposed uninfected partners [9] or biological differences between strains [32]. None of these hypotheses has been tested.

The high risk of HIV transmission during primary infection (beyond what may be explained by high viral load values during primary infection) is supported by Wawer *et al.* [9]. After adjusting for viral load values, Wawer *et al.* [9] found that HIV transmission rates during primary infection was 4.98 (95% CI 2.00–12.39) times higher than during asymptomatic infection. In contrast, Kiwanuka *et al.* [24] assumed that primary infection lasted a year and estimated that the transmission rate ratio adjusted for viral load was 0.8 (0.4–1.4). Other authors [43,44] used different methods to determine the influence of primary infection on the HIV epidemic. For instance, Brenner *et al.* [43] used phylogenetic clustering analysis and found that early infection accounted for approximately half of onward transmissions.

Earlier meta-analyses compared HIV transmission during primary and asymptomatic infection without accounting for different durations of primary infection. Boily *et al.* [33] and Powers *et al.* [34] meta-analysed the estimated rates during primary infection from the Rakai study and the European study group (with different durations of primary infection), and found that transmission rates were 6.6 and 9.2 times higher during primary infection than in the asymptomatic period. The Rakai study and the European study are difficult to compare because they are designed differently. The Rakai study included couples who started out sero-negative, and in which one partner seroconverted during follow-up. Leynaert *et al.* [35] estimated time of infection on the basis of decline in CD4^+ cell counts, and thus was less reliable than the Rakai study. Although the Rakai study consisted of only 23 couples and transmissions were not genetically confirmed, it is still the best data to assess transmission rates during primary infection. Whether this study provides solid evidence about the transmission rate during primary infection is a matter of debate [1]. Studies by Hugonnet *et al.* [36] and by Carpenter *et al.* [37] estimated

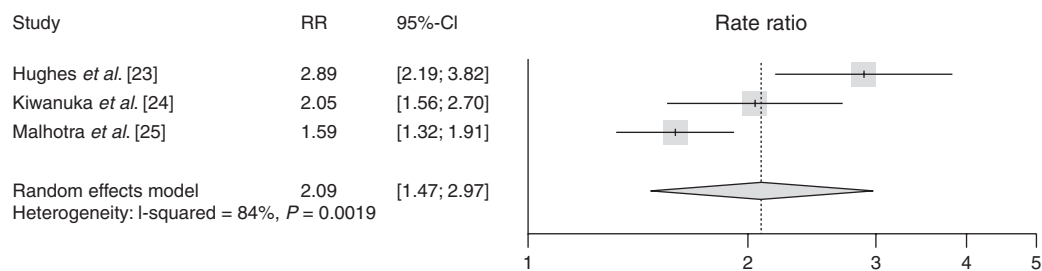


Fig. 3. Meta-analysis of transmission rate ratio per log₁₀ increase in viral load. For each study population, we used the largest study reporting rate ratio per log₁₀ increase in viral load. Figure S2, <http://links.lww.com/QAD/A451> summarizes all studies on rate ratio per log₁₀ increase.

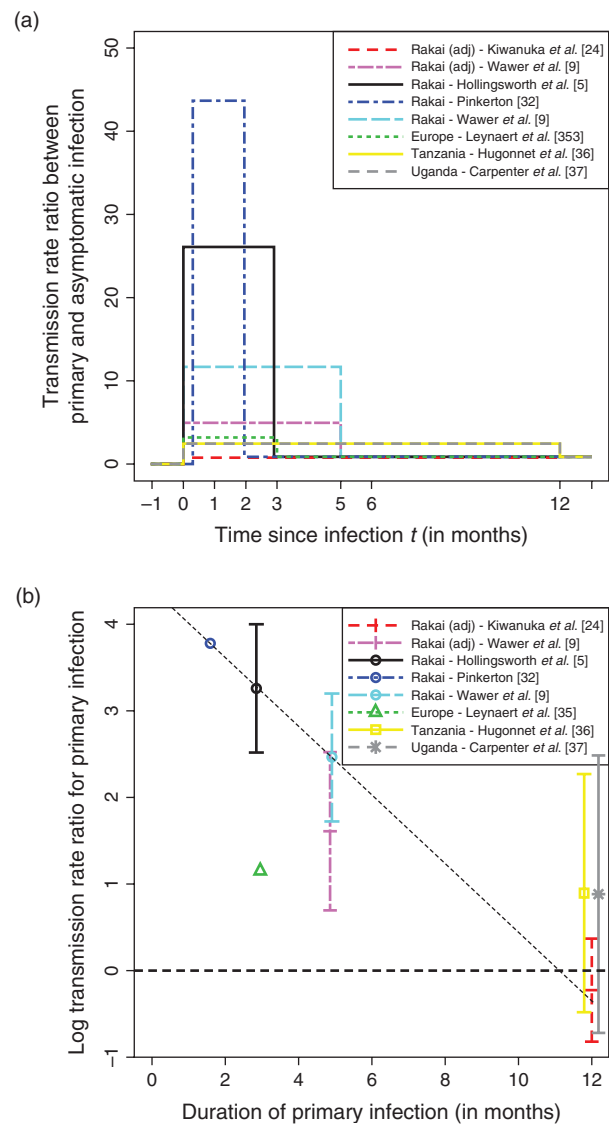


Fig. 4. Duration of primary infection and transmission rate ratio between primary and asymptomatic infection. Top: Transmission rates in the first year after infection. Bottom: Transmission rate ratio between primary and asymptomatic infection and linear regression for Rakai studies that did not adjust for viral load values.

transmission rates during primary infection under the assumption that primary infection lasted a year. These two studies might be interesting to reanalyse with different durations.

Several models assessed the effect of a test and treat strategy on HIV transmission, with conflicting results. The model used by Granich *et al.* [45] showed that, in a high HIV prevalence setting, annual HIV testing and immediate treatment could reduce HIV incidence to below one per 1000 person-years. Powers *et al.* [3] showed that the proposed intervention (annual HIV testing and immediate treatment) did not reduce HIV transmission as much as Granich *et al.* [45] had estimated. The validity of these findings and the differences between them were discussed at length [1,4,46]. Granich *et al.* [45] assumed a rate ratio of 10 for the first 2 months, while Powers *et al.* [3] assumed a risk ratio of 30.3 over 4.8 months. Our review suggests that these assumptions are opposite extremes: the rate ratio of 10 would be appropriate if primary infection lasted for 6 months instead of 2, while a rate ratio of 30 would be reasonable if the primary infection lasted for 2 months instead of 4.8. Although we are not sure how long primary infection lasts, our review shows that duration and transmission rate during this period are negatively associated and bivariate estimates are necessary.

We standardized transmission risk before we analysed the data to compare the results of different studies. We thus made assumptions about sexual behaviour, which are probably inaccurate. We could not account for changes in sexual behaviour patterns over time [47] or inaccurate self-reporting of sexual contacts [48]. Because we used transmission rates per year instead of transmission probabilities per sex act, our assumptions about sexual behaviour did not substantially affect the results. Moreover, we only used these assumptions in five of 24 viral load studies, which reported probabilities instead of rates. For primary infection studies, we report rate ratios, and these are less sensitive to sexual behaviour than rates. We acknowledge these additional limitations: Most of the studies that used a step function stratified risk of HIV transmission according to variables (e.g. circumcision status, female to male versus male to female transmission,

baseline CD4⁺ cell count value, baseline age), which made comparisons difficult. The number of steps and change points also varied between studies. Studies used different inclusion criteria. There was some heterogeneity in HIV transmission between studies. Transmission rates in the Partners in Prevention study were lower than in the Rakai study. It is unlikely that the functional dependence between transmission rate and viral load values depends on different transmission rates between studies. In a sensitivity analysis, in which we analysed data from Fideli *et al.* [8] under different assumptions about the relationship between viral load and transmission rates, we found that heterogeneity was smaller, but remained substantial.

Ours is the first review to consider assumed durations of primary infection. The strength of our study is its unique design: we systematically reviewed the literature and analysed rates of HIV transmission on the basis of different relationships between viral load and transmission rate. Our viral load models were not restricted to one parametric form, and we could fully compare estimates of transmission rates for high viral loads. We analysed rates of HIV transmission for different durations of primary infection. This is an improvement over previous reviews that meta-analysed transmission rates without adjusting for the underlying assumptions about the duration of primary infection.

Reliable estimates of transmission rates for high viral loads are urgently needed. All studies were based on six primary data sources. Collecting more primary data on HIV-negative couples who seroconvert, and on serodiscordant couples will improve estimates. Current studies capture additional transmission risk for an assumed duration of primary infection, but accurate estimation of this duration requires more complete data on initially seronegative couples. Available primary data on viral load should be reanalysed to estimate the shape of the increase in transmission rates when viral load increases.

Conclusion

The relation between viral load values and HIV transmission, and the duration and amount of transmission during primary infection are poorly understood. HIV transmission risk increases as viral load values increase, but the pattern of this relationship is unclear. If transmission rates increase exponentially with viral load values, then finding and treating patients with high viral load values should be a public health priority [49]. But if the function is saturating, then TasP may not reduce HIV incidence. Estimates of the relationship between HIV transmission risk and viral load, and the contribution of primary infection diverge because researchers make different assumptions about the shape of the relationship between transmission rate and viral load, and the duration of primary infection. TasP is widely advocated as a public health approach for HIV prevention, but we cannot assess

its effectiveness until HIV transmission rates in the primary phase, and effect of viral load on transmission, are accurately described.

Acknowledgements

We would like to thank K. Tal for her editorial assistance.

This work was supported by the National Institute of Allergy and Infectious Diseases through grant 5U01-AI069924-05 to the International epidemiological Data-bases to Evaluate AIDS (IeDEA) and the Swiss National Science Foundation [Prosper grant 32333B_131629 to O.K. and ProDoc PhD grant PDFMP3_137106 to N.B. and O.K.].

N.B., C.W., M.E., O.K. conceived and designed the systematic review. N.B., C.W., J.E., L.S.V. performed data extraction. N.B. analysed the data. N.B. and O.K. wrote the manuscript. G.W. and M.E. revised the manuscript. All authors contributed to the interpretation of the results and to the final version of the manuscript.

Conflicts of interest

The authors have no conflicts of interest to declare.

References

1. Cohen MS, Dye C, Fraser C, Miller WC, Powers KA, Williams BG. **HIV treatment as prevention: debate and commentary – will early infection compromise treatment-as-prevention strategies?** *PLoS Med* 2012; **9**:e1001232.
2. Cohen MS, Shaw GM, McMichael AJ, Haynes BF. **Acute HIV-1 infection.** *N Engl J Med* 2011; **364**:1943–1954.
3. Powers KA, Ghani AC, Miller WC, Hoffman IF, Pettifor AE, Kamanga G, *et al.* **The role of acute and early HIV infection in the spread of HIV and implications for transmission prevention strategies in Lilongwe, Malawi: a modelling study.** *Lancet* 2011; **378**:256–268.
4. Williams BG, Granich R, Dye C. **Role of acute infection in HIV transmission.** *Lancet* 2011; **378**:1913author reply 1914–1915.
5. Hollingsworth TD, Anderson RM, Fraser C. **HIV-1 transmission, by stage of infection.** *J Infect Dis* 2008; **198**:687–693.
6. Baeten JM, Kahle E, Lingappa JR, Coombs RW, Delany-Moretlwe S, Nakku-Joloba E, *et al.* **Genital HIV-1 RNA predicts risk of heterosexual HIV-1 transmission.** *Sci Transl Med* 2011; **3**:77ra29.
7. R Development Core Team. *R: a language and environment for statistical computing.* Vienna, Austria: R Foundation for Statistical Computing; 2012.
8. Fideli US, Allen SA, Musonda R, Trask S, Hahn BH, Weiss H, *et al.* **Virologic and immunologic determinants of heterosexual transmission of human immunodeficiency virus type 1 in Africa.** *AIDS Res Hum Retroviruses* 2001; **17**:901–910.
9. Wawer MJ, Gray RH, Sewankambo NK, Serwadda D, Li X, Laeyendecker O, *et al.* **Rates of HIV-1 transmission per coital act, by stage of HIV-1 infection, in Rakai, Uganda.** *J Infect Dis* 2005; **191**:1403–1409.
10. Pilcher CD, Joaki G, Hoffman IF, Martinson FE, Mapanje C, Stewart PW, *et al.* **Amplified transmission of HIV-1: comparison of HIV-1 concentrations in semen and blood during acute and chronic infection.** *AIDS* 2007; **21**:1723–1730.

11. Attia S, Egger M, Muller M, Zwahlen M, Low N. **Sexual transmission of HIV according to viral load and antiretroviral therapy: systematic review and meta-analysis.** *AIDS* 2009; 23:1397–1404.
12. Baeten JM, Donnell D, Kapiga SH, Ronald A, John-Stewart G, Inambao M, et al. **Male circumcision and risk of male-to-female HIV-1 transmission: a multinational prospective study in African HIV-1-serodiscordant couples.** *AIDS* 2010; 24:737–744.
13. Celum C, Wald A, Lingappa JR, Magaret AS, Wang RS, Mugo N, et al. **Acyclovir and transmission of HIV-1 from persons infected with HIV-1 and HSV-2.** *N Engl J Med* 2010; 362:427–439.
14. Corey L, Wald A, Celum CL, Quinn TC. **The effects of herpes simplex virus-2 on HIV-1 acquisition and transmission: a review of two overlapping epidemics.** *J Acquir Immune Defic Syndr* 2004; 35:435–445.
15. Donnell D, Baeten JM, Kiarie J, Thomas KK, Stevens W, Cohen CR, et al. **Heterosexual HIV-1 transmission after initiation of antiretroviral therapy: a prospective cohort analysis.** *Lancet* 2010; 375:2092–2098.
16. Fox J, White PJ, Weber J, Garnett GP, Ward H, Fidler S. **Quantifying sexual exposure to HIV within an HIV-serodiscordant relationship: Development of an algorithm.** *AIDS* 2011; 25:1065–1082.
17. Gray RH, Kiwanuka N, Quinn TC, Sewankambo NK, Serwadda D, Mangan FW, et al. **Male circumcision and HIV acquisition and transmission: cohort studies in Rakai, Uganda. Rakai Project Team.** *AIDS* 2000; 14:2371–2381.
18. Gray RH, Wawer MJ, Brookmeyer R, Sewankambo NK, Serwadda D, Wabwire-Mangen F, et al. **Probability of HIV-1 transmission per coital act in monogamous, heterosexual, HIV-1-discordant couples in Rakai, Uganda.** *Lancet* 2001; 357:1149–1153.
19. Lingappa JR, Hughes JP, Wang RS, Baeten JM, Celum C, Gray GE, et al. **Estimating the impact of plasma HIV-1 RNA reductions on heterosexual HIV-1 transmission risk.** *PLoS One* 2010; 5:e12598.
20. Quinn TC, Wawer MJ, Sewankambo N, Serwadda D, Li C, Wabwire-Mangen F, et al. **Viral load and heterosexual transmission of human immunodeficiency virus type 1.** *N Engl J Med* 2000; 342:921–929.
21. Tang J, Penman-Aguilar A, Lobashevsky E, Allen S, Kaslow RA. **HLA-DRB1 and -DQB1 alleles and haplotypes in Zambian couples and their associations with heterosexual transmission of HIV type 1.** *J Infect Dis* 2004; 189:1696–1704.
22. Tang J, Shao W, Yoo YJ, Brill I, Mulenga J, Allen S, et al. **Human leukocyte antigen class I genotypes in relation to heterosexual HIV type 1 transmission within discordant couples.** *J Immunol* 2008; 181:2626–2635.
23. Hughes JP, Baeten JM, Lingappa JR, Magaret AS, Wald A, de Bruyn G, et al. **Determinants of per-coital-act HIV-1 infectivity among African HIV-1-serodiscordant couples.** *J Infect Dis* 2012; 205:358–365.
24. Kiwanuka N, Laeyendecker O, Quinn TC, Wawer MJ, Shepherd J, Robb M, et al. **HIV-1 subtypes and differences in heterosexual HIV transmission among HIV-discordant couples in Rakai, Uganda.** *AIDS* 2009; 23:2479–2484.
25. Malhotra R, Hu L, Song W, Brill I, Mulenga J, Allen S, et al. **Association of chemokine receptor gene (CCR2-CCR5) haplotypes with acquisition and control of HIV-1 infection in Zambians.** *Retrovirology* 2011; 8:22.
26. Merino A, Malhotra R, Morton M, Mulenga J, Allen S, Hunter E, et al. **Impact of a functional KIR2DS4 allele on heterosexual HIV-1 transmission among discordant Zambian couples.** *J Infect Dis* 2011; 203:487–495.
27. Modjarrad K, Chamot E, Vermund SH. **Impact of small reductions in plasma HIV RNA levels on the risk of heterosexual transmission and disease progression.** *AIDS* 2008; 22:2179–2185.
28. Song W, He D, Brill I, Malhotra R, Mulenga J, Allen S, et al. **Disparate associations of HLA class I markers with HIV-1 acquisition and control of viremia in an African population.** *PLoS One* 2011; 6:e23469.
29. Chakraborty H, Sen PK, Helms RW, Vernazza PL, Fiscus SA, Eron JJ, et al. **Viral burden in genital secretions determines male-to-female sexual transmission of HIV-1: a probabilistic empiric model.** *AIDS* 2001; 15:621–627.
30. Wilson DP, Law MG, Grulich AE, Cooper DA, Kaldor JM. **Relation between HIV viral load and infectiousness: a model-based analysis.** *Lancet* 2008; 372:314–320.
31. Fraser C, Hollingsworth TD, Chapman R, De Wolf F, Hanage WP. **Variation in HIV-1 set-point viral load: epidemiological analysis and an evolutionary hypothesis.** *Proc Natl Acad Sci U S A* 2007; 104:17441–17446.
32. Pinkerton SD. **Probability of HIV transmission during acute infection in Rakai, Uganda.** *AIDS Behav* 2008; 12:677–684.
33. Boily MC, Baggaley RF, Wang L, Masse B, White RG, Hayes RJ, et al. **Heterosexual risk of HIV-1 infection per sexual act: systematic review and meta-analysis of observational studies.** *Lancet Infect Dis* 2009; 9:118–129.
34. Powers KA, Poole C, Pettifor AE, Cohen MS. **Rethinking the heterosexual infectivity of HIV-1: a systematic review and meta-analysis.** *Lancet Infect Dis* 2008; 8:553–563.
35. Leynaert B, Downs AM, De Vincenzi I. **Heterosexual transmission of human immunodeficiency virus: variability of infectivity throughout the course of infection.** *Am J Epidemiol* 1998; 148:88–96.
36. Hugonnet S, Mosha F, Todd J, Mugeye K, Klokke A, Ndeki L, et al. **Incidence of HIV infection in stable sexual partnerships: a retrospective cohort study of 1802 couples in Mwanza Region, Tanzania.** *J Acquir Immune Defic Syndr* 2002; 30:73–80.
37. Carpenter LM, Kamali A, Ruberantwari A, Malamba SS, Whitworth JA. **Rates of HIV-1 transmission within marriage in rural Uganda in relation to the HIV sero-status of the partners.** *AIDS* 1999; 13:1083–1089.
38. Gisselquist D, Potterat JJ. **Questioning Wawer et al.'s estimated rate of sexual HIV transmission from persons with early HIV infections.** *J Infect Dis* 2005; 192:1497–1499[author reply 1499–1500].
39. Jacquez JA, Koopman JS, Simon CP, Longini IM Jr. **Role of the primary infection in epidemics of HIV infection in gay cohorts.** *J Acquir Immune Defic Syndr* 1994; 7:1169–1184.
40. Shiboski SC, Jewell NP. **Statistical-analysis of the time-dependence of HIV infectivity based on partner study data.** *J Am Stat Assoc* 1992; 87:360–372. <http://www.jstor.org/stable/2290266>.
41. Shiboski SC, Padian NS. **Epidemiologic evidence for time variation in HIV infectivity.** *J Acquir Immune Defic Syndr Hum Retrovirol* 1998; 19:527–535.
42. Ma ZM, Stone M, Piatak M Jr, Schweighardt B, Haigwood NL, Montefiori D, et al. **High specific infectivity of plasma virus from the preramp-up and ramp-up stages of acute simian immunodeficiency virus infection.** *J Virol* 2009; 83:3288–3297.
43. Brenner BG, Roger M, Routy JP, Moisi D, Ntemgwana M, Matte C, et al. **High rates of forward transmission events after acute/early HIV-1 infection.** *J Infect Dis* 2007; 195:951–959.
44. Pao D, Fisher M, Hue S, Dean G, Murphy G, Cane PA, et al. **Transmission of HIV-1 during primary infection: relationship to sexual risk and sexually transmitted infections.** *AIDS* 2005; 19:85–90.
45. Granich RM, Gilks CF, Dye C, De Cock KM, Williams BG. **Universal voluntary HIV testing with immediate antiretroviral therapy as a strategy for elimination of HIV transmission: a mathematical model.** *Lancet* 2009; 373:48–57.
46. Hayes RJ, White RG. **Role of acute infection in HIV transmission.** *Lancet* 2011; 378:1913–1914[author reply 1914–1915].
47. Hargreaves JR, Slaymaker E, Fearon E, Howe LD. **Changes over time in sexual behaviour among young people with different levels of educational attainment in Tanzania.** *J Int AIDS Soc* 2012; 15 (Suppl 1):1–7.
48. Brown JL, Sales JM, DiClemente RJ, Salazar LF, Venable PA, Carey MP, et al. **Predicting discordance between self-reports of sexual behavior and incident sexually transmitted infections with African American female adolescents: results from a 4-city study.** *AIDS Behav* 2012; 16:1491–1500.
49. Novitsky V, Essex M. **Using HIV viral load to guide treatment-prevention interventions.** *Curr Opin HIV AIDS* 2012; 7:117–124.