



The effects of catecholamine depletion on the neural response to fearful faces in remitted depression

Journal:	<i>The International Journal of Neuropsychopharmacology</i>
Manuscript ID:	IntJNP-13-0385.R1
Manuscript Type:	Regular Research Article
Date Submitted by the Author:	15-Jan-2014
Complete List of Authors:	Homan, Philipp; University Hospital of Psychiatry, University of Bern, Department of Psychiatric Neurophysiology Drevets, Wayne; Laureate Institute for Brain Research, Hasler, Gregor; University of Bern, Psychiatry
Research Focus: Choose one or more (maximum 5) that best describe the research focus of your paper:	Challenge studies < Translational, Brain imaging – functional < Translational
Keywords: Enter up to 5 (minimum 3) keywords that best reflect the research reported in your paper.:	PET, fearful faces, DLPFC, catecholamines, depression

To be submitted as a Regular Research Article to Int J Neuropsychopharmacol

The effects of catecholamine depletion on the neural response to fearful faces in remitted depression

Philipp Homan^a, MD, PhD, Wayne C. Drevets^{b,c}, MD, Gregor Hasler^{d,*}, MD

^a Department of Psychiatric Neurophysiology, University Hospital of Psychiatry, University of Bern, Switzerland

^b Laureate Institute for Brain Research, Tulsa, OK, 74136; ^c Janssen Pharmaceuticals Research & Development, Titusville, NJ;

^d University Hospital of Psychiatry, University of Bern, Switzerland

Short title: Catecholamine depletion and fearful faces

*Corresponding author:

Gregor Hasler

University Hospital of Psychiatry, University of Bern

Bolligenstrasse 111, 3000 Bern, Switzerland.

Tel.: +41 31 930-9543; fax: +41 31 930 99 21.

gregor.hasler@puk.unibe.ch

Abstract word count: 261

Body word count: 5012

References: 52

Tables: 1

Figures: 4

Abstract

Recent evidence suggests that increased psychophysiological response to negatively valenced emotional stimuli found in major depressive disorder (MDD) may be associated with reduced catecholaminergic neurotransmission. Fourteen unmedicated, remitted subjects with MDD (RMDD) and 13 healthy control subjects underwent catecholamine depletion with oral α -methyl-*para*-tyrosine (AMPT) in a randomized, placebo-controlled, double-blind crossover trial. Subjects were exposed to fearful (FF) and neutral faces (NF) during a scan with $H_2^{15}O$ positron emission tomography to assess the brain-catecholamine interaction in brain regions previously associated with emotional face processing. Treatment with AMPT resulted in significantly increased, normalized cerebral blood flow (CBF) in the left inferior temporal gyrus (ITG) and significantly decreased CBF in the right cerebellum across conditions and groups. In RMDD, flow in the left posterior cingulate cortex (PCC) increased significantly in the FF compared to the NF condition after AMPT but remained unchanged after placebo, whereas healthy controls showed a significant increase under placebo and a significant decrease under AMPT in this brain region. In the left dorsolateral prefrontal cortex (DLPFC), flow decreased significantly in the FF compared to the NF condition under AMPT and increased significantly under placebo in RMDD, whereas healthy controls showed no significant differences. Differences between AMPT and placebo of within-session changes in worry-symptoms were positively correlated with the corresponding changes in CBF in the right subgenual prefrontal cortex in RMDD. In conclusion, this study provided evidence for a catecholamine-related modulation of the neural responses to fearful face expressions in the left PCC and the left DLPFC in subjects with RMDD that might constitute a persistent, trait-like abnormality in MDD.

Keywords: PET; fearful faces; DLPFC; PCC; depression; catecholamines

Introduction

Altered processing of negatively valenced emotional stimuli has been consistently found in MDD. However, the neurobiological underpinnings and the pathogenetic relevance of abnormal reactions to such stimuli in MDD have not yet been fully elucidated. One established method to examine the processing of negative stimuli involves the exposure to pictures of human faces portraying fearful expressions. Previous research found that the response to fearful faces in MDD is associated with increased activity in brain regions associated with emotional evaluation (i.e., amygdala, orbitofrontal cortex (OFC), striatum) (Cavassila et al., 1999; Drevets, 2000; Fales et al., 2008) and decreased activity in regions associated with emotional regulation (i.e., dorsolateral prefrontal cortex (DLPFC), anterior cingulate cortex (ACC)) (Johnstone et al., 2007; Siegle et al., 2007; Fales et al., 2008). These findings appear partly compatible with a model of emotional processing that involves top-down regulation of limbic and subcortical structures associated with rapid processing of emotionally salient stimuli (Mayberg, 1997; Phillips et al., 2008) by the DLPFC and OFC (Ochsner et al., 2002; Phillips et al., 2008). Interestingly, it has been found that a single dose of reboxetine, a norepinephrine reuptake inhibitor, reversed the altered response to happy faces in depressed subjects, suggesting that catecholamines are involved in the modulation of emotional processing at a very early stage in antidepressant treatment, before symptom changes are evident (Harmer et al., 2009). These data taken together with evidence that catecholamines affect functions of the limbic-cortical-striatal-pallidal-thalamic circuitry implicated in the pathophysiology of MDD (Hasler et al., 2008; Price and Drevets, 2010), suggest that examination of brain-catecholamine interactions in cerebral structures associated with the differential neural response to fearful face stimuli in MDD subjects versus healthy controls may illuminate the neural bases of the negative emotional processing biases associated with MDD (Victor et al., 2010; Harmer et al., 2011). The current study aimed to address this goal without the potential confound of a medication bias (Stuhrmann et al., 2011) by

assessing unmedicated, fully remitted patients with MDD during exposure to neutral and fearful facial expressions.

To study the brain-catecholamine interaction, subjects received either placebo or alpha-methyl-para-tyrosine (AMPT) (Berman et al., 1999) before the $H_2^{15}O$ -positron emission tomography (PET) scan. AMPT competitively inhibits tyrosine hydroxylase, the rate-limiting enzyme in catecholamine synthesis, and is therefore able to decrease catecholaminergic neurotransmission by depleting central dopamine and norepinephrine stores (Stine et al., 1997; Verhoeff et al., 2003). Given that previous research found an increased activity in subcortical brain regions and a decreased top-down control by the DLPFC in response to fearful faces, we hypothesized that catecholamine depletion with AMPT but not placebo would result in an increased *behavioral* response to fearful faces in RMDD but not in healthy controls, and in an increased hemodynamic response in a limbic-striatal-pallidal-thalamic circuit along with a decreased response in the DLPFC.

Methods

The current study was part of a larger project that investigated the role of catecholamines in the pathogenesis of MDD. To this end, we assessed the behavioral, neuropsychological and neurobiological response to catecholamine depletion in subjects with low and high risk of depression. The neuropsychological assessment included the behavioral and hemodynamic responses to fearful faces. Fearful faces were used to activate the stress system that is thought to be overactive in depression. Specifically, using a double-blind, placebo-controlled, crossover design, fully remitted, unmedicated participants with MDD (RMDD) were studied under catecholamine depletion as well as under placebo administration. During the depletion procedures, cerebral blood flow (CBF) was assessed using $[^{15}O]H_2O$ positron emission tomography (PET) to measure the neural response to emotionally valenced stimuli.

Afterwards, the study participants also underwent [¹⁸F]-fluorodeoxyglucose PET scanning to compare metabolic correlates of catecholamine depletion between RMDD subjects and healthy controls and neuropsychological testing, from which the results were reported previously (Hasler et al., 2008; Hasler et al., 2009).

Participants

The experimental group comprised individuals aged 18 to 56 years who met DSM-IV criteria for MDD in full remission (RMDD). The healthy controls had no personal history of any psychiatric disorder and no family history of a major psychiatric disorder in first-degree relatives. Diagnosis was established using the Structured Clinical Interview for DSM-IV (First, 2001) and confirmed by an unstructured interview with a psychiatrist. The subjects were recruited through the outpatient clinical services of the National Institute of Mental Health and by advertisements in local newspapers and posters on the National Institutes of Health (NIH) campus. Exclusion criteria included major medical illnesses, pregnancy, psychotropic drug exposure (including nicotine) within 3 months, substance abuse within one year, lifetime history of substance dependence, psychiatric disorders other than MDD, and structural brain abnormalities on MRI. Inclusion criteria required that RMDD subjects had remained in remission without medications for at least 3 months and had manifested depression onset before 40 years of age. Written informed consent was obtained as approved by the Combined Neuroscience Institutional Review Board of the NIH.

Experimental design

Using a randomized, double-blind, placebo-controlled crossover design, subjects underwent two identical sessions separated by at least one week, in which they received either a body-weight adjusted AMPT dose or placebo (see (Hasler et al., 2008) for details). To reduce risk of adverse reactions, a body weight-adjusted AMPT dose of 40 mg/kg of body weight orally, to a maximum of 4 g, over 22 hours was used.

Each session took 3 days and was performed on an inpatient basis at the NIH Clinical Center. To reduce the risk of crystalluria during AMPT administration, subjects received sodium bicarbonate, drank at least 2 L of water daily, and underwent urinalysis twice daily. During the PET scan, blocks of fearful face (FF) stimuli were alternated with control scans in which the faces showed a neutral expression (NF). Behavioral ratings included a visual analog scale (VAS) of 3 different emotional dimensions (anxiety, sadness, worry). Ratings were conducted inside the camera by short interviews with the research subjects after a series of faces with the same emotional expression were presented, i.e., at the beginning of the interval between blood flow scans. In addition, as a pharmacodynamic assessment to verify target engagement within the central nervous system, the effect of AMPT on serum prolactin levels was measured.

Statistical analysis of behavioral data

To account for the repeated measurements in the same subjects, full factorial linear mixed models with restricted maximum likelihood estimations were used to examine the effects of the primary and secondary outcome measures. Schwarz's Bayesian criteria were used to determine the best fitting covariance structure for each set of measures in cases where the typical compound symmetry approach used by ANOVA did not provide the optimal structure for the extant data. The effects of treatment, diagnosis, and stimulus on the VAS scores were assessed with linear mixed models with a first-order autoregressive covariance structure. The effects of treatment, diagnosis, and time on prolactin levels were assessed with linear mixed models with a first-order autoregressive covariance structure. Subject number and treatment sequence were included as random effects in all models. Post hoc t-tests involved a Tukey-correction for multiple comparisons. The significance thresholds for these contrasts were set at $\alpha = 0.05$, two-tailed.

SAS 9.3 (SAS Institute Inc., Cary, NC, USA) was used for all analyses. The means of the data are reported with their associated standard deviations.

[¹⁵O]H₂O-PET imaging

The PET scanning was performed during the expected nadir of plasma catecholamine levels on the second day of AMPT administration. Subject preparation consisted of intravenous catheterization, and immobilization of the head using a thermoplastic mask. PET scans were acquired using a GE Advance (35 contiguous slices with 4.25 mm plane separation; 3D resolution= 6 to 7 mm FWHM, 3D acquisition mode).(Townsend, 1998) First, a transmission scan (about 8-min) using rotating rods of ⁶⁸Ge/⁶⁸Ga with electronic windowing around the rods to minimize scatter was obtained for attenuation correction of the emission scans during the tracer uptake period.(Huang et al., 1979) Following transmission scan, 5 CBF scans were acquired at an 8-min inter-scan interval using bolus injection of 10 mCi of H₂¹⁵O. To provide an anatomical framework for analysis of the PET images, structural MRI scans were acquired with a 3.0-T scanner (Signa; GE Medical Systems) and a T1-weighted pulse sequence (magnetization prepared rapidly acquired gradient echo [MP-RAGE]; voxel size, 0.9 × 0.9 × 1.2 mm).

Behavioral Task

Grey-scale, static face picture stimuli (Ekman, 1976) modified as previously described by Morris et al. (1996) were presented during each scan. These stimuli depicted the faces of actors and actresses displaying multiple distinct emotional expressions. The photographs were digitized and modified by cropping out hair, neck, and ears, achieving isoluminance across stimuli, and centering each face's eyes so they appeared in a uniform location on the computer monitor, as described and illustrated in Morris and colleagues (Morris et al., 1996; Morris et al., 1998). The photographed subject's eyes provide a natural fixation point for the viewers' gaze. Since we were only interested in determining the responses to a block

of emotionally expressive faces that are of a single emotion, within an individual scan all face stimuli shown were of the same emotional valence, and face pictures depicting different grades of a particular emotion (e.g., moderately versus markedly fearful) were displayed in random order within a particular scan. Scans containing blocks of fearful face (FF) stimuli were alternated with control scans in which the faces showed a neutral expression (NF). The fearful faces were presented in two different blood flow scans. To reduce order effects, the sequence in which either neutral or fearful face types were presented was counterbalanced across subjects. The task instructions were the same for all scans, as subjects were asked to indicate the gender of each face by pressing the left button on a two-button fiberoptic key pad for male and the right for female (Morris et al., 1996). Stimulus presentation was initiated approximately 7 sec before the start of the emission scan to minimize the amount of habituation that may occur prior to the arrival of the ^{15}O bolus to the head (the fixation point CBF scan that precedes the experimental scans permitted estimation of the lag time between ^{15}O]H $_2$ O injection and the rise in radioactive counts from the head). The face stimuli were displayed at one Hz on a Macintosh computer monitor using Super LabTM software. This frequency was selected because in pilot studies it permitted adequate time to assign gender, and the short stimulus duration minimized the likelihood of scanning eye movements. Eye movement was not evident during random checks during stimulus presentation, as at the 1 Hz rate of stimulus presentation, the experimental subject's eyes usually remain fixed on the pictured subject's eyes and do not scan the faces. Starting with a fixation point control (Fx Pt), the subjects were randomized to one of two possible scan sequences within each group: 1. Fx Pt-FF-NF-FF-NF, 2. Fx Pt-NF-FF-NF-FF.

Analysis of PET image data

Matlab (Matlab version 7, release 2010b; The MathWorks, Inc., Natick, MA, USA), SPM8 (Wellcome Trust Centre for Imaging, London, England; www.fil.ion.ucl.ac.uk/spm8), and the toolbox aslm (Homan

et al., 2012) was used for the image analysis. The PET images were co-registered to each subject's structural image, spatially normalized to the Montreal Neurological Institute brain template and smoothed using a 6-mm gaussian smoothing kernel. The statistical models that were applied to compare the CBF across stimuli, treatments and diagnostic groups included the main effects of fearful versus neutral stimuli, placebo versus drug, patients versus healthy controls, and subject. In a first step, the flexible factorial model in SPM8 was used to model each subject's response to fearful and neutral stimuli for AMPT and placebo, respectively. The contrast images then were used in a second level analysis, in which the 3-way-interaction (stimulus-by-treatment-by-diagnosis) was assessed in a two-sample t-test of both diagnostic groups (i.e., RMDD and healthy controls). A priori hypotheses were tested by assessing changes in the predefined ROI including the amygdala, dorsolateral prefrontal cortex (DLPFC), medial and lateral orbitofrontal cortex (OFC), hippocampus, anteroventral striatum (AVS), thalamus, posterior cingulate cortex (PCC) and the subgenual and pregenual anterior cingulate cortex (ACC). These ROI were selected according to the findings and model of Drevets and Price (Drevets et al., 1992; Price and Drevets, 2010) using anatomic boundaries and methods as described by Drevets et al. (2001) and Neumeister et al. (2004). To assess changes in the normalized blood flow the regional tissue radioactivity was scaled to the global activity, and then compared across conditions using the Small Volume Analysis option within SPM8 software to evaluate the significance of group differences in the contrasts obtained in the second level analysis.

In order to assess AMPT-induced CBF changes across the whole brain, an exploratory voxelwise analysis of the PET data also was performed *post hoc*. Additional correlational analyses were performed using the behavioral VAS scores for anxiety, sadness and worry as covariates of interest in the second level analysis. Therefore, the difference between the within-session behavioral score change between the FF and the NF condition for each subject in the AMPT session versus the placebo session was calculated to

reflect the magnitude of the AMPT-induced effect on symptom ratings. In ROI for which we had a priori hypotheses, results were small-volume corrected for familywise error, and reported at a voxel-level threshold of $p < 0.05$. Additional clusters derived from the whole-brain analysis are reported with a voxel-level threshold of $p < 0.05$, whole-brain corrected for familywise error. For significant regions, beta estimates of regional CBF were extracted in order to calculate post-hoc tests and to depict the direction of the 3-way-interaction.

Results

The clinical and demographic characteristics of the subject samples are detailed in Table 1.

From 28 subjects, 14 subjects with RMDD and 13 healthy controls were included in the study. One female subject with RMDD did not participate in the [^{15}O]H $_2$ O-PET imaging. The 13 healthy volunteers (12 females; mean \pm standard deviation [SD] age = 39 ± 10 years) were not significantly different from the 14 RMDD subjects (13 females; mean \pm SD age = 38.1 ± 11 years) with respect to gender ratio and mean age.

Behavioral Results

Behavioral results of catecholamine depletion compared to placebo in RMDD subjects and healthy controls as measured with the Montgomery-Åsberg Depression Rating Scale (MADRS), Hamilton Rating Scale for Depression (HAM-D), and Beck Anxiety Inventory (BAI) have been published previously (Hasler et al., 2008). Briefly, depressive symptoms were increased after the administration of AMPT to a greater extent in subjects with RMDD than in healthy controls, and anxiety ratings also increased in RMDD under catecholamine depletion, whereas the corresponding changes in healthy subjects were statistically not significant.

Figure 1 shows VAS scores of anxiety, sadness and worry categorized by stimulus, treatment and diagnosis. Anxiety scores as measured after each condition using the VAS were higher in the FF compared to the NF conditions in the whole group ($F [1, 203] = 6.09, p = 0.01$), and were significantly higher in the RMDD subjects compared to the controls ($F [1, 203] = 12.58, p = 0.0005$) as well as under AMPT administration compared to placebo ($F [1, 203] = 12.84, p = 0.0004$). The stimulus-by-diagnosis interaction also was significant ($F [1, 203] = 7.81, p = 0.006$); this interaction was attributable to higher anxiety scores in the FF condition in RMDD subjects compared to controls ($t [1, 203] = 4.19, p = 0.0002$) and in the FF compared to the NF conditions in RMDD ($t [1, 95] = 3.76, p = 0.001$). The ratings of sadness were higher in the FF compared to the NF conditions in the whole group ($F [1, 203] = 8.6, p = 0.004$), and there was a stimulus-by-diagnosis interaction evident ($F [1, 203] = 12.98, p = 0.0004$) that was attributable to higher sadness in the FF compared to the NF condition in RMDD ($t [1, 203] = 4.67, p < 0.0001$). The VAS scores of worry were higher in RMDD subjects compared to controls ($F [1, 203] = 4.83, p = 0.03$).

The central effect of AMPT was evidenced by an increase of serum prolactin levels following catecholamine depletion ($F [1, 25] = 361.87, p < 0.0001$), and no effect of diagnosis ($p = 0.69$) or treatment-by-diagnosis interaction ($p = 0.97$) were evident.

[¹⁵O]H₂O-PET Imaging Results: ROI analysis

Figure 1 shows the ROI analysis of the PCC, where a significant stimulus-by-treatment-by-diagnosis interaction was evident in the PCC cortex corresponding to Brodmann area 30, situated on the posterior cingulate gyrus and the anterior-most aspect of the cuneate gyrus (peak: $x, y, z = -8, -60, 8$; cluster-size: 38 voxels; $t [25] = 5.65, p < 0.05$, small-volume corrected for familywise error). This interaction was attributable to an increased regional CBF in the PCC as response to fearful faces under AMPT compared

to placebo for RMDD and a respective decrease in healthy controls. The ROI analysis of the DLPFC revealed a significant stimulus-by-treatment-by-diagnosis interaction in the left dorsolateral prefrontal cortex (Brodmann area 46; locus for peak voxel t-value: $x, y, z = -54, 26, 28$; cluster-size: 25 voxels; $t [25] = 6.37, p < 0.05$, small-volume corrected for familywise error). This interaction was attributable to a decreased regional flow with the fearful faces under AMPT compared to an increased regional flow with the fearful faces under placebo for RMDD that was not evident in healthy controls. No interaction was found in the other ROI (amygdala, medial and lateral orbitofrontal cortex (OFC), hippocampus, AVS, thalamus, and ACC).

PET imaging results: voxelwise analysis

After AMPT administration, blood flow was higher in the left inferior temporal gyrus (ITG), Brodmann area 20 (peak: $x, y, z = -54, -11, -28$; $t [26] = 7.47$; $p = 0.004$, corrected for familywise error) and lower in the anterior lobe of the right cerebellum (peak: $x, y, z = 28, -42, -38$; $t [26] = 7.77$, $p = 0.002$, corrected for familywise error) compared to placebo across conditions and groups. Testing for a stimulus-effect, a treatment-by-diagnosis interaction, a stimulus-by-diagnosis interaction, a stimulus-by-treatment interaction, and a stimulus-by-treatment-by-diagnosis interaction did not reveal any significant results.

PET Imaging Results: Correlational Analysis

Additional correlational voxelwise analyses were performed including the difference (AMPT versus placebo) of within-session (FF versus NF) changes of anxiety, sadness and worry VAS scores as covariates. There was a positive association of the AMPT-induced, within-session change of worry VAS score and the corresponding CBF change in the right subgenual prefrontal cortex (corresponding to Brodmann area 10/32 (Ongur et al., 2003; Price and Drevets, 2010); peak voxel t-value at: $x, y, z = 6, 34, -14$; $t [24] = 6.68$; $p < 0.05$, corrected for familywise error; Figure 4). Re-computing the correlational

analysis for each group separately revealed that RMDD showed a significant positive correlation of the AMPT-induced, within-session change of worry VAS score and the corresponding CBF change ($r = 0.89$, $p < 0.0001$) that was only present at a trend-level in controls ($r = 0.48$, $p = 0.09$).

Discussion

To our knowledge, this is the first study to compare the effect of catecholamine depletion on the neural response to fearful versus neutral faces in unmedicated RMDD and healthy controls. Catecholamine depletion was associated with behavioral and neurophysiological effects that in some cases were similar and in others were distinct in the RMDD sample relative to the control sample. The administration of AMPT increased anxiety in the entire sample, and to a greater extent in RMDD. AMPT-administration compared to placebo resulted in a higher CBF in the left inferior temporal gyrus and a lower CBF in the anterior lobe of the right cerebellum across conditions and groups. In the left PCC flow increased in the FF compared to the NF condition after AMPT but remained unchanged after placebo in RMDD, whereas healthy controls showed an increase under placebo and a decrease under AMPT. In the left DLPFC, flow decreased in the FF compared to the NF condition under AMPT and increased under placebo in RMDD, whereas healthy controls showed no such differences. Differences between AMPT and placebo of within-session changes in worry symptoms were positively correlated with the corresponding changes in CBF in the right subgenual prefrontal cortex in RMDD.

The current study applied catecholamine depletion with AMPT to assess the brain-catecholamine interaction of cortical structures responding to fearful emotional stimuli. Consistent with our a-priori hypothesis, the behavioral responses were higher levels of anxiety in RMDD compared to controls in response to fearful faces, supporting previous findings that found that the risk for MDD is associated with an increased sensitivity to fearful stimuli (Bhagwagar et al., 2004; Neumeister et al., 2006; Norbury et al.,

2010). However, since both RMDD subjects and controls showed more anxiety under AMPT compared to placebo, the change in anxiety under catecholamine depletion did not have a differential effect on RMDD in this study sample.

The behavioral response to fearful faces was associated with regional hemodynamic responses. In two regions of the limbic-cortical-striatal-pallidal-thalamic circuitry where we had *a-priori* hypotheses, AMPT-induced changes in blood flow between the FF and NF conditions differed significantly between groups. With respect to the PCC, monosynaptic anatomical connections have been described previously between this region and the rostral ACC (Saleem et al., 2008; Price and Drevets, 2010), which extends into the subgenual prefrontal cortex region implicated herein and forms part of the medial prefrontal (visceromotor) network (Price and Drevets, 2010) implicated in the pathophysiology of depression (Drevets et al., 2002; Neumeister et al., 2004; Hasler et al., 2008), as well as in the processing of self-consciousness (Kjaer et al., 2002; Lou et al., 2004) involved in the “default mode network” that has been shown to be aberrant in depression (Sheline et al., 2009). Furthermore, studies examining neural face processing found less functional connectivity of the precuneus and the OFC in patients with MDD (Frodl et al., 2010) and aberrant neural responses in this extrastriatal area (Lawrence et al., 2004; Fu et al., 2007) that might be mediated by interconnections with the amygdala (Haxby et al., 2002; Phillips et al., 2003). Inconsistent with our *a-priori* hypothesis, no difference in the amygdala response to fearful faces was found in the current study. Notably, the functional connectivity of the amygdala response to negatively valenced faces, which previously was reported to be abnormal in depression by Fu et al. (2007), could not be assessed using PET data due to the limited numbers of images obtained per condition. Fu and colleagues also found that the PCC showed decreased activation in response to happy faces in patients with MDD that improved significantly upon treatment with antidepressants. However, in contrast to our study, the authors assessed the response to happy faces, and the patients were treated with fluoxetine, a

selective serotonin reuptake inhibitor, which limits the comparability to our study. The study populations in the studies by Lawrence and colleagues and Frodl and colleagues comprised subjects with MDD who were receiving medications at the time of scanning (Lawrence et al., 2004; Frodl et al., 2010), which also limits the comparability to our study. Due to our different study design involving subjects with RMDD, our study adds to the aforementioned findings by showing that the distinct CBF-response compared to healthy controls may reflect a risk factor for MDD that is associated with catecholaminergic neurotransmission.

The reduction in CBF in the left DLPFC in the FF compared to the NF condition under AMPT in RMDD implicates a region within the prefrontal cortex that has been associated with voluntary and automatic emotional processing (reviewed in Price and Drevets (2010)). Previous PET studies found decreased resting-activity in the left DLPFC in individuals with MDD (Baxter et al., 1989; Bench et al., 1993), and more recent functional magnetic resonance imaging (fMRI) studies of emotional face processing in MDD have shown reduced DLPFC activity in response to negative facial expressions (Fu et al., 2004; Surguladze et al., 2005; Siegle et al., 2007). Notably, most of these findings have been localized to the left hemisphere, in line with a proposed hemispheric localization of emotion (Davidson, 1992) and lesion-based studies in MDD (Shimoda and Robinson, 1999). In addition, previous neuroimaging studies in RMDD have confirmed abnormalities in the left DLPFC and therefore suggest that alterations in this region might be a trait marker in MDD (Liotti et al., 2002; Neumeister et al., 2006; Norbury et al., 2010; Victor et al., 2010; Kerestes et al., 2012), although those studies included medicated subjects (Liotti et al., 2002) or subjects with co-morbid illnesses (Neumeister et al., 2006; Norbury et al., 2010), which limits conclusions that can be drawn about trait markers of MDD. A recent study in unmedicated MDD subjects reported reduced hemodynamic activity in response to fearful faces in the left DLPFC (Kerestes et al., 2012), which is supported by our finding and extended by the observation that the increase in regional

CBF in the left DLPFC in response to FF under placebo that was inverted by AMPT might reflect a top-down control of anxiogenic stimuli depending on catecholaminergic neurotransmission.

The fact that healthy controls showed a decreased flow under catecholamine depletion when presented fearful compared to neutral faces, whereas subjects with RMDD showed an increased flow when presented fearful compared to neutral faces, might indicate that brain activity in the PCC can be interpreted as compensatory brain activity that would usually maintain remission in RMDD but is vulnerable to a depletion of catecholamines. Compensatory brain activity has been suggested as a countermeasure used by the brain to cope with depression (Lewis, 2000; Norbury et al., 2010; Kessler et al., 2011), i.e., "an augmentation of existing circuits to (unsuccessfully) cope with the disease" (Kessler et al., 2011). The fact that AMPT led to a „normalization“ of flow in the DLPFC suggests that this brain region shows catecholamine-dependent activity associated with remission in RMDD.

Finally, there was an association of the behavioral and the neural response to fearful faces that was evidenced by the positive correlation of within-session changes in worry-symptoms and the corresponding CBF changes in a small locus within the right medial frontal gyrus (MFG). The greater the difference in CBF in the right MFG between the FF and the NF tasks and between the AMPT and placebo conditions, the more worry-symptoms were expressed by the RMDD subjects. The right MFG may be viewed as an interface mediating prefrontal and limbic neurotransmission within the limbic-cortical-striatal-pallidal-thalamic circuit implicated in the pathophysiology of MDD (Hasler et al., 2008; Price and Drevets, 2010). Specifically, our finding suggests that the risk for MDD reflected by an increase in worry-symptoms is associated with an interaction of limbic and cortical regions mediated by increased activity in the right MFG.

The current study had several limitations. The study sample was relatively small and predominantly consisted of female subjects. Since we did not include an additional condition with emotional stimuli

except fearful faces we cannot rule out that the observed emotion effects represent general effects for any emotional stimuli. Next, our method of PET imaging did not allow us to assess central catecholamine concentrations, and we did not measure plasma or urinary catecholamine levels to monitor the magnitude of catecholamine depletion achieved. Since there is no consistent association of central and peripheral catecholamine levels, we assessed the central AMPT-effect indirectly by measuring serum prolactin levels, which is the standard method to assess the effect of central catecholamine depletion (Hasler et al., 2008; Hasler et al., 2009). An additional limitation is the relatively large range of remission-time in the RMDD sample, a possible confounder that may have had an impact on catecholaminergic neurotransmission in the brain regions found in the current study, for instance for reasons of age-related declines in CBF. However, we tried to take this possible confounder into account by repeating the SPM analysis including remission-time in a correlational analysis in RMDD only without any significant results using a significance threshold of $p < 0.05$ and a familywise error correction for multiple comparisons. We also repeated the SMP analysis with age as a covariate of no interest in the whole sample which did not alter any of the results. In addition, no correlations were found between age and CBF in a voxelwise analysis using a significance threshold of $p < 0.05$ and a familywise error correction for multiple comparisons. To address the question of how the AMPT-induced depressive symptoms might have influenced the hemodynamic response to the face-paradigm, we calculated additional voxelwise correlational analyses in SPM using the MADRS, HAMD, and BAI scores as covariates and did not find any significant results at a significance threshold of $p < 0.05$ and a familywise error correction for multiple comparisons. This suggests that the hemodynamic response to the face-paradigm was not associated with the AMPT-induced depressive symptoms. Finally, the AMPT-effect on the regional CBF response to emotional stimulus processing was relatively subtle, and no association with mood symptoms was evident in the corresponding brain regions. It is noteworthy, however, that the reversal of altered neural responses

to affective face expression in unmedicated individuals with MDD occurs early in the course of antidepressant treatment, before symptom changes are evident (Harmer et al., 2009), suggesting that clinically relevant neural responses precede overt changes in symptoms.

The current study had several strengths that merit comment. First, the PET- ^{15}O -water method enabled us to study the AMPT-effect on normalized (i.e., regional/global) CBF, which is coupled to normalized glucose metabolism. We showed that the administration of AMPT resulted in a CBF increase in the left ITG and a decrease in the anterior lobe of the right cerebellum. Second, the use of NF as the control-condition allowed us to specifically assess the processing of facially expressed fear by controlling for nonspecific aspects of processing face stimuli. Third, the fact that we induced a transient depressive relapse with AMPT in RMDD allowed us to interpret our findings as risk-factors for a depressive relapse. Finally the participants were selected in the unmedicated, remitted phase of MDD, so that nonspecific effects of antidepressant drugs or of depressive episodes (e.g., related to chronic stress or sleep deprivation) were excluded.

In conclusion, the current study provided evidence for a catecholamine-related modulation of the neural responses in the left PCC and the left DLPFC to fearful face expressions in subjects with RMDD that might constitute a persistent, trait-like abnormality in MDD.

Acknowledgements

This research was supported by the Intramural Research Program of the National Institutes of Mental Health and the University Hospital and Hermann Klaus Foundation, Zurich. We are grateful to Y. Morishima for advice on the PET imaging analysis.

Homan et al.

Catecholamine depletion and fearful faces

Financial Disclosures

All authors report no biomedical financial interests or potential conflicts of interest with respect to the content of this manuscript. WCD is currently an employee of Janssen Pharmaceuticals of Johnson & Johnson, Inc.

Proof For Review

References

- Baxter LR, Jr., Schwartz JM, Phelps ME, Mazziotta JC, Guze BH, Selin CE, Gerner RH, Sumida RM (1989) Reduction of prefrontal cortex glucose metabolism common to three types of depression. *Arch Gen Psychiatry* 46:243-250.
- Bench CJ, Friston KJ, Brown RG, Frackowiak RS, Dolan RJ (1993) Regional cerebral blood flow in depression measured by positron emission tomography: the relationship with clinical dimensions. *Psychol Med* 23:579-590.
- Berman RM, Narasimhan M, Miller HL, Anand A, Cappiello A, Oren DA, Heninger GR, Charney DS (1999) Transient depressive relapse induced by catecholamine depletion: potential phenotypic vulnerability marker? *Arch Gen Psychiatry* 56:395-403.
- Bhagwagar Z, Cowen PJ, Goodwin GM, Harmer CJ (2004) Normalization of enhanced fear recognition by acute SSRI treatment in subjects with a previous history of depression. *Am J Psychiatry* 161:166-168.
- Cavassila S, Deval S, Huegen C, Van Ormondt D, Graveron-Demilly D (1999) The beneficial influence of prior knowledge on the quantitation of in vivo magnetic resonance spectroscopy signals. *Invest Radiol* 34:242-246.
- Davidson RJ (1992) Anterior cerebral asymmetry and the nature of emotion. *Brain Cogn* 20:125-151.
- Drevets WC (2000) Neuroimaging studies of mood disorders. *Biol Psychiatry* 48:813-829.
- Drevets WC, Bogers W, Raichle ME (2002) Functional anatomical correlates of antidepressant drug treatment assessed using PET measures of regional glucose metabolism. *Eur Neuropsychopharmacol* 12:527-544.
- Drevets WC, Videen TO, Price JL, Preskorn SH, Carmichael ST, Raichle ME (1992) A functional anatomical study of unipolar depression. *J Neurosci* 12:3628-3641.

Homan et al.

Catecholamine depletion and fearful faces

- Drevets WC, Gautier C, Price JC, Kupfer DJ, Kinahan PE, Grace AA, Price JL, Mathis CA (2001) Amphetamine-induced dopamine release in human ventral striatum correlates with euphoria. *Biol Psychiatry* 49:81-96.
- Ekman PaFWV (1976) *Pictures of Facial Affect*. Palo Alto: Consulting Psychologists.
- Fales CL, Barch DM, Rundle MM, Mintun MA, Snyder AZ, Cohen JD, Mathews J, Sheline YI (2008) Altered emotional interference processing in affective and cognitive-control brain circuitry in major depression. *Biol Psychiatry* 63:377-384.
- First M, Spitzer, RL, Williams, JBW (2001) *Structured Clinical Interview for DSM-IV-TR Axis 1 Disorders, Research Version, Patient Edition (SCID-I/P)*. New York State Psychiatric Institute: Biometrics Research.
- Frodl T, Bokde AL, Scheuerecker J, Lisiecka D, Schoepf V, Hampel H, Moller HJ, Bruckmann H, Wiesmann M, Meisenzahl E (2010) Functional connectivity bias of the orbitofrontal cortex in drug-free patients with major depression. *Biol Psychiatry* 67:161-167.
- Fu CH, Williams SC, Brammer MJ, Suckling J, Kim J, Cleare AJ, Walsh ND, Mitterschiffthaler MT, Andrew CM, Pich EM, Bullmore ET (2007) Neural responses to happy facial expressions in major depression following antidepressant treatment. *Am J Psychiatry* 164:599-607.
- Fu P, Sodian R, Luders C, Lemke T, Kraemer L, Hubler M, Weng Y, Hoerstrup SP, Meyer R, Hetzer R (2004) Effects of basic fibroblast growth factor and transforming growth factor-beta on maturation of human pediatric aortic cell culture for tissue engineering of cardiovascular structures. *ASAIO J* 50:9-14.
- Harmer CJ, Cowen PJ, Goodwin GM (2011) Efficacy markers in depression. *J Psychopharmacol* 25:1148-1158.

Homan et al.

Catecholamine depletion and fearful faces

- Harmer CJ, O'Sullivan U, Favaron E, Massey-Chase R, Ayres R, Reinecke A, Goodwin GM, Cowen PJ (2009) Effect of acute antidepressant administration on negative affective bias in depressed patients. *Am J Psychiatry* 166:1178-1184.
- Hasler G, Luckenbaugh DA, Snow J, Meyers N, Waldeck T, Geraci M, Roiser J, Knutson B, Charney DS, Drevets WC (2009) Reward processing after catecholamine depletion in unmedicated, remitted subjects with major depressive disorder. *Biol Psychiatry* 66:201-205.
- Hasler G, Fromm S, Carlson PJ, Luckenbaugh DA, Waldeck T, Geraci M, Roiser JP, Neumeister A, Meyers N, Charney DS, Drevets WC (2008) Neural response to catecholamine depletion in unmedicated subjects with major depressive disorder in remission and healthy subjects. *Arch Gen Psychiatry* 65:521-531.
- Haxby JV, Hoffman EA, Gobbini MI (2002) Human neural systems for face recognition and social communication. *Biol Psychiatry* 51:59-67.
- Homan P, Kindler J, Hubl D, Dierks T (2012) Auditory verbal hallucinations: imaging, analysis, and intervention. *Eur Arch Psychiatry Clin Neurosci* 262 Suppl 2:91-95.
- Huang SC, Hoffman EJ, Phelps ME, Kuhl DE (1979) Quantitation in positron emission computed tomography: 2. Effects of inaccurate attenuation correction. *J Comput Assist Tomogr* 3:804-814.
- Johnstone T, van Reekum CM, Urry HL, Kalin NH, Davidson RJ (2007) Failure to regulate: counterproductive recruitment of top-down prefrontal-subcortical circuitry in major depression. *J Neurosci* 27:8877-8884.
- Kerestes R, Bhagwagar Z, Nathan PJ, Meda SA, Ladouceur CD, Maloney K, Matuskey D, Ruf B, Saricicek A, Wang F, Pearlson GD, Phillips ML, Blumberg HP (2012) Prefrontal cortical response to emotional faces in individuals with major depressive disorder in remission. *Psychiatry Res* 202:30-37.

- Kessler H, Traue H, Wiswede D (2011) Why we still don't understand the depressed brain - Not going beyond snapshots. *Psycho-social medicine* 8:Doc06.
- Kjaer TW, Nowak M, Lou HC (2002) Reflective self-awareness and conscious states: PET evidence for a common midline parietofrontal core. *Neuroimage* 17:1080-1086.
- Lawrence NS, Williams AM, Surguladze S, Giampietro V, Brammer MJ, Andrew C, Frangou S, Ecker C, Phillips ML (2004) Subcortical and ventral prefrontal cortical neural responses to facial expressions distinguish patients with bipolar disorder and major depression. *Biol Psychiatry* 55:578-587.
- Lewis DA (2000) Distributed disturbances in brain structure and function in schizophrenia. *Am J Psychiatry* 157:1-2.
- Liotti M, Mayberg HS, McGinnis S, Brannan SL, Jerabek P (2002) Unmasking disease-specific cerebral blood flow abnormalities: mood challenge in patients with remitted unipolar depression. *Am J Psychiatry* 159:1830-1840.
- Lou HC, Luber B, Crupain M, Keenan JP, Nowak M, Kjaer TW, Sackeim HA, Lisanby SH (2004) Parietal cortex and representation of the mental Self. *Proc Natl Acad Sci U S A* 101:6827-6832.
- Mayberg HS (1997) Limbic-cortical dysregulation: a proposed model of depression. *J Neuropsychiatry Clin Neurosci* 9:471-481.
- Morris JS, Ohman A, Dolan RJ (1998) Conscious and unconscious emotional learning in the human amygdala. *Nature* 393:467-470.
- Morris JS, Frith CD, Perrett DI, Rowland D, Young AW, Calder AJ, Dolan RJ (1996) A differential neural response in the human amygdala to fearful and happy facial expressions. *Nature* 383:812-815.

Homan et al.

Catecholamine depletion and fearful faces

- Neumeister A, Drevets WC, Belfer I, Luckenbaugh DA, Henry S, Bonne O, Herscovitch P, Goldman D, Charney DS (2006) Effects of a alpha 2C-adrenoreceptor gene polymorphism on neural responses to facial expressions in depression. *Neuropsychopharmacology* 31:1750-1756.
- Neumeister A, Nugent AC, Waldeck T, Geraci M, Schwarz M, Bonne O, Bain EE, Luckenbaugh DA, Herscovitch P, Charney DS, Drevets WC (2004) Neural and behavioral responses to tryptophan depletion in unmedicated patients with remitted major depressive disorder and controls. *Arch Gen Psychiatry* 61:765-773.
- Norbury R, Selvaraj S, Taylor MJ, Harmer C, Cowen PJ (2010) Increased neural response to fear in patients recovered from depression: a 3T functional magnetic resonance imaging study. *Psychol Med* 40:425-432.
- Ochsner KN, Bunge SA, Gross JJ, Gabrieli JD (2002) Rethinking feelings: an fMRI study of the cognitive regulation of emotion. *J Cogn Neurosci* 14:1215-1229.
- Ongur D, Ferry AT, Price JL (2003) Architectonic subdivision of the human orbital and medial prefrontal cortex. *J Comp Neurol* 460:425-449.
- Phillips ML, Ladouceur CD, Drevets WC (2008) A neural model of voluntary and automatic emotion regulation: implications for understanding the pathophysiology and neurodevelopment of bipolar disorder. *Mol Psychiatry* 13:829, 833-857.
- Phillips ML, Drevets WC, Rauch SL, Lane R (2003) Neurobiology of emotion perception II: Implications for major psychiatric disorders. *Biol Psychiatry* 54:515-528.
- Price JL, Drevets WC (2010) Neurocircuitry of mood disorders. *Neuropsychopharmacology* 35:192-216.
- Saleem KS, Kondo H, Price JL (2008) Complementary circuits connecting the orbital and medial prefrontal networks with the temporal, insular, and opercular cortex in the macaque monkey. *J Comp Neurol* 506:659-693.

Homan et al.

Catecholamine depletion and fearful faces

- Sheline YI, Barch DM, Price JL, Rundle MM, Vaishnavi SN, Snyder AZ, Mintun MA, Wang S, Coalson RS, Raichle ME (2009) The default mode network and self-referential processes in depression. *Proc Natl Acad Sci U S A* 106:1942-1947.
- Shimoda K, Robinson RG (1999) The relationship between poststroke depression and lesion location in long-term follow-up. *Biol Psychiatry* 45:187-192.
- Siegle GJ, Thompson W, Carter CS, Steinhauer SR, Thase ME (2007) Increased amygdala and decreased dorsolateral prefrontal BOLD responses in unipolar depression: related and independent features. *Biol Psychiatry* 61:198-209.
- Stine SM, Krystal JH, Petrakis IL, Jatlow PI, Heninger GR, Kosten TR, Charney DS (1997) Effect of alpha-methyl-para-tyrosine on response to cocaine challenge. *Biol Psychiatry* 42:181-190.
- Stuhrmann A, Suslow T, Dannlowski U (2011) Facial emotion processing in major depression: a systematic review of neuroimaging findings. *Biology of mood & anxiety disorders* 1:10.
- Surguladze S, Brammer MJ, Keedwell P, Giampietro V, Young AW, Travis MJ, Williams SC, Phillips ML (2005) A differential pattern of neural response toward sad versus happy facial expressions in major depressive disorder. *Biol Psychiatry* 57:201-209.
- Townsend DWaI, R.A. and Bendrium, B. (1998) Volume imaging tomographs. In: *The Theory and Practice of 3D PET* (Bendrium BaT, D.W., ed), pp 133-167. Boston: Kluwer Academic Publishers.
- Verhoeff NP, Christensen BK, Hussey D, Lee M, Papatheodorou G, Kopala L, Rui Q, Zipursky RB, Kapur S (2003) Effects of catecholamine depletion on D2 receptor binding, mood, and attentiveness in humans: a replication study. *Pharmacol Biochem Behav* 74:425-432.

Homan et al.

Catecholamine depletion and fearful faces

Victor TA, Furey ML, Fromm SJ, Ohman A, Drevets WC (2010) Relationship between amygdala responses to masked faces and mood state and treatment in major depressive disorder. Arch Gen Psychiatry 67:1128-1138.

Proof For Review

Table and Figure legends

Table 1

Demographic and clinical characteristics of unmedicated subjects with remitted major depressive disorder (RMDD) and healthy controls. Abbreviations: f/m, female/male; MADRS, Montgomery-Åsberg Depression Rating Scale; NA, not applicable; SD, standard deviation.

Figure 1

Mean anxiety, sadness and worry symptoms with standard errors as measured with a visual analogue scale (VAS) after each condition (fearful faces, neutral faces) categorized by stimulus, treatment and diagnosis.

a = significant stimulus-effect; b = significant diagnosis-effect; c = significant treatment-effect; d = significant stimulus-by-diagnosis interaction; all effects significant at $p < 0.05$.

Figure 2

A. Stimulus-by-treatment-by-diagnosis interaction in the region of interest selected according to the *a priori* hypotheses. A cluster of 38 voxels has been found in the posterior cingulate cortex (PCC), corresponding to Brodmann area 30 (peak: x, y, z = -8, -60, 8; $t [25] = 5.65$, $p < 0.05$, small-volume corrected for familywise error). **B.** Mean beta estimates with standard errors at the region of interest depicted in Figure 2A categorized by stimulus, treatment and diagnosis. * indicates a significant difference in the post-hoc tests at $p < 0.05$.

Figure 3

A. Stimulus-by-treatment-by-diagnosis Interaction in the left dorsolateral prefrontal cortex, a region of interest selected according to the *a priori* hypotheses. A cluster of 25 voxels was found in Brodmann area 46 (peak: x, y, z = -54, 26, 28; $t [25] = 6.37$, $p < 0.05$, small-volume corrected for familywise error). **B.**

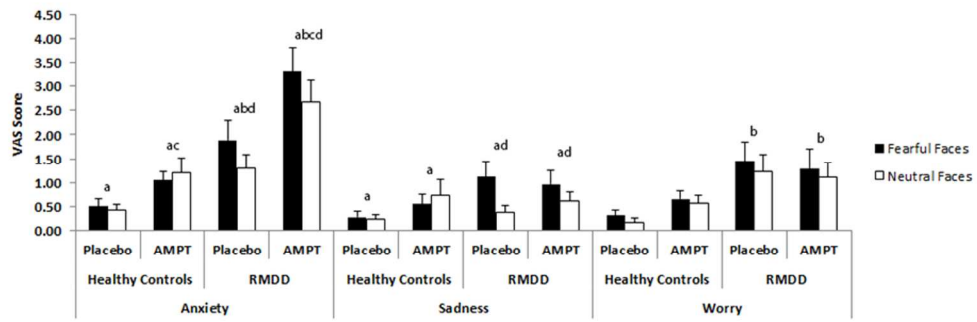
Mean beta estimates with standard errors at the region of interest depicted in Figure 3A categorized by stimuli, treatment and diagnosis. * indicates a significant difference in the post-hoc tests at $p < 0.05$.

Figure 4

Worry VAS scores as calculated by the difference (AMPT versus placebo) of within-session (fearful faces versus neutral faces) changes plotted against the corresponding normalized cerebral blood flow (CBF) values. The CBF values were extracted from the region where significant correlations were evident in the voxelwise correlational analysis including worry VAS score changes as covariates. This analysis revealed a positive association of the AMPT-induced within-session change of worry VAS score and the corresponding CBF changes in the right subgenual prefrontal cortex, Brodmann area 10m/32 (peak: x, y, z = 6, 34, -14; $t [24] = 6.68$; $p < 0.05$, corrected for familywise error).

Table 1

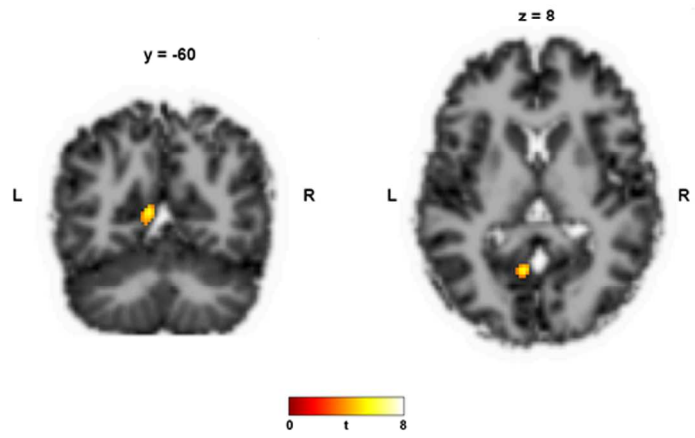
Characteristic	RMDD (n = 14)	Controls (n = 13)
Sex, No. females/males	13/1	12/1
Age, mean (SD), y	38.1 (11)	39 (10)
Age at onset, mean (SD), y	23 (8.2)	NA
Past Major Depressive Episodes, mean (SD), No.	2.5 (1.3)	0
Time in remission, mo		
Mean (SD)	33 (29)	NA
Range	7–118	NA
First-degree relative(s) with a mood disorder, No.	14	0
Remote (> 1 y ago) history of alcohol abuse, No.	3	1
History of drug abuse, No.	0	0
MADRS score at study entry, mean (SD)	1.4 (2.2)	0.4 (0.9)



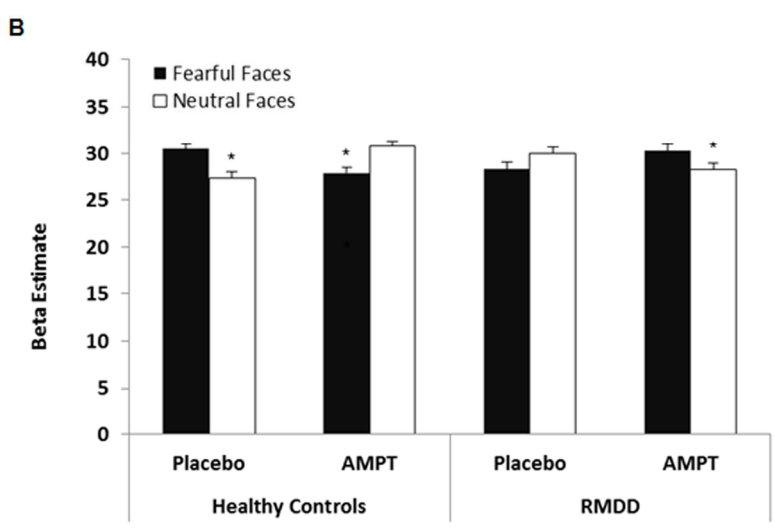
332x119mm (300 x 300 DPI)

Proof For Review

A

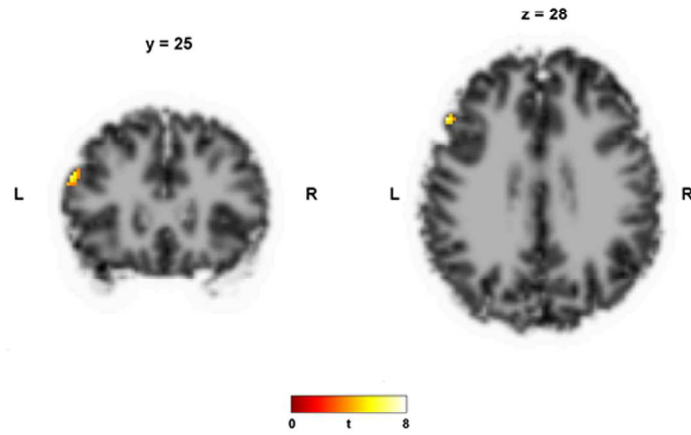


B

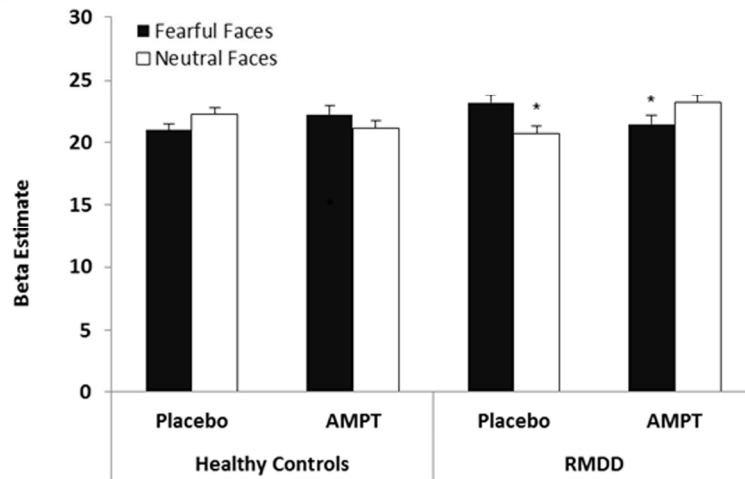


203x303mm (300 x 300 DPI)

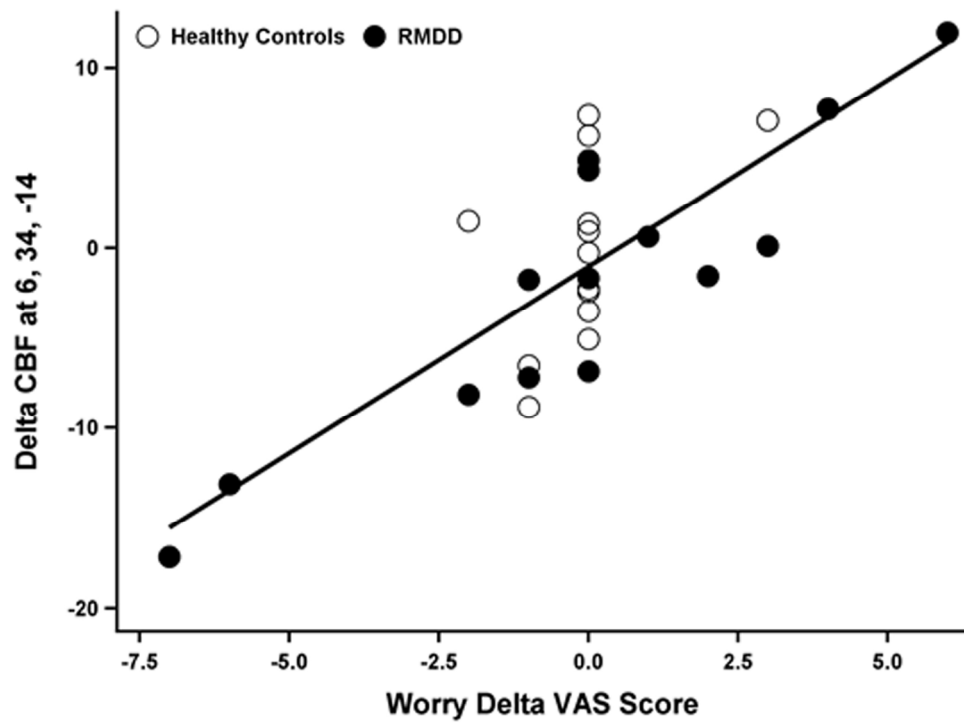
A



B



203x303mm (300 x 300 DPI)



181x134mm (300 x 300 DPI)

Review