

Maximum-likelihood estimation of a log-concave density based on censored data*

Lutz Dümbgen*

*University of Bern, Institute of Mathematical Statistics and Actuarial Science
Sidlerstrasse 5, CH-3012 Bern, Switzerland
e-mail: duembgen@stat.unibe.ch
url: www.stat.unibe.ch*

Kaspar Rufibach

*Biostatistics Oncology, F. Hoffmann-La Roche AG
CH-4070 Basel, Switzerland
e-mail: kaspar.rufibach@gmail.com
url: www.kasparrufibach.ch*

and

Dominic Schuhmacher*

*University of Göttingen, Institute for Mathematical Stochastics
Goldschmidtstraße 7, D-37077 Göttingen, Germany
e-mail: dominic.schuhmacher@mathematik.uni-goettingen.de
url: www.dominic.schuhmacher.name*

Abstract: We consider nonparametric maximum-likelihood estimation of a log-concave density in case of interval-censored, right-censored and binned data. We allow for the possibility of a subprobability density with an additional mass at $+\infty$, which is estimated simultaneously. The existence of the estimator is proved under mild conditions and various theoretical aspects are given, such as certain shape and consistency properties. An EM algorithm is proposed for the approximate computation of the estimator and its performance is illustrated in two examples.

MSC 2010 subject classifications: 62G07, 62N01, 62N02, 65C60.

Keywords and phrases: Active set algorithm, binning, cure parameter, expectation-maximization algorithm, interval-censoring, qualitative constraints, right-censoring.

Received November 2013.

Contents

1	Introduction	1406
2	Log-likelihoods and maximum-likelihood estimators	1407

*Work supported by research group FOR916 of Swiss National Science Foundation and Deutsche Forschungsgemeinschaft.

3	Restricting and approximating the parameter spaces	1408
4	Algorithms	1411
5	Identifiability and consistency	1417
6	Applications	1419
7	Proofs and technical results	1421
	Acknowledgement	1436
	References	1436

1. Introduction

We consider estimation of an unknown distribution P on $(-\infty, \infty]$ based on data which are “censored” in a rather general sense. We assume that $q := P(\{\infty\})$ is a number in $[0, 1)$ and that P has a log-concave sub-probability density f on \mathbb{R} . This means that $f = e^\phi$ for some concave function $\phi : \mathbb{R} \rightarrow [-\infty, \infty)$ with $\int e^{\phi(x)} dx = 1 - q$, and

$$P(B) = P_{\phi,q}(B) = \int_B e^{\phi(x)} dx + 1_{[\infty \in B]} q$$

for any Borel set $B \subset (-\infty, \infty]$.

In the simplest setting our data consists of independent observations X_1, X_2, \dots, X_n drawn from P . For $q = 0$ this case was investigated in detail by Dümbgen and Rufibach [5]. As explained in the latter paper, the shape constraint of log-concavity is rather natural in many situations and leads to enhanced estimators of the distribution function of P as well as good estimators of the density f without requiring the choice of any tuning parameter. See also the review of Walther [15] about the benefits and possible applications of log-concavity.

In many applications the values X_i are not exactly observed. One well-known example is right-censoring: Suppose that the X_i are event times in a biomedical study with values in $(0, \infty]$, i.e. $P((-\infty, 0]) = 0$ and $\phi(x) = -\infty$ for $x < 0$. Here $X_i = \infty$ means that the event does not happen at all, and q is sometimes referred to as the “cure parameter”. If the study ends at time C_i from the viewpoint of the i -th unit but $X_i > C_i$, then we have a right-censored observation and know only that X_i is contained in the interval $\tilde{X}_i = (C_i, \infty]$. In other settings one has purely interval-censored data: The i -th unit is inspected at one or several time points, and at each inspection one can only tell whether the event in question has already happened or not. This gives also an interval $\tilde{X}_i = (L_i, R_i] \subset (0, \infty]$ containing X_i . Related to interval-censoring is rounding or binning: For a given partition of $(-\infty, \infty]$ into nondegenerate left-open and right-closed intervals, we only know which interval observation X_i belongs to. In view of econometric applications (e.g. log-returns, log-incomes) it is desirable to allow negative values of the X_i . Whenever we talk about “censored data” we mean right-censored, interval-censored, binned or rounded data. The censoring or inspection time points or the binning intervals are assumed to be either fixed or random and independent from the random variables X_i .

In case of censored data, the potential benefits of shape-constraints are even higher than in settings with complete data. To analyze interval-censored data, Dümbgen et al. [3] constrained the density f on $[0, \infty)$ to be non-increasing or unimodal. The former constraint leads typically to accelerated rates of convergence compared to the unrestricted nonparametric estimator, see for instance Dümbgen et al. [2]. An obvious question is how we can cope with the constraint of f being log-concave, which is stronger than f being unimodal.

The remainder of this paper is organized as follows: In Section 2 we introduce the log-likelihood functions for our general setting and provide necessary and sufficient conditions for the existence of maximizers. In Section 3 we show how the parameter space may be restricted and approximated. Particular algorithms for the computation of the MLEs are proposed in Section 4. They utilize the EM paradigm of Dempster et al. [1] and the fast algorithms for complete data by Dümbgen et al. [4]. Section 5 discusses (partial) identifiability of the special parameter q and some consistency properties of our estimators. In Section 6 we illustrate our methods with real and simulated data. Proofs and technical details are deferred to Section 7.

2. Log-likelihoods and maximum-likelihood estimators

Log-likelihood functions. Our full parameter space Θ is the set of all pairs (ϕ, q) consisting of a concave and upper semicontinuous function $\phi : \mathbb{R} \rightarrow [-\infty, \infty)$ and a parameter $q \in [0, 1)$ such that

$$\int e^{\phi(x)} dx + q = 1. \tag{2.1}$$

If we fix the value q , the set of all concave and upper semicontinuous functions ϕ satisfying (2.1) is denoted by $\Phi(q)$.

If we could observe the random variables X_1, X_2, \dots, X_n , an appropriate normalized log-likelihood function $\tilde{\ell} : \Theta \rightarrow [-\infty, \infty)$ would be given by

$$\tilde{\ell}(\phi, q) := \frac{1}{n} \sum_{i=1}^n (1_{[X_i < \infty]} \phi(X_i) + 1_{[X_i = \infty]} \log q). \tag{2.2}$$

In case of censored data we observe random subintervals $\tilde{X}_1, \tilde{X}_2, \dots, \tilde{X}_n$ of $(-\infty, \infty]$. More precisely, we assume that either $\tilde{X}_i = (L_i, R_i] \ni X_i$ with $-\infty < L_i < R_i \leq \infty$, or \tilde{X}_i consists only of the one point $L_i = R_i = X_i \in \mathbb{R}$. Note that we exclude the possibility of $L_i = -\infty$, which is convenient and typically no serious restriction. For instance, in connection with event times $X_i > 0$, the left end points L_i are always nonnegative.

After conditioning on all censoring and inspection time points or binning intervals, we end up with independent observations \tilde{X}_i , and the normalized log-likelihood function $\ell : \Theta \rightarrow [-\infty, \infty)$ for our setting is given by

$$\ell(\phi, q) := \frac{1}{n} \sum_{i=1}^n (1_{[L_i = R_i]} \phi(X_i) + 1_{[L_i < R_i]} \log P_{\phi, q}((L_i, R_i])). \tag{2.3}$$

Sometimes we want to rule out the possibility of a positive mass q at infinity, in which case we consider

$$\ell(\phi) := \ell(\phi, 0)$$

for $\phi \in \Phi(0)$.

Maximum-likelihood estimators. Our goal is to find a maximum-likelihood estimator (MLE) $(\hat{\phi}, \hat{q})$ of (ϕ, q) , i.e. a maximizer of $\ell(\cdot, \cdot)$ over Θ . Under the restriction that $q = 0$ we aim to find a MLE $\hat{\phi}_0$ of ϕ , i.e. a maximizer of $\ell(\cdot)$ over $\Phi(0)$.

Our first theorem characterizes the existence of these MLEs.

Theorem 2.1 (Existence of MLEs). *A maximizer $\hat{\phi}_0$ of $\ell(\cdot, 0)$ over $\Phi(0)$ exists if, and only if, there exists no uncensored observation $\tilde{X}_{i_o} = \{X_{i_o}\}$ such that each interval $[L_i, R_i]$ contains X_{i_o} .*

A maximizer $(\hat{\phi}, \hat{q})$ of $\ell(\cdot)$ over Θ exists if, and only if, there exists no uncensored observation $\tilde{X}_{i_o} = \{X_{i_o}\}$ such that each interval $[L_i, R_i]$ contains X_{i_o} or ∞ .

Note that the MLEs may only fail to exist in situations where the exact observations $\{L_i: L_i = R_i, 1 \leq i \leq n\}$ form a one-point set. Therefore both MLEs $\hat{\phi}_0$ and $(\hat{\phi}, \hat{q})$ exist in the case of purely interval-censored, rounded or binned data. In the classical right-censored case, assuming i.i.d. censoring times C_1, \dots, C_n and writing $\varrho := \mathbb{P}(X_i \leq C_i)$, the probability for existence of both MLEs is at least $1 - n\varrho(1 - \varrho)^{n-1}$, which goes to 1 geometrically fast.

In the first part of Section 3 we describe some simple special cases in which the MLE $(\hat{\phi}, \hat{q})$ either does not exist or is rather trivial.

3. Restricting and approximating the parameter spaces

Special cases. In some situations a MLE $(\hat{\phi}, \hat{q})$ may not exist or may be rather trivial. The next two lemmas describe such scenarios.

Lemma 3.1. *Suppose that*

$$\bigcap_{i=1}^n [L_i, R_i] = [\mu', \mu'']$$

for certain numbers $-\infty < \mu' < \mu'' \leq \infty$. Then $\ell(\phi, q) \leq 0$ with equality if, and only if, $P_{\phi, q}((\mu', \mu'']) = 1$.

Lemma 3.2. *Suppose that*

$$\bigcap_{i=1}^n [L_i, R_i] = \{\mu\}$$

for some point $\mu \in \mathbb{R}$. If $L_i = R_i = \mu$ for at least one index i , then

$$\sup_{\phi \in \Phi(0)} \ell(\phi) = \infty.$$

Otherwise, let $n_\ell := \#\{i : L_i < \mu = R_i\}$, $n_r := \#\{i : L_i = \mu < R_i\}$, and define $a := \max\{L_i : L_i < \mu\}$, $b := \min\{R_i : R_i > \mu\}$. Then

$$\ell(\phi, q) \leq \frac{n_\ell}{n} \log\left(\frac{n_\ell}{n_\ell + n_r}\right) + \frac{n_r}{n} \log\left(\frac{n_r}{n_\ell + n_r}\right)$$

with equality if, and only if,

$$P_{\phi, q}((a, \mu]) = \frac{n_\ell}{n_\ell + n_r}, \quad P_{\phi, q}((\mu, b]) = \frac{n_r}{n_\ell + n_r}. \tag{3.1}$$

In view of Lemmas 3.1 and 3.2, when searching for a MLE one should first check the numbers $\mu' := \max\{L_1, \dots, L_n\}$ and $\mu'' := \min\{R_1, \dots, R_n\}$. If $\mu' < \mu''$, then any pair $(\phi, q) \in \Theta$ such that $P_{\phi, q}([\mu', \mu'']) = 1$ is a MLE. For instance, one could just take $q = 0$ and the linear log-density

$$\phi(x) := \begin{cases} \alpha + \beta x & \text{for } x \in [\mu', \mu''] \\ -\infty & \text{for } x \in \mathbb{R} \setminus [\mu', \mu''] \end{cases}$$

with arbitrary $\beta \in \mathbb{R}$ ($\beta < 0$ in case of $\mu'' = \infty$) and a suitable $\alpha = \alpha(\beta, \mu', \mu'') \in \mathbb{R}$.

In case of $\mu' = \mu'' =: \mu$, one has to check whether $L_i = R_i = \mu$ for at least one index i . If yes, there exists no MLE. If no, one has to determine the numbers n_ℓ, n_r and boundaries $a < \mu < b$ as described in Lemma 3.2. Then any $(\phi, q) \in \Theta$ satisfying (3.1) is a MLE. Here one can also show that $q = 0$ and

$$\phi(x) := \begin{cases} \alpha + \beta x & \text{for } x \in [a, b] \\ -\infty & \text{for } x \in \mathbb{R} \setminus [a, b] \end{cases}$$

with suitable $\alpha, \beta \in \mathbb{R}$ fulfill this constraint.

In case of at least one uncensored observation we have to rule out an additional pathological case:

Lemma 3.3. *Suppose that $L_{i_o} = R_{i_o} = \mu$ for some index i_o and $\mu \in \mathbb{R}$. Further suppose that all observations satisfy $\mu \in [L_i, R_i]$ or $R_i = \infty$. Then for any $q \in (0, 1)$,*

$$\sup_{\phi \in \Phi(q)} \ell(\phi, q) = \infty.$$

Shape of the maximizers. We start this section with a rather simple and intuitive fact about the domains of $\hat{\phi}$ and $\hat{\phi}_0$, where the domain of a concave function ϕ is defined as

$$\text{dom}(\phi) := \{x \in \mathbb{R} : \phi(x) > -\infty\}.$$

Lemma 3.4. *Let $-\infty \leq a < b \leq \infty$ such that $\tilde{X}_1, \tilde{X}_2, \dots, \tilde{X}_n \subset [a, b]$. If a MLE $\hat{\phi}_0$ exists, then $\text{dom}(\hat{\phi}_0) \subset [a, b]$. If a MLE $(\hat{\phi}, \hat{q})$ exists, then $\text{dom}(\hat{\phi}) \subset [a, b]$.*

In what follows let

$$-\infty < \tau_1 < \tau_2 < \dots < \tau_m < \tau_{m+1} = \infty$$

such that

$$\{\tau_1, \tau_2, \dots, \tau_{m+1}\} = \{L_1, L_2, \dots, L_n\} \cup \{R_1, R_2, \dots, R_n\} \cup \{\infty\}.$$

In particular, $\tau_1 = \min\{L_1, L_2, \dots, L_n\}$. We assume that $m \geq 2$, because otherwise Lemma 3.1, 3.2 or 3.3 would apply. It follows directly from Lemma 3.4 that

$$\begin{aligned} \text{dom}(\hat{\phi}_0) &\subset \begin{cases} [\tau_1, \infty), \\ [\tau_1, \tau_m] \end{cases} \text{ if } R_i < \infty \text{ for } 1 \leq i \leq n, \\ \text{dom}(\hat{\phi}) &\subset [\tau_1, \infty). \end{aligned}$$

One may even require that $\text{dom}(\hat{\phi}) \subset [\tau_1, \tau_m]$, because for any $(\phi, q) \in \Theta$, the value of $\ell(\phi, q)$ remains the same if we replace q with $q + \int_{\tau_m}^{\infty} e^{\phi(t)} dt$ and redefine $\phi(t) := -\infty$ for $t > \tau_m$.

Note that ϕ enters $\ell(\phi, q)$ only via the values $\phi(X_i)$ for those i with $L_i = R_i$ and via the integrals $\int_{\tau_j}^{\tau_{j+1}} e^{\phi(t)} dt$, $1 \leq j \leq m$. Indeed we may restrict our attention to piecewise linear functions ϕ with at most $m - 1$ changes of slope within their domain:

Theorem 3.5 (Shape of maximizers). *Let $(\phi, q) \in \Theta$ with $\ell(\phi, q) > -\infty$ and $\text{dom}(\phi) \subset [\tau_1, \infty)$. Then there exists a $(\tilde{\phi}, q) \in \Theta$ satisfying $\ell(\tilde{\phi}, q) \geq \ell(\phi, q)$ and $\text{dom}(\tilde{\phi}) \subset [\tau_1, \infty)$ and the following conditions:*

(i) *For $j \in \{1, 2, \dots, m\}$ either $\text{dom}(\tilde{\phi}) \cap (\tau_j, \tau_{j+1}) = \emptyset$ or $(\tau_j, \tau_{j+1}) \subset \text{dom}(\tilde{\phi})$. In the latter case, $\tilde{\phi}$ is piecewise linear on $[\tau_j, \tau_{j+1}] \cap \mathbb{R}$ with at most one change of slope within (τ_j, τ_{j+1}) . It is even linear on $[\tau_j, \tau_{j+1}] \cap \mathbb{R}$ if*

$$\begin{cases} j \in \{1, m - 1, m\}, \\ j \geq 2 \text{ and } \text{dom}(\tilde{\phi}) \subset [\tau_j, \infty), \\ j \leq m - 2 \text{ and } \text{dom}(\tilde{\phi}) \subset (-\infty, \tau_{j+1}], \\ (\tau_j, \tau_{j+1}) \subset \mathbb{R} \setminus \bigcup_{i=1}^n [L_i, R_i]. \end{cases}$$

(ii) *Suppose that for indices $1 \leq j < \ell \leq m + 1$ with $\ell - j \geq 2$,*

$$\begin{aligned} \tau_j \in \text{dom}(\tilde{\phi}) \subset (-\infty, \tau_\ell], \quad \int_{\tau_j}^{\tau_\ell} e^{\tilde{\phi}(x)} dx > 0 \\ \text{and } \tau_k \notin \{R_1, \dots, R_n\} \text{ if } j < k < \ell. \end{aligned}$$

Then $\tilde{\phi}$ is linear on $[\tau_j, \tau_\ell] \cap \mathbb{R}$.

(iii) *Suppose that for indices $1 \leq j < \ell \leq m$ with $\ell - j \geq 2$,*

$$\begin{aligned} \tau_\ell \in \text{dom}(\tilde{\phi}) \subset [\tau_j, \infty), \quad \int_{\tau_j}^{\tau_\ell} e^{\tilde{\phi}(x)} dx > 0 \\ \text{and } \tau_k \notin \{L_1, \dots, L_n\} \text{ if } j < k < \ell. \end{aligned}$$

Then $\tilde{\phi}$ is linear on $[\tau_j, \tau_\ell]$.

(iv) *Suppose that $[\tau_{j-1}, \tau_{j+1}] \subset \text{dom}(\tilde{\phi})$ for an index $2 \leq j \leq m - 1$. Then $\tilde{\phi}$ has at most one change of slope within (τ_{j-1}, τ_{j+1}) .*

Approximating the parameter spaces. In view of Theorem 3.5 we consider arbitrary tuples $\mathbf{t} = (t_1, t_2, \dots, t_N)$ with $N \geq 2$ components $-\infty < t_1 < t_2 < \dots < t_N < t_{N+1} := \infty$ and define

$$\begin{aligned} \Phi_{\mathbf{t}}(q) &:= \left\{ \phi \in \Phi(q) : \text{dom}(\phi) = [t_1, \infty) \text{ and} \right. \\ &\quad \left. \phi \text{ is linear on } [t_1, t_2], [t_2, t_3], \dots, [t_{N-1}, t_N], [t_N, \infty) \right\}, \\ \Phi_{\mathbf{t}}^o(q) &:= \left\{ \phi \in \Phi(q) : \text{dom}(\phi) = [t_1, t_N] \text{ and} \right. \\ &\quad \left. \phi \text{ is linear on } [t_1, t_2], [t_2, t_3], \dots, [t_{N-1}, t_N] \right\}. \end{aligned}$$

Note that functions $\phi \in \Phi_{\mathbf{t}}(q)$ and $\phi^o \in \Phi_{\mathbf{t}}^o(q)$ are completely determined by the tuples

$$(\phi(t_1), \phi(t_2), \dots, \phi(t_N), \phi'(t_N +)) \quad \text{and} \quad (\phi^o(t_1), \phi^o(t_2), \dots, \phi^o(t_N)).$$

In addition we need the larger sets $\overline{\Phi}_{\mathbf{t}}(q)$ and $\overline{\Phi}_{\mathbf{t}}^o(q)$ of functions in $\Phi(q)$ which may be represented as pointwise limits of sequences in $\Phi_{\mathbf{t}}(q)$ and $\Phi_{\mathbf{t}}^o(q)$, respectively. One can easily verify that

$$\begin{aligned} \overline{\Phi}_{\mathbf{t}}(q) &= \bigcup_{1 \leq a \leq N} \Phi_{(t_a, \dots, t_N)}(q) \cup \bigcup_{1 \leq a < b \leq N} \Phi_{(t_a, \dots, t_b)}^o(q), \\ \overline{\Phi}_{\mathbf{t}}^o(q) &= \bigcup_{1 \leq a < b \leq N} \Phi_{(t_a, \dots, t_b)}^o(q). \end{aligned}$$

In case of $m \leq 3$, when maximizing $\ell(\cdot)$ over $\Phi(0)$, we may replace $\Phi(0)$ with its subset $\overline{\Phi}_{(\tau_1, \dots, \tau_m)}(0)$. To maximize $\ell(\cdot, \cdot)$ over Θ , it suffices to consider the set $\overline{\Phi}_{(\tau_1, \dots, \tau_m)}^o(q)$ in place of $\Phi(q)$ for $0 \leq q < 1$.

In case of $m \geq 4$, our target functions $\hat{\phi}_0$ or $\hat{\phi}$ may contain knots in $\mathbb{R} \setminus \{\tau_1, \tau_2, \dots, \tau_m\}$. Precisely, if we exclude the special situations described by Lemmas 3.1, 3.2 and 3.3, then there exist a smallest index $j_1 \in \{2, \dots, m\}$ such that $\tau_{j_1} \in \{L_1, L_2, \dots, L_n\}$ and a largest index $j_2 \in \{1, 2, \dots, m-1\}$ such that $\tau_{j_2} \in \{R_1, R_2, \dots, R_n\}$. By Theorem 3.5 (i), (ii) and (iii) we may focus on target functions that are linear on the part of their domain that lies before τ_{j_1} and on the part that lies after τ_{j_2} . So in case of $j_1 \geq j_2$, it still suffices to consider $\overline{\Phi}_{(\tau_1, \tau_2, \dots, \tau_m)}(0)$ instead of $\Phi(0)$ and, when maximizing of Θ , to consider $\overline{\Phi}_{(\tau_1, \tau_2, \dots, \tau_m)}^o(q)$ instead of $\Phi(q)$ for $q \in (0, 1]$. If $j_1 < j_2$, however, we approximate $\Phi(q)$ with $\overline{\Phi}_{\mathbf{t}}(q)$ or $\overline{\Phi}_{\mathbf{t}}^o(q)$, where \mathbf{t} contains $\tau_1, \tau_2, \dots, \tau_m$ and a fine grid of extra points in (τ_j, τ_{j+1}) for each $j \in \{j_1, \dots, j_2 - 1\}$ such that $(\tau_j, \tau_{j+1}) \not\subset \mathbb{R} \setminus \bigcup_{i=1}^n [L_i, R_i]$.

4. Algorithms

Throughout this section we exclude the special situations described in Lemmas 3.1, 3.2 and 3.3. In particular, we assume that $R_i < \infty$ for at least one observation, and $m \geq 2$.

Augmented log-likelihood functions. Using a trick of [12], we can remove the constraint (2.1). Let Φ be the set of all concave and upper semicontinuous functions $\phi : \mathbb{R} \rightarrow [-\infty, \infty)$ such that $\phi(x) \rightarrow -\infty$ as $|x| \rightarrow \infty$. Define the augmented log-likelihood as

$$\Lambda(\phi, q) := \ell(\phi, q) - \int e^{\phi(x)} dx - q + 1 \quad (4.1)$$

for $\phi \in \Phi$ and $q \geq 0$, and set $\Lambda(\phi) := \Lambda(\phi, 0)$. In case of $\Lambda(\phi, q) > -\infty$,

$$\frac{\partial}{\partial c} \Lambda(\phi + c, qe^c) = 1 - e^c \left(\int e^{\phi(x)} dx + q \right)$$

for any $c \in \mathbb{R}$. Hence for fixed $\phi \in \Phi$ and $q \geq 0$ such that $\Lambda(\phi, q) > -\infty$,

$$\arg \max_{c \in \mathbb{R}} \Lambda(\phi + c, qe^c) = -\log \left(\int e^{\phi(x)} dx + q \right).$$

Moreover, for this particular value c , the parameter $(\phi + c, qe^c)$ belongs to Θ , and $\ell(\phi + c, qe^c) = \Lambda(\phi + c, qe^c)$. These considerations imply the following result:

Lemma 4.1.

$$\arg \max_{(\phi, q) \in \Theta} \ell(\phi, q) = \arg \max_{(\phi, q) \in \Phi \times [0, \infty)} \Lambda(\phi, q)$$

and

$$\arg \max_{\phi \in \Phi(0)} \ell(\phi) = \arg \max_{\phi \in \Phi} \Lambda(\phi),$$

where $\arg \max$ refers to the (possibly empty) set of the corresponding maximizers.

Optimizing the cure parameter. It seems that we cannot use Silverman's trick to maximize $\ell(\phi, q)$ for a given fixed value $q > 0$. But the augmented likelihood $\Lambda(\phi, q)$ is useful for finding a better value of q : Let ϕ be a fixed function in Φ such that $\Lambda(\phi, q) > -\infty$ for some (and thus all) $q > 0$. Then

$$\frac{\partial}{\partial q} \Lambda(\phi, q) = \frac{1}{n} \sum_{i=1}^n \frac{1_{[R_i=\infty]}}{\int_{L_i}^{\infty} e^{\phi(x)} dx + q} - 1.$$

In the special case of all right endpoints R_i being finite, $\Lambda(\phi, q) < \Lambda(\phi)$ for any $q > 0$. Otherwise, if $R_i = \infty$ for at least one observation, the right hand side is strictly decreasing in $q > 0$ and strictly negative for $q > \bar{q} := \#\{i : R_i = \infty\}/n$. Hence one can easily maximize $\Lambda(\phi, q)$ with respect to $q \geq 0$ as follows: If

$$\frac{1}{n} \sum_{i=1}^n \frac{1_{[R_i=\infty]}}{\int_{L_i}^{\infty} e^{\phi(x)} dx} \leq 1, \quad (4.2)$$

then the maximizer is given by $q = 0$. Otherwise it is the unique number $q \in (0, \bar{q}]$ such that

$$\frac{1}{n} \sum_{i=1}^n \frac{1_{[R_i=\infty]}}{\int_{L_i}^{\infty} e^{\phi(x)} dx + q} = 1. \quad (4.3)$$

This number may be determined, for instance, by binary search or a Newton procedure. Note also that $\bar{q} < 1$ by assumption.

The EM paradigm. Maximizing the augmented log-likelihood $\Lambda(\phi, q)$ with respect to $\phi \in \Phi$ for a fixed value of $q \geq 0$ is a non-trivial task. A major problem is that $\ell(\cdot, q)$ is convex rather than linear or concave. Namely, let $\phi, \phi_{\text{new}} \in \Phi$ with $\Lambda(\phi, q), \Lambda(\phi_{\text{new}}, q) > -\infty$ and $\text{dom}(\phi_{\text{new}}) = \text{dom}(\phi)$. Further let $v(x) := \phi_{\text{new}}(x) - \phi(x)$ for $x \in \text{dom}(\phi)$ and $v(x) := 0$ otherwise. Then $[0, 1] \mapsto \Lambda(\phi + tv, q)$ is continuous, and for $t \in (0, 1]$,

$$\begin{aligned} \frac{d}{dt} \ell(\phi + tv, q) &= \frac{1}{n} \sum_{i=1}^n \left(1_{[L_i=R_i]} v(X_i) \right. \\ &\quad \left. + 1_{[L_i < R_i]} \frac{\int_{L_i}^{R_i} v(x) e^{\phi(x)+tv(x)} dx}{\int_{L_i}^{R_i} e^{\phi(x)+tv(x)} dx + 1_{[R_i=\infty]} q} \right) \end{aligned} \tag{4.4}$$

$$\begin{aligned} &= \frac{1}{n} \sum_{i=1}^n \mathbb{E}_{\phi+tv, q}(v(Y) \mid Y \in \tilde{X}_i), \\ \frac{d^2}{dt^2} \ell(\phi + tv, q) &= \frac{1}{n} \sum_{i=1}^n \text{Var}_{\phi+tv, q}(v(Y) \mid Y \in \tilde{X}_i) \geq 0, \end{aligned} \tag{4.5}$$

where $v(\infty) := 0$, the observations \tilde{X}_i are viewed temporarily as fixed, and Y denotes a random variable such that

$$\mathbb{P}_{\phi+tv, q}(Y \in B) = \frac{\int_{B \cap \mathbb{R}} e^{\phi(x)+tv(x)} dx + 1_{[\infty \in B]} q}{\int_{\mathbb{R}} e^{\phi(x)+tv(x)} dx + q}$$

for Borel sets $B \subset (-\infty, \infty]$. We may also write

$$\left. \frac{d}{dt} \right|_{t=0} \ell(\phi + tv, q) = \int v dM_{\phi, q}$$

with the following sub-probability distribution $M_{\phi, q}$ on \mathbb{R} : For any Borel set $B \subset \mathbb{R}$,

$$M_{\phi, q}(B) := n^{-1} \sum_{i=1}^n \left(1_{[L_i=R_i]} 1_{[X_i \in B]} + 1_{[L_i < R_i]} \frac{\int_{B \cap (L_i, R_i)} e^{\phi(x)} dx}{\int_{(L_i, R_i)} e^{\phi(x)} dx + 1_{[R_i=\infty]} q} \right).$$

Now we propose to replace $\ell(\psi, q)$ in the definition of $\Lambda(\psi, q)$ with its linearization $\ell(\phi, q) + \int (\psi - \phi) dM_{\phi, q} = c(\phi, q) + \int \psi dM_{\phi, q}$ and to maximize

$$\Lambda_{\phi, q}(\psi) := \int \psi dM_{\phi, q} - \int e^{\psi(x)} dx - q + 1$$

over all $\psi \in \Phi$. Note also that

$$\int \psi dM_{\phi, q} = \mathbb{E}(\tilde{\ell}(\psi, 0) \mid \tilde{X}_1, \tilde{X}_2, \dots, \tilde{X}_n),$$

i.e. the conditional expectation of the complete-data log-likelihood, given the available data. This is the more traditional motivation for the EM algorithm.

Existence of a unique maximizer of $\Lambda_{\phi,q}(\cdot)$ over Φ is guaranteed by the following auxiliary result which is just a modification of Theorem 2.2 of [6]:

Lemma 4.2. *Let M be a finite measure on the Borel subsets of \mathbb{R} such that $S(M) := \{x \in \mathbb{R} : 0 < M((-\infty, x]) < M(\mathbb{R})\} \neq \emptyset$ and $\int |x| M(dx) < \infty$. Then there exists a unique maximizer $\phi \in \Phi$ of*

$$\int \phi dM - \int e^{\phi(x)} dx.$$

This maximizer ϕ satisfies the equation $\int e^{\phi(x)} dx = M(\mathbb{R})$, and the closure of $\text{dom}(\phi)$ equals the closure of $S(M)$.

Suppose our current candidate for $(\hat{\phi}, \hat{q})$ is (ϕ, q) , where either $q = 0$ or $q > 0$ satisfies (4.3). Then the measure $M_{\phi,q}$ satisfies $M_{\phi,q}(\mathbb{R}) = 1 - q$. Now let ϕ_{new} be the maximizer of $\Lambda_{\phi,q}(\cdot)$ over Φ . It will automatically satisfy the equation

$$\int e^{\phi_{\text{new}}(x)} dx = 1 - q,$$

so $\phi_{\text{new}} \in \Phi(q)$. Moreover,

$$\Lambda(\phi_{\text{new}}, q) > \Lambda(\phi, q) \quad \text{unless } \phi_{\text{new}} \equiv \phi.$$

For if $\phi_{\text{new}} \neq \phi$, then the definition of ϕ_{new} and convexity of $\ell(\cdot, q)$ imply that

$$\begin{aligned} 0 &< \Lambda_{\phi,q}(\phi_{\text{new}}) - \Lambda_{\phi,q}(\phi) \\ &= \int (\phi_{\text{new}} - \phi) dM_{\phi,q} - \int e^{\phi_{\text{new}}(x)} dx + \int e^{\phi(x)} dx \\ &= \left. \frac{d}{dt} \right|_{t=0} \ell(\phi + t(\phi_{\text{new}} - \phi), q) - \int e^{\phi_{\text{new}}(x)} dx + \int e^{\phi(x)} dx \\ &\leq \ell(\phi_{\text{new}}, q) - \ell(\phi, q) - \int e^{\phi_{\text{new}}(x)} dx + \int e^{\phi(x)} dx \\ &= \Lambda(\phi_{\text{new}}, q) - \Lambda(\phi, q). \end{aligned}$$

Now we replace ϕ with ϕ_{new} . When maximizing $\ell(\cdot, \cdot)$ over Θ , we also recalculate q via (4.2) and (4.3). This yields possibly a further increase of $\Lambda(\phi, q)$, and the new value q equals 0 or satisfies (4.3). In principle this procedure is iterated until the “difference” between ϕ and ϕ_{new} becomes negligible.

Practical implementation of the EM step. Maximization of $\Lambda_{\phi,q}(\cdot)$ over Φ may be achieved via an active set algorithm as described in [4] if we approximate Φ by finite-dimensional sets $\Phi_{\mathbf{t}}$ or $\Phi_{\mathbf{t}}^o$. The latter two are defined as the sets $\Phi_{\mathbf{t}}(q)$ and $\Phi_{\mathbf{t}}^o(q)$ in Section 3 with the constraint $\phi \in \Phi(q)$ replaced with the requirement $\phi \in \Phi$. Initially the tuple $\mathbf{t} = (t_1, t_2, \dots, t_N)$ is chosen as described at the end of Section 3. Later on it may be a subtuple of that.

Suppose that ϕ is a log-density in $\Phi_{\mathbf{t}}(q)$ or $\Phi_{\mathbf{t}}^o(q)$ where either $q = 0$ or $q \in (0, 1)$ satisfies (4.3). Since $[t_1, t_N] \subset [\tau_1, \tau_m]$, $\text{dom}(\phi)$ is a closed set and

equal to the convex hull of the support of $M_{\phi,q}$. Hence the closure of the domain of $\arg \max_{\psi \in \Phi} \Lambda_{\phi,q}(\psi)$ is equal to $\text{dom}(\phi)$. Consequently, if we restrict our attention to candidates in $\bar{\Phi}_t$, then it even suffices to consider functions in

$$\tilde{\Phi} := \begin{cases} \Phi_t & \text{if } \phi \in \Phi_t(q), \\ \Phi_t^o & \text{if } \phi \in \Phi_t^o(q). \end{cases}$$

But for $\psi \in \tilde{\Phi}$ we may write

$$\int \psi dM_{\phi,q} = \sum_{j=1}^N w_j \psi(t_j) + w_{N+1} \psi'(t_N +),$$

where $\psi'(t_N +) := -\infty$ in case of $\tilde{\Phi} = \Phi_t^o$, and

$$\begin{aligned} w_1 &:= w_{1,c} + w_{1,r}, \\ w_j &:= w_{j,\ell} + w_{j,c} + w_{j,r} \quad \text{for } 2 \leq j < N, \\ w_N &:= w_{N,\ell} + w_{N,c} + M_{\phi,q}((t_N, \infty)), \\ w_{j,c} &:= \#\{i : L_i = R_i = t_j\}/n, \\ w_{j,\ell} &:= \int_{t_{j-1}}^{t_j} \frac{x - t_{j-1}}{t_j - t_{j-1}} M_{\phi,q}(dx) \quad \text{for } 2 \leq j \leq N, \\ w_{j,r} &:= \int_{t_j}^{t_{j+1}} \frac{t_{j+1} - x}{t_{j+1} - t_j} M_{\phi,q}(dx) \quad \text{for } 1 \leq j < N, \\ w_{N+1} &:= \int_{t_N}^{\infty} (x - t_N) M_{\phi,q}(dx). \end{aligned}$$

(Note that $w_{N+1} = 0$ in case of $\phi \in \Phi_t^o(q)$.) Hence $\int \psi dM_{\phi,q}$ is a simple linear combination of $(\psi(t_1), \psi(t_2), \dots, \psi(t_N), \psi'(t_N +))$. The second part of $\Lambda_{\phi,q}(\psi)$ may be written as

$$\int e^{\psi(x)} dx = \sum_{j=1}^{N-1} (t_{j+1} - t_j) J(\psi(t_j), \psi(t_{j+1})) + \tilde{J}(\psi(t_N), \psi'(t_N +)),$$

where for $a, b \in \mathbb{R}$ and $c \in [-\infty, 0)$,

$$\begin{aligned} J(a, b) &:= \int_0^1 \exp((1-t)a + tb) dt = \begin{cases} \exp(a) & \text{if } a = b, \\ (\exp(b) - \exp(a))/(b - a) & \text{if } a \neq b, \end{cases} \\ \tilde{J}(a, c) &:= \int_0^{\infty} \exp(a + ct) dt = \exp(a)/(-c). \end{aligned}$$

Stopping the EM iterations and modifying the domains of $\hat{\phi}_0$ or $\hat{\phi}$. Let $\phi_1, \phi_2, \phi_3, \dots$ be our candidates for $\hat{\phi}_0$ or $\hat{\phi}$. One should stop iterating the EM step (plus optimization with respect to q) when the changes in the

(sub-)probability density $f_k = \exp(\phi_k)$ become negligible. A reasonable distance measure would be the L^1 -distance $\int |f_{k+1}(x) - f_k(x)| dx$, but the following upper bound is much easier to compute and of the same order of magnitude:

$$\int |f_{k+1}(x) - f_k(x)| dx \leq \sum_{j=1}^{N-1} (t_{j+1} - t_j) (J(\bar{m}_j, \bar{m}_{j+1}) - J(\underline{m}_j, \underline{m}_{j+1})) + \exp(\bar{m}_N) \bar{m}_{N+1} - \exp(\underline{m}_N) \underline{m}_{N+1},$$

where \underline{m}_j and \bar{m}_j are the minimum and maximum, respectively, of the set $\{\phi_k(t_j), \phi_{k+1}(t_j)\}$ if $j \leq N$ and of $\{|\phi'_k(t_N +)|^{-1}, |\phi'_{k+1}(t_N +)|^{-1}\}$ if $j = N + 1$.

It happens often that $\phi_k \rightarrow -\infty$ on a non-empty subset of $\text{dom}(\phi_1)$, which may lead to numerical problems or a waste of computation time. One possible way out is as follows: For the computation of $\hat{\phi}_0$ one could replace $\ell(\phi)$ with

$$\frac{\varepsilon_1 \phi(\tau_1) + n \ell(\phi) + \varepsilon_2 \log(\int_{\tau_m}^{\infty} e^{\phi(x)} dx)}{\varepsilon_1 + n + \varepsilon_2}$$

with certain numbers $0 \leq \varepsilon_1, \varepsilon_2 \ll 1$, where $\varepsilon_1 > 0$ unless $L_i = R_i = \tau_1$ for some index i , and $\varepsilon_2 > 0$ unless $(L_j, R_j] = (\tau_m, \infty]$ for some index j . For the computation of $(\hat{\phi}, \hat{q})$ and working with $\Phi_{\mathbf{t}}^o$, we may replace $\ell(\phi, q)$ with

$$\frac{\varepsilon_1 \phi(\tau_1) + n \ell(\phi, q) + \varepsilon_2 \phi(\tau_m)}{\varepsilon_1 + n + \varepsilon_2},$$

where ε_1 is chosen as before, while $\varepsilon_2 > 0$ unless $L_j = R_j = \tau_m$ for some index j . Hence we add artificial ‘‘observations’’ $\{\tau_1\}$ and $(\tau_m, \infty]$ or $\{\tau_m\}$ with very small weights to our original data set.

One can be more ambitious and try to estimate the domain of $\hat{\phi}_0$ or $\hat{\phi}$. That means, whenever there is strong evidence for $\text{dom}(\phi_1)$ being too large, the candidate set $\tilde{\Phi}$ may be reduced as follows:

Possible reduction 1. Suppose that we would like to compute $\hat{\phi}_0$ and that $\tilde{\Phi} = \Phi_{\mathbf{t}}$. With $\theta := \phi'_k(t_N +)$ we may write

$$\frac{\partial}{\partial \theta} \Lambda(\phi_k) = \frac{\exp(\phi_k(t_N))}{\theta^2} \left(\frac{1}{n} \sum_{i=1}^n \frac{1_{[R_i = \infty]}}{P_{\phi_k}((L_i, t_{N-1}]) + \exp(\phi_k(t_N)) / (-\theta)} - 1 \right).$$

The latter is strictly negative for all values of $\theta \in (-\infty, 0)$ if

$$\frac{1}{n} \sum_{i=1}^n \frac{1_{[R_i = \infty]}}{P_{\phi_k}((L_i, t_{N-1}])} \leq 1. \tag{4.6}$$

In that case, and if $\int |f_k(x) - f_{k-1}(x)| dx$ is below some prespecified threshold, we recompute ϕ_k , working from now on with $\tilde{\Phi} = \Phi_{\mathbf{t}}^o$.

Possible reduction 2. Suppose that $\tilde{\Phi} = \Phi_{\mathbf{t}}^o$ and $\#\{i : L_i = R_i = t_N\} = 0$. With $\gamma := \phi_k(t_{N-1})$, $\theta := \phi_k(t_N)$ and $\delta := t_N - t_{N-1}$ we may write

$$\frac{\partial}{\partial \theta} \Lambda(\phi_k, q_k) = \frac{\partial}{\partial \theta} \left(\frac{1}{n} \sum_{i=1}^n 1_{[L_i < t_N \leq R_i]} \log(\pi_{ki} + \delta J(\gamma, \theta)) - \delta J(\gamma, \theta) \right)$$

$$= \delta J_{01}(\gamma, \theta) \left(\frac{1}{n} \sum_{i=1}^n \frac{1_{[L_i < t_N \leq R_i]}}{\pi_{ki} + \delta J(\gamma, \theta)} - 1 \right),$$

where

$$\pi_{ki} := \int_{L_i}^{t_{N-1}} e^{\phi_k(x)} dx + 1_{[R_i = \infty]} q_k$$

and $J_{01}(a, b) := \int_0^1 \exp((1 - t)a + tb)t dt > 0$. Consequently, if $\int |f_k(x) - f_{k-1}(x)| dx$ is below some prespecified threshold and if

$$\frac{1}{n} \sum_{i=1}^n \frac{1_{[L_i < t_N \leq R_i]}}{\pi_{ki}} \leq 1, \tag{4.7}$$

then we recompute ϕ_k , working from now on with $\tilde{\Phi} = \Phi_{(t_1, \dots, t_{N-1})}^o$.

Possible reduction 3. Analogously, suppose that $\tilde{\Phi} = \Phi_t^o$ and $\#\{i : L_i = R_i = t_1\} = 0$. With $\theta := \phi_k(t_1)$, $\gamma := \phi_k(t_2)$ and $\delta := t_2 - t_1$ we may write

$$\frac{\partial}{\partial \theta} \Lambda(\phi_k, q_k) = \delta J_{01}(\gamma, \theta) \left(\frac{1}{n} \sum_{i=1}^n \frac{1_{[L_i = t_1]}}{\pi_{ki} + \delta J(\gamma, \theta)} - 1 \right),$$

where

$$\pi_{ki} := \int_{t_2}^{R_i} e^{\phi_k(x)} dx + 1_{[R_i = \infty]} q_k.$$

Hence if $\int |f_k(x) - f_{k-1}(x)| dx$ is below some prespecified threshold and if

$$\frac{1}{n} \sum_{i=1}^n \frac{1_{[L_i = t_1]}}{\pi_{ki}} \leq 1, \tag{4.8}$$

then we recompute ϕ_k , working from now on with $\tilde{\Phi} = \Phi_{(t_2, \dots, t_N)}^o$.

5. Identifiability and consistency

Partial identifiability of q . Without any shape constraints on $\phi = \log f$, the cure parameter q would not be identifiable. Indeed, with τ_* denoting the maximum of $\{L_1, \dots, L_n\} \cup \{R_1, \dots, R_n\} \cap \mathbb{R}$, the data $\tilde{X}_1, \dots, \tilde{X}_n$ would only provide information about $P = P_{\phi, q}$ on $(-\infty, \tau_*]$ and the number $P((\tau_*, \infty))$. Even if we knew the distribution function F of P on the whole interval $[-\infty, \tau_*]$, we could only conclude that

$$q \in [0, 1 - F(\tau_*)].$$

On the other hand, let ϕ be concave, and suppose we know F only on some bounded interval (a, b) with $F(b-) > 0$. Then we know $F(b)$, $f(b)$ and $\phi'(b-)$ as well, and the unknown parameter $q = 1 - F(b) - \int_0^\infty f(b+s) ds$ satisfies

$$q \begin{cases} \leq 1 - F(b), \\ = 1 - F(b) & \text{if } f(b) = 0, \\ \geq 1 - F(b) - f(b)/|\phi'(b-)| & \text{if } f(b) > 0 > \phi'(b-). \end{cases}$$

The latter inequality follows from $f(b+s) \leq f(b) \exp(\phi'(b-)s)$ for arbitrary $s \geq 0$. Hence if b is sufficiently large, we get an equality or at least nontrivial lower and upper bounds for q .

Consistency. For simplicity we restrict our attention to the setting of interval-censoring: Let $P = P_{\phi,q}$ and $\hat{P}_n = P_{\hat{\phi},\hat{q}}$, where $(\hat{\phi}, \hat{q}) = (\hat{\phi}_n, \hat{q}_n)$ is based on the following observations: For $1 \leq i \leq n$ let $A =: T_{n,i,0} < T_{n,i,1} < \dots < T_{n,i,M_{ni}} < T_{n,i,M_{ni}+1} := \infty$ be given design points, where $A \in [-\infty, \infty)$ is a known lower bound for the support of P . Then observation $\tilde{X}_i = \tilde{X}_{n,i}$ is defined as the unique interval $\mathcal{T}_{n,i,j} = (T_{n,i,j-1}, T_{n,i,j}]$, $1 \leq j \leq M_{ni} + 1$, containing X_i .

For instance, in connection with event times, $A = 0$ and $T_{n,i,1}, \dots, T_{n,i,M_{ni}}$ could be inspection time points at which one determines whether the event in question has already happened or not.

In this setting, Theorem 2.1 guarantees existence of a MLE \hat{P}_n . The following consistency result is essentially Theorem 3 of [3] with obvious modifications of its proof. Throughout this section asymptotic statements refer to $n \rightarrow \infty$.

Theorem 5.1 (Consistency for interval-censored data). *If $n^{-1} \sum_{i=1}^n M_{ni}^\gamma = O(1)$ for some $\gamma > 1/2$, then*

$$\frac{1}{n} \sum_{i=1}^n \sum_{j=1}^{M_{ni}+1} |(\hat{P}_n - P)(\mathcal{T}_{n,i,j})| \rightarrow_p 0.$$

Starting from this general result one can obtain more traditional consistency statements under additional assumptions on the time points $T_{n,i,j}$. In what follows let $F, \hat{F}_n : [-\infty, \infty] \rightarrow [0, 1]$ be the distribution functions of P and \hat{P}_n , respectively. Furthermore let

$$H_n(B) := \frac{1}{n} \sum_{i=1}^n \max_{j=1, \dots, M_{ni}} 1_{[T_{n,i,j} \in B]}$$

for $B \subset \mathbb{R}$. Then Theorem 5.1 implies the following result:

Corollary 5.2 (Consistency for interval-censored data). *Let $n^{-1} \sum_{i=1}^n M_{ni}^\gamma = O(1)$ for some $\gamma > 1/2$.*

(i) *Suppose that $\liminf_{n \rightarrow \infty} H_n([x, y]) > 0$ for two real numbers $x \leq y$. Then*

$$\hat{F}_n(x) \leq F(y) + o_p(1) \quad \text{and} \quad \hat{F}_n(y) \geq F(x) + o_p(1).$$

(ii) *Let $-\infty \leq a < b \leq \infty$ such that $\liminf_{n \rightarrow \infty} H_n((x, y)) > 0$ whenever $a \leq x < y \leq b$. Then*

$$\hat{F}_n(x) \rightarrow_p F(x)$$

for any $x \in (a, b)$.

Suppose, for instance, that $M_{ni} = 1$ for all n and i . A special example for this setting is current status data. Here H_n is the empirical distribution of the time points $T_{n,i,1}$, $1 \leq i \leq n$. If H_n converges weakly to a probability distribution

H on the real line such that the distribution function of H is strictly increasing on an open interval $(a, b) \subset \mathbb{R}$, then the assumption of Corollary 5.2, part (ii) is satisfied.

The subsequent result is no longer restricted to the setting of purely interval-censored data. It shows that pointwise stochastic convergence of \hat{F}_n to F on a nondegenerate interval (a, b) implies uniform convergence in probability, unless F is constant on (a, b) . Furthermore, the corresponding estimator \hat{f}_n of the density $f = e^\phi$ is consistent on (a, b) , too, and the estimator \hat{q}_n of q satisfies certain inequalities. In what follows we denote the positive part of a real number s by $s^+ := \max\{s, 0\}$.

Theorem 5.3 (Weak implies strong convergence). *Let $-\infty \leq a < b \leq \infty$ such that $F(b-) > F(a)$ and $\hat{F}_n(x) \rightarrow_p F(x)$ for any fixed $x \in (a, b)$. For $\delta > 0$ let C_δ be the set of all real $x \in [a, b]$ such that $f(x) > 0$ or f is continuous on $(x \pm \delta)$. Further let D_δ be the set of all real $x \in [a, b]$ such that $1_{(a,b)}f$ is continuous on $(x \pm \delta)$. Then for any fixed $\delta > 0$,*

$$\sup_{x \in C_\delta} (\hat{f}_n(x) - f(x))^+ \rightarrow_p 0 \quad \text{and} \quad \sup_{x \in D_\delta} |\hat{f}_n(x) - f(x)| \rightarrow_p 0.$$

Moreover,

$$\int_a^b |\hat{f}_n(x) - f(x)| dx \rightarrow_p 0 \quad \text{and} \quad \sup_{x \in [a,b]} |\hat{F}_n(x) - F(x)| \rightarrow_p 0.$$

Finally, if $b = \infty$, then $\hat{q}_n \rightarrow_p q$. Otherwise

$$\hat{q}_n \begin{cases} \leq 1 - F(b) + o_p(1), \\ = 1 - F(b) + o_p(1) & \text{if } f(b) = 0, \\ \geq 1 - F(b) - f(b)/|\phi'(b-)| + o_p(1) & \text{if } f(b) > 0 > \phi'(b-). \end{cases}$$

The statements about $\hat{f}_n - f$ in this theorem are similar to results of [10] in the context of log-concave probability densities on \mathbb{R}^d . They imply that

$$\hat{f}_n(x) \rightarrow_p f(x)$$

for any $x \in (a, b)$ at which f is continuous, and

$$\hat{f}_n(y) \leq f(y) + o_p(1)$$

for any real $y \in [a, b]$.

6. Applications

The algorithm described in the previous section was implemented and made publicly available as contributed package `logconcens` [11] for the statistical computing environment R [9]. We give here two demonstrations of this implementation, one for simulated interval-censored data and one for real right-censored data. In both cases we used the domain reduction technique detailed above, but the trick of adding artificial very small or large pseudo-observations with little weights led virtually to the same densities and survival functions.

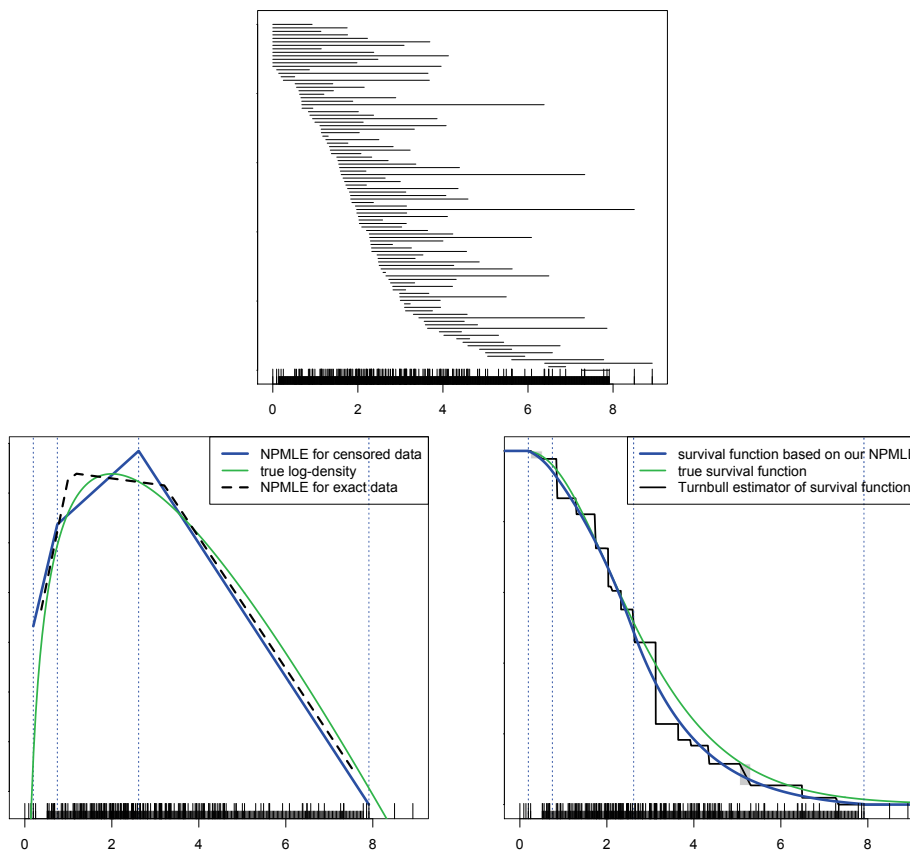


FIG 1. Simulated interval-censored data and a comparison of estimators. The longer tick marks above the x -axis give the interval endpoints τ_1, \dots, τ_m , the shorter tick marks the grid points t_1, \dots, t_N . The faint vertical lines indicate the positions of the knots (changes of slope) of $\hat{\phi}$.

Simulated data. We simulate event times X_i , $1 \leq i \leq 100$, from a $\Gamma(3, 1)$ -distribution and inspect them according to independent homogeneous Poisson processes with rate 1. The latter means that for each i , we consider a random sequence $(T_{i,j})_{j=1}^{\infty}$ which is independent from X_i , starts at $T_{i,1} = 0$ and has independent, standard exponentially distributed increments $T_{i,j} - T_{i,j-1}$, $j \geq 2$. Then \tilde{X}_i is the unique interval $(T_{i,j-1}, T_{i,j}]$, $j \geq 2$, containing X_i .

Figure 1 presents the generated data and comparisons of our log-concave NPMLE in terms of log-densities and survival functions. In the first panel we see the censored data consisting of the n intervals \tilde{X}_i sorted by their left endpoints. The second panel compares our estimator $\hat{\phi}$ to the true log-density of the Gamma distribution and to the NPMLE based on the exact data X_i . The differences are rather small. Note that $\hat{q} = 0$ and $\hat{\phi} = \hat{\phi}_0$ because all right endpoints R_i are finite. The third panel compares the survival function \hat{S} obtained from $\hat{\phi}$ to

the true survival function S and to the unconstrained nonparametric maximum likelihood estimator of the survival function from [14] (produced with the R package `interval`; see [8]). Compared to the latter the survival curve stemming from $\hat{\phi}$ is clearly preferable as it captures not only the approximate course but also the smoothness of the true survival curve.

In order to analyze the performance of the estimators more thoroughly, we simulated 500 data sets by the above procedure and computed $\hat{\phi}$ and \hat{S} every time. The average supremum norm of $|\hat{S} - S|$ was 0.0614, which compares favourably to the value of 0.1540 obtained for the same quantity if we replace \hat{S} with the Turnbull estimate.

To study the performance for a distribution with a positive cure parameter, we also simulated 500 data sets $(X_i, 1 \leq i \leq 100)$ from the distribution $0.7 \cdot \Gamma(3, 1) + 0.3 \cdot \delta_\infty$ and inspected them according to Poisson processes that were restricted to only six inspection times each. The average supremum norm of $|\hat{F} - F| = |\hat{S} - S|$ was then 0.0763 and the average estimation error $|\hat{q} - q|$ for the cure parameter was 0.0514. Replacing \hat{S} and \hat{q} with the Turnbull estimate and its rightmost value, we obtained 0.1482 and 0.07199 respectively.

Of course we benefit in these examples from the fact that the true distribution is really log-concave. On the other hand, many distributions with a non-decreasing hazard rate are log-concave (see [5]) and in the case of slight misspecification of the model, at least for exact data, the log-concave density estimator is still consistent for a close approximation of the true density (see [6]).

Real data. We estimate the survival curve for the data from [7], which is available in the dataset `ovarian` in the R package `survival` [13]. The survival times in days of 26 patients with advanced ovarian carcinoma were recorded along with certain covariate information, which we ignore here. Twelve observations are uncensored and the rest is right-censored.

The data is depicted in the left panel of Figure 2, where a dot represents an exact observation for a patient at a certain time. The right panel shows the survival function based on our estimator $(\hat{\phi}, \hat{q})$ together with the celebrated Kaplan–Meier estimator, which is just the special case of the Turnbull estimator for right-censored data. The cure parameter is estimated at $\hat{q} \approx 0.4944$, which is just slightly below the final level of approximately 0.4967 of the Kaplan–Meier estimator. While it becomes clear from other examples that this is a real rather than a numerical difference, this difference in the cure parameters typically tends to be small.

7. Proofs and technical results

An essential ingredient for the proof of Theorem 2.1 are the following inequalities:

Lemma 7.1. *Let $\phi : \mathbb{R} \rightarrow [-\infty, \infty)$ be a concave function such that $\int_{\mathbb{R}} e^{\phi(t)} dt \leq 1$, and let $x \in \text{dom}(\phi)$. Then for any $y \in \mathbb{R}$ with $|x - y| \geq e^{-\phi(x)}$,*

$$\phi(y) \leq \phi(x) + 1 - e^{\phi(x)}|y - x|.$$

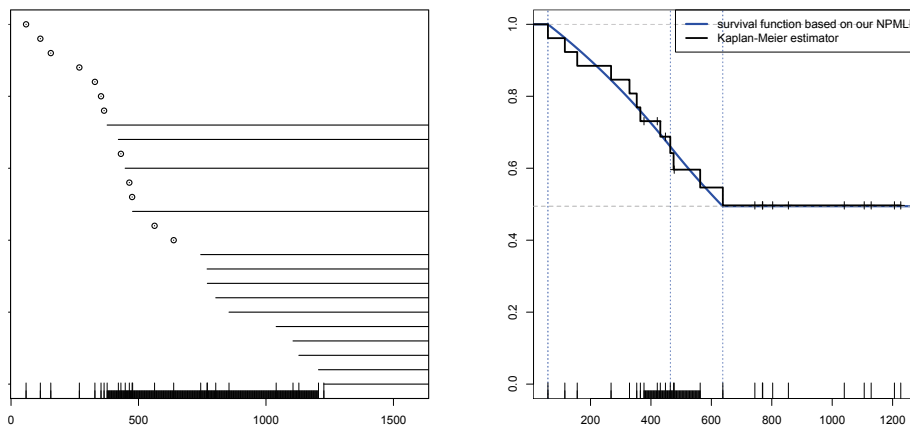


FIG 2. The ovarian cancer data and a comparison of estimators. Note that the set of grid points t_1, \dots, t_N was adapted according to the rules of Theorem 3.5 after each of the domain reduction steps proposed in Section 4. Consequently the final grid (right panel) is concentrated on a much smaller part of the time axis than the original one (left panel).

Moreover, for any $\delta > 0$ and any interval $B \subset [x + \delta, \infty)$ or $B \subset (-\infty, x - \delta]$,

$$\int_B e^{\phi(t)} dt \leq \exp(-e^{\phi(x)}\delta).$$

Proof of Lemma 7.1. Note first that by concavity of ϕ , convexity of the exponential function and Jensen’s inequality,

$$\begin{aligned} \int_{\min(x,y)}^{\max(x,y)} e^{\phi(t)} dt &= |y - x| \int_0^1 \exp(\phi((1 - u)x + uy)) du \\ &\geq |y - x| \int_0^1 \exp((1 - u)\phi(x) + u\phi(y)) du \quad (7.1) \\ &\geq |y - x| \exp(\phi(x)/2 + \phi(y)/2). \quad (7.2) \end{aligned}$$

Since the left hand side is less than or equal to one, and since the right hand side of (7.2) may be written as $|y - x|e^{\phi(x)} \exp(\phi(y) - \phi(x))^{1/2}$, it follows from $|y - x| \geq e^{-\phi(x)}$ that $\gamma := \phi(x) - \phi(y) \geq 0$. But then the right hand side of (7.1) equals

$$|y - x|e^{\phi(x)} \int_0^1 \exp(-\gamma u) du = |y - x|e^{\phi(x)}(1 - e^{-\gamma})/\gamma$$

with $(1 - e^{-0})/0 := 1$. Since $(1 - e^{-\gamma})/\gamma \geq 1/(1 + \gamma)$ for arbitrary $\gamma > 0$, we may conclude that $1 + \gamma \geq e^{\phi(x)}|y - x|$, which is equivalent to $\phi(y) \leq \phi(x) + 1 - |y - x|e^{\phi(x)}$.

As for the second part, let $B \subset [x + \delta, \infty)$. If we define $\phi_o(t) := \phi(x) - e^{\phi(x)}(t - x)$, then $\int_x^\infty e^{\phi_o(t)} dt = 1 \geq \int_x^\infty e^{\phi(t)} dt$, and by concavity of ϕ there exists a number $y_o \in [x, \infty)$ such that $\phi \geq \phi_o$ on $[0, y_o)$ and $\phi \leq \phi_o$ on (y_o, ∞) .

In case of $x + \delta \geq y_o$,

$$\int_B e^{\phi(t)} dt \leq \int_{x+\delta}^\infty e^{\phi_o(t)} dt = \exp(-e^{\phi(x)}\delta).$$

In case of $x + \delta < y_o$,

$$\int_B e^{\phi(t)} dt \leq 1 - \int_x^{x+\delta} e^{\phi(t)} dt \leq 1 - \int_x^{x+\delta} e^{\phi_o(t)} dt = \exp(-e^{\phi(x)}\delta).$$

The case $B \subset (-\infty, x - \delta]$ may be treated analogously. □

Another important ingredient for proving Theorem 2.1 is a slight modification of Lemma 4.2 of [6] which we state without proof:

Lemma 7.2. *Let $\bar{\phi}$ and $\phi_1, \phi_2, \phi_3, \dots$ be concave and upper semicontinuous functions from \mathbb{R} into $[-\infty, \infty)$ such that $\phi_k \leq \bar{\phi}$ for all k . Further suppose that for a compact interval $[a, b] \subset \mathbb{R}$,*

$$\liminf_{k \rightarrow \infty} \max_{x \in [a, b]} \phi_k(x) > -\infty.$$

Then there exists a concave, upper semicontinuous function $\phi : \mathbb{R} \rightarrow [-\infty, \infty)$ and a subsequence $(\phi_{k(j)})_j$ of $(\phi_k)_k$ such that

$$\begin{aligned} \limsup_{j \rightarrow \infty, x \rightarrow x_o} \phi_{k(j)}(x) &\leq \phi(x_o) \quad \text{for any } x_o \in \mathbb{R}, \\ \lim_{j \rightarrow \infty, x \rightarrow x_o} \phi_{k(j)}(x) &= \phi(x_o) \quad \text{for any } x_o \in \text{interior}(\text{dom}(\phi)). \end{aligned}$$

Moreover, $\text{dom}(\phi) \cap [a, b] \neq \emptyset$.

Proof of Theorem 2.1. We first consider $\ell(\cdot, 0)$. According to Lemmas 3.1 and 3.2 it suffices to consider data sets such that

$$\bigcap_{i=1}^n [L_i, R_i] = \emptyset.$$

In other words, there exist indices $i(1), i(2) \in \{1, 2, \dots, n\}$ such that

$$a' := L_{i(1)} \leq R_{i(1)} =: a < b := L_{i(2)} \leq R_{i(2)} =: b'.$$

Now let $(\phi_k)_k$ be a sequence in $\Phi(0)$ such that $\ell(\phi_k, 0) > -\infty$ converges to $\sup_{\phi \in \Phi(0)} \ell(\phi, 0)$ as $k \rightarrow \infty$. This implies that $M_k := \max_{x \in \mathbb{R}} \phi_k(x)$ is bounded. For if $M_k \geq \log((b - a)/2)$ and x_k is a maximizer of ϕ_k , then in case of $x_k \leq (a + b)/2$,

$$\begin{aligned} n\ell(\phi_k, 0) &= \sum_{i \neq i(2)} \left(1_{[L_i=R_i]} \phi_k(X_i) + 1_{[L_i < R_i]} \log \left(\int_{L_i}^{R_i} e^{\phi_k(t)} dt \right) \right) \\ &\quad + 1_{[b=b']} \phi_k(b) + 1_{[b < b']} \log \left(\int_b^{b'} e^{\phi_k(t)} dt \right) \end{aligned}$$

$$\begin{aligned} &\leq (n - 1)M_k^+ \\ &\quad + 1_{[b=b']} \phi_k(b) + 1_{[b < b']} \log\left(\int_b^\infty e^{\phi_k(t)} dt\right) \\ &\leq (n - 1)M_k^+ + (M_k + 1)^+ - (b - x_k)e^{M_k} \\ &\leq n(M_k + 1)^+ - (b - a)e^{M_k}/2 \end{aligned}$$

by Lemma 7.1. Analogous arguments may be applied in case of $x_k \geq (a + b)/2$. This yields both times the inequality

$$n\ell(\phi_k, 0) \leq n(M_k + 1)^+ - (b - a)e^{M_k}/2,$$

and the right hand side tends to $-\infty$ as $M_k \rightarrow \infty$.

Now let M be an upper bound for all maxima M_k . Then it follows from

$$\begin{aligned} n\ell(\phi_k, 0) &\leq (n - 1)M^+ \\ &\quad + 1_{[a'=a]} \phi_k(a) + 1_{[a' < a]} (\max\{\phi_k(a'), \phi_k(a)\} + \log(a - a')) \\ &\leq (n - 1)M^+ + \max\{\phi_k(a'), \phi_k(a)\} + \log(a - a')^+ \end{aligned}$$

that $\max\{\phi_k(a'), \phi_k(a)\}$ is bounded away from $-\infty$, say,

$$\max\{\phi_k(a'), \phi_k(a)\} \geq m > -\infty$$

for all k . But then it follows from Lemma 7.1 that

$$\phi_k(x) \leq \bar{\phi}(x) := M - e^m(x - a - e^{-m})^+ - e^m(a' - x - e^{-m})^+$$

for all k and any $x \in \mathbb{R}$.

Hence we may apply Lemma 7.2 to conclude that after replacing $(\phi_k)_k$ with a subsequence, if necessary, there exists a concave and upper semicontinuous function $\phi : \mathbb{R} \rightarrow [-\infty, \infty)$ such that

$$\begin{aligned} \limsup_{k \rightarrow \infty, x' \rightarrow x} \phi_k(x') &\leq \phi(x) \quad \text{for any } x \in \mathbb{R}, \\ \lim_{k \rightarrow \infty, x' \rightarrow x} \phi_k(x') &= \phi(x) \quad \text{for any } x \in \text{interior}(\text{dom}(\phi)). \end{aligned}$$

In particular, $\lim_{k \rightarrow \infty} \phi_k(x) = \phi(x)$ for all but at most two points $x \in \mathbb{R}$. By dominated convergence, $\int_{\mathbb{R}} e^{\phi(x)} dx = 1$ and $\int |e^{\phi_k(x)} - e^{\phi(x)}| dx \rightarrow 0$ as $k \rightarrow \infty$. Consequently,

$$\lim_{k \rightarrow \infty} \ell(\phi_k, 0) \leq \ell(\phi, 0),$$

i.e. ϕ is a maximizer of $\ell(\cdot, 0)$ over $\Phi(0)$.

Now we consider maximization of $\ell(\cdot)$ over Θ . Without loss of generality we assume that $\infty \in \{R_1, R_2, \dots, R_n\} \neq \{\infty\}$. For if $R_i = \infty$ for all i , then we are in the situation of Lemma 3.1 with $\mu'' = \infty$. If $R_i < \infty$ for all i , then $\ell(\phi - \log(1 - q), 0) = \ell(\phi, q) - \log(1 - q)$ for arbitrary $(\phi, q) \in \Theta$, so we are again maximizing $\ell(\cdot, 0)$.

Let $((\phi_k, q_k))_k$ be a sequence in Θ such that $\ell(\phi_k, q_k) > -\infty$ converges to $\sup_{(\phi, q) \in \Theta} \ell(\phi, q)$ as $k \rightarrow \infty$. In addition we may and do assume that $\lim_{k \rightarrow \infty} q_k$ equals $q_o \in [0, 1]$. Again let x_k be a maximizer of ϕ_k and set $M_k := \phi_k(x_k)$. We

first show that $(M_k)_k$ may be assumed to be bounded. Note that by Lemma 7.1,

$$n\ell(\phi_k, q_k) \leq \sum_{i=1}^n 1_{[R_i < \infty]} ((M_k + 1)^+ - e^{M_k} \rho_{ik})$$

with

$$\rho_{ik} := \min_{y \in [L_i, R_i]} |y - x_k| = \begin{cases} 0 & \text{if } x_k \in [L_i, R_i], \\ \min\{|L_i - x_k|, |R_i - x_k|\} & \text{if } x_k \notin [L_i, R_i]. \end{cases}$$

If $M_k \rightarrow \infty$, then $\rho_{ik} \rightarrow 0$ for all i with $R_i < \infty$. This implies that

$$\bigcap_{i: R_i < \infty} [L_i, R_i] = [\mu', \mu'']$$

for certain real numbers μ', μ'' with $\mu' \leq \liminf_{k \rightarrow \infty} x_k \leq \limsup_{k \rightarrow \infty} x_k \leq \mu''$.

Suppose first that $\tilde{X}_{i_o} = \{X_{i_o}\}$ for some $i_o \in \{1, 2, \dots, n\}$. Then $\mu' = \mu'' = X_{i_o}$, and it follows from Lemma 3.3 that no maximizer of $\ell(\cdot)$ exists.

If there are no uncensored observations, then for each $i \in \{1, 2, \dots, n\}$ either $L_i < \mu''$ or $\mu'' \leq L_i < R_i \leq \infty$. Now we define

$$\begin{aligned} a &:= \max\{L_i : L_i < \mu''\} \in (-\infty, \mu''), \\ b &:= \min\{\{\mu'' + 1\} \cup \{L_i : L_i > \mu''\}\} \in (\mu'', \infty), \end{aligned}$$

and

$$p_{k\ell} := \int_{-\infty}^{\mu''} e^{\phi(t)} dt, \quad p_{kr} := \int_{\mu''}^{\infty} e^{\phi(t)} dt,$$

so $p_{k\ell} + p_{kr} + q_k = 1$. Then

$$\begin{aligned} n\ell(\phi_k, q_k) &\leq \#\{i : L_i < R_i = \mu''\} \log(p_{k\ell}) \\ &\quad + \#\{i : L_i < \mu'' < R_i < \infty\} \log(1 - q_k) \\ &\quad + \#\{i : L_i = \mu'' < R_i < \infty\} \log(p_{kr}) \\ &\quad + \#\{i : L_i = \mu'' < R_i = \infty\} \log(p_{kr} + q_k) \\ &\quad + \#\{i : L_i > \mu''\} \log(\exp(-e^{M_k}(b - x_k)) + q_k). \end{aligned}$$

This implies that $\liminf_{k \rightarrow \infty} q_k > 0$ if $L_i > \mu''$ for some i , because $e^{M_k}(b - x_k) \rightarrow \infty$ as $k \rightarrow \infty$. Thus we may conclude that

$$\begin{aligned} n\ell(\phi_k, q_k) &\leq \#\{i : L_i < R_i = \mu''\} \log(p_{k\ell}) \\ &\quad + \#\{i : L_i < \mu'' < R_i < \infty\} \log(1 - q_k) \\ &\quad + \#\{i : L_i = \mu'' < R_i < \infty\} \log(p_{kr}) \\ &\quad + \#\{i : L_i = \mu'' < R_i = \infty\} \log(p_{kr} + q_k) \\ &\quad + \#\{i : L_i > \mu''\} \log(q_k) + o(1) \\ &= n\ell(\tilde{\phi}_k, q_k) + o(1), \end{aligned}$$

where

$$\tilde{\phi}_k(t) := \begin{cases} -\log(\min\{\mu'' - a, b - \mu''\}) - \gamma_{k\ell}(\mu'' - t) & \text{for } t \in [a, \mu''], \\ -\log(\min\{\mu'' - a, b - \mu''\}) - \gamma_{kr}(t - \mu'') & \text{for } t \in [\mu'', b], \\ -\infty & \text{for } t \in \mathbb{R} \setminus [a, b], \end{cases}$$

and $\gamma_{k\ell}, \gamma_{kr} \geq 0$ are chosen such that $\int_a^{\mu''} e^{\tilde{\phi}_k(t)} dt = p_{k\ell}$ and $\int_{\mu''}^b e^{\tilde{\phi}_k(t)} dt = p_{kr}$.

The previous considerations show that, after replacing $(\phi_k)_k$ with a surrogate sequence if necessary, we may assume that $\phi_k \leq M$ for all k and some real constant M . Next we show that the limit q_o of $(q_k)_k$ is strictly smaller than one. Note that

$$n\ell(\phi_k, q_k) \leq \#\{i : L_i = R_i\}M + \#\{i : L_i < R_i < \infty\} \log(1 - q_k),$$

so $q_o = 1$ would imply that each observation has to be uncensored or of the form $(L_i, \infty]$. If all uncensored observations would be identical, we could conclude from Lemma 3.3 that there exists no maximizer of $\ell(\cdot)$. If $a := L_{i(1)} = R_{i(1)} < b := L_{i(2)} = R_{i(2)}$ for certain indices $i(1), i(2) \in \{1, 2, \dots, n\}$, then

$$n\ell(\phi_k, q_k) \leq (n - 1)M + \min\{\phi_k(a), \phi_k(b)\}.$$

Hence $\min\{\phi_k(a), \phi_k(b)\} \geq m$ for all k and a certain number $m > -\infty$. But then $q_k \leq 1 - \int_a^b e^{\phi_k(t)} dt \leq 1 - (b - a)e^m$, a contradiction to $\lim_{k \rightarrow \infty} q_k = 1$.

Thus we may assume that $\phi_k \leq M$ for all k and $\lim_{k \rightarrow \infty} q_k = q_o \in [0, 1)$. Let $[a, b] := [L_{i_o}, R_{i_o}]$ for some i_o with $R_{i_o} < \infty$. Then

$$n\ell(\phi_k, q_k) \leq (n - 1)M^+ + \max_{x \in [a, b]} \phi_k(x) + 1_{[a < b]} \log(b - a).$$

Consequently, $\max_{x \in [a, b]} \phi_k(x) \geq m$ for all k and some real number m . Hence Lemma 7.1 implies that

$$\phi_k(x) \leq \bar{\phi}(x) := M - e^m(x - b - e^{-m})^+ - e^m(a - x - e^{-m})^+.$$

Again we may apply Lemma 7.2 and dominated convergence to conclude that there exists a function $\phi \in \Phi(q_o)$ such that $\limsup_{k \rightarrow \infty} \ell(\phi_k, q_k) \leq \ell(\phi, q_o)$. \square

Proof of Lemma 3.1. Note first that all observations satisfy $L_i \leq \mu' < \mu'' \leq R_i$. Hence

$$\ell(\phi, q) = \frac{1}{n} \sum_{i=1}^n \log P_{\phi, q}((L_i, R_i]) \leq 0$$

with equality if, and only if, $P_{\phi, q}((L_i, R_i]) = 1$ for $1 \leq i \leq n$. But this is easily shown to be equivalent to $P_{\phi, q}((\mu', \mu'']) = 1$. \square

Proof of Lemma 3.2. Suppose first that $\{\mu\} \subset [L_i, R_i]$ for all indices i with at least one equality. For $\varepsilon > 0$,

$$\phi_\varepsilon(x) := -\log(2\varepsilon) - |x - \mu|/\varepsilon$$

defines a log-density in $\Phi(0)$ such that

$$\lim_{\varepsilon \downarrow 0} \phi_\varepsilon(\mu) = \infty,$$

$$\lim_{\varepsilon \downarrow 0} \int_{L_i}^{R_i} e^{\phi_\varepsilon(x)} dx = \begin{cases} 1/2 & \text{if } L_i < \mu = R_i \text{ or } L_i = \mu < R_i, \\ 1 & \text{if } L_i < \mu < R_i. \end{cases}$$

Hence $\ell(\phi_\varepsilon) \rightarrow \infty$ as $\varepsilon \downarrow 0$ which implies the first assertion.

If $\bigcap_{i=1}^n [L_i, R_i] = \{\mu\}$ but $[L_i, R_i] \neq \{\mu\}$ for all indices i , then

$$\ell(\phi, q) = \frac{1}{n} \sum_{i=1}^n \log P((L_i, R_i])$$

with $P := P_{\phi, q}$. But

$$P((L_i, R_i]) \leq \begin{cases} P((-\infty, \mu]) & \text{if } L_i < \mu = R_i \\ 1 & \text{if } L_i < \mu < R_i \\ P((\mu, \infty]) & \text{if } L_i = \mu < R_i \end{cases}$$

with equality if, and only if, $P((-\infty, a]) = P((b, \infty]) = 0$. Thus

$$\ell(\phi, q) \leq \frac{n_\ell}{n} \log P((-\infty, \mu]) + \frac{n_r}{n} \log P((\mu, \infty])$$

with equality if, and only if, $P((-\infty, \mu]) = P((a, \mu])$ and $P((\mu, \infty]) = P((\mu, b])$. Writing $x := P((\mu, \infty]) \in [0, 1]$, we end up with the upper bound

$$\ell(\phi, q) \leq \frac{n_\ell}{n} \log(1 - x) + \frac{n_r}{n} \log(x).$$

Finally, this bound becomes maximal if, and only if, $x = n_r / (n_\ell + n_r)$. □

Proof of Lemma 3.3. We fix an arbitrary value $q \in (0, 1)$ for $P(\{\infty\})$. Then

$$\phi_\varepsilon(x) := \log(1 - q) - \log(2\varepsilon) - |x - \mu|/\varepsilon$$

defines a function in $\Phi(q)$ such that $\ell(\phi_\varepsilon, q) \rightarrow \infty$ as $\varepsilon \rightarrow 0$, because $\phi_\varepsilon(\mu) \rightarrow \infty$ as $\varepsilon \rightarrow 0$ while $\liminf_{\varepsilon \rightarrow 0} P_{\phi_\varepsilon, q}((a, b]) \geq \min\{(1 - q)/2, q\}$, whenever $a < b$ and $\mu \in [a, b]$ or $b = \infty$. □

Proof of Lemma 3.4. Let $(\phi, q) \in \Theta$ such that $\ell(\phi, q) > -\infty$ and $\delta := P_{\phi, q}((-\infty, \infty] \setminus [a, b]) > 0$. If $\delta < 1$, then

$$\tilde{\phi}(x) := \begin{cases} \phi(x) - \log(1 - \delta) & \text{for } x \in [a, b] \\ -\infty & \text{for } x \notin [a, b] \end{cases}$$

$$\tilde{q} := q / (1 - \delta)$$

defines a new pair $(\tilde{\phi}, \tilde{q}) \in \Theta$ such that $\ell(\tilde{\phi}, \tilde{q}) = \ell(\phi, q) - \log(1 - \delta)$ and $\text{dom}(\tilde{\phi}) \subset [a, b]$.

If $\delta = 1$, then we would be in one of the following two situations:

Situation 1: $a \in \text{dom}(\phi) \subset (-\infty, a]$, and all observations are equal to $\{a\}$ or contain ∞ . If all observations are equal to $\{a\}$, then Lemma 3.2 would apply and exclude the existence of $\hat{\phi}_0$ or $(\hat{\phi}, \hat{q})$. If at least one observations contains ∞ , then $\ell(\phi, 0) = -\infty$, and Lemma 3.3 would exclude the existence of $(\hat{\phi}, \hat{q})$.

Situation 2: $b \in \text{dom}(\phi) \subset [b, \infty)$, and all observations are equal to $\{b\}$. Here Lemma 3.2 would exclude the existence of $\hat{\phi}_0$ or $(\hat{\phi}, \hat{q})$. □

Our proof of Theorem 3.5 is based on the following two results:

Lemma 7.3. *Let $a < b < c$ be real numbers and $\phi : [a, c] \rightarrow \mathbb{R}$ continuous and concave. Then there exist real numbers*

$$\gamma_\ell \in \left[\frac{\phi(b) - \phi(a)}{b - a}, \phi'(a+) \right] \quad \text{and} \quad \gamma_r \in \left[\phi'(c-), \frac{\phi(c) - \phi(b)}{c - b} \right]$$

such that

$$\tilde{\phi}(t) := \min\{\phi(a) + \gamma_\ell(t - a), \phi(c) + \gamma_r(t - c)\}$$

satisfies

$$\int_a^b e^{\tilde{\phi}(t)} dt = \int_a^b e^{\phi(t)} dt \quad \text{and} \quad \int_b^c e^{\tilde{\phi}(t)} dt = \int_b^c e^{\phi(t)} dt.$$

Lemma 7.4. *Let $-\infty < a < c \leq \infty$ and $B := [a, c] \cap \mathbb{R}$. Further let $\phi : B \rightarrow [-\infty, \infty)$ be concave and upper semicontinuous such that $\phi(a) > -\infty$ and $0 < \int_B e^{\phi(x)} dx < \infty$.*

(i) *Let γ be the unique real number such that $\tilde{\phi}(x) := \phi(a) + \gamma(x - a)$ satisfies the equation $\int_B e^{\tilde{\phi}(x)} dx = \int_B e^{\phi(x)} dx$. Then $\tilde{\phi}(a) = \phi(a)$, $\gamma \leq \phi'(a+)$, and $\tilde{\phi}(c) \geq \phi(c)$ in case of $c < \infty$. The latter two inequalities are strict unless $\tilde{\phi} \equiv \phi$.*

(ii) *Suppose that $c < \infty$ and $\phi(c) > -\infty$, $\phi'(c-) > -\infty$. Let γ be the unique real number such that*

$$\tilde{\phi}(x) := \min\{\phi(a) + \gamma(x - a), \phi(c) + \phi'(c-)(x - c)\}$$

satisfies the equation $\int_B e^{\tilde{\phi}(x)} dx = \int_B e^{\phi(x)} dx$. Then $\tilde{\phi} = \phi$ on $\{a, c\}$ and $(\phi(c) - \phi(a))/(c - a) \leq \gamma \leq \phi'(a+)$.

(iii) *The function $\tilde{\phi}$ in part (i) and (ii) satisfies*

$$\int_b^c e^{\tilde{\phi}(x)} dx \geq \int_b^c e^{\phi(x)} dx \quad \text{for } a < b < c.$$

Lemmas 7.3 and 7.4 are illustrated in Figures 3 and 4, respectively. In both cases one sees a strictly concave and continuous function $\phi : [a, c] \rightarrow \mathbb{R}$, the points a and c being indicated by vertical lines, and the respective surrogate functions $\tilde{\phi}$.

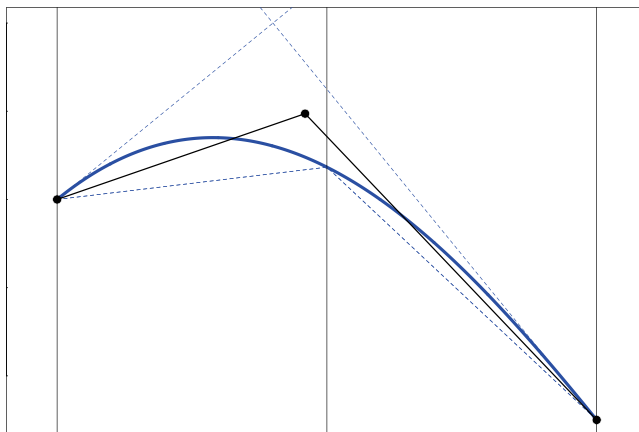


FIG 3. Illustration of Lemma 7.3.

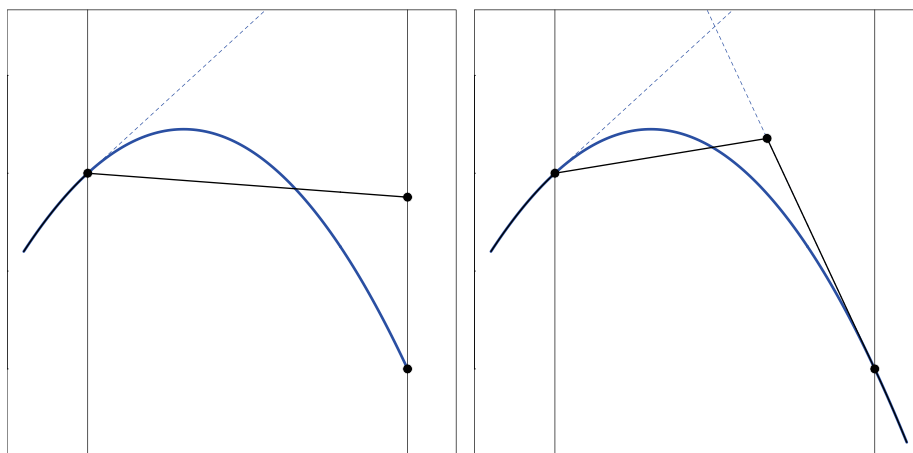


FIG 4. Illustration of Lemma 7.4, part (i) on the left and part (ii) on the right hand side.

Proof of Lemma 7.3. Let

$$\tilde{\phi}(t) := \min\{\phi(a) + \gamma_\ell(t - a), \phi(c) + \gamma_r(t - c)\}$$

with certain constants $\gamma_\ell \geq (\phi(c) - \phi(a))/(c - a) \geq \gamma_r$ yet to be specified. This is done in two steps. First let

$$\gamma_\ell := \frac{y - \phi(a)}{b - a} \quad \text{and} \quad \gamma_r := \frac{\phi(c) - y}{c - b}$$

for some real number $y \geq \phi(b)$. That means, $\tilde{\phi}$ is a triangular function connecting the points $(a, \phi(a))$, (b, y) and $(c, \phi(c))$. Now we choose y as large as possible

such that still

$$\int_a^b e^{\tilde{\phi}(t)} dt \leq \int_a^b e^{\phi(t)} dt, \tag{7.3}$$

$$\int_b^c e^{\tilde{\phi}(t)} dt \leq \int_b^c e^{\phi(t)} dt. \tag{7.4}$$

This means, at least one of the former two inequalities is an equality. It follows from $y \geq \phi(b)$ that $\gamma_\ell \geq (\phi(b) - \phi(a))/(b - a)$ and $\gamma_r \leq (\phi(c) - \phi(b))/(c - b)$.

Now comes the second step: If (7.3) is strict, we replace the current slope γ_ℓ by a larger value such that (7.3) becomes an equality. Likewise, if (7.4) is strict, we replace the current slope γ_r by a smaller value such that (7.3) becomes an equality. One can easily verify that $\gamma_\ell \leq \phi'(a+)$ and $\gamma_r \geq \phi'(c-)$. \square

Proof of Lemma 7.4. Existence and uniqueness of the surrogate function $\tilde{\phi}$ follow from elementary considerations in both scenarios (i) and (ii). One can also verify easily that either $\tilde{\phi} \equiv \phi$, or $\gamma < \phi'(a+)$ and there exists a number $b_o \in (a, c)$ such that

$$\tilde{\phi} \begin{cases} \leq \phi & \text{on } (a, b_o), \\ \geq \phi & \text{on } (b_o, c] \cap \mathbb{R}. \end{cases}$$

The latter conditions imply the inequalities of part (iii). For if $b \in [b_o, c)$, then the inequality $\int_b^c e^{\tilde{\phi}(x)} dx \geq \int_b^c e^{\phi(x)} dx$ is obvious. If $b \in (a, b_o]$, then

$$\int_b^c e^{\tilde{\phi}(x)} dx = D - \int_a^b e^{\tilde{\phi}(x)} dx \geq D - \int_a^b e^{\phi(x)} dx = \int_b^c e^{\phi(x)} dx,$$

where $D := \int_a^c e^{\tilde{\phi}(x)} dx = \int_a^c e^{\phi(x)} dx$. \square

Proof of Theorem 3.5. By means of Lemma 7.4, applied to ϕ or $\phi(-\cdot)$, we will first construct a concave function $\tilde{\phi}$ with $\text{dom}(\phi) \subset \text{dom}(\tilde{\phi}) \in [\tau_1, \infty)$ such that $\tilde{\phi} \geq \phi$ on $\{\tau_1, \tau_2, \dots, \tau_m\}$ and $\int_{\tau_j}^{\tau_{j+1}} e^{\tilde{\phi}(t)} dt = \int_{\tau_j}^{\tau_{j+1}} e^{\phi(t)} dt$ for $1 \leq j \leq m$.

Precisely, let $j \in \{1, 2, \dots, m\}$. If $\text{dom}(\phi) \cap (\tau_j, \tau_{j+1}) = \emptyset$, then we set $\tilde{\phi} := -\infty$ on (τ_j, τ_{j+1}) . If $\text{dom}(\phi) \cap (\tau_j, \tau_{j+1}) \neq \emptyset$ but $\phi(\tau_j) = \phi(\tau_{j+1}) = -\infty$, then $\text{dom}(\phi) \subset (\tau_j, \tau_{j+1})$, and for $x \in [\tau_j, \tau_{j+1}] \cap \mathbb{R}$ we may define $\tilde{\phi}(x) := -\log(\tau_{j+1} - \tau_j)$ if $\tau_j < \infty$ or $\tilde{\phi}(x) = -(x - \tau_m)$ if $j = m$.

Suppose that $\tau_j \in \text{dom}(\phi)$ but either $\tau_{j+1} \notin \text{dom}(\phi)$ or $\phi'(\tau_{j+1}-) = -\infty$. Then $\text{dom}(\phi) \subset (-\infty, \tau_{j+1}]$, and we may define $\tilde{\phi}$ on $[\tau_j, \tau_{j+1}] \cap \mathbb{R}$ as described in part (i) of Lemma 7.4, where $a = \tau_j$ and $c = \tau_{j+1}$.

Suppose that $j < m$ and $\tau_{j+1} \in \text{dom}(\phi)$ but either $\tau_j \notin \text{dom}(\phi)$ or $\phi'(\tau_j+) = \infty$. Then we may apply part (i) Lemma 7.4 with $\phi(-\cdot)$ in place of ϕ and $a = -\tau_{j+1}$, $c = -\tau_j$.

If $\tau_j, \tau_{j+1} \in \text{dom}(\phi)$ and both derivatives $\phi'(\tau_j+)$, $\phi'(\tau_{j+1}-)$ exist in \mathbb{R} , we may apply part (ii) of Lemma 7.4 to define $\tilde{\phi}$ on $[\tau_j, \tau_{j+1}]$ such that it is piecewise linear with at most one change of slope in the interior while

$$\tilde{\phi}(\tau_j) = \phi(\tau_j), \quad \tilde{\phi}'(\tau_j+) \leq \phi'(\tau_j+),$$

$$\tilde{\phi}(\tau_{j+1}) = \phi(\tau_{j+1}) \quad \text{and} \quad \tilde{\phi}'(\tau_{j+1} -) \geq \phi'(\tau_{j+1} -).$$

To complete the proof of property (i), we have to modify $\tilde{\phi}$ in two cases: First suppose that $[\tau_{m-1}, \infty) \subset \text{dom}(\tilde{\phi})$. Then $\tilde{\phi}$ is linear on $[\tau_m, \infty)$, but it may have one change of slope within (τ_{m-1}, τ_m) . If yes, we may redefine it on $[\tau_{m-1}, \tau_m]$ to be linear such that $\tilde{\phi}(\tau_{m-1})$ remains the same, $\tilde{\phi}'(\tau_{m-1} +)$ becomes smaller and $\tilde{\phi}(\tau_m)$ becomes larger. Thereafter we may decrease the slope of $\tilde{\phi}$ on (τ_m, ∞) such that the original value of $\int_{\tau_m}^{\infty} e^{\tilde{\phi}(t)} dt$ is restored.

Secondly, suppose that $(\tau_j, \tau_{j+1}) \subset \mathbb{R} \setminus \bigcup_{i=1}^n [L_i, R_i]$ and $\tau_j, \tau_{j+1} \in \text{dom}(\tilde{\phi})$ for some $j \leq m - 2$. If $\tilde{\phi}$ is not linear on $[\tau_j, \tau_{j+1}]$, then we define

$$s := \frac{\tilde{\phi}(\tau_{j+1}) - \tilde{\phi}(\tau_j)}{\tau_{j+1} - \tau_j},$$

$$\delta := \int_{\tau_j}^{\tau_{j+1}} e^{\tilde{\phi}(t)} dt - \int_{\tau_j}^{\tau_{j+1}} e^{\tilde{\phi}(\tau_j) + s(t - \tau_j)} dt$$

and

$$\check{\phi}(t) := \log\left(\frac{1 - q}{1 - q - \delta}\right) + \begin{cases} \tilde{\phi}(t) & \text{if } t \in (-\infty, \tau_j] \cup [\tau_{j+1}, \infty), \\ \tilde{\phi}(\tau_j) + s(t - \tau_j) & \text{if } t \in [\tau_j, \tau_{j+1}]. \end{cases}$$

Then $(\check{\phi}, q) \in \Theta$, too, and $\check{\phi} = \tilde{\phi} + \log((1 - q)/(1 - q - \delta))$ on $\bigcup_{i=1}^n [L_i, R_i] \cap \mathbb{R}$. Hence $\ell(\check{\phi}, q) > \ell(\tilde{\phi}, q)$, so we may replace $\tilde{\phi}$ with $\check{\phi}$.

Now we modify $\check{\phi}$ further, if necessary, such that it satisfies property (ii) as well. If $\check{\phi}$ is not linear on $[\tau_j, \tau_\ell] \cap \mathbb{R}$, we may redefine it on $[\tau_j, \tau_\ell]$ as described in part (i) of Lemma 7.4. Then the inequalities in part (iii) of Lemma 7.4 and our assumptions on the $\tau_k, j < k < \ell$, imply that this modification yields a larger value of $\ell(\check{\phi}, q)$. Similarly one may enforce property (iii).

Finally, if $2 \leq j \leq m - 1$ such that $[\tau_{j-1}, \tau_{j+1}] \subset \text{dom}(\tilde{\phi})$, we may redefine $\tilde{\phi}$ on $[\tau_{j-1}, \tau_{j+1}]$ as described in Lemma 7.3, where $(a, b, c) = (\tau_{j-1}, \tau_j, \tau_{j+1})$, without decreasing $\ell(\tilde{\phi}, q)$. This proves property (iv). \square

Proof of Lemma 4.2. In case of a probability measure M , Lemma 4.2 is just a special case of Theorem 2.2 of [6]. If $\gamma := M(\mathbb{R}) \neq 1$, then $\tilde{M} := \gamma^{-1}M$ defines a probability measure on \mathbb{R} , and $S(M) = \{x \in \mathbb{R} : 0 < \tilde{M}((-\infty, x]) < 1\}$. Moreover, for any function $\phi \in \Phi$ and $\check{\phi} := \phi - \log \gamma$,

$$\int \check{\phi} d\tilde{M} - \int e^{\check{\phi}(x)} dx = \gamma^{-1} \left(\int \phi dM - \int e^{\phi(x)} dx \right) - \log \gamma.$$

Consequently, $\phi \in \Phi$ maximizes $\int \phi dM - \int e^{\phi(x)} dx$ over Φ if, and only if, $\check{\phi} = \phi - \log \gamma$ maximizes $\int \check{\phi} d\tilde{M} - \int e^{\check{\phi}(x)} dx$. But $\text{dom}(\check{\phi}) = \text{dom}(\phi)$, and in case of $\check{\phi}$ being optimal, $1 = \int e^{\check{\phi}(x)} dx = \gamma^{-1} \int e^{\phi(x)} dx$, so $\int e^{\phi(x)} dx = M(\mathbb{R})$. \square

Proof of Corollary 5.2. For fixed $\varepsilon > 0$ and real numbers $x \leq y$, monotonicity of F and \hat{F}_n implies that

$$|\hat{F}_n - F| \geq \varepsilon \text{ on } [x, y] \quad \text{whenever} \quad \hat{F}_n(x) \geq F(y) + \varepsilon \text{ or } F(x) \geq \hat{F}_n(y) + \varepsilon.$$

On the other hand, for $1 \leq i \leq n$ and $1 \leq j \leq M_{ni}$,

$$\sum_{k=1}^{M_{ni}+1} |(\hat{P}_n - P)(\mathcal{T}_{n,i,k})| \geq |(\hat{F}_n - F)(T_{n,i,j})|.$$

Thus $\hat{F}_n(x) \geq F(y) + \varepsilon$ or $F(x) \geq \hat{F}_n(y) + \varepsilon$ implies that

$$\frac{1}{n} \sum_{i=1}^n \sum_{k=1}^{M_{ni}+1} |(\hat{P}_n - P)(\mathcal{T}_{n,i,k})| \geq H_n([x, y])\varepsilon.$$

If $\liminf_{n \rightarrow \infty} H_n([x, y]) > 0$, the latter inequality occurs by Theorem 5.1 with asymptotic probability zero, which proves part (i).

Part (ii) is a simple consequence of part (i) and continuity of F . For fixed $x \in (a, b)$ and $\delta > 0$, we know from part (i) and the assumptions in part (ii) that $\hat{F}_n(x) \leq F(x + \delta) + o_p(1)$ and $\hat{F}_n(x) \geq F(x - \delta) + o_p(1)$. Since $F(x \pm \delta) \rightarrow F(x)$ as $\delta \downarrow 0$, this shows that $\hat{F}_n(x) \rightarrow_p F(x)$. \square

Theorem 5.3 is closely related to results of [10] in the context of log-concave probability densities on \mathbb{R}^d . For the reader's convenience a self-contained proof is given here. We start with some elementary inequalities:

Lemma 7.5. *Let $x_0 < x_1 < x_2 < x_3$ be real numbers such that*

$$c_j := \log \frac{P([x_j, x_{j+1}])}{x_{j+1} - x_j} \in \mathbb{R}$$

for $j = 0, 1, 2$. Then

$$\min\{c_0, c_2\} \leq \phi \leq 2c_1 - \min\{c_0, c_2\} \quad \text{on } [x_1, x_2].$$

Proof of Lemma 7.5. For $j = 0, 2$ let z_j be a maximizer of ϕ over $[x_j, x_{j+1}]$. By concavity, the function ϕ is bounded from below by $\min\{\phi(z_0), \phi(z_2)\} \geq \min\{c_0, c_2\}$ on $[z_0, z_2] \supset [x_1, x_2]$. On the other hand, note first that for real numbers $x' < x''$,

$$\frac{P([x', x''])}{x'' - x'} \geq \sqrt{f(x')f(x'')},$$

see (7.2). Thus for $x \in [x_1, x_2]$,

$$\begin{aligned} c_1 &= \log \frac{P([x_1, x]) + P([x, x_2])}{x_2 - x_1} \\ &\geq \log \left(\frac{x - x_1}{x_2 - x_1} \sqrt{f(x_1)f(x)} + \frac{x_2 - x}{x_2 - x_1} \sqrt{f(x)f(x_2)} \right) \\ &\geq \log \sqrt{f(x) \min\{f(x_1), f(x_2)\}} \\ &\geq (\min\{c_0, c_2\} + \phi(x))/2, \end{aligned}$$

whence $\phi(x) \leq 2c_1 - \min\{c_0, c_2\}$. \square

Proof of Theorem 5.3. We first prove the assertions about the density estimator \hat{f}_n . Let a_o and b_o denote the infimum and supremum of $\text{dom}(\phi) \cap (a, b)$, respectively. For any $x \in (a_o, b_o)$ and $\varepsilon > 0$ there exists a $\delta = \delta(x, \varepsilon) > 0$ such that $[x \pm 2\delta] \subset (a_o, b_o)$ and $|\phi(y') - \phi(y'')| \leq \varepsilon$ for all $y', y'' \in [x \pm 2\delta]$. Now we apply Lemma 7.5 to $x_0 := x - 2\delta$, $x_1 := x - \delta$, $x_2 := x + \delta$ and $x_3 := x + 2\delta$. One can easily verify that

$$|c_j - c_k| \leq \varepsilon \quad \text{and} \quad |\phi(y) - c_j| \leq \varepsilon$$

for $j, k = 0, 1, 2$ and $y \in [x \pm 2\delta]$. Moreover, defining \hat{c}_{nj} as c_j with \hat{P}_n in place of P , our assumption on \hat{F}_n implies that with asymptotic probability 1,

$$|\hat{c}_{nj} - c_j| \leq \varepsilon \quad \text{for } j = 0, 1, 2.$$

In this case, for any $y \in [x \pm \delta]$,

$$\begin{aligned} \hat{\phi}_n(y) - \phi(y) &\geq \min\{\hat{c}_{n0}, \hat{c}_{n2}\} - \phi(y) \\ &\geq \min\{c_0, c_2\} - \phi(y) - \varepsilon \geq -2\varepsilon, \\ \hat{\phi}_n(y) - \phi(y) &\leq 2\hat{c}_{n1} - \min\{\hat{c}_{n0}, \hat{c}_{n2}\} - \phi(y) \\ &\leq 2c_1 - \min\{c_0, c_2\} - \phi(y) + 3\varepsilon \leq 5\varepsilon. \end{aligned}$$

Consequently, for any $x \in (a_o, b_o)$ and $\varepsilon > 0$ there exists a $\delta = \delta(x, \varepsilon) > 0$ such that

$$\sup_{y \in [x \pm \delta]} |\hat{\phi}_n(y) - \phi(y)| \leq 5\varepsilon$$

with asymptotic probability 1. These considerations prove that

$$\sup_{x \in K_o} |\hat{f}_n(x) - f(x)| \rightarrow_p 0 \quad \text{for any compact } K_o \subset (a_o, b_o). \quad (7.5)$$

Now we fix some point $x_o \in (a_o, b_o)$ and analyze $|\hat{f}_n - f|$ on $[x_o, b] \cap \mathbb{R}$. To this end we distinguish two different cases:

Case 1: $b_o = b = \infty$ or $f(b_o) = 0$. We fix a point $b_* \in (x_o, b_o)$ such that $\phi(x_o) > \phi(b_*)$. It follows from (7.5) that $|\hat{f}_n - f| \rightarrow_p 0$ uniformly on $[x_o, b_*]$. Whenever $\hat{f}_n(b_*), \hat{f}_n(x_o) > 0$, it follows from concavity of ϕ and $\hat{\phi}_n$ that for $x \geq b_*$,

$$\max\{f(x), \hat{f}_n(x)\} \leq \max\{f(b_*), \hat{f}_n(b_*)\} \exp(-\hat{\beta}_n(b_*)(x - b_*))$$

with

$$\begin{aligned} \hat{\beta}_n(b_*) &:= \frac{\min\{\phi(x_o), \hat{\phi}_n(x_o)\} - \max\{\phi(b_*), \hat{\phi}_n(b_*)\}}{b_* - x_o} \\ &\rightarrow_p \frac{\phi(x_o) - \phi(b_*)}{b_* - x_o} =: \beta(b_*) > 0. \end{aligned}$$

Consequently,

$$\begin{aligned} \sup_{x \geq x_o} |\hat{f}_n(x) - f(x)| &\leq \sup_{x \geq b_*} |\hat{f}_n(x) - f(x)| + o_p(1) \\ &\leq f(b_*) + o_p(1), \\ \int_{x_o}^\infty |\hat{f}_n(x) - f(x)| dx &\leq \int_{b_*}^\infty |\hat{f}_n(y) - f(y)| dy + o_p(1) \\ &\leq f(b_*)/\beta(b_*) + o_p(1). \end{aligned}$$

Since $\beta(b_*)$ is non-decreasing in $b_* > x_o$ and $\lim_{b_* \rightarrow \infty} f(b_*) = 0$, this shows that

$$\sup_{x \geq x_o} |\hat{f}_n(x) - f(x)| \rightarrow_p 0 \quad \text{and} \quad \int_{x_o}^\infty |\hat{f}_n(x) - f(x)| dx \rightarrow_p 0.$$

Case 2: $b_o < \infty$ and $f(b_o) > 0$. Here we fix an arbitrary point $b_* \in (x_o, b_o)$. Again, $|\hat{f}_n - f| \rightarrow_p 0$ uniformly on $[x_o, b_*]$. Moreover, by concavity of $\hat{\phi}_n$ and ϕ , for any $x \in [b_*, b_o]$,

$$\begin{aligned} \hat{f}_n(x) &\leq \hat{f}_n(b_*) \exp\left(\frac{(\hat{\phi}_n(b_*) - \hat{\phi}_n(x_o))(x - b_*)}{(b_* - x_o)}\right) \\ &\leq \hat{f}_n(b_*) \exp\left(\frac{(\hat{\phi}_n(b_*) - \hat{\phi}_n(x_o))^+(b_o - b_*)}{(b_* - x_o)}\right) \\ &= \hat{f}_n(b_*) \max\left\{\frac{\hat{f}_n(b_*)}{\hat{f}_n(x_o)}, 1\right\}^{(b_o - b_*)/(b_* - x_o)} \\ &\rightarrow_p \bar{h}(b_*, b_o) := f(b_*) \max\{f(b_*)/f(x_o), 1\}^{(b_o - b_*)/(b_* - x_o)}, \end{aligned}$$

and

$$\underline{h}(b_*, b_o) := \min\{f(b_*), f(b_o)\} \leq f(x) \leq \bar{h}(b_*, b_o).$$

Thus

$$\begin{aligned} \max_{x \in [x_o, b_o]} (\hat{f}_n(x) - f(x))^+ &= \max_{x \in [b_*, b_o]} (\hat{f}_n(x) - f(x))^+ + o_p(1) \\ &\leq \bar{h}(b_*, b_o) - \underline{h}(b_*, b_o) + o_p(1), \\ \int_{x_o}^{b_o} |\hat{f}_n(x) - f(x)| dx &\leq \int_{b_*}^{b_o} |\hat{f}_n(x) - f(x)| dx + o_p(1) \\ &\leq (b_o - b_*)\bar{h}(b_*, b_o) + o_p(1). \end{aligned}$$

Since $\underline{h}(b_*, b_o), \bar{h}(b_*, b_o) \rightarrow f(b_o)$ as $b_* \uparrow b_o$, these considerations show that for any fixed $\delta > 0$,

$$\max_{x \in [x_o, b_o]} (\hat{f}_n(x) - f(x))^+ \rightarrow_p 0, \quad \max_{x \in [x_o, b_o - \delta]} |\hat{f}_n(x) - f(x)| \rightarrow_p 0$$

and

$$\int_{x_o}^{b_o} |\hat{f}_n(x) - f(x)| dx \rightarrow_p 0.$$

Suppose that in addition $b_o < b$, so $f \equiv 0$ on (b_o, ∞) . Then for fixed $\delta > 0$,

$$\sup_{x \in (b_o, b_o + \delta]} \hat{f}_n(y) \leq \bar{h}(b_o, b_o + \delta) + o_p(1)$$

with $\bar{h}(b_o, b_o + \delta) = f(b_o) \max\{f(b_o)/f(x_o), 1\}^{\delta/(b_o - x_o)}$, and

$$\hat{\pi}_n := \frac{\hat{P}_n([b_o, b_o + \delta])}{\delta} \rightarrow_p 0.$$

In particular, $\hat{\pi}_n < \hat{f}_n(x_o)$ with asymptotic probability one, and in that case we may conclude from concavity of $\hat{\phi}_n$ that $\hat{f}_n(b_o + \delta) \leq \hat{\pi}_n$ and $\hat{f}_n(b_o + \delta + s) \leq \hat{\pi}_n (\hat{\pi}_n / \hat{f}_n(x_o))^{s/(b_o + \delta - x_o)}$ for any $s > 0$, so

$$\sup_{x \geq b_o + \delta} \hat{f}_n(x) \rightarrow_p 0 \quad \text{and} \quad \int_{b_o + \delta}^{\infty} \hat{f}_n(x) dx \rightarrow_p 0.$$

Moreover,

$$\int_{b_o}^{b_o + \delta} \hat{f}_n(x) dx \leq \delta \bar{h}(b_o, b_o + \delta) + o_p(1).$$

Since $\bar{h}(b_o, b_o + \delta) \rightarrow f(b_o)$ as $\delta \downarrow 0$, we may conclude that even

$$\int_{b_o}^{\infty} \hat{f}_n(x) dx \rightarrow_p 0.$$

Analogous arguments apply to $|\hat{f}_n - f|$ on the interval $[a, x_o] \cap \mathbb{R}$, and this yields the three claims about $\hat{f}_n - f$. Since

$$|\hat{F}_n(x) - F(x)| \leq |\hat{F}_n(x_o) - F(x_o)| + \int_a^b |\hat{f}_n(t) - f(t)| dt$$

for any fixed $x_o \in (a_o, b_o)$ and arbitrary $x \in [a, b] \cap \mathbb{R}$, we also see that the supremum of $|\hat{F}_n - F|$ over $[a, b]$ converges to zero in probability.

It remains to prove the additional claims about \hat{q}_n . If $b = \infty$, then $\hat{q}_n = 1 - \hat{F}_n(\infty -) = 1 - F(\infty -) + o_p(1) = q + o_p(1)$. In case of $b < \infty$ we know that $\hat{F}_n(b) = F(b) + o_p(1)$, so $\hat{q}_n \leq 1 - \hat{F}_n(b) = 1 - F(b) + o_p(1)$. We also know that $\hat{f}_n(b) \leq f(b) + o_p(1)$ and $\hat{f}_n(x_o) \rightarrow_p f(x_o) > 0$ for any fixed $x_o \in (a_o, b_o)$. In case of $\hat{f}_n(x_o) > 0$ it follows from concavity of $\hat{\phi}_n = \log \hat{f}_n$ that $\hat{f}_n(b + s) \leq \hat{f}_n(b) (\hat{f}_n(b) / \hat{f}_n(x_o))^{s/(b - x_o)}$ for $s > 0$, and

$$\hat{q}_n \geq 1 - \hat{F}_n(b) - \hat{\varepsilon}_n(x_o) = 1 - F(b) + o_p(1) - \hat{\varepsilon}_n(x_o)$$

with

$$\hat{\varepsilon}_n(x_o) := \hat{f}_n(b) \int_0^{\infty} (\hat{f}_n(b) / \hat{f}_n(x_o))^{s/(b - x_o)} ds.$$

In case of $f(b) = 0$, one can easily verify that $\hat{\varepsilon}_n(x_o) \rightarrow_p 0$. In case of $f(b) > 0 > \phi'(b -)$, we may choose x_o such that $f(x_o) > f(b)$. For any such x_o ,

$$\hat{\varepsilon}_n(x_o) \rightarrow_p f(b) / \frac{\phi(x_o) - \phi(b)}{b - x_o},$$

and the right hand side converges to $f(b) / |\phi'(b -)|$ as $x_o \uparrow b$. □

Acknowledgement

Constructive comments of the associate editor and three referees are gratefully acknowledged.

References

- [1] DEMPSTER, A. P., LAIRD, N. M. and RUBIN, D. B. (1977). Maximum-likelihood from incomplete data via the EM algorithm (with discussion). *J. Royal Statist. Soc. Ser. B* **39**(1) 1–38. [MR0501537](#)
- [2] DÜMBGEN, L., FREITAG, S. and JONGBLOED, G. (2004). Consistency of concave regression with an application to current-status data. *Math. Meth. Statist.* **13** 69–81. [MR2078313](#)
- [3] DÜMBGEN, L., FREITAG-WOLF, S. and JONGBLOED, G. (2006). Estimating a unimodal distribution from interval-censored data. *J. Amer. Statist. Assoc.* **101** 1094–1106. [MR2324149](#)
- [4] DÜMBGEN, L., HÜSLER, A. and RUFIBACH, K. (2007, revised 2011a). Active set and EM algorithms for log-concave densities based on complete and censored data. Technical report 61, IMSV, University of Bern.
- [5] DÜMBGEN, L. and RUFIBACH, K. (2009). Maximum likelihood estimation of a log-concave density and its distribution function: basic properties and uniform consistency. *Bernoulli* **15**(1) 40–68. [MR2546798](#)
- [6] DÜMBGEN, L., SAMWORTH, R. and SCHUHMACHER, D. (2011). Approximation by log-concave distributions, with applications to regression. *Ann. Statist.* **39**(2) 702–730. [MR2816336](#)
- [7] EDMUNSON, J. H., FLEMING, T. R., DECKER, D. G., MALKASIAN, G. D., JEFFERIES, J. A., WEBB, M. J. and KVOLS, L. K. (1979). Different chemotherapeutic sensitivities and host factors affecting prognosis in advanced ovarian carcinoma vs. minimal residual disease. *Cancer Treatment Reports* **63** 241–247.
- [8] FAY, M. P. (2013). *Interval: Weighted Logrank Tests and NPMLE for Interval Censored Data*. R package, available at <http://cran.r-project.org/web/packages/interval/>.
- [9] R CORE TEAM (2013). *R: A Language and Environment for Statistical Computing*. R Foundation for Statistical Computing, Vienna, Austria. Available at <http://www.r-project.org/>.
- [10] SCHUHMACHER, D., HÜSLER, A. and DÜMBGEN, L. (2011). Multivariate log-concave distributions as a nearly parametric model. *Statist. Risk Modeling* **28**(3) 277–295. [MR2838319](#)
- [11] SCHUHMACHER, D., RUFIBACH, K. and DÜMBGEN, L. (2013). *Logconcens: Maximum Likelihood Estimation of a Log-Concave Density Based on Censored Data*. R package, available at <http://cran.r-project.org/web/packages/logconcens/>.
- [12] SILVERMAN, B. W. (1982). On the estimation of a probability density function by the maximum penalized likelihood method. *Ann. Statist.* **10**(3) 795–810. [MR0663433](#)

- [13] THERNEAU, T. (2013). *Survival: Survival Analysis*. R package, available at <http://cran.r-project.org/web/packages/survival/>.
- [14] TURNBULL, B. W. (1976). The empirical distribution function with arbitrarily grouped, censored and truncated data. *J. Roy. Statist. Soc. Ser. B* **38**(3) 290–295. [MR0652727](#)
- [15] WALTHER, G. (2009). Inference and modeling with log-concave distributions. *Statist. Sci.* **24**(3) 319–327. [MR2757433](#)