

Klimawandel, Umwelt und Nahrung für alle

Hans Hurni
mit Unterstützung von
Andreas Heinemann und Rosmarie Sommer

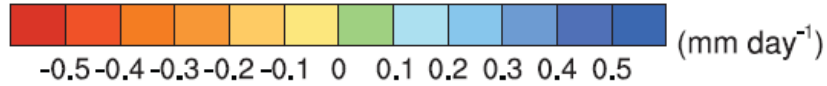
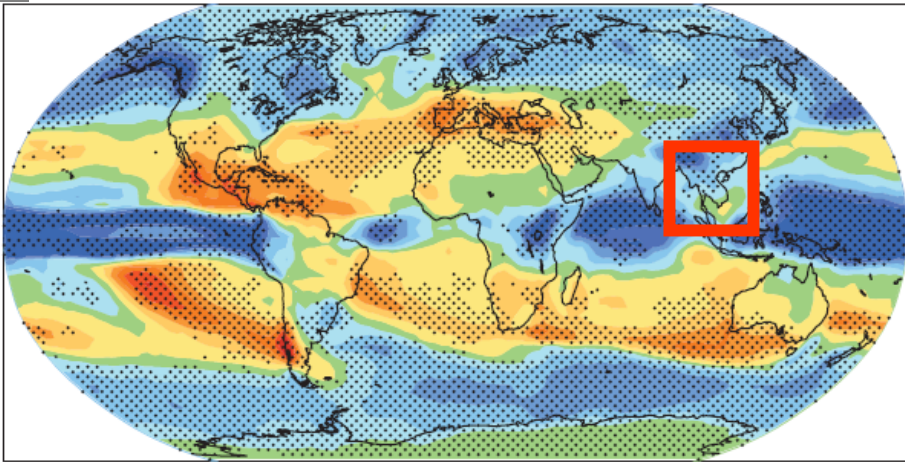
Nationaler Forschungsschwerpunkt Nord-Süd
Zentrum für Entwicklung und Umwelt
Geographisches Institut
Universität Bern



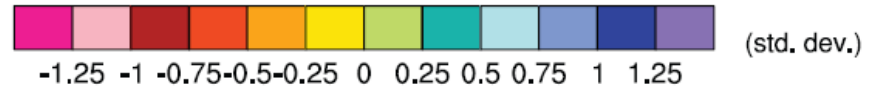
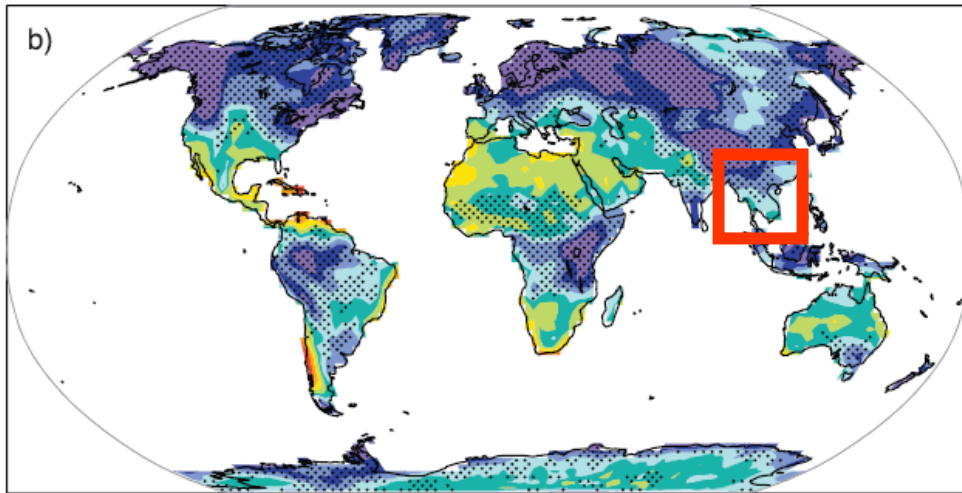




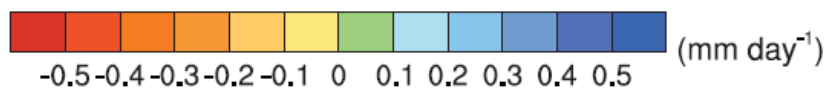
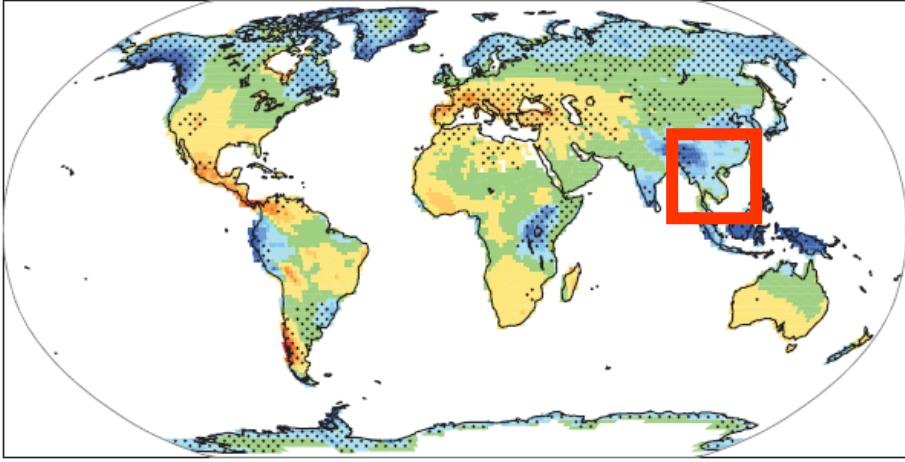
a) Precipitation



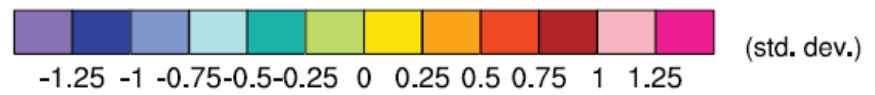
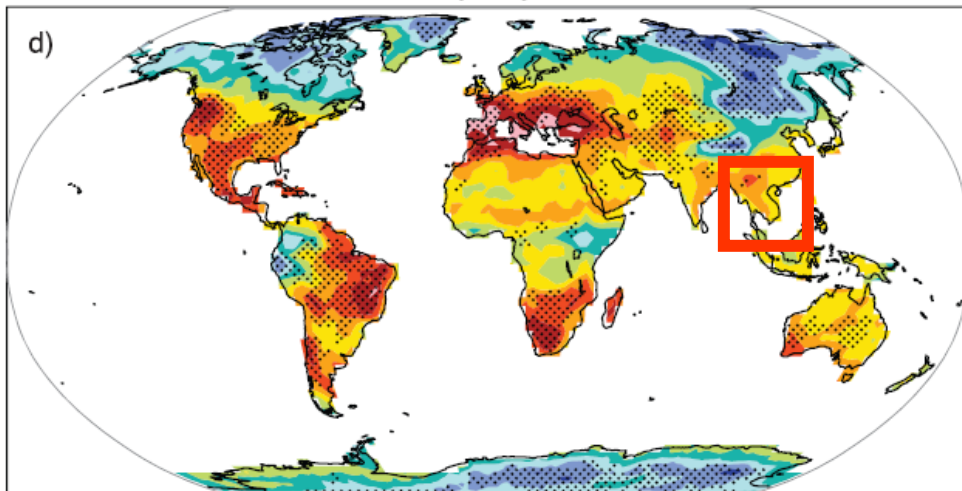
Precipitation intensity



c) Runoff



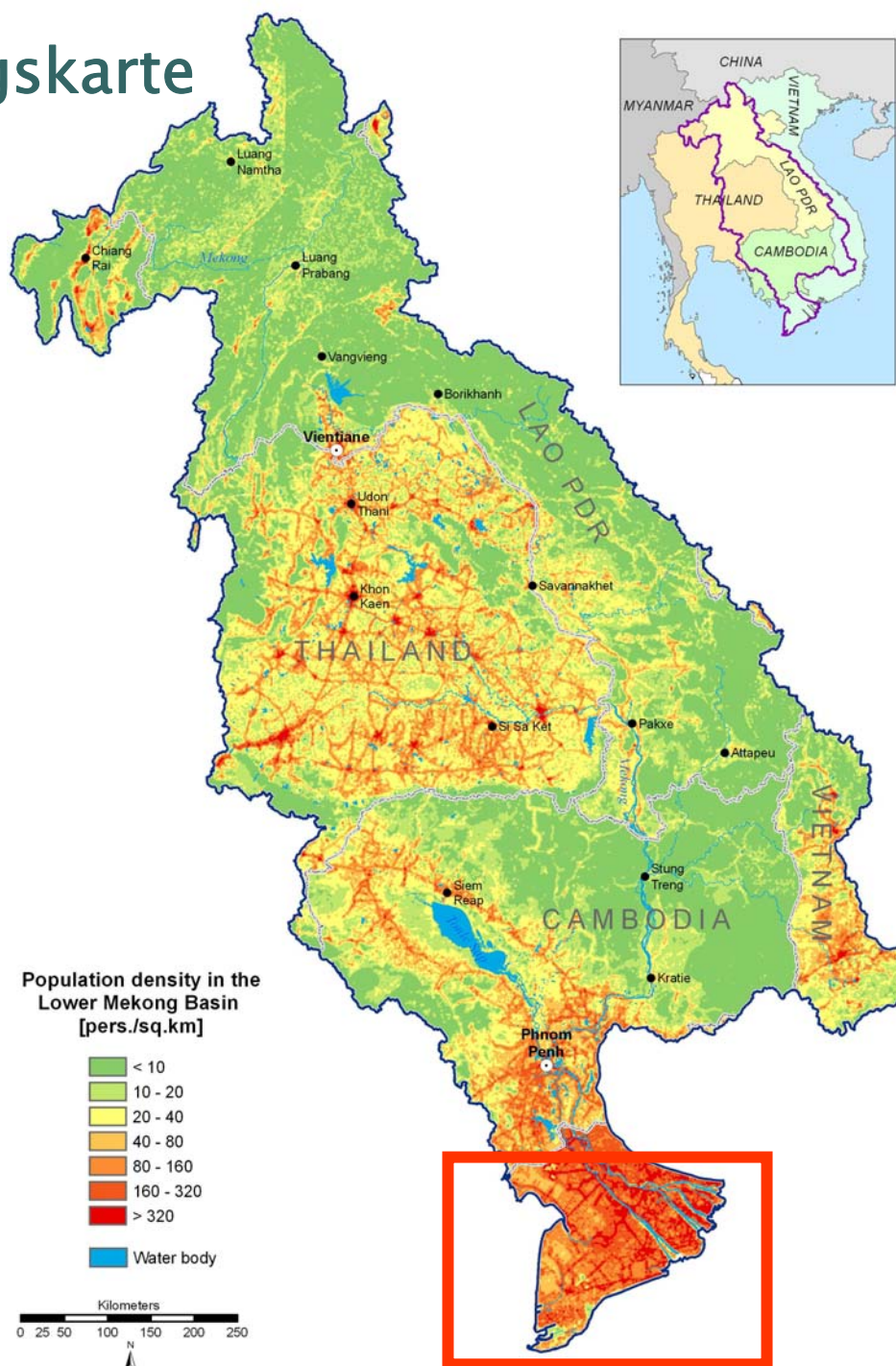
Dry days





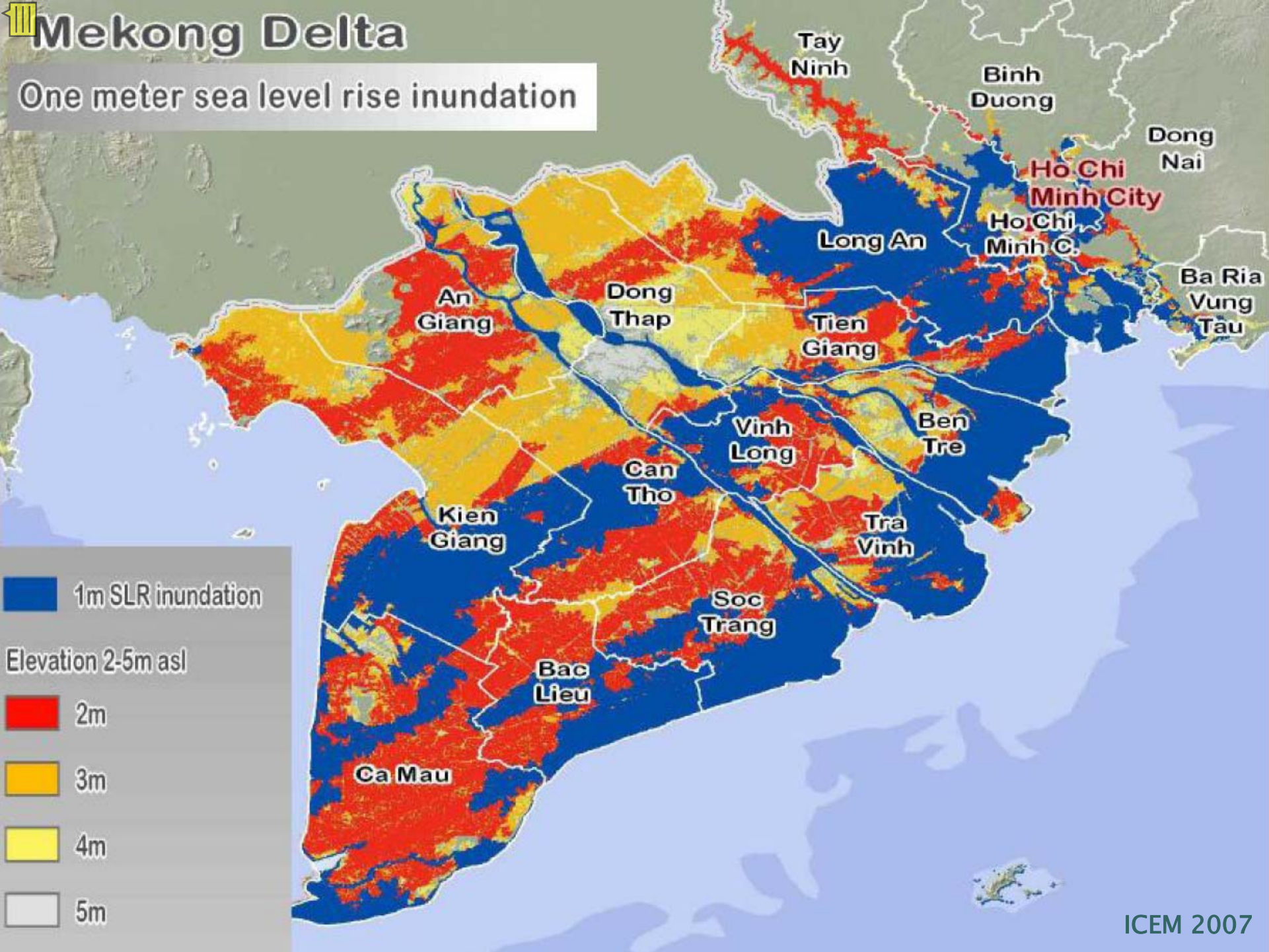
(anon)

Bevölkerungskarte des unteren Mekong- Beckens



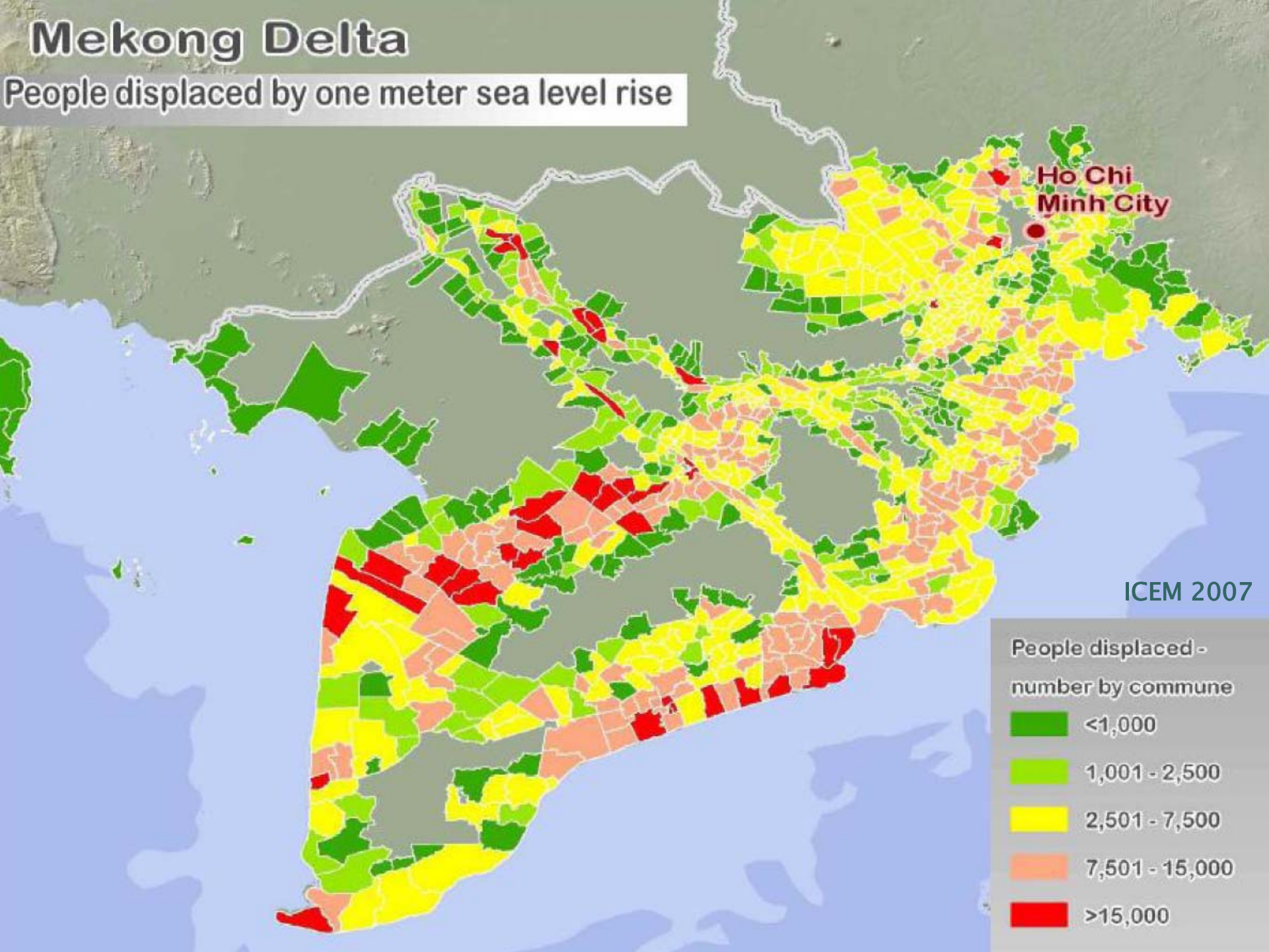
Mekong Delta

One meter sea level rise inundation



Mekong Delta

People displaced by one meter sea level rise



ICEM 2007

People displaced -
number by commune

- Dark Green: <1,000
- Light Green: 1,001 - 2,500
- Yellow: 2,501 - 7,500
- Orange: 7,501 - 15,000
- Red: >15,000

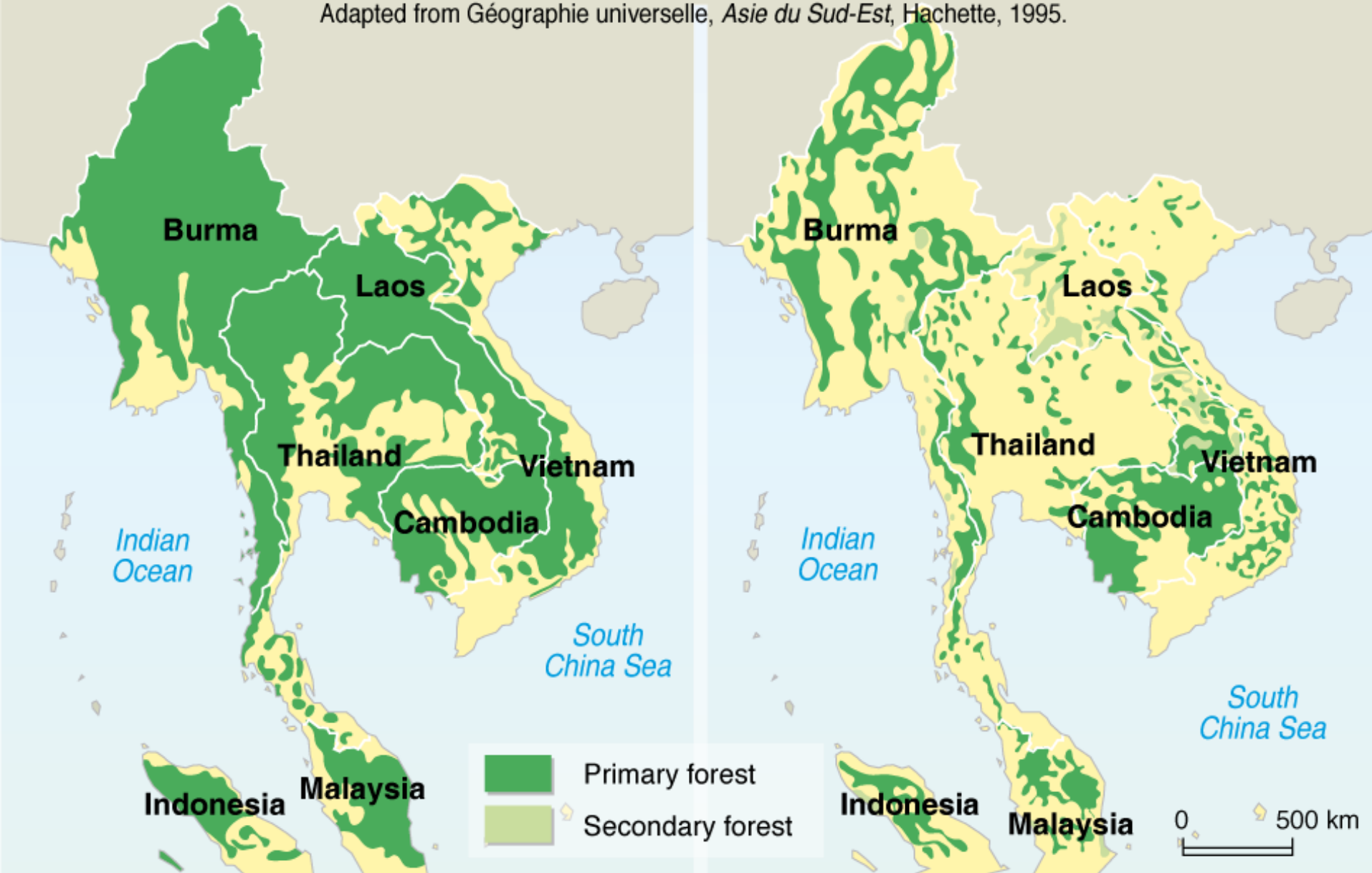


1970

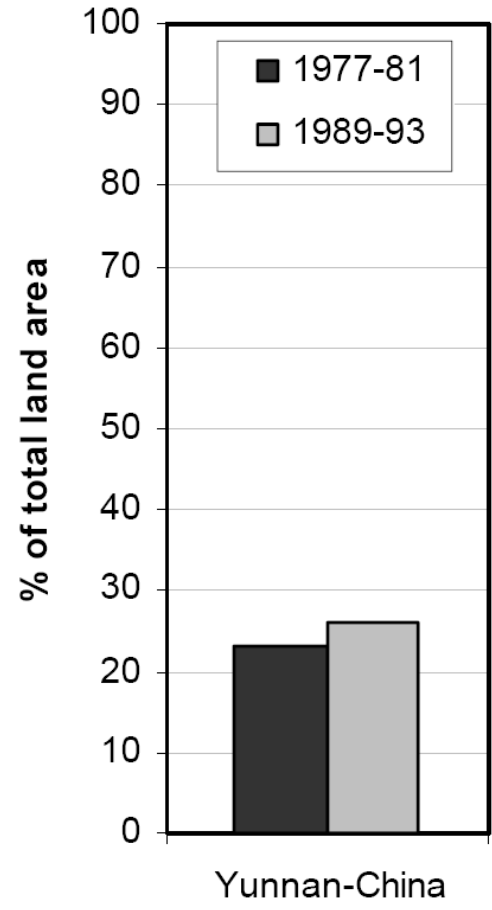
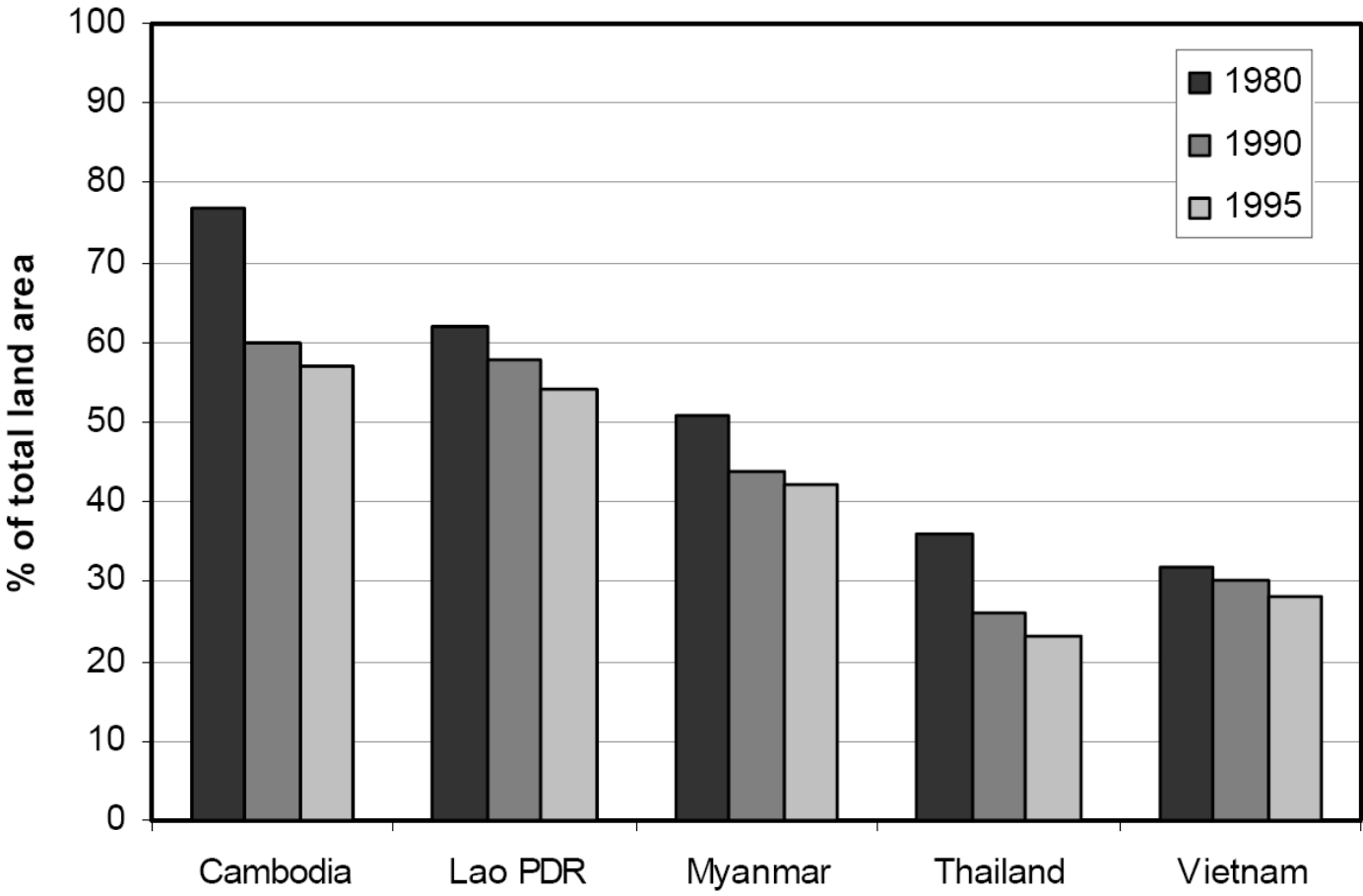
DISAPPEARING FORESTS

1990

Adapted from *Géographie universelle, Asie du Sud-Est*, Hachette, 1995.



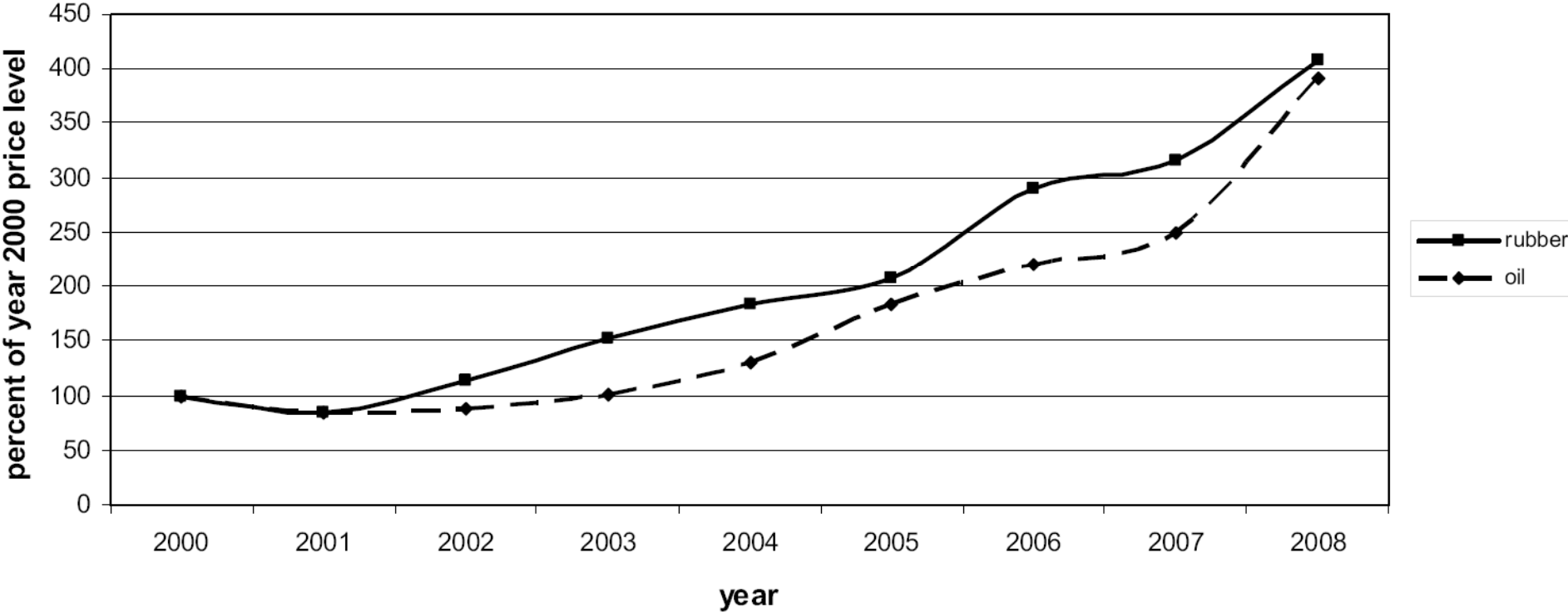
Waldfläche pro Land in Südostasien 1980–1995





Vergleich von Kautschuk- und Ölpreis 2000–2008

Comparison of rubber and oil prices (percent of year 2000 price level)





23.80° O Höhe 626 m

Image © 2008 DigitalGlobe
© 2008 Europa Technologies

Übertragung 100%

© 2007 Google™

Sichthöhe 2.51 km



John Jantak

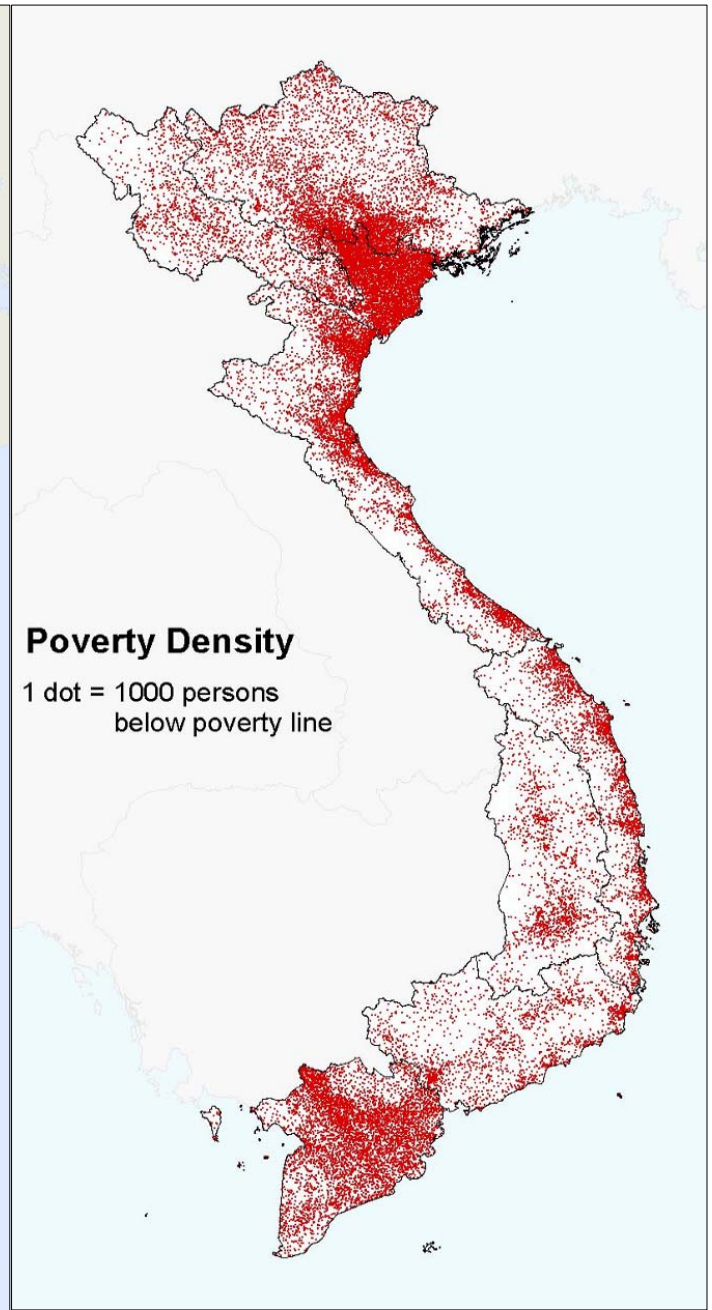
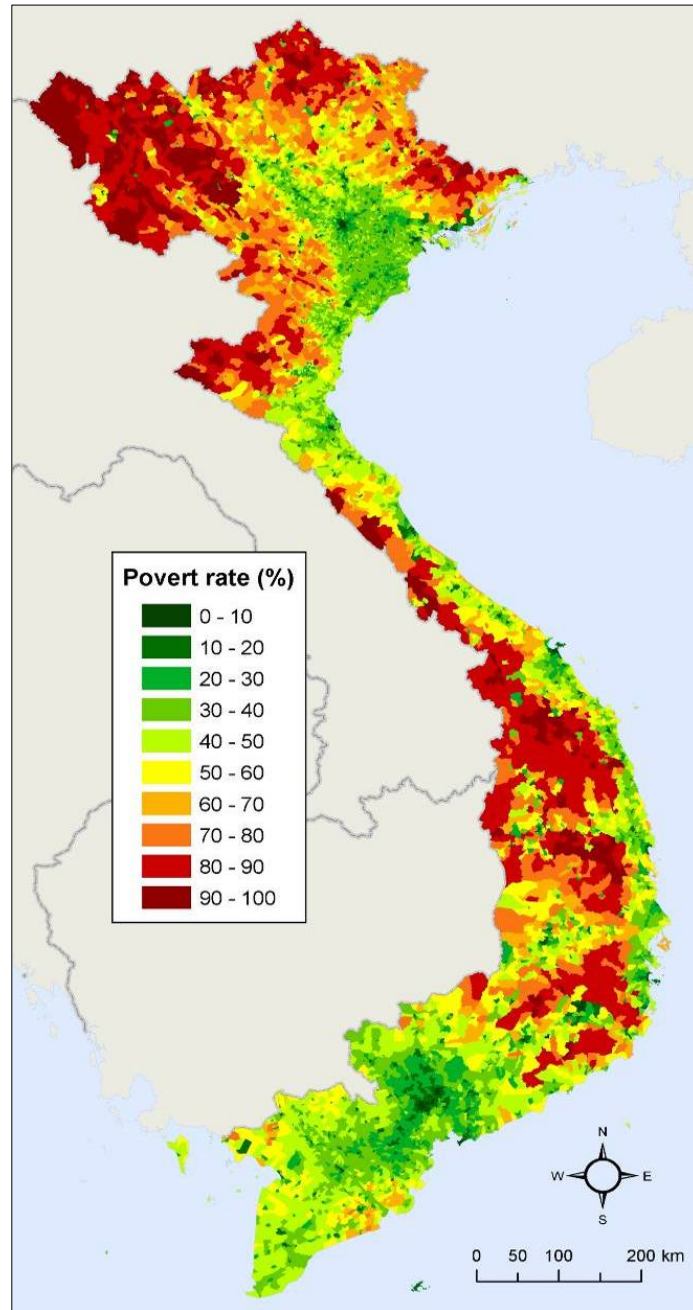


IRRI



Peter Messerli

Armut: Rate und Dichte in Vietnam





Nationaler Forschungsschwerpunkt NCCR North-South

www.nccr-north-south.unibe.ch

Zentrum für Entwicklung und Umwelt

www.cde.unibe.ch

Geographisches Institut

Universität Bern