

RESEARCH ARTICLE

Progression of Liver Fibrosis in HIV/HCV Co-Infection: A Comparison between Non-Invasive Assessment Methods and Liver Biopsy

Patrick Schmid^{1*}, Andrea Bregenzer¹, Milo Huber², Andri Rauch³, Wolfram Jochum⁴, Beat Müllhaupt⁵, Pietro Vernazza¹, Milos Opravil^{2a}, Rainer Weber², Swiss HIV Cohort Study¹

1 Division of Infectious Diseases and Hospital Epidemiology, Cantonal Hospital St. Gallen, St. Gallen, Switzerland, **2** Division of Infectious Diseases and Hospital Epidemiology, University Hospital Zurich, University of Zurich, Zurich, Switzerland, **3** Division of Infectious Diseases and Hospital Epidemiology, University Hospital Berne, Berne, Switzerland, **4** Institute of Pathology, Cantonal Hospital St. Gallen, St. Gallen, Switzerland, **5** Division of Hepatology, University Hospital Zurich, Zurich, Switzerland

^a Current address: Stiglenstr. 12, Zürich, Switzerland

¹ Membership of the Swiss HIV Cohort Study (SHCS) is provided in the Acknowledgments.

* Patrick.Schmid@kssg.ch



OPEN ACCESS

Citation: Schmid P, Bregenzer A, Huber M, Rauch A, Jochum W, Müllhaupt B, et al. (2015) Progression of Liver Fibrosis in HIV/HCV Co-Infection: A Comparison between Non-Invasive Assessment Methods and Liver Biopsy. PLoS ONE 10(9): e0138838. doi:10.1371/journal.pone.0138838

Editor: Ratna B. Ray, SAINT LOUIS UNIVERSITY, UNITED STATES

Received: July 8, 2015

Accepted: September 3, 2015

Published: September 29, 2015

Copyright: © 2015 Schmid et al. This is an open access article distributed under the terms of the [Creative Commons Attribution License](https://creativecommons.org/licenses/by/4.0/), which permits unrestricted use, distribution, and reproduction in any medium, provided the original author and source are credited.

Data Availability Statement: All relevant data are available in the paper and its Supporting Information files.

Funding: This study has been financed within the framework of the Swiss HIV Cohort Study, supported by the Swiss National Science Foundation (grant #148522), by SHCS project #474 and by the SHCS research foundation. The data are gathered by the Five Swiss University Hospitals, two Cantonal Hospitals, 15 affiliated hospitals and 36 private physicians (listed in <http://www.shcs.ch/180-health-care-providers>). The study was supported by an

Abstract

Objectives

To evaluate the diagnostic performance of seven non-invasive tests (NITs) of liver fibrosis and to assess fibrosis progression over time in HIV/HCV co-infected patients.

Methods

Transient elastography (TE) and six blood tests were compared to histopathological fibrosis stage (METAVIR). Participants were followed over three years with NITs at yearly intervals.

Results

Area under the receiver operating characteristic curve (AUROC) for significant fibrosis (> = F2) in 105 participants was highest for TE (0.85), followed by FIB-4 (0.77), ELF-Test (0.77), APRI (0.76), Fibrotest (0.75), hyaluronic acid (0.70), and Hepascore (0.68). AUROC for cirrhosis (F4) was 0.97 for TE followed by FIB-4 (0.91), APRI (0.89), Fibrotest (0.84), Hepascore (0.82), ELF-Test (0.82), and hyaluronic acid (0.79). A three year follow-up was completed by 87 participants, all on antiretroviral therapy and in 20 patients who completed HCV treatment (9 with sustained virologic response). TE, APRI and Fibrotest did not significantly change during follow-up. There was weak evidence for an increase of FIB-4 (mean increase: 0.22, p = 0.07). 42 participants had a second liver biopsy: Among 38 participants with F0-F3 at baseline, 10 were progressors (1-stage increase in fibrosis, 8 participants; 2-stage, 1; 3-stage, 1). Among progressors, mean increase in TE was 3.35 kPa, in APRI 0.36, and in FIB-4 0.75. Fibrotest results did not change over 3 years.

unrestricted grant from Schering-Plough. Biopredictive offered a 50% discount for Fibrotest calculations. ELF-test was financed by Siemens. The funders had no role in study design, data collection and analysis, decision to publish, or preparation of the manuscript.

Competing Interests: The authors have declared that no competing interests exist.

Conclusion

TE was the best NIT for liver fibrosis staging in HIV/HCV co-infected patients. APRI-Score, FIB-4 Index, Fibrotest, and ELF-Test were less reliable. Routinely available APRI and FIB-4 performed as good as more expensive tests. NITs did not change significantly during a follow-up of three years, suggesting slow liver disease progression in a majority of HIV/HCV co-infected persons on antiretroviral therapy.

Background

HIV co-infection accelerated progression of liver fibrosis in hepatitis C virus (HCV)-infected patients before potent antiretroviral therapy (ART) became available [1]. Whether HIV infection is still a relevant risk factor for liver disease progression under suppressive ART is controversial [2–5]. Reliable staging of liver fibrosis is essential for clinical decision making. Liver biopsy has been traditionally considered as gold standard to evaluate liver fibrosis. However, this procedure has several drawbacks such as pain and bleeding complications, and it can also lead to inaccurate staging due to sampling error and variability in the interpretation of biopsies. In the last decade various non-invasive tests (NITs) have been introduced to stage liver fibrosis of which measurement of liver stiffness by transient elastography (TE) using FibroScan[®] is the most widely accepted method. This device-dependent technique is mainly limited to larger centres, and sometimes it cannot be applied in obese patients or persons with narrow intercostal spaces. Blood serum markers—singly or in combination—are alternative non-invasive tests that allow a more widespread use and are cheaper. Serum markers as routine biochemical parameters (indirect markers) and markers of hepatic matrix metabolism (direct markers) have been evaluated mainly in HCV-mono-infected patients [6,7]. Fibrotest[®], a panel of 5 serum values, is the best validated marker. In HIV/HCV co-infected patients head-to-head comparison of NITs is still limited [8,9].

Until recently, HCV-treatment was associated with poor rates of sustained virological response (SVR), especially in patients with HCV/HIV co-infection. Improved treatments with cure rates >90% are now available in some countries. Because of the high costs of these new HCV drugs, access to treatment is limited to patients with severe fibrosis or cirrhosis in most countries. Therefore, assessment of liver-fibrosis as a key parameter to estimate prognosis will still be required for the indication of antiviral treatment in the coming years.

The aim of this study was to compare the diagnostic accuracy of liver fibrosis staging by TE and six serum biochemical markers in HIV-HCV-co-infected patients. Furthermore, situations in which liver biopsies might safely be replaced by non-invasive tests should be determined. Another goal was to assess changes in liver fibrosis over time. When the study was planned, European guidelines recommended repeated liver biopsies every 3 to 5 years in HIV/HCV co-infected patients without treatment-induced sustained response. Therefore the cohort was longitudinally followed over 3 years.

Methods

Ethics Committee of St. Gallen, Zurich and Bern have approved this study. All participants have signed an informed consent.

Study Population

This study was conducted as a nested project of the Swiss HIV Cohort Study (SHCS; www.shcs.ch). HIV positive participants with chronic HCV infection (detectable HCV-RNA by PCR for at least six months) were included, if they agreed with a liver biopsy. The sample size of 100 patients was calculated to determine the different receiver operating characteristic (ROC) curves (as shown in [10] on 130 patients). The computation of the sample size targeted primarily to achieve a good sensitivity for the diagnosis of severe fibrosis. According to the values given by Castera et al. [11], the sensitivity was 73% to diagnose a METAVIR fibrosis stage ≥ 3 . To achieve a 95% confidence interval of 63 to 83% for the true sensitivity of 73%, the necessary number of patients was 76 [12]; Java Applets for Power and Sample Size, <http://www.stat.uiowa.edu/~rlenth/Power>. The targeted number of 100 recruited patients included a compensation for missing data or withdrawals.

Clinical Assessment

All patients had semi-annual study visits as previously described [13]. Reasons for death or drop out were recorded. Liver related morbidities were evaluated with a case-report form.

Histopathological assessment of liver biopsies (LB)

LB was performed at baseline and three years later. Sections stained with haematoxylin and eosin or CAB were used for histopathologic evaluation using the degree of inflammation, steatosis, and fibrosis as morphological endpoints. Inflammation and fibrosis were scored according to the METAVIR system [14]. The percentage of hepatocytes with fat droplets was estimated to evaluate the degree of liver steatosis. All histopathologic assessments were performed centrally by an experienced pathologist (WJ) who was not aware of the results of the non-invasive liver fibrosis tests and the clinical course of the patients.

Non-invasive assessment of liver fibrosis

Transient elastography (TE). TE is a painless, ultrasound-based method to measure the mean stiffness of hepatic tissue. For TE, the FibroScan[®] instrument (Echosens, Paris, France) was used [15]. TE was performed at baseline and yearly intervals.

Blood-based assessment of liver fibrosis. Blood samples were obtained at baseline and longitudinally at yearly intervals. Blood was collected in serum separator tubes, centrifuged at 3000 rpm for 10 min, and plasma stored at -80°C. From baseline-samples six non-invasive markers of liver fibrosis were determined. An overview of the components of the different blood markers is given in [Table 1]. Standard cut-offs in the literature are summarized in [Table 2].

APRI-Score. APRI is score derived from routine blood markers which is calculated based on the formula proposed by Wai et al. [16]: $[(AST/ULN \text{ (upper limit of normal) of AST}) \times 100] / \text{platelets} (10^9/L)$. AST = aspartate aminotransferase.

FIB-4 Index. FIB-4 was determined using the formula proposed by Sterling et al. [17]: $(\text{age} \times ASAT) / (\text{platelets} (10^9/L) \times ALT^{1/2})$. ALT = alanine aminotransferase.

Fibrotest[®]. Fibrotest is a composite marker, calculated from $\alpha 2$ -macroglobulin, haptoglobin, apolipoprotein A, GGT and total bilirubin [18]. The algorithm of Fibrotest[®] is under patent and the calculation was done by Biopredictive[®] (Paris, France). GGT = gamma-glutamyltransferase.

Table 1. Blood markers for non-invasive diagnosis of liver fibrosis.

TEST	DESCRIPTION
Indirect markers	
APRI	AST, platelets
FIB-4	AST, ALT, platelets, age
Fibrotest	alpha-2-macroglobulin, haptoglobin, apolipoprotein A1, GGT, total bilirubin
Direct markers (hepatic matrix metabolism)	
HYA	hyaluronic acid
Hepascore	alpha-2-macroglobulin, hyaluronic acid, GGT, total bilirubin, age, sex
ELF	hyaluronic acid, type III procollagen, TIMP1, age

doi:10.1371/journal.pone.0138838.t001

Hyaluronic acid. Hyaluronic acid levels were measured using a commercially available enzyme-linked binding protein assay, HA test kit (Corgenix, Colorado, USA), according to the manufacturer’s protocol.

Hepascore. Hepascore is a composite marker, calculated from α -2 macroglobulin, hyaluronic acid, GGT and total bilirubin. Hepascore was calculated using the formula proposed by Adams et al. [19]: $y = \exp [-4.185818 - (0.0249 \times \text{age}) + (0.7464 \times \text{sex}) + (1.0039 \times \alpha 2\text{-macroglobulin}) + (0.0302 \times \text{hyaluronic acid}) + (0.0691 \times \text{bilirubin}) - (0.0012 \times \text{GGT})]$

Enhanced Liver Fibrosis (ELF[®])-Test. ELF-Test is a composite marker of extracellular matrix components (hyaluronic acid, PIIINP and TIMP-1) [20] merchandised by Siemens Medical Solutions Diagnostics[®] (Tarrytown, USA).

Data Analyses

Baseline evaluation. The diagnostic accuracy of the non-invasive tests was compared to histopathological staging (liver biopsy = gold standard) by ROC analysis. ROC (x-axis: 1-specificity, y-axis: sensitivity) were calculated for significant fibrosis (> = F2-METAVIR stage) and cirrhosis (F4). The diagnostic accuracy was defined by the area under the ROC-curve (AUROC). Sensitivity (proportion of true positives, correctly identified by the new test), specificity (proportion of true negatives correctly identified by the new test), positive predictive value (PPV) (proportion of individuals with a positive test who actually have the disease) and negative predictive value (NPV) (proportion of individuals with a negative test who actually do not have the disease) were determined for various cut-off points. Optimal cut-off values for each test were established where the sum of sensitivity and specificity was maximal.

Longitudinal follow-up. All participants with a complete follow-up of 3 years were analysed. A paired t-test (comparing the population mean difference with zero) was used to

Table 2. Standard cut-off values of non-invasive tests of liver fibrosis in the literature.

TEST	Absence of significant fibrosis	Presence of significant fibrosis	Absence of cirrhosis	Presence of cirrhosis	Ref.
TE (kPa)	<7.0	> = 7.0	< 10.0	> = 12.5	[22,29]
APRI	< 0.5	> = 1.5	< 1.0	> = 2.0	[16,29,8]
FIB-4	n.a.	n.a.	< 1.45 (<F3)	> = 3.25 (> = F3)	[17]
Fibrotest	< 0.32	> 0.48	< 0.59	> = 0.75	[29,8]
Hyaluronic acid (μ g/l)	<16	>121	< 50–60	> 110–237	[34–36]
Hepascore	< 0.5	> = 0.5–0.55	< 0.84	> = 0.84	[19,8,37]
ELF	< 7.7	> = 9.8	< 11.3	> = 11.3	[26]

doi:10.1371/journal.pone.0138838.t002

determine whether there was a significant change in TE, APRI, FIB-4 or Fibrotest between baseline and 3year follow-up. The subgroup of participants with paired liver biopsies was divided into “progressors” (increase of at least one METAVIR-stage between the two biopsies) and “non-progressors” (no change or decrease in fibrosis stage). Mean changes of non-invasive tests were compared between progressors and non-progressors by t-test, and predictors of fibrosis progression were analysed by logistic regression.

Statistical calculations were performed with Stata, Version 12.0 (Stata Corporation).

Results

Baseline parameters of study participants

105 HIV/HCV co-infected participants (81 male, 24 female) were enrolled (05/2006 to 12/2010). HCV-genotype (GT) distribution was: GT 1, 56 participants; GT 2, 4; GT 3, 23; GT 4, 21; and GT 1/4, 1. Mean age was 43 years, mean CD4-count 474/ μ l (7 patients <200/ μ l). 86 patients (82%) were on ART at baseline. 21 had an Atazanavir-based ART, which can cause elevated total bilirubin. 24 patients had low platelet counts, 5 of them <100 G/l. Seven patients with thrombocytopenia were not on ART.

Assessment of liver-fibrosis at baseline

Histopathological quantification of liver fibrosis (n = 105). A standard number of biopsy-passes was not foreseen in the protocol. Three in four of biopsies fulfilled the quality criteria proposed by Colloredo et al. [21], including liver specimens greater than 20 mm in length and more than 11 portal tracts). No or mild fibrosis (METAVIR stage F0 or F1) was observed in 67 patients (64%). 20 patients had moderate (F2), 4 patients severe fibrosis (F3), and 14 patients had cirrhosis (F4). Thus, \geq F2-prevalence was 36%, and F4-prevalence 13%. Inflammatory activity was absent or mild (METAVIR grade A0 or A1) in 98 patients, moderate (A2) in 6, and severe (A3) in one patient. Hepatic steatosis was observed in 54 patients (19 patients with steatosis of >30% of hepatocytes).

Non-invasive tests. Since only 4/105 (4%) patients had severe fibrosis (F3) at baseline, we restricted our validation of the NITs to the detection of significant fibrosis (\geq F2) and cirrhosis (F4).

Comparison of the different NITs for the diagnosis of significant fibrosis (F \geq 2) and cirrhosis (F4) is summarized in Tables 3 and 4 including sensitivity and specificity for standard cut-off values as well as for the optimized method defined above (maximized sensitivity+specificity). The respective ROC curves with the AUROC values are shown in Figs 1–4.

TE (n = 99). 58 patients had TE <7.0 kPa, 15 patients 7.0 to 9.4 kPa, 8 patients 9.5 to 12.4 kPa and 18 patients \geq 12.5 kPa [11,22]. TE provided an AUROC value for significant fibrosis (\geq F2) of 0.85 (95% CI 0.78–0.93) and for cirrhosis (F4) of 0.97 (0.94–1.0). Optimal cut-off value for \geq F2 was \geq 7.2 kPa and for F4 10.4 kPa.

APRI-Score (n = 104). AUROC for \geq F2 was 0.76 (95% CI 0.66–0.86), for F4 0.89 (0.82–0.96). Optimal cut-off value was \geq 1.1, both for \geq F2 and F4. At a standard cut-off for F4 of >2.0 [23,24] 85.6% of patients were correctly classified (sensitivity 42.9%, specificity 92.2%).

FIB-4 Index (n = 103). AUROC for \geq F2 was 0.77 (95% CI 0.68–0.87), for F4 0.91 (0.84–0.97). Optimal cut off-value for F4 was \geq 1.94. (no optimal cut off-value for \geq F2, flat curve of sum of sensitivity plus specificity). At a standard cut-off for cirrhosis (\geq F3) of \geq 3.25 [25], 88.3% of patients were correctly classified (sensitivity 57.1%, specificity 93.3%).

Fibrotest[®] (n = 101). AUROC for \geq F2 was 0.75 (95% CI 0.65–0.85), for F4 0.84 (0.75–0.92). Optimal cut off-value for \geq F2 was \geq 0.6, for F4 \geq 0.77. At a standard cut-off for

Table 3. Performance of non-invasive tests for diagnosis of significant fibrosis (> = F2).

TEST	n	≥F2 prevalence in biopsy (%)	Cut-off Value	Cut-off Basis	Sens (%)	Spec (%)	PPV (%)	NPV (%)	Sens +Spec (%)	Correctly classified (%)
TE	99	37.4 (37/99)	≥7.2 kPa	Sens + Spec = Max	75.7 (28/37)	82.3 (51/62)	71.8 (28/39)	85.0 (51/60)	158.0	79.8 (79/99)
			≥7.0 kPa	Standard [22]	75.7 (28/37)	79.0 (49/62)	68.3 (28/41)	84.5 (49/58)	154.7	77.8 (77/99)
APRI	104	36.5 (38/104)	≥1.1	Sens + Spec = Max	55.3 (21/38)	87.9 (58/66)	72.4 (21/29)	77.3 (58/75)	143.2	76.0 (79/104)
			≥0.5	Standard [16,29,8]	78.9 (30/38)	48.5 (32/66)	46.9 (30/64)	80.0 (32/40)	127.4	59.6 (62/104)
			>1.5	Standard [16,29,8]	36.8 (14/38)	92.4 (61/66)	73.7 (14/19)	71.8 (61/85)	129.2	72.1 (75/104)
FIB-4	103	35.9 (37/103)	≥2.63 (?)	Sens + Spec = Max	51.4 (19/37)	92.4 (61/66)	79.2 (19/24)	77.2 (61/79)	143.8	77.7 (80/103)
			≥1.45 (<F3)	Standard [17]	73.0 (27/37)	59.1 (39/66)	50.0 (27/54)	79.6 (39/49)	132.1	64.1 (66/103)
Fibro-test	101	36.6 (37/101)	≥0.60	Sens + Spec = Max	75.7 (28/37)	64.1 (41/64)	54.9 (28/51)	82.0 (41/50)	139.8	68.3 (69/101)
			>0.1	Standard [29,8]	100 (37/37)	3.1 (2/64)	37.4 (37/99)	100 (2/2)	103.1	38.6 (39/101)
			≥0.32	Standard [29,8]	94.6 (35/37)	28.1 (18/64)	43.2 (35/81)	90.0 (18/20)	122.7	52.5 (53/101)
			>0.48	Standard [29,8]	86.5 (32/37)	48.4 (31/64)	49.2 (32/65)	86.1 (31/36)	134.9	62.4 (63/101)
Hya	102	35.3 (36/102)	≥60.1	Sens + Spec = Max	52.8 (19/36)	81.8 (54/66)	61.3 (19/31)	76.1 (54/71)	134.6	71.6 (73/102)
			≥16	Standard [36]	100 (36/36)	4.5 (3/66)	36.4 (36/99)	100 (3/3)	104.5	38.2 (39/102)
			≥59.5	Standard [34]	52.8 (19/36)	81.8 (54/66)	61.3 (19/31)	76.1 (54/71)	134.6	71.6 (73/102)
			>121	Standard [36]	27.8 (10/36)	98.5 (65/66)	90.9 (10/11)	71.4 (65/91)	126.3	73.5 (75/102)
Hepa-score	102	35.3 (36/102)	≥0.977 (?)	Sens + Spec = Max	38.9 (14/36)	93.9 (62/66)	77.8 (14/18)	73.8 (62/84)	132.8	74.5 (76/102)
			≥0.5	Standard [19,8]	75.0 (27/36)	43.9 (29/66)	42.2 (27/64)	76.3 (29/38)	118.9	54.9 (56/102)
			≥0.55	Standard [37]	69.4 (25/36)	48.5 (32/66)	42.4 (25/59)	74.4 (32/43)	117.9	55.9 (57/102)
ELF	102	34.3 (35/102)	≥9.0	Sens + Spec = Max	77.1 (27/35)	68.7 (46/67)	56.3 (27/48)	85.2 (46/54)	145.8	71.6 (73/102)
			≥7.7	Standard [26]	100 (35/35)	19.4 (13/67)	39.3 (35/89)	100 (13/13)	119.4	47.1 (48/102)
			≥9.8	Standard [26]	40.0 (14/35)	92.5 (62/67)	73.7 (14/19)	74.7 (62/83)	132.5	74.5 (76/102)

TE: transient elastography; Hya: hyaluronic acid, ELF: Enhanced Liver Fibrosis-Test; Sens: sensitivity, Spec: specificity, PPV: positive predictive value, NPV: negative predictive value; (?): flat curve of sum of sensitivity plus specificity.

doi:10.1371/journal.pone.0138838.t003

F4 of > = 0.75 [18] 74.3% of patients were correctly classified (sensitivity 85.7%, specificity 72.4%).

Hyaluronic acid (n = 102). AUROC for > = F2 was 0.70 (95% CI 0.60–0.81), for F4 0.79 (0.63–0.94). Optimal cut off-value for > = F2 was > = 60.1 µg/ml, for F4 > = 76.7 µg/ml.

Table 4. Performance of non-invasive tests for diagnosis cirrhosis (F4).

Test	n	F4 prevalence in biopsy (%)	Cut-off Value	Cut off Basis	Sens (%)	Spec (%)	PPV (%)	NPV (%)	Sens +Spec (%)	Correctly classified (%)
TE	99	14.1 (14/99)	≥10.4 kPa	Sens + Spec = Max	100 (14/14)	89.4 (76/85)	60.9 (14/23)	100 (76/76)	189.4	90.9 (90/99)
			≥10.0 kPa	Standard [22,29]	100 (14/14)	85.9 (73/85)	53.8 (14/26)	100 (73/73)	185.9	87.9 (87/99)
			≥12.5	Standard [22,29]	85.7 (12/14)	92.9 (79/85)	66.7 (12/18)	97.5 (79/81)	178.6	91.9 (91/99)
APRI	104	13.5 (14/104)	≥1.1	Sens + Spec = Max	92.9 (13/14)	82.2 (74/90)	44.8 (13/29)	98.7 (74/75)	175.1	83.7 (87/104)
			≥1.0	Standard [16,29,8]	92.9 (13/14)	78.9 (71/90)	40.6 (13/32)	98.6 (71/72)	171.8	80.8 (84/104)
			>2.0	Standard [16,29,8]	42.9 (6/14)	92.2 (83/90)	46.2 (6/13)	91.2 (83/91)	135.1	85.6 (89/104)
			≥2.7 or ≥2.5	Correctly class. = Max	28.6 (4/14)	98.9 (89/90)	80 (4/5)	89.9 (89/99)	127.5	89.4 (93/104)
FIB-4	103	13.6 (14/103)	≥1.94	Sens + Spec = Max	100 (14/14)	74.2 (66/89)	37.8 (14/37)	100 (66/66)	174.2	77.7 (80/103)
			≥1.45 (<F3)	Standard [17]	100 (14/14)	55.1 (49/89)	25.9 (14/54)	100 (49/49)	155.1	61.2 (63/103)
			>3.25(> = F3)	Standard [17]	57.1 (8/14)	93.3 (83/89)	57.1 (8/14)	93.3 (83/89)	150.4	88.3 (91/103)
Fibro-test	101	13.9 (14/101)	≥0.77	Sens + Spec = Max	85.7 (12/14)	75.9 (66/87)	36.4 (12/33)	97.1 (66/68)	161.6	77.2 (78/101)
			≥0.59	Standard [29,8]	100 (14/14)	55.2 (48/87)	26.4 (14/53)	100 (48/48)	155.2	61.4 (62/101)
			≥0.75	Standard [29,8]	85.7 (12/14)	72.4 (63/87)	33.3 (12/36)	96.9 (63/65)	158.1	74.3 (75/101)
Hya	102	13.7 (14/102)	≥76	Sens + Spec = Max	64.3 (9/14)	87.5 (77/88)	45.0 (9/20)	93.9 (77/82)	151.8	84.3 (86/102)
			>50	Standard [34]	71.4 (10/14)	68.2 (60/88)	26.3 (10/38)	93.8 (60/64)	139.6	68.6 (70/102)
			≥60	Standard [34]	71.4 (10/14)	76.1 (67/88)	32.3 (10/31)	94.4 (67/71)	147.5	75.5 (77/102)
			>110	Standard [34]	50.0 (7/14)	92.0 (81/88)	50.0 (7/14)	92.0 (81/88)	142.0	86.3 (88/102)
			≥237	Standard [36]	35.7 (5/14)	98.9 (87/88)	83.3 (5/6)	90.6 (87/96)	134.6	90.2 (92/102)
Hepa-score	102	13.7 (14/102)	≥0.88	Sens + Spec = Max	78.6 (11/14)	75.0 (66/88)	33.3 (11/33)	95.7 (66/69)	153.6	75.5 (77/102)
			≥0.84	Standard [19,8]	78.6 (11/14)	71.6 (63/88)	30.6 (11/36)	95.5 (63/66)	150.2	72.5 (74/102)
ELF	102	13.7 (14/102)	≥9.8	Sens + Spec = Max	64.3 (9/14)	88.6 (78/88)	47.4 (9/19)	94.0 (78/83)	152.9	85.3 (87/102)
			≥11.3	Standard [26]	28.6 (4/14)	98.9 (87/88)	80.0 (4/5)	89.7 (87/97)	127.5	89.2 (91/102)

TE: transient elastography; Hya: hyaluronic acid, ELF: Enhanced Liver Fibrosis-Test; Sens: sensitivity, Spec: specificity, PPV: positive predictive value, NPV: negative predictive value

doi:10.1371/journal.pone.0138838.t004

Hepascore (n = 102). AUROC for > = F2 was 0.68 (95% CI 0.57–0.80), for F4 0.82 (0.69–0.95). Optimal cut off-value for F4 was > = 0.88. (no optimal cut off-value for > = F2, flat curve of the sum of sensitivity plus specificity). At a standard cut-off for F4 of >0.84 [19] 72.5% of patients were correctly classified (sensitivity 78.6%, specificity 71.6%).

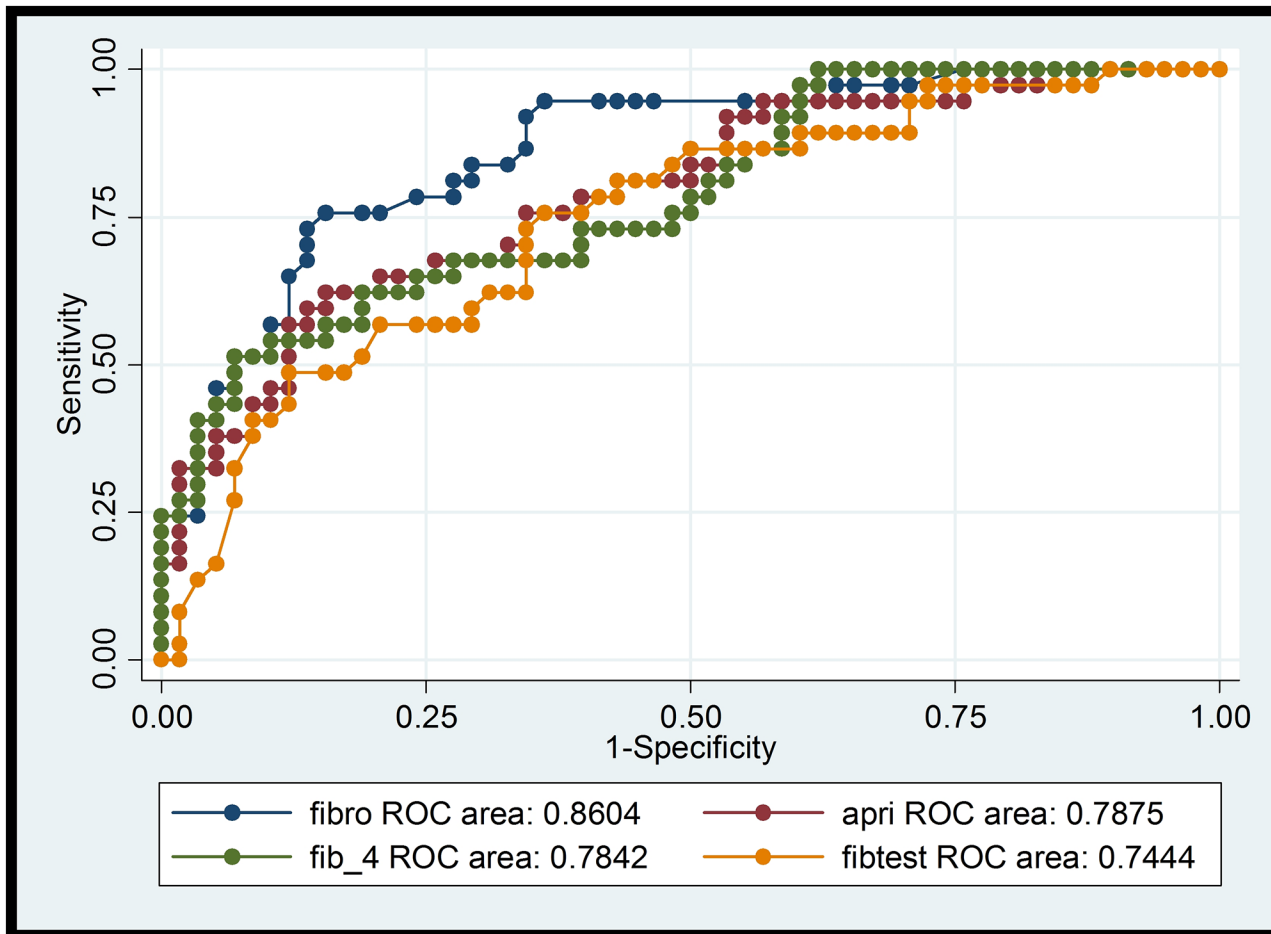


Fig 1. ROCs of transient elastography, APRI, FIB-4, Fibrotest for significant fibrosis (F> = 2). ROC: receiver operating characteristic curve; fibro: transient elastography (TE); fibtest: Fibrotest®.

doi:10.1371/journal.pone.0138838.g001

Enhanced Liver Fibrosis (ELF®)-Test (n = 102). AUROCs for > = F2 was 0.77 (95% CI 0.67–0.86), for F4 0.82 (0.69–0.95). Optimal cut-off for > = F2 was > = 9.0, for F4 > = 9.8. At a standard cut-off for F4 of > = 11.3 [26] 89.2% of patients were correctly classified (sensitivity 28.6%, specificity 97.7%).

Negative predictive value of NITs. The most reliable tests to rule out significant fibrosis were: Fibroscan (9 out of 60 patients with <7.2 kPa had F2, but none F3/4 (NPV 85%)); APRI-Score (8 out of 40 patients with APRI <0.5 had F2, but none F3/4 (NPV 80%)); FIB-4 Index (10 out of 49 patients with FIB-4 <1.45 had F2, but none F3/4 (NPV 80%)); Fibrotest® (2 out of 20 patients with Fibrotest® <0.32 had F2, but none F3/4 (NPV 90%)); and ELF®-Test (out of 13 patients with ELF® <7.7 none had > = F2 (NPV 100%)). Among 71 patients with hyaluronic acid <60ug/ml and 38 patients with Hepascore <0.5, there were patients not only with F2, but also with severe fibrosis (F3) and even cirrhosis (F4) (NPV (<F2) 76% for both tests).

Combination of different tests. Different algorithms combining TE and serum biomarkers have been proposed [27,28]. According to our data the combination of TE and blood marker does not increase the diagnostic accuracy for cirrhosis. Using a standard cut-off of TE > = 9.5 kPa to detect severe fibrosis (> = F3) as an indication for HCV-treatment, one fourth of baseline biopsies (26 of 105) could have been avoided. However, with this approach one

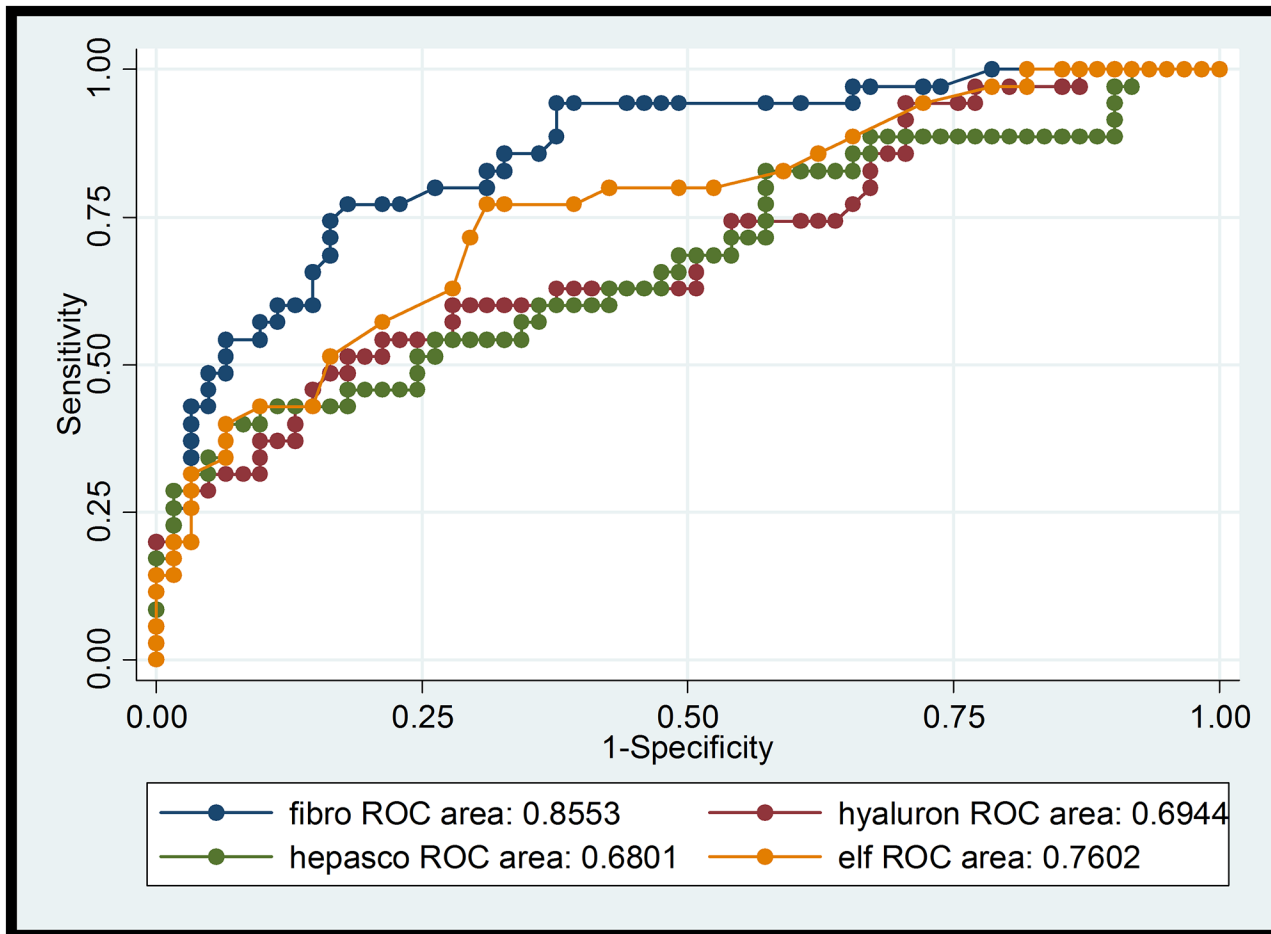


Fig 2. ROCs of transient elastography, hyaluronic acid, Hepascore, ELF-Test for significant fibrosis (F> = 2). ROC: receiver operating characteristic curve; fibro: transient elastography (TE); hyaluron: hyaluronic acid; hepasco: Hepascore, ELF: Enhanced Liver Fibrosis-Test[®].

doi:10.1371/journal.pone.0138838.g002

participant with severe fibrosis (F3) in biopsy would not have received treatment and six participants with mild fibrosis (F1) would have been treated without urgent need. The combination of TE and serum biomarkers was safer in ruling out significant fibrosis (F2) than TE alone. If TE was <7.0 kPa and FIB-4 <1.45, the chance of absence of significant fibrosis was high and liver biopsy could have been deferred too. With this approach 36 additional baseline biopsies (34%) could have been saved, but would have missed 5 patients with F2-fibrosis. However, no patient with liver stiffness <7.0 kPa or FIB-4 Index <1.45 had F3 or F4 fibrosis in liver biopsy.

Longitudinal follow-up

All participants with a follow up of at least 1 year (n = 101) were on ART (86 at baseline, 15 started during follow up). ART in this group usually included two nucleos(t)ide reverse transcriptase inhibitors (NRTIs: Lamivudine or Emtricitabin (n = 80) and Tenofovir (n = 52) or Abacavir (n = 40) and a protease inhibitors (predominantly boosted Lopinavir (n = 40) or boosted Atazanavir (n = 29)). 20 patients were treated with a combination therapy including a non-nucleoside reverse transcriptase inhibitor (NNRTI: Efavirenz (n = 11), Nevirapine (n = 66), Etravirine (n = 3)). 87 (83%) of the 105 enrolled participants had a complete follow up of 3 years.

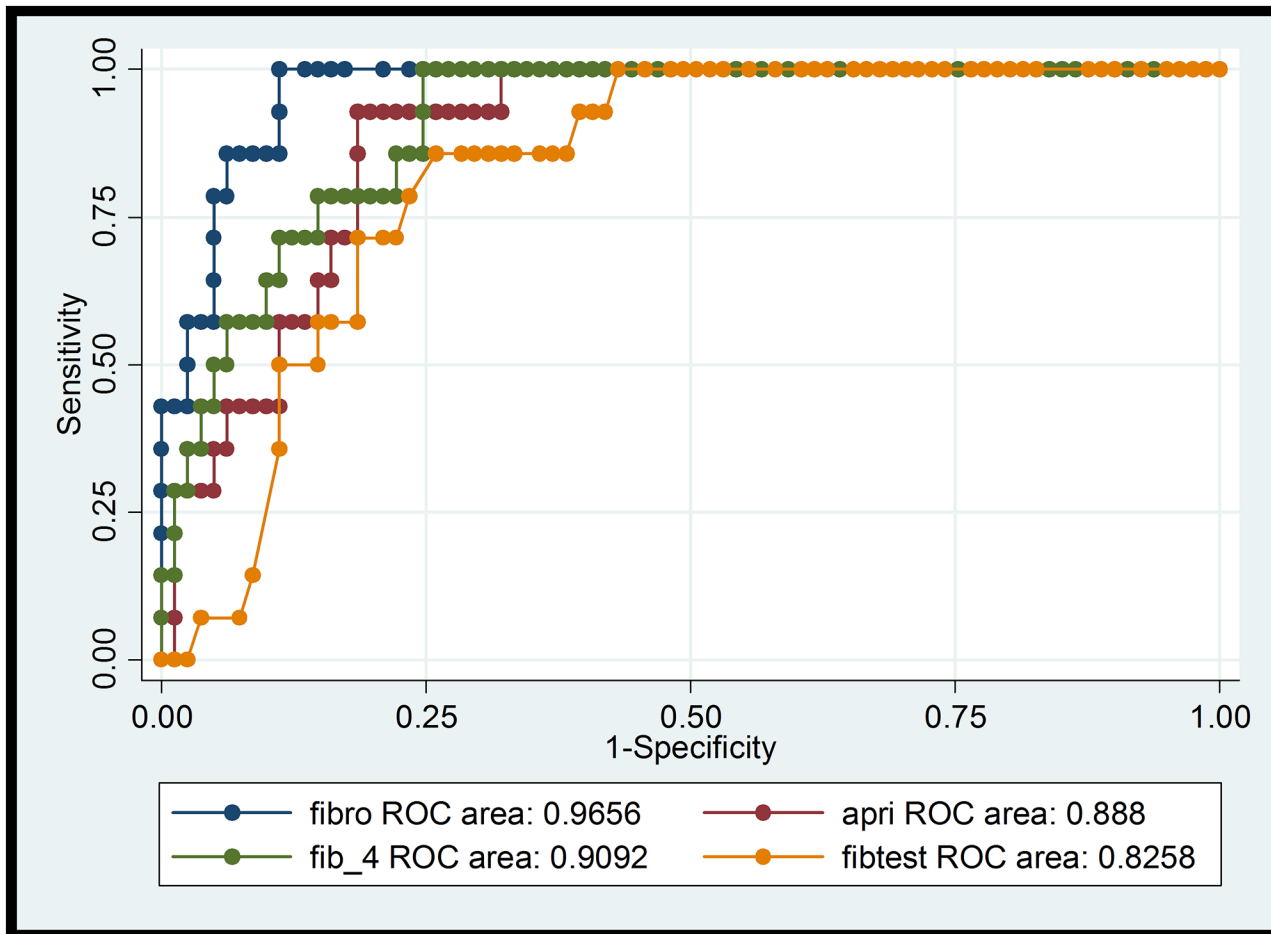


Fig 3. ROCs of transient elastography, APRI, FIB-4, Fibrotest for cirrhosis (F4). ROC: receiver operating characteristic curve; fibro: transient elastography (TE); fibtest: Fibrotest[®].

doi:10.1371/journal.pone.0138838.g003

Eight patients died during the follow-up period (1 liver failure, 1 hepatocellular carcinoma, 1 suicide, 1 bronchial neoplasm, 1 pneumonia, 1 HIV-associated, and 2 from an unknown cause but probably related to substance abuse). Nine patients dropped out due to several reasons (e.g. moving away, non-adherence). One patient was excluded from the analysis because of liver transplantation (due to cholangiocarcinoma) during follow up. One patient was hospitalised due to a flare of hepatitis. 20 patients (17 with complete follow up) received treatment of HCV infection (all patients with peg-interferon and ribavirin, one patient in combination with faldaprevir). 46% (9/20 respectively 8/17) had a sustained virologic response 24 weeks after end of treatment (SVR24).

Fibrosis assessment during follow up period. 87 (83%) of 105 participants with a complete follow-up of 3 years were analysed. According to the results of the baseline evaluation, after 3 years, the biochemical analysis was restricted to 3 indirect serum-markers (APRI-Score, FIB-4 Index, and Fibrotest).

Change of non-invasive tests over 3 years. Change in TE is shown in Fig 5. Mean TE (n = 82) was 8.2 kPa (range 3.0–34.8) at baseline and 7.9 kPa (range 3.4–36.3) after 3 years. Mean APRI-Score (n = 85) was 0.85 (range 0.10–4.16) at baseline and 0.81 (range 0.05–5.77) after 3 years. Mean FIB-4-Score (n = 85) was 1.74 (range 0.24–7.40) at baseline and 1.95 (range

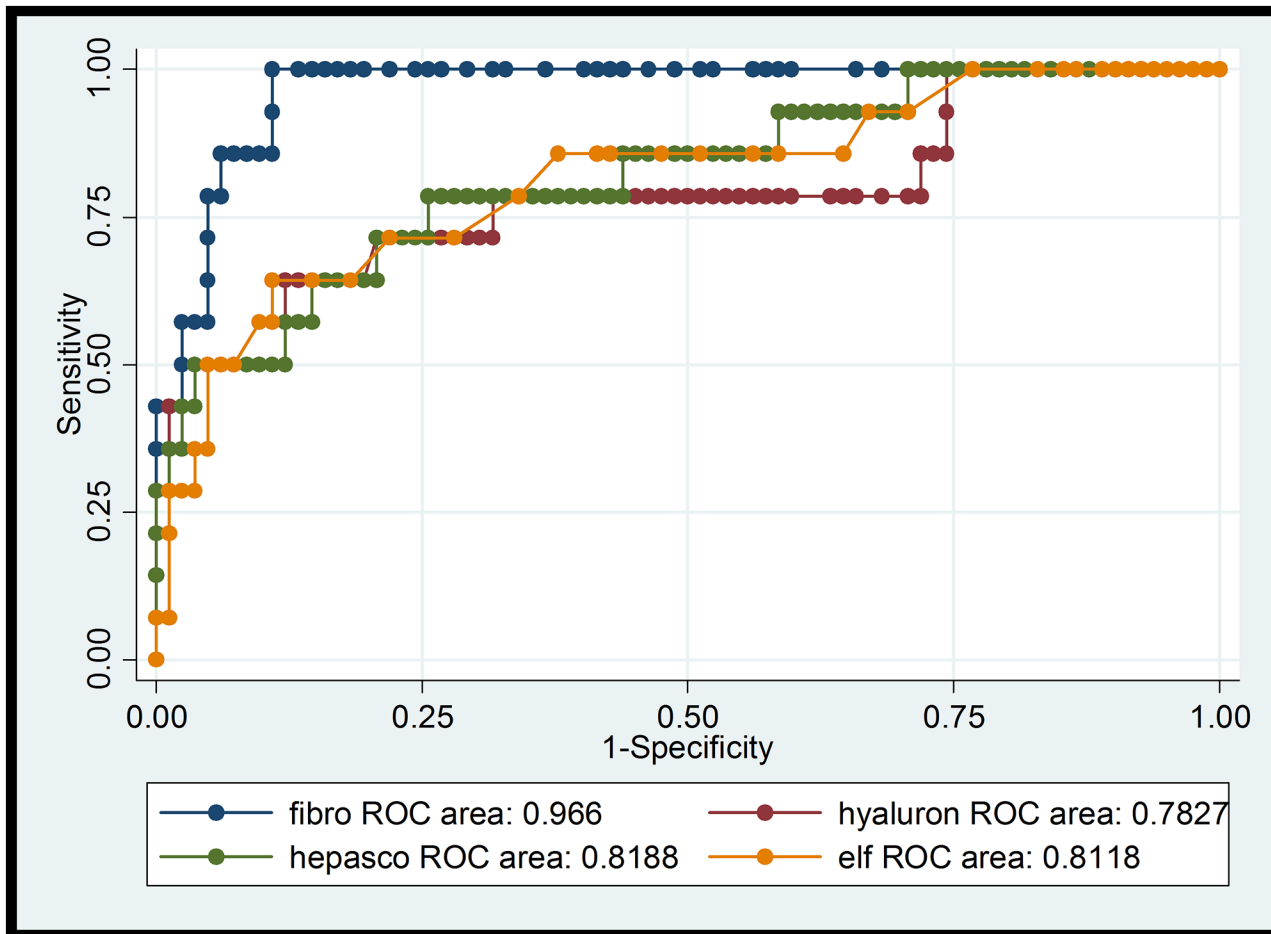


Fig 4. ROCs of transient elastography, hyaluronic acid, Hepascore, ELF-Test for cirrhosis (F4). ROC: receiver operating characteristic curve; fibro: transient elastography (TE); hyaluron: hyaluronic acid; hepasco: Hepascore, ELF: Enhanced Liver Fibrosis-Test[®].

doi:10.1371/journal.pone.0138838.g004

0.27–7.73) after 3 years. Mean Fibrotest (n = 85) was 0.56 (range 0.04–0.97) at baseline and 0.55 (range 0.04–0.97) after 3 years. Liver-stiffness, APRI and Fibrotest did not significantly change between baseline and follow-up examination after 3 years. There was weak evidence (p = 0.07) for an increase of FIB-4 (mean difference: 0.22 (95% CI: -0.02 to 0.45)).

Impact of HCV-treatment and treatment outcome on results. Mean TE was 8.1 kPa at baseline and 8.0 kPa after 3 years in patients without HCV-treatment (n = 66), mean TE declined from 8.5 kPa to 6.1 kPa in patients with SVR (n = 8) and from 9.9 kPa to 9.0 kPa in patients with HCV-treatment but without SVR (n = 8).

Change of histopathological stage of liver fibrosis. Half of patients with complete follow up refused a second liver biopsy. On follow up biopsy (n = 42) no or mild fibrosis (METAVIR stage F0 or F1) was observed in 26 patients. 10 patients had moderate (F2), 1 severe fibrosis (F3) and 5 cirrhosis (F4). Among 38 patients with the potential to increase in fibrosis stage (F0-F3 at baseline) 10 were progressors (8x 1-stage, 1x 2-stage (F0 to F2) and 1x 3-stage (F1 to F4) increase of fibrosis over 3-years), and 28 patients were non-progressors (27 stable, 1 regression of fibrosis). Only 5 patients with HCV-treatment had paired liver biopsy (4 stable, 1 regression of fibrosis).

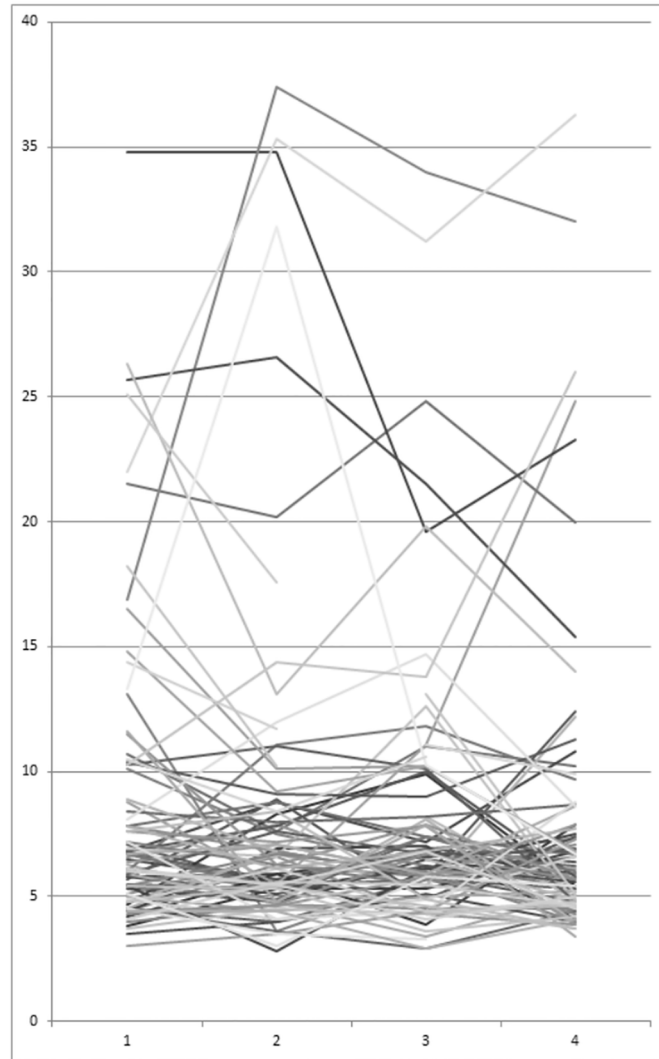


Fig 5. Change in transient elastography values (kPa) over time (3 years).

doi:10.1371/journal.pone.0138838.g005

Non-invasive tests in patients with paired liver biopsy and prediction of fibrosis progression. Among the 38 participants with a complete data set (paired liver biopsy and NITs available at baseline and after three years), mean increase in TE was significantly higher in progressors (+3.35 kPa) than in non-progressors, (-0.15 kPa, $p = 0.01$). Per kPa increase over 3 years the odds of fibrosis progression was 1.3fold increased (95% CI: 1.01–1.80, $p = 0.045$). (APRI: progressors: +0.36, non-progressors: -0.30, $p = 0.03$; OR per unit increase: 5.9 (0.85–42), $p = 0.073$; FIB-4: progressors: +0.75, non-progressors: -0.06, $p = 0.03$; OR per unit increase: 3.2 (0.84–11.9), $p = 0.088$; Fibrotest: progressors: +0.04, non-progressors: -0.03, $p = 0.269$)

Rapid liver disease progression (increase of >1 Metavir fibrosis stage during 3 years) was observed in 2 participants (A: F0 to F2 (2 stages) and B: F1 to F4 (3 stages)). Both patients would have been detected by regular follow-up of TE at yearly intervals (A: steady increase of liver stiffness over time from 5.4 to 7.5 kPa; B: heterogenic liver fibrosis suspected at baseline, increase from <7.0 to 12.6 kPa within 2 years). FIB-4 Index was also helpful (A: 4.51 at the end of the study; B: above <1.45 (standard cut-off for excluding significant fibrosis) after one year of follow-up).

Discussion

In this prospective cohort study of 105 HIV/HCV co-infected participants, we first compared the diagnostic performance of non-invasive tests versus liver biopsy, and second, we determined progression of liver disease during a three year follow-up. First, we found that TE was the non-invasive test with the highest diagnostic accuracy in detecting both significant liver fibrosis (METAVIR \geq F2) and liver cirrhosis (METAVIR F4) compared to liver biopsy as the gold standard. Three indirect serum markers (APRI-Score, FIB-4 Index, Fibrotest) and one direct serum marker (ELF-Test) were secondary alternatives, whereas performance of the other two direct serum markers (hyaluronic acid and Hepascore) was worse. Routinely available tests (APRI, FIB-4) performed as good as the patent-registered and more expensive blood tests (Fibrotest and ELF). Second, non-invasive tests did not change significantly during the 3-year follow-up, suggesting slow liver disease progression in a majority of HIV/HCV co-infected patients on ART. However, one in four participants with paired liver biopsy showed progression by 1 METAVIR fibrosis stage and two patients (5%) were rapid progressors (progression by >1 stage).

The diagnostic accuracy of all NITs rose with increasing stage of fibrosis (Figs 1–4), as described in the review of Chou and Wasson [7]. The accuracy of TE in predicting significant fibrosis and cirrhosis was clearly better than that of the six tested blood biomarkers. This finding is in concordance with the results of Degos et al. who compared TE, Fibrotest, Fibrometer, APRI-Score, and Hepascore in 1307 patients with viral hepatitis in France [29]. Performance of TE in our study was even better than in the mentioned analysis (AUROC for \geq F2 0.85 vs 0.76; for F4 0.97 vs 0.90). Our results also correspond to the findings of Castera et al. who analysed the diagnostic accuracy of TE, Fibrotest, APRI and two algorithms combining TE and Fibrotest (Castera) or APRI and Fibrotest (SAFE) in 116 HIV/HCV co-infected patients [30]. Castera found that TE and Fibrotest had a similar diagnostic accuracy for significant fibrosis (AUROC = 0.87 and 0.85 respectively), whereas for cirrhosis TE had the best accuracy (AUROC = 0.92). AUROC for TE was comparable in our study for $F \geq 2$ and even higher (0.97) for cirrhosis (F4). Thus, the use of combining different NITs does not seem to improve diagnostic performance. In contrast to our results, NITs using markers such as α -2-macroglobulin or apolipoprotein A1 (Fibrotest or Hepascore) tended to perform slightly better than APRI-Score and FIB-4 Index in other studies [9,8]. Both tests include total bilirubin (Table 1). Thus, Atazanavir-based ART (21 study participants concerned), which can cause elevated total bilirubin, may result in higher values and false positive results (i.e. overestimation of fibrosis stage). On the other hand HIV-induced thrombocytopenia could lead to an overestimation of liver fibrosis by FIB-4 Index and APRI-Score [31]. Sebastini et al. investigated the effect of aetiology of chronic liver disease (CLD) on the performance of different fibrosis biomarkers in a large cohort of 2411 patients with CLD [32]. APRI and Fibrotest exhibited the best performance (AUROCs of 0.7 for \geq F2 and F4) and the accuracy of these NITs was not significantly inferior in HIV/HCV co-infection ($n = 158$) compared to HCV mono-infection ($n = 1810$). In our HCV/HIV co-infected cohort with most participants on ART, FIB-4 and APRI performed as good as or even better than the more sophisticated and expensive composite markers. Hyaluronic acid, a NIT not likely affected by HIV-infection or ART, was less reliable in correctly detecting F2 and F4-fibrosis (AUROCs 0.70 and 0.79) in our study. Hepascore (which also contains hyaluronic acid, but also total bilirubin, GGT, α -2-macroglobulin, age and sex) did not perform better than hyaluronic acid alone.

In contrast to sensitivity and specificity, positive and negative predictive values depend on prevalence. With increasing prevalence, the positive predictive value (PPV) increases, whereas the negative predictive value (NPV) decreases. Accordingly, in our setting with a \geq F2

prevalence of 36%, a F4 prevalence of 13%, and a single optimal cut-off (where the sum of sensitivity and specificity was maximal), absence of cirrhosis (F4) could be predicted with NPVs of 94–100%, whereas the prediction of absence of significant fibrosis ($<F2$) was worse (NPVs 74–85%). On the other hand, PPVs for the presence of significant fibrosis ($\geq F2$) were generally higher than those for the presence of cirrhosis (F4) (55–79% versus 33–61%; Tables 3 and 4). Higher cut-off values can be used to increase specificity and PPV. Lower cut-off values improve sensitivity and NPV. For some of the non-invasive tests, there is a lower standard cut-off value for the absence and a higher standard cut-off value for the presence of significant fibrosis and cirrhosis, respectively (Table 2).

The strength of our study is the longitudinal follow-up of patients. Vermehren et al. Assessed liver fibrosis, associated risk factors and fibrosis progression in 202 consecutive HIV-infected individuals (35 with HCV co-infection) using TE (and Fibrotest at baseline) [33]. HCV co-infection was the predominant factor associated with prevalence of significant fibrosis. Up to 45.5% of HIV mono-infected patients had chronic elevation of liver enzymes. However there was no evidence for fibrosis progression (assessed by TE) during a median follow-up of two years in 68 HIV mono-infected individuals. Because of small numbers no statement on fibrosis progression in HIV/HCV co-infected patients was possible. Our study had a follow-up of 3-years, 83% of participants had a complete follow-up. However, only 40% of the participants agreed to have a second liver biopsy which shows a higher acceptance for non-invasive procedures. Since only four participants had severe fibrosis (F3) at baseline, we restricted our validation of the non-invasive tests to the detection of significant fibrosis ($\geq F2$) and cirrhosis (F4). Another limitation of our study is the lack of an optimal cut-off value for APRI, FIB-4, and Hepascore for the detection of $\geq F2$. We aimed at the definition of an optimal cut-off value both for the presence and absence of significant fibrosis using a cut-off value with a maximized total for sensitivity and specificity. For APRI, the optimal cut-off value was identical for $\geq F2$ and F4 ($> = 1.1$ in both cases). We recommend the use of standard cut-off values (<0.5 for the absence and >1.5 for the presence of significant fibrosis; <1.0 for the absence and >2.0 for the presence of cirrhosis), which also show some overlap and proved reliable in our setting (Tables 2–4). For FIB-4 and Hepascore, the curve of the sum of sensitivity and specificity had a plateau without distinct maximum. The highly questionable optimal cut-off values for $\geq F2$ were higher than that for F4. For the absence of significant fibrosis, FIB-4 <1.45 can be used (NPV 80%) (actually a cut-off to rule out $\geq F3$). For Hepascore, there is a single standard cut-off-value for absence/presence of significant fibrosis at 0.5 (NPV 76%, PPV 42%).

Our results support the new recommendations by EASL [31] to use non-invasive tests (NITs) as first line tests to stage liver fibrosis, also in HIV/HCV co-infection. According to our findings and these new guidelines, liver biopsy is only needed if repeated non-invasive tests show discordance. Transient elastography (TE) is the NIT of choice to stage liver fibrosis in HIV/HCV co-infected patients. Blood markers (APRI-Score, FIB-4 Index, Fibrotest, and ELF-Test) were less reliable alternatives and should be used only if TE is not available or impossible to perform. In this situation our data support the use of a simple, low-cost blood score (FIB-4 or APRI) rather than complex composite markers. Non-invasive tests of liver disease did not change significantly during a follow up of three years, suggesting slow liver disease progression in a majority of HIV/HCV co-infected patients on ART. Fibrosis progression however can be rapid in a minority of patients. Longitudinal follow-up at yearly intervals with assessment of liver fibrosis by NITs, preferably TE, is a reasonable approach in HIV/HCV co-infection if HCV-treatment is deferred.

Supporting Information

S1 Dataset. Subject characteristics, blood values, transient elastography values and histopathological results at participant-level.

(XLS)

Acknowledgments

The data were gathered by the five Swiss University Hospitals, two Cantonal Hospitals, 15 affiliated hospitals and 36 private physicians (listed in <http://www.shcs.ch/180-health-care-providers>).

Lead author for this group: Günthard H (President): huldrych.guenthard@usz.ch.

Contributors

Members of the Swiss HIV Cohort Study are Aubert V, Division of Immunology and Allergy, University Hospital Lausanne, University of Lausanne; Battgay M, Division of Infectious Diseases & Hospital Epidemiology, University Hospital Basel, University of Basel; Bernasconi E, Division of Infectious Diseases, Regional Hospital Lugano; Böni J, Institute of Medical Virology, University of Zürich; Bucher HC, Basel Institute for Clinical Epidemiology and Biostatistics, University Hospital Basel, University of Basel; Burton-Jeangros C, Department of Sociology, University of Geneva; Calmy A, Division of Infectious Diseases, University Hospital Geneva, University of Geneva; Cavassini M, Division of Infectious Diseases, University Hospital Lausanne, University of Lausanne; Dollenmaier G, Centre for Laboratory Medicine, Canton St. Gallen; Egger M, Institute of Social and Preventive Medicine, University of Bern; Elzi L, Division of Infectious Diseases & Hospital Epidemiology, University Hospital Basel, University of Basel; Fehr J, Division of Infectious Diseases and Hospital Epidemiology, University Hospital Zurich, University of Zurich; Fellay J, Global Health Institute, School of Life Sciences, Ecole Polytechnique Fédérale de Lausanne; Furrer H (Chairman of the Clinical and Laboratory Committee), Department of Infectious Diseases, Bern University Hospital and University of Bern; Fux CA, Clinic for Infectious Diseases and Hospital Hygiene, Cantonal Hospital Aarau; Gorgievski M, Institute for Infectious Diseases, University of Berne; Günthard H (President of the SHCS), Division of Infectious Diseases and Hospital Epidemiology, University Hospital Zurich, University of Zurich; Haerry D (deputy of the patient organization "Positive Council"), Hasse B, Division of Infectious Diseases and Hospital Epidemiology, University Hospital Zurich, University of Zurich; Hirsch HH, Division Infection Diagnostics, Department Biomedicine, University of Basel, and Division of Infectious Diseases & Hospital Epidemiology, University Hospital Basel; Hoffmann M, Division of Infectious Diseases and Hospital Epidemiology, Cantonal Hospital St. Gallen; Hösli I, Clinic for Obstetrics, University Hospital Basel, University of Basel; Kahlert C, Childrens Hospital of Eastern Switzerland, St. Gallen, and Division of Infectious Diseases and Hospital Epidemiology, Cantonal Hospital St. Gallen; Kaiser L, Division of Infectious Diseases and Laboratory of Virology, University Hospital Geneva, University of Geneva; Keiser O, Institute of Social and Preventive Medicine, University of Bern; Klimkait T, Division Infection Diagnostics, Department Biomedicine, University of Basel; Kouyos R, Division of Infectious Diseases and Hospital Epidemiology, University Hospital Zurich, University of Zurich; Kovari H, Division of Infectious Diseases and Hospital Epidemiology, University Hospital Zurich, University of Zurich; Ledergerber B, Division of Infectious Diseases and Hospital Epidemiology, University Hospital Zurich, University of Zurich; Martinetti G, Cantonal Institute of Microbiology, Bellinzona; Martinez de Tejada B, Department of Obstetrics and Gynecology, University Hospital Geneva, University of Geneva;

Metzner K, Division of Infectious Diseases and Hospital Epidemiology, University Hospital Zurich, University of Zurich; Müller N, Division of Infectious Diseases and Hospital Epidemiology, University Hospital Zurich, University of Zurich; Nadal D, University Children's Hospital, University of Zurich; Nicca D, Division of Infectious Diseases and Hospital Epidemiology, Cantonal Hospital St. Gallen; Pantaleo G, Division of Immunology and Allergy, University Hospital Lausanne, University of Lausanne; Rauch A (Chairman of the Scientific Board), Department of Infectious Diseases, Bern University Hospital and University of Bern; Regenass S, Department of Immunology, University Hospital Zürich, University of Zurich; Rickenbach M (Head of Data Centre), Swiss HIV Cohort Study, Data Centre, Institute for Social and Preventive Medicine, University of Lausanne; Rudin C (Chairman of the Mother & Child Sub-study), University Children's Hospital, University of Basel; Schöni-Affolter F, Swiss HIV Cohort Study, Data Centre, Institute for Social and Preventive Medicine, University of Lausanne; Schmid P, Division of Infectious Diseases and Hospital Epidemiology, Cantonal Hospital St. Gallen; Schüpbach J, Institute of Medical Virology, Swiss National Centre for Retroviruses, University of Zürich; Speck R, Division of Infectious Diseases and Hospital Epidemiology, University Hospital Zurich, University of Zurich; Tarr P, Cantonal Hospital Basel-land, University of Basel; Trkola A, Institute of Medical Virology, University of Zürich; Vernazza P, Division of Infectious Diseases and Hospital Epidemiology, Cantonal Hospital St. Gallen; Weber R, Division of Infectious Diseases and Hospital Epidemiology, University Hospital Zurich, University of Zurich; Yerly S, Laboratory of Virology, University Hospital Geneva, University of Geneva.

Author Contributions

Conceived and designed the experiments: PS MO. Performed the experiments: WJ PS MH AR BM. Analyzed the data: AB. Wrote the paper: PS AB PV RW. Critical revision of the manuscript and approval: MH AR WJ BM.

References

1. Benhamou Y, Bochet M, Di Martino V, Charlotte F, Azria F, Coutellier A, et al. Liver fibrosis progression in human immunodeficiency virus and hepatitis C virus coinfecting patients. The Multivirc Group. *Hepatology* Baltim Md. 1999; 30: 1054–1058. doi: [10.1002/hep.510300409](https://doi.org/10.1002/hep.510300409)
2. Bräu N, Salvatore M, Ríos-Bedoya CF, Fernández-Carbia A, Paronetto F, Rodríguez-Orengo JF, et al. Slower fibrosis progression in HIV/HCV-coinfecting patients with successful HIV suppression using antiretroviral therapy. *J Hepatol*. 2006; 44: 47–55. doi: [10.1016/j.jhep.2005.07.006](https://doi.org/10.1016/j.jhep.2005.07.006) PMID: [16182404](https://pubmed.ncbi.nlm.nih.gov/16182404/)
3. Rohrbach J, Stichel F, Schmid P, Thormann W, Kovari H, Scherrer A, et al. Changes in biomarkers of liver disease during successful combination antiretroviral therapy in HIV-HCV-coinfecting individuals. *Antivir Ther*. 2014; 19: 149–159. doi: [10.3851/IMP2686](https://doi.org/10.3851/IMP2686) PMID: [24036684](https://pubmed.ncbi.nlm.nih.gov/24036684/)
4. Macías J, Márquez M, Téllez F, Merino D, Jiménez-Aguilar P, López-Cortés LF, et al. Risk of liver decompensation among HIV/hepatitis C virus-coinfecting individuals with advanced fibrosis: implications for the timing of therapy. *Clin Infect Dis Off Publ Infect Dis Soc Am*. 2013; 57: 1401–1408. doi: [10.1093/cid/cit537](https://doi.org/10.1093/cid/cit537)
5. Konerman MA, Mehta SH, Sutcliffe CG, Vu T, Higgins Y, Torbenson MS, et al. Fibrosis progression in human immunodeficiency virus/hepatitis C virus coinfecting adults: prospective analysis of 435 liver biopsy pairs. *Hepatology* Baltim Md. 2014; 59: 767–775. doi: [10.1002/hep.26741](https://doi.org/10.1002/hep.26741)
6. Smith JO, Sterling RK. Systematic review: non-invasive methods of fibrosis analysis in chronic hepatitis C. *Aliment Pharmacol Ther*. 2009; 30: 557–576. doi: [10.1111/j.1365-2036.2009.04062.x](https://doi.org/10.1111/j.1365-2036.2009.04062.x) PMID: [19519733](https://pubmed.ncbi.nlm.nih.gov/19519733/)
7. Chou R, Wasson N. Blood tests to diagnose fibrosis or cirrhosis in patients with chronic hepatitis C virus infection: a systematic review. *Ann Intern Med*. 2013; 158: 807–820. doi: [10.7326/0003-4819-158-11-201306040-00005](https://doi.org/10.7326/0003-4819-158-11-201306040-00005) PMID: [23732714](https://pubmed.ncbi.nlm.nih.gov/23732714/)
8. Cacoub P, Carrat F, Bédossa P, Lambert J, Pénaranda G, Perronne C, et al. Comparison of non-invasive liver fibrosis biomarkers in HIV/HCV co-infected patients: the fibrovic study—ANRS HC02. *J Hepatol*. 2008; 48: 765–773. doi: [10.1016/j.jhep.2008.01.025](https://doi.org/10.1016/j.jhep.2008.01.025) PMID: [18314219](https://pubmed.ncbi.nlm.nih.gov/18314219/)

9. Calès P, Halfon P, Batisse D, Carrat F, Perré P, Penaranda G, et al. Comparison of liver fibrosis blood tests developed for HCV with new specific tests in HIV/HCV co-infection. *J Hepatol*. 2010; 53: 238–244. doi: [10.1016/j.jhep.2010.03.007](https://doi.org/10.1016/j.jhep.2010.03.007) PMID: [20493576](https://pubmed.ncbi.nlm.nih.gov/20493576/)
10. Myers RP, Benhamou Y, Imbert-Bismut F, Thibault V, Bochet M, Charlotte F, et al. Serum biochemical markers accurately predict liver fibrosis in HIV and hepatitis C virus co-infected patients. *AIDS Lond Engl*. 2003; 17: 721–725.
11. Castéra L, Vergniol J, Foucher J, Le Bail B, Chanteloup E, Haaser M, et al. Prospective comparison of transient elastography, Fibrotest, APRI, and liver biopsy for the assessment of fibrosis in chronic hepatitis C. *Gastroenterology*. 2005; 128: 343–350. PMID: [15685546](https://pubmed.ncbi.nlm.nih.gov/15685546/)
12. Lenth RV. Statistical power calculations. *J Anim Sci*. 2007; 85: E24–29.
13. Swiss HIV Cohort Study, Schoeni-Affolter F, Ledergerber B, Rickenbach M, Rudin C, Günthard HF, et al. Cohort profile: the Swiss HIV Cohort study. *Int J Epidemiol*. 2010; 39: 1179–1189. doi: [10.1093/ije/dyp321](https://doi.org/10.1093/ije/dyp321) PMID: [19948780](https://pubmed.ncbi.nlm.nih.gov/19948780/)
14. Bedossa P, Poynard T. An algorithm for the grading of activity in chronic hepatitis C. The METAVIR Cooperative Study Group. *Hepatol Baltim Md*. 1996; 24: 289–293. doi: [10.1002/hep.510240201](https://doi.org/10.1002/hep.510240201)
15. Sandrin L, Fourquet B, Hasquenoph J-M, Yon S, Fournier C, Mal F, et al. Transient elastography: a new noninvasive method for assessment of hepatic fibrosis. *Ultrasound Med Biol*. 2003; 29: 1705–1713. PMID: [14698338](https://pubmed.ncbi.nlm.nih.gov/14698338/)
16. Wai C-T, Greenson JK, Fontana RJ, Kalbfleisch JD, Marrero JA, Conjeevaram HS, et al. A simple non-invasive index can predict both significant fibrosis and cirrhosis in patients with chronic hepatitis C. *Hepatol Baltim Md*. 2003; 38: 518–526. doi: [10.1053/jhep.2003.50346](https://doi.org/10.1053/jhep.2003.50346)
17. Sterling RK, Lissen E, Clumeck N, Sola R, Correa MC, Montaner J, et al. Development of a simple non-invasive index to predict significant fibrosis in patients with HIV/HCV coinfection. *Hepatol Baltim Md*. 2006; 43: 1317–1325. doi: [10.1002/hep.21178](https://doi.org/10.1002/hep.21178)
18. Imbert-Bismut F, Ratziu V, Pieroni L, Charlotte F, Benhamou Y, Poynard T, et al. Biochemical markers of liver fibrosis in patients with hepatitis C virus infection: a prospective study. *Lancet Lond Engl*. 2001; 357: 1069–1075. doi: [10.1016/S0140-6736\(00\)04258-6](https://doi.org/10.1016/S0140-6736(00)04258-6)
19. Adams LA, Bulsara M, Rossi E, DeBoer B, Speers D, George J, et al. Hepascore: an accurate validated predictor of liver fibrosis in chronic hepatitis C infection. *Clin Chem*. 2005; 51: 1867–1873. doi: [10.1373/clinchem.2005.048389](https://doi.org/10.1373/clinchem.2005.048389) PMID: [16055434](https://pubmed.ncbi.nlm.nih.gov/16055434/)
20. Parkes J, Guha IN, Roderick P, Harris S, Cross R, Manos MM, et al. Enhanced Liver Fibrosis (ELF) test accurately identifies liver fibrosis in patients with chronic hepatitis C. *J Viral Hepat*. 2011; 18: 23–31. doi: [10.1111/j.1365-2893.2009.01263.x](https://doi.org/10.1111/j.1365-2893.2009.01263.x) PMID: [20196799](https://pubmed.ncbi.nlm.nih.gov/20196799/)
21. Colloredo G, Guido M, Sonzogni A, Leandro G. Impact of liver biopsy size on histological evaluation of chronic viral hepatitis: the smaller the sample, the milder the disease. *J Hepatol*. 2003; 39: 239–244. PMID: [12873821](https://pubmed.ncbi.nlm.nih.gov/12873821/)
22. Castera L, Forns X, Alberti A. Non-invasive evaluation of liver fibrosis using transient elastography. *J Hepatol*. 2008; 48: 835–847. doi: [10.1016/j.jhep.2008.02.008](https://doi.org/10.1016/j.jhep.2008.02.008) PMID: [18334275](https://pubmed.ncbi.nlm.nih.gov/18334275/)
23. Shaheen AAM, Myers RP. Diagnostic accuracy of the aspartate aminotransferase-to-platelet ratio index for the prediction of hepatitis C-related fibrosis: a systematic review. *Hepatol Baltim Md*. 2007; 46: 912–921. doi: [10.1002/hep.21835](https://doi.org/10.1002/hep.21835)
24. Lin Z-H, Xin Y-N, Dong Q-J, Wang Q, Jiang X-J, Zhan S-H, et al. Performance of the aspartate aminotransferase-to-platelet ratio index for the staging of hepatitis C-related fibrosis: an updated meta-analysis. *Hepatol Baltim Md*. 2011; 53: 726–736. doi: [10.1002/hep.24105](https://doi.org/10.1002/hep.24105)
25. Vallet-Pichard A, Mallet V, Nalpas B, Verkarre V, Nalpas A, Dhalluin-Venier V, et al. FIB-4: an inexpensive and accurate marker of fibrosis in HCV infection. comparison with liver biopsy and fibrotest. *Hepatol Baltim Md*. 2007; 46: 32–36. doi: [10.1002/hep.21669](https://doi.org/10.1002/hep.21669)
26. Lichtinghagen R, Pietsch D, Bantel H, Manns MP, Brand K, Bahr MJ. The Enhanced Liver Fibrosis (ELF) score: normal values, influence factors and proposed cut-off values. *J Hepatol*. 2013; 59: 236–242. doi: [10.1016/j.jhep.2013.03.016](https://doi.org/10.1016/j.jhep.2013.03.016) PMID: [23523583](https://pubmed.ncbi.nlm.nih.gov/23523583/)
27. Sebastiani G, Vario A, Guido M, Noventa F, Plebani M, Pistis R, et al. Stepwise combination algorithms of non-invasive markers to diagnose significant fibrosis in chronic hepatitis C. *J Hepatol*. 2006; 44: 686–693. doi: [10.1016/j.jhep.2006.01.007](https://doi.org/10.1016/j.jhep.2006.01.007) PMID: [16490278](https://pubmed.ncbi.nlm.nih.gov/16490278/)
28. Sebastiani G, Halfon P, Castera L, Pol S, Thomas DL, Mangia A, et al. SAFE biopsy: a validated method for large-scale staging of liver fibrosis in chronic hepatitis C. *Hepatol Baltim Md*. 2009; 49: 1821–1827. doi: [10.1002/hep.22859](https://doi.org/10.1002/hep.22859)
29. Degos F, Perez P, Roche B, Mahmoudi A, Asselineau J, Voitot H, et al. Diagnostic accuracy of FibroScan and comparison to liver fibrosis biomarkers in chronic viral hepatitis: a multicenter prospective

- study (the FIBROSTIC study). *J Hepatol.* 2010; 53: 1013–1021. doi: [10.1016/j.jhep.2010.05.035](https://doi.org/10.1016/j.jhep.2010.05.035) PMID: [20850886](https://pubmed.ncbi.nlm.nih.gov/20850886/)
30. Castera L, Winnock M, Pambrun E, Paradis V, Perez P, Loko M-A, et al. Comparison of transient elastography (FibroScan), FibroTest, APRI and two algorithms combining these non-invasive tests for liver fibrosis staging in HIV/HCV coinfecting patients: ANRS CO13 HEPAVIH and FIBROSTIC collaboration. *HIV Med.* 2014; 15: 30–39. doi: [10.1111/hiv.12082](https://doi.org/10.1111/hiv.12082) PMID: [24007567](https://pubmed.ncbi.nlm.nih.gov/24007567/)
 31. European Association for the Study of the Liver. Asociacion Latinoamericana para el Estudio del Hgado. EASL-ALEH Clinical Practice Guidelines: Non-invasive tests for evaluation of liver disease severity and prognosis. *J Hepatol.* 2015; 63: 237–264. PMID: [25911335](https://pubmed.ncbi.nlm.nih.gov/25911335/)
 32. Sebastiani G, Castera L, Halfon P, Pol S, Mangia A, Di Marco V, et al. The impact of liver disease aetiology and the stages of hepatic fibrosis on the performance of non-invasive fibrosis biomarkers: an international study of 2411 cases. *Aliment Pharmacol Ther.* 2011; 34: 1202–1216. doi: [10.1111/j.1365-2036.2011.04861.x](https://doi.org/10.1111/j.1365-2036.2011.04861.x) PMID: [21981787](https://pubmed.ncbi.nlm.nih.gov/21981787/)
 33. Vermehren J, Vermehren A, Mueller A, Carlebach A, Lutz T, Gute P, et al. Assessment of liver fibrosis and associated risk factors in HIV-infected individuals using transient elastography and serum biomarkers. *BMC Gastroenterol.* 2012; 12: 27. doi: [10.1186/1471-230X-12-27](https://doi.org/10.1186/1471-230X-12-27) PMID: [22453133](https://pubmed.ncbi.nlm.nih.gov/22453133/)
 34. McHutchison JG, Blatt LM, de Medina M, Craig JR, Conrad A, Schiff ER, et al. Measurement of serum hyaluronic acid in patients with chronic hepatitis C and its relationship to liver histology. Consensus Interferon Study Group. *J Gastroenterol Hepatol.* 2000; 15: 945–951. PMID: [11022838](https://pubmed.ncbi.nlm.nih.gov/11022838/)
 35. Patel K, Lajoie A, Heaton S, Pianko S, Behling CA, Bylund D, et al. Clinical use of hyaluronic acid as a predictor of fibrosis change in hepatitis C. *J Gastroenterol Hepatol.* 2003; 18: 253–257. PMID: [12603524](https://pubmed.ncbi.nlm.nih.gov/12603524/)
 36. Halfon P, Bourlière M, Pénaranda G, Deydier R, Renou C, Botta-Fridlund D, et al. Accuracy of hyaluronic acid level for predicting liver fibrosis stages in patients with hepatitis C virus. *Comp Hepatol.* 2005; 4: 6. doi: [10.1186/1476-5926-4-6](https://doi.org/10.1186/1476-5926-4-6) PMID: [16008833](https://pubmed.ncbi.nlm.nih.gov/16008833/)
 37. Becker L, Salameh W, Sferruzza A, Zhang K, Ng Chen R, Malik R, et al. Validation of hepascor, compared with simple indices of fibrosis, in patients with chronic hepatitis C virus infection in United States. *Clin Gastroenterol Hepatol Off Clin Pract J Am Gastroenterol Assoc.* 2009; 7: 696–701.