

# **Immunodeficiency and the risk of cervical intra-epithelial neoplasia 2/3 and cervical cancer: A nested case-control study in the Swiss HIV Cohort Study**

Gary M. Clifford<sup>1\*</sup>, Silvia Franceschi<sup>1</sup>, Olivia Keiser<sup>2</sup>, Franziska Schöni-Affolter<sup>2,3</sup>, Mauro Lise<sup>1</sup>, Silvia Dehler<sup>4</sup>, Fabio Levi<sup>5</sup>, Mohsen Mousavi<sup>6</sup>, Christine Bouchardy<sup>7</sup>, Aline Wolfensberger<sup>8</sup>, Katharine E. Darling<sup>9</sup>, Cornelia Staehelin<sup>10</sup>, Barbara Bertisch<sup>2,11</sup>, Esther Kuenzli<sup>12</sup>, Enos Bernasconi<sup>13</sup>, Michael Pawlita<sup>14</sup>, and Matthias Egger<sup>2,15</sup>, on behalf of the Swiss HIV Cohort Study\*\*.

<sup>1</sup>International Agency for Research on Cancer, 150 cours Albert Thomas, 69372 Lyon, cedex 08, France; <sup>2</sup>Institute of Social and Preventive Medicine (ISPM), University of Bern, Finkenhubelweg 11, CH-3012 Bern, Switzerland; <sup>3</sup>Coordination and Data Center, Swiss HIV Cohort Study, Rue du Bugnon 21, 1011 Lausanne, Switzerland; <sup>4</sup>Cancer Registry of the Cantons of Zurich and Zug, Vogelsangstrasse 10, 8091 Zurich, Switzerland; <sup>5</sup>Cancer Registry of the Cantons of Vaud and Neuchâtel, CHUV Falaises 1, 1011 Lausanne, Switzerland; <sup>6</sup>Cancer Registry of Basel, Schönbeinstr. 40, 4003 Basel, Switzerland; <sup>7</sup>Cancer Registry of the Canton of Geneva, Bd de la Cluse 55, 1205 Geneva, Switzerland; <sup>8</sup>Division of Infectious Diseases and Hospital Epidemiology, University Hospital Zurich, Rämistrasse 100, 8091 Zurich, Switzerland; <sup>9</sup>Service of Infectious Diseases, Vaud University Hospital, Rue du Bugnon 21, 1011 Lausanne, Switzerland; <sup>10</sup>Department of Infectious Diseases, Unit HIV/AIDS, Bern University Hospital and University of Bern, Finkenhubelweg 1, 3012 Bern, Switzerland; <sup>11</sup>Division of Infectious Diseases and Hospital Epidemiology, Cantonal Hospital of St Gallen, Rorschacherstr. 95, 9007 St Gallen, Switzerland; <sup>12</sup>Division of Infectious Diseases and Hospital Epidemiology, University

This article has been accepted for publication and undergone full peer review but has not been through the copyediting, typesetting, pagination and proofreading process which may lead to differences between this version and the Version of Record. Please cite this article as an 'Accepted Article', doi: 10.1002/ijc.29913

This article is protected by copyright. All rights reserved.

Hospital Basel, Petersgraben 4, 4031 Basel, Switzerland; <sup>13</sup>Regional Hospital, Via Tesserete 46, CH-6903 Lugano, Switzerland; <sup>14</sup>Department of Genome Modifications and Carcinogenesis, Infection and Cancer Program, German Cancer Research Center (DKFZ), Im Neuenheimer Feld 242, D-69120 Heidelberg, Germany; <sup>15</sup>Centre for Infectious Disease Epidemiology and Research (CIDER), University of Cape Town, Rondebosch, 7700 Cape Town, South Africa.

\***Correspondence to** Dr Gary Clifford, International Agency for Research on Cancer, 150 cours Albert Thomas, 69372 Lyon cedex 08, France; Tel.: +33-472738425; Fax: +33-472738345; (e-mail: clifford@iarc.fr).

\*\*The members of the Swiss HIV Cohort Study are listed in the Acknowledgements section.

**Short title:** Cervical cancer and neoplasia in SHCS

**Keywords:** cervical cancer; cervical neoplasia; HIV; human papillomavirus; immunodeficiency

**Abbreviations used:** AIDS, acquired immunodeficiency syndrome; cART, combined antiretroviral therapy; SHCS, Swiss HIV Cohort Study; CI, confidence interval; CIN, cervical intra-epithelial neoplasia; HPV, human papillomavirus; ICC, invasive cervical cancer; OR, odds ratio; pap, Papanicolaou; WHIV, women infected with human immunodeficiency virus;

**Article category:** Research Article / Epidemiology

**Impact and Novelty statement:** The findings from this study suggest that the earliness at which HIV infection is detected and cART is subsequently initiated is, in combination with HPV vaccination and cervical screening, key to the prevention of cervical cancer in women infected with HIV.

**Word count:** 3,188; **Figure count:** 2 (no colour); **Table count:** 4; **Reference count:** 37

**ABSTRACT**

HIV-infected women are at increased risk of cervical intra-epithelial neoplasia (CIN) and invasive cervical cancer (ICC), but it has been difficult to disentangle the influences of heavy exposure to HPV infection, inadequate screening, and immunodeficiency. A case-control study including 364 CIN2/3 and 20 ICC cases matched to 1,147 controls was nested in the Swiss HIV Cohort Study (1985-2013). CIN2/3 risk was significantly associated with low CD4+ cell counts, whether measured as nadir (odds ratio (OR) per 100-cell/ $\mu$ L decrease=1.15, 95% CI: 1.08, 1.22), or at CIN2/3 diagnosis (1.10, 95% CI: 1.04, 1.16). An association was evident even for nadir CD4+ 200-349 *versus*  $\geq$ 350 cells/ $\mu$ L (OR=1.57, 95% CI: 1.09, 2.25). After adjustment for nadir CD4+, a protective effect of >2-year cART use was seen against CIN2/3 (OR versus never cART use=0.64, 95% CI: 0.42, 0.98). Despite low study power, similar associations were seen for ICC, notably with nadir CD4+ (OR for 50 *versus*  $>$ 350 cells/ $\mu$ L= 11.10, 95% CI: 1.24, 100). HPV16-L1 antibodies were significantly associated with CIN2/3, but HPV16-E6 antibodies were nearly exclusively detected in ICC. In conclusion, worsening immunodeficiency, even at only moderately decreased CD4+ cell counts (200-349 CD4+ cells/ $\mu$ L), is a significant risk factor for CIN2/3 and cervical cancer.

## INTRODUCTION

There is a substantial excess of invasive cervical cancer (ICC) among women infected with HIV (WHIV).<sup>1</sup> This excess has tended to be largest in settings where WHIV have access to combined antiretroviral therapy (cART), but are not well reached by cervical screening.<sup>2-4</sup> Studies have also shown a consistent excess of cervical intraepithelial neoplasia grade 2/3 (CIN2/3) in WHIV.<sup>5,6</sup>

Sexual behaviors that favor acquisition of HIV are the same that favor the acquisition of high-risk human papillomavirus (HPV) types, which leads to a higher prevalence of HPV in WHIV.<sup>7</sup> In addition, however, HIV-related immunodeficiency is known to unfavorably influence HPV natural history. CD4+ cell count is negatively associated with the prevalence,<sup>8-11</sup> persistence,<sup>12</sup> and cumulative incidence<sup>13</sup> of HPV infection, as well as with cytological abnormalities<sup>11</sup> and CIN2/3<sup>6,14,15</sup> among WHIV.

The effects of HIV-related immunodeficiency on ICC have been more difficult to establish. Firstly, ICC has been classified as an acquired immunodeficiency syndrome (AIDS)-defining cancer since 1993, which created problems for early linkage studies between people with AIDS and cancer registries. Many prevalent cervical cancers diagnosed at AIDS onset had to be excluded from estimations of relative risk.<sup>16</sup> Secondly, screening can substantially curb the ICC burden.<sup>17</sup> Only in recent years are large studies of WHIV revealing that CD4+ cell count is indeed negatively related to ICC risk.<sup>18-20</sup>

The dose response relationship between the level of immunodeficiency and the risk of CIN2/3 and ICC remains unclear, however, as does the effect of cART-induced improvements in immunity on the evolution of cervical neoplasia. Thus, we undertook a case-control study nested within the Swiss HIV Cohort Study (SHCS), a nationwide study of HIV-positive persons, to characterize the influence of immunodeficiency and cART use on the development of CIN2/3 and ICC among WHIV.

## MATERIAL AND METHODS

### The Swiss HIV Cohort Study

The SHCS is nationwide prospective cohort that has been enrolling HIV-infected persons aged 16 years or older since 1988 from all five Swiss University hospitals (Basel, Bern, Geneva, Lausanne and Zurich), and two cantonal hospitals (St Gallen and Ticino).<sup>21</sup> Since 1995, interested private physicians have also been enrolling patients. Twenty-eight percent of participants in the SHCS are women. The database used for the current study included a total of 5,150 female SHCS participants contributing approximately 35,000 person years of active follow-up until October 2013. Detailed information on all AIDS-related diseases, CD4+ cell count and HIV-related treatments are collected at enrollment, and at each six-month follow-up visit. Questions on smoking history were asked to SHCS participants at all enrollment and follow-up visits after April 2000.

History of Papanicolaou (Pap) smear was self-reported by SHCS participants at all enrollment and follow-up SHCS visits after April 2000. Pap smear history was censored at the SHCS visit preceding the reference date (see definition below), which should exclude the smear that led to diagnosis of CIN2/3 or ICC.

Written informed consent was obtained from all SHCS participants. The present study was approved by the local ethical committees of the seven SHCS sites and of the International Agency for Research on Cancer.

### Ascertainment of incident cases

Cases of CIN2/3 and of ICC are routinely recorded in the SHCS. Additional cases were identified through record linkage with eight cantonal cancer registries.<sup>22,23</sup> Prevalent CIN2/3 and ICC cases were defined as women diagnosed before, or within one month of enrolment into the SHCS and were excluded from analyses.

### Selection of controls

Three control women never diagnosed with CIN2/3 or ICC were matched to each CIN2/3 or ICC case using incidence density sampling.<sup>24</sup> Controls had at least the same length of follow-up as the matched case, and could serve as controls for only one case.

● Matching criteria were: 1) SHCS centre; 2) HIV-transmission category (injecting drug users [IDU], heterosexual/other); 3) age at enrollment in SHCS (as close as possible, up to a maximum of nine years difference); 4) calendar year of enrollment in SHCS (as close as possible, up to a maximum of nine years difference). For each case a list of possible controls was drawn up and three controls were selected at random.

### Definitions

For each case-control pair, the reference date was defined as the date corresponding to the same length of follow-up as the matched case had at the time of the diagnosis of CIN2/3 or ICC (thus cases and controls were also matched for age and year of reference date). The nadir CD4+ cell count was defined as the lowest ever reported CD4+ cell count prior to the reference date.

cART use was defined as a combination of at least three antiretroviral drugs, including a protease inhibitor or a non-nucleoside reverse transcriptase inhibitor or three nucleosides, including abacavir. Only persons who had used cART for more than one month prior to the reference date were classified as ever users, and cART users were additionally stratified by duration of use from date of cART initiation to reference date ( $\leq 2$  years versus  $> 2$  years). This duration may include periods of interruptions, but these occur in only a small fraction of SHCS participants on cART (5-10%).<sup>25</sup>

History of AIDS was defined as a history of any AIDS-defining illness prior to the reference date. Of note, for ICC and corresponding controls, AIDS-defining events were

counted only if diagnosed at least 3 months before the reference date, to avoid that ICC itself was the first AIDS-defining illness.

We considered CIN2/3 and ICC to be different biological entities and chose not to combine in any analyses.

#### HPV serology

For a sub-set of CIN2/3 and ICC cases with available serum samples (79 and 13, respectively), as well as 248 corresponding controls, HPV antibodies were tested in serum samples taken closest in time prior to the reference date. HPV antibodies were tested at the German Cancer Research Center (DKFZ) in Heidelberg, Germany, using multiplex bead-based technology (xMAP, Luminex Corporation, Austin, Texas)<sup>26</sup> including antigens for L1, and E6 proteins of HPV16. Antigens were categorized as antibody positive or negative by applying previously defined antigen-specific cut-off values.<sup>27</sup>

#### Statistical Analysis

Odds ratios (OR) and corresponding 95% confidence intervals (CI) for possible risk factors were computed separately for CIN2/3 and ICC by univariate conditional logistic regression conditioned on matching variables. For CD4+ cell count measures, OR were also calculated per 100cells/ $\mu$ l decrease considering CD4+ cell count as a continuous variable. The OR for cART use adjusted for nadir CD4+ cell count was additionally computed. In analyses stratified by ever versus never cART use, however, OR for nadir CD4+ cell count were computed by unconditional logistic regression with adjustment for matching variables (SHCS centre; HIV-transmission category; age at enrollment; year at enrollment), due to the need to break case:control pairs (cART use was not a matching criteria). Missing data were considered as a separate category in the above models. For smoking and Pap smear history that were unavailable prior to April 2000 and April 2001

respectively, conditioning on year at reference date meant that most missing data clustered in the same case:control pairs which were effectively dropped from the estimates for these two variables). Chi-square for trend was calculated for the categories listed in the tables. *P* values of all statistical tests were two-sided.

● Median CD4+ cell counts were calculated separately for never and ever cART users in yearly periods prior to the reference date, restricted to cases and controls who (1) were under active follow-up and (2) had a valid CD4+ cell count, in each yearly period. If more than one measurement was available during any one time period, that closest to the reference date was used. Matching was not retained in the presentation of median CD4+ cell counts.



## RESULTS

A total of 508 CIN2/3 and 40 ICC cases were identified in SHCS participants, of whom 437 and 32 were identified from the SHCS database, and 71 and 8 additional cases were identified through record linkage with eight population-based Swiss Cantonal Cancer Registries.<sup>22,23</sup> One hundred and forty CIN2/3 and 16 ICC occurring before (or within one month of) SHCS enrollment, as well as four CIN2/3 and four ICC diagnosed more than six months after the last SHCS follow-up date, were excluded, leaving 364 and 20 eligible incident cases occurring during active SHCS follow-up, respectively.

Table 1 shows the distribution of the CIN2/3 and ICC cases, as well as their respective controls, by matching variables. For five CIN2/3 cases, only two valid controls were available. A majority of both CIN2/3 and ICC cases were diagnosed after the introduction of cART in 1996 (72% and 65% respectively), and were under active follow-up in the SHCS for less than five years prior to diagnosis (66% and 60%, respectively). However, ICC cases (mean age 34.3 years) were older than CIN2/3 cases (29.7).

There were no significant associations with history of Pap smear, neither for CIN2/3 nor ICC, but this information was available only for case:control pairs whose reference date was after April 2001 (the date at which this information started to be collected in the SHCS). Nevertheless, findings did suggest frequent lack of screening among ICC cases (37.5%) (Table 2). There was no association of smoking history with CIN2/3 and, although 75% of ICC cases were current or former smokers compared to 51% of controls, this difference did not reach statistical significance. Likewise, no associations with a history of AIDS were observed for either CIN2/3 or ICC (Table 2).

Associations of CIN2/3 and ICC with various markers of immunodeficiency are also shown in Table 2. CIN2/3 (OR per 100 cell/ $\mu$ L decrease = 1.10, 95% CI: 1.04, 1.16) and ICC (1.16, 95% CI: 0.89, 1.51) were similarly associated with low CD4+ cell count at reference date, although the ICC association did not reach statistical significance. CIN2/3

was also significantly associated with CD4+/CD8+ ratio (OR for <0.25 *versus* >0.50 = 1.67, 95% CI: 1.19, 2.35). No significant trend in association with CIN2/3 or ICC was observed for HIV viral load (Table 2), or CD8+ cell count (data not shown). CIN2/3 was significantly associated with a low nadir CD4+ cell count (OR per 100 cells/ $\mu$ L decrease = 1.15, 95% CI: 1.08, 1.22), even at moderate levels of immunosuppression (OR for 200-349 versus  $\geq$ 350 cells/ $\mu$ L = 1.57, 95% CI: 1.09, 2.25). For ICC, an equally strong trend as for CIN2/3 was found (OR per 100 cells/ $\mu$ L decrease = 1.19, 95% CI: 0.88, 1.60), but only the comparison of nadir CD4+ cell count of <50 *versus*  $\geq$ 500 cells/ $\mu$ L reached statistical significance (OR=11.10, 95% CI: 1.24, 100).

About half of CIN2/3 and ICC cases had started cART before the reference date (Table 3), but there were no significant differences in cART use between cases and controls for either disease. Upon stratification by duration of cART use, however, women with  $\leq$ 2 years use showed elevated CIN2/3 risks compared to never users, whilst those with >2 years use showed non-significantly reduced risks. After additional adjustment for nadir CD4+ cell count, the OR for >2-years cART use was associated with a significant reduction in CIN2/3 risk (OR=0.64, 95% CI: 0.42, 0.98). A similar association, albeit non-significant, was seen for ICC risk (e.g. OR for  $\geq$ 2years *versus* never=0.34, 95% CI: 0.05, 2.26) (Table 3).

Table 4 shows associations of nadir CD4+ cell count with CIN2/3 and ICC, stratified by cART use (never/ever). Nadir CD4+ cell count was significantly associated with CIN2/3 risk both among ever users (OR per 100 cell/ $\mu$ L decrease = 1.12, 95% CI: 1.03, 1.21) and never users (1.17, 95% CI: 1.05, 1.30). Nadir CD4+ cell count was strongly associated with ICC risk in never users (OR for <50 *versus*  $\geq$ 350 cells/ $\mu$ L= 12.90, 95% CI: 0.38, 436, *P* for trend=0.004), but the corresponding associations did not reach statistical significance

in ever users (OR for  $<50$  versus  $\geq 350$  cells/ $\mu\text{L}$  = 6.41, 95% CI: 0.43, 95.1,  $P$  for trend=0.26).

Figure 1 shows median CD4+ cell counts in yearly periods prior to the reference date in CIN2/3 cases and controls, separately for never and ever cART users. As expected, mean CD4+ cell counts among both cases and controls declined over time among never cART users (Figure 1A) but were stable in ever cART users (Figure 1B). Median CD4+ cell count was lower in cases compared to that in controls at most time points prior to the reference date, and the size of this difference did not appear to vary by time period, neither for never or ever users. Indeed, the association between CIN2/3 risk and more historical measures of CD4+ count was similar to that for CD4+ cell count at reference date (e.g. matched OR per 100 cells/ $\mu\text{L}$  decrease for CD4+ cell count 3-4 years prior to reference date = 1.15, 95% CI: 1.05-1.25, data not shown). Numbers were too few to allow a similar analysis for ICC.

Seropositivity for anti-HPV16E6 was found in 2 out of 13 ICC cases (15%) compared to 0 out of 37 controls. Three out of 79 CIN2/3 cases and 6 out of 211 corresponding controls were seropositive for anti-HPV16E6. Seroprevalence of anti-HPV16L1 was significantly higher in CIN2/3 cases (40%) than controls (26%) (OR = 1.93, 95% CI: 1.09, 3.40) (Figure 2).

## DISCUSSION

Our carefully matched case-control study within the SHCS was able to confirm the role of immunodeficiency in the aetiology of CIN2/3<sup>14,15</sup> and ICC<sup>18-20</sup> among WHIV. Furthermore, we showed that increases in CIN2/3 and ICC risk are already evident even at moderate levels of immunosuppression (200-349 cells/ $\mu$ L), similar to our recent findings in the SHCS for anal cancer, which is also HPV-related.<sup>28</sup> Low CD4+ cell counts at diagnosis were significantly associated with risk of CIN2/3, but nadir CD4+ cell count appeared a more discriminant CD4+ measure of both CIN2/3 and ICC.

We were able to demonstrate a protective effect of cART use on the risk of CIN2/3, but exclusively if the use had lasted 2 years or more. Whereas early studies failed to show a significant effect of cART use on HPV-related outcomes, others have since reported significant decreases in prevalence of HPV infection,<sup>15,29</sup> incidence of cytological lesions,<sup>30</sup> or carcinoma *in situ*/ICC<sup>4</sup> in medium/long-term users. In our study, the protective effect of cART use on CIN2/3 was strengthened by adjusting for nadir CD4+ cell count, which partially adjusts for the negative confounding of CD4+ cell count by indication to treat. Indeed, cART tends to be initiated only when CD4+ cell count falls below a certain level, so that non-cART users had higher average nadir CD4+ cell counts than cART users. In our present study, mean nadir CD4+ cell count in cART users was 163 in CIN2/3 and 207 in corresponding controls, versus 293 and 363, respectively among non-cART users. Previous findings of lack of influence of cART may thus be due to lack of accounting for duration of treatment and CD4+ cell count at cART initiation.

As more than half of cases and controls had never used cART at the reference date, we were able to show the effect of nadir CD4+ cell counts on CIN2/3 both in ever and never users of cART. Two previous studies on this topic showed that CD4+ cell counts at diagnosis were significantly associated with CIN2/3 risk, but in non-cART users only.<sup>14,15</sup> These findings suggest that cART use can only partially eliminate the negative influence of

a low nadir on CIN2/3, which differs from other AIDS-defining malignancies like immunoblastic non-Hodgkin lymphoma<sup>31</sup> and Kaposi sarcoma<sup>32</sup> in which cART can rapidly lower cancer risk. Hence the benefits of cART on ICC may be limited by the non-reversibility of certain pre-invasive stages.

● Cervical cancer screening is a pre-requisite for diagnosis of CIN2/3, and its treatment has undoubtedly curbed incidence rates of ICC in the SHCS. Even in the SHCS, however, screening has been sub-optimal with 20-30% of WHIV in the control groups reporting no history of Pap smear screening. Indeed, among the eight ICC cases diagnosed after 2001 with information on past screening, five had no history of Pap smear. Two ICC cases reported abnormal Pap smears and only one case a normal Pap smear in the two years prior to ICC diagnosis. Thus the excess risk of ICC seen during the pre-cART period in the SHCS in comparison to the general population<sup>22</sup> is likely to be a combination of immunodeficiency and inadequate screening and/or treatment of precancerous lesions.

Our limited data on anti-HPV16 L1 seroprevalence demonstrates the high burden of HPV in SHCS women. Thirty percent of women in the control group were seropositive for anti-HPV16 L1, which compares to only 10% among mixed-sex controls from a large European-wide population-based study using the same serological assay.<sup>33</sup> Furthermore, whilst anti-HPV16 L1 is considered the best marker of cumulative exposure to HPV16 infection, the reported seroprevalence is certainly an under-estimate as a substantial fraction of HPV infections are known not to elicit L1 seroconversion.<sup>34</sup>

Antibodies to HPV16 E6 were seen in ICC, but were almost absent, not only in controls, but also in CIN2/3, confirming them as a marker specific to late stages of HPV malignant transformation in the anogenital tract.<sup>33</sup> Nevertheless, only 15% of ICC cases were seropositive for antibodies against HPV16 E6, which compares to 32% seen in serum samples taken close in time to ICC in the HIV-negative population.<sup>35</sup>

An association, albeit non-significant, between smoking and ICC risk in WHIV is consistent with the sexual behavior-adjusted findings from a large pooled analysis of ICC in HIV-uninfected women<sup>36</sup> and with the significant association seen for anal cancer in the SHCS<sup>28</sup> and CIN2/3 in WHIV in the U.S.<sup>6</sup>

The SHCS has many strengths, including the duration (predating the introduction of cART) and regularity of follow-up and medication, as well as the comprehensiveness of clinical and laboratory information. Approximately half of all persons with HIV in Switzerland have been enrolled in the SHCS, and females and non-cART users are well represented. An additional strength was the supplement of CIN2/3 and ICC diagnoses through linkage with cancer registries. However, the SHCS was not designed to evaluate the natural history of HPV infection and related disease, with gynecological consultations occurring largely outside the framework of the study. Hence, Pap smear history was based on self-report, being added in 2001 only, without any information on cytological diagnoses, and the SHCS does not collect the ideal type of sample for HPV testing (i.e. cervical cells and/or biopsies). This meant that it was not possible to review histological diagnoses, in order to confirm ICC, or to separate CIN 2 from the truer cancer precursor, CIN3.<sup>37</sup> Furthermore, the completeness of recording of CIN2/3 in the SHCS is known to differ over time and between cantons. This is one reason that a nested case:control design with careful matching is probably more appropriate than an incidence rate approach. Although ICC cases were few and gave us limited statistical power to achieve significant associations, previous data are very scant. Indeed, the historically sub-optimal level of cervical screening and treatment in the SHCS meant that the observed rate of ICC was higher than in well-screened cohort studies of WHIV.<sup>6</sup>

In conclusion, our data suggest that worsening immunodeficiency, even at only moderately decreased CD4+ cell counts (200-349 CD4+ cells/ $\mu$ L), is a significant risk factor for CIN2/3 and cervical cancer. Thus, the earliness at which HIV infection is

detected and cART is subsequently initiated is, in combination with HPV vaccination and cervical screening, key to the prevention of cervical cancer in WHIV.

Accepted Article

## ACKNOWLEDGEMENTS

The authors thank Dr Kristina Michael for support in the serological analyses, and Dr Luigino Dal Maso and Dr Jerry Polesel for data linkage between the SHCS and cancer registries.

The members of the Swiss HIV Cohort Study are Aubert V, Battegay M, Bernasconi E, Böni J, Bucher HC, Burton-Jeangros C, Calmy A, Cavassini M, Dollenmaier G, Egger M, Elzi L, Fehr J, Fellay J, Furrer H (Chairman of the Clinical and Laboratory Committee), Fux CA, Gorgievski M, Günthard H (President of the SHCS), Haerry D (deputy of "Positive Council"), Hasse B, Hirsch HH, Hoffmann M, Hösli I, Kahlert C, Kaiser L, Keiser O, Klimkait T, Kouyos R, Kovari H, Ledergerber B, Martinetti G, Martinez de Tejada B, Metzner K, Müller N, Nadal D, Nicca D, Pantaleo G, Rauch A (Chairman of the Scientific Board), Regenass S, Rickenbach M (Head of Data Center), Rudin C (Chairman of the Mother & Child Substudy), Schöni-Affolter F, Schmid P, Schüpbach J, Speck R, Tarr P, Trkola A, Vernazza P, Weber R, Yerly S.

This study was performed within the framework of the Swiss HIV Cohort Study (SHCS-project 676), supported by the Swiss National Science Foundation (Grant 148522); and OncoSuisse (ICP OCS 01355-03-2003, KFS-02478-08-2009). Mauro Lise received a fellowship from the Associazione Italiana per la Ricerca sul Cancro carried out at the International Agency for Research on Cancer.

Bertisch B has received consultation and speaker's fees and occasional travel fund to scientific meetings from AbbVie, ViiV, BMS, Gilead and Janssen and an unrestricted grant through the Institution to conduct epidemiological studies from Gilead. The other authors have no conflict of interest to declare.



**REFERENCES**

- (1) Grulich AE, van Leeuwen MT, Falster MO, Vajdic CM. Incidence of cancers in people with HIV/AIDS compared with immunosuppressed transplant recipients: a meta-analysis. *Lancet* 2007;370:59-67.
- (2) Dal Maso L, Franceschi S, Polesel J, Braga C, Piselli P, Crocetti E, Falcini F, Guzzinati S, Zanetti R, Vercelli M, Rezza G, for the Cancer and AIDS Registry Linkage Study. Risk of cancer in persons with AIDS in Italy, 1985-1998. *Br J Cancer* 2003;89:94-100.
- (3) Galceran J, Marcos-Gragera R, Soler M, Romaguera A, Ameijide A, Izquierdo A, Borrás J, de Sanjosé SL, Casabona J. Cancer incidence in AIDS patients in Catalonia, Spain. *Eur J Cancer* 2007;43:1085-91.
- (4) Chen YC, Li CY, Liu HY, Lee NY, Ko WC, Ko NY. Effect of antiretroviral therapy on the incidence of cervical neoplasia among HIV-infected women: a population-based cohort study in Taiwan. *AIDS* 2014;28:709-15.
- (5) Chaturvedi AK, Madeleine MM, Biggar RJ, Engels EA. Risk of human papillomavirus-associated cancers among persons with AIDS. *J Natl Cancer Inst* 2009;101:1120-30.
- (6) Massad LS, Xie X, D'Souza G, Darragh TM, Minkoff H, Wright R, Colie C, Sanchez-Keeland L, Strickler HD. Incidence of cervical precancers among HIV-seropositive women. *Am J Obstet Gynecol* 2015;212:606-8.
- (7) Clifford GM, Goncalves MA, Franceschi S, for the HPV and HIV Study Group. Human papillomavirus types among women infected with HIV: a meta-analysis. *AIDS* 2006;20:2337-44.
- (8) Chaturvedi AK, Dumestre J, Gaffga AM, Mire KM, Clark RA, Braly PS, Dunlap K, Beckel TE, Hammons AF, Kissinger PJ, Hagensee ME. Prevalence of human papillomavirus genotypes in women from three clinical settings. *J Med Virol* 2005;75:105-13.
- (9) Strickler HD, Palefsky JM, Shah KV, Anastos K, Klein RS, Minkoff H, Duerr A, Massad LS, Celentano DD, Hall C, Fazzari M, Cu-Uvin S, et al. Human papillomavirus type 16 and immune status in human immunodeficiency virus-seropositive women. *J Natl Cancer Inst* 2003;95:1062-71.

- (10) Strickler HD, Burk RD, Fazzari M, Anastos K, Minkoff H, Massad LS, Hall C, Bacon M, Levine AM, Watts DH, Silverberg MJ, Xue X, et al. Natural history and possible reactivation of human papillomavirus in human immunodeficiency virus-positive women. *J Natl Cancer Inst* 2005;97:577-86.
- (11) Harris TG, Burk RD, Palefsky JM, Massad LS, Bang JY, Anastos K, Minkoff H, Hall CB, Bacon MC, Levine AM, Watts DH, Silverberg MJ, et al. Incidence of cervical squamous intraepithelial lesions associated with HIV serostatus, CD4 cell counts, and human papillomavirus test results. *JAMA* 2005;293:1471-6.
- (12) Rowhani-Rahbar A, Hawes SE, Sow PS, Toure P, Feng Q, Dem A, Dembele B, Critchlow CW, N'Doye I, Kiviat NB. The impact of HIV status and type on the clearance of human papillomavirus infection among Senegalese women. *J Infect Dis* 2007;196:887-94.
- (13) Massad LS, Xie X, Burk R, Keller MJ, Minkoff H, D'Souza G, Watts DH, Palefsky J, Young M, Levine AM, Cohen M, Strickler HD. Long-term cumulative detection of human papillomavirus among HIV seropositive women. *AIDS* 2014;28:2601-8.
- (14) Huchko MJ, Leslie H, Sneden J, Maloba M, Abdulrahim N, Bukusi EA, Cohen CR. Risk factors for cervical precancer detection among previously unscreened HIV-infected women in Western Kenya. *Int J Cancer* 2014;134:740-5.
- (15) de Vuyst H, Mugo NR, Chung MH, McKenzie KP, Nyongesa-Malava E, Tenet V, Njoroge JW, Sakr SR, Meijer CM, Snijders PJ, Rana FS, Franceschi S. Prevalence and determinants of human papillomavirus infection and cervical lesions in HIV-positive women in Kenya. *Br J Cancer* 2012;107:1624-30.
- (16) Frisch M, Biggar RJ, Goedert JJ. Human papillomavirus-associated cancers in patients with human immunodeficiency virus infection and acquired immunodeficiency syndrome. *J Natl Cancer Inst* 2000;92:1500-10.
- (17) Shiels MS, Pfeiffer RM, Gail MH, Hall HI, Li J, Chaturvedi AK, Bhatia K, Uldrick TS, Yarchoan R, Goedert JJ, Engels EA. Cancer burden in the HIV-infected population in the United States. *J Natl Cancer Inst* 2011;103:753-62.

- (18) Patel P, Hanson DL, Sullivan PS, Novak RM, Moorman AC, Tong TC, Holmberg SD, Brooks JT. Incidence of types of cancer among HIV-infected persons compared with the general population in the United States, 1992-2003. *Ann Intern Med* 2008;148:728-36.
- (19) Guiguet M, Boue F, Cadranel J, Lang JM, Rosenthal E, Costagliola D. Effect of immunodeficiency, HIV viral load, and antiretroviral therapy on the risk of individual malignancies (FHDH-ANRS CO4): a prospective cohort study. *Lancet Oncol* 2009;10:1152-9.
- (20) Abraham AG, Strickler HD, D'Souza G. Invasive cervical cancer risk among HIV-infected women is a function of CD4 count and screening. *J Acquir Immune Defic Syndr* 2013;63:e163.
- (21) Schoeni-Affolter F, Ledergerber B, Rickenbach M, Rudin C, Gunthard HF, Telenti A, Furrer H, Yerly S, Francioli P. Cohort profile: the Swiss HIV Cohort study. *Int J Epidemiol* 2010;39:1179-89.
- (22) Franceschi S, Lise M, Clifford GM, Rickenbach M, Levi F, Maspoli M, Bouchardy C, Dehler S, Jundt G, Ess S, Bordoni A, Konzelmann I, et al. Changing patterns of cancer incidence in the early- and late-HAART periods: the Swiss HIV Cohort Study. *Br J Cancer* 2010;103:416-22.
- (23) Clifford GM, Polesel J, Rickenbach M, Dal Maso L, Keiser O, Kofler A, Rapiti E, Levi F, Jundt G, Fisch T, Bordoni A, De Weck D, et al. Cancer risk in the Swiss HIV Cohort Study: associations with immunodeficiency, smoking, and highly active antiretroviral therapy. *J Natl Cancer Inst* 2005;97:425-32.
- (24) Knol MJ, Vandenbroucke JP, Scott P, Egger M. What do case-control studies estimate? Survey of methods and assumptions in published case-control research. *Am J Epidemiol* 2008;168:1073-81.
- (25) Ledergerber B, Cavassini M, Battegay M, Bernasconi E, Vernazza P, Hirschel B, Furrer H, Rickenbach M, Weber R. Trends over time of virological and immunological characteristics in the Swiss HIV Cohort Study. *HIV Med* 2011;12:279-88.

- (26) Waterboer T, Sehr P, Michael KM, Franceschi S, Nieland JD, Joos TO, Templin MF, Pawlita M. Multiplex human papillomavirus serology based on in situ-purified glutathione s-transferase fusion proteins. *Clin Chem* 2005;51:1845-53.
- (27) Clifford GM, Shin HR, Oh JK, Waterboer T, Ju YH, Vaccarella S, Quint W, Pawlita M, Franceschi S. Serologic response to oncogenic human papillomavirus types in male and female university students in Busan, South Korea. *Cancer Epidemiol Biomarkers Prev* 2007;16:1874-9.
- (28) Bertisch B, Franceschi S, Lise M, Vernazza P, Keiser O, Schoni-Affolter F, Bouchardy C, Dehler S, Levi F, Jundt G, Ess S, Pawlita M, et al. Risk Factors for Anal Cancer in Persons Infected With HIV: A Nested Case-Control Study in the Swiss HIV Cohort Study. *Am J Epidemiol* 2013;178:877-84.
- (29) Zeier MD, Botha MH, Engelbrecht S, Machekano RN, Jacobs GB, Isaacs S, van SM, van der Merwe H, Mason D, Nachega JB. Combination antiretroviral therapy reduces the detection risk of cervical human papilloma virus infection in women living with HIV. *AIDS* 2015;29:59-66.
- (30) Minkoff H, Zhong Y, Burk RD, Palefsky JM, Xue X, Watts DH, Levine AM, Wright RL, Colie C, D'Souza G, Massad LS, Strickler HD. Influence of adherent and effective antiretroviral therapy use on human papillomavirus infection and squamous intraepithelial lesions in human immunodeficiency virus-positive women. *J Infect Dis* 2010;201:681-90.
- (31) Polesel J, Clifford GM, Rickenbach M, Dal Maso L, Battegay M, Bouchardy C, Furrer H, Hasse B, Levi F, Probst-Hensch NM, Schmid P, Franceschi S. Non-Hodgkin lymphoma incidence in the Swiss HIV Cohort Study before and after highly active antiretroviral therapy. *AIDS* 2008;22:301-6.
- (32) Franceschi S, Dal Maso L, Rickenbach M, Polesel J, Hirschel B, Cavassini M, Bordoni A, Elzi L, Ess S, Jundt G, Mueller N, Clifford GM. Kaposi sarcoma incidence in the Swiss HIV Cohort Study before and after highly active antiretroviral therapy. *Br J Cancer* 2008;99:800-4.

- (33) Kreimer AR, Brennan P, Lang Kuhs K.A., Waterboer T, Clifford GM, Franceschi S, Michel A, Willauck Fleckenstein M, Riboli E, Castellaugué X, Hildesheim A. Human papillomavirus antibodies and future risk of anogenital cancer: a nested case-control study in the European Prospective Investigation into Cancer and Nutrition(EPIC)study. *J Clin Oncol* 2015;33:877-84.
- (34) Wang SS, Schiffman M, Herrero R, Carreon J, Hildesheim A, Rodriguez AC, Bratti MC, Sherman ME, Morales J, Guillen D, Alfaro M, Clayman B, et al. Determinants of human papillomavirus 16 serological conversion and persistence in a population-based cohort of 10 000 women in Costa Rica. *Br J Cancer* 2004;91:1269-74.
- (35) Combes JD, Pawlita M, Waterboer T, Hammouda D, Rajkumar T, Vanhems P, Snijders P, Herrero R, Franceschi S, Clifford G. Antibodies against high-risk human papillomavirus proteins as markers for invasive cervical cancer. *Int J Cancer* 2014;135:2453-61.
- (36) International Collaboration of Epidemiological Studies of Cervical Cancer. Cervical carcinoma and reproductive factors: Collaborative reanalysis of individual data on 16,563 women with cervical carcinoma and 33,542 women without cervical carcinoma from 25 epidemiological studies. *Int J Cancer* 2006;119:1108-24.
- (37) Schiffman M, Castle PE, Jeronimo J, Rodriguez AC, Wacholder S. Human papillomavirus and cervical cancer. *Lancet* 2007;370:890-907.

**TABLE LEGENDS**

**Table 1.** Distribution of 364 Cervical Intra-epithelial Neoplasia 2/3 Cases, 20 Invasive Cervical Cancer Cases and 1,147 Control Subjects According to Matching Variables. The Swiss HIV Cohort Study, 1985-2013.

**Table 2.** Odds Ratios for Cervical Intra-epithelial Neoplasia 2/3 and Invasive Cervical Cancer by Selected Characteristics at Reference Date<sup>a</sup>. The Swiss HIV Cohort Study, 1985-2013.

**Table 3.** Odds Ratios for Cervical Intra-epithelial Neoplasia 2/3 and Invasive Cervical Cancer by cART Use Before and After Adjustment for Nadir CD4 Cell Count. The Swiss HIV Cohort Study, 1985-2013.

**Table 4.** Odds Ratios for Cervical Intra-epithelial Neoplasia 2/3 and Invasive Cervical Cancer by Nadir CD4+ Count, Separately Among never and ever cART Users. The Swiss HIV Cohort Study, 1985-2013.

**FIGURE LEGENDS**

**Figure 1.** Box plots of CD4+ cell counts at yearly intervals prior to reference date, among cervical intra-epithelial neoplasia 2/3 and controls, stratified by A) never cART users and B) ever cART users. The Swiss HIV Cohort Study, 1985-2013.

Abbreviations: CIN2/3 = cervical intra-epithelial grade 2/3; cART = combined antiretroviral therapy.

A) Never cART users

B) Ever cART users

**Figure 2.** Seropositivity for HPV16 antibodies among cervical intra-epithelial neoplasia 2/3, invasive cervical cancer and corresponding controls. The Swiss HIV Cohort Study, 1985-2013.

\*Significantly different from corresponding controls in conditional logistic regression model.

Abbreviations: HPV = human papillomavirus; CIN2/3 = cervical intra-epithelial grade 2/3; ICC = invasive cervical cancer.

**Table 1.** Distribution of 364 Cervical Intra-epithelial Neoplasia 2/3 Cases, 20 Invasive Cervical Cancer Cases and 1,147 Control Subjects According to Matching Variables. The Swiss HIV Cohort Study, 1985-2013.

	CIN2/3				ICC			
	Cases		Controls		Cases		Controls	
	N	(%)	N	(%)	N	(%)	N	(%)
<b>Overall</b>	364		1087		20		60	
<b>Center</b>								
Basel	25	(6.9)	75	(6.9)	2	(10.0)	6	(10.0)
Bern	81	(22.3)	241	(22.2)	3	(15.0)	9	(15.0)
Geneva	54	(14.8)	162	(14.9)	1	(5.0)	3	(5.0)
St Gallen	45	(12.4)	134	(12.3)	-	-	-	-
Ticino	22	(6.0)	64	(5.9)	-	-	-	-
Vaud	44	(12.1)	132	(12.1)	5	(25.0)	15	(25.0)
Zurich	93	(25.5)	279	(25.7)	9	(45.0)	27	(45.0)
<b>HIV-transmission category</b>								
IDU	139	(38.2)	413	(38.0)	9	(45.0)	27	(45.0)
Het/Other	225	(61.8)	674	(62.0)	11	(55.0)	33	(55.0)
<b>Age at reference date (years)<sup>a</sup></b>								
<30	91	(25.0)	268	(24.7)	3	(15.0)	10	(16.7)
30-34	119	(32.7)	328	(30.2)	6	(30.0)	13	(21.7)
35-39	87	(23.9)	276	(25.4)	2	(10.0)	16	(26.7)
≥40	67	(18.4)	215	(19.8)	9	(45.0)	21	(35.0)
<b>Calendar period at reference date<sup>a</sup></b>								
1985-1992	22	(6.0)	86	(7.9)	3	(15.0)	11	(18.3)
1993-1996	80	(22.0)	201	(18.5)	4	(20.0)	5	(8.3)
1997-2001	120	(33.0)	326	(30.0)	4	(20.0)	17	(28.3)
2002-2006	76	(20.9)	293	(27.0)	5	(25.0)	22	(36.7)
2007-2013	66	(18.1)	181	(16.7)	4	(20.0)	5	(8.3)
<b>Duration of follow-up before reference date (years)<sup>a</sup></b>								
0-1	146	(40.1)	437	(40.2)	8	(40.0)	24	(40.0)
2-4	93	(25.5)	280	(25.8)	4	(20.0)	12	(20.0)
5-9	88	(24.2)	266	(24.5)	2	(10.0)	6	(10.0)
≥10	37	(10.2)	104	(9.6)	6	(30.0)	18	(30.0)

Abbreviations: CIN, cervical intra-epithelial neoplasia; Het, heterosexual; ICC, invasive cervical cancer; IDU, intravenous drug users.

<sup>a</sup>reference date for cases = date of diagnosis of ICC or CIN2/3, and for controls = date after a similar length of follow-up in the Swiss HIV Cohort Study as the corresponding matched case.



**Table 2.** Odds Ratios for Cervical Intra-epithelial Neoplasia 2/3 and Invasive Cervical Cancer by Selected Characteristics at Reference Date<sup>a</sup>. The Swiss HIV Cohort Study, 1985-2013.

	CIN2/3					ICC				
	Cases		Controls		OR <sup>b</sup> (95% CI)	Cases		Controls		OR <sup>b</sup> (95% CI)
	N	(%)	N	(%)		N	%	N	%	
<b>Overall</b>	364		1087			20		60		
<b>History of Pap smear</b>										
No	40	(29.2)	129	(28.1)	1	3	(37.5)	5	(20.8)	1
Yes	97	(70.8)	330	(71.9)	0.90 (0.57, 1.41)	5	(62.5)	19	(79.2)	0.39 (0.06, 2.45)
Unknown <sup>c</sup>	227		628			12		36		
<b>Smoking Status</b>										
Never	89	(43.4)	289	(45.6)	1	3	(25.0)	18	(48.6)	1
Former	17	(8.3)	59	(9.3)	0.93 (0.51, 1.70)	3	(25.0)	6	(16.2)	} 3.73 (0.75, 18.6)
Current	99	(48.3)	286	(45.1)	1.13 (0.78, 1.64)	6	(50.0)	13	(35.1)	
Unknown <sup>d</sup>	159		453			8		23		
<b>History of AIDS<sup>e</sup></b>										
No	280	(76.9)	851	(78.3)	1	14	(70.0)	45	(75.0)	1
Yes	84	(23.1)	236	(21.7)	1.08 (0.81, 1.45)	6	(30.0)	15	(25.0)	1.36 (0.39, 4.69)
Unknown	227		628			12		36		
<b>CD4+ cell count, cells/<math>\mu</math>L</b>										
$\geq 500$	93	(27.4)	350	(35.7)	0.89 (0.62, 1.26)	3	(17.6)	20	(37.0)	0.95 (0.14, 6.60)
350-499	70	(20.6)	238	(24.3)	1	2	(11.8)	10	(18.5)	1
200-349	87	(25.7)	202	(20.6)	1.51 (1.04, 2.18)	8	(47.1)	15	(27.8)	3.49 (0.58, 21.1)
<200	89	(26.3)	191	(19.5)	1.72 (1.16, 2.54)	4	(23.5)	9	(16.7)	3.04 (0.38, 24.3)
Unknown	25		106			3		6		
$\chi^2$ trend (P)					< 0.001					0.062
Per 100 $\mu$ L decrease					1.10 (1.04, 1.16)					1.16 (0.89, 1.51)
<b>CD4+/CD8+ ratio</b>										
>0.50	140	(41.5)	502	(51.4)	1	6	(35.3)	23	(43.4)	1
0.25-0.49	111	(32.9)	279	(28.6)	1.47 (1.09, 1.97)	6	(35.3)	23	(43.4)	} 1.38 (0.46, 4.16)
<0.25	86	(25.5)	195	(20.0)	1.67 (1.19, 2.35)	5	(29.4)	7	(13.2)	
Unknown	27		111			3		7		
$\chi^2$ trend (P)					< 0.001					
<b>HIV Viral load, copies/mL</b>										
<500	175	(64.8)	472	(59.3)	1	8	(66.7)	22	(51.2)	1
500-9,999	37	(13.7)	168	(21.1)	0.59 (0.39, 0.88)	1	(8.33)	9	(20.9)	} 0.53 (0.12, 2.33)
$\geq 10,000$	58	(21.5)	156	(19.6)	1.00 (0.70, 1.44)	3	(25.0)	12	(27.9)	
Unknown	94		291			8		17		
$\chi^2$ trend (P)					0.26					
<b>Nadir CD4+ cell count, cells/<math>\mu</math>L</b>										
$\geq 350$	68	(18.8)	323	(29.9)	1	2	(10.0)	16	(27.1)	1
200-349	88	(24.4)	280	(25.9)	1.57 (1.09, 2.25)	4	(20.0)	15	(25.4)	2.94 (0.44, 19.9)

50-199	135	(37.4)	314	(29.0)	2.20 (1.55, 3.11)	9	(45.0)	21	(35.6)	4.45 (0.81, 24.4)
<50	70	(19.4)	165	(15.2)	2.20 (1.47, 3.30)	5	(25.0)	7	(11.9)	11.10 (1.24, 100)
Unknown	3		5			0		1		
$\chi^2$ trend (P)					< 0.001					0.019
Per 100 $\mu$ L decrease					1.15 (1.08, 1.22)					1.19 (0.88, 1.60)

Abbreviations: CI, confidence interval; CIN, cervical intra-epithelial neoplasia; ICC, invasive cervical cancer; OR, odds ratio.

<sup>a</sup>reference date for cases = date of diagnosis of ICC / CIN2/3, and for controls = date after a similar length of follow-up in the SHCS as the matched case.

<sup>b</sup>conditioned on matching variables.

<sup>c</sup>available only after April 2001.

<sup>d</sup>available only after April 2000.

<sup>e</sup>for ICC and corresponding controls, history of AIDS only if  $\geq 3$  months before ICC (see methods).

**Table 3.** Odds Ratios for Cervical Intra-epithelial Neoplasia 2/3 and Invasive Cervical Cancer by cART Use Before and After Adjustment for Nadir CD4 Cell Count. The Swiss HIV Cohort Study, 1985-2013.

History of cART use	Cases		Controls		OR <sup>a</sup> (95% CI)	Adjusted OR <sup>b</sup> (95% CI)
	N	(%)	N	(%)		
<b><u>CIN2/3</u></b>	364		1087			
Never	160	(44.0)	513	(47.2)	1	1
Ever	204	(56.0)	574	(52.8)	1.24 (0.90, 1.70)	0.96 (0.68, 1.35)
≤2years	103	(28.3)	231	(21.3)	1.59 (1.12, 2.26)	1.25 (0.86, 1.81)
>2years	101	(27.7)	343	(31.5)	0.87 (0.59, 1.29)	0.64 (0.42, 0.98)
<b><u>ICC</u></b>	20		60			
Never	10	(50.0)	32	(53.3)	1	1
Ever	10	(50.0)	28	(46.7)	1.19 (0.37, 3.82)	0.62 (0.15, 2.54)
≤2years	4	(20.0)	8	(13.3)	1.60 (0.40, 6.30)	0.97 (0.20, 4.66)
>2years	6	(30.0)	20	(33.3)	0.78 (0.16, 3.86)	0.34 (0.05, 2.26)

---

Abbreviations: cART, combined antiretroviral therapy; CI, confidence interval; CIN, cervical intra-epithelial neoplasia; ICC, invasive cervical cancer; OR, odds ratio.

<sup>a</sup>conditioned upon matching variables; <sup>b</sup>conditioned on matching variables and adjusted for nadir CD4 categories in Table 2.

**Table 4.** Odds Ratios for Cervical Intra-epithelial Neoplasia 2/3 and Invasive Cervical Cancer by Nadir CD4+ Count, Separately Among never and ever cART Users. The Swiss HIV Cohort Study, 1985-2013.

Nadir CD4+ cell count, cells/ $\mu$ L	Never cART users					Ever cART users				
	Cases		Controls		OR <sup>a</sup> (95% CI)	Cases		Controls		OR <sup>a</sup> (95% CI)
	N	(%)	N	(%)		N	%	N	%	
<b><u>CIN2/3</u></b>	160		513			204		574		
$\geq 350$	51	(32.5)	229	(45.1)	1	17	(8.3)	94	(16.4)	1
200-349	43	(27.4)	126	(24.8)	1.53 (0.96, 2.43)	45	(22.1)	154	(26.8)	1.67 (0.90, 3.01)
50-199	42	(26.8)	99	(19.5)	1.85 (1.13, 3.05)	93	(45.6)	215	(37.5)	2.51 (1.40, 4.48)
<50	21	(13.4)	54	(10.6)	1.78 (0.97, 3.26)	49	(24.0)	111	(19.3)	2.58 (1.37, 4.84)
Unknown	3		5			0		0		
X <sup>2</sup> trend (P)					0.013					< 0.001
Per 100 / $\mu$ L decrease					1.12 (1.03, 1.21)					1.17 (1.05, 1.30)
<b><u>ICC</u></b>	10		32			10		28		
$\geq 350$	1	(10.0)	14	(45.2)	} 1	1	(10.0)	2	(7.1)	} 1
200-349	4	(40.0)	11	(35.5)		0	(0.0)	4	(14.3)	
50-199	4	(40.0)	5	(16.1)	4.10 (0.60, 28.1)	5	(50.0)	16	(57.1)	2.55 (0.20, 31.8)
<50	1	(10.0)	1	(3.2)	12.90 (0.38, 436)	4	(40.0)	6	(21.4)	6.41 (0.43, 95.1)
Unknown	0		1			0		0		
X <sup>2</sup> trend (P)					0.004					0.26
Per 100 / $\mu$ L decrease					1.65 (1.00, 2.72)					1.05 (0.58, 1.88)

Abbreviations: cART, combined antiretroviral therapy; CI, confidence interval; CIN, cervical intra-epithelial neoplasia; ICC, invasive cervical cancer; OR, odds ratio.

<sup>a</sup>adjusted for matching variables (see methods).

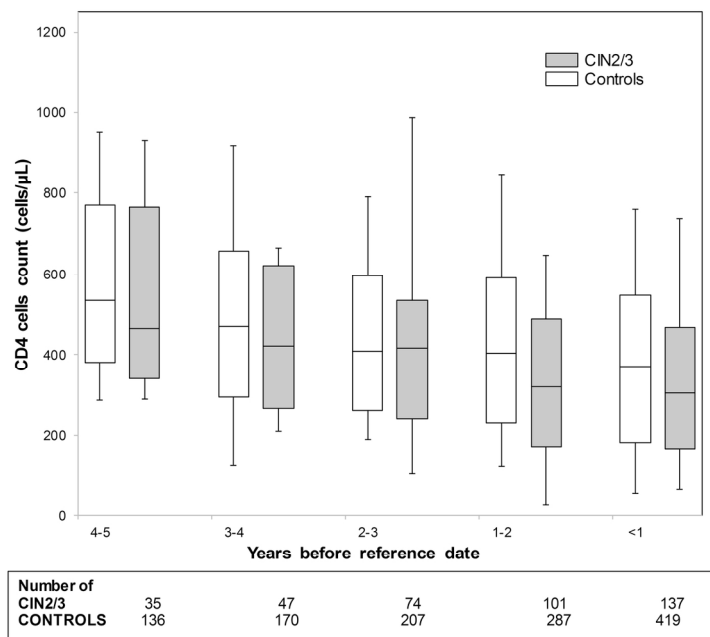


Figure 1. Box plots of CD4+ cell counts at yearly intervals prior to reference date, among cervical intra-epithelial neoplasia 2/3 and controls, stratified by A) never cART users and B) ever cART users. The Swiss HIV Cohort Study, 1985-2013. Abbreviations: CIN2/3 = cervical intra-epithelial grade 2/3; cART = combined antiretroviral therapy. Figure 1 A) Never cART users.  
168x109mm (300 x 300 DPI)

Accept

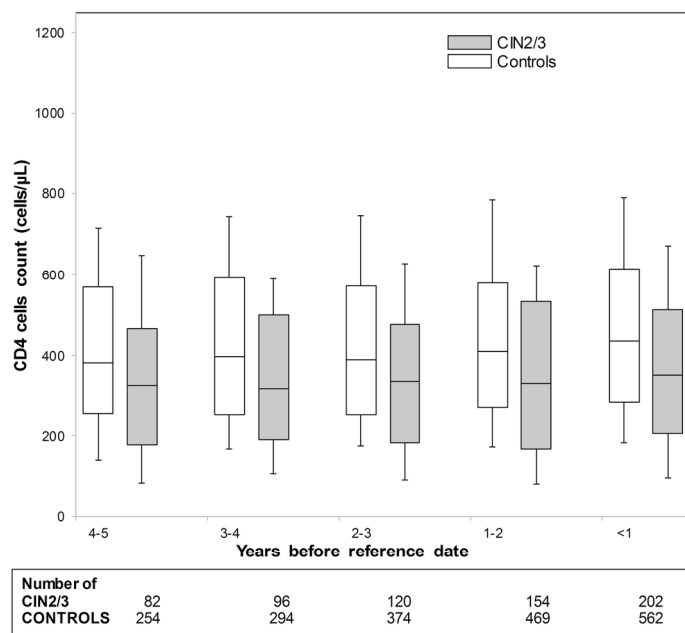


Figure 1. Box plots of CD4+ cell counts at yearly intervals prior to reference date, among cervical intra-epithelial neoplasia 2/3 and controls, stratified by A) never cART users and B) ever cART users. The Swiss HIV Cohort Study, 1985-2013. Abbreviations: CIN2/3 = cervical intra-epithelial grade 2/3; cART = combined antiretroviral therapy. Figure 1 B) Ever cART users.  
168x109mm (300 x 300 DPI)

Accept

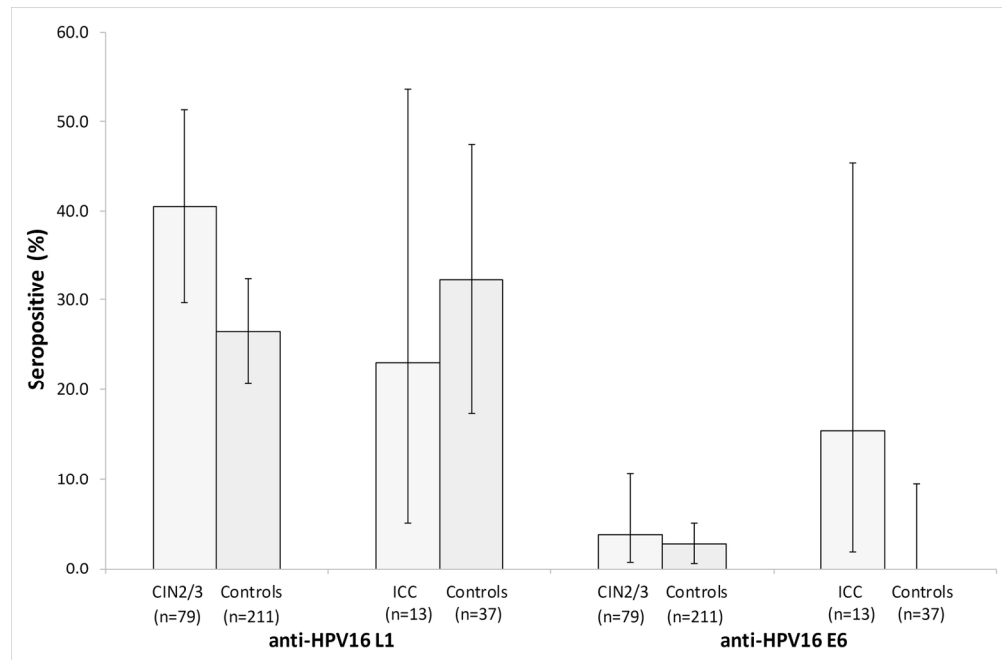


Figure 2. Seropositivity for HPV16 antibodies among cervical intra-epithelial neoplasia 2/3, invasive cervical cancer and corresponding controls. The Swiss HIV Cohort Study, 1985-2013.\* Significantly different from corresponding controls in conditional logistic regression model. Abbreviations: HPV = human papillomavirus; CIN2/3 = cervical intra-epithelial grade 2/3; ICC = invasive cervical cancer.  
152x99mm (300 x 300 DPI)

Accept