



Functional equations and the Cauchy mean value theorem

ZOLTÁN M. BALOGH, ORIF O. IBROGIMOV AND BORIS S. MITYAGIN

Dedicated to Professor Jürg Rätz

Abstract. The aim of this note is to characterize all pairs of sufficiently smooth functions for which the mean value in the Cauchy mean value theorem is taken at a point which has a well-determined position in the interval. As an application of this result, a partial answer is given to a question posed by Sahoo and Riedel.

Mathematics Subject Classification. 39B22.

Keywords. Mean value theorem, Functional equations.

1. Introduction

Given two differentiable functions $F, G : \mathbb{R} \rightarrow \mathbb{R}$, the Cauchy mean value theorem (MVT) states that for any interval $[a, b] \subset \mathbb{R}$, where $a < b$, there exists a point c in (a, b) such that

$$[F(b) - F(a)]g(c) = [G(b) - G(a)]f(c). \quad (1)$$

Here, and in the rest of the paper we will use the “lower case” notations for the derivatives $f = F'$ and $g = G'$. A particular situation is the Lagrange MVT when $G(x) = x$ is the identity function, in which case (1) reads as

$$F(b) - F(a) = f(c)(b - a). \quad (2)$$

The problem to be investigated in this note can be formulated as follows.

Problem 1. Find all pairs (F, G) of differentiable functions $F, G : \mathbb{R} \rightarrow \mathbb{R}$ satisfying the following equation

$$[F(b) - F(a)]g(\alpha a + \beta b) = [G(b) - G(a)]f(\alpha a + \beta b) \quad (3)$$

for all $a, b \in \mathbb{R}$, where $f = F'$, $g = G'$, $\alpha, \beta \in (0, 1)$ are fixed and $\alpha + \beta = 1$.

The authors were supported by the Swiss National Science Foundation, SNF, Grant No. 200020_146477.

For the case of the Lagrange MVT with $c = \frac{a+b}{2}$, this problem was considered first by Haruki [5] and independently by Áczél [1], proving that the quadratic functions are the only solutions to (2). This problem can serve as a starting point for various functional equations [9]. More general functional equations have been considered even in the abstract setting of groups by several authors including Kannappan [6], Ebanks [3], Fechner-Gselmann [4]. On the other hand, the result of Áczél and Haruki has been generalized for higher order Taylor expansion by Sablik [8].

For the more general case of the Cauchy MVT much less is known. We mention Aumann [2] illustrating the geometrical significance of this equation and the recent contribution of Páles [7] providing the solution of a related equation under additional assumptions. In this note we provide a different approach to the Cauchy MVT. As it will turn out, the most challenging situation corresponds to $c = \frac{a+b}{2}$ in which case our main result is the following:

Theorem 2. *Assume that $F, G : \mathbb{R} \rightarrow \mathbb{R}$ are three times differentiable functions with derivatives $F' = f$, $G' = g$ such that*

$$[F(b) - F(a)]g\left(\frac{a+b}{2}\right) = [G(b) - G(a)]f\left(\frac{a+b}{2}\right) \quad (4)$$

for all $a, b \in \mathbb{R}$. Then one of the following possibilities holds:

- (a) $\{1, F, G\}$ are linearly dependent on \mathbb{R} ;
- (b) $F, G \in \text{span}\{1, x, x^2\}$, $x \in \mathbb{R}$;
- (c) there exists a non-zero real number μ such that

$$F, G \in \text{span}\{1, e^{\mu x}, e^{-\mu x}\}, \quad x \in \mathbb{R};$$

- (d) there exists a non-zero real number μ such that

$$F, G \in \text{span}\{1, \sin(\mu x), \cos(\mu x)\}, \quad x \in \mathbb{R}.$$

The paper is organized as follows. In Sect. 2 we consider the problem first for the known case of the Lagrange MVT as an illustration of our method. In Sect. 3 we provide a preliminary result that will allow passing local information to a global one about the pairs of differentiable functions (F, G) satisfying (3). In Sects. 4, 5 we consider the asymmetric ($\alpha \neq \beta$) and symmetric ($\alpha = \beta = 1/2$) cases, respectively. Section 6 is for final remarks. Here we also provide a partial result to an open problem by Sahoo and Riedel which corresponds to a more general version of (3).

2. The Lagrange MVT with fixed mean value

Note that every $c \in (a, b)$ can be written uniquely as $c = \alpha a + \beta b$ for some $\alpha, \beta \in (0, 1)$ with $\alpha + \beta = 1$. It is easy to check that (2) holds for all $a, b \in \mathbb{R}$ with fixed $\alpha \neq 1/2$ if F is a linear function, and with $\alpha = 1/2$ if F is a

quadratic function. We claim that the converse of this statement is also true. As mentioned earlier, there are various proofs of the latter in the literature, see for example [1, 5, 9]. Nevertheless, we give here a short and self-contained argument mainly to illustrate our approach to the more general case of the Cauchy MVT.

Proposition 3. *Let $\alpha \in (0, 1)$ be fixed and $\beta = 1 - \alpha$. Assume that $F : \mathbb{R} \rightarrow \mathbb{R}$ is a continuously differentiable function with $F' = f$ such that*

$$F(b) - F(a) = f(\alpha b + \beta a)(b - a) \quad \text{for all } a, b \in \mathbb{R} \quad \text{with } a < b. \quad (5)$$

Then the following statements hold:

1. if $\alpha \neq 1/2$ then F is a linear function;
2. if $\alpha = 1/2$ then F is a quadratic function.

Proof. Let us put $\alpha b + \beta a = x$ and $b - a = h$. Then (5) reads as

$$F(x + \beta h) - F(x - \alpha h) = f(x) h \quad \text{for all } x \in \mathbb{R}, h > 0. \quad (6)$$

From this equation it is apparent that $f = F'$ is differentiable as a linear combination of two differentiable functions and thus F is twice differentiable. By induction, it follows that F is infinitely differentiable.

Differentiating (6) with respect to h , we obtain the relation

$$\beta f(x + \beta h) + \alpha f(x - \alpha h) = f(x), \quad x \in \mathbb{R}, h > 0. \quad (7)$$

Again, we differentiate (7) with respect to h and find that

$$\beta^2 f'(x + \beta h) - \alpha^2 f'(x - \alpha h) = 0, \quad x \in \mathbb{R}, h > 0.$$

Since f' is continuous, letting $h \searrow 0$, we obtain

$$(\beta^2 - \alpha^2) f'(x) = (1 - 2\alpha) f'(x) = 0 \quad \text{for all } x \in \mathbb{R}.$$

If $\alpha \neq 1/2$, this implies that $f' = 0$ identically. Therefore f is constant and thus F is a linear function, proving the first statement.

If $\alpha = 1/2$, then (7) reads as

$$f\left(x + \frac{h}{2}\right) + f\left(x - \frac{h}{2}\right) = 2f(x), \quad x \in \mathbb{R}, h > 0,$$

and twice differentiation with respect to h leads to

$$f''\left(x + \frac{h}{2}\right) + f''\left(x - \frac{h}{2}\right) = 0, \quad x \in \mathbb{R}, h > 0.$$

Now letting $h \searrow 0$, we get $f''(x) = 0$ for all $x \in \mathbb{R}$, so f is linear and F is a quadratic function, proving the second statement. \square

3. The Cauchy MVT with fixed mean value

Let us introduce the sets

$$U_f := \{x \in \mathbb{R} : f(x) \neq 0\}, \quad U_g := \{x \in \mathbb{R} : g(x) \neq 0\}, \quad (8)$$

and also their complements $Z_f := \mathbb{R} \setminus U_f$ and $Z_g := \mathbb{R} \setminus U_g$. Observe that if U_g is empty, i.e. G is constant on \mathbb{R} , then (3) holds for trivial reasons (both sides are identically zero) for an arbitrary differentiable function F . Of course, we can change the roles of G and F and claim: if F is constant then (3) holds for any differentiable function G . Assume therefore that $U_g \neq \emptyset$. Then there is a sequence of mutually disjoint open intervals $\{I_\sigma\}_{\sigma \in \Sigma}$, $\Sigma \subset \mathbb{N}$, such that

$$U_g = \bigcup_{\sigma \in \Sigma} I_\sigma. \quad (9)$$

Proposition 4. *If $U_g \neq \emptyset$ and $U_f \cap U_g = \emptyset$, then $U_f = \emptyset$, i.e. $f \equiv 0$ on \mathbb{R} and thus F is constant.*

Proof. By assumption, there is a non-empty interval $(p, q) \subset U_g$ such that $g(x) \neq 0$ on (p, q) , but $f(x) = 0$ for all $x \in [p, q]$. Then with the changing of variables $h = b - a$, $x = \alpha a + \beta b$, (3) yields

$$F(x + \alpha h) - F(x - \beta h) = 0 \quad \text{for all } x \in (p, q), h > 0. \quad (10)$$

Denoting $x + \alpha h$ by y for $x \in [p, q]$ and $h > 0$, we get $F(y) - F(y - h) = 0$ if (h, y) lies within the semi-strip (cf. Fig. 1)

$$L := \{(h, y) : h > 0, p + \alpha h < y < q + \alpha h\}.$$

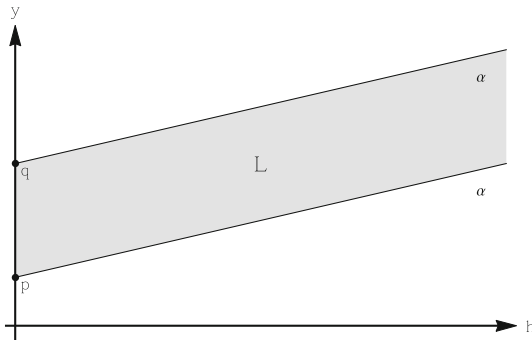


FIGURE 1. The semi-strip L

Then, for $y > p$ choosing $h > 0$ such that $(h, y) \in L$, we have

$$\begin{aligned} \frac{\partial}{\partial y} F(y) &= \frac{\partial}{\partial y} F(y - h) = -\frac{\partial}{\partial h} F(y - h) \\ &= -\frac{\partial}{\partial h} F(y) = 0, \end{aligned}$$

so $F(y)$ is a constant, say $F(y) = F\left(\frac{p+q}{2}\right)$ for $y > p$. However, by (10), we have $F(q + \alpha h) = F(q - \beta h)$ and thus $F(y)$ is the same constant for all $y < q$. Therefore, $f(y) = F'(y) = 0$ for all $y \in \mathbb{R}$. \square

Proposition 4 shows that the condition $U_f \cap U_g = \emptyset$ holds only if at least one of the sets U_f and U_g is empty. Then we have the simple cases described in the beginning of the section.

Proposition 5. *Let (F, G) be a solution of the Problem 1 satisfying*

$$U_f \cap U_g \neq \emptyset, \quad (11)$$

and consider the representation (9). If $\{F, G, 1\}$ are linearly dependent as functions on I_σ for every $\sigma \in \Sigma$, then $\{F, G, 1\}$ are linearly dependent on \mathbb{R} .

Proof. For $\sigma_1, \sigma_2 \in \Sigma$ with $\sigma_1 \neq \sigma_2$, consider the intervals $I_{\sigma_1} := (p_1, q_1)$, $I_{\sigma_2} := (p_2, q_2)$ with

$$p_1 < q_1 \leq p_2 < q_2, \quad (12)$$

and assume that $\{F, G, 1\}$ are linearly dependent on I_{σ_1} and I_{σ_2} . Then it follows that there are constants $A_1, A_2, B_1, B_2 \in \mathbb{R}$ such that

$$F(x) = A_1 G(x) + B_1, \quad x \in I_{\sigma_1}, \quad (13)$$

$$= A_2 G(x) + B_2, \quad x \in I_{\sigma_2}. \quad (14)$$

With the changing of variables $h = b - a$, $x = \alpha a + \beta b$, (3) yields

$$[F(x + \alpha h) - F(x - \beta h)] g(x) = [G(x + \alpha h) - G(x - \beta h)] f(x)$$

for all $x \in \mathbb{R}$ and $h > 0$. Since $f(x) = A_2 g(x)$ if $x \in I_{\sigma_2}$ by (14) and $g(x) \neq 0$ for $x \in I_{\sigma_2}$, we have, for all $x \in I_{\sigma_2}, h > 0$

$$F(x + \alpha h) - F(x - \beta h) = A_2 [G(x + \alpha h) - G(x - \beta h)], \quad x \in I_{\sigma_2}, h > 0. \quad (15)$$

If at the same time $x - \beta h \in I_{\sigma_1}$, then $F(x - \beta h) = A_1 G(x - \beta h) + B_1$ by (13). Inserting this value into (15), we obtain

$$F(x + \alpha h) = A_2 G(x + \alpha h) + (A_1 - A_2) G(x - \beta h) + B_1 \quad (16)$$

for

$$x \in I_{\sigma_2}, \quad x - \beta h \in I_{\sigma_1}, \quad h > 0. \quad (17)$$

Put $y = x + \alpha h$, then $x - \beta h = y - h$, and (17) means that (h, y) lies within the parallelogram (cf. Fig. 2)

$$\Pi := \{(h, y) : p_2 + \alpha h < y < q_2 + \alpha h, p_1 + h < y < q_1 + h\}.$$

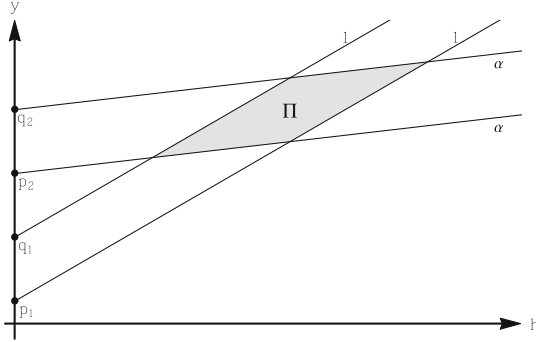


FIGURE 2. The parallelogram Π

Since $\beta \in (0, 1)$, (12) guarantees that $\Pi \neq \emptyset$, and (16) implies

$$F(y) = A_2G(y) + (A_1 - A_2)G(y - h) + B_1 \quad \text{for all } (h, y) \in \Pi.$$

Therefore, at any point of Π , we have

$$0 = \frac{\partial}{\partial h}F(y) = -(A_1 - A_2)G'(y - h) = (A_2 - A_1)g(y - h).$$

But $y - h \in I_{\sigma_1}$ by (17), so $g(y - h) \neq 0$ and thus

$$A_2 - A_1 = 0. \tag{18}$$

So far our analysis says nothing about B_1, B_2 in (13), (14) but since $\sigma_1, \sigma_2 \in \Sigma$ were arbitrary, (18) together with (13) and (14) imply

$$f(x) = Ag(x) \quad \text{for some constant } A \in \mathbb{R} \quad \text{and all } x \in U_g. \tag{19}$$

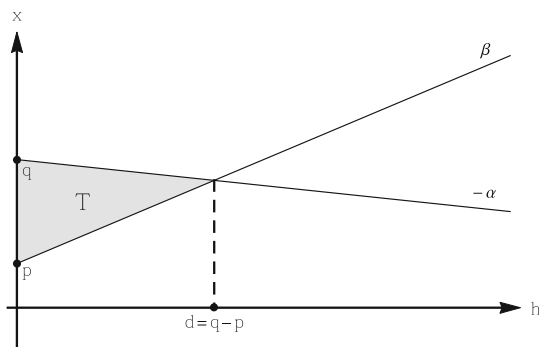
On the other hand, by changing the roles of F and G in the above analysis, we come to the conclusion that

$$g(x) = Kf(x) \quad \text{for some constant } K \in \mathbb{R} \quad \text{and all } x \in U_f. \tag{20}$$

By (11) there is a point $x_0 \in U_g \cap U_f$ so $AK = 1$ and these coefficients are not zero. But then (19) implies $U_g \subset U_f$ and (20) implies $U_f \subset U_g$; therefore, $U_g = U_f$ and $Z_g = Z_f$. The latter means that

$$f(x) = Ag(x), \quad g(x) = Kf(x) \quad \text{if } x \in Z_g = Z_f$$

by trivial reasons (all these values are zeros) so with (19) and (20) these identities are valid on the entire $\mathbb{R} = U_f \cup Z_f = U_g \cup Z_g$. In particular, it follows that $\{F, G, 1\}$ are linearly dependent on \mathbb{R} . \square


 FIGURE 3. The triangle T

4. The Cauchy MVT with fixed asymmetric mean value

In this section we consider the asymmetric case, i.e. in (3) we take

$$\alpha, \beta \in (0, 1) \quad \text{with} \quad \alpha \neq 1/2 \quad \text{and} \quad \beta = 1 - \alpha. \quad (21)$$

The following proposition describes all pairs (F, G) of two times continuously differentiable functions satisfying (3) under the assumption (21) on α, β in the intervals where $g = G'$ does not vanish.

Proposition 6. *Let (F, G) be a solution of the Problem 1 with α, β satisfying (21) and $I = (p, q)$, $-\infty \leq p < q \leq +\infty$, be an interval where the derivative $g(x)$ does not vanish. If F, G are twice continuously differentiable on I , then $\{F, G, 1\}$ are linearly dependent on I .*

Proof. With the changing of variables $h = b - a$, $x = \alpha a + \beta b$, (3) yields

$$[F(x + \alpha h) - F(x - \beta h)]g(x) = [G(x + \alpha h) - G(x - \beta h)]f(x) \quad (22)$$

if $x \in I$ and $h > 0$ are such that $x + \alpha h, x - \beta h \in I$. The latter condition yields that (22) holds if (h, x) lies within the open triangle (cf. Fig. 3)

$$T := \{(h, x) : 0 < h < q - p, p + \beta h < x < q - \alpha h\}. \quad (23)$$

By differentiating both sides of (22) with respect to h twice, we obtain the following relation in T

$$[\alpha^2 f'(x + \alpha h) - \beta^2 f'(x - \beta h)]g(x) = [\alpha^2 g(x + \alpha h) - \beta^2 g'(x - \beta h)]f(x).$$

All the functions are continuous so the latter holds on the closure \bar{T} as well, in particular, on the interval $\{h = 0, p < x < q\}$. Therefore, with $\beta^2 - \alpha^2 = 1 - 2\alpha \neq 0$ by (21), we get $f'(x)g(x) = g'(x)f(x)$ for all $x \in I = (p, q)$. We can divide both sides by $g^2(x)$ and conclude that $(f/g)' = 0$ on I . This implies that $f/g = A$ for some constant $A \in \mathbb{R}$, and $F'(x) = f(x) = Ag(x) = AG'(x)$, $x \in I$. After integration we get $F(x) = AG(x) + B(x)$, $x \in I$. \square

The following theorem is the main result of this section.

Theorem 7. *Let (F, G) be a solution of the Problem 1 with α, β satisfying (21). If F, G are twice continuously differentiable on \mathbb{R} , then $\{F, G, 1\}$ are linearly dependent on \mathbb{R} , i.e. there exist constants $A, B, C \in \mathbb{R}$ such that not all of them are zeroes and*

$$AF(x) + BG(x) + C = 0 \quad \text{for all } x \in \mathbb{R}. \tag{24}$$

Proof. Consider the following cases:

Case 1: $U_g = \emptyset$.

In this case G is a constant on \mathbb{R} and (3) holds for any differentiable function F . Hence (24) holds, for example, with $A = 0, B = 1, C = -G$ and thus $\{F, G, 1\}$ are linearly dependent on \mathbb{R} .

Case 2: $U_g \neq \emptyset$ but $U_g \cap U_f = \emptyset$.

In this case Proposition 4 yields that F is a constant on \mathbb{R} and (3) holds for any differentiable function G . Hence (24) holds, for example, with $A = 1, B = 0, C = -F$ and thus $\{F, G, 1\}$ are again linearly dependent on \mathbb{R} .

Case 3: $U_g \cap U_f \neq \emptyset$.

In this case Propositions 5 and 6 immediately imply that $\{F, G, 1\}$ are linearly dependent on \mathbb{R} . □

5. The Cauchy MVT with symmetric mean value

In this section we consider the problem of describing all pairs (F, G) of smooth functions for which the mean value in (3) is taken at the midpoint of the interval. Our first result gives a necessary (and also sufficient in case $\{1, F, G\}$ are not linearly dependent) condition on such pairs in the intervals where $g = G'$ does not vanish.

Proposition 8. *Assume that $F, G : \mathbb{R} \rightarrow \mathbb{R}$ are three times differentiable functions with derivatives $F' = f, G' = g$. Let $I \subset \mathbb{R}$ be such an interval that $g \neq 0$ for all $x \in I$ and (4) holds for all $a, b \in I$. Then there exist constants $A, K \in \mathbb{R}$ and $x_0 \in I$ such that*

$$f(x) = \left(A + K \int_{x_0}^x \frac{dt}{g^2(t)} \right) g(x) \quad \text{for all } x \in I. \tag{25}$$

Moreover, if (25) holds with $K \neq 0$, then (4) holds if and only if

$$\int_{x-h}^{x+h} g(t) \left(\int_{x_0}^t \frac{du}{g^2(u)} \right) dt = \left(\int_{x-h}^{x+h} g(t) dt \right) \left(\int_{x_0}^x \frac{du}{g^2(u)} \right) \tag{26}$$

for all $x, h \in \mathbb{R}$ such that $x, x+h, x-h \in I$.

Proof. With the changing of variables $x = \frac{a+b}{2}$, $h = \frac{b-a}{2}$, we can rewrite (4) as

$$[F(x+h) - F(x-h)]g(x) = [G(x+h) - G(x-h)]f(x) \quad (27)$$

for all $x, h \in \mathbb{R}$ with the property that $x, x+h, x-h \in I$. By differentiating this equality three times with respect to h , we get

$$[f''(x+h) + f''(x-h)]g(x) = [g''(x+h) + g''(x-h)]f(x).$$

Setting $h = 0$, we obtain

$$0 = f''(x)g(x) - f(x)g''(x) = (f'(x)g(x) - f(x)g'(x))' \quad \text{for all } x \in I,$$

and thus $f'(x)g(x) - f(x)g'(x) = K$ for some constant K . Then $(\frac{f}{g}(x))' = \frac{K}{g^2(x)}$, $x \in I$, and integration over (x_0, x) with any $x_0 \in I$ yields (25).

Now assume (25) holds with a nonzero constant K . Then we have

$$\begin{aligned} F(x+h) - F(x-h) &= \int_{x-h}^{x+h} f(t)dt \\ &= \int_{x-h}^{x+h} \left(A + K \int_{x_0}^t \frac{du}{g^2(u)} \right) g(t)dt \\ &= A \int_{x-h}^{x+h} g(t)dt + K \int_{x-h}^{x+h} g(t) \left(\int_{x_0}^t \frac{du}{g^2(u)} \right) dt \end{aligned}$$

and

$$\begin{aligned} [G(x+h) - G(x-h)]\frac{f(x)}{g(x)} &= \left(\int_{x-h}^{x+h} g(t)dt \right) \left(A + K \int_{x_0}^x \frac{du}{g^2(u)} \right) \\ &= A \int_{x-h}^{x+h} g(t)dt + K \left(\int_{x-h}^{x+h} g(t)dt \right) \left(\int_{x_0}^x \frac{du}{g^2(u)} \right). \end{aligned}$$

By comparing the last two relations, it is easy to see that (26) is equivalent to (4). \square

The following example illustrates that there are non-trivial functions satisfying (26) (and hence (4)) on \mathbb{R} .

Example 9. Consider $g(t) = e^t$ on $I = \mathbb{R}$ and let $A = 0, K = 1, x_0 = 0$. The integral condition (26) reads as the following identity

$$\int_{x-h}^{x+h} e^t \left(\int_0^t e^{-2u} du \right) dt = \left(\int_{x-h}^{x+h} e^t dt \right) \left(\int_0^x e^{-2u} du \right).$$

A direct computation gives $f(x) = \sinh(x) = \frac{e^x - e^{-x}}{2}$, and consequently,

$$F(x) = \cosh(x) = \frac{e^x + e^{-x}}{2}, \quad G(x) = e^x, \quad x \in \mathbb{R}. \quad (28)$$

We invite the interested reader to verify directly that the pair (F, G) in (28) satisfies the relation (4), giving a non-trivial example of such pairs.

Now we assume that $K \neq 0$ and analyze the property (26) for all $x, h \in \mathbb{R}$ such that $x, x+h, x-h \in I$. Differentiating it with respect to h , we obtain

$$g(x+h) \int_{x_0}^{x+h} \frac{du}{g^2(u)} + g(x-h) \int_{x_0}^{x-h} \frac{du}{g^2(u)} = [g(x+h) + g(x-h)] \int_{x_0}^x \frac{du}{g^2(u)}.$$

Differentiation two more times with respect to h gives

$$g''(x+h) \int_{x_0}^{x+h} \frac{du}{g^2(u)} + g''(x-h) \int_{x_0}^{x-h} \frac{du}{g^2(u)} = [g''(x+h) + g''(x-h)] \int_{x_0}^x \frac{du}{g^2(u)},$$

for all $x \in I$ and $h \in \mathbb{R}$ such that $x, x+h, x-h \in I$. Setting $h = x - x_0$ in these two equations, we obtain

$$g(2x - x_0) \int_{x_0}^{2x-x_0} \frac{du}{g^2(u)} = [g(2x - x_0) + g(x_0)] \int_{x_0}^x \frac{du}{g^2(u)}, \tag{29}$$

and

$$g''(2x - x_0) \int_{x_0}^{2x-x_0} \frac{du}{g^2(u)} = [g''(2x - x_0) + g''(x_0)] \int_{x_0}^x \frac{du}{g^2(u)}, \tag{30}$$

for all $x \in I$ with $2x - x_0 \in I$. Since $2x - x_0 \in I$ and g has no zeros in I , both sides of (29) do not vanish. By comparing (30) and (29), we get

$$\frac{g''(2x - x_0)}{g(2x - x_0)} = \frac{g''(2x - x_0) + g''(x_0)}{g(2x - x_0) + g(x_0)} \tag{31}$$

for all $x \in I$ such that $2x - x_0 \in I$. Putting $y(x) := g(2x - x_0)$ and $\lambda := \frac{4g''(x_0)}{g(x_0)}$, (31) yields the second order differential equation $y'' - \lambda y = 0$, whose general real-valued solution (depending on the sign of λ), has the following form

$$\begin{aligned} g(x) &= Px + Q, & \text{if } \lambda &= 0; \\ g(x) &= Pe^{\sqrt{\lambda}x} + Qe^{-\sqrt{\lambda}x} & \text{if } \lambda &= \mu^2, \mu > 0; \\ g(x) &= P \sin(\sqrt{-\lambda}x) + Q \cos(\sqrt{-\lambda}x) & \text{if } \lambda &= -\mu^2, \mu > 0, \end{aligned}$$

where P, Q are real constants. Hence G has one of the following forms

$$G(x) = Ax^2 + Bx + C, \tag{32}$$

$$G(x) = Ae^{\mu x} + Be^{-\mu x} + C, \quad \mu > 0, \tag{33}$$

$$G(x) = A \sin(\mu x) + B \cos(\mu x) + C, \quad \mu > 0, \tag{34}$$

where A, B, C are real constants.

Remark 10. Altogether, we come to the following conclusion: on every interval $I \subset \mathbb{R}$ on which $G' \neq 0$, either $\{F, G, 1\}$ are linearly dependent, or G and thus also F , cf. (25), has one of the forms described in (32)–(34).

In the sequel, we call a function G (resp. the pair (F, G)) to be of *quadratic*, *exponential* or *trigonometric type* on I if G has (resp. both of F and G have) the form (32), (33) or (34), respectively.

Consider the set U_g and its representation, cf. (8), (9). The following lemma plays a crucial role in the analysis of the equation (4).

Lemma 11. *Let $(p, q) \in \{I_\sigma\}_{\sigma \in \Sigma}$ be such that $p > -\infty$ and $f(p) = 0$. Then $\{F, G, 1\}$ are linearly dependent on $[p, q]$.*

Proof. $g(p) = 0$ by (9) so by Remark 10, it is sufficient to consider the following cases.

Case 1: G is of quadratic type on (p, q) .

Then F is also of quadratic type on (p, q) , and since $f(p) = g(p) = 0$, we have $F, G \in \text{span}\{1, (x-p)^2\}$. Thus $\{F, G, 1\}$ are linearly dependent on (p, q) .

Case 2: G is of either exponential or trigonometric type on (p, q) .

First suppose that G is of exponential type on (p, q) . Then so is F and since the set of functions satisfying (4) is invariant with respect to the addition of constant functions, we can assume, without loss of generality, that $F, G \in \text{span}\{e^{\mu(x-p)}, e^{-\mu(x-p)}\}$ for some $\mu \neq 0$. Hence there are real constants u, v such that $F(x) = ue^{\mu(x-p)} + ve^{-\mu(x-p)}$, $x \in (p, q)$. Since $F'(p) = f(p) = 0$, we get $u = v$ and thus $F(x) = 2u \cosh(\mu(x-p))$. The same argument for G explains that $G(x) = 2w \cosh(\mu(x-p))$ for some real w , and consequently F and G are multiples of the same function $\cosh(\mu(x-p))$.

If G is of trigonometric type, then in the same way as above, we can conclude that F and G are multiples of the same function $\cos(\mu(x-p))$, implying that $\{F, G, 1\}$ are linearly dependent on $[p, q]$. \square

Proof of Theorem 2. Consider the set U_g defined in (8). If $U_g = \emptyset$, then $g \equiv 0$ on \mathbb{R} , and thus G is identically constant on \mathbb{R} . In this case F can be an arbitrary differentiable function on \mathbb{R} and thus $\{1, F, G\}$ are linearly dependent on \mathbb{R} . If $U_g = \mathbb{R}$, then it follows (cf. Remark 10) that either $\{1, F, G\}$ are linearly dependent or G has one of the forms (32)–(34) on the whole of \mathbb{R} . Moreover, we get the same conclusion if $U_g \cap U_f = \emptyset$ (cf. Proposition 4).

Next, let us assume that $U_g \cap U_f \neq \emptyset$ and U_g is a proper subset of \mathbb{R} . Consider the representation (9). It is clear (cf. Remark 10) that the index set Σ can be split into disjoint subsets as $\Sigma = \Sigma_{\text{lr}} \cup \Sigma_{\text{q}} \cup \Sigma_{\text{t}} \cup \Sigma_{\text{e}}$, where

$$\begin{aligned} \Sigma_{\text{lr}} &:= \{\sigma \in \Sigma : \{F, G, 1\} \text{ are in linear relationship on } I_\sigma\}, \\ \Sigma_{\text{q}} &:= \{\sigma \in \Sigma : (F, G) \text{ are of quadratic type on } I_\sigma\}, \\ \Sigma_{\text{t}} &:= \{\sigma \in \Sigma : (F, G) \text{ are of trigonometric type on } I_\sigma\}, \\ \Sigma_{\text{e}} &:= \{\sigma \in \Sigma : (F, G) \text{ are of exponential type on } I_\sigma\}. \end{aligned}$$

Claim 1. *If $\Sigma_{\text{lr}} \neq \emptyset$, then $\Sigma_{\text{lr}} = \Sigma$.*

Proof. Assume Σ_{lr} is a proper subset of Σ . Then there exists $\sigma_2 \in \Sigma$ such that $\sigma_2 \notin \Sigma_{\text{lr}}$. Since $\Sigma_{\text{lr}} \neq \emptyset$, there is $\sigma_1 \in \Sigma_{\text{lr}}$ and $A_1 \in \mathbb{R}$ such that $f(x) = A_1 g(x)$ on $x \in I_{\sigma_1}$. Consider all $x, h \in \mathbb{R}$ such that $x + h \in I_{\sigma_2}$ and $x \in I_{\sigma_1}$. Using (4) for $a = x - h$ and $b = x + h$, and recalling that $g \neq 0$ on I_{σ_1} , we get

$$F(x + h) - A_1 G(x + h) = F(x - h) - A_1 G(x - h). \quad (35)$$

Therefore,

$$\begin{aligned} f(x + h) - A_1 g(x + h) &= \frac{1}{2} \left(\frac{\partial}{\partial x} + \frac{\partial}{\partial h} \right) F(x + h) - \frac{A_1}{2} \left(\frac{\partial}{\partial x} + \frac{\partial}{\partial h} \right) G(x + h) \\ &= \frac{1}{2} \left(\frac{\partial}{\partial x} + \frac{\partial}{\partial h} \right) (F(x - h) - A_1 G(x - h)) \\ &= 0, \end{aligned}$$

and thus $f(x + h) = A_1 g(x + h)$ for all $x, h \in \mathbb{R}$ such that $x + h \in I_{\sigma_2}$ and $x \in I_{\sigma_1}$. From this it follows that F and G are in linear relationship on I_{σ_2} , that is, $\sigma_2 \in \Sigma_{\text{lr}}$, which leads to a contradiction. \square

Claim 2. *If $\Sigma_{\text{lr}} = \emptyset$, then only one of the index sets $\Sigma_q, \Sigma_t, \Sigma_e$ is non-empty.*

Proof. Let $\sigma \in \Sigma$ and $I_\sigma = (p, q)$. Since U_g is a proper subset of \mathbb{R} , one of p, q is finite. We can assume $p > -\infty$. Then $g(p) = 0$, and Lemma 11 yields $f(p) \neq 0$. Hence using (4) for $a = p - h$ and $b = p + h$ we get

$$G(p + h) = G(p - h) \quad \text{for all } h \in \mathbb{R}, \quad (36)$$

so the graph of G is symmetric with respect to the vertical line $y = p$.

If $\sigma \in \Sigma_q$ or $\sigma \in \Sigma_e$, then $q = +\infty$ since the functions of quadratic type have exactly one and the functions of exponential type have at most one critical point. Therefore, if $\sigma \in \Sigma_q$, then $G \in \text{span}\{1, (x - p)^2\}$, $x \in \mathbb{R}$ and $\Sigma = \Sigma_q$. Similarly, it follows from (36) that if $\sigma \in \Sigma_e$, then $\Sigma = \Sigma_e$.

Next, assume $\Sigma_{\text{lr}} = \Sigma_q = \Sigma_e = \emptyset$. Then $\Sigma = \Sigma_t$ and let $\sigma \in \Sigma_t$. Since G is of trigonometric type on $I_\sigma = (p, q)$, we must have $q < +\infty$. So $g(p) = g(q) = 0$ and it follows as in the proof of Lemma 11 that there are real constants u, v such that

$$G(x) = u + v \cos\left(\pi \frac{x - p}{q - p}\right), \quad x \in (p, q). \quad (37)$$

Using (36) we obtain that (37) holds on the whole of \mathbb{R} . \square

Since $U_g \neq \emptyset$, at least one of $\Sigma_{\text{lr}}, \Sigma_q, \Sigma_t, \Sigma_e$ is non-empty. If $\Sigma_{\text{lr}} \neq \emptyset$, then Claim 1 and Proposition 5 imply that $\{F, G, 1\}$ are linearly dependent on \mathbb{R} . If $\Sigma_{\text{lr}} = \emptyset$, then Claim 2 yields that one of the possibilities (b)–(d) holds. \square

6. Final remarks

As a consequence of our main result we can give a partial answer to the following still open question of Sahoo and Riedel (cf. [9, Section 2.7] for an equivalent formulation).

Problem. Find all functions $F, G, \phi, \psi : \mathbb{R} \rightarrow \mathbb{R}$ satisfying

$$[F(x) - F(y)] \phi\left(\frac{x+y}{2}\right) = [G(x) - G(y)] \psi\left(\frac{x+y}{2}\right) \quad (38)$$

for all $x, y \in \mathbb{R}$.

We provide a partial solution to this problem under certain assumptions on the unknown functions. First let us change the variables $s = \frac{x+y}{2}$, $t = \frac{x-y}{2}$ and write (38) equivalently as

$$[F(s+t) - F(s-t)] \phi(s) = [G(s+t) - G(s-t)] \psi(s), \quad s, t \in \mathbb{R}. \quad (39)$$

Theorem 12. Let $F, G : \mathbb{R} \rightarrow \mathbb{R}$ be three times differentiable and $\phi, \psi : \mathbb{R} \rightarrow \mathbb{R}$ be arbitrary functions satisfying (39) on \mathbb{R} . If either $\phi \neq 0$ or $\psi \neq 0$ on \mathbb{R} , then one of the following possibilities holds:

- (a) there exist constants $A_0, A_1, A_2 \in \mathbb{R}$ such that for all $s \in \mathbb{R}$, we have $A_0 + A_1 F(s) + A_2 G(s) = 0$ and $G'(s) [A_1 \psi(s) + A_2 \phi(s)] = 0$;
- (b) there exist constants $A_0, A_1, A_2, B_0, B_1, B_2 \in \mathbb{R}$ such that for all $s \in \mathbb{R}$, we have $F(s) = A_0 + A_1 s^2 + A_2 s^2$, $G(s) = B_0 + B_1 s + B_2 s^2$ and

$$(A_1 + 2A_2 s) \phi(s) = (B_1 + 2B_2 s) \psi(s);$$

- (c) there exists $\mu \neq 0$ and constants $A_0, A_1, A_2, B_0, B_1, B_2 \in \mathbb{R}$ such that for all $s \in \mathbb{R}$, we have $F(s) = A_0 + A_1 e^{\mu s} + A_2 e^{-\mu s}$, $G(s) = B_0 + B_1 e^{\mu s} + B_2 e^{-\mu s}$ and

$$(A_1 e^{\mu s} - A_2 e^{-\mu s}) \phi(s) = (B_1 e^{\mu s} - B_2 e^{-\mu s}) \psi(s);$$

- (d) there exists $\mu \neq 0$ and constants $A_0, A_1, A_2, B_0, B_1, B_2 \in \mathbb{R}$ such that for all $s \in \mathbb{R}$, we have $F(s) = A_0 + A_1 \sin(\mu s) + A_2 \cos(\mu s)$, $G(s) = B_0 + B_1 \sin(\mu s) + B_2 \cos(\mu s)$ and

$$[A_1 \cos(\mu s) - A_2 \sin(\mu s)] \phi(s) = [B_1 \cos(\mu s) - B_2 \sin(\mu s)] \psi(s).$$

Proof. Let f, g be the derivatives of F, G , respectively and the sets U_g, U_f (resp. Z_g, Z_f) be defined as in Sect. 3. Without loss of generality, assume that ϕ does not vanish on \mathbb{R} . By differentiating (39) with respect to t and setting $t = 0$ in the resulting equation, we get

$$f(s) \phi(s) = g(s) \psi(s), \quad s \in \mathbb{R}. \quad (40)$$

For any $s \in U_g$ and $t \in \mathbb{R}$, by (39) and (40), we have

$$\begin{aligned} F(s+t) - F(s-t) &= [G(s+t) - G(s-t)] \frac{\psi(s)}{\phi(s)} \\ &= [G(s+t) - G(s-t)] \frac{f(s)}{g(s)}, \end{aligned}$$

and thus

$$[F(s+t) - F(s-t)] g(s) = [G(s+t) - G(s-t)] f(s), \quad s \in U_g, t \in \mathbb{R}. \quad (41)$$

On the other hand, observe that we have $Z_g \subset Z_f$ by (40) since $\phi \neq 0$ on \mathbb{R} . So (41) holds for all $s \in U_g \cup Z_g = \mathbb{R}$. Therefore, Theorem (2) can be applied to (41) and the four characterizations follow immediately. \square

It is likely that the methods of this paper work for related equations when we replace the linear mean $\alpha a + (1 - \alpha)b$ by the p -mean $M_\alpha^p(a, b) = (\alpha a^p + (1 - \alpha)b^p)^{\frac{1}{p}}$, for $a, b \geq 0$. Here $M_\alpha^p(a, b)$ is defined for all values of $p \neq 0$. For $p = 0$ the corresponding mean is defined by $M_\alpha^0(a, b) = a^\alpha b^{1-\alpha}$. Moreover, for $p \in \{-\infty, \infty\}$ we can define $M_\alpha^{-\infty}(a, b) = \min\{a, b\}$ and $M_\alpha^\infty(a, b) = \max\{a, b\}$. We intend to investigate this issue in a subsequent paper.

The essence of our approach is to reduce a functional equation to an ODE. For this strategy we need certain smoothness assumptions. It would be interesting to provide an alternative way that will not require this additional smoothness assumptions.

Acknowledgements

We would like to thank Professor Jürg Rätz for helpful conversations on the subject of this work. We thank also the referee for carefully reading the manuscript and for his/her comments.

Open Access. This article is distributed under the terms of the Creative Commons Attribution 4.0 International License (<http://creativecommons.org/licenses/by/4.0/>), which permits unrestricted use, distribution, and reproduction in any medium, provided you give appropriate credit to the original author(s) and the source, provide a link to the Creative Commons license, and indicate if changes were made.

References

- [1] Aczél, J.: A mean value property of the derivative of quadratic polynomials - without mean values and derivatives. *Math. Mag.* **58**(1), 42–45 (1985)
- [2] Aumann, G.: Über einen elementaren Zusammenhang zwischen Mittelwerten, Streckenrechnung und Kegelschnitten. *Tohoku Math. J.* **42**, 32–37 (1936)
- [3] Ebanks, B.: Generalized Cauchy difference equations II. *Proc. Am. Math. Soc.* **136**(11), 3911–3919 (2008)
- [4] Fechner, W., Gselmann, E.: General and alien solutions of a functional equation and of a functional inequality. *Publ. Math. Debrecen* **80**(1–2), 143–154 (2012)
- [5] Haruki, S.: A property of quadratic polynomials. *Am. Math. Monthly* **86**(7), 577–579 (1979)
- [6] Kannappan, P.I.: Rudin's problem on groups and a generalization of mean value theorem. *Aequationes Math.* **65**(1–2), 82–92 (2003)
- [7] Páles, Z.: On the equality of quasi-arithmetic and Lagrangian means. *J. Math. Anal. Appl.* **382**, 86–96 (2011)
- [8] Sablik, M.: Taylor's theorem and functional equations. *Aequationes Math.* **60**(3), 258–267 (2000)

- [9] Sahoo, P.K., Riedel, T.: Mean value theorems and functional equations. World Scientific Publishing Co. Inc., River Edge (1998)

Zoltán M. Balogh
Institute of Mathematics
University of Bern
Sidlerstrasse 5
3012 Bern
Switzerland
e-mail: zoltan.balogh@math.unibe.ch

Orif O. Ibrogimov
Institute of Mathematics
University of Bern
Sidlerstrasse 5
3012 Bern
Switzerland
e-mail: orif.ibrogimov@math.unibe.ch

Boris S. Mityagin
Department of Mathematics
The Ohio State University
231 W 18th Ave. MW 534
Columbus, OH, 43210
USA
e-mail: mityagin.1@osu.edu

Received: June 12, 2015

Revised: November 23, 2015