

Assessing Inequality Using Percentile Shares

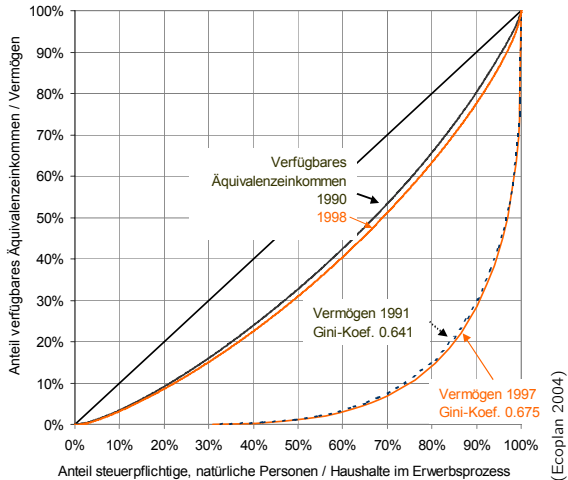
Ben Jann

University of Bern, ben.jann@soz.unibe.ch

6th Sinergia Workshop, Università della Svizzera Italiana
Lugano, October 23, 2015

HAPPY
BIRTHDAY





- ▷ http://www.youtube.com/watch?v=slTF_XXoKAQ
- ▷ https://www.ted.com/talks/dan_ariely_how_equal_do_we_want_the_world_to_be_you_d_be_surprised

Outline

- Motivation
- Estimation of percentile shares
- The `pshare` Stata command
- Examples
- Small sample bias

Estimation of percentile shares

- Outcome variable of interest, e.g. income: Y
- Distribution function: $F(y) = \Pr\{Y \leq y\}$
- Quantile function: $Q(p) = F^{-1}(p) = \inf\{y | F(y) \geq p\}$, $p \in [0, 1]$
- Lorenz ordinates:

$$L(p) = \int_{-\infty}^{Q_p} y dF(y) \Big/ \int_{-\infty}^{\infty} y dF(y)$$

- Finite population form:

$$L(p) = \sum_{i=1}^N Y_i \mathcal{I}\{Y_i \leq Q_p\} \Big/ \sum_{i=1}^N Y_i$$

- Percentile share: proportion of total outcome within quantile interval $[Q_{p_{\ell-1}}, Q_{p_{\ell}}]$, $p_{\ell-1} \leq p_{\ell}$

$$S_{\ell} = L(p_{\ell}) - L(p_{\ell-1})$$

Estimation of percentile shares

- Estimation given sample of size n :

$$\widehat{S}_\ell = \widehat{L}(p_\ell) - \widehat{L}(p_{\ell-1})$$

$$\widehat{L}(p) = (1 - \gamma)\widetilde{Y}_{j-1} + \gamma\widetilde{Y}_j \quad \text{where } \widehat{p}_{j-1} < p \leq \widehat{p}_j \text{ with } \widehat{p}_j = \frac{j}{n}$$

$$\widetilde{Y}_j = \frac{\sum_{i=1}^j Y_{(i)}}{\sum_{i=1}^n Y_i} \quad \text{where } Y_{(i)} \text{ refers to ordered values}$$

$$\gamma = \frac{p - \widehat{p}_{j-1}}{\widehat{p}_j - \widehat{p}_{j-1}} \quad \text{(linear interpolation)}$$

- Standard errors

- ▶ approximate standard errors can be obtained by the estimating equations approach as proposed by Binder and Kovacevic (1995)
- ▶ supports complex survey data and joint estimation across subpopulations or repeated measures
- ▶ alternative: bootstrap

Estimation of percentile shares: some extensions

- Percentile share “density”:
 - ▶ particularly useful for graphing

$$D_\ell = \frac{S_\ell}{p_\ell - p_{\ell-1}} = \frac{L(p_\ell) - L(p_{\ell-1})}{p_\ell - p_{\ell-1}}$$

- Totals:

$$T_\ell = \sum_{i=1}^N Y_i \mathcal{I}\{Q_{p_{\ell-1}} < Y_i \leq Q_{p_\ell}\} = S_\ell \cdot \sum_{i=1}^N Y_i$$

- Averages:
 - ▶ again, useful for graphing
 - ▶ useful if you are also interested in levels, not just distribution

$$A_\ell = \frac{T_\ell}{(p_\ell - p_{\ell-1}) \cdot N}$$

Estimation of percentile shares: some extensions

- Contrasts:

- ▶ useful for comparing distributions, e.g. changes over time
- ▶ standard errors easily computed using delta method

$$S_\ell^A - S_\ell^B \quad S_\ell^A / S_\ell^B \quad \ln(S_\ell^A / S_\ell^B) \quad \dots$$

- Using a different total:

- ▶ useful, e.g., to analyze income components or subpopulation shares

$$L^*(p) = \sum_{i=1}^N Y_i \mathcal{I}\{Y_i \leq Q_p\} / T$$
$$S_\ell^* = L^*(p_\ell) - L^*(p_{\ell-1})$$

with T whatever you like it to be (e.g. the total of variable Z or the total across subpopulations)

Estimation of percentile shares: some extensions

- Using a different ordering variable (“concentration curve”; bivariate analysis):
 - ▶ compute shares while ordering by a different variable
 - ▶ useful for analyzing relations between variables (wealth and income, pre- and post-tax income, etc.)
 - ▶ standard errors: puhh . . . let’s just use bootstrap

$$L^Z(p) = \frac{\sum_{i=1}^N Y_i \mathcal{I}\{Z_i \leq Q_p^Z\}}{\sum_{i=1}^N Y_i}$$
$$S_\ell^Z = L^Z(p_\ell) - L^Z(p_{\ell-1})$$

- Often a combination of using a different total and using a different ordering variable is useful (e.g. to analyze redistribution).

The `pshare` Stata command

- `pshare estimate`
 - ▶ estimates the percentile shares and their variance matrix
 - ▶ arbitrary cutoffs for the percentile groups
 - ▶ joint estimation across multiple outcome variables or subpopulations
 - ▶ shares as proportions, densities, totals, or averages
 - ▶ etc.
- `pshare contrast`
 - ▶ computes contrasts between outcome variables or subpopulations
 - ▶ differences, ratios, or log ratios
- `pshare stack`
 - ▶ displays percentile shares as stacked bar chart
- `pshare histogram`
 - ▶ displays percentile shares as histogram

Example: quintile shares (the default)

```
. sysuse nlsw88  
(NLSW, 1988 extract)
```

```
. pshare estimate wage, percent
```

```
Percentile shares (percent)          Number of obs      =          2,246
```

wage	Coef.	Std. Err.	t	P> t	[95% Conf. Interval]	
0-20	8.018458	.1403194	57.14	0.000	7.743288	8.293627
20-40	12.03655	.1723244	69.85	0.000	11.69862	12.37448
40-60	16.2757	.2068139	78.70	0.000	15.87013	16.68127
60-80	22.47824	.2485367	90.44	0.000	21.99085	22.96562
80-100	41.19106	.6246426	65.94	0.000	39.96612	42.41599

- top 20% percent of the population get 41% of wages
- bottom 20% only get 8% of wages, etc.

Example: bottom 50%, mid 40%, and top 10%

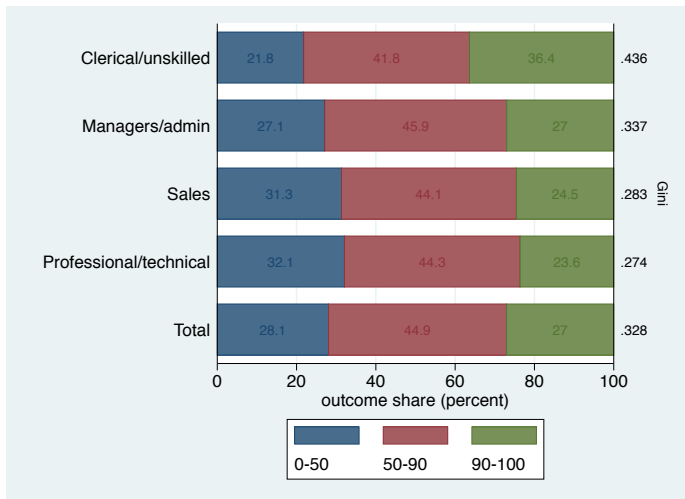
```
. pshare estimate wage, percent percentiles(50 90)
```

```
Percentile shares (percent)                Number of obs    =        2,246
```

wage	Coef.	Std. Err.	t	P> t	[95% Conf. Interval]
0-50	27.59734	.3742279	73.74	0.000	26.86347 28.33121
50-90	45.86678	.4217771	108.75	0.000	45.03967 46.6939
90-100	26.53588	.682887	38.86	0.000	25.19672 27.87503

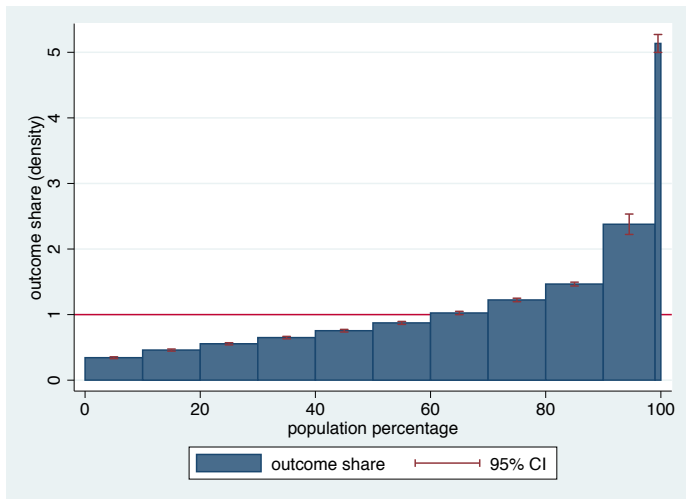
Example: stacked bars plot

- . pshare estimate wage if occ<=4, percent p(50 90) over(occ) total gini
(output omitted)
- . pshare stack, values sort(gini tlast descending)



Example: histogram of densities

- . pshare estimate wage, density percentiles(10(10)90 99)
(output omitted)
- . pshare histogram, yline(1)



Example: histogram of densities

- Interpretation

- ▶ Take 100 dollars and divide them among 100 people who line up along the x-axis.
- ▶ The heights of the bars shows you how much each one gets.
- ▶ If all get the same, then everyone would get one dollar (red line).
- ▶ However, according to the observed distribution, the rightmost person would get five of the 100 dollars, the next 9 would get about two and a half dollars each, . . . , the bottom 10 only get 35 cents each.

Example: contrasts

```
. pshare estimate wage, density over(union) n(10)
(output omitted)
. pshare contrast
```

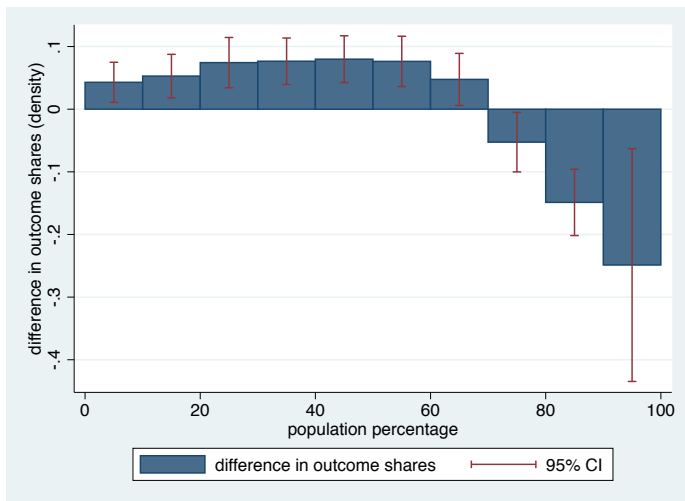
```
Differences in percentile shares (density)      Number of obs      =      1,878
0: union = nonunion
1: union = union
```

	wage	Coef.	Std. Err.	t	P> t	[95% Conf. Interval]
1						
	0-10	.0429197	.0163153	2.63	0.009	.0109217 .0749177
	10-20	.0528084	.017715	2.98	0.003	.0180653 .0875515
	20-30	.0743417	.0204657	3.63	0.000	.0342038 .1144796
	30-40	.0765406	.0189037	4.05	0.000	.0394662 .113615
	40-50	.0798209	.0190657	4.19	0.000	.0424287 .1172131
	50-60	.0763097	.0204684	3.73	0.000	.0361665 .1164529
	60-70	.0475279	.0211943	2.24	0.025	.005961 .0890948
	70-80	-.0526677	.0242164	-2.17	0.030	-.1001615 -.0051738
	80-90	-.1487654	.0270098	-5.51	0.000	-.2017378 -.095793
	90-100	-.2488358	.0948034	-2.62	0.009	-.434767 -.0629046

(contrasts with respect to preceding subpopulation)

Example: contrasts

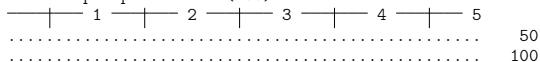
```
. pshare histogram
```



Example: concentration curve

```
. pshare estimate hours, pvar(wage) density n(10) vce(bootstrap, reps(100))  
(running pshare on estimation sample)
```

```
Bootstrap replications (100)
```



```
Percentile shares (density)          Number of obs    =    2,242  
                                      Replications      =    100
```

hours	Observed Coef.	Bootstrap Std. Err.	z	P> z	Normal-based [95% Conf. Interval]	
0-10	.8880782	.0210689	42.15	0.000	.8467839	.9293726
10-20	.9038126	.0200836	45.00	0.000	.8644495	.9431758
20-30	.934641	.0227132	41.15	0.000	.890124	.979158
30-40	.9980166	.0169864	58.75	0.000	.9647239	1.031309
40-50	1.014016	.0166936	60.74	0.000	.9812967	1.046734
50-60	1.037906	.0205587	50.49	0.000	.9976118	1.0782
60-70	1.052623	.0156106	67.43	0.000	1.022027	1.083219
70-80	1.037115	.0149629	69.31	0.000	1.007788	1.066442
80-90	1.075704	.0156393	68.78	0.000	1.045052	1.106357
90-100	1.058088	.0169989	62.24	0.000	1.02477	1.091405

(percentile groups with respect to wage)

- the 10% with the highest wages work 5.8% longer hours
- the 10% with the lowest wages work 11.2% shorter hours

Some examples with “real” data

- Tax data from canton of Bern, Switzerland, 2002 and 2012
- individual level data from personal tax forms
- information on income components, deductions, assets, etc.
- units of analysis in following examples are “tax units”

```
. describe
```

```
Contains data from BE-02-12.dta
```

```
obs:      1,153,709
```

```
vars:      9
```

```
23 Oct 2015 11:26
```

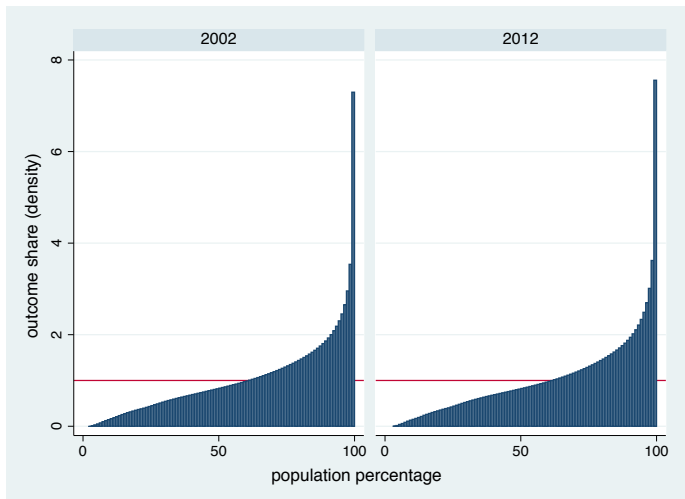
```
size:     39,226,106
```

variable name	storage type	display format	value label	variable label
year	int	%9.0g		Year
earnings	float	%9.0g		Labor market income
capincome	float	%9.0g		Capital income
transfers	float	%9.0g		Transfer income
tax	float	%9.0g		Tax
heritage	long	%10.0gc		Received heritage
income	float	%9.0g		Total income
aftertax	float	%9.0g		After tax income
wealth	float	%9.0g		Net wealth

```
Sorted by:
```

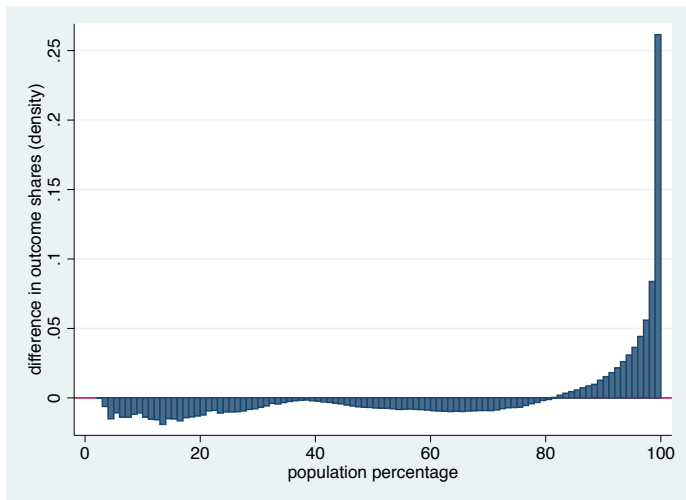
Distribution of total income in 2002 and 2012

- . pshare estimate income, density over(year) n(100) nose
(output omitted)
- . pshare histogram, yline(1)



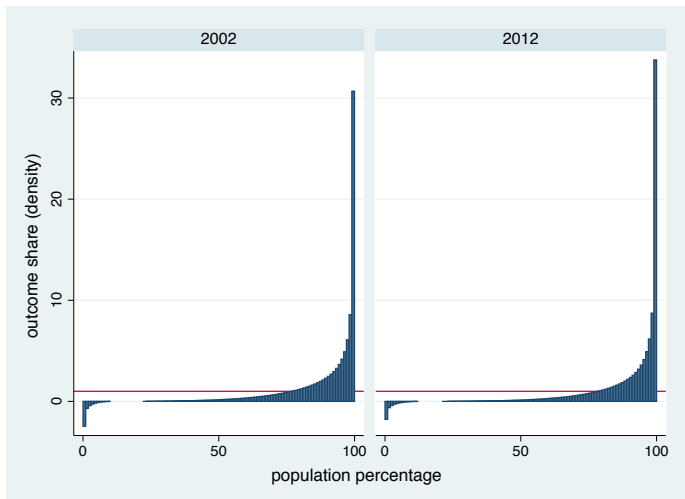
Change in income distribution from 2002 to 2012

- . pshare contrast
(output omitted)
- . pshare histogram, yline(0)



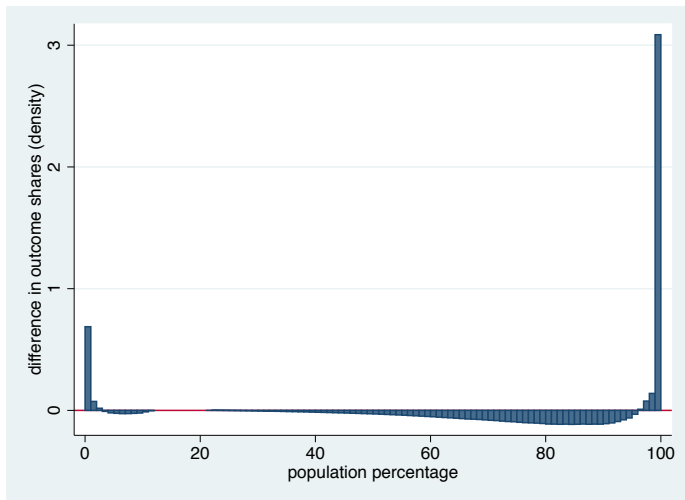
Distribution of net wealth in 2002 and 2012

- . pshare estimate wealth, density over(year) n(100) nose
(output omitted)
- . pshare histogram, yline(1)



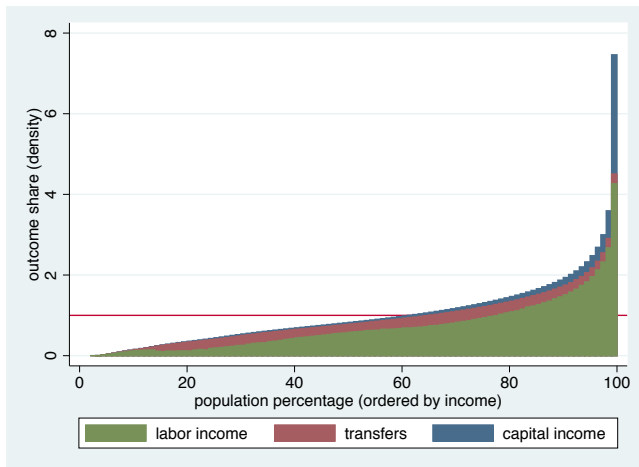
Change in wealth distribution from 2002 to 2012

- . pshare contrast
(output omitted)
- . pshare histogram, yline(0)



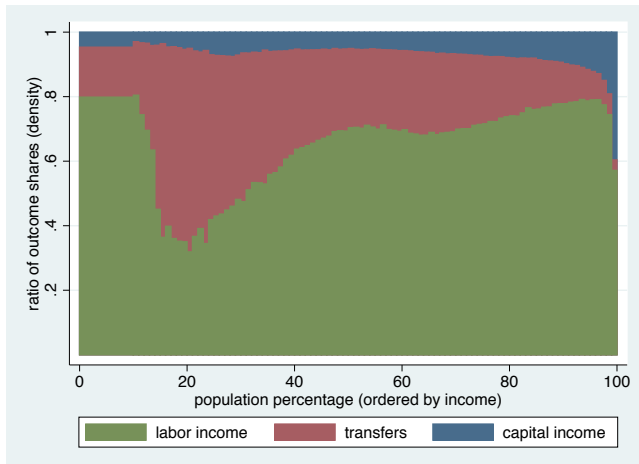
Income composition by income percentiles (2012)

```
. generate earn_trans = earnings + transfers  
. quietly pshare estimate income earn_trans earnings, ///  
>   pvar(income) base(income) density n(100) nose  
  
. pshare histogram, overlay yline(1) fintensity(100) color(*.8) ///  
>   legend(order(3 "labor income" 2 "transfers" 1 "capital income") rows(1))
```



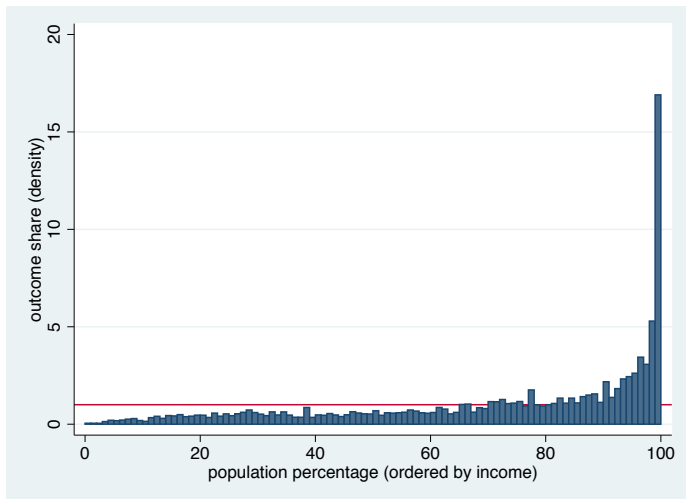
Income composition in relative terms (2012)

```
. generate earn_trans_cap = income
. quietly pshare estimate income earn_trans_cap earn_trans earnings, ///
>   pvar(income) base(income) density p(10(1)99) nose
. quietly pshare contrast income, ratio
. pshare histogram, overlay finten(100) color(*.8) base(0) ///
>   legend(order(3 "labor income" 2 "transfers" 1 "capital income") rows(1))
```



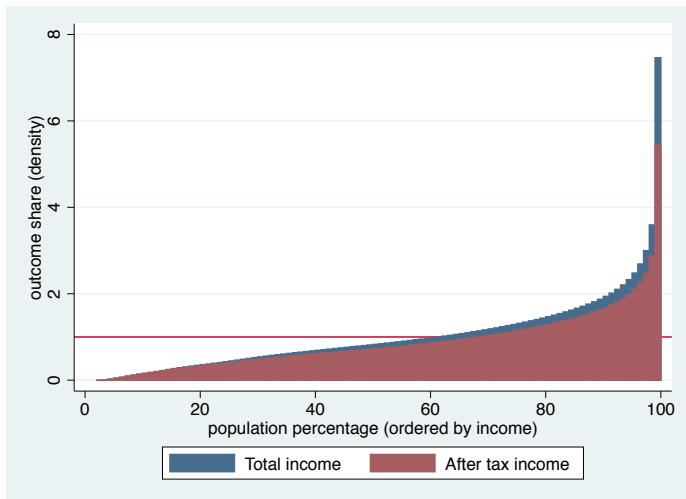
Received heritage by income percentiles (2012)

- . pshare estimate heritage, pvar(income) n(100) density nose
(output omitted)
- . pshare histogram, yline(1)



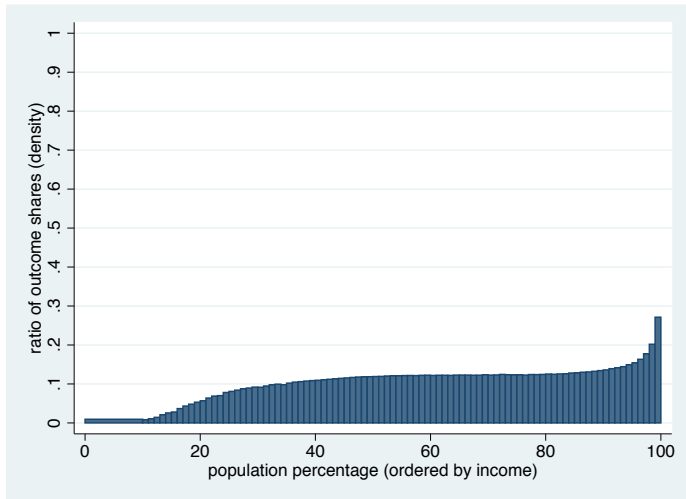
Pre-tax and post-tax income (2012)

- . pshare estimate income aftertax, base(income) pvar(income) n(100) density nose
(output omitted)
- . pshare histogram, yline(1) overlay finten(100) color(*.8)



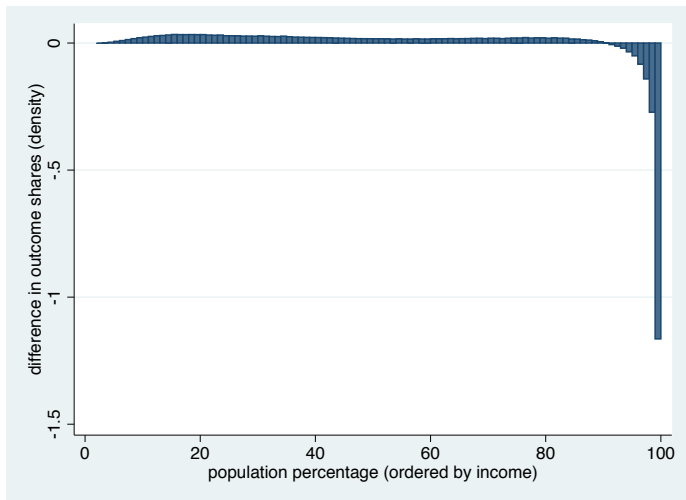
Tax rate by income percentiles (2012)

```
. quietly pshare estimate income tax, base(income) pvar(income) ///  
>      p(10(1)99) density nose  
  
. quietly pshare contrast income, ratio  
  
. pshare histogram, base(0) ylabel(0(.1)1)
```



“Winners” and “losers” from taxation (2012)

- . quietly pshare estimate income aftertax, pvar(income) n(100) density nose
- . quietly pshare contrast income
- . pshare histogram

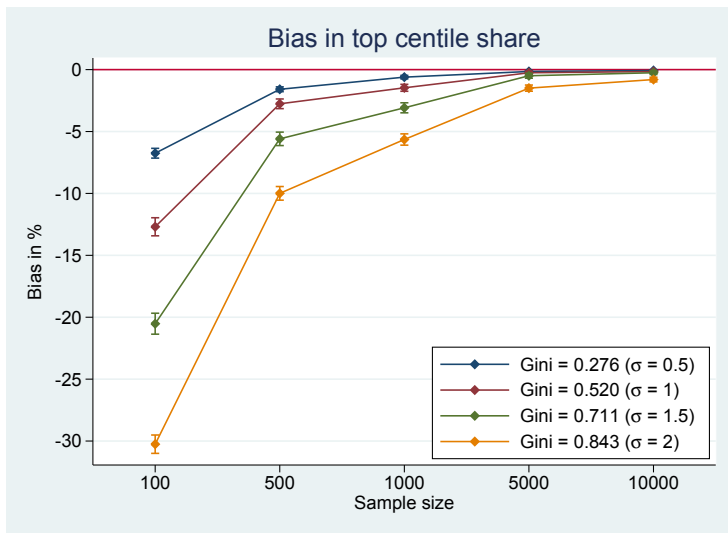


Small sample bias

- Percentile shares are affected by small sample bias.
- The top percentile share is typically underestimated.
- The problem is difficult to fix.
 - ▶ Corrections could be derived based on parametric assumptions.
 - ▶ Smoothing out the data by adding random noise can be an option, but this also requires parametric assumptions.
 - ▶ I evaluated a non-parametric small-sample correction using a bootstrap approach: the bias in bootstrap samples is used to derive correction factors for the main results.
 - ▶ This works very well in terms of removing bias (unless the distribution is extremely skewed).
 - ▶ **However:** MSE increases compared to uncorrected results!
 - ▶ No idea how to improve on this.

Small sample bias: how bad is the problem?

- Simulation: relative bias in top 1% share using a log-normal distribution



Software and paper

- Software:

```
. ssc install pshare  
. ssc install moremata  
. mata mata mlib index
```

- Paper:

- ▶ Jann, Ben. 2015. Assessing inequality using percentile shares. University of Bern Social Sciences Working Papers No. 13. <https://ideas.repec.org/p/bss/wpaper/13.html>

References

- Ecoplan (2004). Verteilung des Wohlstands in der Schweiz. Bern: Eidgenössische Steuerverwaltung.
- Binder, D. A., M. S. Kovacevic (1995). Estimating Some Measures of Income Inequality from Survey Data: An Application of the Estimating Equations. Survey Methodology 21(2): 137-145.