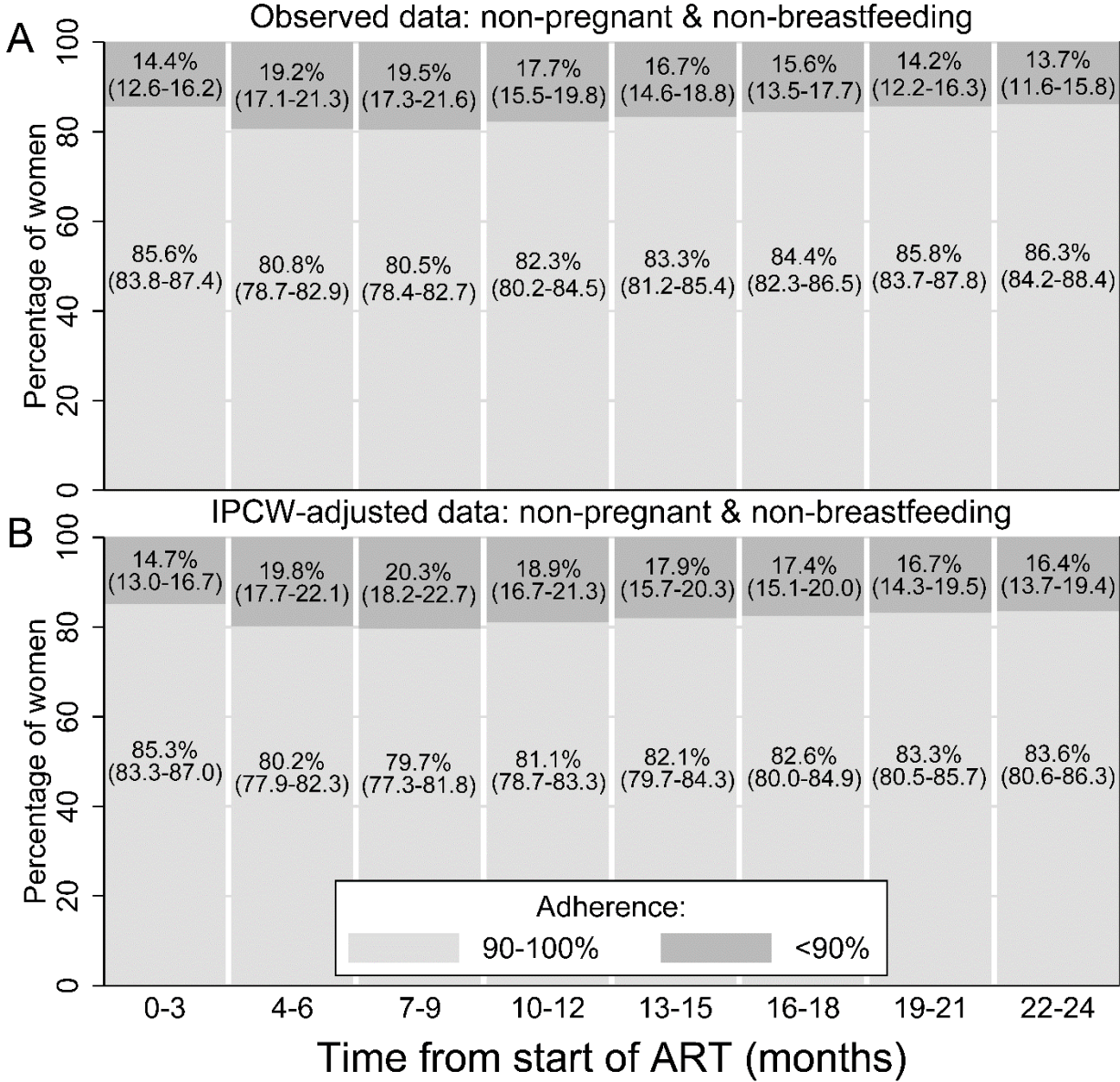


Appendix 1: Adherence during 3-monthly time intervals following ART initiation.

Data are for non-pregnant and non-breastfeeding women who started ART with CD4 cell count <350 cells/ μ L or with WHO clinical stage 3/4 diseases. Figure shows observed and inverse probability of censoring weighted (IPCW) estimates for adherence levels during 3-month time intervals following ART initiation. Data are percentage (95%-confidence intervals) of women with adherence of <90% and \geq 90%. Observed data included women retained in care by the end of the interval. IPCW-adjusted data represent a pseudo-population that would have been observed without censoring.



Appendix 2: Comparison of women who started ART with during pregnancy and could be linked and could not be linked to infant records.

	Linkage to infant record		Total	P-value
	Yes	No		
Number of women (%)	765 (18.0%)	3483 (82.0%)	4248 (100.0%)	
Age (in years)				0.142
15-19 (%)	39 (5.1%)	240 (6.9%)	279 (6.6%)	
20-24	160 (20.9%)	798 (22.9%)	958 (22.6%)	
25-29 (%)	326 (42.6%)	1405 (40.3%)	1731 (40.7%)	
≥30 (%)	240 (31.4%)	1040 (29.9%)	1280 (30.1%)	
Median (IQR)	28 (24-32)	28 (24-31)	28 (24-32)	
Year of ART initiation (%)				<0.0001
2011	110 (14.4%)	406 (11.7%)	516 (12.1%)	
2012	441 (57.6%)	1795 (51.5%)	2236 (52.6%)	
2013	214 (28.0%)	1282 (36.8%)	1496 (35.2%)	
WHO clinical stage (%)				0.295
Stage 1	756 (98.8%)	3431 (98.5%)	4187 (98.6%)	
Stage 2	8 (1.0%)	30 (0.9%)	38 (0.9%)	
Stage 3	0 (0.0%)	15 (0.4%)	15 (0.4%)	
Stage 4	1 (0.1%)	7 (0.2%)	8 (0.2%)	
Facility type (%)				<0.0001
Central hospital	45 (5.9%)	417 (12.0%)	462 (10.9%)	
District hospital	448 (58.6%)	2098 (60.2%)	2546 (59.9%)	
Mission hospital	77 (10.1%)	272 (7.8%)	349 (8.2%)	
Health centre	195 (25.5%)	696 (20.0%)	891 (21.0%)	
Adherence in year 2 (%)				0.002
≥90%	432 (70.0%)	1,232 (66.0%)	1664 (67.0%)	
80-89%	109 (17.7%)	294 (15.7%)	403 (16.2%)	
<80%	76 (12.3%)	342 (18.3%)	418 (16.8%)	
Mean	89.8	87.1	87.8	0.0015

Data are n (%) unless indicated otherwise. ART: Antiretroviral therapy. IQR: Interquartile range.

P-value for proportions from Pearson's chi-squared test for the hypothesis that the women's characteristics are independent from eligibility of subgroup analysis. P-value for means from t-test for the hypothesis that group means are independent from eligibility of subgroup analysis.