

Global Optimization of an Analog Method by Means of Genetic Algorithms

PASCAL HORTON^a

Institute of Earth Sciences, University of Lausanne, Lausanne, and Oeschger Centre for Climate Change Research and Institute of Geography, University of Bern, Bern, Switzerland

MICHEL JABOYEDOFF

Institute of Earth Sciences, University of Lausanne, Lausanne, Switzerland

CHARLES OBLED

Laboratoire d'étude des Transferts en Hydrologie et Environnement (LTHE), Université de Grenoble-Alpes, Grenoble, France

(Manuscript received 7 March 2016, in final form 26 September 2016)

ABSTRACT

Analog methods are based on a statistical relationship between synoptic meteorological variables (predictors) and local weather (predictand, to be predicted). This relationship is defined by several parameters, which are often calibrated by means of a semiautomatic sequential procedure. This calibration approach is fast, but has strong limitations. It proceeds through successive steps, and thus cannot handle all parameter dependencies. Furthermore, it cannot automatically optimize some parameters, such as the selection of pressure levels and temporal windows (hours of the day) at which the predictors are compared. To overcome these limitations, the global optimization technique of genetic algorithms is considered, which can jointly optimize all parameters of the method, and get closer to a global optimum, by taking into account the dependencies of the parameters. Moreover, it can objectively calibrate parameters that were previously assessed manually and can take into account new degrees of freedom. However, genetic algorithms must be tailored to the problem under consideration. Multiple combinations of algorithms were assessed, and new algorithms were developed (e.g., the *chromosome of adaptive search radius*, which is found to be very robust), in order to provide recommendations regarding the use of genetic algorithms for optimizing several variants of analog methods. A global optimization approach provides new perspectives for the improvement of analog methods, and for their application to new regions or new predictands.

1. Introduction

Analog methods (AMs) rely on the hypothesis that similar situations, in terms of atmospheric circulation, are likely to result in similar local weather conditions (Lorenz 1956, 1969; Duband 1970; Bontron and Obled

2005). These methods consist of sampling a certain number of past situations, based on different synoptic-scale meteorological variables (predictors), in order to construct a probabilistic prediction for a local weather variable of interest (predictand). Some common usages of AMs are for operational precipitation forecasting (e.g., Guilbaud 1997; Bontron and Obled 2005; Hamill and Whitaker 2006; Bliefernicht 2010; Marty et al. 2012; Horton et al. 2012; Hamill et al. 2015; Ben Daoud et al. 2016), or more recently for precipitation downscaling in a climate perspective (e.g., Radanovics et al. 2013; Chardon et al. 2014; Dayon et al. 2015). However, AMs or equivalent methods are also employed to predict temperatures (Radinović 1975; Woodcock 1980; Kruizinga and Murphy 1983; Delle Monache et al. 2013; Caillouet et al. 2016), wind (Gordon 1987; Delle Monache et al. 2013, 2011; Vanyvve et al. 2015; Alessandrini et al.

^a Denotes content that is immediately available upon publication as open access.

^a Current affiliation: Oeschger Centre for Climate Change Research and Institute of Geography, University of Bern, Bern, Switzerland.

Corresponding author e-mail: Pascal Horton, pascal.horton@giub.unibe.ch

DOI: 10.1175/MWR-D-16-0093.1

© 2017 American Meteorological Society. For information regarding reuse of this content and general copyright information, consult the [AMS Copyright Policy](#) (www.ametsoc.org/PUBSReuseLicenses).

2015b; Junk et al. 2015a,b), solar power (Alessandrini et al. 2015a; Bessa et al. 2015), snow avalanches (Obled and Good 1980; Bolognesi 1993), insolation (Bois et al. 1981), and the trajectories of tropical cyclones (Keenan and Woodcock 1981; Sievers et al. 2000; Fraedrich et al. 2003).

Although the method is rather simple, it contains several parameters to be optimized, such as the choice of the predictor variables, pressure levels and temporal windows (hours of the day) at which the predictors are compared along with the spatial domains used for the comparison, the analogy criteria (distance measure), and finally the number of analog situations to retain.

AMs must be adapted to every newly considered region because the leading meteorological influences may be location specific. Even the selection of the pressure levels and the temporal windows should be reconsidered, if not the predictor variable itself. Thus, before being applied within a forecasting or downscaling context, AMs must be calibrated for the given region, which is performed here within the perfect prognosis framework (Klein 1963), in line with the majority of the previously cited AM calibration procedures for precipitation predictions [with the exception of Hamill and Whitaker (2006) and Hamill et al. (2015)].

A common approach to optimizing this method is by means of a semiautomatic sequential calibration procedure, which was developed by Bontron (2004), and is also described in Ben Daoud et al. (2016) and extended by Radanovics et al. (2013). This approach determines some parameters of the method sequentially for each consecutive analogy level (e.g., on the atmospheric circulation or on a moisture index). It begins with a manual selection of the meteorological variables (e.g., geopotential height and relative humidity), the pressure levels, the temporal windows, and the initial analog numbers. Then, the spatial window over which the predictors are compared is optimized through an iterative growth of the domain, and the number of analogs is finally reassessed. A successive level of analogy can then be introduced, and its spatial window be optimized. The parameters of the preceding levels of analogy are not reassessed, except for the number of analog situations to preserve.

Thus, the sequential calibration procedure allows for the optimization of a limited number of parameters (spatial windows and analog numbers), but the selection of predictor variables, pressure levels, and temporal windows must still be made manually. Testing multiple combinations of these parameters presents a very combinatorial problem, which quickly becomes cumbersome, especially when considering multiple predictors within the same level of analogy. Thus, optimizing

AMs by means of this sequential technique is laborious if little knowledge is available regarding the predictor–predictand relationship or the leading meteorological influences. Indeed, many combinations of parameters (predictor variables, pressure levels, and temporal windows) must be assessed. Moreover, proceeding to the optimization sequentially ignores potential dependencies between the parameters of the method, whether they are within a single level of analogy or between multiple levels, which could lead to another configuration if the parameters were calibrated together. Thus, there is a high risk of ending in a local optimum, and this cannot be avoided.

When creating this sequential calibration procedure, Bontron (2004) was aware of the problem of dependencies between parameters, and wrote the following: “We perceive here the combinatorial aspect of our problem: variables and spatial windows are not independent. We will present our results by first searching the best variable (e.g., selection of the pressure level and the temporal window for the geopotential height) on a chosen spatial window, and next, the best window for the chosen variable. However, even by repeating the process, are we sure to obtain the optimal combination?” Later in his work, he also wrote: “Our approach, which is again to vary the parameters one by one—the others being fixed in a more or less arbitrary manner—may therefore not exactly lead us to the optimal solution.” Bliefert (2010) has also confronted the combinatorial issue for the parameters of AMs, and concluded that one must be an expert in order to have a sense of their respective influence, sensitivity, and nonlinear interactions. When calibrating an AM, Ben Daoud (2010) also stated that “the combinatory aspect related to the calibration was found to be too high for all the parameters to be calibrated simultaneously.” The simultaneous calibration of all parameters has not been undertaken so far.

Another optimization strategy, proposed by Junk et al. (2015b), allows for an automatic calibration of weights applied to the different predictors when processing the analogy criteria (distance function). Their strategy consists of a brute-force assessment of all possible combinations. This approach is possible in their implementation because predictors are considered at a unique point (interpolated to the location of interest), at fixed hours, and at preselected pressure levels, leaving only the weights to be optimized. In the presently employed AM (described in section 3), the number of parameters to optimize makes it impossible to proceed with a brute-force strategy.

To overcome these limitations, two optimization techniques have been assessed. First, Horton (2012) assessed the abilities of the Nelder and Mead (1965)

method, based on a simplex algorithm. This technique did not provide satisfying results and failed to converge toward a unique solution. The parameter space of the AMs can be very complex and is inappropriate for a linear optimization technique. Thus, global optimization techniques are likely to be necessary in order to calibrate most AM variants, as they can optimize all parameters of all analogy levels simultaneously. In addition, they can avoid the systematic manual assessments of all pressure levels and temporal windows. Finally, they allow the testing of new degrees of freedom in AMs. The relevance of genetic algorithms (GAs) is demonstrated here, which does not exclude that other global optimization techniques could also work. Although using GAs to optimize AMs may be computationally intensive, once an AM is calibrated, its employment in real-time operations or climate downscaling is very fast and lightweight.

This paper specifically describes how GAs should be used in order to successfully optimize several AMs. Indeed, the variants of GAs are numerous, and always need to be tailored to the addressed problem. This requires intensive and systematic comparisons of operators and options, in order to identify the key factors influencing the optimization, as well as the respective sensitivities of the options. Such analyses are presented here, resulting in recommendations for the use of GAs in optimizing several AM implementations. The in-depth analysis of the benefits of such an approach in a specific case study will be the topic of a forthcoming paper.

This paper begins by presenting the area of the case study and the relevant data (section 2), the considered AM variants (section 3), and the assessed GA options (section 4). Comparative analyses of these options are presented in section 5, leading to the recommendations formulated in section 6, and finally the conclusions presented in section 7.

2. Case study and data

The area of study is the alpine upper Rhône catchment in Switzerland (Fig. 1). The altitude ranges from 372 to 4634 m MSL, and the area is 5524 km². Based on various climatological analyses [see Horton (2012) for the details], the gauging stations in the catchment were clustered in 10 subregions (Fig. 1).

This region is the target of the Modélisation des Intempéries de Nature Extrême sur les Rivières Valaisannes et de leurs Effets (MINERVE) project, which aims to provide real-time flood management on the upper Rhône catchment (García Hernández et al. 2009). AMs are used to provide real-time probabilistic precipitation



FIG. 1. Location of the alpine Rhône catchment in Switzerland, and its discretization into 10 subregions: 1) Swiss Chablais, 2) Trient valley, 3) west Bernese Alps, 4) lower Rhône valley, 5) left side valleys, 6) southern ridges, 7) upper Rhône valley, 8) southeast ridges, 9) east Bernese Alps, and 10) Conches valley (source: Swisstopo).

forecasts, based on numerical weather prediction (NWP) model output.

Data

AMs rely on two types of data: predictors, which are meteorological variables describing the state of the atmosphere at a synoptic scale, and the predictand, which is the local weather time series that is to be predicted.

When working within the perfect prognosis framework (Klein 1963), the meteorological archive from which the predictors are extracted is usually a reanalysis dataset. Conversely, other applications of AMs for wind forecasting are based on a model output statistics framework (MOS; see Glahn and Lowry 1972) and, thus, employ forecast archives or reforecast products (e.g., Delle Monache et al. 2013, 2011; Alessandrini et al. 2015b; Junk et al. 2015a,b).

In the present study, the NCEP–NCAR reanalysis dataset [6 hourly, 17 pressure levels at a resolution of 2.5°; see Kalnay et al. (1996)] is employed, but this could be replaced with any other reanalysis dataset. This dataset is relatively old, although it is still widely used, and better results may be expected with more recent datasets. However, we can safely assume that if an optimization technique works for this reanalysis dataset, it will also work for an improved one, although the resulting parameters might differ.

Here, the predictand (which is to be predicted) is the daily precipitation (0540–0540 UTC the following day) measured at the MeteoSwiss network of stations in the catchment of interest. The time series from every available gauging station were averaged over subregions of approximately 500 km² [see Horton (2012) for details]

in order to smooth local effects (Obled et al. 2002; Marty et al. 2012). The time series must be split into calibration and independent validation periods.

3. The considered analog method

AMs are based on the principle that two similar synoptic situations over a certain domain may result in similar local effects (Lorenz 1956, 1969). Thus, they are built upon the concept of searching for a certain number of past situations in a meteorological archive that present similar properties for chosen predictors, according to an analogy criterion, in order to extract the observed values of the local weather variable of interest from another archive (predictand time series; see section 2a). Based on these analog observations, the conditional empirical distribution to be considered as the probabilistic prediction for the target day (the day one wishes to predict) is constructed.

Predictors for precipitation predictions can be varied. For example, geopotential heights at different pressure levels and temporal windows, or humidity variables [see Ben Daoud et al. (2016) for a more detailed list of predictors]. This method often contains several levels of analogy, which constitute of successive subsamplings of predictors of differing natures (e.g., atmospheric circulation, moisture variables, vertical motion, and air temperature).

The basis of the AM implementation considered here is the following [the same approach as in Guilbaud (1997), Bontron and Obled (2005), Marty et al. (2012), Horton et al. (2012), Radanovics et al. (2013), Chardon et al. (2014), Dayon et al. (2015), and Ben Daoud et al. (2016)]:

- 1) Preselection—To cope with seasonal effects, n_0 candidate dates are extracted from the archive within a period of 4 months centered around the target date, for every year of the archive. Alternatively, the candidate dates can be selected based on similar air temperatures (see Ben Daoud et al. 2016).
- 2) First level of analogy— n_1 dates are selected out of the preselected n_0 , by means of an analogy ranking. The first level of analogy for precipitation prediction is often based on the atmospheric circulation. The similarity between the atmospheric circulation of the target date and the candidate situations is assessed based on geopotential heights (at specific pressure levels, such as 500 and 1000 hPa, and at different hours, e.g., 12 and 24 h) by means of the S1 criterion [Eq. (1), Teweles and Wobus (1954); Drosowsky and Zhang (2003)]. This criterion is a comparison of gradients over a defined spatial window. Various

studies have found the S1 criterion to be more relevant than Euclidean distances for pressure fields (Wilson and Yacowar 1980; Woodcock 1980; Guilbaud and Obled 1998; Bontron 2004):

$$S1 = 100 \frac{\sum_i |\Delta \hat{z}_i - \Delta z_i|}{\sum_i \max(|\Delta \hat{z}_i|, |\Delta z_i|)}, \quad (1)$$

where $\Delta \hat{z}_i$ is the forecast geopotential height difference between the i th pair of adjacent points from the grid of the target situation and Δz_i is the corresponding observed geopotential height difference in the candidate situation. The differences are processed separately in both directions. The smaller the S1 values, the more similar the pressure fields are.

The n_1 dates with the lowest S1 values are considered to be analog situations, in terms of the atmospheric circulation, for the target day. The analog number n_1 is a parameter to be calibrated.

- 3) Subsequent level(s) of analogy—Beyond the similarity of airflows, one may look for analogies in other variables of interest, such as moisture variables. Therefore, the n_1 analogs are subsampled once more on the basis of another variable, in order to obtain a lower number of analog dates n_2 . When the predictor is not a pressure field, the analogy criterion usually represents absolute distances, such as mean absolute error (MAE) or root-mean-square error (RMSE), with the latter being most often employed.

A second level of analogy, based on thermodynamic variables, was introduced by Vallée (1986) and Gibergans-Báguena and Llasat (2007). After a systematic assessment of variables, Bontron (2004) pointed out that a moisture index consisting of the product of the relative humidity at 850 hPa and the total precipitable water achieves the best performance. This index does not represent an actual physical quantity, but expresses the water content of the air column and its proximity to saturation.

This process can be repeated by subsampling a decreasing number of analog dates n_i , when introducing successively more meteorological variables.

- 4) Probabilistic prediction—Then, the daily observed amounts of precipitation for the n_i resulting dates provide an empirical conditional distribution, considered to be the probabilistic forecast for the target day, eventually after the fitting of a probability law.

The parameters to be defined (manually or automatically), for every level of analogy, are the following:

- the selection of meteorological variables (predictors), containing synoptic-scale information, and having

- a direct or indirect dependency with the target predictand;
- the pressure level, or height, at which the predictor is selected;
 - the temporal window is the hour(s) of the day at which the predictors are considered;
 - the spatial window is the domain on which predictors are compared; the ideal size of this area is that which maximizes the useful information and minimizes noise; it may differ according to the meteorological variable used or with the number of analogs;
 - the analogy criterion, needed to compare the variables on the chosen spatial and temporal windows, is a distance measure, used to rank observed situations according to their degree of similarity with the target situation;
 - eventual weights between the predictors (e.g., Horton 2012; Junk et al. 2015b); and
 - the optimal number of analog situations, which is the best compromise in order to take into account local variability and maximize useful synoptic information (Bontron 2004).

To calibrate the method, the continuous ranked probability score (CRPS; Brown 1974; Matheson and Winkler 1976; Hersbach 2000) is often employed to assess the performance of AMs (see, e.g., Bontron 2004; Bontron and Obled 2005; Ben Daoud et al. 2008; Horton et al. 2012; Marty et al. 2012; Radanovics et al. 2013; Chardon et al. 2014; Junk et al. 2015b; Ben Daoud et al. 2016; Caillouet et al. 2016). This allows for the evaluation of predicted cumulative distribution functions $F(y)$ (e.g., of the precipitation values y from analog situations) compared to the observed value y^0 . The better the prediction, the smaller the score. The mean CRPS of a prediction series of length l can be written as follows:

$$\text{CRPS} = \frac{1}{l} \sum_{i=1}^l \left\{ \int_{-\infty}^{+\infty} [F_i(y) - H_i(y - y_i^0)]^2 dy \right\}, \quad (2)$$

where $H(y - y_i^0)$ is the Heaviside function, which is zero when $y - y_i^0 < 0$ and has a value of one otherwise. The mean CRPS is averaged over the calibration or the validation period.

To compare the value of the score with regard to a reference, one often considers its skill score expression, and employs the climatological distribution of daily precipitation as the reference. The continuous ranked probability skill score (CRPSS) is thus defined as follows:

$$\text{CRPSS} = 1 - \frac{\text{CRPS}}{\text{CRPS}_r}, \quad (3)$$

where CRPS_r is the score value for the reference. An increase in the CRPSS indicates a better prediction.

4. Assessed genetic algorithm variants

Genetic algorithms (Holland 1992; Goldberg 1989) are part of the family of evolutionary algorithms (Bäck and Schwefel 1993; Schwefel 1995), which are inspired by some mechanisms of biological evolution, such as reproduction, genetic mutations, chromosomal cross-overs, and natural selection. Unlike linear or local optimizations, GAs seek the global optimum on complex surfaces, theoretically without restriction, but with no guarantee of reaching it (Haupt and Haupt 2004). The objective function to be optimized (often named the fitness function within this context) can be of various types (Joines et al. 1996), but GAs must be adapted in order to perform optimally.

A key element of the configuration of GAs is determining the correct balance between exploration and exploitation (Bäck 1992a; Smith and Fogarty 1997). Exploration is characterized by a relatively high probability of assessing the regions of the parameter space that have not yet been visited. This probability must be sufficiently large at the beginning of the optimization, so that the algorithm is capable of identifying the region where the global optimum is likely to be located. Exploitation is characterized by a local search in an area of interest and, generally, makes small movements. The latter aims at finding small improvements at the end of the optimization.

a. Structure and operators

GAs optimize a population of N individuals. Each individual contains a chromosome, which here is a vector of the AM parameters. Genes are the individual parameters constituting the chromosome. These can be categorical (e.g., choice of the meteorological variable), discrete (e.g., number of analog dates to select), or continuous.

There are numerous implementation variants of GAs, which are often optimal for a given problem (Hart and Belew 1991; Schraudolph and Belew 1992). The differences are found in the implementation of the operators, through significantly different algorithms, which has an important effect on the results (Gaffney et al. 2010). Here, operators are defined as the mechanisms that modify the values of the genes, to try to bring individuals (or chromosomes) closer to an optimum of the fitness function. The structure of the method (see Fig. 2) that results from the work of Holland (1992) is common to most applications (Bäck and Schwefel 1993), and consists of the following steps. 1) A population of N individuals (parameter sets of the AM to be optimized) is randomly generated, which constitutes the initial population. The fitness (performance score or objective function) of every individual is assessed. 2) A natural

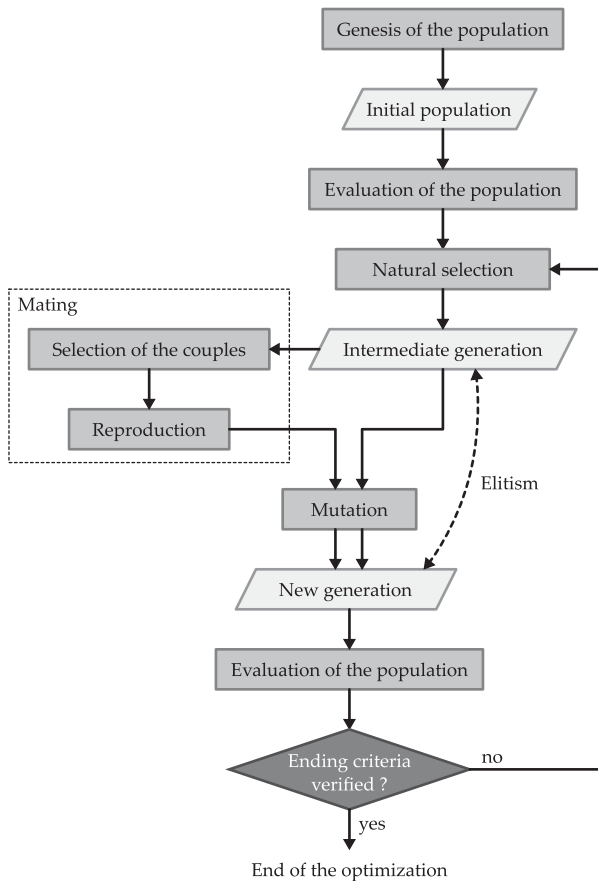


FIG. 2. Genetic algorithms operational flowchart.

selection algorithm is applied, after which only the best individuals remain. This constitutes the intermediate generation (IG), from which 3) couples are formed according to given rules. Then, 4) these couples proceed to the reproduction or chromosome crossover stage, to mix their genes according to the selected operator version. New children are generated, in order to refill the IG back to N individuals. 5) Parents and children are then subjected to mutation, where some genes are randomly changed. 6) Finally, the new generation is then reassessed, and the best individual restored if degraded (so that a superior solution is never lost). Then, 7) according to the ending criterion, the optimization either ends or begins again for another iteration.

All of the considered operators and their options are described in the following sections (only briefly for operators of less importance). Many other operators exist, but only those that are evaluated are described here.

1) GENESIS OF THE POPULATION

The most current version of the initial population generation is a random initialization based on a uniform

sampling. The size N of the population is often a compromise between the computation time and the quality of the solution. The chosen N must allow sufficient sampling of the solutions field (Beasley and Chu 1996) and, thus, should vary as a function of the chromosome size (i.e., the number of genes or parameters to be optimized).

2) NATURAL SELECTION

Natural selection is performed on the basis of the objective function values. The selection allows for only a certain portion of the population to be kept, usually half ($N/2$), which can access the IG (with N_{IG} members). Several techniques exist, such as

- N_{IG} elitism (Michalewicz 1996), where only the better half is preserved, and
- tournament selection (Michalewicz 1996; Zitzler et al. 2004), where two individuals are randomly selected, and the best of these is chosen, but with a certain probability.

3) SELECTION OF THE COUPLES

Individuals of the IG can then reproduce, which begins with the selection of pairs (the parents). The techniques implemented in this study are the following (see Fig. 3):

- rank pairing, where individuals are gathered into pairs according to their ranks;
- random pairing, where individuals are randomly selected, according to a uniform law;
- roulette wheel selection (Goldberg 1989), where the selection probability assigned to each individual is proportional to its fitness, so that the most adapted individuals have a greater probability of reproduction; there are two weighting techniques with this option—the first proceeds according to the rank and the second according to the fitness value; and
- tournament selection, where a number of individuals (two or three) are randomly picked and the best is kept, with a certain probability. This operation is performed twice, once for each partner.

4) CHROMOSOME CROSSOVER

Once the two parents have been selected for breeding, they combine their chromosomes and produce two children, bringing the number of individuals in the population back to N . The combination of chromosomes is carried out using a crossover operator, thereby generating two offspring that have characteristics derived from both parents. This allows the mixing of genes and the potential accumulation of positive mutations. The evaluated crossover operators are the following (see Fig. 4):

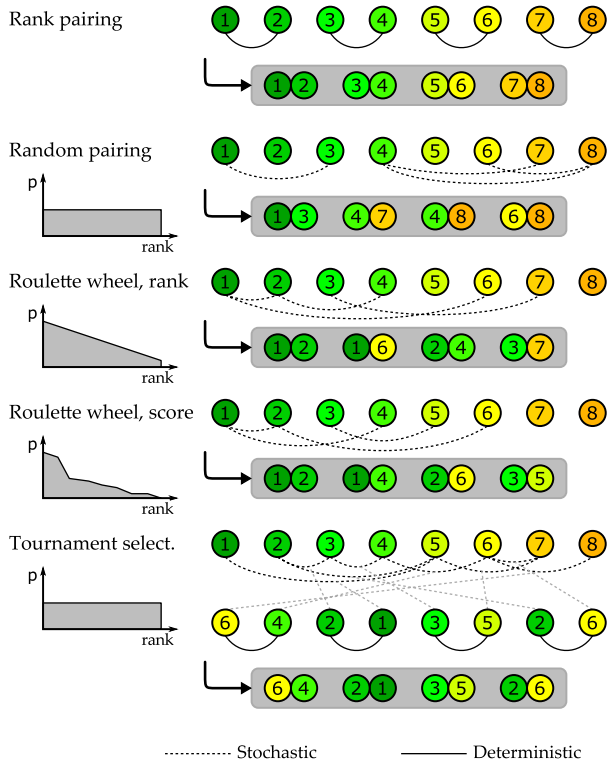


FIG. 3. Illustration of the different couples selection variants assessed in this study. Distributions on the left illustrate the probability of selection depending on the rank of the individual.

- single-point crossover (Goldberg 1989), where the genes located after a randomly chosen point within the chromosome are exchanged between the two parents;
- two-point crossover, which is similar to the single-point crossover, but with two intersections defining the segments to be exchanged; this approach is considered to be more efficient than the previous method (Beasley et al. 1993);

- multiple-point crossover (De Jong 1975), which is a generalization of the previous method, with any number of crossover points up to the number of genes;
- uniform crossover (Syswerda 1989), where for each gene of the chromosome, a random decision is made to exchange the values between the parents or not;
- binarylike crossover (Haupt and Haupt 2004), where to reproduce the behavior present in the canonical crossover algorithm, which is applied to a binary representation of the genes (Goldberg 1989, 1991; Herrera et al. 1998), Haupt and Haupt (2004) propose an operator that combines the standard crossover operation with an interpolation approach; the genes located after a crossover point are exchanged, but the gene located at the intersection is modified as

$$\begin{cases} g_{o1,n} = g_{p1,n} - \beta(g_{p1,n} - g_{p2,n}) \\ g_{o2,n} = g_{p2,n} + \beta(g_{p1,n} - g_{p2,n}) \end{cases} \quad (4)$$

where $g_{o1,n}$ and $g_{o2,n}$ are the n th genes of the two new offspring, and $g_{p1,n}$ and $g_{p2,n}$ are those of the two parents; β is a random value between zero and one, which can either be unique for the whole chromosome or can change for every gene;

- blending method (Radcliffe 1991), where instead of exchanging the genes between the chromosomes after some crossover points, they are combined through a linear combination, also using a random value β ;
- linear crossover (Wright 1991), which widens the range of gene values and produces three children from two parents;
- heuristic crossover (Michalewicz 1996), which is a variation of the blending method;
- linear interpolation, where unlike the previous techniques, this approach does not rely on crossover

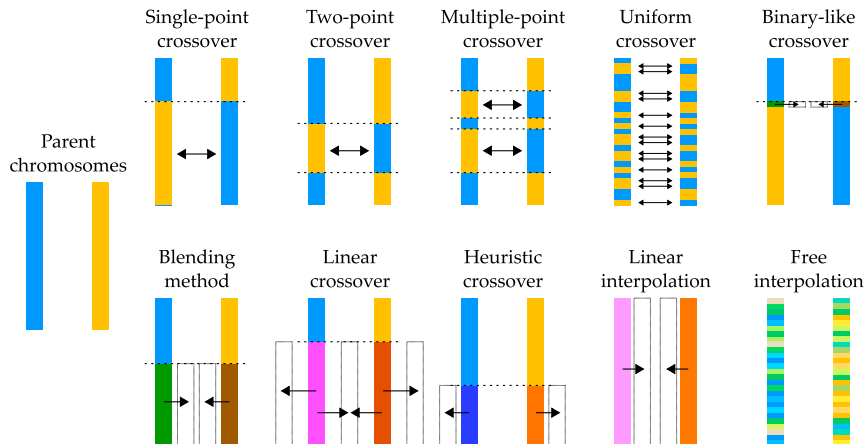


FIG. 4. Illustration of the different chromosome crossover variants assessed in this study.

- points, but rather on a linear interpolation on every gene of the couple; this method also uses a random value β , which is the same for every gene; and
- free interpolation, which performs interpolation on each gene, like the previous one. However, in this case the weighting factor β changes for each gene.

5) MUTATION

The combination of strong genes through the chromosomes crossover operation is theoretically the most important operating mechanism in conventional GAs (Holland 1992; Bäck and Schwefel 1993). However, many studies identify the mutation process as the key operator, and crossovers as secondary (see Bäck 1992a, 1996; Bäck and Schütz 1996; Smith and Fogarty 1997; Deb and Beyer 1999; Costa et al. 2005, 2007).

The mutation operator modifies some gene values. It adds diversity to the population and prevents a freeze of the evolution, or a genetic drift to a local optimum. Thus, it makes the convergence to the global optimum theoretically possible (Beasley et al. 1993), as it allows exploration beyond the current region of the parameters space by introducing new characteristics that were not present in the original population (Haupt and Haupt 2004).

The evaluated and developed mutation operators are listed in the following (equations are only provided for the operator versions that were found to be relevant; the reader may refer to the corresponding literature for details regarding the other options). These apply to genes formed of continuous or discrete variables, but not to those that are categorical (e.g., the choice of the meteorological variable or analogy criterion). In the latter case, the random choice of a new value is always based on a uniform distribution, without a notion of distance in the parameters space.

- Uniform mutation—the mutation rate (p_{mut}) is constant and equal for every gene of each individual. They each have the same probability of mutating. When a gene is selected for mutation, a new random value is assigned, according to a uniform law.
- Variable uniform mutation (Fogarty 1989)—a variable mutation rate over the generations was evaluated by Fogarty (1989). In most applications, the mutation rate decreases with each generation, in a deterministic and global (for all individuals) manner (Bäck 1992b).
- Constant normal mutation—this method employs normal distributions to generate new values of the gene, based on an estimated standard deviation.
- Variable normal mutation (Horton 2012)—with the same logic as the variable uniform mutation, a mutation operator is tested using a normal distribution with a

variable mutation rate and standard deviation, which decrease linearly over generations. This operator has six parameters.

- Nonuniform mutation (Michalewicz 1996)—two random numbers are chosen based on a uniform law: r_1 , which determines the direction of the change, and r_2 , which determines its magnitude. The new value of the gene is given by the following equation, according to a predefined number of generations:

$$g'_n = \begin{cases} g_n + (b_n - g_n)r_2\varphi^2 & \text{if } r_1 < 0.5 \\ g_n - (g_n - a_n)r_2\varphi^2 & \text{if } r_1 \geq 0.5 \end{cases} \quad (5)$$

with

$$\varphi = 1 - \frac{G}{G_m}, \quad (6)$$

where a_n and b_n are the lower and upper bounds, respectively, of the n th gene; G is the present generation; and G_m is the maximum number of generations. This operator is adapted for this application, which is not based on a predefined number of generations, by swapping φ with φ' :

$$\varphi' = 1 - \min\left(\frac{G}{G_{m,r}}, 1\right)(1 - \omega), \quad (7)$$

where $G_{m,r}$ is the maximum number of generations during which the magnitude of the research varies and ω is a chosen threshold to maintain a minimum search radius when $G > G_{m,r}$. During the first generations, the extent of the exploration covers the entire parameters space. However, this area is reduced over generations, allowing the exploitation of local solutions.

- Individual adaptive mutation rate (Bäck 1992a)—based on the ideas of evolution strategies (see Rechenberg 1973; Schwefel 1981), Bäck (1992a) introduced the concept of self-adaptive GAs. The idea is to distribute the control parameters within the individuals themselves, which partially decentralizes the control of the evolution. This allows for a reduction in the manual tuning of GAs, and introduces a notion of self-management. The first approach is the introduction of a mutation rate for each individual, which mutates itself under its own probability (Bäck 1992a). Then, the resulting new rate is employed to mutate the genes of the individual. Thus, as this rate decreases, it has a lower probability of being mutated itself. Mutations are performed according to a constant uniform distribution. The initial mutation rates are randomly chosen (Bäck 1992a), and the method has no parameters.

Other approaches exist for introducing a self-adaptation (see [Smith and Fogarty 1997](#); [Deb and Beyer 1999, 2001](#)).

- Individual adaptive search radius—based on the idea of nonuniform mutation, we introduced a search radius to the approach of individual adaptive mutation rates. This search radius r_a , bounded between zero and one (relative to the parameter ranges), is also adaptive and behaves similarly to the adaptive mutation rates. To separate its evolution from that of the mutation rate, its own value is also considered as a self-mutation rate for eventually mutating before being used as a normalized search radius. The value of a mutated gene is given by the following equation, which is a simplification of the nonuniform mutation:

$$g'_n = \begin{cases} g_n + (b_n - g_n)r_2r_a & \text{if } r_1 < 0.5 \\ g_n - (g_n - a_n)r_2r_a & \text{if } r_1 \geq 0.5 \end{cases} \quad (8)$$

where r_1 and r_2 are randomly selected, such as in nonuniform mutation. Therefore, no external parameter is necessary.

- Chromosome of adaptive mutation rate [or n adaptive mutation rate; [Bäck \(1992a\)](#)]*—*analogously to the individual adaptive mutation rate, this approach leaves the control of the evolution rate to individuals. The difference here is that each gene has a specific mutation rate. The main advantage is that the automatic tuning of the mutation can be made much more precise ([Smith and Fogarty 1997](#)). Thus, a second chromosome containing the mutation rate for each gene of the first chromosome is considered. The operations of mutation and self-mutation are similar to the case of the individual adaptive mutation rate, but proceed in a distributed manner within the chromosome. Moreover, the same crossover operations are applied to this new chromosome as to the main chromosome, and for the same crossing points. Thus, during an exchange of genes, children also inherit the mutation rates specific to each of these genes.
- Chromosome of adaptive search radius—in this operator, we combined the operations of the chromosome of the adaptive mutation rate with the adaptive search radius approach. Similarly, an individual has three chromosomes. The first contains the values to be optimized, the second the distributed mutation rate, and the third the distributed search radius. Again, no external parameter is required.
- Multiscale mutation—finally, we developed another approach that is also based on the search radius concept. However, in this one the radius does not decrease with time. Methods based on a reduction of the mutation rate or radius simulate a transition from the

exploration phase to the exploitation phase. Here, the idea is to test an approach that combines both exploration and exploitation during the whole optimization process. Thus, the search radius r_a from Eq. (8) is considered to be a random value for each individual, but is restricted to four equiprobable values, 1, 0.5, 0.1, and 0.02, representing a range from full exploration to fine exploitation. The only external parameter is the mutation rate, which is fixed.

6) ELITISM

The process of elitism is introduced after both natural selection and mutations. This ensures the survival of the best individual, so that a superior solution is never lost. After the natural selection operation, if the previous best individual has not been selected, then it is copied to the IG in place of a randomly selected individual. After mutation, if the previous best individual has mutated and its new version has a lower performance score than the original, then the original is also reinserted into the IG in place of a randomly selected individual.

7) ENDING THE OPTIMIZATION

The convergence check determines whether the solution is acceptable, and if the algorithm may stop. Here, the optimization is stopped if the best individual does not change for x generations. This value should not be too low, in order to allow the algorithm to escape from local optima, and because the rate of improvement decreases with the progression of the optimization. Thus, it is common that the best individual does not evolve over several generations when getting closer to the global solution. A value of $x = 20$ generations is chosen.

b. Implementation and constraints

GAs are computationally very intensive because they require many evaluations of the objective function. These assessments require some time (a couple of seconds each) in this application, as they require the calculation and assessment of a prediction for every day of the calibration period, which spans several decades. To reduce the computation time, the performance score of an individual, who has previously been evaluated and has not changed, is preserved. Thus, the score of each individual living in the selection is preserved until it mutates.

Because the calculation of the objective function for each member of the population of a generation is completely independent, they are processed in parallel on different CPUs. To perform optimizations for multiple time series, the use of a computer cluster is necessary.

Some constraints must also be taken into account. For example, when a crossover or mutation operation results in a parameter value that is outside of the authorized bounds, this must be brought back within the limits. Moreover, the parameters are of different types: continuous, discrete, or categorical (e.g., the selection of the meteorological variable). Other constraints exist between the parameters; for example, the temporal windows of the relative humidity and the precipitable water predictors must match when processing the moisture index.

5. Assessment process and results

Choosing GA options, such as the mutation rate, population size, and natural selection, appears to be difficult given the high number of existing variants, each developed for a specific problem (Haupt and Haupt 2004; Costa et al. 2007). Thus, different studies suggest significantly different configurations (De Jong 1975; Grefenstette 1986; Bäck 1996; Bäck and Schütz 1996).

In the present study, the choice of meteorological variables (predictors) was still imposed. Then, GAs were required to jointly optimize, for all levels of analogy, (i) the spatial windows (position and size, which can differ between the pressure levels), (ii) the temporal windows (hours of observation of the predictors), (iii) the number of analog situations, and (iv) eventually the selection of the pressure levels (two in this case). The first experiments considered a single level of analogy (on geopotential heights; see section 3), and a second level (on moisture) was added later in section 5c(2).

a. Comparison process

With the main goal of the present paper being to provide recommendations regarding the use of GAs to optimize different AM variants, a systematic procedure was adopted. The results are summarized in the following [see Horton (2012) for the details]. To compare different configurations of GAs, a factorial design approach was applied, in a similar manner to that in Costa et al. (2005, 2007) and Mariano et al. (2010). This allows the isolation of the effects of a parameter under different combinations of the other options.

To evaluate a combination of operators/options, 10 optimizations were processed per configuration of GAs. For all combinations of GA options, 21 630 optimizations were performed on a small Intel Xeon-based high-performance computing (HPC) cluster with eight nodes (Xeon 5670, 2.97 GHz, 12 cores), running Linux Red-Hat. Such an assessment was not possible over the whole archive length, and the work had to be performed over a reduced calibration period of 5 yr from 1998 to 2002,

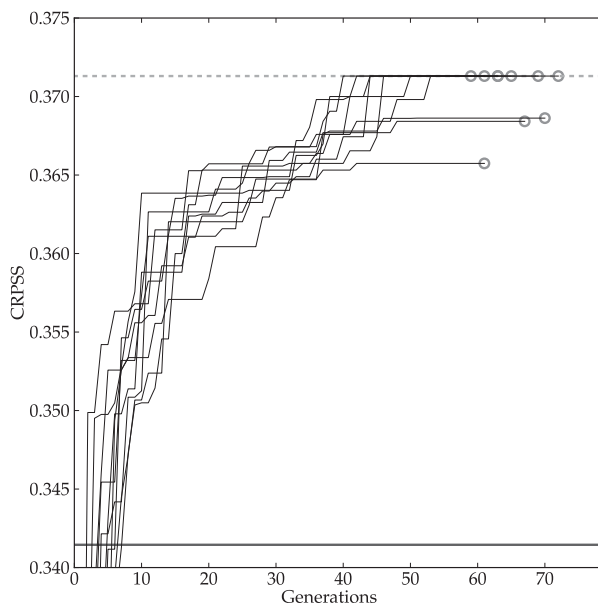


FIG. 5. Evolution of the score of the best individual over each generation for the 10 optimizations processed for a given configuration. The continuous bottom line represents the score of the sequential approach, and the dashed line (at the top of the figure) shows the supposed global optimum. The circles represent the end of the optimization (when the best individual did not progress during 20 generations). Seven out of 10 optimizations converged to the global optimum.

while looking for analog dates over a 48-yr period (1961–2008). The total resources required for this comparison amounted to 229 539 h of CPU time. One should remember that these intensive resources were required in order to assess multiple combinations of GA options, to provide recommendations. Based on these considerations, applying GAs to optimize AMs requires some computational power, but to a lesser extent (the required time is a function of the archive length, the population number, GA options, and the complexity of the AM to be optimized).

The performances were characterized by four indicators: (i) mean performance score, which is an average of the final scores of the 10 optimizations; (ii) convergence, which is the number of optimizations that converged; (iii) number of generations, which is a characterization of the convergence speed; and (iv) number of evaluations of the objective function, which is a characterization of the required calculation time.

b. Convergence

After a first quick assessment, GAs were found to be successful in optimizing the considered AM implementations. Figure 5 illustrates the evolution of the score of the best individual over progressive

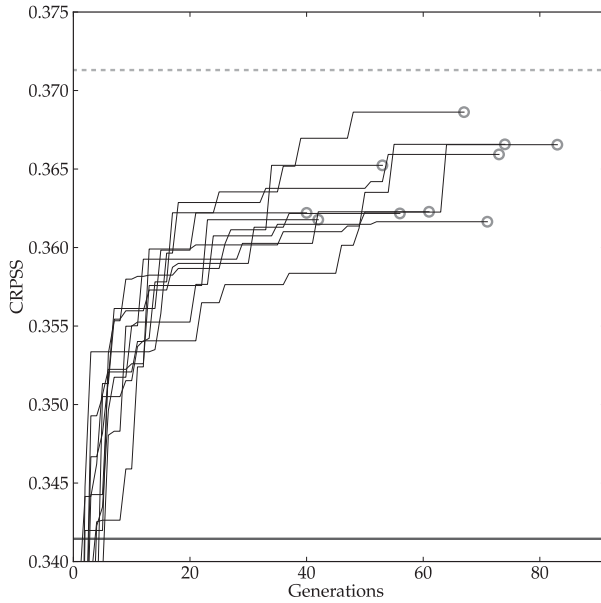


FIG. 6. As in Fig. 5, but for a GA configuration considered to be less relevant and later rejected, because the optimizations did not converge. However, it still performed significantly better than the sequential approach (continuous bottom line).

generations for the 10 optimizations processed for a given configuration of GAs (with the same operator options). Seven out of 10 optimizations converged to the global optimum (dashed line at the top of the plot in Fig. 5) after between 40 and 55 generations, which is not even the best performance we will observe. The performance score of the sequential approach (bottom line) was quickly exceeded, without introducing any new parameters to the method (Fig. 5). The improvement was around 8.8% in this case, which is substantial.

Even GA configurations that were later rejected, because they did not converge (Fig. 6), performed significantly better than the sequential approach. GAs displayed a promising potential for optimizing AMs automatically, globally, and objectively.

c. Results of the comparison

The results of the factorial design procedure illustrate the effect of an operator (e.g., mutation) when its contribution is isolated from the other operators. This means that we analyzed the effects of a given operator for equivalent conditions (with the same settings for other operators), while assessing multiple combinations of these. This contribution was then summarized as a percentage of gain-loss with respect to the mean of all variants, for equivalent external conditions. For example, to evaluate the performance of the uniform crossover operator, its performance was compared to the

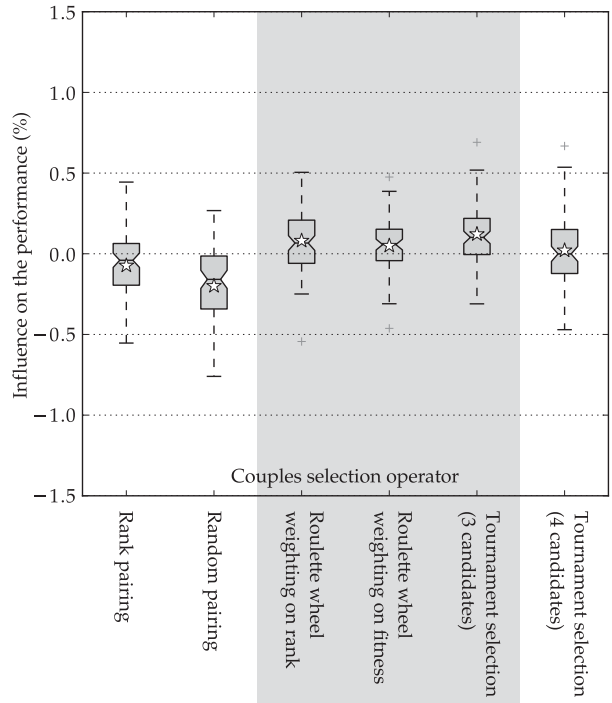


FIG. 7. Influence of the couples selection operators [section 4a(2)] on the optimization performance (improvement of the score). The box extends from the lower to upper quartile values of the data, with a line at the median. The whiskers extend from the box to 1.5 times the interquartile range. Flier points are those past the end of the whiskers. The star represents the median. The gray box highlights the best options.

average of all crossover operators, while retaining the same population size, same mutation, natural selection, and couples selection operators.

From the start of the assessments, the importance of the mutation operator was obvious [see Horton (2012) for details], and its leading influence on the optimization performance was evident. Its role is analyzed later [section 5c(2)].

1) BREEDING OPERATORS

Each combination of the six options for the couples selection (Fig. 7) and 21 options for the chromosome crossover operators (Fig. 8) was evaluated, along with variants of the other operators. This resulted in 1008 combinations, requiring 10 080 optimizations.

The performances of the couples selection operators were relatively similar (Fig. 7). Overall, the tournament selection with three candidates performed slightly better than the others, along with the roulette wheel weighting. However, the latter was a little less effective in terms of convergence and the number of evaluations (not shown). To summarize, the couples selection operator played no significant role in this application.

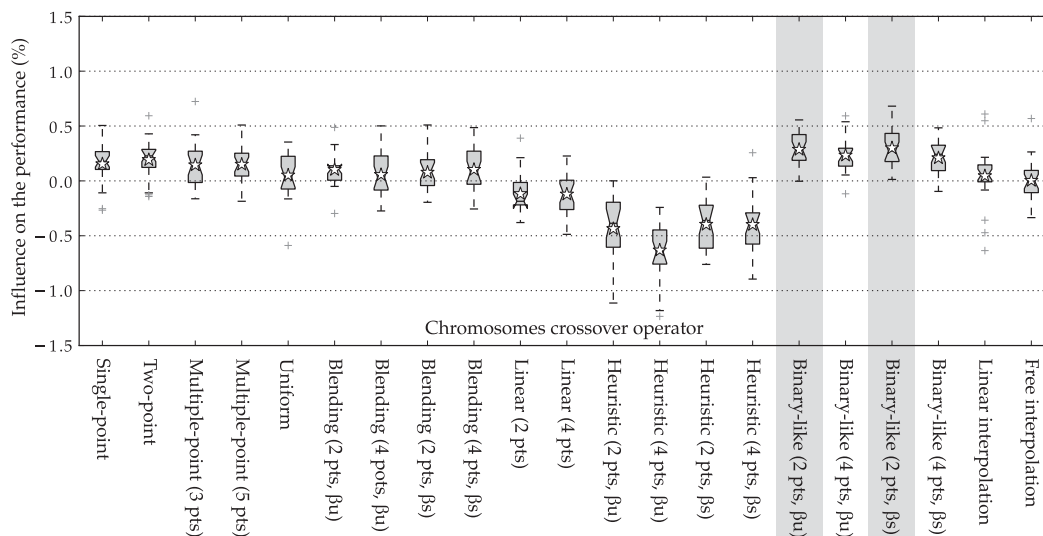


FIG. 8. Influence of the chromosome crossover operators [section 4a(4)] on the optimization performance (improvement of the score); β s represent a shared β parameter and β u the unshared version. The same conventions apply as in Fig. 7.

As for the crossover operators (Fig. 8), binarylike crossover (especially with two points of intersection, whether β is shared or not) performed slightly better than the others, especially in terms of convergence (not shown).

2) MUTATION OPERATOR

Having identified the leading role of the mutation operator, the following sensitivity analysis focuses on it. The 10 different implementations [see section 4a(5)] were tested with different options (Fig. 9), bringing the number of variations to 109. Some optimizations with no mutation were also performed as a reference. Along with variants of the other operators [see Horton (2012) for details], this resulted in 660 combinations (and so 6600 optimizations).

Figure 9 presents the results of this analysis, and illustrates the important role of mutation in the optimization performance. Configurations without mutation (the last box in Fig. 9) achieved an inferior level of performance compared to most mutation operators, and the magnitude of this operator influence was significantly higher than those of the other options. The details of the analysis (see Horton 2012) indicate that the other reproduction operators seem to be of secondary importance. This observation is in line with the conclusions reached by several other authors [see section 4a(5)].

The mutation operators based on variable normal or variable uniform laws performed particularly poorly here and were difficult to setup. Many operators presented more or less similar performance scores and required a variable amount of assessments. The

convergence analysis (see Horton 2012) highlighted the three best operators: nonuniform mutation, chromosome of adaptive search radius, and multiscale mutation. Thus, further optimizations (an additional 4950) were performed, using variants of these three operators (Figs. 10–13).

The first analysis was the optimization of the precipitation prediction over a subcatchment (the Binn-Simplon region) in the Swiss Alps (Fig. 10). The optimizer also chose the two pressure levels of the atmospheric circulation analogy (this method has a single level of analogy). The resulting CRPSS performance score (see section 3) was obviously superior to that obtained using the sequential calibration (bottom line in Fig. 10). For most options, it also achieved slightly better results than the optimization without the selection of the pressure levels (dashed line). A clear breakthrough in performance was not expected, as the former selection of pressure levels is the result of intensive comparative work (Bontron 2004). However, this application demonstrates that when correctly configured, GAs can automatically and successfully choose the pressure levels. However, the automatic selection of the pressure levels significantly increased the difficulty for the GAs to converge to a unique solution, ideally the global optimum. A likely explanation for this is that the pressure levels were considered to be categorical values within the optimization (sampled with a uniform law), and thus the approaches relying on a distance in the parameters space, such as the search radius, could not fully exploit the properties that made them efficient. However, even though the results exhibit a certain variability, most of

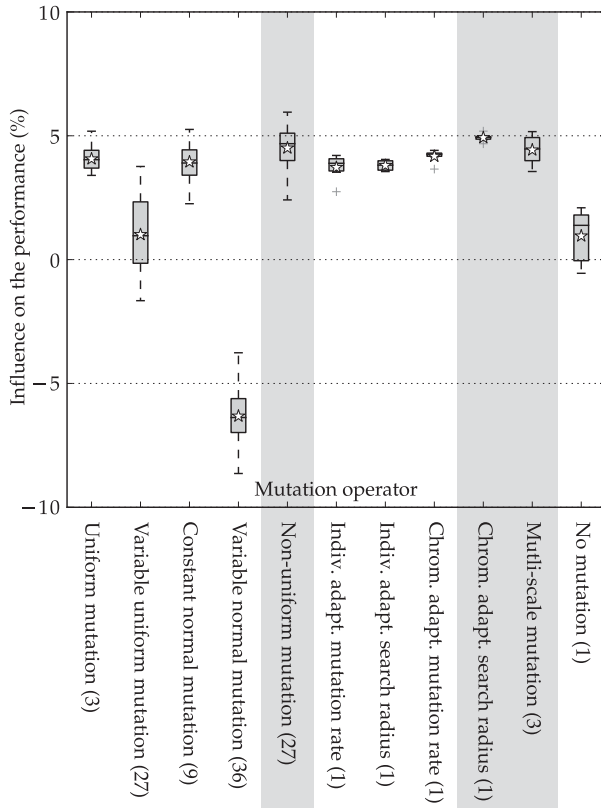


FIG. 9. Influence of the mutation operators [section 4a(5)] on the optimization performance. In parentheses is shown the number of variants considered (combination of options). The same conventions apply as in Fig. 7.

them present very good performance scores, despite different selections of the AM parameters.

The same experiment was performed for another region (Swiss Chablais; see Fig. 1), which is sensitive to other meteorological influences (Fig. 11), in order to assess the eventual dependencies of the operators with the predictand. Even though differences can be observed with Fig. 10, the same options perform better globally.

Next, a second level of analogy was introduced (Fig. 12), based on moisture variables (see section 3). The GAs had to optimize both levels of analogy (geopotential heights and moisture index) simultaneously. Once again, the results were better than those for the sequential calibration (bottom line in Fig. 12). Finally, a preselection based on air temperature was added, instead of the fixed calendar window, as proposed by Ben Daoud et al. (2016). The results showed generally higher scores (Fig. 13), demonstrating the success of the optimizer in taking advantage of this new degree of freedom, and its ability to handle the optimization of three analogy levels simultaneously. Again, the most relevant options were the same globally.

Following these various tests of the relevance of the mutation operators, the following advice can be presented (detailed options are provided in section 6a):

- *Nonuniform mutation*—this operator performed well in terms of convergence, mainly when the number of parameters to optimize was rather low. However, the number of required evaluations can be fairly substantial. The main disadvantage of the nonuniform mutation is the number of parameters it requires, which is difficult to estimate a priori. The mutation rate was found to be more important than for the others. The difficulty is that its optimal value may be case related.
- *Chromosome of adaptive search radius*—unlike in the above case, this proposed operator is very robust, as it requires no options and is autoadapting. It is interesting to note that the insertion of an extra chromosome representing the search radius resulted in better performance than other self-adaptive operators (such as the chromosome of adaptive mutation rate). If one had to choose a single option for the mutation operator, we would recommend this one, as it was proven effective and requires no parameter.
- *Multiscale mutation*—finally, the multiscale mutation, which also performed fairly well, requires one parameter, the mutation rate. However, it can also be difficult to estimate a correct value a priori.

For this application, the mutation operator has a leading effect and should be chosen with care. It may be wise to perform multiple optimizations, and to consider these three operators in parallel, in order to obtain results from options that are sometimes either more efficient or more robust. It is interesting to note that the three best techniques incorporate a notion of search distance. It is likely that this notion is the key to these algorithms in this application, and allows them to initially explore the parameter space and then converge. In fact, the search radius directly represents the notion of transition between exploration and exploitation, in our opinion more than a possible evolution of mutation rates.

3) OTHER OPTIONS

The analysis of the natural selection operator (Fig. 14) revealed a slight preference for ratio elitism compared to the tournament selection [section 4a(2)], but this was not very significant. This operator, or at least the two assessed versions, did not appear to significantly influence the optimization performance.

The size of the population (N , the number of initial parameter sets) had an effect on the optimization performance (Fig. 15). A bigger population led to better results, but also to longer optimizations. The required

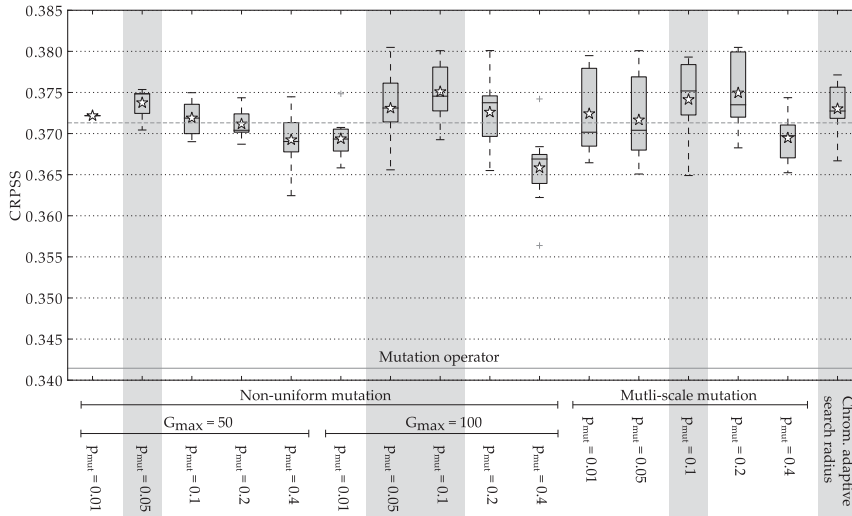


FIG. 10. Influence of the mutation options [section 4a(5)] on the optimization performance, letting the optimizer choose the pressure level of the atmospheric circulation analogy (single level of analogy). For the nonuniform mutation, $\omega = 0.1$ in every case. The continuous bottom line represents the score of the sequential calibration, and the dashed superior line is the score of the optimization without automatic selection of the pressure levels. The same conventions apply as in Fig. 7.

number of evaluations, and thus the required time, was approximately proportional to the population size. Thus, if the population size doubled, then the time required for the optimization also nearly doubled (e.g., for a 5-yr calibration period, approximately 4 h of CPU time was required when $N = 50$, and 14 h of CPU time when $N = 200$). The optimal size seems to depend on the complexity of the AM to be optimized. A more complex AM (i.e., with more degrees of freedom) requires a bigger population size. A rule of thumb based on a

limited number of case studies (not presented here) is provided as follows:

- $N \approx 100$ for very simple AM implementations (one level of analogy with two pressure levels),
- $N \approx 200$ for a slightly more complex AM (one level of analogy with four pressure levels or two levels of analogy with fewer pressure levels), and
- $N \approx 500$ for significantly more complex AMs (two or three levels of analogy with four pressure levels for the

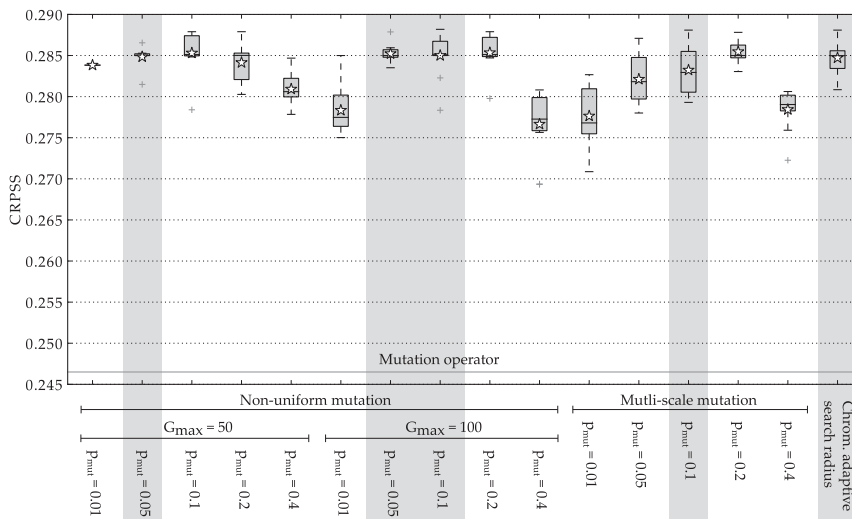


FIG. 11. As in Fig. 10, but for another region in the Swiss Alps (Swiss Chablais), with different atmospheric influences.

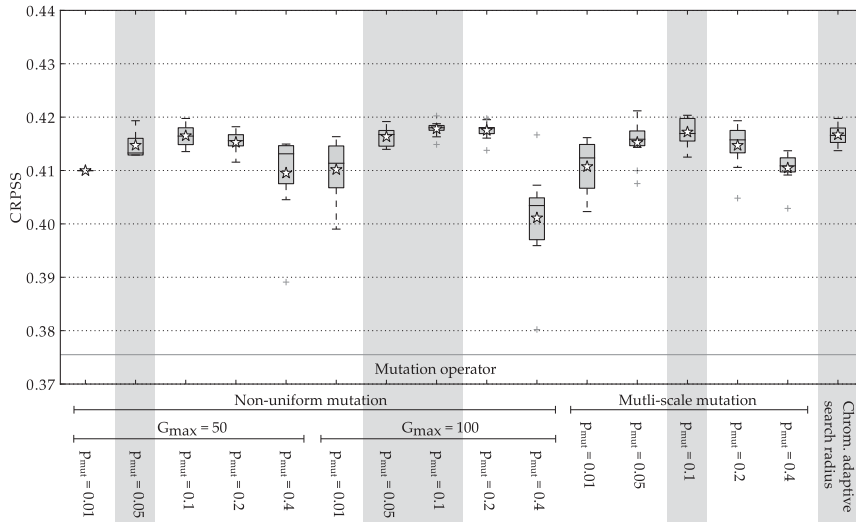


FIG. 12. As in Fig. 10, but with a second level of analogy on moisture variables.

atmospheric circulation and two to four levels for the moisture analogy).

The influence of the size of the IG (proportion of the total population) selected for mating was also assessed (Fig. 16). This option had little influence on the performance of the optimizations. A value of 50% seems to be a wise choice.

6. Use of GAs to optimize AMs

a. Recommended configuration of GAs

Optimizations using GAs of AMs of varying complexities were performed with a large number of

combinations of operators, in order to make recommendations for optimizing AMs (see section 5). The conclusions are as follows:

- The population size should be in accordance with the complexity of the AM to be optimized, ranging from 100 for simple cases up to 500 for the most complex AMs.
- The value of the IG ratio is not significantly important. A value of 50% seems appropriate.
- Ratio elitism performs slightly better than tournaments for the natural selection operator, but this is not decisive.
- The performance levels of the operators for the couples selection are relatively similar. The roulette

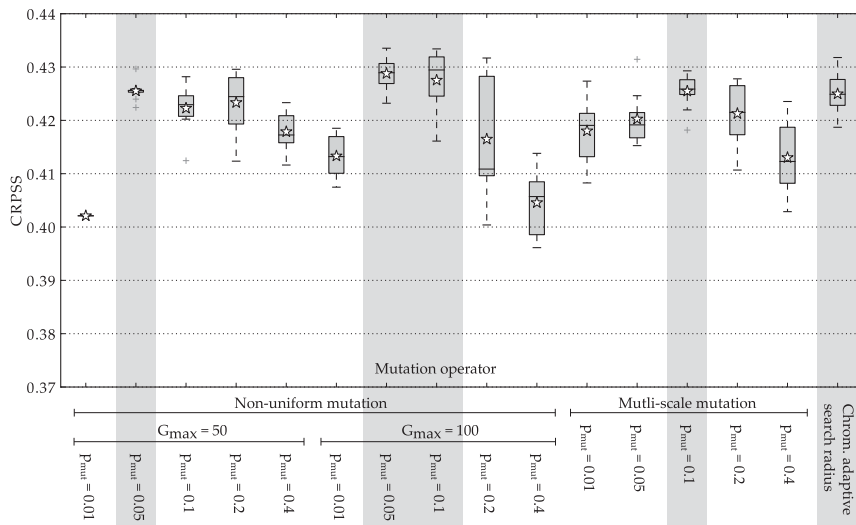


FIG. 13. As in Fig. 12, but with a preselection on air temperature rather than a fixed calendar window.

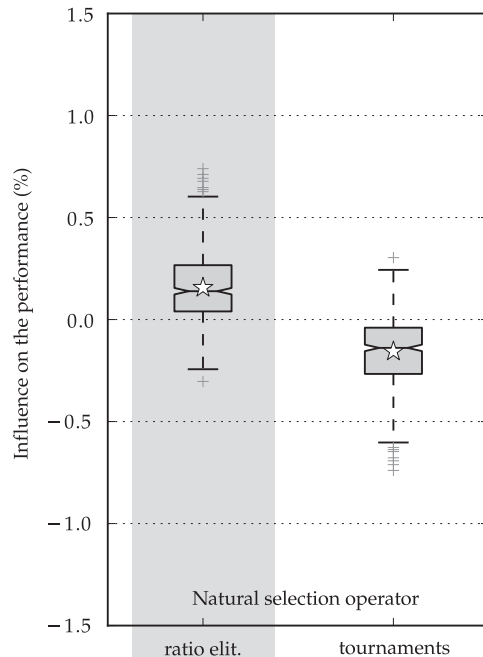


FIG. 14. Influence of the natural selection operators on the optimization performance. The same conventions apply as in Fig. 7.

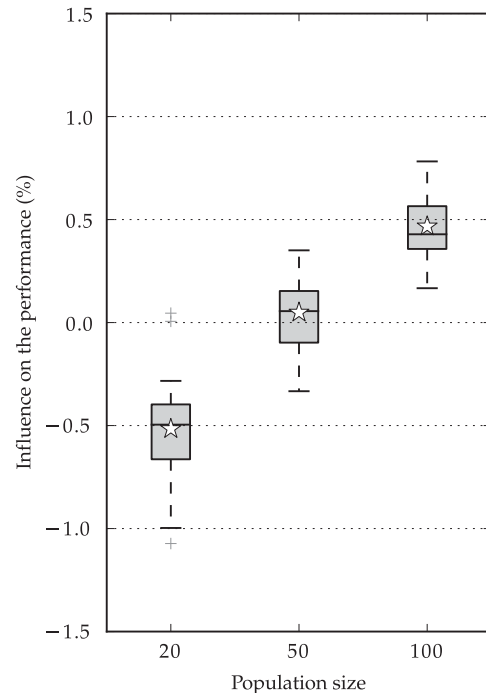


FIG. 15. Influence of the population size on the optimization performance. The same conventions apply as in Fig. 7.

wheel weighting and the tournament selection are more efficient in terms of the convergence and the required number of evaluations.

- Most of the crossover operators yield a relatively similar level of performance, but the binarylike crossover with two points of intersection is slightly better, especially in terms of convergence.
- Mutation clearly yields a dominant influence. Three mutation operators stand out—the nonuniform mutation, multiscale mutation, and chromosome of adaptive search radius. The latter is the most robust, as it has no controlling parameter.

The optimization did not systematically converge to the global optimum (but often came close to it), which is why it is recommended to perform several optimizations in parallel in order to compare the results, analyze the convergence, and keep the best configuration. It may be wise to consider the three mutation operators in parallel. To be confident in the optimized AMs, we propose using a set of the following mutation operators, where p_{mut} is the mutation rate (or mutation probability), $G_{m,r}$ is the maximum number of generations during which the magnitude of the research varies, and ω is a threshold chosen by the user in order to maintain a minimum search radius when the number of generations $G > G_{m,r}$:

- the nonuniform mutation once, with $p_{\text{mut}} = 0.05$, $G_{m,r} = 50$, and $\omega = 0.1$;

- the nonuniform mutation once, with $p_{\text{mut}} = 0.05$, $G_{m,r} = 100$, and $\omega = 0.1$;
- the nonuniform mutation once, with $p_{\text{mut}} = 0.1$, $G_{m,r} = 100$, and $\omega = 0.1$;
- the multiscale mutation once, with $p_{\text{mut}} = 0.1$; and
- the chromosome of adaptive search radius twice.

b. Illustration of application

To illustrate the achievable gain when using GAs on an AM, precipitation prediction for the southeast ridge region of the alpine Rhône catchment (Fig. 1) was optimized for the whole calibration period (40 yr during the period 1961–2008, with 8 yr omitted for validation), instead of the smaller 5-yr period.

The optimizer could select geopotential heights at four pressure levels, at any time of day, across unconstrained spatial windows. Moreover, a weighting was introduced to the combination of the criteria processed on each pressure level (such as in Horton 2012; Junk et al. 2015b). In this case, no new meteorological variable was added, and the method still contained a unique level of analogy.

The performance (CRPSS) of the reference method, calibrated by means of the sequential procedure, amounts to 32.00%, with a 0.95 confidence interval (assessed by bootstrapping on 10 000 samples) of (29.21%, 34.94%). The method optimized by means of

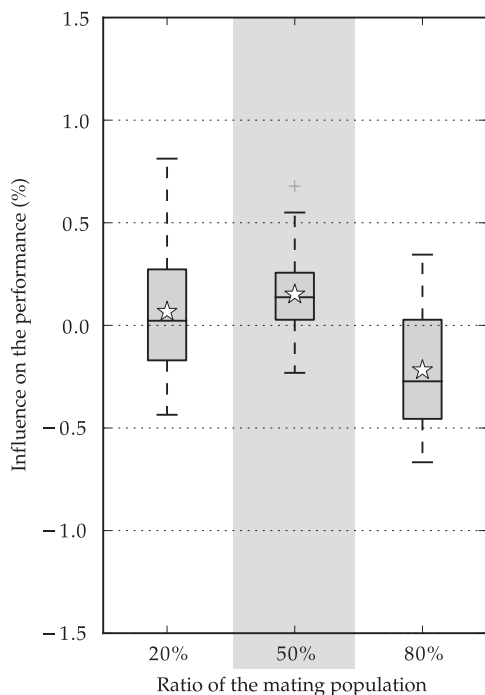


FIG. 16. Influence of the IG ratio on the optimization performance. The same conventions apply as in Fig. 7.

GAs achieved a performance of 37.62%, with a 0.95 confidence interval of (35.21%, 40.11%). Thus, the resulting gain is statistically significant. The results across all subregions and the physical meaning of the optimized parameters will be discussed in a forthcoming paper.

7. Conclusions

To automatically optimize several AM variants, and to avoid the limitations of the usual sequential calibration, GAs were evaluated. Given the large number of existing operators and options, multiple variants were assessed systematically in order to identify which operators are important, and which variants perform best for the considered AM implementations. The mutation operator was identified as a key element for this application, and new variants were developed that proved efficient, such as the chromosome of adaptive search radius, which is considerably more robust (with no control parameter). Recommendations were established for the relevant employment of GAs for optimizing AMs. Although using GAs to optimize AMs may be computationally intensive, once an AM is calibrated, its use in real-time operations is very fast and lightweight.

The possibility that a different global optimization method or other operators of GAs may perform even better cannot be excluded. Still, the relevance of global optimization techniques for AMs has now been proven,

as they provide relevant AM parameters that are automatically, globally, and objectively established. A global optimization is the only way to take into account all of the dependencies between parameters and levels of analogy.

The global optimization approach allows the easy adaptation of AMs to new regions by potentially taking into account local meteorological influences, and thus has a significant potential for application. Moreover, it can be employed to automatically explore new datasets, in order to extract the most relevant variables. Thus, this method can make it easier to assess other predictands, such as the temperature, limit of snowfall, or occurrence of hail, while allowing the algorithms to select the best variables and associated parameters.

Acknowledgments. Thanks to Hamid Hussain-Khan of the University of Lausanne for his help and availability, and for the intensive use of the cluster he is in charge of. Thanks to Dominique Béro for his support and to Michel Bierlaire for his advice regarding optimization methods. This research has been initiated within the Modélisation des Intempéries de Nature Extrême des Rivières Valaisannes et de leurs Effets (MINERVE) project, financed by the Roads and Water Courses Service; Energy and Water Power Service of the Wallis Canton; the Water, Land and Sanitation Service of the Vaud Canton; and the Swiss Federal Office for Environment (FOEV). The present work has been performed after the project and was supported by the University of Lausanne and partially self-financed by the authors. The fruitful collaboration with the Laboratoire d'Etude des Transferts en Hydrologie et Environnement of the Grenoble Institute of Technology (G-INP) was made possible thanks to the Herbet Foundation. NCEP reanalysis data were provided by the NOAA/OAR/ESRL PSD, Boulder, Colorado, via their website (<http://www.esrl.noaa.gov/psd/>). Precipitation time series were provided by MeteoSwiss. The authors would also like to acknowledge the suggestions and comments from the anonymous reviewers, which contributed to improving this paper.

REFERENCES

- Alessandrini, S., L. Delle Monache, S. Sperati, and G. Cervone, 2015a: An analog ensemble for short-term probabilistic solar power forecast. *Appl. Energy*, **157**, 95–110, doi:10.1016/j.apenergy.2015.08.011.
- , —, —, and J. N. Nissen, 2015b: A novel application of an analog ensemble for short-term wind power forecasting. *Renewable Energy*, **76**, 768–781, doi:10.1016/j.renene.2014.11.061.
- Bäck, T., 1992a: Self-adaptation in genetic algorithms. *Proceedings of the First European Conference on Artificial Life*, Paris, France, Int. Society on Artificial Life, 263–271.

- , 1992b: The interaction of mutation rate, selection, and self-adaptation within a genetic algorithm. *Proc. Second Conf. on Parallel Problem Solving in Nature*, Brussels, Belgium, Int. Society on Artificial Life, 85–94.
- , 1996: Evolution strategies: An alternative evolutionary algorithm. *Artificial Evolution*, J.-M. Alliot et al., Eds., Lecture Notes in Computer Science, Vol. 1036, 3–20, doi:10.1007/3-540-61108-8_27.
- , and H.-P. Schwefel, 1993: An overview of evolutionary algorithms for parameter optimization. *Evol. Comput.*, **1**, 1–23, doi:10.1162/evco.1993.1.1.1.
- , and M. Schütz, 1996: Intelligent mutation rate control in canonical genetic algorithms. *Foundation of Intelligent Systems: Ninth International Symposium*, Z. W. Raś and M. Michalewicz, Eds., Lecture Notes in Computer Science, Vol. 1079, 158–167, doi:10.1007/3-540-61286-6_141.
- Beasley, D., R. Martin, and D. Bull, 1993: An overview of genetic algorithms: Part 1. Fundamentals. *Univ. Comput.*, **15**, 58–69.
- Beasley, J., and P. Chu, 1996: A genetic algorithm for the set covering problem. *Eur. J. Oper. Res.*, **94**, 392–404, doi:10.1016/0377-2217(95)00159-X.
- Ben Daoud, A., 2010: Améliorations et développements d'une méthode de prévision probabiliste des pluies par analogie. Ph.D. thesis, Université de Grenoble, 299 pp. [Available online at https://tel.archives-ouvertes.fr/file/index/docid/483080/filename/These_BENDAOUD_VF.pdf.]
- , E. Sauquet, M. Lang, C. Obled, and G. Bontron, 2008: La prévision des précipitations par recherche d'analogues: État de l'art et perspectives. *Houille Blanche*, No. 6, Société Hydrotechnique de France, Paris, France, 60–65, doi:10.1051/lhb/2009079.
- , —, G. Bontron, C. Obled, and M. Lang, 2016: Daily quantitative precipitation forecasts based on the analogue method: improvements and application to a French large river basin. *Atmos. Res.*, **169**, 147–159, doi:10.1016/j.atmosres.2015.09.015.
- Bessa, R., A. Trindade, C. S. Silva, and V. Miranda, 2015: Probabilistic solar power forecasting in smart grids using distributed information. *Int. J. Electr. Power Energy Syst.*, **72**, 16–23, doi:10.1016/j.ijepes.2015.02.006.
- Bliefert, J., 2010: Probability forecasts of daily areal precipitation for small river basins. Ph.D. thesis, Universität Stuttgart, 167 pp. [Availability online at <http://elib.uni-stuttgart.de/handle/11682/378>.]
- Bois, P., C. Obled, and J. Thalamy, 1981: Etude des liaisons entre champs de pression et températures sur l'Europe avec la durée d'insolation: Application à la possibilité de la prévision d'insolation. *C.R. du colloque Météorologie de l'énergie solaire*, Toulouse, France, PIRDES-CNRS, 145–177.
- Bolognesi, R., 1993: Premiers développements d'un modèle hybride pour le diagnostic spatial des risques d'avalanches. *Houille Blanche*, No. 8, Société Hydrotechnique de France, Paris, France, 551–553, doi:10.1051/lhb/1993045.
- Bontron, G., 2004: Prévision quantitative des précipitations: Adaptation probabiliste par recherche d'analogues. Utilisation des Réanalyses NCEP/NCAR et application aux précipitations du Sud-Est de la France. Ph.D. thesis, Institut National Polytechnique de Grenoble, 262 pp. [Available online at <https://hal.inria.fr/LTHE/tel-01090969v1>.]
- , and C. Obled, 2005: L'adaptation probabiliste des prévisions météorologiques pour la prévision hydrologique. *Houille Blanche*, No. 1, Société Hydrotechnique de France, Paris, France, 23–28, doi:10.1051/lhb:200501002.
- Brown, T., 1974: Admissible scoring systems for continuous distributions. Rand Corporation Rep. P-5235, 24 pp. [Available online at <https://www.rand.org/content/dam/rand/pubs/papers/2008/P5235.pdf>.]
- Caillouet, L., J.-P. Vidal, E. Sauquet, and B. Graff, 2016: Probabilistic precipitation and temperature downscaling of the Twentieth Century Reanalysis over France. *Climate Past*, **12**, 635–662, doi:10.5194/cp-12-635-2016.
- Chardon, J., B. Hingray, A.-C. Favre, P. Autin, J. Gailhard, I. Zin, and C. Obled, 2014: Spatial similarity and transferability of analog dates for precipitation downscaling over France. *J. Climate*, **27**, 5056–5074, doi:10.1175/JCLI-D-13-00464.1.
- Costa, C. B., M. R. W. Maciel, and R. M. Filho, 2005: Factorial design technique applied to genetic algorithm parameters in a batch cooling crystallization optimisation. *Comput. Chem. Eng.*, **29**, 2229–2241, doi:10.1016/j.compchemeng.2005.08.005.
- , E. C. Rivera, M. C. A. F. Rezende, M. R. W. Maciel, and R. M. Filho, 2007: Prior detection of genetic algorithm significant parameters: Coupling factorial design technique to genetic algorithm. *Chem. Eng. Sci.*, **62**, 4780–4801, doi:10.1016/j.ces.2007.03.042.
- Dayon, G., J. Boé, and E. Martin, 2015: Transferability in the future climate of a statistical downscaling method for precipitation in France. *J. Geophys. Res. Atmos.*, **120**, 1023–1043, doi:10.1002/2014JD022236.
- Deb, K., and H. Beyer, 1999: Self-adaptation in real-parameter genetic algorithms with simulated binary crossover. *Proc. Genetic and Evolutionary Computation Conf.*, Orlando, FL, ACM Special Interest Group on Genetic and Evolutionary Computation, 172–179. [Available online at <http://ls11-www.informatik.uni-dortmund.de/~beyer/coll/DB99/final.ps>.]
- , and —, 2001: Self-adaptive genetic algorithms with simulated binary crossover. *Evol. Comput.*, **9**, 197–221, doi:10.1162/106365601750190406.
- De Jong, K. A., 1975: Analysis of the behavior of a class of genetic adaptive systems. Ph.D. thesis, University of Michigan, 256 pp. [Available online at <https://deepblue.lib.umich.edu/handle/2027.42/4507>.]
- Delle Monache, L., T. Nipen, Y. Liu, G. Roux, and R. Stull, 2011: Kalman filter and analog schemes to postprocess numerical weather predictions. *Mon. Wea. Rev.*, **139**, 3554–3570, doi:10.1175/2011MWR3653.1.
- , F. A. Eckel, D. L. Rife, B. Nagarajan, and K. Searight, 2013: Probabilistic weather prediction with an analog ensemble. *Mon. Wea. Rev.*, **141**, 3498–3516, doi:10.1175/MWR-D-12-00281.1.
- Drosowsky, W., and H. Zhang, 2003: Verification of spatial fields. *Forecast Verification: A Practitioner's Guide in Atmospheric Science*, I. T. Jolliffe and D. B. Stephenson, Eds., John Wiley and Sons, 121–136.
- Duband, D., 1970: Reconnaissance dynamique de la forme des situations météorologiques. Application à la prévision quantitative des précipitations. Ph.D. thesis, Faculté des sciences de Paris, 95 pp.
- Fogarty, T. C., 1989: Varying the probability of mutation in the genetic algorithm. *Proc. Third Int. Conf. on Genetic Algorithms*, Fairfax, VA, ACM, 104–109.
- Fraedrich, K., C. C. Raible, and F. Sielmann, 2003: Analog ensemble forecasts of tropical cyclone tracks in the Australian region. *Wea. Forecasting*, **18**, 3–11, doi:10.1175/1520-0434(2003)018<0003:AEFOTC>2.0.CO;2.
- Gaffney, J., C. Pearce, and D. Green, 2010: Binary versus real coding for genetic algorithms: A false dichotomy? *Aust. N.Z. Indust. Appl. Math. J.*, **51**, 347–359, doi:10.21914/anziamj.v51i0.2776.

- García Hernández, J., P. Horton, C. Tobin, and J. Boillat, 2009: MINERVE 2010: Prévision hydrométéorologique et gestion des crues sur le Rhône alpin. *Wasser Energie Luft*, **4**, 297–302.
- Gibergans-Báguena, J., and M. Llasat, 2007: Improvement of the analog forecasting method by using local thermodynamic data: Application to autumn precipitation in Catalonia. *Atmos. Res.*, **86**, 173–193, doi:10.1016/j.atmosres.2007.04.002.
- Glahn, H., and D. Lowry, 1972: The use of model output statistics (MOS) in objective weather forecasting. *J. Appl. Meteor.*, **11**, 1203–1211, doi:10.1175/1520-0450(1972)011<1203:TUOMOS>2.0.CO;2.
- Goldberg, D. E., 1989: *Genetic Algorithms in Search, Optimization and Machine Learning*. Addison-Wesley, 432 pp.
- , 1991: Real-coded genetic algorithms, virtual alphabets, and blocking. *Complex Syst.*, **5**, 139–167.
- Gordon, N. D., 1987: Statistical very short-range forecasting via analogues. *Proc. Symp. on Mesoscale Analysis and Forecasting*, ESA SP-282, European Space Agency, 307–312.
- Grefenstette, J. J., 1986: Optimization of control parameters for genetic algorithms. *IEEE Trans. Syst. Man Cybern.*, **16**, 122–128, doi:10.1109/TSMC.1986.289288.
- Guilbaud, S., 1997: Prévision quantitative des précipitations journalières par une méthode statistico-dynamique des recherche d'analogues—Application à des bassins du pourtour méditerranéen. Ph.D. thesis, Institut National Polytechnique de Grenoble, 386 pp. [Available online at https://tel.archives-ouvertes.fr/tel-01090981/file/These_Guilbaud-1997.pdf.]
- , and C. Obled, 1998: Prévision quantitative des précipitations journalières par une technique de recherche de journées antérieures analogues: Optimisation du critère d'analogie. *C. R. Acad. Sci., Ser. IIA, Earth Planet. Sci.*, **327**, 181–188.
- Hamill, T. M., and J. S. Whitaker, 2006: Probabilistic quantitative precipitation forecasts based on reforecast analogs: Theory and application. *Mon. Wea. Rev.*, **134**, 3209–3229, doi:10.1175/MWR3237.1.
- , M. Scheuerer, and G. T. Bates, 2015: Analog probabilistic precipitation forecasts using GEFS reforecasts and climatology-calibrated precipitation analyses. *Mon. Wea. Rev.*, **143**, 3300–3309, doi:10.1175/MWR-D-15-0004.1.
- Hart, W. E., and R. K. Belew, 1991: Optimizing an arbitrary function is hard for the genetic algorithm. *Proc. Fourth Int. Conf. on Genetic Algorithms*, San Diego, CA, ACM, 190–195.
- Haupt, R. L., and S. E. Haupt, 2004: *Practical Genetic Algorithms*. John Wiley and Sons, 272 pp.
- Herrera, F., M. Lozano, and J. Verdegay, 1998: Tackling real-coded genetic algorithms: Operators and tools for behavioural analysis. *Artif. Intell. Rev.*, **12**, 265–319, doi:10.1023/A:1006504901164.
- Hersbach, H., 2000: Decomposition of the continuous ranked probability score for ensemble prediction systems. *Wea. Forecasting*, **15**, 559–570, doi:10.1175/1520-0434(2000)015<0559:DOTCRP>2.0.CO;2.
- Holland, J., 1992: Genetic algorithms. *Sci. Amer.*, **267**, 66–72, doi:10.1038/scientificamerican0792-66.
- Horton, P., 2012: Améliorations et optimisation globale de la méthode des analogues pour la prévision statistique des précipitations. Développement d'un outil de prévision et application opérationnelle au bassin du Rhône à l'amont du Léman. Ph.D. thesis, Université de Lausanne, 320 pp. [Available online at <https://tel.archives-ouvertes.fr/tel-01441762>.]
- , M. Jaboyedoff, R. Metzger, C. Obled, and R. Marty, 2012: Spatial relationship between the atmospheric circulation and the precipitation measured in the western Swiss Alps by means of the analogue method. *Nat. Hazard Earth Sys.*, **12**, 777–784, doi:10.5194/nhess-12-777-2012.
- Joines, J., C. Culbreth, and R. King, 1996: Manufacturing cell design: An integer programming model employing genetic algorithms. *IIE Trans.*, **28**, 69–85, doi:10.1080/07408179608966253.
- Junk, C., L. Delle Monache, and S. Alessandrini, 2015a: Analog-based ensemble model output statistics. *Mon. Wea. Rev.*, **143**, 2909–2917, doi:10.1175/MWR-D-15-0095.1.
- , —, —, G. Cervone, and L. Von Bremen, 2015b: Predictor-weighting strategies for probabilistic wind power forecasting with an analog ensemble. *Meteor. Z.*, **24**, 361–379, doi:10.1127/metz/2015/0659.
- Kalnay, E., and Coauthors, 1996: The NCEP/NCAR 40-Year Reanalysis Project. *Bull. Amer. Meteor. Soc.*, **77**, 437–471, doi:10.1175/1520-0477(1996)077<0437:TNYRP>2.0.CO;2.
- Keenan, T. D., and F. Woodcock, 1981: Objective tropical cyclone movement forecasts using synoptic and track analogue information. Bureau of Meteorology Tech. Rep. 121, 7 pp.
- Klein, W., 1963: Specification of precipitation from the 700-millibar circulation. *Mon. Wea. Rev.*, **91**, 527–536, doi:10.1175/1520-0493(1963)091<0527:SOPFTC>2.3.CO;2.
- Kruizinga, S., and A. Murphy, 1983: Use of an analogue procedure to formulate objective probabilistic temperature forecasts in the Netherlands. *Mon. Wea. Rev.*, **111**, 2244–2254, doi:10.1175/1520-0493(1983)111<2244:UOAAPT>2.0.CO;2.
- Lorenz, E., 1956: Empirical orthogonal functions and statistical weather prediction. Dept. of Meteorology Sci. Rep. 1, Massachusetts Institute of Technology, 49 pp. [Available online at <http://www.o3d.org/abracco/Atlantic/Lorenz1956.pdf>.]
- , 1969: Atmospheric predictability as revealed by naturally occurring analogues. *J. Atmos. Sci.*, **26**, 636–646, doi:10.1175/1520-0469(1969)26<636:APARBN>2.0.CO;2.
- Mariano, A., C. Costa, D. de Angelis, D. Pires Atala, F. Maugeri Filho, M. Wolf Maciel, and R. Maciel Filho, 2010: Genetic algorithms (binary and real codes) for the optimisation of a fermentation process for butanol production. *Int. J. Chem. React. Eng.*, **8**, doi:10.2202/1542-6580.2333.
- Marty, R., I. Zin, C. Obled, G. Bontron, and A. Djerboua, 2012: Toward real-time daily QPPF by an analog sorting approach: Application to flash-flood catchments. *J. Appl. Meteor. Climatol.*, **51**, 505–520, doi:10.1175/JAMC-D-11-011.1.
- Matheson, J., and R. Winkler, 1976: Scoring rules for continuous probability distributions. *Manage. Sci.*, **22**, 1087–1096, doi:10.1287/mnsc.22.10.1087.
- Michalewicz, Z., 1996: *Genetic Algorithms + Data Structures = Evolution Programs*. 3rd ed. Springer-Verlag, 387 pp.
- Nelder, J., and R. Mead, 1965: A simplex method for function minimization. *Comput. J.*, **7**, 308–313, doi:10.1093/comjnl/7.4.308.
- Obled, C., and W. Good, 1980: Recent developments of avalanche forecasting by discriminant analysis techniques: A methodological review and some applications to the Parsenn area (Davos, Switzerland). *J. Glaciol.*, **25**, 315–346.
- , G. Bontron, and R. Garçon, 2002: Quantitative precipitation forecasts: A statistical adaptation of model outputs through an analogues sorting approach. *Atmos. Res.*, **63**, 303–324, doi:10.1016/S0169-8095(02)00038-8.
- Radanovics, S., J.-P. Vidal, E. Sauquet, A. Ben Daoud, and G. Bontron, 2013: Optimising predictor domains for spatially coherent precipitation downscaling. *Hydrol. Earth Syst. Sci.*, **17**, 4189–4208, doi:10.5194/hess-17-4189-2013.

- Radcliffe, N., 1991: Forma analysis and random respectful combinations. *Proc. Fourth Int. Conf. on Genetic Algorithms*, San Diego, CA, ACM, 222–229.
- Radinović, D., 1975: An analogue method for weather forecasting using the 500/1000 mb relative topography. *Mon. Wea. Rev.*, **103**, 639–649, doi:[10.1175/1520-0493\(1975\)103<0639:AAMFWF>2.0.CO;2](https://doi.org/10.1175/1520-0493(1975)103<0639:AAMFWF>2.0.CO;2).
- Rechenberg, I., 1973: *Evolutionsstrategie: Optimierung technischer Systeme nach Prinzipien der biologischen Evolution*. Frommann-Holzboog, 170 pp.
- Schraudolph, N., and R. Belew, 1992: Dynamic parameter encoding for genetic algorithms. *Mach. Learn.*, **9** (1), 9–21.
- Schwefel, H.-P., 1981: *Numerical Optimization of Computer Models*. John Wiley and Sons, 389 pp.
- , 1995: *Evolution and Optimum Seeking*. Sixth Generation Computer Technologies Series, Book 4, John Wiley and Sons, 456 pp.
- Sievers, O., K. Fraedrich, and C. C. Raible, 2000: Self-adapting analog ensemble predictions of tropical cyclone tracks. *Wea. Forecasting*, **15**, 623–629, doi:[10.1175/1520-0434\(2000\)015<0623:SAEPO>2.0.CO;2](https://doi.org/10.1175/1520-0434(2000)015<0623:SAEPO>2.0.CO;2).
- Smith, J., and T. Fogarty, 1997: Operator and parameter adaptation in genetic algorithms. *Soft Comput.*, **1** (2), 81–87.
- Syswerda, G., 1989: Uniform crossover in genetic algorithms. *Proc. Third Int. Conf. on Genetic Algorithms*, Fairfax, VA, ACM, 2–9.
- Teweles, S., and H. B. Wobus, 1954: Verification of prognostic charts. *Bull. Amer. Meteor. Soc.*, **35**, 455–463.
- Vallée, J. L., 1986: Précipitations sur le Sud-Ouest du Massif Central et l'Est des Pyrénées. Optimisation du modèle EDF/DTG de prévision par recherche d'analogues. Note de travail de l'ENM 181, Météo-France, Toulouse, France, 110 pp.
- Vanvyve, E., L. Delle Monache, A. J. Monaghan, and J. O. Pinto, 2015: Wind resource estimates with an analog ensemble approach. *Renewable Energy*, **74**, 761–773, doi:[10.1016/j.renene.2014.08.060](https://doi.org/10.1016/j.renene.2014.08.060).
- Wilson, L. J., and N. Yacowar, 1980: Statistical weather element forecasting in the Canadian Weather Service. *Proc. Symp. on Probabilistic and Statistical Methods in Weather Forecasting*, Nice, France, WMO, 401–406.
- Woodcock, F., 1980: On the use of analogues to improve regression forecasts. *Mon. Wea. Rev.*, **108**, 292–297, doi:[10.1175/1520-0493\(1980\)108<0292:OTUOAT>2.0.CO;2](https://doi.org/10.1175/1520-0493(1980)108<0292:OTUOAT>2.0.CO;2).
- Wright, A. H., 1991: Genetic algorithms for real parameter optimization. *Found. Genet. Algorithms*, **1**, 205–218, doi:[10.1016/B978-0-08-050684-5.50016-1](https://doi.org/10.1016/B978-0-08-050684-5.50016-1).
- Zitzler, E., M. Laumanns, and S. Bleuler, 2004: A tutorial on evolutionary multiobjective optimization. *Metaheuristics for Multiobjective Optimisation*, X. Gandibleux et al., Eds., Lecture Notes in Economics and Mathematical Systems, Vol. 535, 3–37, doi:[10.1007/978-3-642-17144-4_1](https://doi.org/10.1007/978-3-642-17144-4_1).