

Clinical Update

Subclinical thyroid dysfunction and cardiovascular diseases: 2016 update

Carmen Floriani¹, Baris Gencer², Tinh-Hai Collet^{3,4}, and Nicolas Rodondi^{1,5*}

¹Department of General Internal Medicine, Inselspital, Bern University Hospital, Freiburgstrasse 8, 3010 Bern, Switzerland; ²Cardiology Division, Geneva University Hospital, Rue Gabrielle-Perret-Gentil 4, 1205 Geneva, Switzerland; ³Service of Endocrinology, Diabetes and Metabolism, University Hospital of Lausanne, Av. de la Sallaz 8, 1011 Lausanne, Switzerland; ⁴University of Cambridge Metabolic Research Laboratories, Wellcome Trust-MRC Institute of Metabolic Science, Addenbrooke's Hospital, Hills Road, CB2 0QQ, Cambridge, UK; and ⁵Berner Institut für Hausarztmedizin BIHAM, Gesellschaftsstrasse 49, 3012 Bern, Switzerland

Received 21 April 2016; revised 8 July 2016; editorial decision 28 September 2016; accepted 26 January 2017; online publish-ahead-of-print 27 February 2017

Subclinical thyroid dysfunction comprises subclinical hypothyroidism (SHypo), defined as elevated thyroid-stimulating hormone (TSH) by normal free thyroxine (FT4), and subclinical hyperthyroidism (SHyper) with decreased or undetectable TSH and normal FT4. Up to 10% of the elderly have SHypo, which is usually asymptomatic. Individual participant data (IPD) analyses of prospective cohort studies from the international Thyroid Studies Collaboration show that SHypo is associated with increased coronary heart disease (CHD) mortality [hazard ratio (HR) 1.58 for TSH \geq 10 mIU/L, 95% CI 1.10–2.27], as well as increased risk of stroke, and heart failure (HF) for both higher and lower TSH. Small studies found that SHypo affects carotid intima media thickness (CIMT), diastolic function, peripheral vascular resistance, endothelial function, and lipid profile. SHyper is associated with increased risk of atrial fibrillation (AF) (HR 1.68, 95% CI 1.16–2.43) and CHD events (HR 1.21, 95% CI 0.99–1.46). The TSH threshold for initiating treatment is unclear. In the absence of large randomized controlled trials, the best evidence suggests SHypo therapy should be started at TSH \geq 10 mIU/L, and SHyper therapy at TSH $<$ 0.1 mIU/L. Recommendations on screening are discordant, but most guidelines advocate that thyroid function should be checked in those at risk for hypothyroidism, those over 60, and those with known CHD and HF. This review updates current evidence on the association between thyroid dysfunction and cardiovascular disease, as well as on screening and treatment of subclinical thyroid dysfunction.

Keywords

Subclinical hypothyroidism • Subclinical hyperthyroidism • TSH • Cardiovascular diseases • Screening • Treatment

Clinical and epidemiological relevance of subclinical thyroid dysfunction

Subclinical thyroid dysfunction comprises subclinical hypothyroidism (SHypo) and subclinical hyperthyroidism (SHyper). SHypo is defined as thyroid-stimulating-hormone (TSH) above the normal range, with normal free thyroxine (FT4).¹ SHypo can reach up to 10%, and is most prevalent among elderly women.² Recent data show that SHypo is associated with coronary heart disease (CHD),^{3–7} heart fail-

ure (HF),⁸ and stroke.⁹ Endogenous SHyper is defined as low or undetectable TSH, with FT4 and free triiodothyronine (FT3) within the reference range. SHyper is associated with increased CHD events, CHD mortality, and incident atrial fibrillation (AF).¹⁰ In the National Health and Nutrition Examination Survey III, 0.7% of participants had TSH $<$ 0.1 mIU/L and 1.8% $<$ 0.4 mIU/L.¹¹ The prevalence of SHyper depends on age, sex and iodine intake.¹² Exogenous SHyper is caused by thyroid hormone replacement in up to 20% of treated patients. A retrospective cohort study on levothyroxine prescription among 52 298 participants showed that after 5 years of treatment, 5.8% of participants had TSH $<$ 0.1 mIU/L.¹³

* Corresponding author. Tel: + 41 31 632 41 63, Fax: + 41 31 632 88 85, Email: Nicolas.Rodondi@insel.ch

Published on behalf of the European Society of Cardiology. All rights reserved. © The Author 2017. For permissions, please email: journals.permissions@oup.com.

Biochemical definition of subclinical thyroid dysfunction and variations according to population characteristics

Third generation TSH chemiluminometric assay is widely used and allows to detect changes of ~ 0.01 mIU/L. TSH within the hyperthyroid range can now reliably be distinguished from euthyroid, although there is still debate over the lower limit of the TSH reference range.¹⁴ For SHypo, controversy remains about the TSH range and upper limit.^{15–17} Most guidelines set an upper limit of 4.4–5.0 mIU/L, but the majority of euthyroid individuals fall between 0.4 and 2.5 mIU/L, depending on their iodine intake.^{2,18} Observational studies show that TSH tends to increase with age,^{19,20} which seems to be a physiological process and a marker of frailty rather than a pathological development. There might be a danger of SHypo overdiagnosis, especially in the elderly, but age-based cut-off points have not yet been standardized.²¹ The underlying mechanisms leading to overt hypothyroidism, characterized by TSH above and FT4 below the reference range, are still not clear, though, one study described the average yearly progression rate as ranging from 2 to 6%, depending on the presence of antithyroid peroxidase antibodies and on initial TSH.²²

General pathophysiological aspects

Each individual probably has a specific, genetically determined set point for the hypothalamic-pituitary-thyroid axis.^{23–25} A Danish twin study found heritability accounted for 64% of TSH variation (95% CI: 57–70%), 65% of FT4 variation (95% CI: 58–71%), and 64% of FT3 variation (95% CI: 57–70%).²⁵ FT4 plays the most important role in regulating TSH secretion (Figure 1). Minimal changes in FT4 have a strong effect on TSH secretion,²⁶ but the earlier description of the regulating mechanism as a log-linear relationship between TSH and FT4 has been challenged. Mathematical models show the relationship is better represented by two overlapping sigmoid curves, where TSH is expected to be higher for men and the elderly.²⁷ Symptoms of thyroid dysfunction are sometimes nonspecific: fatigue and depression are frequent, as are dyslipidaemia, weight gain, constipation. More extreme symptoms are pericardial effusion and myxoedema. Subjects with SHypo rarely report the full cluster of symptoms, but frequently report symptoms like tiredness,²⁸ cramps, weakness, and myalgia.²⁹ Clinical manifestation of SHyper is less pronounced than it is for overt hyperthyroidism (characterized by low or undetectable TSH and FT3/FT4 above the reference range). For SHyper, symptoms may be absent or similar to overt hyperthyroidism¹²: increased metabolic basal rate and thermogenesis (systemic symptoms),¹² sinus tachycardia, AF, congestive HF, and peripheral vasodilation with ankle oedema (cardiac symptoms).^{30,31}

Thyroid dysfunction and the heart: pathophysiological mechanisms

Peripheral deiodinases convert thyroxine to triiodothyronine, the active form of thyroid hormones. Within the cell, triiodothyronine is a

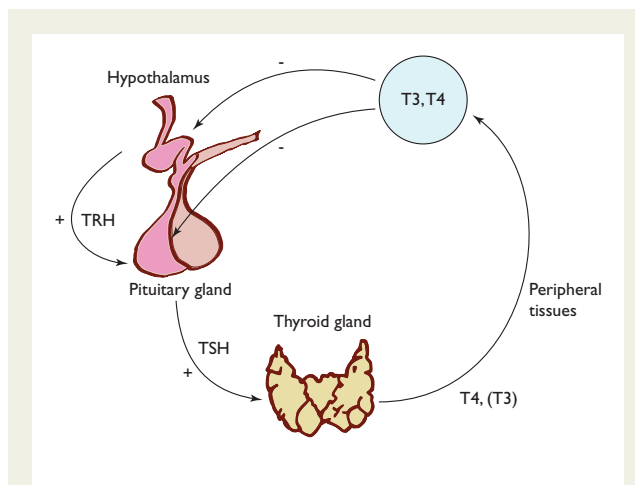
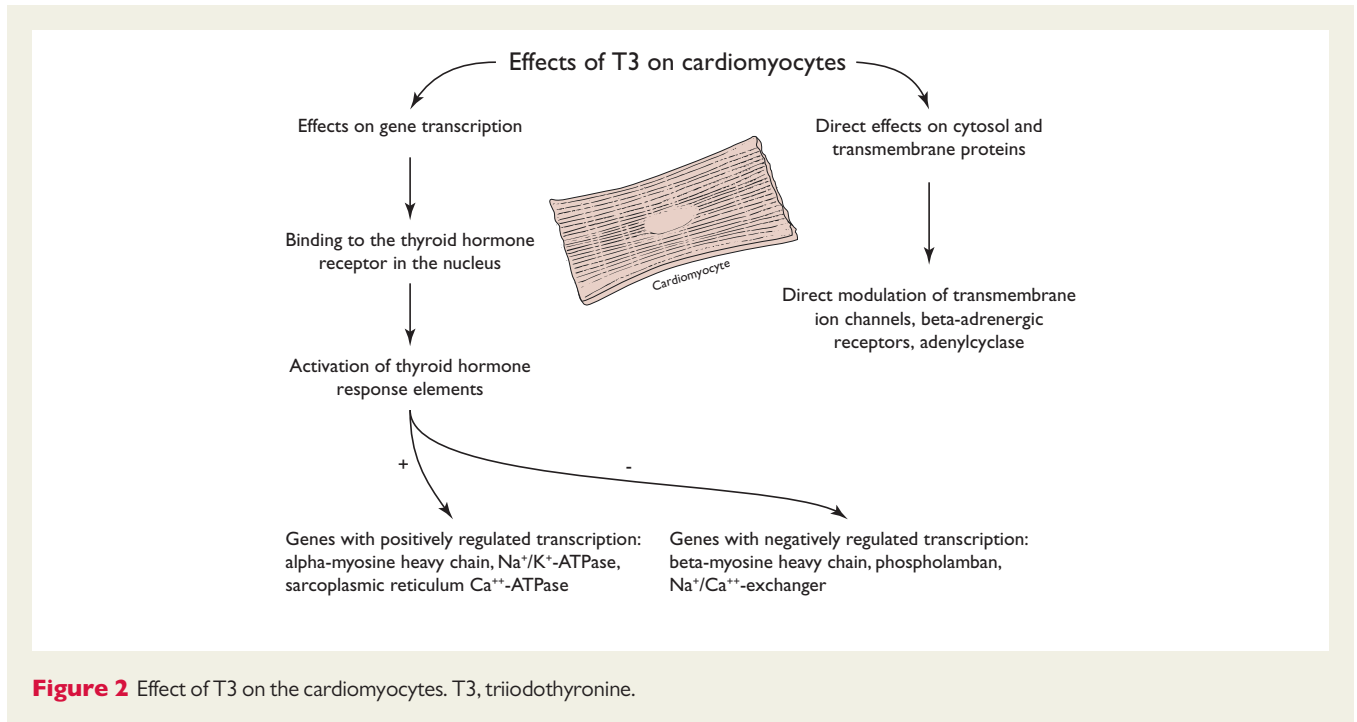


Figure 1 Simplified illustration of thyroid hormones homeostasis. TRH, thyrotropin-releasing hormone; TSH, thyroid-stimulating hormone; T4, thyroxine; T3, triiodothyronine.

transcriptional and extranuclear modulating factor that stimulates activity of cardiac myocytes and vascular smooth muscle cells. Triiodothyronine regulates the expression of structural and functional proteins, like calcium-activated ATPase and phospholamban, at DNA level.³² Triiodothyronine also regulates the intracellular calcium concentration, and determines systolic contractile function and diastolic relaxation. Triiodothyronine interacts directly with sodium, potassium, and calcium channels, modulating ionic exchange between intra- and extracellular compartments, and improving cardiac inotropy and chronotropy^{32,33} (Figure 2).

Overt hypothyroidism can cause cardiac anomalies, including (i) rhythmic disorders like bradycardia and atrioventricular block³⁰; (ii) myocardial abnormalities like impaired systolic function, increased left ventricular (LV) diastolic filling, diastolic dysfunction with impaired cardiac relaxation, pulmonary hypertension, atrial stiffness, pericardial effusion; and, (iii) vascular disturbances like endothelial dysfunction and arterial hypertension³³ (Figure 3). LV stroke volume can be decreased by bradycardia, increased diastolic pressure, atrial stiffness, and poor contractility, which can also aggravate HF.^{32,34} LV ejection fraction is the most widely reported outcome in studies on HF and CHD for risk stratification and medical decision.³⁵ Global heart function is the result of the interaction of myocardial contractility, preload (end-diastolic volume), heart rate, and afterload. Because half of patients with HF events have preserved ejection fraction, guidelines recommend to use additional endpoints of diastolic function and LV pressing filling, such as transmitral inflow patterns (E-, A-wave, and E/A), pulsed TVI-derived early diastolic velocity of the mitral annulus (E/e' ratio) and left atrial volume.³⁵

In SHypo anomalies are more common at higher TSH and among the elderly.³⁶ It is specifically associated with diastolic dysfunction. Case-control studies found patients with SHypo have prolonged Isovolumic Relaxation Time (IRT), increased A wave, and diminished E/A ratio.³⁶ In the Cardiovascular Health Study, the 3044 patients ≥ 65 years with TSH ≥ 10 mIU/L had higher baseline peak E velocity (0.80 m/s) than those with normal TSH (0.72 m/s, $P = 0.002$).³⁷ In addition, each 0.1 m/s increase in E wave velocity was associated with



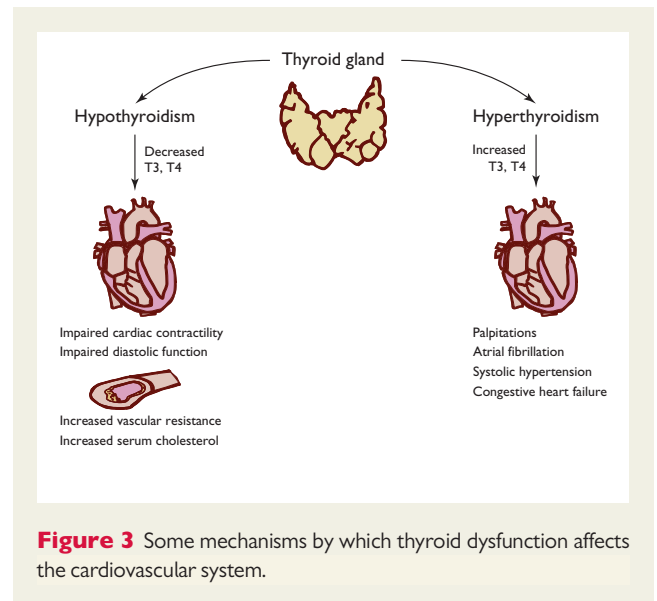
higher risk of HF events (HR 1.14, 95% CI 1.08–1.18, $P < 0.001$), especially with TSH ≥ 10 mIU/L (HR 1.45, 95% CI 1.20–1.76).³⁷

Overt hyperthyroidism affects the cardiac pacemaker function and contractility.^{31,38} SHyper, on the other hand, is associated with more premature atrial and ventricular beats, higher mean heart rate over 24 h,¹² and increased risk of AF.¹⁰ Cardiac changes in hyperthyroidism can be explained by the positive inotropic, chronotropic, and lusitropic effects of triiodothyronine that might be associated with higher cardiovascular morbidity and mortality.¹² The effects of thyroid hormones on the heart in hyperthyroidism mimic a hyper-adrenergic state although there is no evidence that thyroid hormones affect the responsiveness of the heart to catecholamines (Figure 3). Some β -adrenergic elements in cardiomyocytes like the β 1-adrenergic receptors and the adenylyclase are regulated by the thyroid hormones.³¹

Subclinical thyroid dysfunction and surrogate cardiovascular markers

Carotid Intima Media Thickness (CIMT) is a surrogate cardiovascular endpoint^{39–41} associated with both SHyper and SHypo.¹² CIMT may be an independent predictor for cardiovascular events, although its usefulness for classifying risk is still unclear.⁴² A meta-analysis found that each 0.10 mm IMT increase corresponded to an increased RR for myocardial infarction of 1.15 (95% CI 1.12–1.17) and for stroke of 1.18 (95% CI 1.16–1.21).⁴³

In a case-control study, CIMT was significantly higher among the 36 patients with SHypo (0.66 mm \pm 0.10) than the 32 controls (0.57 mm \pm 0.08).³⁹ In a double-blind cross-over trial, 100 patients (mean age 53.8 years) with no prior thyroid dysfunction were



randomized to 100 μ g levothyroxine or placebo once a day for 12 weeks. After treatment, total lipoprotein decreased from 231.6 to 220 mg/dL; low-density lipoprotein cholesterol decreased from 142.9 to 131.3 mg/dL. Brachial artery flow-mediated dilatation, a marker of endothelial function, improved after treatment, probably because of increased FT4.²⁸ Changes in coagulation and fibrinolytic cascade are related to SHypo, and might explain increased risk of stroke in those under 65 years observed in SHypo.⁹

SHyper, on the other hand, might be accompanied by changes in the coagulation cascade that increase the risk of thrombosis, although it is unclear if this risk is clinically relevant.¹²

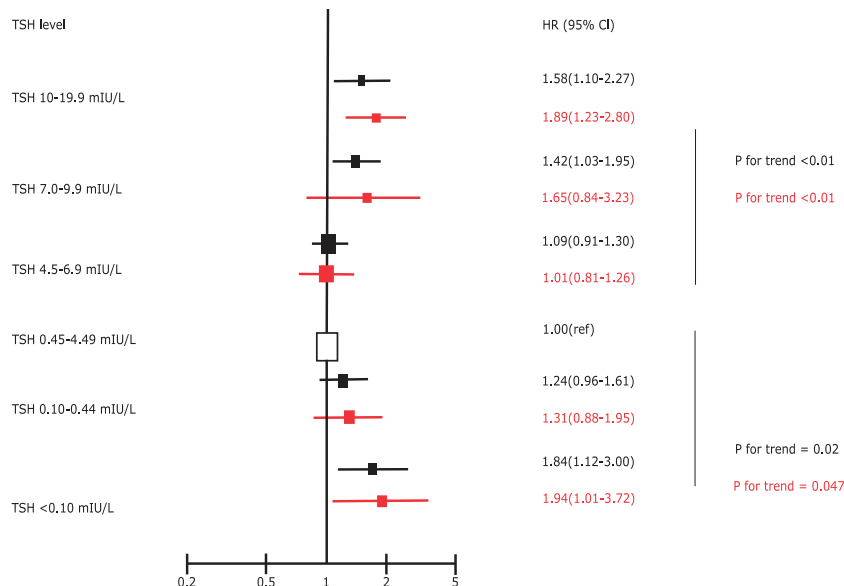


Figure 4 HRs for Coronary Heart Disease Mortality (black) and Heart Failure Event (red) based on TSH Levels (adapted from Refs. 4 and 8). Age- and sex-adjusted HRs and their 95% CIs, presented by squares (reproduced with permission from Ref. 49).

The international thyroid studies collaboration

To better assess cardiovascular disease risk in subclinical thyroid dysfunction, we setup the ‘Thyroid Studies Collaboration’, an international consortium that contributed individual participant data (IPD) from 18 prospective cohorts, including 73 000 participants across four continents.^{4,8–10,44} Few cases of central hyperthyroidism were excluded from the analyses. For each cardiovascular outcome associated with SHypo and SHyper, we updated our systematic review of the literature.^{4,8–10} IPD analyses allow analysis of specific subgroups with potentially different risk profiles, while study-level meta-analyses may lead to aggregation biases with spurious subgroup data.⁹ IPD analyses best pool evidence across studies; they allow (i) increase statistical power, (ii) adjust for similar confounding factors across studies, (iii) define similar TSH range, and (iv) standardize definitions of clinical outcomes.⁴⁵

Current evidence for association between subclinical thyroid dysfunction and cardiovascular diseases

The Thyroid Studies Collaboration examined the association between subclinical thyroid dysfunction and CHD events/mortality and HF, and clarified conflicting data from earlier prospective cohorts.^{46–48}

In a milestone IPD analysis of 11 prospective cohorts,⁴ 6.2% of the 55 287 participants had SHypo, but the vast majority ($n = 51\ 837$) were euthyroid. A total of 4470 participants developed CHD events, among whom 430 (9.6%) had SHypo. Hazard ratios (HRs) for CHD mortality were: 1.09 (95% CI, 0.91–1.30) with TSH 4.5 to 6.9 mIU/L; 1.42 (95% CI, 1.03–1.95) for TSH 7.0–9.9 mIU/L; and 1.58 (95% CI, 1.10–2.27; $P = 0.005$ for trend) for TSH > 10 mIU/L (Figure 4). SHypo did not increase total mortality.

A similar IPD analysis on the association of SHypo and HF in 25 390 participants (8.1% with SHypo) found that HF risk increased both with higher and lower TSH (P for quadratic pattern < 0.01) (Figure 4); 2069 participants had HF events, of whom 250 (12.1%) had SHypo and 57 (2.8%) SHyper.⁸

An IPD analysis with 52 674 participants from 10 cohorts (4.2% with SHyper) showed an association between SHyper and total mortality (HR 1.24, 95% CI, 1.06–1.46), CHD mortality (HR 1.29, 95% CI, 1.02–1.62), CHD events (HR 1.21, 95% CI, 0.99–1.46), and AF (HR 1.68, 95% CI, 1.16–2.43). 3,653 participants had CHD events, of whom 108 (2.9%) had SHyper. In subgroup analyses of CHD mortality and AF, TSH < 0.10 mIU/L was associated with higher HR (2.54, 95% CI, 1.08–5.99).¹⁰ Finally, an IPD analysis of 47,573 individuals from 17 cohorts (SHypo prevalence 0.4–16.3%, mean 7.3%) reported increased risk of fatal stroke in SHypo for those 18–49-years old (HR 4.22; 95% CI, 1.08–16.55) and 50–64-years old (HR 2.86; 95% CI, 1.31–6.26). A pattern of increased stroke risk for higher TSH levels was identified: In age- and sex-adjusted analyses the HR for fatal stroke was 1.18 (95% CI, 0.83–1.69) at TSH 4.5–6.9 mIU/L, 1.63 (95% CI, 1.09–2.43) at TSH 7.0–9.9 mIU/L, and 1.69 (95% CI, 0.88–3.27) at TSH 10.0–19.9 mIU/L.⁹

Impact of thyroid hormones replacement on cardiac function and cardiovascular imaging

Current data show several cardiac function parameters normalized in patients treated for SHypo.

Levothyroxine in SHypo decreased the ratio between pre-ejection period and LV ejection time decreased in 46 adults⁵⁰ and improved cardiac preload and contractility in 30 women.⁵¹ In 10 patients with SHypo, IRT and the A wave dropped after treatment, and E/A ratio increased (1.3 ± 0.3 to 1.7 ± 0.4 , $P < 0.001$)³⁶ (see Supplementary material online, Table S1A). Studies were limited by small sample size, short duration, non-standardized definitions of SHypo and echo measurements.

Impact of thyroid hormones replacement on CIMT

Some evidence (see Supplementary material online, Table S1B) shows CIMT regressed after thyroid function normalized. In a double-blind controlled trial, levothyroxine reduced CIMT from 0.76 ± 0.14 to 0.67 ± 0.13 mm ($P = 0.03$).⁴⁰ CIMT decreased from 0.67 ± 0.11 to 0.60 ± 0.10 mm ($P = 0.02$) in SHypo treated with levothyroxine for a year.³⁹ In a before–after trial including 34 patients with SHypo, CIMT decreased, after a year of levothyroxine replacement, from 0.64 ± 0.02 to 0.55 ± 0.02 mm ($P < 0.001$), total cholesterol from 5.99 ± 0.25 to 4.80 ± 0.20 mmol/L ($P < 0.001$); and low-density lipoprotein cholesterol (LDL-C) from 3.65 ± 0.23 to 2.75 ± 0.19 mmol/L ($P = 0.005$).⁴¹

Clinical issues for screening and treatment of subclinical thyroid dysfunction and the TRUST trial

Indications for screening and thresholds for treating SHypo and SHyper are uncertain because randomized clinical trials (RCTs) with relevant clinical outcomes are lacking^{52–54} and information on long-term risks is limited.⁵⁵ Current evidence is mostly based on observational studies, but also guidelines, expert committees and small randomized trials which have systematically been reviewed by the US Preventive Services Task Force (USPSTF) in 2015.^{56,57} Large randomized trials are needed to provide more evidence for screening and treatment of subclinical thyroid dysfunction.

The TRUST Trial, a blinded multicentre RCT funded by the EU-FP7 (Proposal 278148-2, *ClinicalTrials.gov*, NCT01660126), has been set up to investigate the multi-modal impact of treatment on quality of life and symptoms, and cardiovascular markers. Follow-up was continued until the end of 2016, shedding light on thresholds and benefits of levothyroxine in SHypo.

Recommendation for screening based on current evidence

Current guidelines^{58,59} advocate measuring TSH for specific conditions.^{4,8,49} Patients with previous thyroid disorder, hypothalamic-

pituitary disorder, and history of autoimmune disease could benefit from TSH monitoring because they are at increased risk of overt hypothyroidism.¹² TSH testing could benefit those with abnormal values or changes in lipid profile,⁶⁰ hyponatremia, unclear elevation of creatinine kinase, anaemia, and thyroid altering medication since all these laboratory findings are associated with higher risk of thyroid dysfunction, especially hypothyroidism.⁶¹ According to the USPSTF, there is currently insufficient evidence for weighing the benefits and harms of early screening.^{56,57} The American Academy of Family Physicians and the American College of Physicians (ACP) recommend thyroid function be checked regularly in older women (>50 years for ACP). The American Thyroid Association (ATA) and the American Association of Clinical Endocrinologists (AACE) advocate assessing thyroid function in any patient at risk for hypothyroidism, and measuring TSH in those >60.⁶²

Recommendation for treatment based on current evidence

Current recommended thresholds for starting thyroid hormone replacement are based on observational data and clinical trials with short follow-up. Their results suggest a TSH treatment threshold ≥ 10 mIU/L,⁶² also recommended by the ATA and AACE. The decision to treat TSH < 10 mIU/L should be taken individually, according to the risk profile of each patient.⁶² Patients with cardiovascular disorder or at high risk of developing overt hypothyroidism might benefit from earlier therapy,^{1,62} though opinions conflict.⁵⁷ Some have argued for the use of liothyronine (synthetic triiodothyronine), either alone or in combination with levothyroxine, for better control of thyroid function; however, the current evidence is too short-term and limited to recommend this form of treatment.⁶³ Especially in older people, overtreatment is common and can cause severe adverse events like arrhythmia and HF exacerbation.⁶⁴ According to the ATA and AACE, treatment if TSH < 0.1 mIU/L might be reasonable in high-risk patients, including those with cardiac arrhythmias, or postmenopausal women at risk of or with known osteoporosis. In other cases, careful clinical and 6-monthly laboratory follow-up seems appropriate.⁵²

Supplementary material

Supplementary material is available at *European Heart Journal* online.

Acknowledgements

We thank Kali Tal for her editorial assistance.

Funding

This work was supported by a grant from the Swiss National Science Foundation (SNSF 320030-150025 to Professor Nicolas Rodondi). Tinh-Hai Collet's research is supported by grants from the Swiss National Science Foundation (P3SMP3-155318, PZ00P3-167826).

Conflict of interest: none declared.

References

- Biondi B, Cooper DS. The clinical significance of subclinical thyroid dysfunction. *Endocr Rev* 2008;**29**:76–131.

2. Canaris GJ, Manowitz NR, Mayor G, Ridgway EC. The Colorado thyroid disease prevalence study. *Arch Intern Med* 2000;**160**:526–534.
3. Walsh JP, Bremner AP, Bulsara MK, O'leary P, Leedman PJ, Feddema P, Michelangeli V. Subclinical thyroid dysfunction as a risk factor for cardiovascular disease. *Arch Intern Med* 2005;**165**:2467–2472.
4. Rodondi N, den Elzen WP, Bauer DC, Cappola AR, Razvi S, Walsh JP, Asvold BO, Iervasi G, Imaizumi M, Collet TH, Bremner A, Maisonneuve P, Sgarbi JA, Khaw KT, Vanderpump MP, Newman AB, Cornuz J, Franklyn JA, Westendorp RG, Vittinghoff E, Gussekloo J, Thyroid Studies C. Subclinical hypothyroidism and the risk of coronary heart disease and mortality. *JAMA* 2010;**304**:1365–1374.
5. Razvi S, Weaver JU, Vanderpump MP, Pearce SH. The incidence of ischemic heart disease and mortality in people with subclinical hypothyroidism: reanalysis of the Whichham Survey cohort. *J Clin Endocrinol Metab* 2010;**95**:1734–1740.
6. Imaizumi M, Akahoshi M, Ichimaru S, Nakashima E, Hida A, Soda M, Usa T, Ashizawa K, Yokoyama N, Maeda R, Nagataki S, Eguchi K. Risk for ischemic heart disease and all-cause mortality in subclinical hypothyroidism. *J Clin Endocrinol Metab* 2004;**89**:3365–3370.
7. Hak AE, Pols HA, Visser TJ, Drexhage HA, Hofman A, Witteman JC. Subclinical hypothyroidism is an independent risk factor for atherosclerosis and myocardial infarction in elderly women: the Rotterdam Study. *Ann Intern Med* 2000;**132**:270–278.
8. Gencer B, Collet TH, Virgini V, Bauer DC, Gussekloo J, Cappola AR, Nanchen D, den Elzen WP, Balmer P, Luben RN, Iacoviello M, Triggiani V, Cornuz J, Newman AB, Khaw KT, Jukema JW, Westendorp RG, Vittinghoff E, Aujesky D, Rodondi N, Thyroid Studies C. Subclinical thyroid dysfunction and the risk of heart failure events: an individual participant data analysis from 6 prospective cohorts. *Circulation* 2012;**126**:1040–1049.
9. Chaker L, Baumgartner C, den Elzen WP, Ikram MA, Blum MR, Collet TH, Bakker SJ, Dehghan A, Drechsler C, Luben RN, Hofman A, Portegies ML, Medici M, Iervasi G, Stott DJ, Ford I, Bremner A, Wannner C, Ferrucci L, Newman AB, Dullaart RP, Sgarbi JA, Ceresini G, Maciel RM, Westendorp RG, Jukema JW, Imaizumi M, Franklyn JA, Bauer DC, Walsh JP, Razvi S, Khaw KT, Cappola AR, Volzke H, Franco OH, Gussekloo J, Rodondi N, Peeters RP, Thyroid Studies C. Subclinical Hypothyroidism and the Risk of Stroke Events and Fatal Stroke: An Individual Participant Data Analysis. *J Clin Endocrinol Metab* 2015;**100**:2181–2191.
10. Collet TH, Gussekloo J, Bauer DC, den Elzen WP, Cappola AR, Balmer P, Iervasi G, Asvold BO, Sgarbi JA, Volzke H, Gencer B, Maciel RM, Molinaro S, Bremner A, Luben RN, Maisonneuve P, Cornuz J, Newman AB, Khaw KT, Westendorp RG, Franklyn JA, Vittinghoff E, Walsh JP, Rodondi N, Thyroid Studies C. Subclinical hyperthyroidism and the risk of coronary heart disease and mortality. *Arch Intern Med* 2012;**172**:799–809.
11. Hollowell JG, Staehling NW, Flanders WD, Hannon WH, Gunter EW, Spencer CA, Braverman LE. Serum TSH, T(4), and thyroid antibodies in the United States population (1988 to 1994): National Health and Nutrition Examination Survey (NHANES III). *J Clin Endocrinol Metab* 2002;**87**:489–499.
12. Cooper DS, Biondi B. Subclinical thyroid disease. *Lancet* 2012;**379**:1142–1154.
13. Cappola AR. Levothyroxine prescription: not as simple as it seems. *JAMA* 2014;**311**:2532–2533.
14. Goichot B, Sapin R, Schlienger JL. Subclinical hyperthyroidism: considerations in defining the lower limit of the thyrotropin reference interval. *Clin Chem* 2009;**55**:420–424.
15. Fatourech V. Upper limit of normal serum thyroid-stimulating hormone: a moving and now an aging target?. *J Clin Endocrinol Metab* 2007;**92**:4560–4562.
16. Surks MI, Goswami G, Daniels GH. The thyrotropin reference range should remain unchanged. *J Clin Endocrinol Metab* 2005;**90**:5489–5496.
17. Wartofsky L, Dickey RA. The evidence for a narrower thyrotropin reference range is compelling. *J Clin Endocrinol Metab* 2005;**90**:5483–5488.
18. Volzke H, Alte D, Kohlmann T, Ludemann J, Nauck M, John U, Meng W. Reference intervals of serum thyroid function tests in a previously iodine-deficient area. *Thyroid* 2005;**15**:279–285.
19. Vadiveloo T, Donnan PT, Murphy MJ, Leese GP. Age- and gender-specific TSH reference intervals in people with no obvious thyroid disease in Tayside, Scotland: the Thyroid Epidemiology, Audit, and Research Study (TEARS). *J Clin Endocrinol Metab* 2013;**98**:1147–1153.
20. Waring AC, Arnold AM, Newman AB, Buzkova P, Hirsch C, Cappola AR. Longitudinal changes in thyroid function in the oldest old and survival: the cardiovascular health study all-stars study. *J Clin Endocrinol Metab* 2012;**97**:3944–3950.
21. Surks MI, Boucai L. Age- and race-based serum thyrotropin reference limits. *J Clin Endocrinol Metab* 2010;**95**:496–502.
22. Vanderpump MP, Tunbridge WM, French JM, Appleton D, Bates D, Clark F, Grimley Evans J, Hasan DM, Rodgers H, Tunbridge F, Young ET. The incidence of thyroid disorders in the community: a twenty-year follow-up of the Whichham Survey. *Clin Endocrinol (Oxf)* 1995;**43**:55–68.
23. Andersen S, Pedersen KM, Bruun NH, Laurberg P. Narrow individual variations in serum T(4) and T(3) in normal subjects: a clue to the understanding of subclinical thyroid disease. *J Clin Endocrinol Metab* 2002;**87**:1068–1072.
24. Atzmon G, Barzilai N, Surks MI, Gabriely I. Genetic predisposition to elevated serum thyrotropin is associated with exceptional longevity. *J Clin Endocrinol Metab* 2009;**94**:4768–4775.
25. Hansen PS, Brix TH, Sorensen TI, Kyvik KO, Hegedus L. Major genetic influence on the regulation of the pituitary-thyroid axis: a study of healthy Danish twins. *J Clin Endocrinol Metab* 2004;**89**:1181–1187.
26. Clark PM, Holder RL, Haque SM, Hobbs FD, Roberts LM, Franklyn JA. The relationship between serum TSH and free T4 in older people. *J Clin Pathol* 2012;**65**:463–465.
27. Hadlow NC, Rothacker KM, Wardrop R, Brown SJ, Lim EM, Walsh JP. The relationship between TSH and free T(4) in a large population is complex and nonlinear and differs by age and sex. *J Clin Endocrinol Metab* 2013;**98**:2936–2943.
28. Razvi S, Ingoe L, Keeka G, Oates C, McMillan C, Weaver JU. The beneficial effect of L-thyroxine on cardiovascular risk factors, endothelial function, and quality of life in subclinical hypothyroidism: randomized, crossover trial. *J Clin Endocrinol Metab* 2007;**92**:1715–1723.
29. Reuters VS, Teixeira Pde F, Vigarito PS, Almeida CP, Buescu A, Ferreira MM, de Castro CL, Gold J, Vaisman M. Functional capacity and muscular abnormalities in subclinical hypothyroidism. *Am J Med Sci* 2009;**338**:259–263.
30. Polikar R, Burger AG, Scherrer U, Nicod P. The thyroid and the heart. *Circulation* 1993;**87**:1435–1441.
31. Klein I, Danzi S. Thyroid disease and the heart. *Circulation* 2007;**116**:1725–1735.
32. Klein I, Ojamaa K. Thyroid hormone and the cardiovascular system. *N Engl J Med* 2001;**344**:501–509.
33. Biondi B. Mechanisms in endocrinology: heart failure and thyroid dysfunction. *Eur J Endocrinol* 2012;**167**:609–618.
34. Biondi B, Palmieri EA, Lombardi G, Fazio S. Subclinical hypothyroidism and cardiac function. *Thyroid* 2002;**12**:505–510.
35. Galderisi M, Henein MY, D'hooge J, Sicari R, Badano LP, Zamorano JL, Roelandt JR. European Association of E. Recommendations of the European Association of Echocardiography: how to use echo-Doppler in clinical trials: different modalities for different purposes. *Eur J Echocardiogr* 2011;**12**:339–353.
36. Biondi B, Fazio S, Palmieri EA, Carella C, Panza N, Cittadini A, Bone F, Lombardi G, Sacca L. Left ventricular diastolic dysfunction in patients with subclinical hypothyroidism. *J Clin Endocrinol Metab* 1999;**84**:2064–2067.
37. Rodondi N, Bauer DC, Cappola AR, Cornuz J, Robbins J, Fried LP, Ladenson PW, Vittinghoff E, Gottdiener JS, Newman AB. Subclinical thyroid dysfunction, cardiac function, and the risk of heart failure. The Cardiovascular Health study. *J Am Coll Cardiol* 2008;**52**:1152–1159.
38. Tribulova N, Knezl V, Shainberg A, Seki S, Soukup T. Thyroid hormones and cardiac arrhythmias. *Vascu Pharmacol* 2010;**52**:102–112.
39. Kim SK, Kim SH, Park KS, Park SW, Cho YW. Regression of the increased common carotid artery-intima media thickness in subclinical hypothyroidism after thyroid hormone replacement. *Endocr J* 2009;**56**:753–758.
40. Monzani F, Caraccio N, Kozakowa M, Dardano A, Vittone F, Virdis A, Taddei S, Palombo C, Ferrannini E. Effect of levothyroxine replacement on lipid profile and intima-media thickness in subclinical hypothyroidism: a double-blind, placebo-controlled study. *J Clin Endocrinol Metab* 2004;**89**:2099–2106.
41. Nagasaki T, Inaba M, Henmi Y, Kumeda Y, Ueda M, Tahara H, Sugiguchi S, Fujiwara S, Emoto M, Ishimura E, Onoda N, Ishikawa T, Nishizawa Y. Decrease in carotid intima-media thickness in hypothyroid patients after normalization of thyroid function. *Clin Endocrinol (Oxf)* 2003;**59**:607–612.
42. Lorenz MW, Schaefer C, Steinmetz H, Sitzer M. Is carotid intima media thickness useful for individual prediction of cardiovascular risk? Ten-year results from the Carotid Atherosclerosis Progression Study (CAPS). *Eur Heart J* 2010;**31**:2041–2048.
43. Lorenz MW, Markus HS, Bots ML, Rosvall M, Sitzer M. Prediction of clinical cardiovascular events with carotid intima-media thickness: a systematic review and meta-analysis. *Circulation* 2007;**115**:459–467.
44. Blum MR, Bauer DC, Collet TH, Fink HA, Cappola AR, da Costa BR, Wirth CD, Peeters RP, Asvold BO, den Elzen WP, Luben RN, Imaizumi M, Bremner AP, Gogakos A, Eastell R, Kearney PM, Strotmeyer ES, Wallace ER, Hoff M, Ceresini G, Rivadeneira F, Uitterlinden AG, Stott DJ, Westendorp RG, Khaw KT, Langhammer A, Ferrucci L, Gussekloo J, Williams GR, Walsh JP, Juni P, Aujesky D, Rodondi N, Thyroid Studies C. Subclinical thyroid dysfunction and fracture risk: a meta-analysis. *JAMA* 2015;**313**:2055–2065.
45. Simmonds MC, Higgins JP, Stewart LA, Tierney JF, Clarke MJ, Thompson SG. Meta-analysis of individual patient data from randomized trials: a review of methods used in practice. *Clin Trials* 2005;**2**:209–217.
46. Cappola AR, Fried LP, Arnold AM, Danese MD, Kuller LH, Burke GL, Tracy RP, Ladenson PW. Thyroid status, cardiovascular risk, and mortality in older adults. *JAMA* 2006;**295**:1033–1041.
47. Iervasi G, Molinaro S, Landi P, Taddei MC, Galli E, Mariani F, L'abbate A, Pingitore A. Association between increased mortality and mild thyroid dysfunction in cardiac patients. *Arch Intern Med* 2007;**167**:1526–1532.

48. Rodondi N, Newman AB, Vittinghoff E, de Rekeneire N, Satterfield S, Harris TB, Bauer DC. Subclinical hypothyroidism and the risk of heart failure, other cardiovascular events, and death. *Arch Intern Med* 2005;**165**:2460–2466.
49. Gencer B, Rodondi N. Should we screen for hypothyroidism in patients with cardiovascular disease? *Eur Heart J* 2016.
50. Monzani F, Di Bello V, Caraccio N, Bertini A, Giorgi D, Giusti C, Ferrannini E. Effect of levothyroxine on cardiac function and structure in subclinical hypothyroidism: a double blind, placebo-controlled study. *J Clin Endocrinol Metab* 2001;**86**:1110–1115.
51. Ripoli A, Pingitore A, Favilli B, Bottoni A, Turchi S, Osman NF, De Marchi D, Lombardi M, L'abbate A, Iervasi G. Does subclinical hypothyroidism affect cardiac pump performance? Evidence from a magnetic resonance imaging study. *J Am Coll Cardiol* 2005;**45**:439–445.
52. Surks MI, Ortiz E, Daniels GH, Sawin CT, Col NF, Cobin RH, Franklyn JA, Hershman JM, Burman KD, Denke MA, Gorman C, Cooper RS, Weissman NJ. Subclinical thyroid disease: scientific review and guidelines for diagnosis and management. *JAMA* 2004;**291**:228–238.
53. Villar H, Saconato H, Valente O, Atallah A. Thyroid hormone replacement for subclinical hypothyroidism. *Cochrane Database Syst Rev* (Online). 2007;CD003419.
54. Gharib H, Tuttle RM, Baskin HJ, Fish LH, Singer PA, McDermott MT. Subclinical thyroid dysfunction: a joint statement on management from the American Association of Clinical Endocrinologists, the American Thyroid Association, and the Endocrine Society. *J Clin Endocrinol Metab* 2005;**90**:581–585. discussion 6–7.
55. Helfand M. Screening for subclinical thyroid dysfunction in nonpregnant adults: a summary of the evidence for the U.S. Preventive Services Task Force. *Ann Intern Med* 2004;**140**:128–141.
56. LeFevre ML. Force USPST. Screening for thyroid dysfunction: U.S. Preventive Services Task Force recommendation statement. *Ann Intern Med* 2015;**162**:641–650.
57. Ruge JB, Bougatso C, Chou R. Screening and treatment of thyroid dysfunction: an evidence review for the U.S. Preventive Services Task Force. *Ann Intern Med* 2015;**162**:35–45.
58. Pearce SH, Brabant G, Duntas LH, Monzani F, Peeters RP, Razvi S, Wemeau JL. 2013 ETA Guideline: Management of Subclinical Hypothyroidism. *Eur Thyroid J* 2013;**2**:215–228.
59. Ponikowski P, Voors AA, Anker SD, Bueno H, Cleland JG, Coats AJ, Falk V, Gonzalez-Juanatey JR, Harjola VP, Jankowska EA, Jessup M, Linde C, Nihoyannopoulos P, Parissis JT, Pieske B, Riley JP, Rosano GM, Ruilope LM, Ruschitzka F, Rutten FH, van der Meer P. Authors/Task Force M, Document R. 2016 ESC Guidelines for the diagnosis and treatment of acute and chronic heart failure: The Task Force for the diagnosis and treatment of acute and chronic heart failure of the European Society of Cardiology (ESC) Developed with the special contribution of the Heart Failure Association (HFA) of the ESC. *Eur Heart J* 2016;**37**:2129–2200.
60. Piepoli MF, Hoes AW, Agewall S, Albus C, Brotons C, Catapano AL, Cooney MT, Corra U, Cosyns B, Deaton C, Graham I, Hall MS, Hobbs FD, Locher ML, Lollgen H, Marques-Vidal P, Perk J, Prescott E, Redon J, Richter DJ, Sattar N, Smulders Y, Tiberi M, van der Worp HB, van Dis I, Verschuren WM. Authors/Task Force M. 2016 European Guidelines on cardiovascular disease prevention in clinical practice: The Sixth Joint Task Force of the European Society of Cardiology and Other Societies on Cardiovascular Disease Prevention in Clinical Practice (constituted by representatives of 10 societies and by invited experts): Developed with the special contribution of the European Association for Cardiovascular Prevention & Rehabilitation (EACPR). *Eur Heart J* 2016;**37**:2315–2381.
61. Roberts CG, Ladenson PW. Hypothyroidism. *Lancet* 2004;**363**:793–803.
62. Garber JR, Cobin RH, Gharib H, Hennessey JV, Klein I, Mechanick JL, Pessah-Pollack R, Singer PA, Woeber KA. American Association Of Clinical E, American Thyroid Association Taskforce On Hypothyroidism In A. Clinical practice guidelines for hypothyroidism in adults: cosponsored by the American Association of Clinical Endocrinologists and the American Thyroid Association. *Thyroid* 2012;**22**:1200–1235.
63. Okosieme O, Gilbert J, Abraham P, Boelaert K, Dayan C, Gurnell M, Leese G, McCabe C, Perros P, Smith V, Williams G, Vanderpump M. Management of primary hypothyroidism: statement by the British Thyroid Association Executive Committee. *Clin Endocrinol (Oxf)* 2016;**84**:799–808.
64. Somwaru LL, Arnold AM, Joshi N, Fried LP, Cappola AR. High frequency of and factors associated with thyroid hormone over-replacement and under-replacement in men and women aged 65 and over. *J Clin Endocrinol Metab* 2009;**94**:1342–1345.